

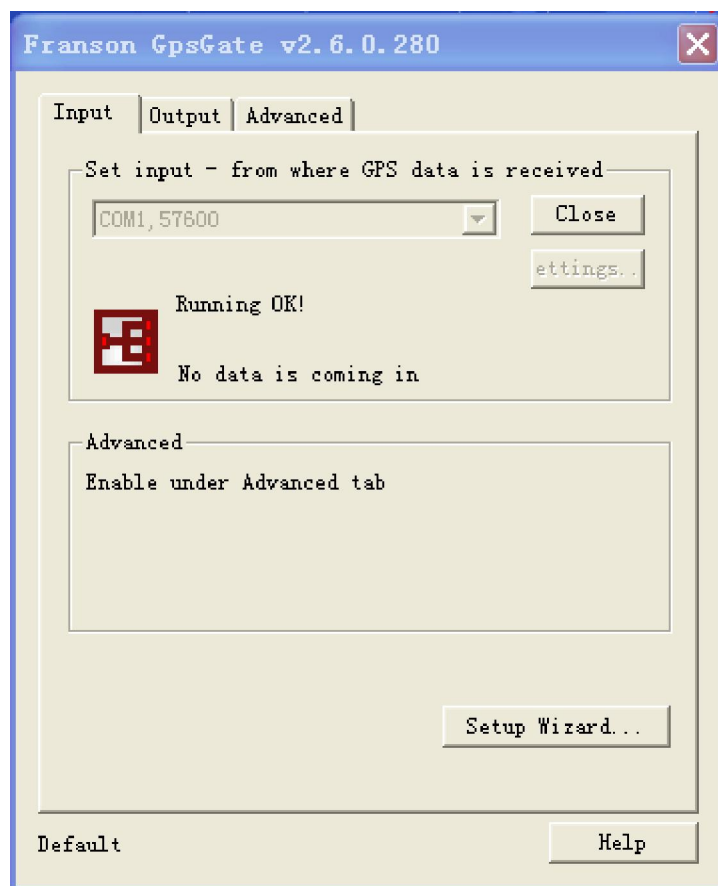
Garmin Map User Guide

—. Garmin Navigation Software Installation and Settings

1. Installations of Garmin5.0.60.0, GpsGate ;

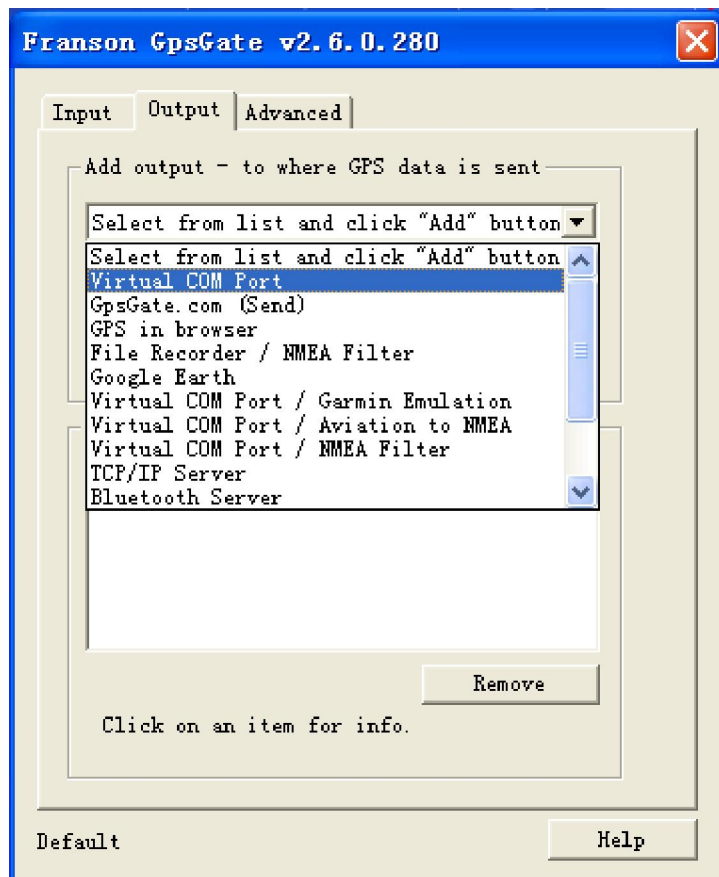
Garmin Navigation Software can only identify GPS receivers or GPS chips supported by Garmin. So It needs GpsGate tools to solve this problem by virtual GPS port.

- a. Complete the installation of GpsGate, and then do the settings as followings:



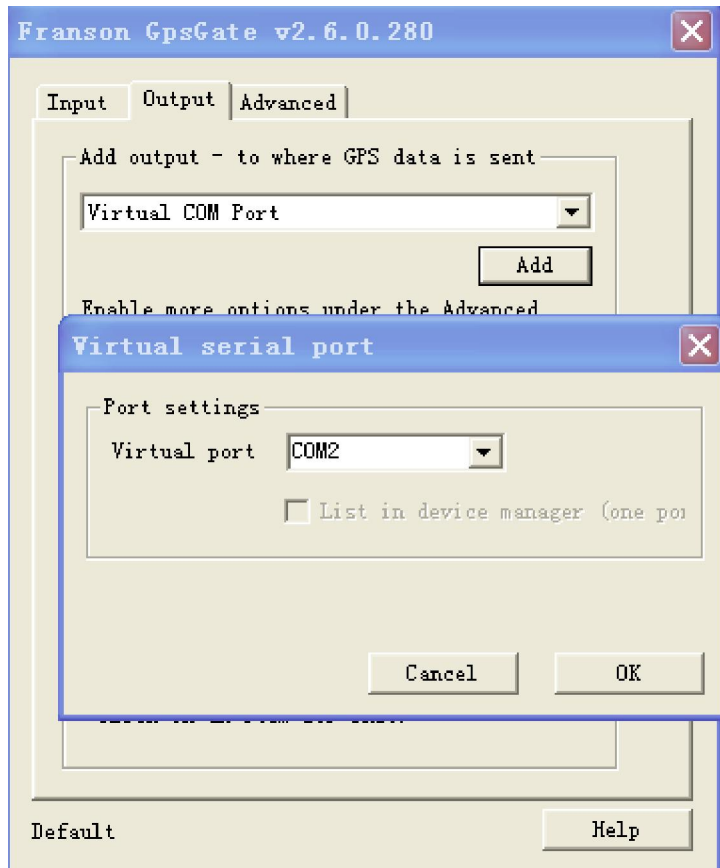
(Figure 1.1)

In the Input options, set the port and speed its GPS chips or GPS receiver used, to be open status and there are words of 'Running OK'. Switching to Output settings, you should select Virtual COM port.



(Figure 1.2)

Add Virtual port. It is ok to choose any COM port which is not occupied. Please see the figure 1.3:

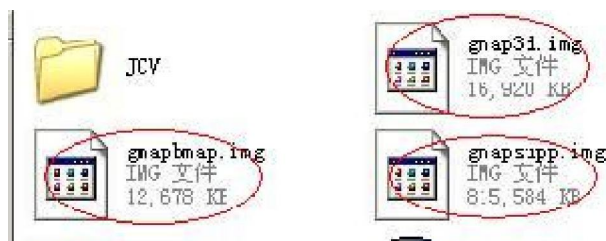


(Figure 1.3)

Before running Garmin Navigation software, please assure that GpsGate is running, and add GpsGate shortcuts to Program-> Start, let GpsGate start automatically each time.

Input License key to activate GpsGate ;

b. Installation of Maps



Please copy the downloaded map file to root directory of Garmin Mobile PC folder. Please select to cover and replace it if map file is the same.

gnapsupp.img is the master map file , gnapbmap.img is basic world map file.

c. Unlock Map

After finished copying maps, execute cQue.exe in GarminMobilePC folder, and switch to the settings->About, record Software Unit ID: ex : 2892513683 and then exit Garmin.

Open Garmin.Mobile.XT.Keygen.v1.5.exe under tools ->key:



Please copy Software Unit ID you've recorded to input box of Garmin.Mobile.XT.Keygen.v1.5, choose Garmin Mobile PC as software product, click Generate, and replace old unlock code in sw.unl with the new generated software unlock one.

Please choose 'custom mapset' in 'select Map Product' option , input map ID in the pop-up Map ID window, such as China Map ID: 431. After choosing right Map ID, click Generate key again, and replace old unlock code in gmapsupp.unl with the new generated software unlock one.

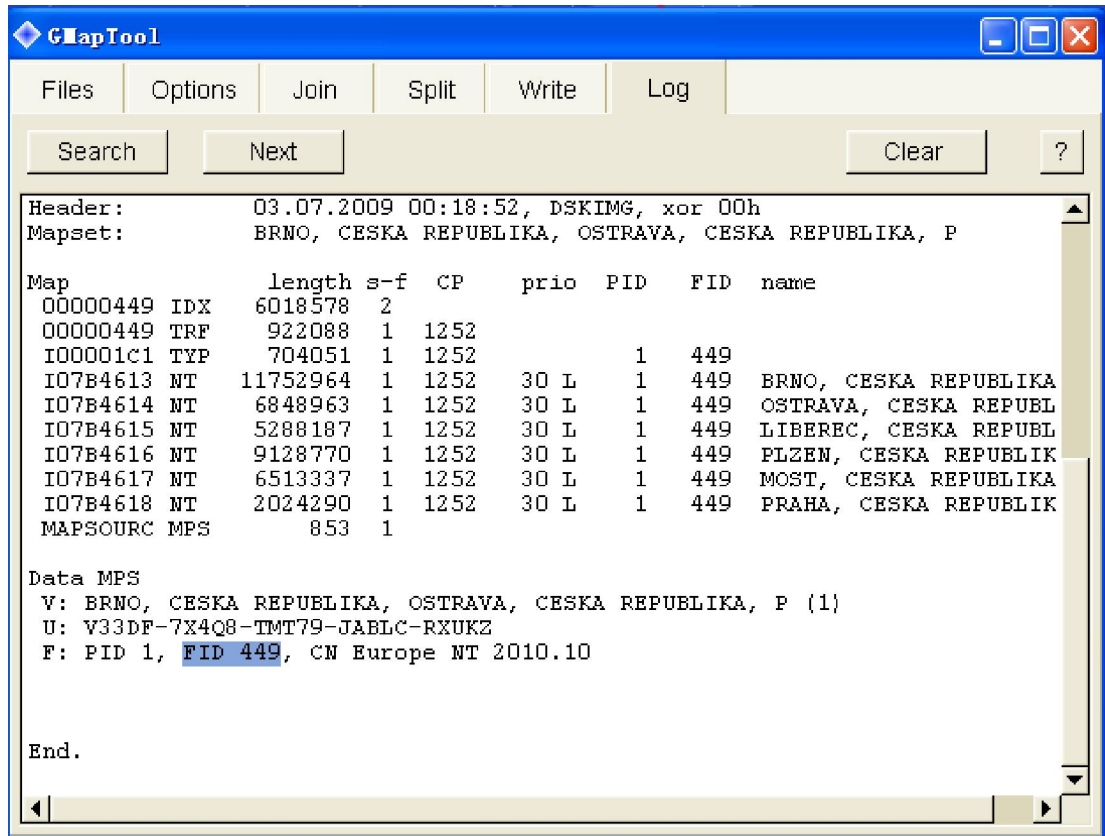
Please open sw.unl , gmapsupp.unl file by Notepad, copy the resulting software unlock code to sw.unl file, and the generated map unlock code to gmapsupp.unl file.

Save and close the sw.unl, gmapsupp.unl file, then quite Garmin.Mobile.XT.Keygen. tool;

Execute GarminMobilePC\cQue.exe, enter Garmin main program and start GPA navigation.

2. Treatment & Precautions for Garmin Navigation common questions :

- a. Please make sure gpsgate is running before executing Garmin Navigation each time, set the GPS port open in input option as shown 'Running OK!' and the correct rate of GPS.
- b. When you change your map, the unlock code in sw.unl and gmapsupp.unl should be changed correspondingly. You can regenerated new key through GarminMobilePC\tools\key to update sw.unl and gmapsupp.unl file.
- c. Each .img map has its corresponding map ID. You need to know the map ID you are using to generate correct gmapsupp.unl file to unlock maps.
- d. Looking at your Map ID, You can use tool 'GarminMobilePC\tools\GMapTool v0.40\ GMapTool.exe' to download .img Maps, and click infor to see FID (Map ID) as followings.



- e. The .img maps Garmin used, which be shared by PC version maps and GPS navigation used maps, also can support other GPS devices through GarminMobilePC main program and unlock ways.
- f. What if the map can not be properly displayed when you covered and replaces old .img map with the downloaded map file like gmapsupp.img and gmapbmap.img?
 - ➔ It might be caused by the downloaded gmapbmap.img file basic world map. So It is suggested to use original gmapbmap.img basic map file in GarminMobilePC files.