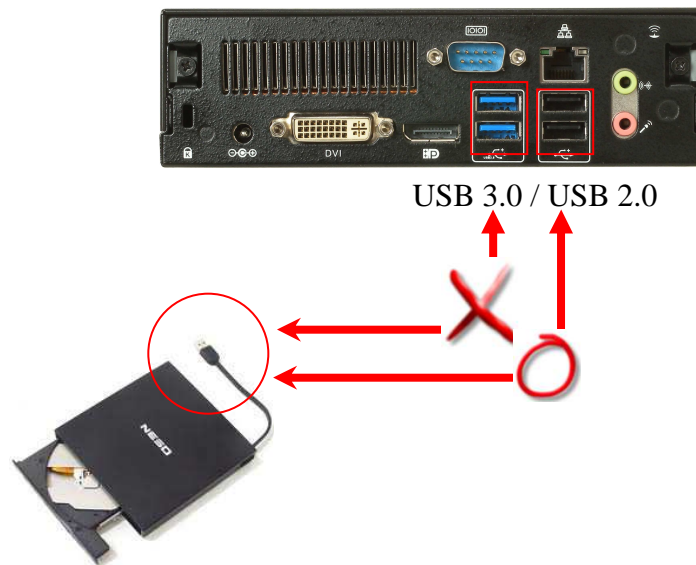


AOpen DE35-HD Notice

親愛的顧客您好，謝謝您選用 AOpen Digital Engine，請您在使用 DE35-HD 前注意下列事項。

1、特別在此提醒您，在使用外接式光碟機安裝作業系統時，請使用 USB 2.0 接口。DE35-HD USB 3.0 接口不支援使用外接式光碟機安裝作業系統。



2、DE35-HD COM port 不支援電話鈴聲喚醒 WOR (Walk On Ring)功能。

3、DE35-HD 在搭配 Microsoft Windows XP 32 位元作業系統下及不同的記憶體模組，會有不同的記憶體容量顯示，此為正常現象，對應表如下；

記憶體模組	Microsoft Windows XP32 位元下 顯示
1G	764 MB
2G	1.62 G
4G	2.37 G

4、DE35-HD 需使用顯像轉接頭才能搭配 HDMI 顯示器。在操作時，HDMI 顯示器不會自動顯示滿框，此為正常現象。請至 AMD VISION Engine Control Center 中，依實際搭配之顯示器調整解析度。操作步驟如下所示；

註：

1. DE35-HD 可搭配下列轉接頭以支援 HDMI 顯示器

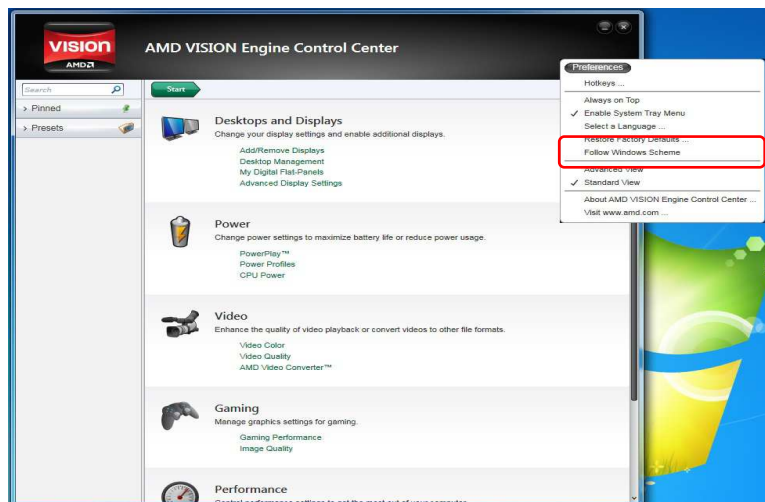
1.1 DVI 轉接 HDMI

1.2 Displayport 轉接 HDMI（須額外購買）

1、進入”AMD VISION Engine Control Center”應用程式後，

1.1 請先點選「喜好設定」

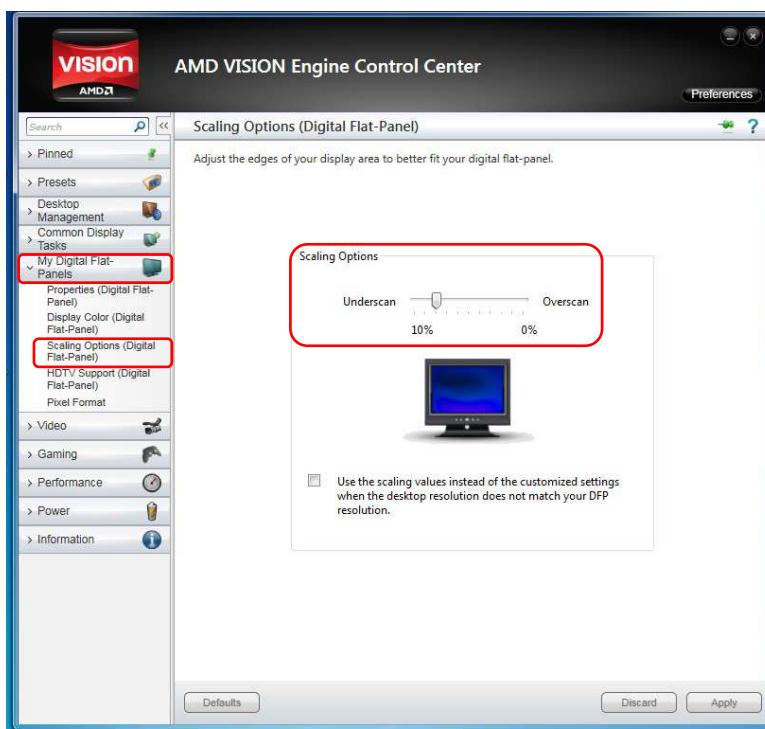
1.2 將「標準檢視」調整為「進階檢視」



2、請展開「我的數位平面面板」。

2.1 點選「縮放選項（數位平面面板）」。

2.2 調整「縮放選項」，將設定值調整到適合您的顯示器。



AOpen DE35-HD Notice

Dear customer, thanks for choosing AOpen DE35-HD. Before you use DE35-HD, please kindly read the following notice.

1. DE35-HD USB 3.0 port doesn't support external ODD during installation OS. You could use DE35-HD USB 2.0 port to connect your ODD.
2. DE35-HD COM port does not support WOR (Walk On Ring)
3. DE35-HD collocated with Microsoft Windows XP 32 bit OS and diverse memory module has different display of memory capacity. It is a normal phenomenon, corresponding table as below ;

Memory Module	Display under Microsoft Windows XP32 bit OS
1G	764 MB
2G	1.62 G
4G	2.37 G

P.S.:

ODD: Optical Driver Device

OS: Operation System

4、DE35-HD can collocate with HDMI display only with display adaptor。First of all, it is a normal phenomenon that HDMI display can not fully fit the screen automatically。Please enter "AMD VISION Engine Control Center", adjust screen size according to real display。The operation procedure is shown below ;

P.S. :

1. DE35-HD can collocate with adaptors shown below in order to support HDMI display

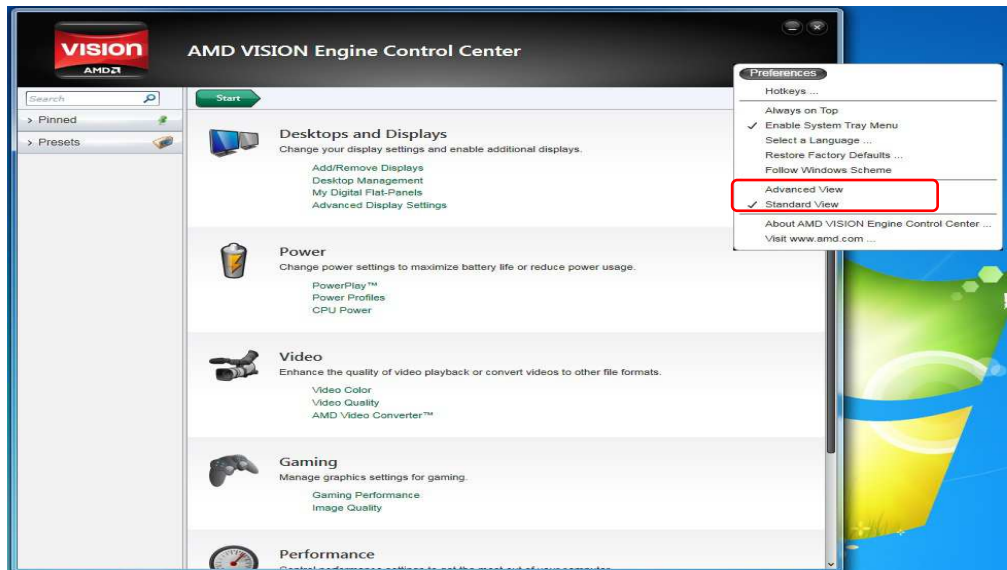
1.1 DVI to HDMI Display Adaptor

1.2 Display port to HDMI Display Adaptor (Optional)

1、Start" AMD VISION Engine Control Center" software ,

1.1 Click 「 Preference 」

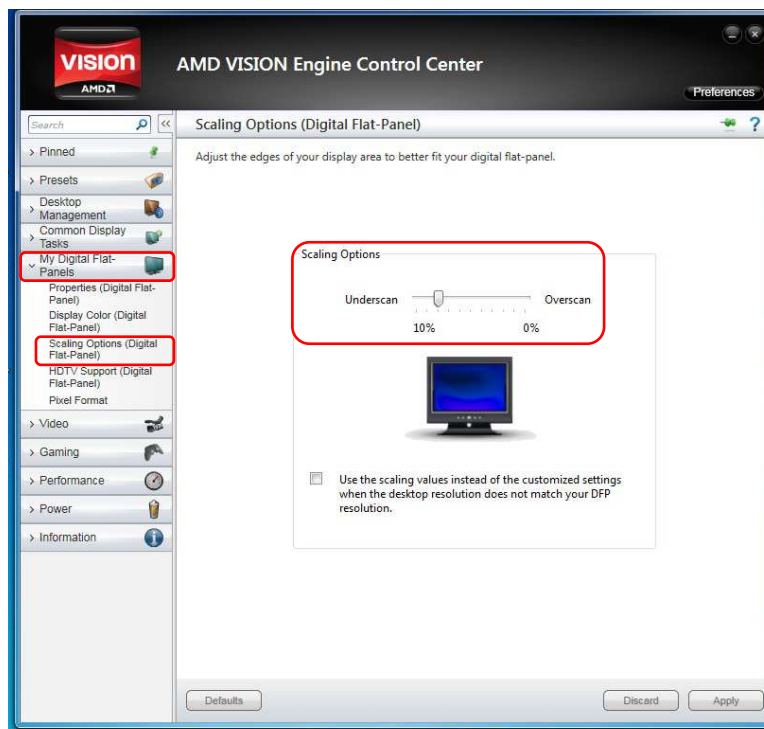
1.2 Change 「 Standard View 」 to 「 Advanced View 」



2、Click 「My Digital Flat-Panels」。

2.1 Click 「Scaling Option (Digital Flat-Panel) 」。

2.2 Find the 「Scaling Options」 to setting bar until to fit size。



Copyright

Copyright of this publication belongs to AOpen Inc. AOpen reserves the right to change the content of this publication without obligation to notify any party of such changes or revisions. No part of this publication may be reproduced, transcribed, transmitted, translated into any language, stored in a retrieval system in any form or by any means electronically, mechanically, optically without the prior

written permission of this company.

Disclaimer

AOpen makes no warranties or representations, either expressed or implied, with respect to the content herein and specifically disclaims any warranties, merchantability of fitness for any particular purpose.

AOpen and AOpen logos used herein are registered trademarks of AOpen Inc.

All other brand names and trademarks are owned by their respective owners.

Copyright © 2011 by AOpen Inc.

All rights reserved.