

Assembly Guide for DE35-HD

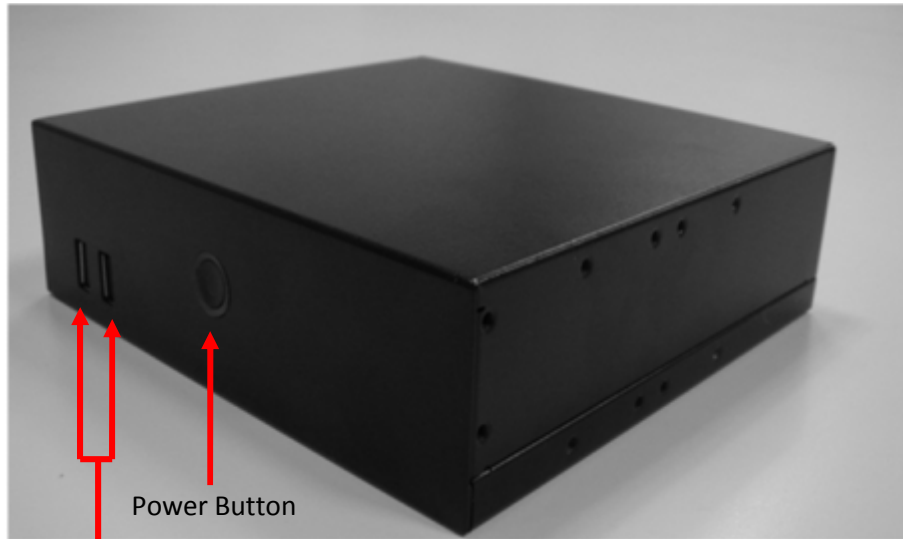


V1.0

2011/03/23

1. Outlook

Front IO



Power Button

Front USB

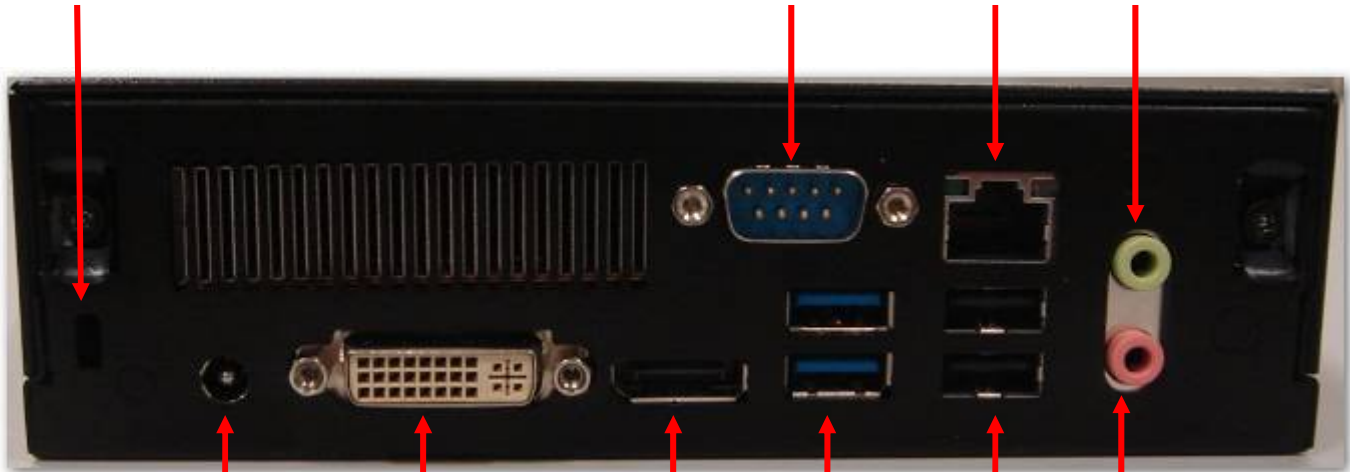
Rear IO

Kensington
Lock hold

Com Port

LNA

Line out



DC 20v/12v

DVI

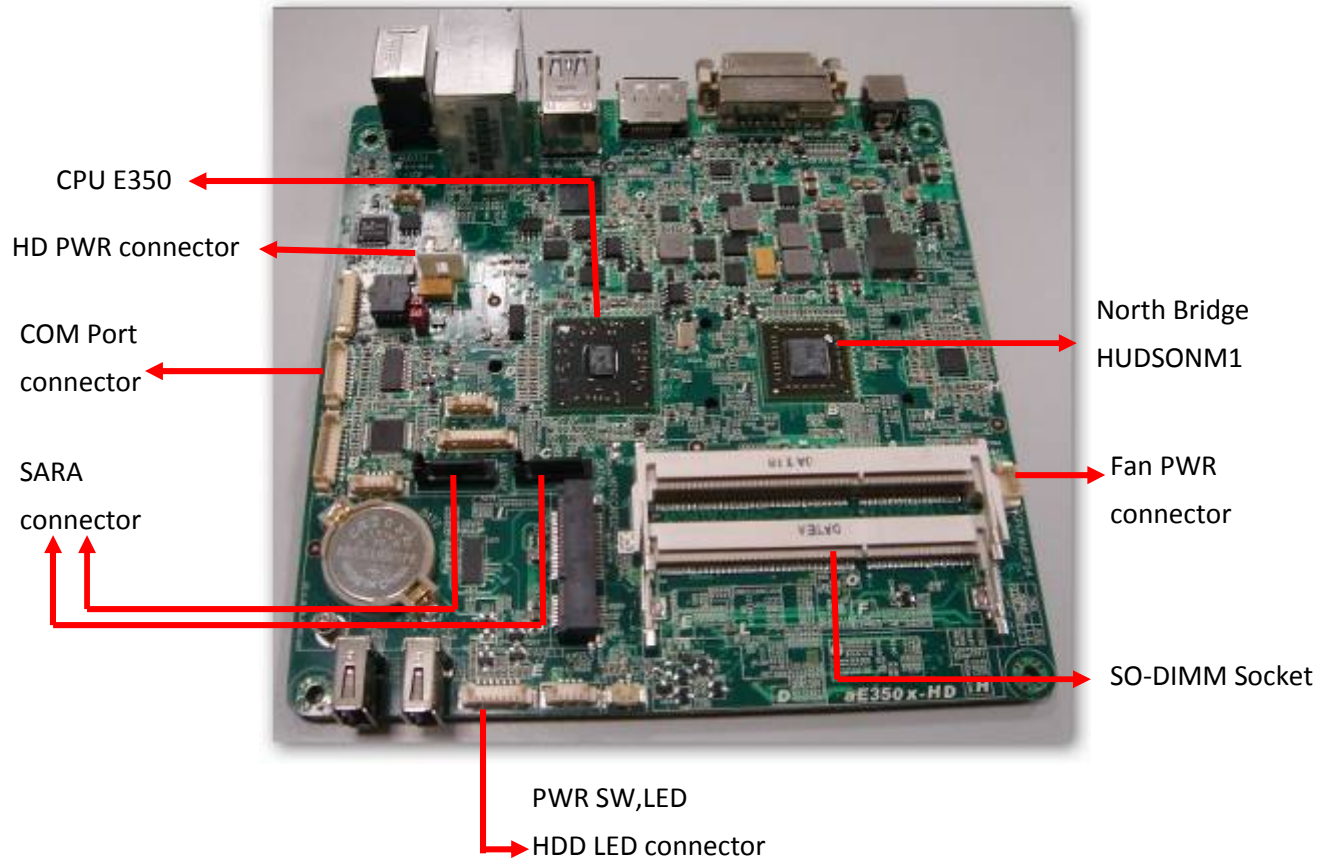
HDMI

USB 3.0

USB 2.0

Mic in

Internal Connectors



1. Assembly Guide

1. Open Housing

1-1.

Detach 2 pcs of the rear side screw (FPH M3 screw) by the electric screw driver . (Screwdriver torque : 5.0 ± 0.2 kgf. cm).



1-2.

Push the Upper case to remove it .

Front Side



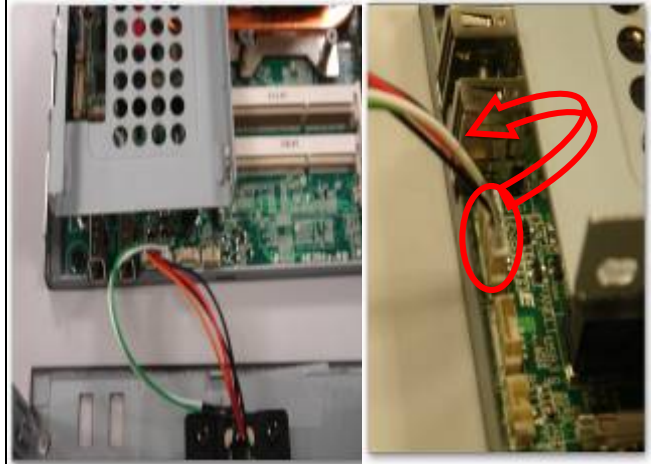
Rear Side



1-3. Open the top cover



1-4. Connect the wire unplug



1-5. You will see the kernel of Digital Engine



2. Install Key components

2-1 Install Memory

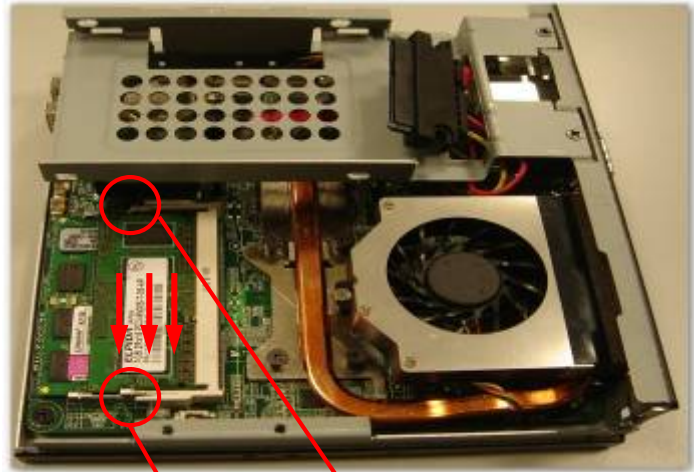
2-1-1.

Insert the memory on the socket as this angle.



2-1-2.

Then press the DIMM as flat on the Motherboard, and you will hear the click voice.



Make sure it clicks

2-2 Install HDD on Supporter

2-2-1 Put the HDD on support

Please pay attention to the direction of SATA
HDD



2-2-2 and screw HDD with 4pcs of FPH M3 screw (on both flanks)

(Screwdriver torque : 2.5 ± 0.1 kgf. cm)



2-2-2-1

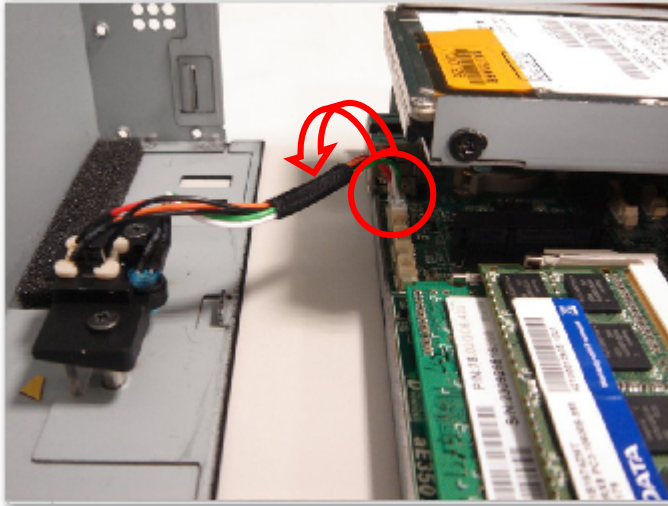


2-2-2-1

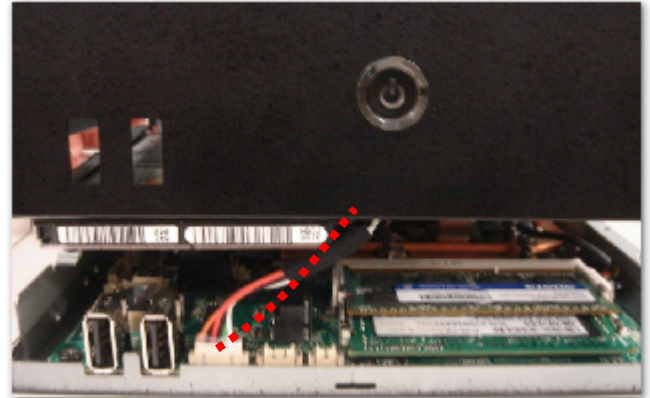


2-3 Top Cover and cable management assembly

2-3 Connect the wire plug



2-3-1 Arrange the wire to avoid damaging the wire. According the photo.



2-3-2. Screw the upper case



2-3-4 Assemble Top case accord the photo



2-3-5 Assemble Top case
Tighten 2 M3 screws.



2-3-6 Turn to the back the photo





2-3-7 Top cover card loss and noumenon groove assembly



2-3-8Screw 2pcs of M3 screw at rear side
(Screwdriver torque : 5.0 ± 0.2 kgf. cm)



2. Table of Screw and Torque

No.	Screw Photo	Position	Q'ty	Screw spec.	Torque	Screw driver spec.
1		Rear side	2	FPH M3- L5	5±0. 2 kgf-cm	Phillips #2
2		HDD	4	FPH M3- L5	5±0. 2 kgf-cm	Phillips #2