

# PP170A Series

17" Panel PC with  
Intel® Core™ Processor



## Features

- 17" 1280\*1024 TFT LCD
- Support for Intel® Core™i7 to Celeron Processors
- DDR3 memory up to 16G
- Resistive type touch screen panel
- SATAII SSD or HDD Storage
- Dual Gigabit Ethernet
- 6 \* USB 2.0/1.1 ports , 1 \* HDMI Port, 2 \* RS232 port

## Introduction

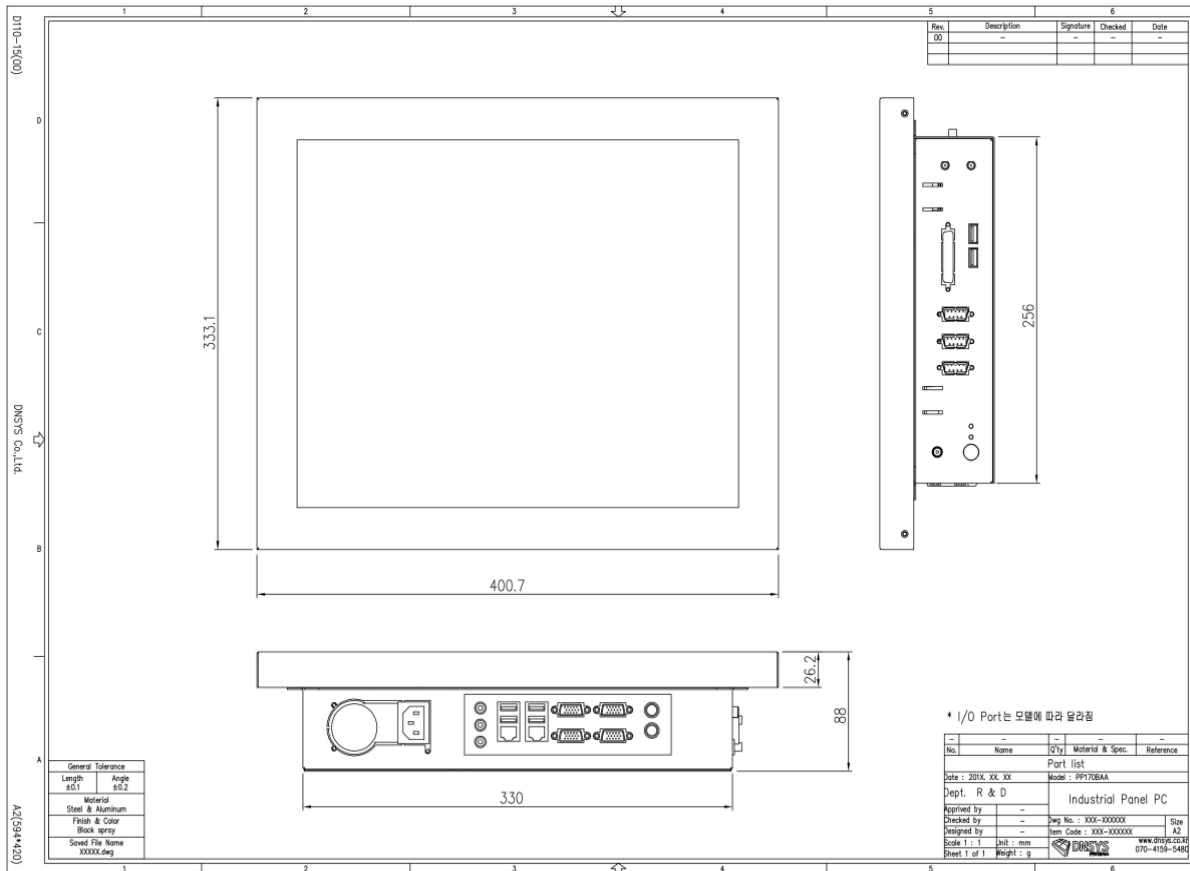
PP170 series is a top performing and highly expandable panel PC. Equipped with a 17" Color TFT LCD, it features high performance, multimedia devices, connectors, and 1 expansion sockets (PCI and PCIe) for high expansion capacity. Because of its multifunctional design, the PP170 series meets demands from multimedia applications and interactive kiosks that require big displays and powerful computing performance.

## Specifications

P C	<b>CPU</b>	Socket LGA1155 for Intel Core i7/i5/i3/Celeron (Ivy Bridge and Sandy Bridge)
	<b>Chipset</b>	Intel® H61 Chipset
	<b>Memory</b>	Supports DDR3 1600MHz, 2 x SO-DIMM, up to 16GB system memory
	<b>Expansion Slots</b>	1 x PCIe x16, 1 x mini-PCIe
	<b>Storage</b>	2 * Serial ATA2 3Gb/s connectors
	<b>Audio</b>	2 (Mic-in, Line-out)
	<b>Ethernet LAN</b>	GbE LAN1: Intel 82583V, LAN2: Intel 82579V
	<b>USB</b>	Rear I/O * 6 (USB 2.0 compliant) , internal *2USB(2.0 compliant)
	<b>Rear Panel I / O</b>	6 * USB 2.0/1.1 ports 1 * PS2/KB Connector 2 * RJ-45 port 2 * COM port ( Max 6*RS232 ,1*RS485 selectable) 1 * VGA port , 1*HDMI 2 * Audio Phone Jack
	<b>Internal I / O</b>	4*RS232 ( 1*RS485 selectable) 4 * SATA2 (3.0Gb/s) 4*GPI + 4*GPO 1* Speaker Header ( 3W amp built-in)
	<b>Power</b>	ATX Power (24*4 pin)
	<b>BIOS</b>	UEFI
	<b>Size</b>	17" TFT LCD
L	<b>Number of Pixel</b>	1280*1024(4:3)
C	<b>Backlight Unit</b>	LED
D	<b>Brightness(cd/m2)</b>	350
	<b>Viewing Angle</b>	85/85/80/80 ( R/L/U/D)

**mobilator<sup>TM</sup>.pl**

## Dimensions



## Feature Details

### Networking

Four serial ports and dual 10/100/1000 Mbps Ethernet port give the PP170 advanced networking capabilities and provide the best solution for versatile applications.

### Expansion

To extend its functionality, the PP170 is designed with one expansion slots for one PCI and one PCIe card, one Mini PCIe slot, six USB 2.0 (Universal Serial Bus) ports, four COM ports. With these expansion capabilities, the PP170 not only functions as an HMI, but also as a computing center around which to build your application.