

I98H5 Compact Tablet PC

(Intel® ATOM Z510 Based Tablet PC)

USERS MANUAL

Version: 1.3

IMPORTANT SAFETY INSTRUCTIONS

Please read these instructions carefully before using the product and save for later reference.

Follow all warnings and instructions marked on the product.

Unplug this product from the wall outlet before cleaning. Clean the product with a damp soft cloth. Do not use liquid or aerosol cleaners as it may cause permanent damage to the screen.

Do not use this product near water.

Do not place this product on an unstable cart, stand, or table. The product may fall, causing serious damage to the product.

This product should be operated from the type of power indicated on the marking label. If you are not sure of the type of power available, consult your dealer or local power company.

This product is equipped with a 3-wire grounding type plug, a plug having a third (grounding) pin. This plug will only fit into a grounding-type power outlet. This is a safety feature. If you are unable to insert the plug into the outlet, contact your electrician to replace your obsolete outlet. (For AC version only)
Do not defeat the purpose of the grounding-type plug.

Do not allow anything to rest on the power cord. Do not locate this product where persons will walk on the cord.

Never push objects of any kind into this product through cabinet slots as they may touch dangerous voltage points or short out parts that could result in a risk of fire or electric shock. Never spill liquid of any kind on the product.

Do not attempt to service this product by yourself, as opening or removing covers may expose you to dangerous voltage points or other risks and will void the warranty. Refer all servicing to qualified service personnel.

Unplug this product from the wall outlet and refer servicing to qualified service personnel under the following conditions:

When the power cord or plug is damaged or frayed.

If liquid has been spilled into the product.

If rainy or water has been exposed to the product.

If the product does not operate normally that the operating instructions are followed. Adjust only those controls that are covered by the operating instructions since improper adjustment of other controls may result in damage and will often require extensive work by a qualified technician to restore the product to normal operation.

If the product has been dropped or the cabinet has been damaged.

If the product exhibited a distinct change in the performance, that indicates a need for service.

Copyright Notice

Copyright © 2008 Winmate Communication Inc., ALL RIGHTS RESERVED. No part of this document may be reproduced, copied, translated, or transmitted in any form or by any means, electronic or mechanical, for any purpose, without the prior written permission of the original manufacturer.

Trademark Acknowledgement

Brand and product names are trademarks or registered trademarks of their respective owners.

Disclaimer

Winmate Communication Inc. reserves the right to make any product changes without notice, including circuits and/or software described or contained in this manual in order to improve design and/or performance. Winmate Communication assumes no responsibility or liability for the use of the described product(s), conveys no license or title under any patent, copyright, or masks work rights to these products, and makes no representations or warranties that these products are free from patent, copyright, or mask work right infringement, unless otherwise specified. Applications that are described in this manual are for illustration purposes only. Winmate Communication Inc. makes no representation or warranty that such application will be suitable for the specified use without further testing or modification.

Warranty

Winmate warrants that each of its products will be free from material and workmanship defects for a period of one year from the invoice date. If the customer discovers a defect, Winmate will, at its option, repair or replace the defective product at no charge to the customer, provided it is returned during the warranty period of one year, with transportation charges prepaid. The returned product must be properly packaged in its original packaging to obtain warranty service.

If the serial number and the product shipping data differ by over 30 days, the in-warranty service will be made according to the shipping date. In the serial numbers the third and fourth two digits give the year of manufacture, and the fifth digit means the month (e. g., with A for October, B for November and C for December).

For example, the serial number 1W08Axxxxxxxx means October of year 2008.

Customer Service

We provide service guide for any problem as follow steps : First, visit the website at <http://www.winmate.com.tw> to find the update information about the product. Second, contact with your distributor, sales representative, or our customer service center for technical support if you need additional assistance. You may have the following information ready before you call :

- Product serial number
- Peripheral attachments
- Software (OS, version, application software, etc.)
- Description of complete problem
- The exact wording of any error messages

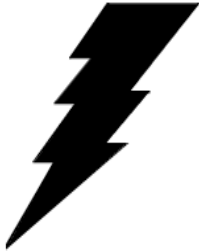
In addition, free technical support is available from our engineers every business day. We are always ready to give advice on application requirements or specific information on the installation and operation of any of our products. Please do not hesitate to call or e-mail us.

Notice

1. Do not touch the LCD panel surface with sharp or hard objects.
2. Do not use abrasive cleaners, waxes or solvents for cleaning, use only a dry or damp, soft cloth.
3. Use only with a high quality, safety-approved, AC/DC power adapter.

Safety Precautions

- **Warning!**



Always completely disconnect the power cord from your chassis whenever you work with the hardware. Do not make connections while the power is on. Sensitive electronic components can be damaged by sudden power surges. Only experienced electronics personnel should open the PC chassis.

- **Caution!**



Always ground yourself to remove any static charge before touching the CPU card. Modern electronic devices are very sensitive to static electric charges. As a safety precaution, use a grounding wrist strap at all times. Place all electronic components in a static-dissipative surface or static-shielded bag when they are not in the chassis.

Compact Rugged Tablet PC

Packaging List

This product is shipped with the items list below. Please make sure that all are in your package.

Item	Description	Note
Default Packing Accessories		
1	1 piece of Rugged Tablet PC Users Manual.	
2	1 piece of CD for System Driver Utility.	
3	1 piece of 12V Adapter w/i Standard Power Cord. (Euro / U.S. Std type, 1.8m)	
4	1 piece of Hand Strap	
5	1 piece of Stylus Pen	
Optional Accessories		
1	1 piece Recovery DVD for Operation System (Windows XP embedded).	Optional with Windows XP embedded /XP Professional Embedded/Windows 7 Pro Embedded pre-installed.
2	1 piece of OS Recovery Users Guide.	Optional with Windows XP embedded /XP Professional Embedded/Windows 7 Pro Embedded pre-installed.
3	1 pieces of Car power charger adapter	
4	protection bag	
5	Portable Printer	

Contents

IMPORTANT SAFETY INSTRUCTIONS.....	2
PACKAGING LIST	10
CHAPTER 1 GETTING STARTED	4
1.1 CONNECTING THE AC POWER	4
1.2 TURNING ON AND OFF THE TABLET PC.....	6
1.2.1 Turning on the Tablet PC	6
1.2.2 Turning off the Tablet PC.....	6
1.3 THE OPTIMIZED USE FOR SUNLIGHT READABLE TOUCH SCREEN.....	7
1.4 TAKING A LOOK AT I/O FUNCTIONS	8
1.5 PRODUCT FEATURES AND SPECIFICATION	12
1.5.1 Product Features	12
1.5.2 Product Specification	13
CHAPTER 2 OPERATING TABLET PC AND HOTTAB HOTKEY UTILITY	16
2.1 STARTING AND STOPPING THE TABLET PC	16
2.2 QUICK TO KNOW MENU AND HOTTAB HOTKEY FUNCTION.....	17
2.2.1 How to use Menu Function	17
2.2.2 How to use HotTab Hotkey Function	20
2.2.3 Connecting to a Wireless Network.....	25
2.2.4 Using the Bluetooth Wireless Feature.....	27
2.2.5 Using the 3G Feature	29
2.2.6 Using the GPS Feature.....	32
2.2.8 Using the Camera Feature.....	35
2.2.8 Using the G-Sensor Feature (Optional)	40
2.2.9 Using the RFID Feature (Optional)	41
2.2.10 Using the Barcode Reader Feature (Optional)	43
CHAPTER 3 TABLET PC POWER MANAGEMENT.....	46
3.1 ABOUT AC ADAPTER	46
3.2 CHARGING AND CHECKING CHARGING STATUS.....	47
3.2.1 Charging the Battery Pack.....	47
3.2.2 Charging Approaches.....	48
3.2.3 Checking the Battery Level	49
3.2.4 Regulating the Battery	50
3.2.5 Battery Low Signals and Actions.....	50
3.3 POWER MANAGEMENT	51
3.4 POWER-SAVING TIPS	52
CHAPTER 4 EXPANDING YOUR TABLET PC	54
4.1 HOW AND WHEN TO USE BIOS SETUP	54
4.2 BIOS FUNCTIONS	55
4.2.1 Main Menu.....	55

4.2.2	<i>Boot Menu</i>	55
4.2.3	<i>Exit Menu</i>	56
CHAPTER 5 DRIVER INSTALLATION		58
5.1	INSTALLATION OF CHIPSET DRIVER INSTALLATION	58
5.2	GRAPHIC DRIVER INSTALLATION.....	62
5.3	AUDIO DRIVER INSTALLATION.....	65
5.4	LAN DRIVER INSTALLATION.....	67
5.5	WIRELESS LAN DRIVER INSTALLATION	71
5.6	BLUETOOTH DRIVER INSTALLATIONS.....	75
5.7	3G MODULE DRIVER INSTALLATIONS.....	77
5.8	GPS MODULE DRIVER INSTALLATIONS	80
5.9	HOTTAB UTILITY DRIVER INSTALLATIONS	83
5.10	TOUCH DRIVER INSTALLATION	85
5.11	SENSOR INSTALLATION	91
CHAPTER 6 CARING YOUR TABLET PC		94
6.1	GENERAL PROTECTION TIPS FOR TABLET PC	94
6.2	CLEANING THE TABLET PC	94
6.3	BATTERY PROTECTION TIPS.....	96
6.4	TOUCH SCREEN PROTECTION TIPS	97
6.5	TROUBLE SHOOTING FROM A TO L.....	98
	A. <i>Battery Problem</i>	98
	B. <i>Bluetooth Transmission Problem</i>	98
	C. <i>Display Problem</i>	98
	D. <i>Date/Time Problems</i>	98
	E. <i>Hardware Driver Problem</i>	99
	F. <i>Hard Drive Problem</i>	99
	G. <i>LAN Problem</i>	100
	H. <i>Power Management Problems</i>	100
	I. <i>Startup Problems</i>	100
	J. <i>Software Problems</i>	101
	K. <i>Sound Problems</i>	101
	L. <i>Wireless LAN Problem</i>	102

CHAPTER 1

Getting Started



CHAPTER 1 GETTING STARTED

This chapter guides you to get the Rugged Tablet PC ready for operating.

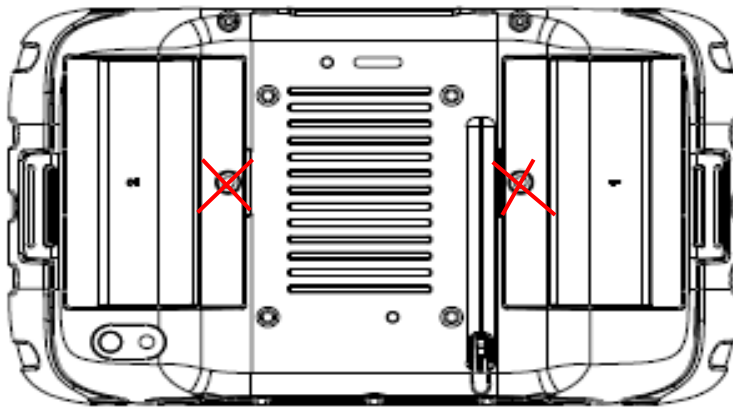
1.1 Connecting the AC Power

Our tablet PC can operate either on the external AC power adapter or internal battery power. It is suggested that you use AC power when you start up the tablet PC first time.

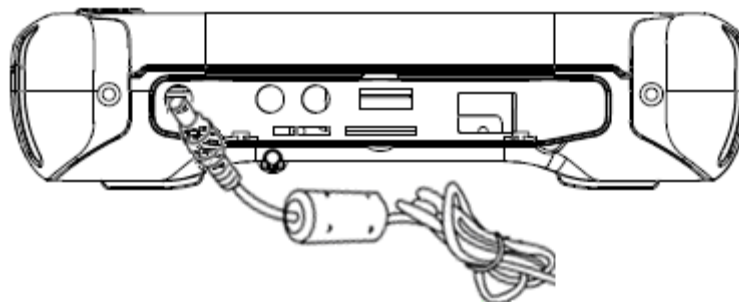
****Caution**

Use only the AC adapter included with your tablet PC. Using other AC adapters may damage the tablet PC.

1. Make sure that the tablet PC is turned off.
2. Place the tablet PC upside down.
3. Please do not open the battery cover, if necessary, return the original service.



4. Plug the DC cord of the AC adapter to the power connector of the tablet PC.
5. Plug the female end of the AC power cord to the AC adapter and the male end to the power electrical outlet.



6. Turn on the Tablet PC few seconds later after power is being supplied from the electrical outlet to the AC adapter.
7. When the AC adapter is connected, the Battery Pack is also under charging. You can check the Battery Status LED indicator to see the currently progress. The indicator turns to green when is fully charged.

(For information on using battery power, see "Chapter 3 The Power Management")

Compact Rugged Tablet PC

****Caution**

When you disconnect the AC adapter, disconnect from the electrical outlet first and then from the tablet PC. A reverse procedure may damage the AC adapter or the tablet PC.

When unplugging the connector, always hold the plug head. Never pull on the cord.

1.2 Turning On and Off the Tablet PC

1.2.1 Turning on the Tablet PC

1. Place your tablet PC on a flat and stable surface or holding the tablet PC on your hand.



2. Make sure that the tablet PC is either connected to AC power or the battery pack with power.

3. Press the power button by 4 seconds to start it.

1.2.2 Turning off the Tablet PC

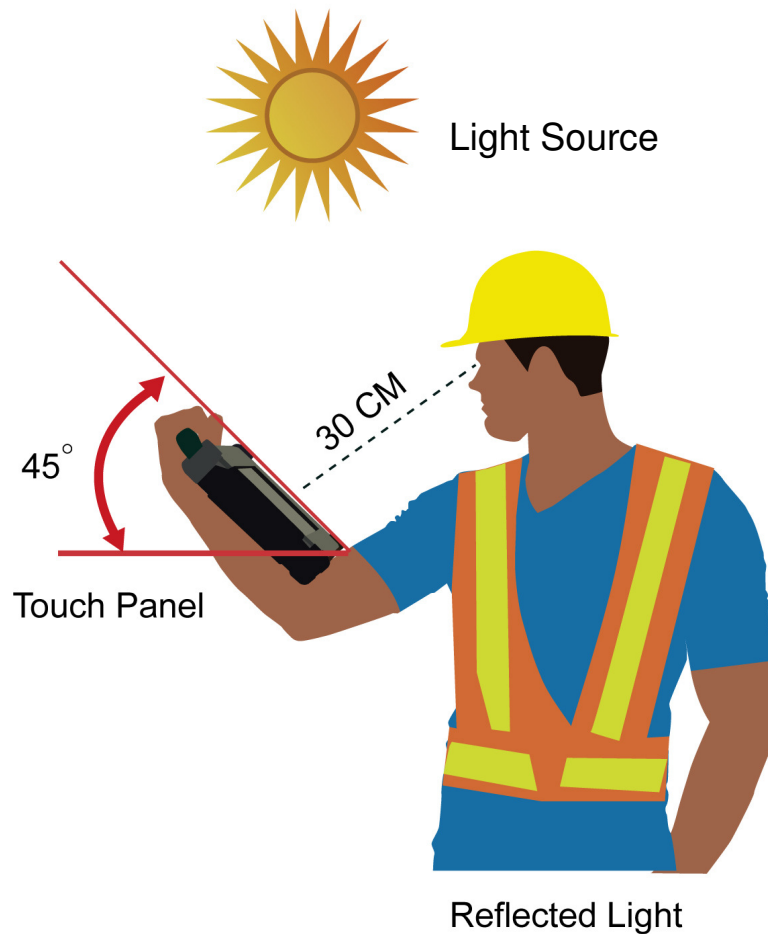
To turn off the tablet PC power, use the "Shut Down" command of your operating system.

****Caution**

If you have to turn the tablet PC on again immediately after turning it off, wait for at least five seconds. Turning the tablet PC off and on rapidly can damage it.

1.3 The Optimized Use for Sunlight Readable Touch screen.

With the imposed reflective function, the modified LCD can reflect the ambient light passing the LCD cell and utilize the reflected light beams as its illumination. The stronger the ambient light is, the brighter the LCD will appear. As a result, the modified LCD is viewable under lighting conditions. The optimized angle of view is forty-five degree. And the optimized distance of view is 30cm.



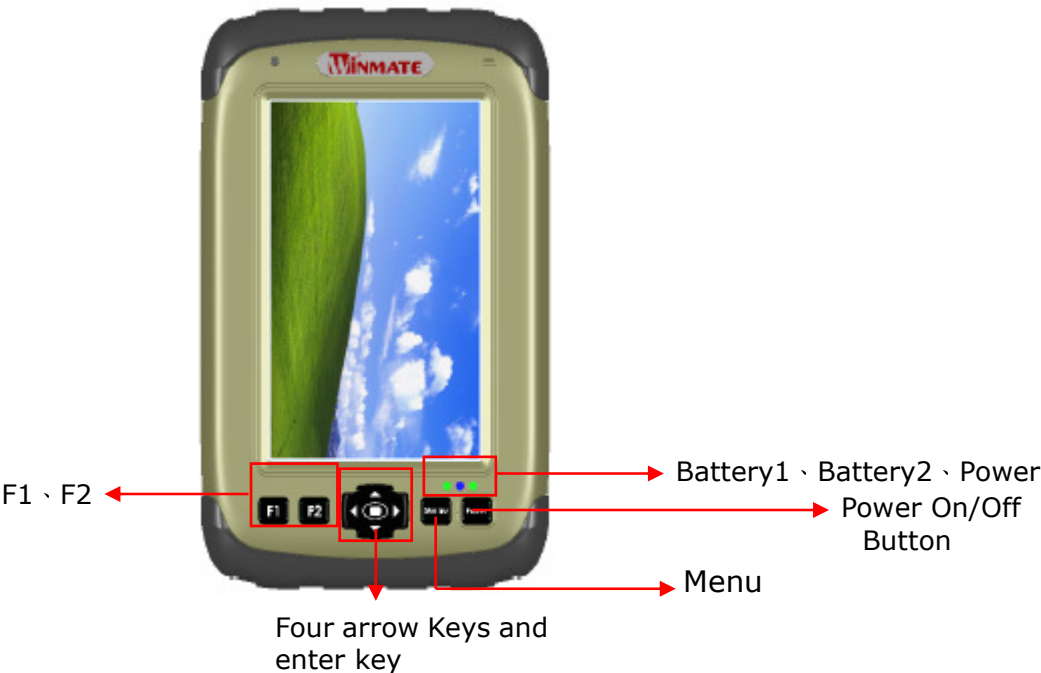
****Caution**

Although transfective LCD is mainly used in outdoor environment and it may increase the reflective lights under sunlight, it is suggested that you should keep the LCD in appropriate temperature for operation and storage, and avoid direct sunlight if possible. To ensure the transfective LCD work stably, 0~50°C (32-121°F) operation and storage temperature is suitable.

1.4 Taking a Look at I/O Functions

This section we will show the Tablet PC external connection parts and their functions.






Front side Control Functions



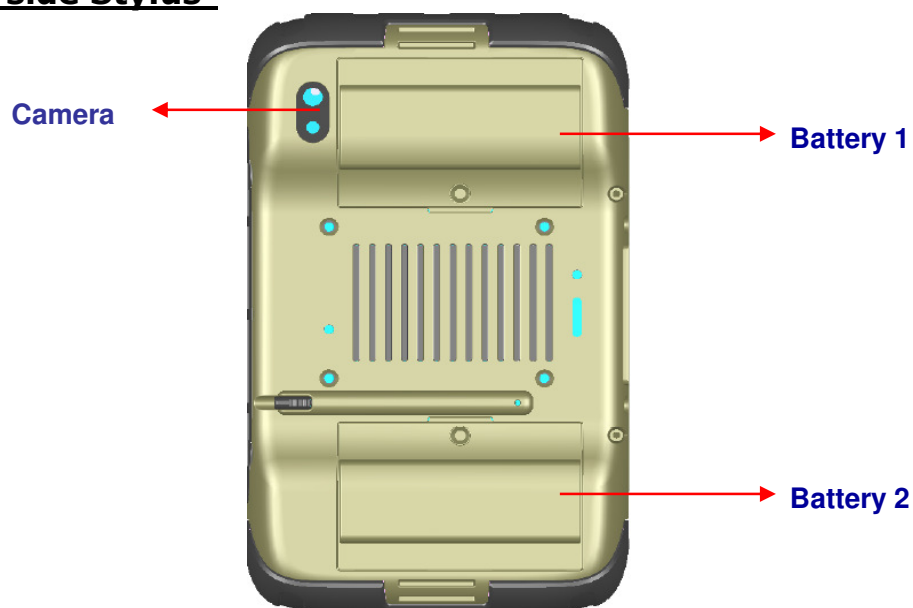
#	Components	Function Description	See Other Intro.
1	Power Button	On <u>Push 4 seconds continuous</u> to turn-on the PC. Need 8 seconds continuous push to force the Tablet PC turn-off immediately.	
2	LED Indicator	From left to right shows the status about Power 、 Battery status	
3	Menu	Push Menu function to show Brightness, Volume,Battery status and WiFi/Bluetooth/3G/GPS/Camera on/off.	
4	Up	Push Up key to increase Brightness or Volume under Menu function.	
5	Down	Push Down key to decrease Brightness or Volume under Menu function.	

6	Hotkey	4 programmable Hot-key for user to define by application, default first short push key (F1 short) will turn-on Hot TAB AP Utility.
---	--------	--

LED Indicator Status Description

LED Term	Power mode	Battery Status	Battery Status	Battery Status
LED Indicator		 		
Indicator Status Description	Green light : when Power On. No light when Power Off.	Orange Light : Battery1 /Battery 2 Under charging/Low battery/No batter exist	Battery indicator off : Battery full charging	Green Light : Main battery using

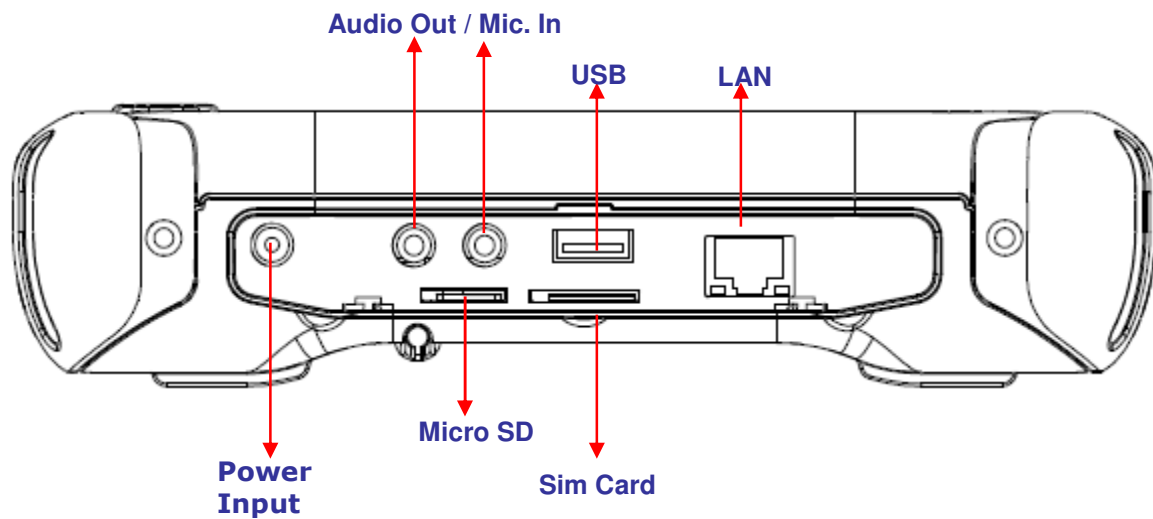
Rear side Stylus



Compact Rugged Tablet PC

The Tablet PC has one stylus pen in accessory. Our default stylus is only recommended for use in our Tablet PC.

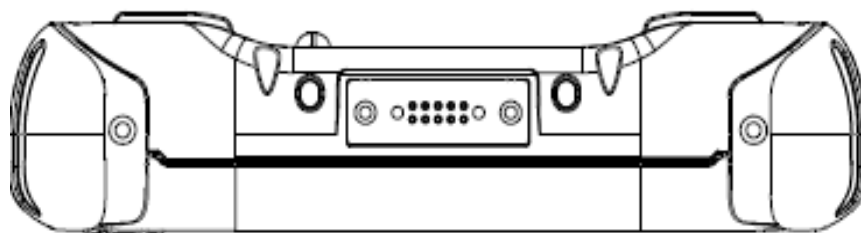
Right side I/O



#	Components	Function Description	See Other Intro.
1	Power Jack	Connect 12V Adapter to the Power jack.	
2	Audio Port	Audio ouput	
3	Audio Port	Microphone input	
4	USB	One USB2.0 compliance ports for user to connect any USB device.	
5	LAN Port	The product can support 10/100/1000 Mbit Giga LAN ethernet, connect RJ-45 LAN cable to LAN port.	
6	Micro SD Card	Up to 16GB SDHC card	
7	Sim Card		

Compact Rugged Tablet PC

Left side I/O



#	Components	Function Description	See Other Intro.
1	Docking Pogo Pin	The Docking slot can connect to docking device as docking cradle, the maximum functi ⁿ of the docking connector can support 1x 9-36V wide range power input, 2 xUSB2.0 ports.2xcom port,1x 10/100 lan port	

1.5 Product Features and Specification

1.5.1 Product Features

Our Rugged Tablet PCs are designed with state of the art industrial use, versatile functionality and solid products. With great mobility support and battery management, our products can fulfill most of outdoor tablet applications. Great thermal conduction and solid mechanical design make our products great reliability in harsh, highly-shock and vibration environment.



- 5.6"/5.7" WSVGA /VGA Resolution TFT-LCD Panel
- Low Power Intel Atom Z510 1.1GHz(Optional For Atom Z530 1.6GHz) + US15W Chipset
- 1 x SO-DIMM Max. 2GB DDR2 667
- Supports Mini PCI-e PATA SSD up to 64GB
- 4 Wire Resistive Touch Screen Integrated with Sunlight Readable Enhances view-ability
- With Protection Rubber for MIL-810F Shock, Vibration and Drop Std.
- Wireless 802.11b/g and Bluetooth Module
- Built- in GPS Module
- 3G Modem/UHF RFID Reader/2D Barcode Reader(Optional)
- Integrate 2M Pixels Camera with flash light.
- Ergonomic Portable Design with Hand strap.
- 2 X 2600mAh Lithium-Ion Battery Pack

Compact Rugged Tablet PC

1.5.2 Product Specification

The product specification as the following table description:

System Specification

System	
Processor	Intel Atom Z510 1.1GHz
BIOS	AMI System BIOS
System Chipset	Intel US15W Chipset
System Memory	1 x SODIMM, Max 2GB DDR2 667(Default 512MB)
LAN Controller	Broadcom BCM57780A1KMLG Chipset, 10/100/1000 Mbps
Storage	mPATA form factor SSD,Max 64GB(Default 8GB)
Audio	Audio out for headset, Microphone-in for microphone jack, 1W Speaker (Internal)
I/O Connectors	
Right I/O Port	1x RJ-45 10/100/1000 Mps LAN ,1x USB 2.0, 1x Audio out, Microphone -in Jack, 1x Power Input Jack,1xSim Card Slot (Optional) ,1xMicro SD Card Slot (Optional)
Left I/O Port	1xDocking Pogo Pin
In Front Control	
Control Button	1x Power button, Menu Key, Up Key, Down Key Down Key to change Brightness, Volume and Battery Status 2x Programmable Hotkeys (Function Keys)
LED indicator	Power On · Off / Battery 1 Status and Battery 2 Status
Display Specification	
Size	5.6 inch / 5.7 inch
Resolution	1024x600 / 640x480 pixels
Touch	4 Wire Resistive (With Sunlight Readable Touch for the best optical performance)

Compact Rugged Tablet PC

System Specification (continues)

Mechanical and Environment	
Weight	930g (w/o accessories)
Operating Temperature	-10 °C to 50 °C
Charging Temperature	0 °C to 35 °C
Operating Humidity	10% to 90% (non condensing)
IP Proof	IP65
Shock	MIL-STD-810F M516.5
Vibration	MIL-STD-810F M514.5
Drop	4 ft, Free to concrete
Certifications	CE, FCC Class B,UL,CCC MIL810F for Vibration /Shock / Drop / Temp.
Power Management	
Power Input	12V DC
Battery	2 X Li-Ion battery 2600mAh, 7.4V
Operating time	Normal battery time : 7 hours
Adapter	100-240V, 50-60Hz, 12VDC
Wireless Communication	
WLAN	802.11 b/g built-in
Bluetooth	Bluetooth (internal by USB module)
WWAN	PCI Express® full size (Type F1) mini-card form factor 3G Modem Supported frequency range : WCDMA Release 99 、HSDPA Release 5 、HSUPA Release 6 、 GPRS 、EGPRS 、CDMA2000 1X 、CDMA2000 1xEV-DO
GPS	GPS Solution
RFID Reader	Support UHF RFID Reader (Optional)
Barcode Reader	Support 2D Barcode reader (Optional)
Sensors	
G-Sensor	Optional

CHAPTER 2

Operating Tablet PC and HotTab Hotkey Utility




CHAPTER 2 OPERATING TABLET PC AND HOTTAB HOTKEY UTILITY

This Chapter will guide you how to operate the Tablet PC, including start / stop the PC, and how to use menu function including basic hardware function adjustment and the HotTab hotkey utility software that is very easy & helpful for operating the computer.

2.1 Starting and Stopping the Tablet PC

Starting the Tablet PC

You always start the tablet PC using the power button (), **push the Power Button continuously by 4 second to turn on the Tablet PC.**

Our Tablet PC will starts up with an operating system (OS) existing on the storage device like the hard disk or compact flash card. The computer will automatically load the OS after you turn it on. This is normal booting process.

NOTE: The operating system is the platform for all software application programs to run on. The Tablet computer is recommended to use the Microsoft Windows XP embedded operating system for default solution.

Stopping the Tablet PC

When you finish your work, you can stop the tablet PC by turning off the power or leaving the tablet PC in Standby mode:

#	Stop mode	How to do	Start or Resume again
1	Power Off	Following the shutdown process during operating system. The standard process can prevent unsave data loss or damage your software programs.	
2	Sleep (S3)	Under normal operating system, Push the Power Button Continuously 4 seconds to show the inquiry action window and choose Sleep option to standby the use.	

If you choose to stop in Standby mode, you can return to where you left off the next time you start up the tablet PC.

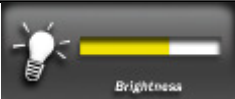
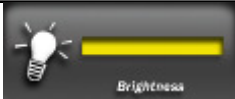
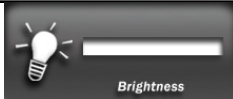

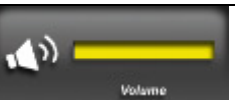

2.2 Quick to Know Menu and HotTab Hotkey Function

This section will introduce you about our easy-of-use front panel functionality. Our Tablet PC front panel buttons support very easy way and useful function to adjust Brightness, Volume and watch Battery current status. For six programmable Hotkey function can also be defined by user to control by their common use application.



2.2.1 How to use Menu Function

Menu Function Adjustment

#	Action	Function Description	Funtion Adjustment		
1	Push "Menu" button 1 st Time	 Show Current Brightness	 Click "Up" button to increase brightness (Or Drag by Touch)	 Click "Down" to decrease brightness(Or Drag by Touch)	
2	Push "Menu" button 2 nd Time	 Show current Volume	 Click "Up" button to increase volume(Or Drag by Touch)	 Click "Down" to decrease volume(Or Drag by Touch)	

Compact Rugged Tablet PC

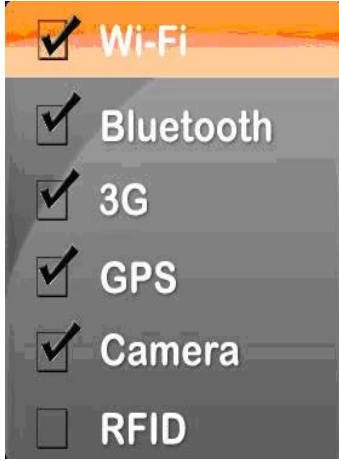



3 Push
"Menu"
button



3rd Time

Show current Battery Usage
and Two BTR status

Menu Function Adjustment

#	Action	Function Description	Funtion Adjustment
4	Push "Menu" button 4 th Time		<p>Show current on/off of Wireless\ Bluetooth mode. This is a mix solution bar with four choices.</p> <ol style="list-style-type: none"> 1. WiFi On/Off 2. Bluetooth On/Off 3. 3G On/ Off 4. GPS On/ Off 5. Camera On/Off 6. RFID On/Off
5	Push "Menu" button continuously 4 seconds	 <p style="text-align: center;">Lock/Unlock all button function</p>	<div style="display: flex; align-items: center;">  <div style="margin: 0 10px;">Push 4 seconds to Lock all button** (not including Touch)</div>  </div> <p>Push 4 seconds to Unlock back to normal operation</p>

****NOTICE**

If you shutdown the Tablet PC during operating system (By Touch) under **Lock** condition, you **CAN NOT** turn on the Tablet PC by Power Button; you should push "**Menu**" **button 4 seconds to Unlock** the system and back to normal operation then you can turn on by power button.

We strongly recommend you to check Lock/ Unlock condition before turn off PC.

2.2.2 How to use HotTab Hotkey Function

From the operation system installation, we will provide you Hot-tab Hotkey software utility. After installation, you can see the shortcut on desktop of computer.

Click the shortcut and you can see the software application at center of desktop.



The HotTab Hotkey software program is the six key programmable application software; we choose some usual applied function for default setup. For example, User can choose his own application program very easy by setting up the function from the setup window.

Hot-Tab Hotkey Function

Use the HotTab software utility to make it easy to program and define hot keys by customer's usual application.

#	Action	Function Description	Funtion Adjustment	See Other Intro.
1	Press "F1"	Default : Hot TAB functions		
2	Hold "F1"	Default : Photography Function	Use "Browse" and choose the execution program file	Long Push: 4sec.
3	Press "F2"	Default : Internet Explorer		
4	Hold "F2"	Default : Media Player		Long Push: 4sec.

Compact Rugged Tablet PC

1. F1 Hot TAB functions will show four functions
 - A. The first is virtual mouse



- B. Screen rotation



Compact Rugged Tablet PC

C. Onscreen Keyboard



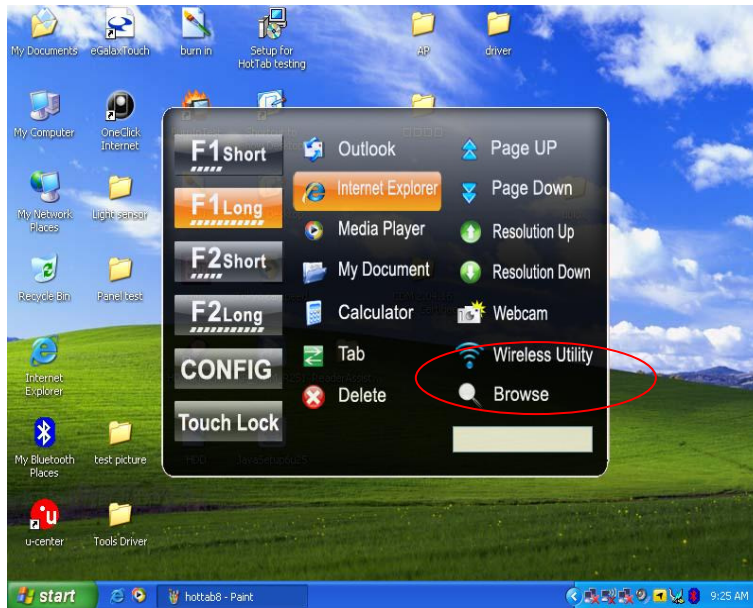
D. Camera



Compact Rugged Tablet PC

2. F2 to F3 function key

You can use "Browse" and choose the execution program file.



3. Power Manage function



Compact Rugged Tablet PC

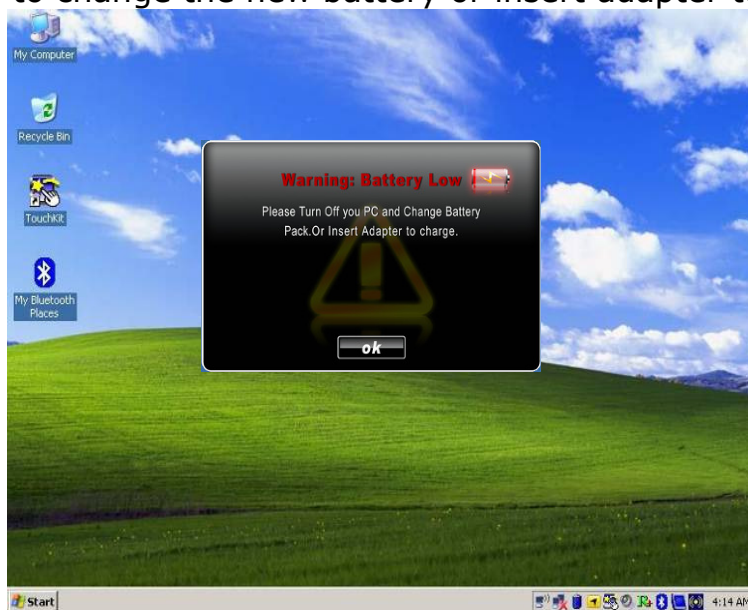
4. System Information

When you press menu 5th time, you can see the system information.



5. Low battery warning:

When the battery under 10%, system will show the battery low to remind you to change the new battery or insert adapter to charge.



Compact Rugged Tablet PC

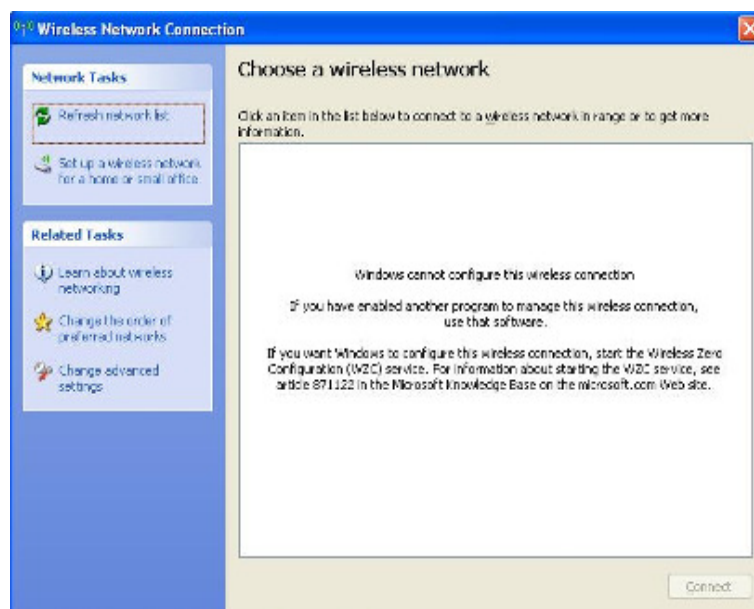
2.2.3 Connecting to a Wireless Network

To connect to a wireless network:

1. Push Menu function and making sure the Wireless function is "On".

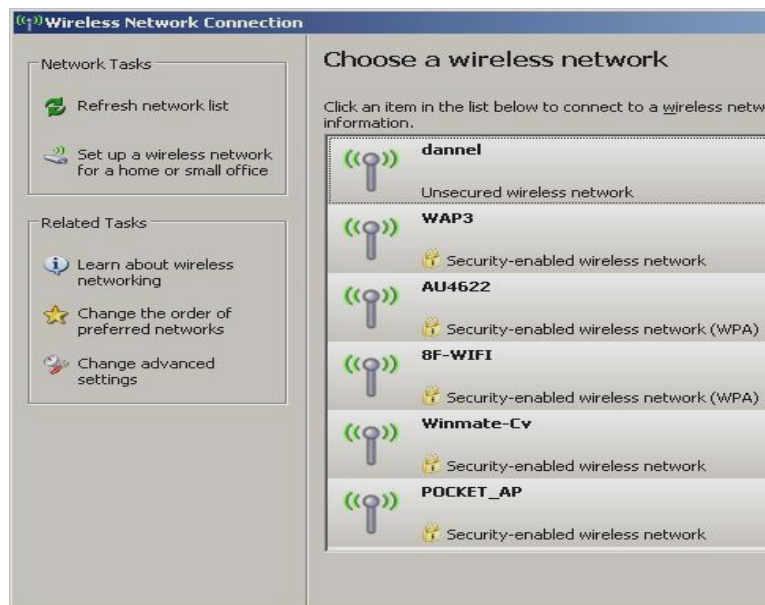
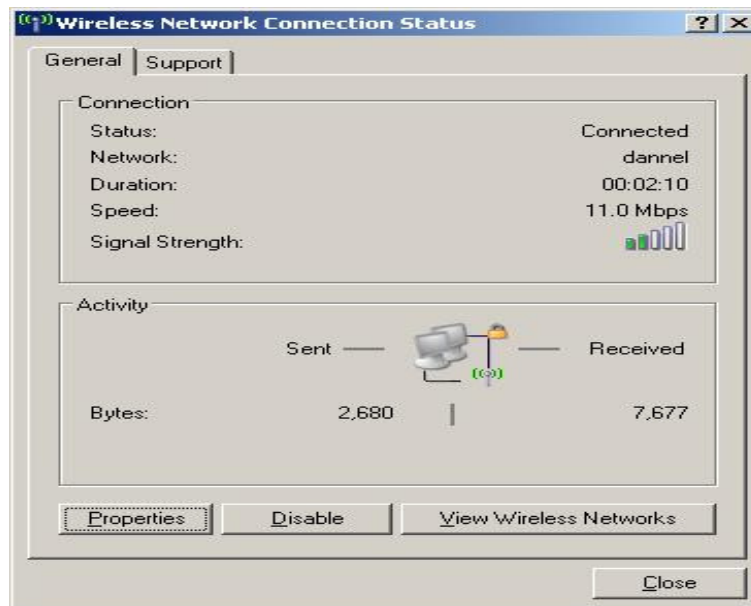


2. Please using the default Windows **Wireless Network Connection** utility.



Compact Rugged Tablet PC

3. Click the "View Wireless Networks" to confirm all the networks around you.



Compact Rugged Tablet PC

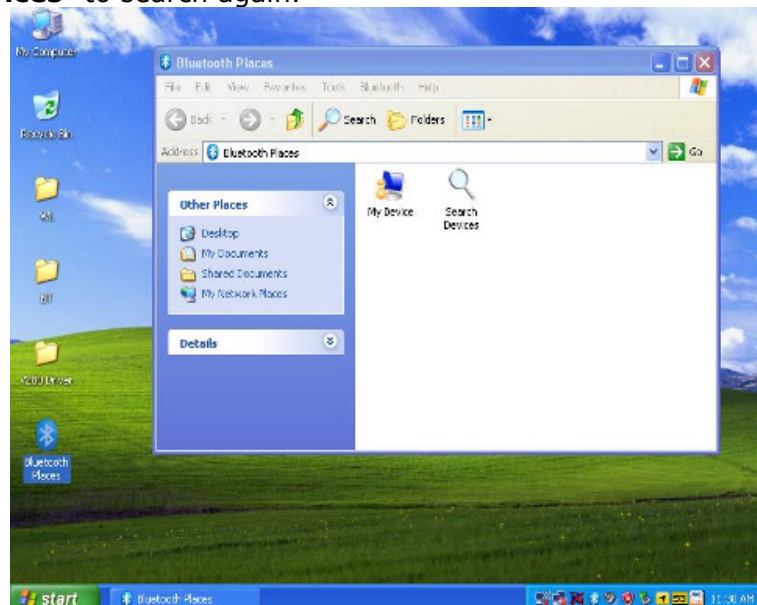
2.2.4 Using the Bluetooth Wireless Feature

We apply Bluetooth 2.1+ EDR module for default function of the Tablet PC series. Depending on your application, the Bluetooth module can give you capability for short-range wireless communications between devices without requiring a cable connection. The transmission can go through walls, pockets and briefcases as long as two devices are within range around 10 meters. Following the easy step to connect to the Bluetooth communication.

1. Choose **HotTab AP** Menu function and making sure the Bluetooth function is "On".

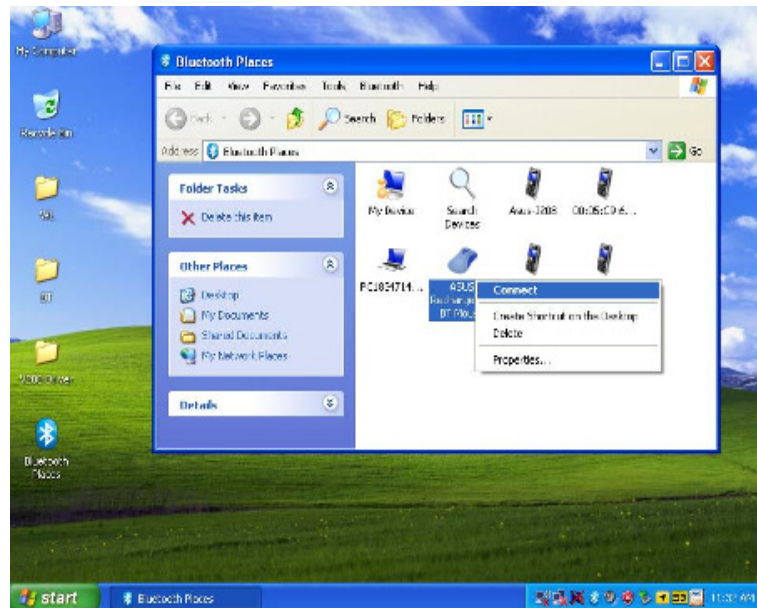


2. After installing the driver utility, the Bluetooth shortcut will shown on screen, double click the shortcut and it will search any bluetooth device automatically. Or double click "**Search Devices**" to search again.

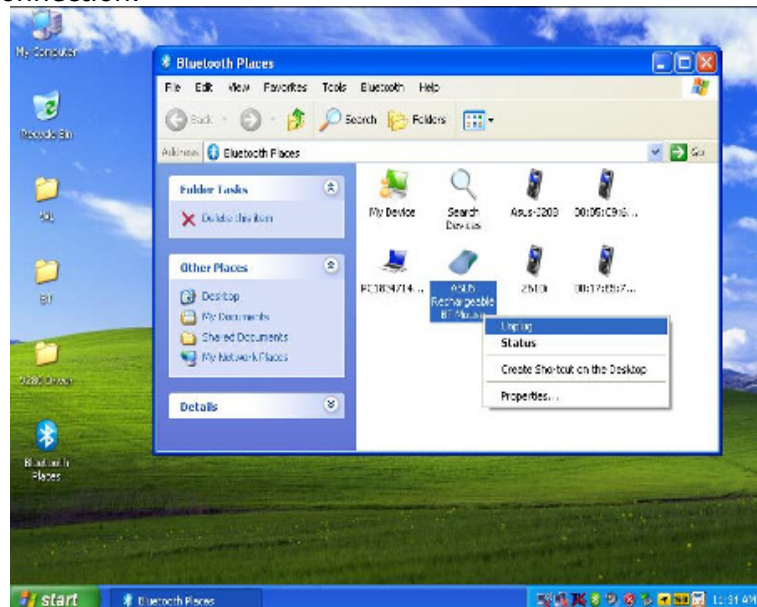


Compact Rugged Tablet PC

3. Choose the bluetooth device you want to connect, and left click to choose "**Connect**". Then the device will be connected to the module.



4. When under connecting, left click to check the connection status, or choose "**Unplug**" to remove the connection.



Compact Rugged Tablet PC

2.2.5 Using the 3G Feature

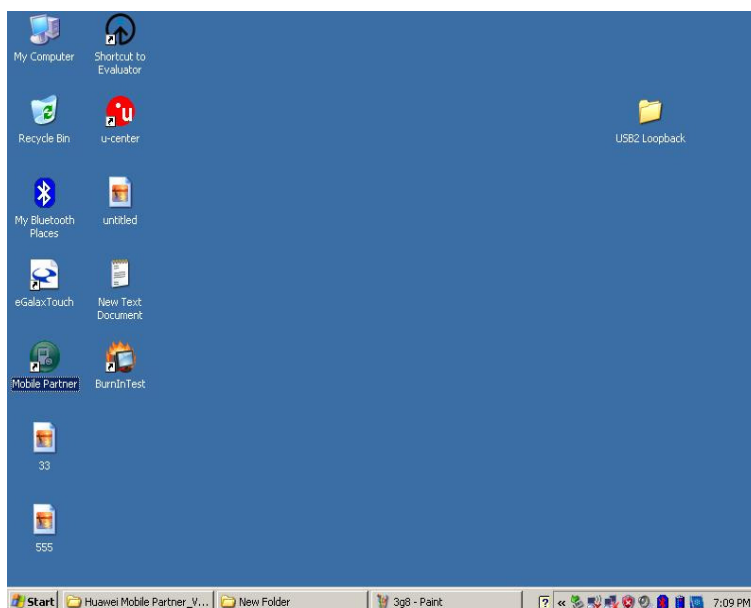
※**Before plug sim card , please turn off power to avoid damage the sim card**

We apply a PCI Express® full size 3G module for default function of the Tablet PC series. Depending on your application, the 3G module can datacard and host PC software combination deliver multiband HSPA/UMTS , EDGE/GPRS , WCDMA/GSM connectivity in a single hardware configuration.

1. Choose **HotTab AP** Menu function and making sure the 3G Module is "On".

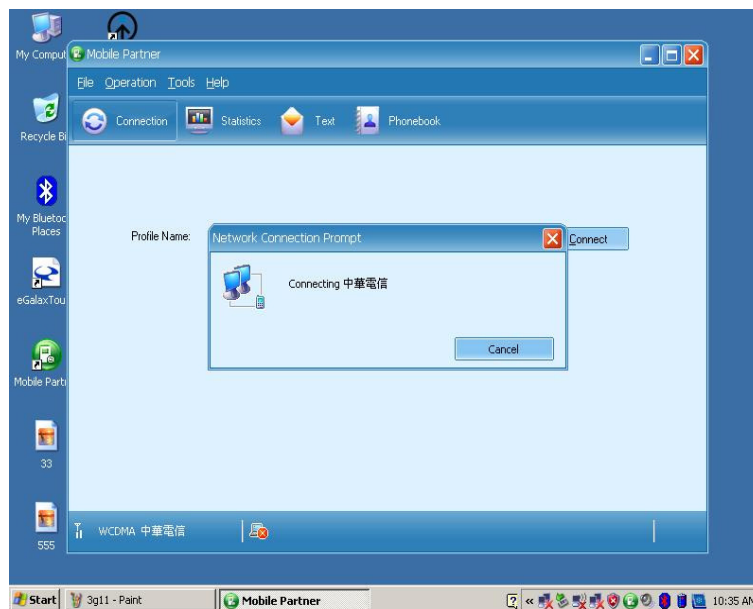
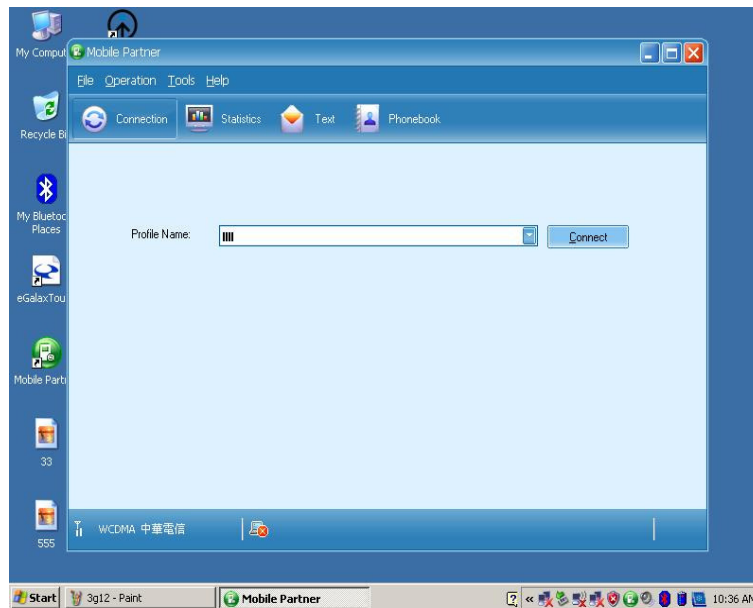


2. After installing the driver utility, the shortcut of 3G application program will shown on screen, then to executive Mobile Partner Internet connection management application.



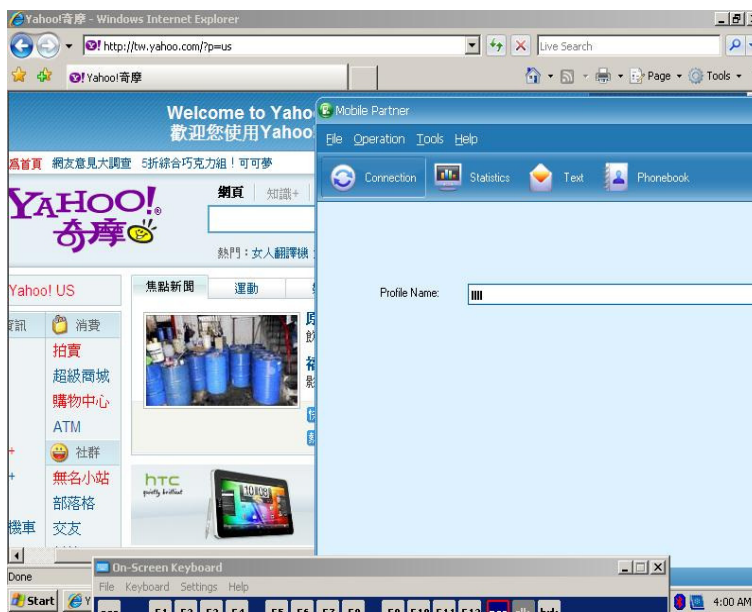
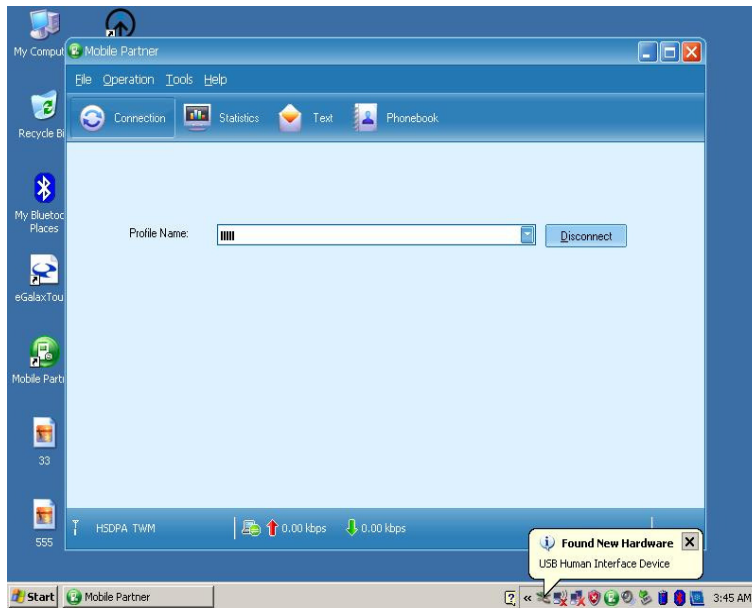
Compact Rugged Tablet PC

3. Confirm whether to detect the telecommunications system operators, then press the "Connect" connect to 3G networks.



Compact Rugged Tablet PC

4. After completion of initialization will automatically connect to 3G networks.



Compact Rugged Tablet PC

2.2.6 Using the GPS Feature

Following the step by step to finish the driver installation

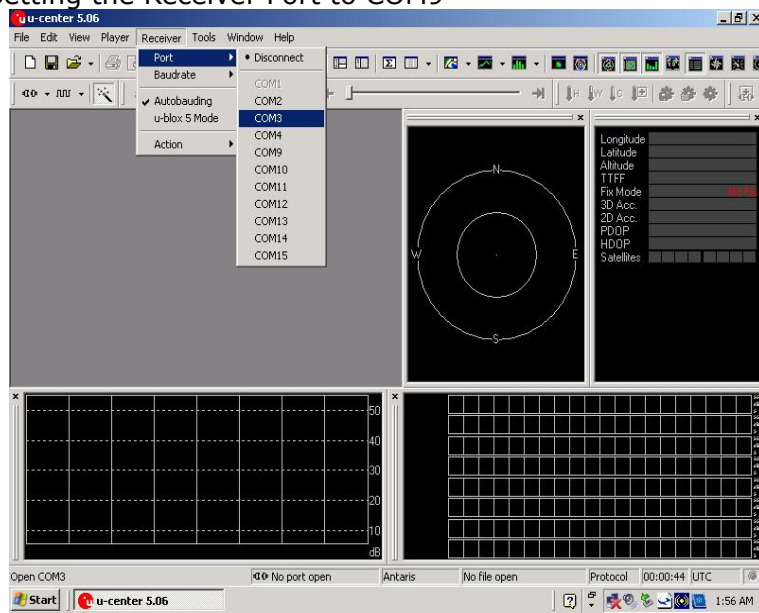
1. Choose **HotTab AP** Menu function and making sure the GPS Module is "On".



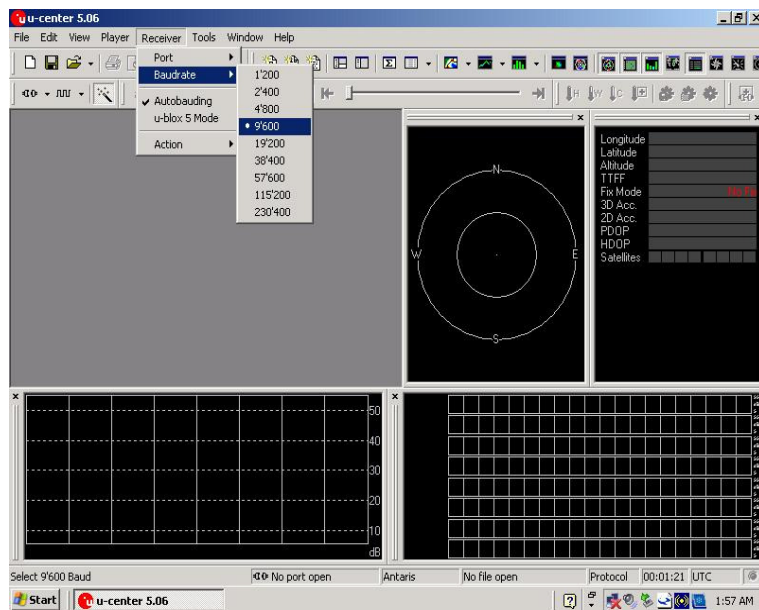
2. Click the u-center icon to start the GPS function settings.



3. Setting the Receiver Port to COM9

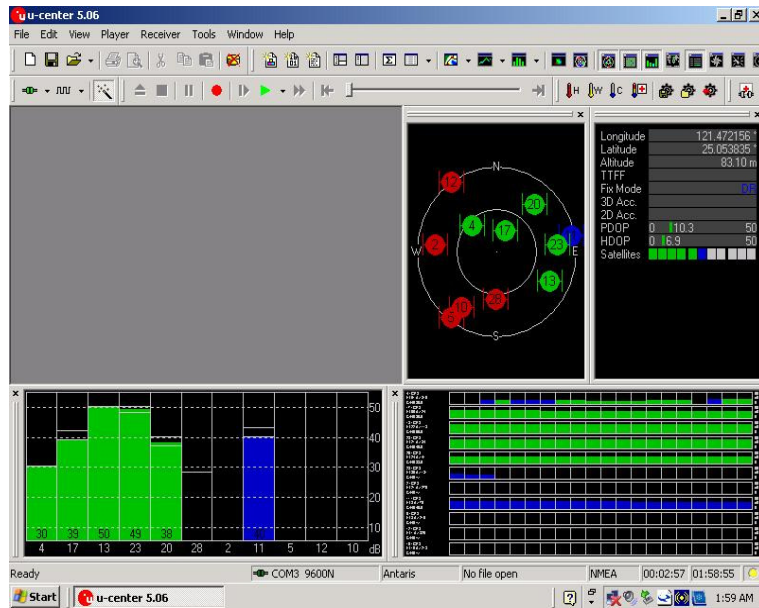


4. Setting the Receiver Baudrate to 9600

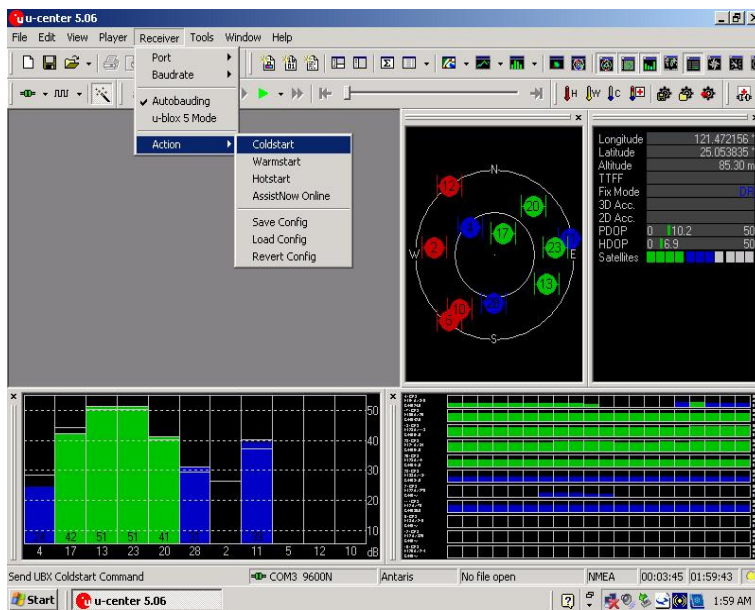


Compact Rugged Tablet PC

5. GPS Module will start Cold Start. When the positioning is complete, the Fix Mode will appear as DR



6. You can choose coldstart, warmstart or Hotstart from Receiver Action



Compact Rugged Tablet PC

2.2.8 Using the Camera Feature

We apply a internal 2M Pixels Camera module for default function of the Tablet PC series.

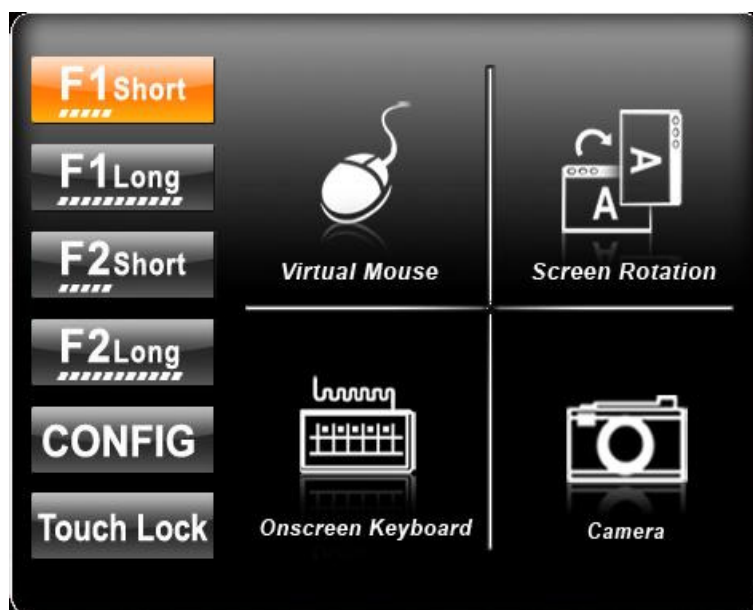
1. Choose **HotTab AP** Menu function and making sure the Web Cam Module is "On".



2. Press F1 button to into the functional hot key setting then click the

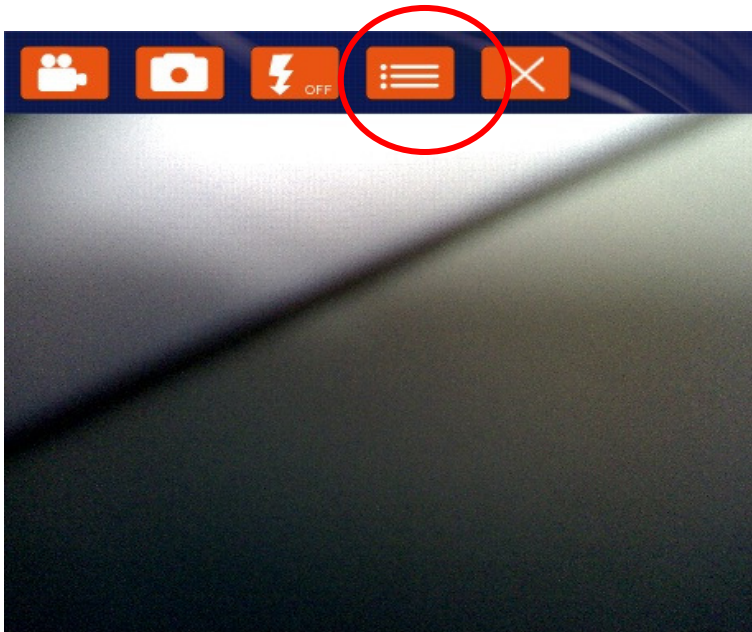


icon to

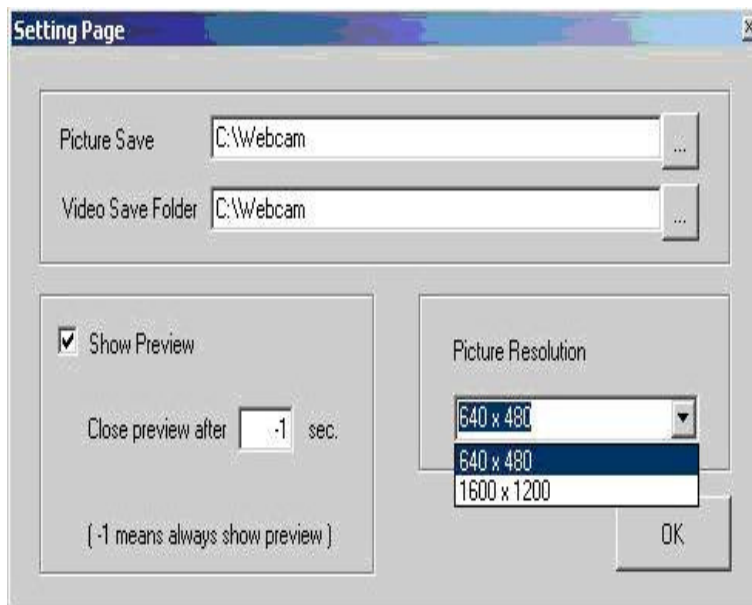


Compact Rugged Tablet PC

3. Setting the image pre-view resolution .



4. When you set the pre-view resolution to 640*480, the final picture resolution is also 640*480..



Compact Rugged Tablet PC


5. You can choose any functional key as a shortcut to open the take a video. For example, you can set "F2 Long" as the camera video function.

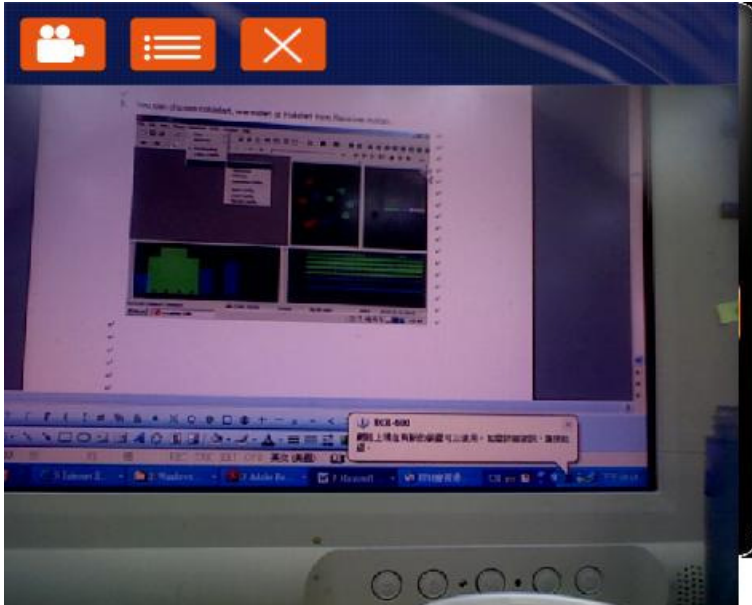


6. Click the  icon to initialize the video function.



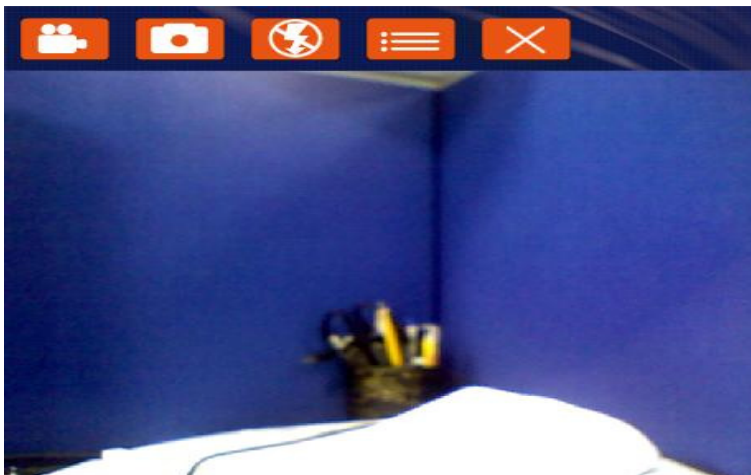
Compact Rugged Tablet PC

7. Click the  icon to start to take a video.



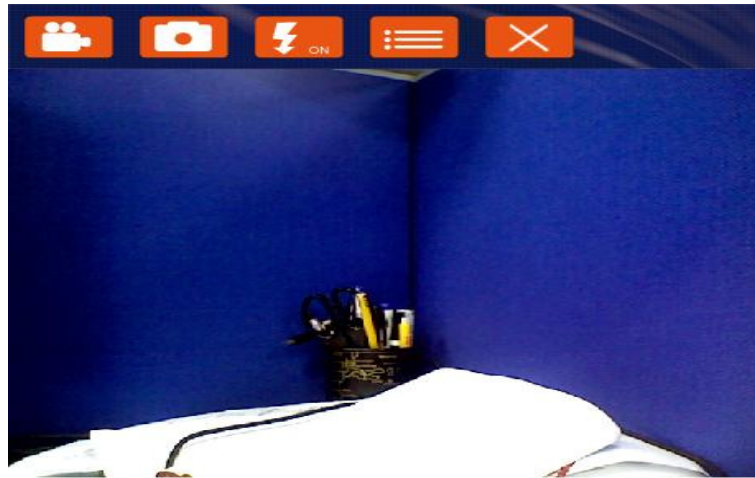
8. There are 3 different kinds of flash light control function .They are include "OFF","ON" and "Auto". "OFF" 、 "ON""Auto"

"OFF"

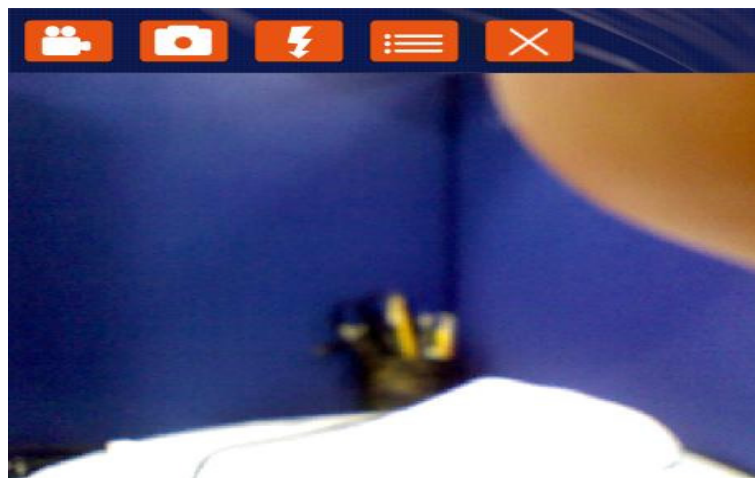


Compact Rugged Tablet PC

"ON"



"AUTO"



Compact Rugged Tablet PC

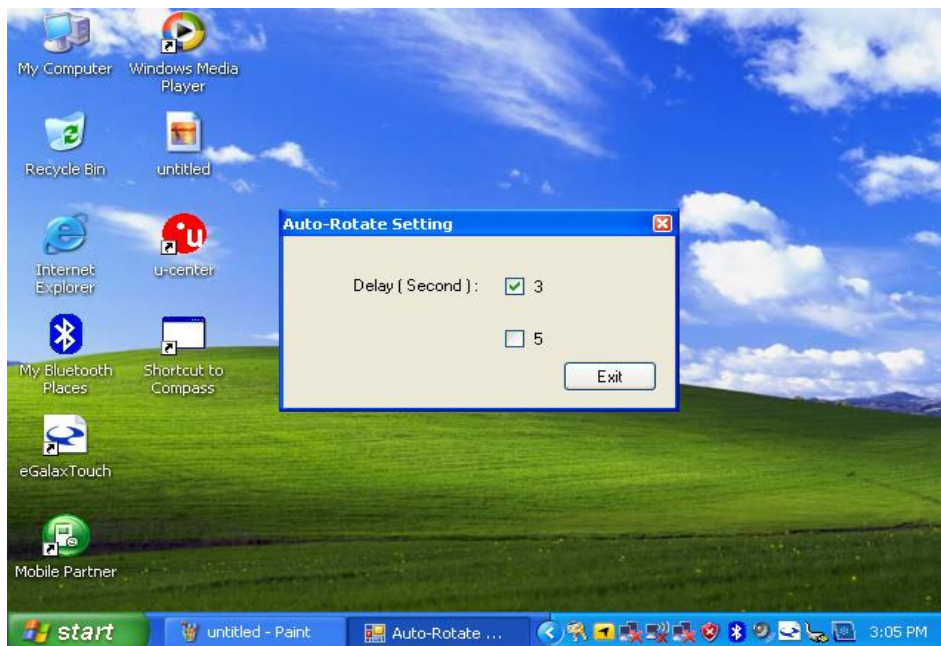
2.2.8 Using the G-Sensor Feature (Optional)

We apply a internal 3-Axis motion accelerometer module for optional function of the Tablet PC series.

1. Choose **HotTab AP** Menu function and making sure the Auto-Rotated is "On".



2. Choose "Delay" choice box, you can do the G-Sensor delay time setting.

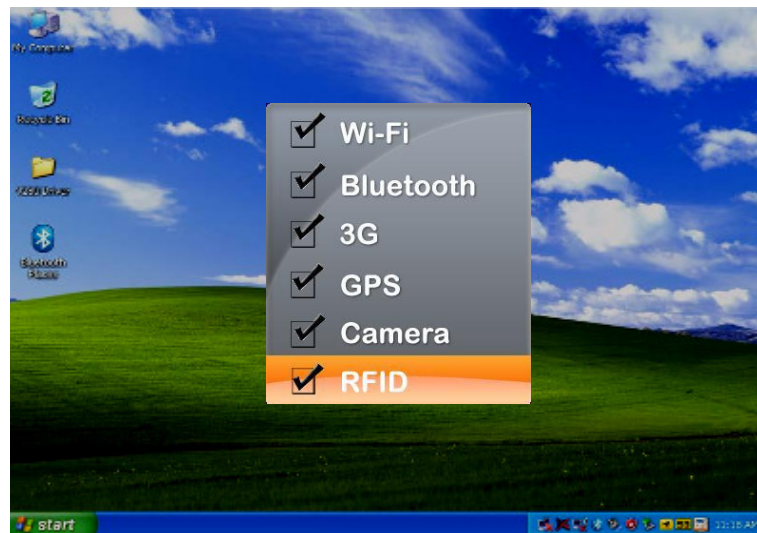


Compact Rugged Tablet PC

2.2.9 Using the RFID Feature (Optional)

In the Hottab, please select the "RFID" check box, if you want to use the UHF RFID function .

1. Choose **HotTab AP** Menu function and making sure the RFID is "On". (Default is off.)

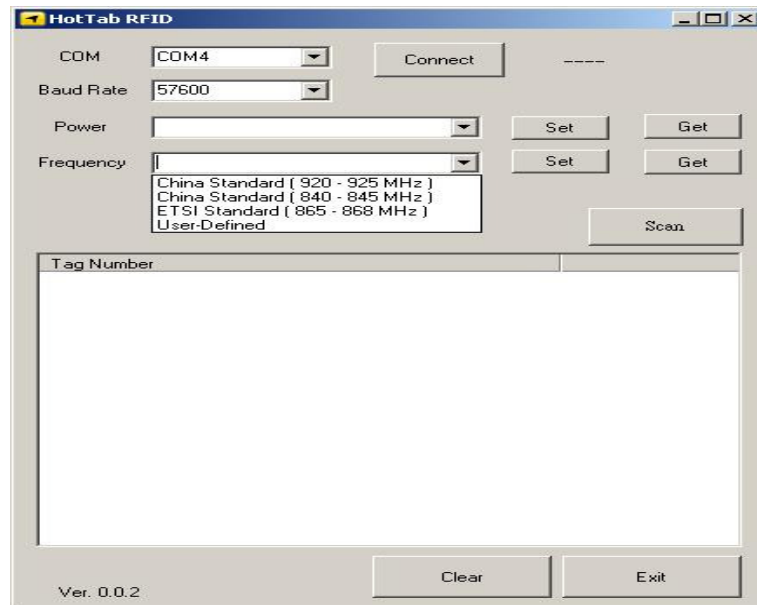


2. You can choose any functional key as a shortcut to open the take a video. For example, you can set "F2 Short" as the RFID function.



Compact Rugged Tablet PC

- 3 You can depend on your own country or region to select the appropriate RFID frequencies. Setting the COM Port to COM14 and the Baud Rate as 57600. To start to read the tag number, please press "Connect". To exit this program, please press "exit"



User-defined model of effective frequency range is 840-960MHz.

Compact Rugged Tablet PC

2.2.10 Using the Barcode Reader Feature (Optional)

1. Choose **HotTab AP** Menu function and making sure the Barcode Reader power is "On".
(Default is off.) .Then please restart computer let the barcode reader can be initialized.

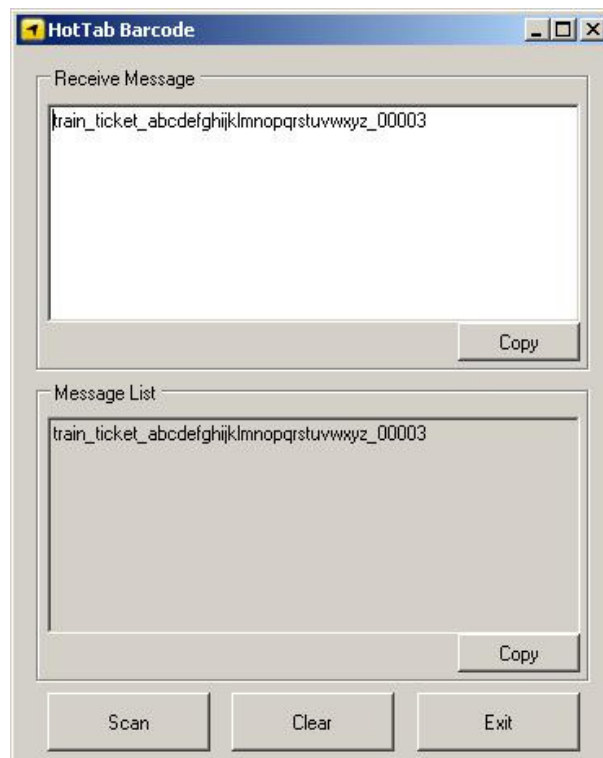
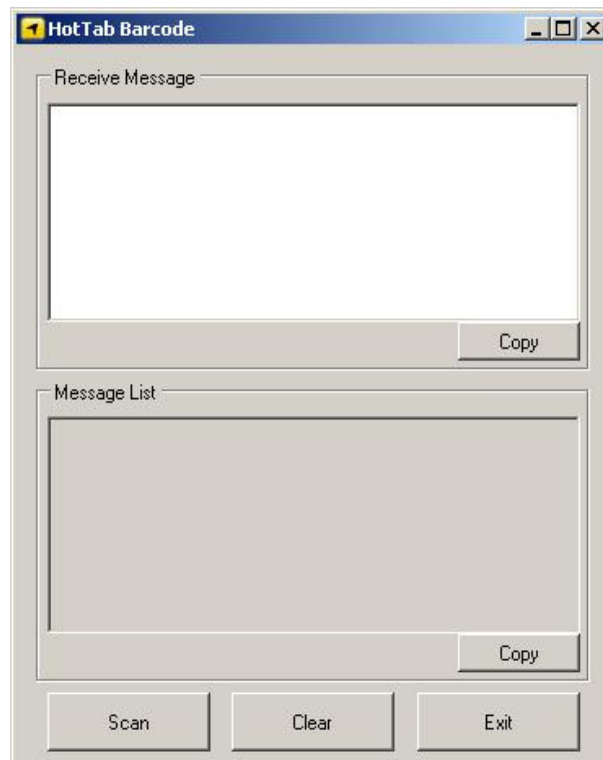


2. You can choose any functional key as a shortcut to open the take a video. For example,you can set "F2 Long" as the Barcode function.



Compact Rugged Tablet PC

- 3 Please click "Scan" button to start using the barcode reader



CHAPTER 3

Tablet PC Power Management



CHAPTER 3 TABLET PC POWER MANAGEMENT

3.1 About AC Adapter

Our Tablet PC support one set of AC adapter and power code by country area. Please confirm with your dealer for appropriate power code if necessary.



****Caution**

- 1. When you disconnect the AC adapter, disconnect from the electrical outlet first and then from the tablet PC. A reverse procedure may damage the AC adapter or tablet PC.**
- 2. Always hold the plug head when you unplug the connector, Never pull on the cord.**
- 3. The AC adapter is designed for use with your tablet PC only. Connecting the AC adapter to another device can damage the adapter.**

The adapter operates on any voltage in the range of 100~240 V AC. The AC adapter serves as a converter from AC (Alternating Current) to DC (Direct Current) power because the tablet PC runs on DC power input, but an electrical outlet usually provides AC power. It also charges the battery pack when connected to AC power.

3.2 Charging and Checking Charging Status

3.2.1 Charging the Battery Pack

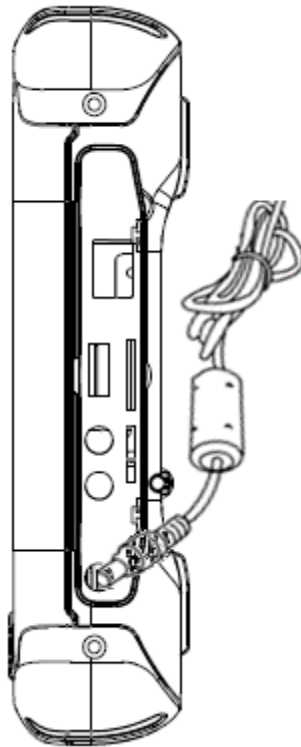
The battery pack is the internal power source for the tablet PC. It is rechargeable using the AC adapter. The operating time of a fully charged battery pack depends on how you are using the tablet PC. When your applications often access peripherals, you will experience a shorter operating time.

NOTE:

- 1. To prevent damage, the charging process may stop and the Battery Charge Indicator flashes red when the environmental temperature gets above 35 °C (90°F)**
- 2. The battery level may automatically lessen due to the self-discharge process (0.21 % per day), even when the battery pack is fully charged (100 %). This happens no matter if the battery pack is installed in the tablet PC.**

3.2.2 Charging Approaches

1. By connecting the AC adapter to the tablet PC and an electrical outlet. The Battery Charge Indicator on the tablet PC glowed red to indicate that charging is in progress. You are advised to keep the tablet PC power off while the battery is being charged. When the battery is fully charged, the Battery Charge Indicator glows green.
2. Please remain the tablet upright when the charging is in process.



CAUTION:

1. **After the tablet PC has been fully recharged, do not immediately disconnect and reconnect the AC adapter to charge it again. The above-mentioned may damage the battery.**
2. **During charging, do not disconnect the AC adapter before the battery has been fully charged; otherwise you will get a prematurely charged battery.**

Compact Rugged Tablet PC

3.2.3 Checking the Battery Level

Any battery level indication is an estimated result. The actual operating time can be different from the estimated time, depending on how you are using the tablet PC.

In Windows operating system, you can check the approximate battery level using the battery meter function. To read the battery level in Windows, click the icon on the taskbar. (Click the icon if the tablet PC is using AC power.)

Or just push the **HotTab Menu Utility** Function three times to show the battery status.



Use the stylus pen to choose the battery icon to swap the current battery

3.2.4 Regulating the Battery


If the battery is used frequently, recommend you to regulate the battery every month. And if you have following conditions, please regulate the battery immediately:

- The battery status is incorrect battery level.
- The battery pack is not use above one month.

The battery work time hav

1. **Please plug-in an AC adapter** to supply power, it will recalibrate the gauge of battery now.
2. Initialize battery and adjust LCD brightness. It is charging the battery, the waiting time depend on the battery level between few second and four hours.
3. While the battery is fully charged, please remove the AC adapter and **LEAVE the Battery RUNNING OUT OF POWER** that normally need to wait for few hours
4. While the power level running out, you can charge the battery again. When the battery is fully charged, it's finished to regulate. You can turn on the tablet PC to normal use.

3.2.5 Battery Low Signals and Actions

Battery Low occurs when the battery has approximately 10 % (Windows default setting) of its charge remaining. The tablet PC's Battery Charge Indicator () **blinks red to alert you take actions.**

NOTICE:

1. **You can set up the Battery Low threshold and signals under Windows. Immediately save your data upon Battery Low. The remaining operating time depends on how you are using the tablet PC. If you are using the audio subsystem, PC card, hard or USB flash disk, the battery might run out of charge very quickly.**
2. **Always respond to Battery Low by placing your tablet PC on the Standby or Hibernation mode, turning off the tablet PC, or connecting the AC adapter.**

CAUTION:

1. **If you do not take any action, the tablet PC will automatically hibernate and turn off.**
2. **If you are using a PC card, do not access the card during battery low periods. The access may takes longer time than battery to run out of charge, thus making your access to the card fail.**
3. **If you fail to save your data when the battery completely runs out of charge, then you will lose your data.**

3.3 Power Management

Our Rugged Tablet PC series support ACPI (Advanced Configuration and Power Interface) for power management. The power management feature allows you to reduce the power consumption for energy saving. With an ACPI-compliant operating system such as Windows XP, power supply to different tablet PC components is controlled on an as-needed basis. This allows maximum power conservation and performance at the same time. In general, Windows' power management works in following state:

Occurrence	Condition
Power to the hard disk is turned off	When the hard disk has been idle for a set period.
Power to the display is turned off	When the display has been idle for a set period. When the entire system has been idle for a set period.
The tablet PC enters the Standby mode. The hard disk and display are turned off and the entire system consumes less power.	When the display has been idle for a set period. When you press the power button. *
The tablet PC enters the Hibernation mode.	When the entire system has been idle for a set period When you press the power button. *

* Depends on your settings in Windows.

For detailed information on power management, see Windows' Help.

3.4 Power-Saving Tips

The following are some Power-Saving Tips suggestions to maximize the battery's operating time.

- Do not disable Power Management.
- Decrease the LCD brightness to the lowest comfortable level.
- Shorten the length of time before Windows turn off the display.
- USB devices use power just by being connected. If you use a USB mouse, you can save power by disconnecting the mouse and using the optional touchscreen pen.
- If you use a USB flash drive, unplug it when you are not using it.
- activate the Wireless LAN function if you are not using it (see Chapter 2).
- Deactivate the Bluetooth wireless feature if you are not using it (see Chapter 2)
- Turn off the tablet PC when you are not using it.

CHAPTER 4

Expanding Your Tablet PC



CHAPTER 4 EXPANDING YOUR TABLET PC

4.1 How and When to Use BIOS Setup

For enter to the Tablet PC BIOS setup, you need connect to external usb keyboard, press "**Del**" key when the prompt appears on the screen during start up. The prompt screen shows only few seconds so need press Del key quickly.

****NOTICE**

Updated BIOS version may be published after the manual is released. Check with the latest version of BIOS on website.

You may need to run BIOS setup utility when the below status.

1. Error message on screen indicate to check BIOS setup.
2. Restoring the factory default settings.
3. Modifying the specific hardware specification
4. Want to optimize the specification.

To control the keyboard to select BIOS utility setup, you need

Keyboard Icon	Function Description
← , →	Selects a menu title
↑ , ↓	Selects an item or option
Enter	Go to the sub-menu when available Opens or closes the option window when an item is selected
Esc	To leave sub-menu and return to main menu.

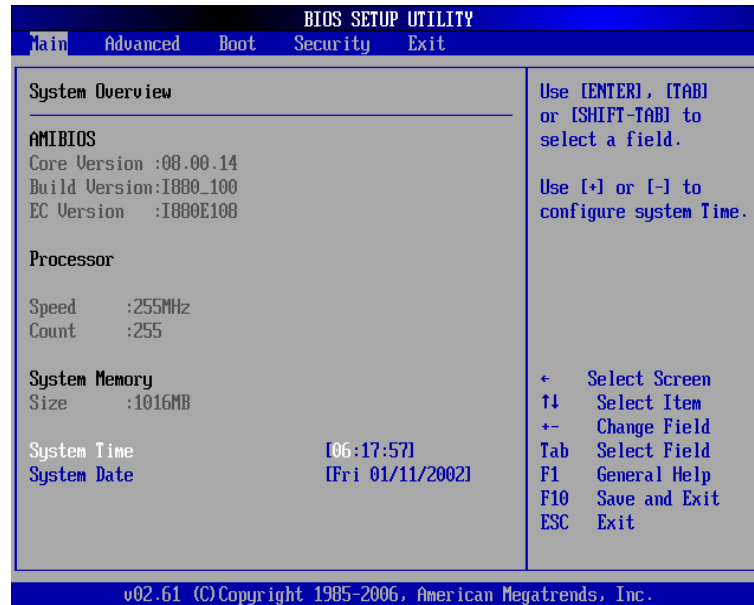
****NOTICE**

You can press the F1, F9, F10, -/+, and Esc keys by connecting a USB keyboard to your tablet PC. Make sure that the item "**Legacy USB Support**" under the Main menu is set at Enabled (default).

4.2 BIOS Functions

4.2.1 Main Menu

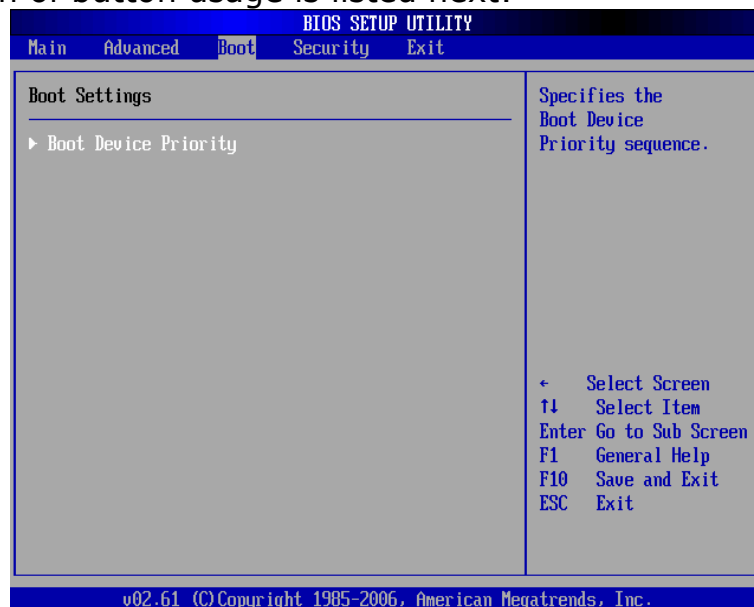
The main menu contains the information of the Tablet system including BIOS version, processor, system memory, time, and date.

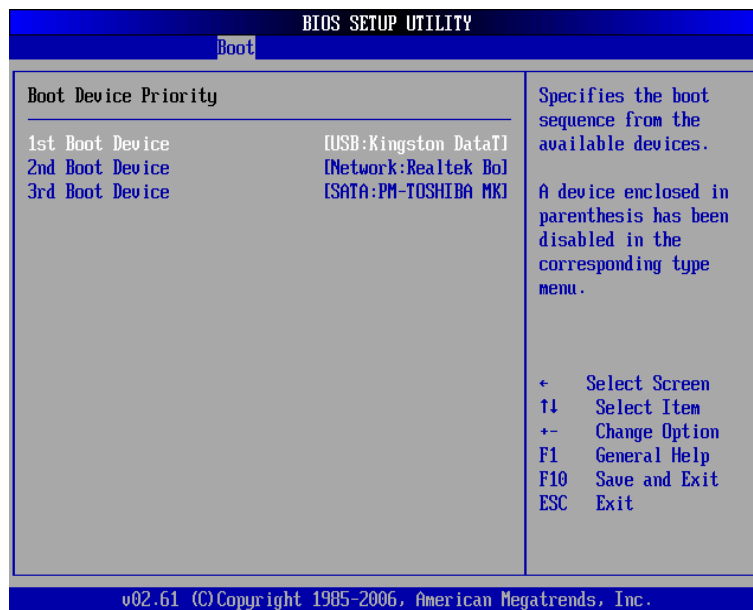


4.2.2 Boot Menu

The Boot menu sets the sequence of the devices to be searched for the operating system.

The bootable devices will be automatically detected during POST and shown here, allowing you to set the sequence that the BIOS uses to look for a boot device from which to load the operating system. A brief description of button usage is listed next:





Check the Hard Disk Device in **Hard Disk Drives**.

4.2.3 Exit Menu

The Exit menu displays ways of exiting BIOS Setup utility. After finishing with your settings, you must save and exit so that the changes can take effect.

Save Changes and Exit saves the changes you have made and exits BIOS Setup utility.

Discarding Changes and Exit exits BIOS Setup utility without saving the changes you have made.

Discard Changes restores the previous values for all the items.

Load Optimal Default loads the factory default values for all the items.

CHAPTER 5

Driver Installation

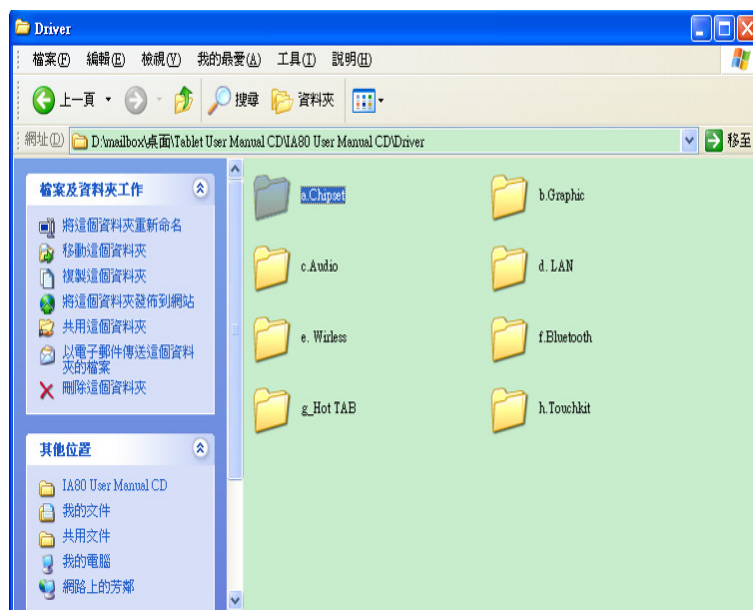


CHAPTER 5 DRIVER INSTALLATION

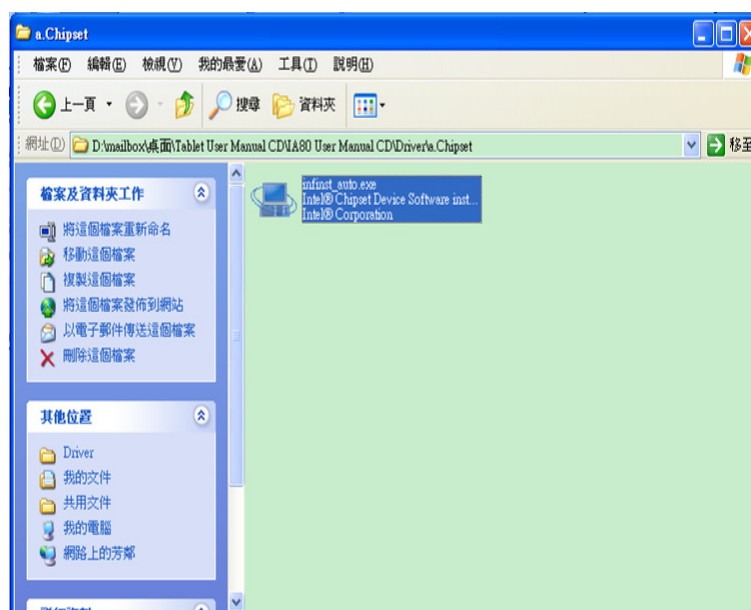
Through Chapter 5.1 to 5.8 to go further for Rugged Tablet PC driver installation guide, you can easily install all related drivers if with out operation system by yourself. **The default system will include operation system and you do need to install any of drivers at first time use.**

5.1 Installation of Chipset Driver Installation

Step.1 Insert the Driver Utility CD. Open the file document "Chipset".



Step.2 Click on "infinst_autol.exe" to install driver.



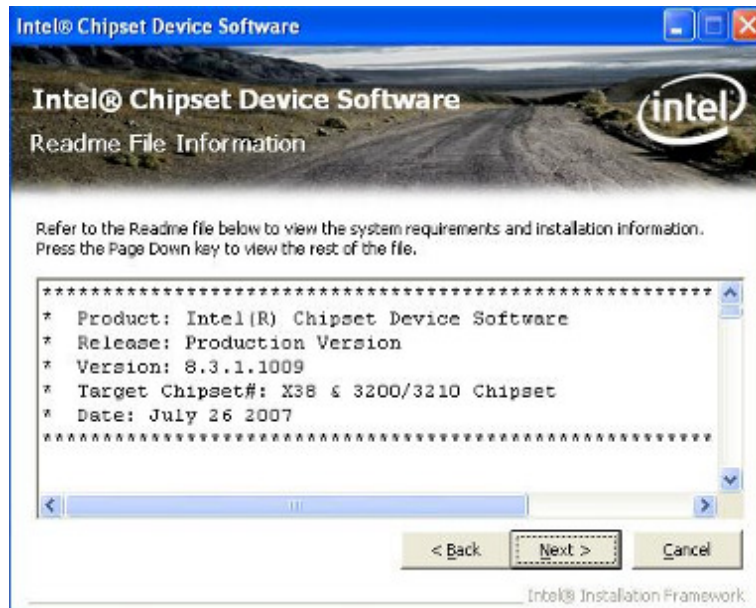
Step.3 Click on "Next" to install driver.



Step.4 Click on "Yes " to agree License



Step.5 Click on "Next" to install driver.



Step.6 Click on "Next" to install driver.



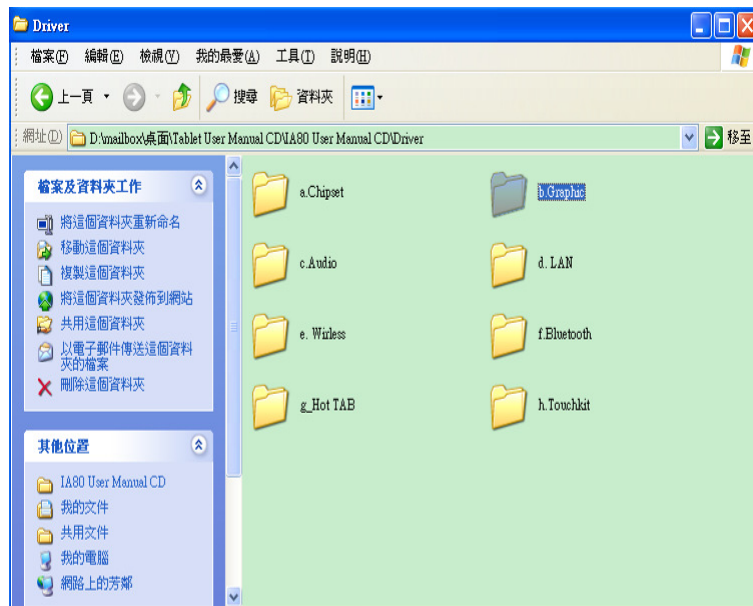
Step.7 Click on "Yes, I want to restart this computer now" to go on.



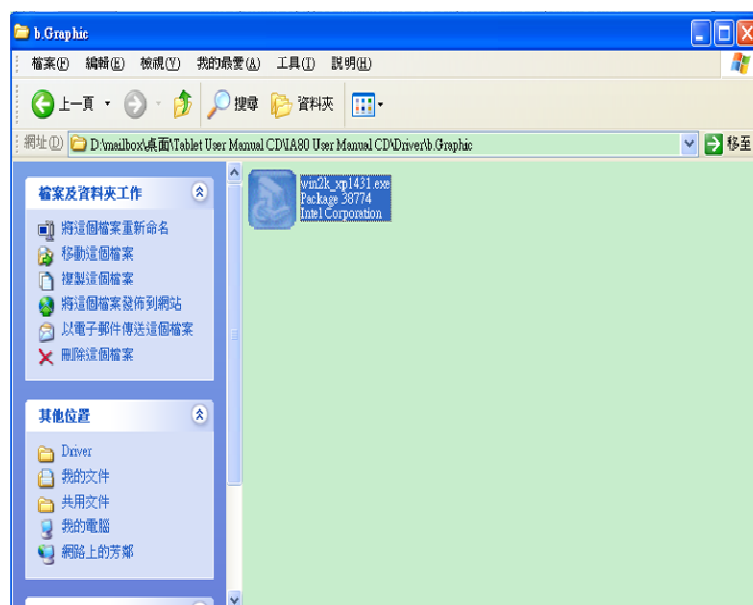
5.2 Graphic Driver Installation

The system is equipped with Intel 945 GSE Chipset + ICH7Companion Device. The Intel Graphic Drivers should be installed first, and it will enable "Video Controller (VGA compatible)". Follow the instructions below to complete the installation. You will quickly complete the installation.

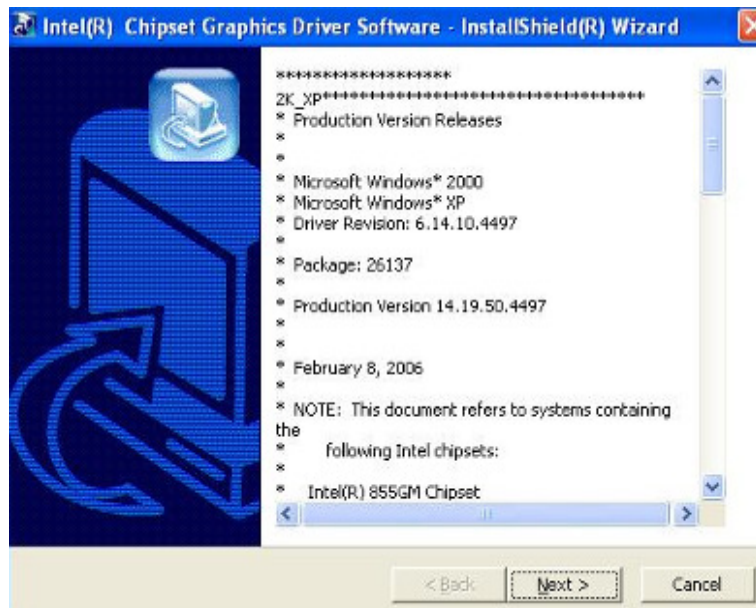
Step.1 Insert the Driver Utility CD. Open the file document "Graphic".



Step.2 Click on "Setup" to execute the setup.



Step.3 Click on "Next "to install Driver.



Step.4 Click on "Next " to install Driver.



Step.5 Click on "Yes " to agree License.



Step.6 Click on "Yes, I want to restart this computer now" to go on.

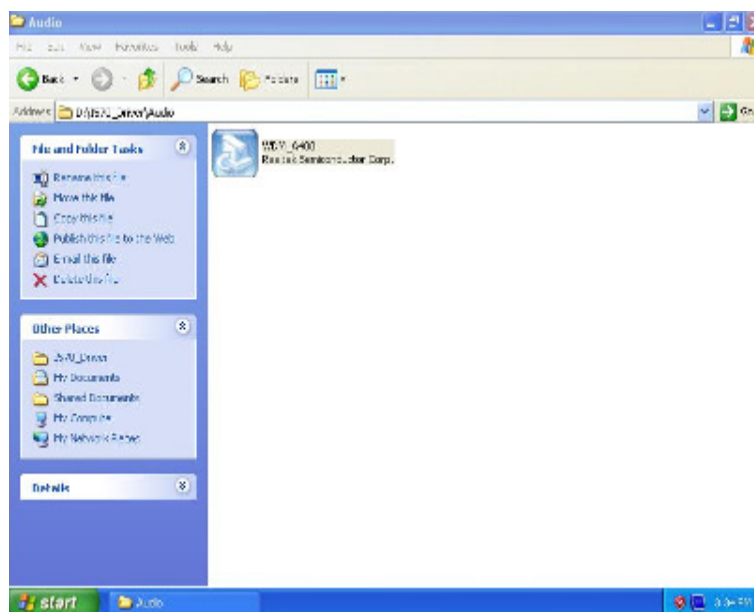


5.3 Audio Driver Installation

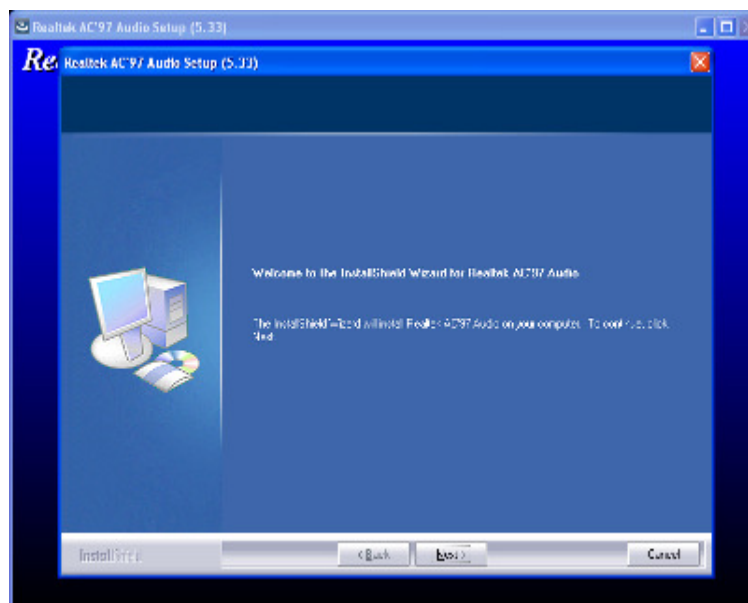
The system is equipped with the ALC655 is a 16-bit, full-duplex AC'97 Rev. 2.3 compatible six-channel audio CODEC designed for PC multimedia systems, including host/soft audio and AMR/CNR-based designs.

The ALC655 CODEC provides three pairs of stereo outputs with 5-bit volume control, a mono output, and multiple stereo and mono inputs, along with flexible mixing, gain, and mute functions to provide a complete integrated audio solution for PCs.

Step.1 Insert the Driver Utility CD . Open the file document "Audio" and click on "WDM_A400" to execute the setup.

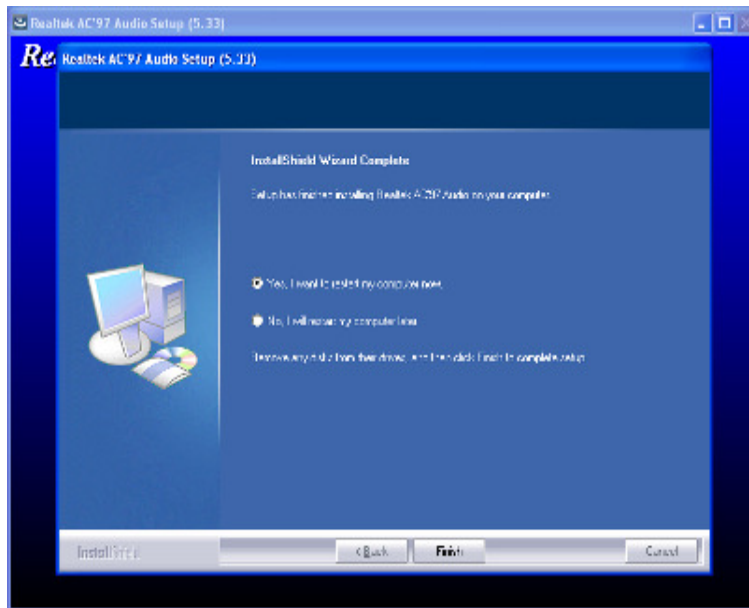


Step.2 Click on "Next" to install driver.



Rugged Computing

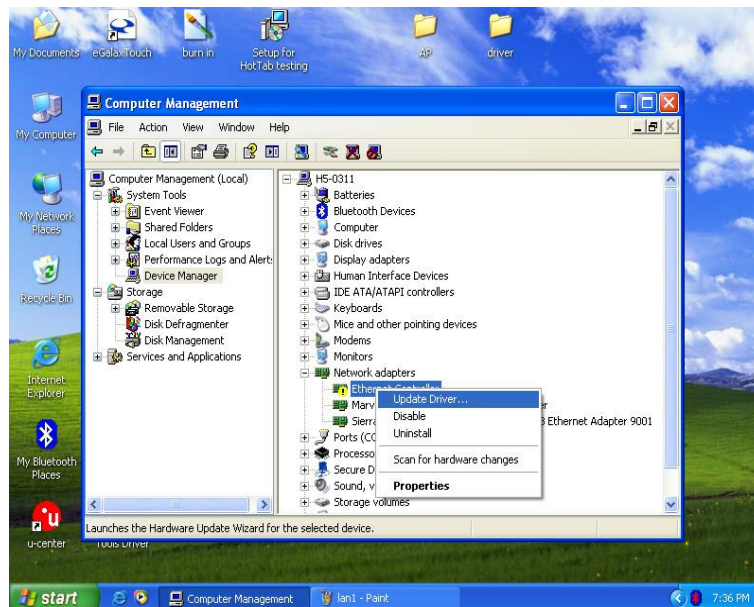
Step.3 Click on “Yes, I want to restart my computer now” to finish installation.



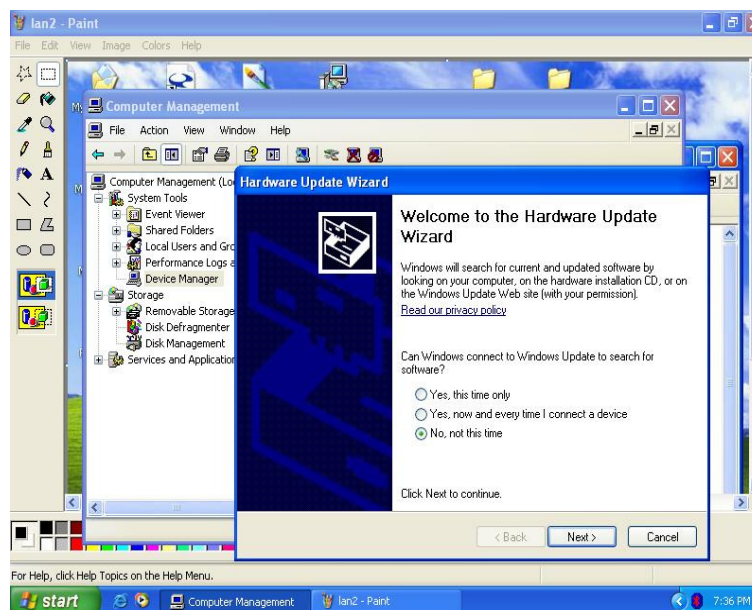
5.4 LAN Driver Installation

Follow the steps below to complete the installation of the LAN drivers. You will quickly complete the installation.

Step.1 In the Device Manager menu, select lan device, and right click select update driver

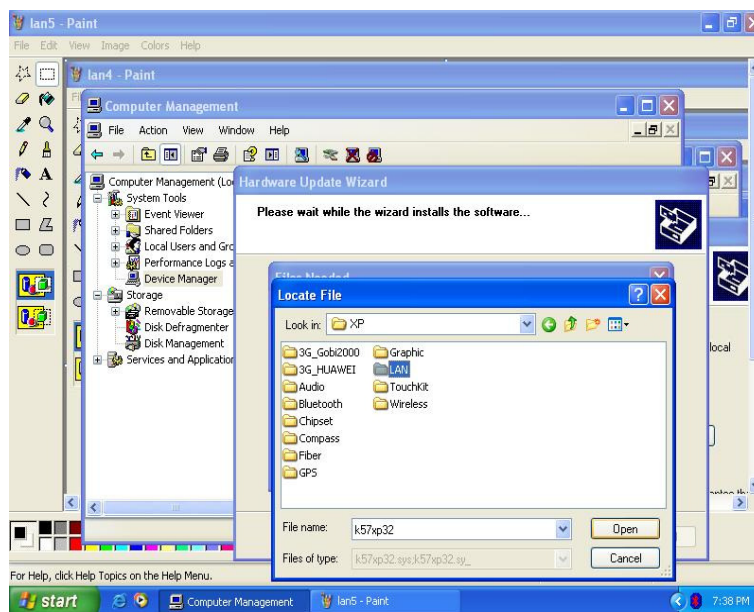
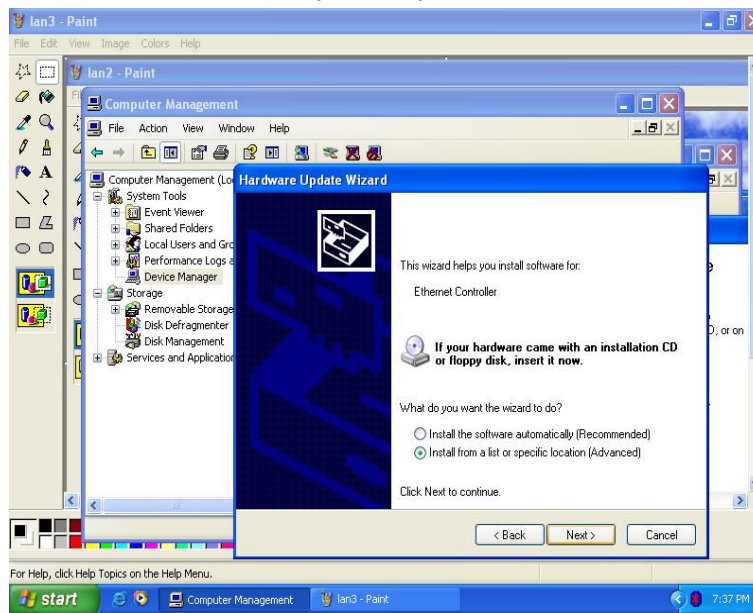


Step.2 Follow the step by step and click "Next" to finish the driver installation.



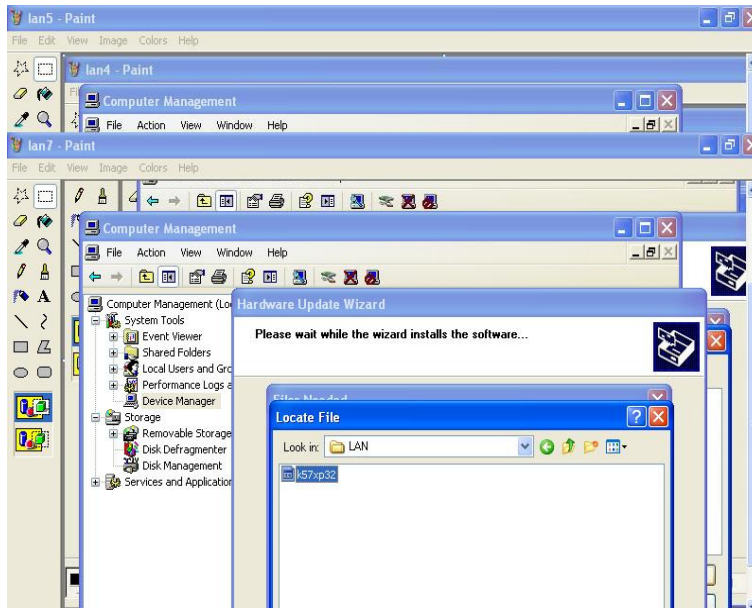
Rugged Computing

Step.3 Insert the Driver Utility CD. Open the file document "LAN".

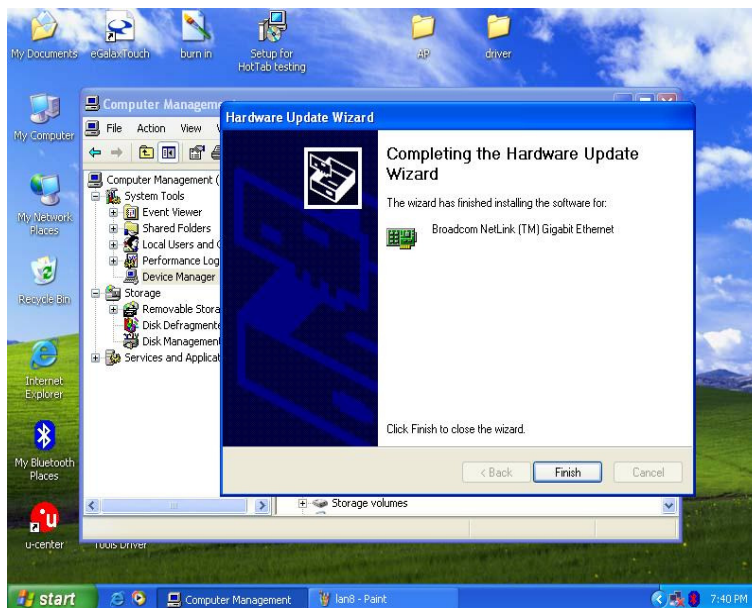


Rugged Computing

Step.4 Select the correct file in the document and click on open to execute the setup.

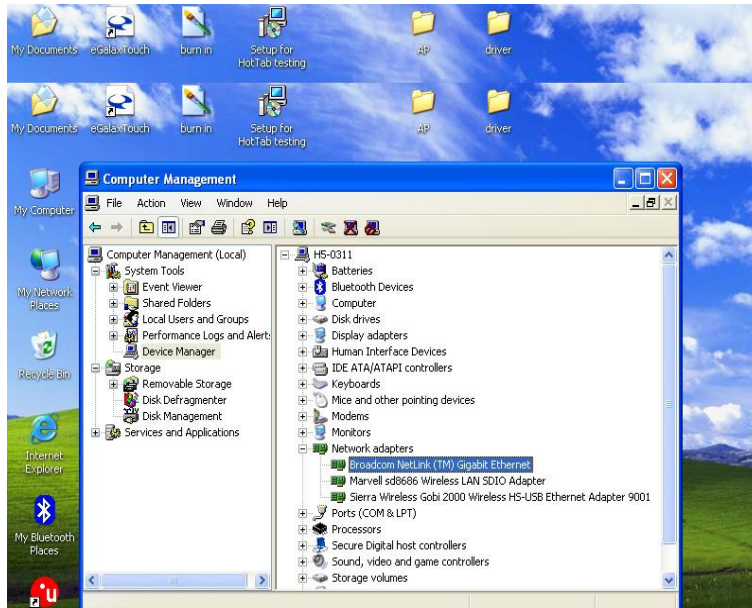


Step.5 Click on "Finish" and go on.



Rugged Computing

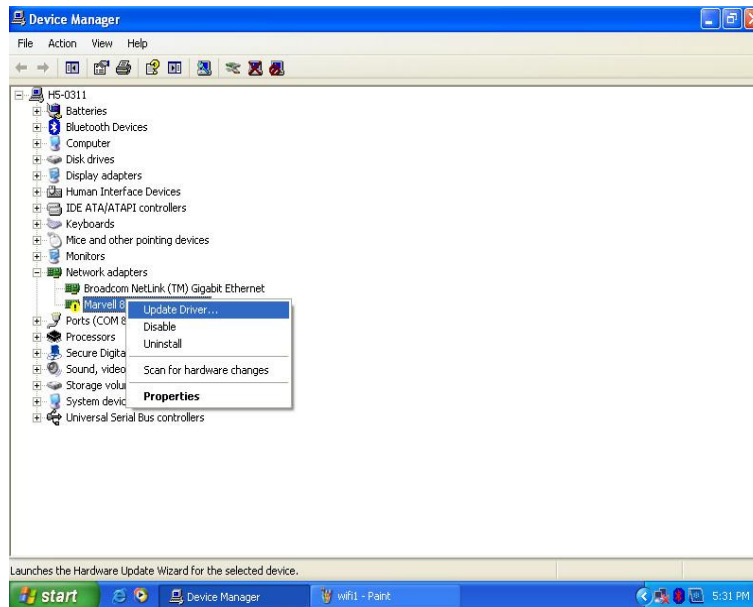
Step.6 Lan device will be correctly displayed in device manager.



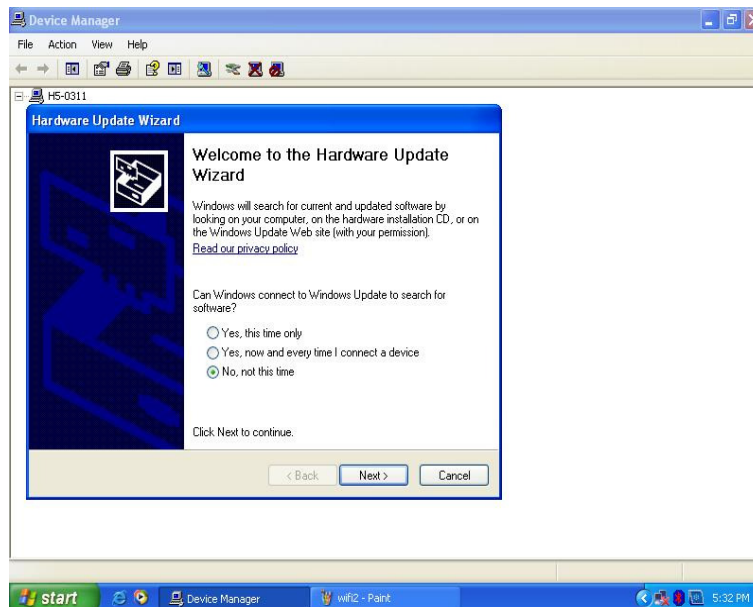
5.5 Wireless LAN Driver Installation

Following the step by step to finish the driver installation

Step.1 In the Device Manager menu, select wifi device, and right click select update driver

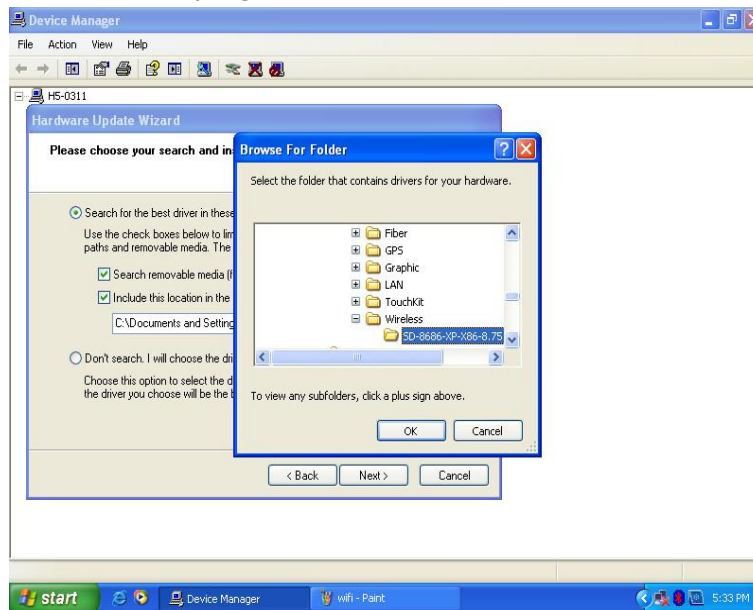


Step.2 Follow the step by step and click "Next" to finish the driver installation.

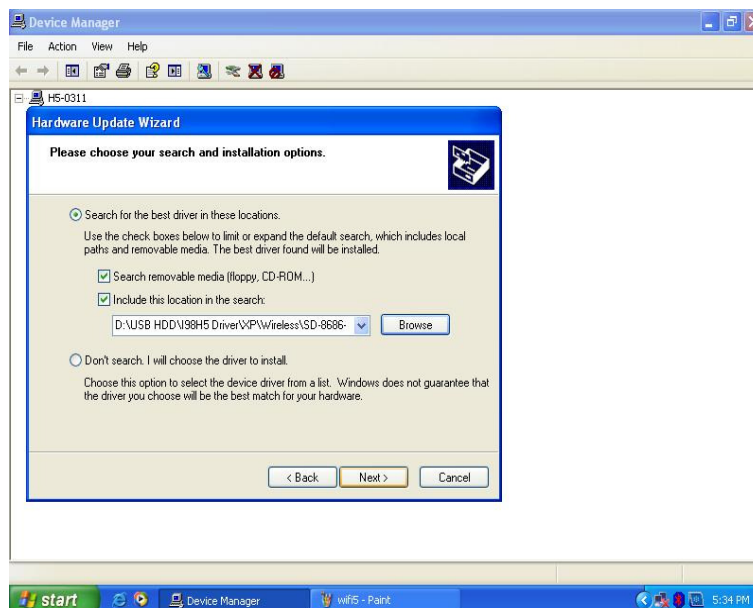


Rugged Computing

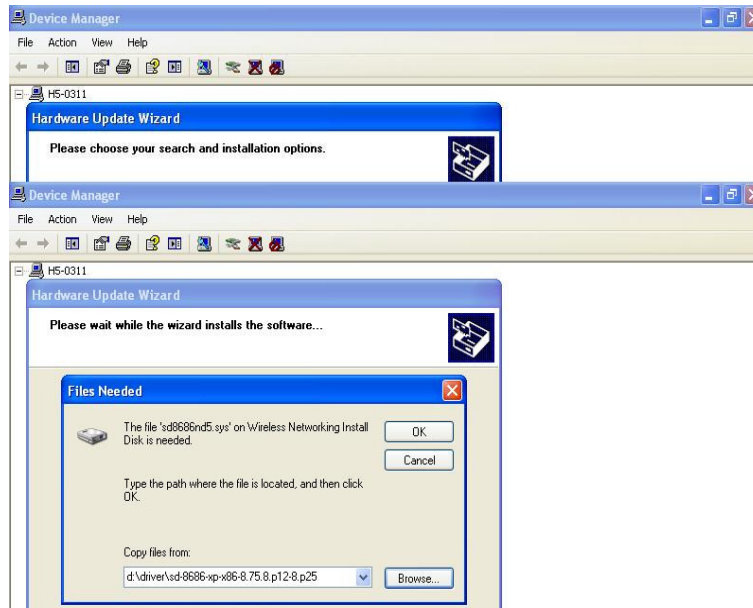
Step.3 Insert the Driver Utility CD. Open the file document “Wireless”. Execute the installation program.



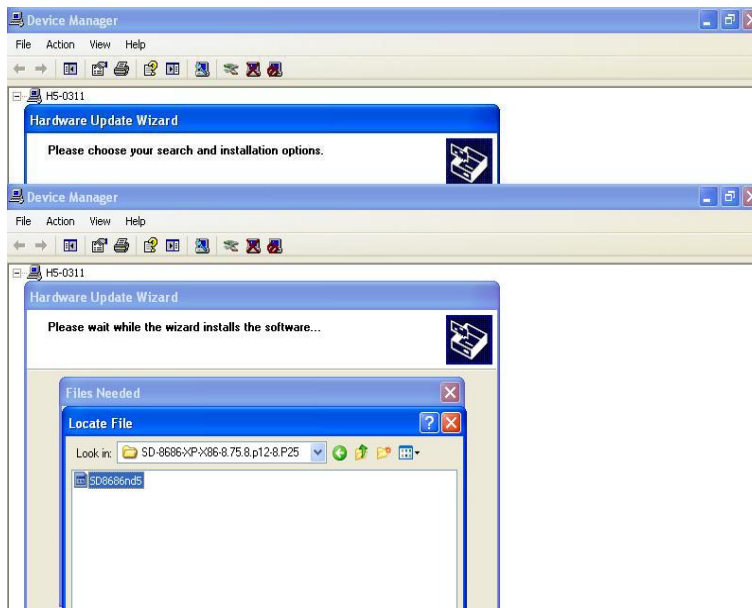
Step.4 Follow the step by step and click “Next” to finish the driver installation.



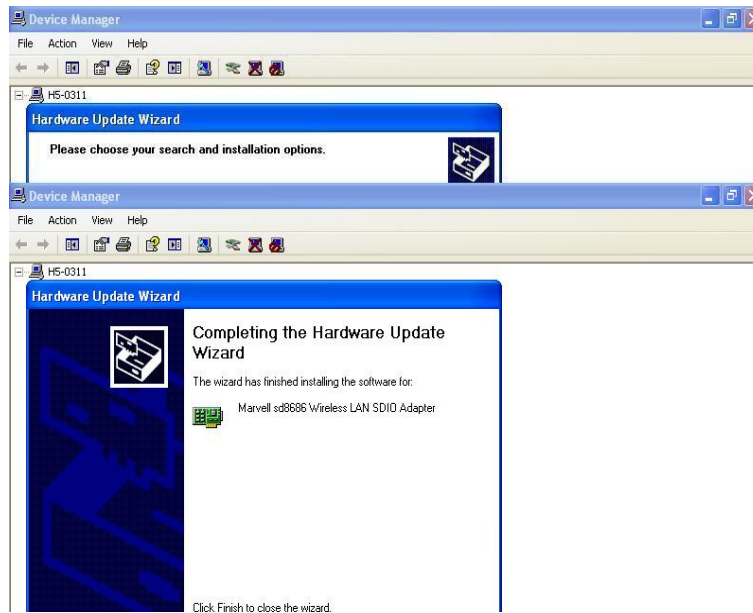
Rugged Computing



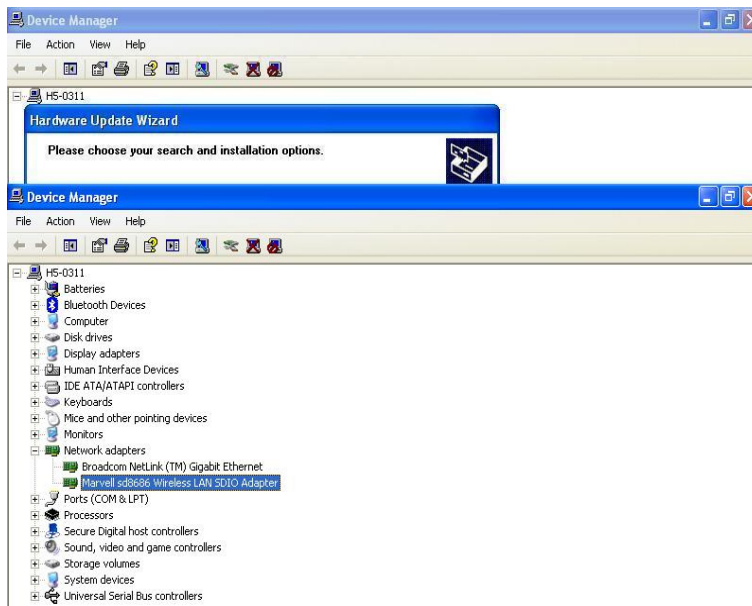
Step.5 Select the correct file in the document and click on open to execute the setup.



Rugged Computing



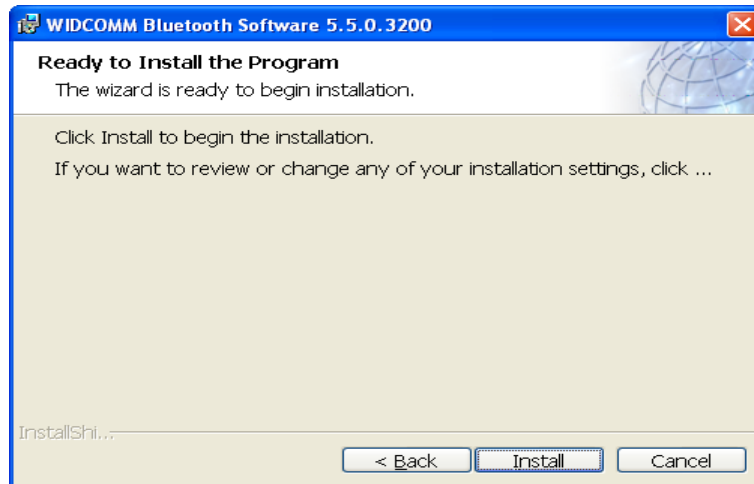
Step.6 WiFi device will be correctly displayed in device manager.



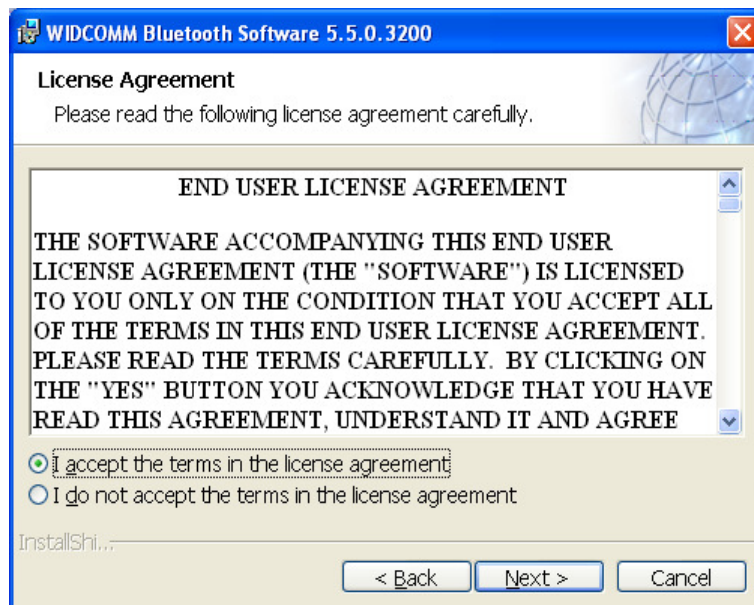
5.6 Bluetooth Driver Installations

Following the step by step to finish the driver installation

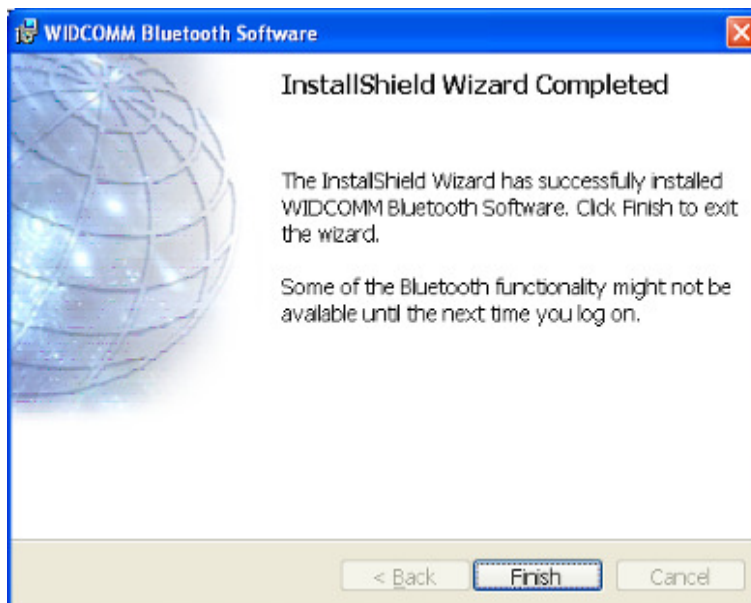
Step.1 Insert the Driver Utility CD. Open the file document "Bluetooth". Press "Install" to execute the installation program.



Step.2 Choose "Accept" icon and click "Next" to go to installation



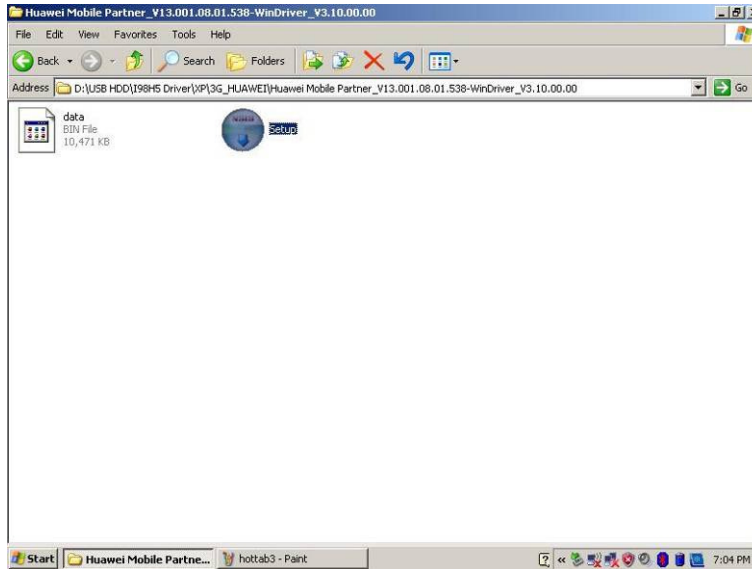
Step.3 Follow the step by step and click "Next" to finish the driver installation.



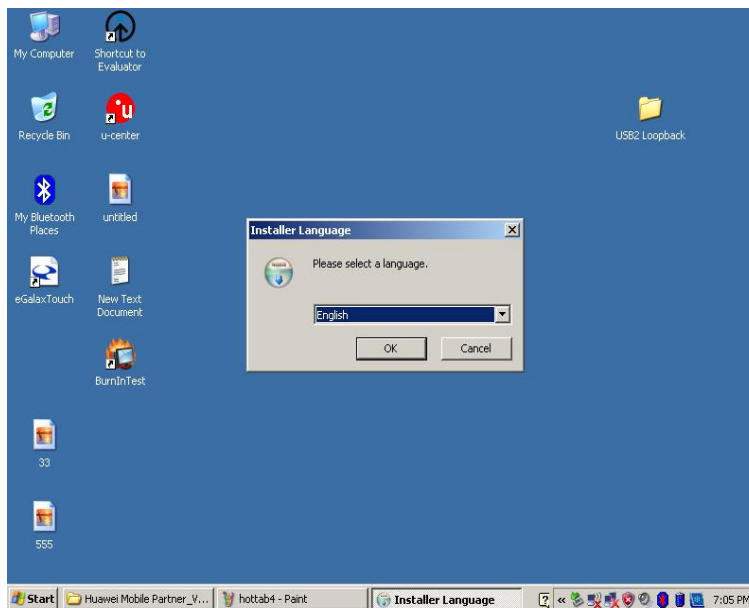
5.7 3G Module Driver Installations

Following the step by step to finish the driver installation

Step.1 Insert the Driver Utility CD. Open the file document "3G_HUAWEI". Press "Setup" to execute the installation program.

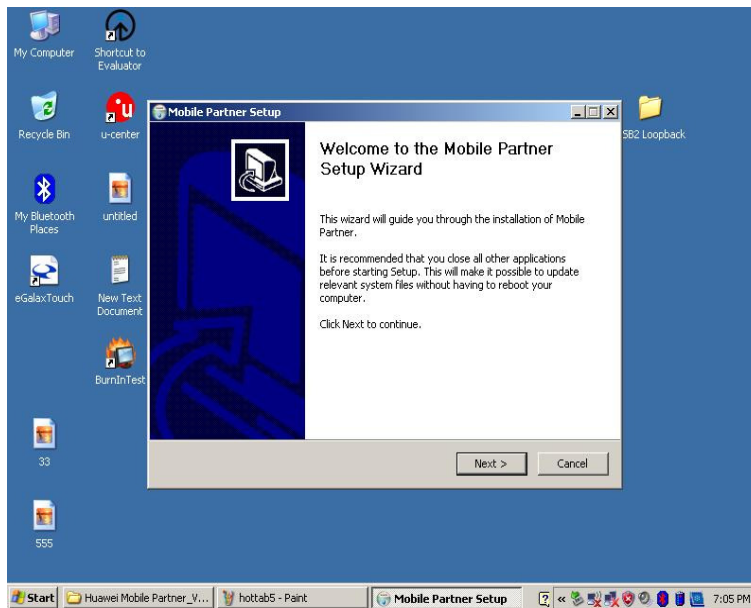


Step.2 Select the "English" and click the "ok" to next step

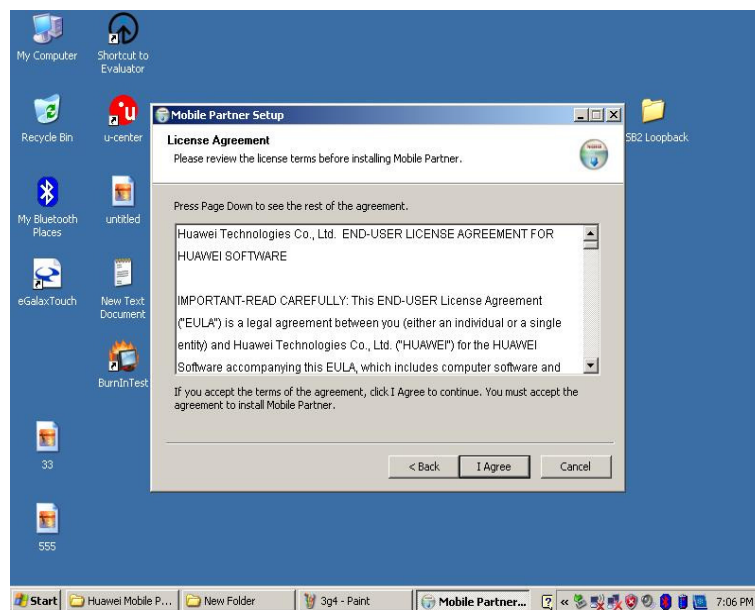


Rugged Computing

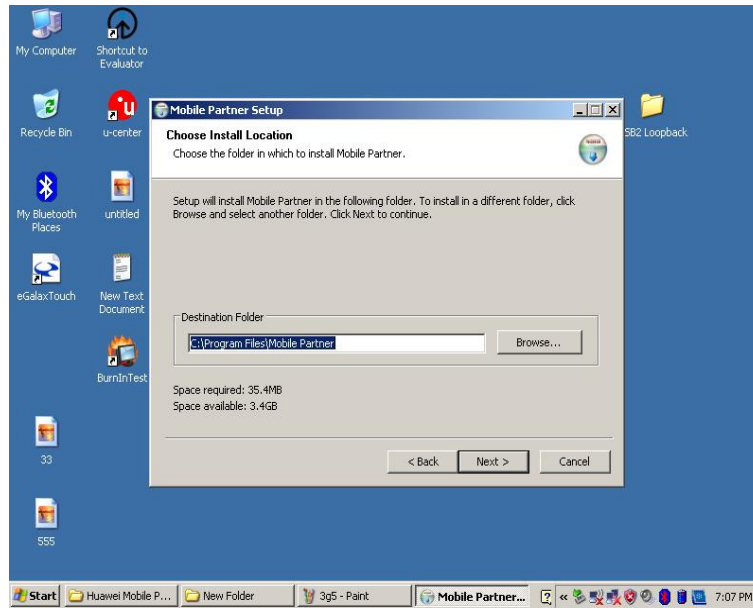
Step.3 Press "Next" to install the driver.



Step.4 Press "I Agree" to install the driver.



Rugged Computing



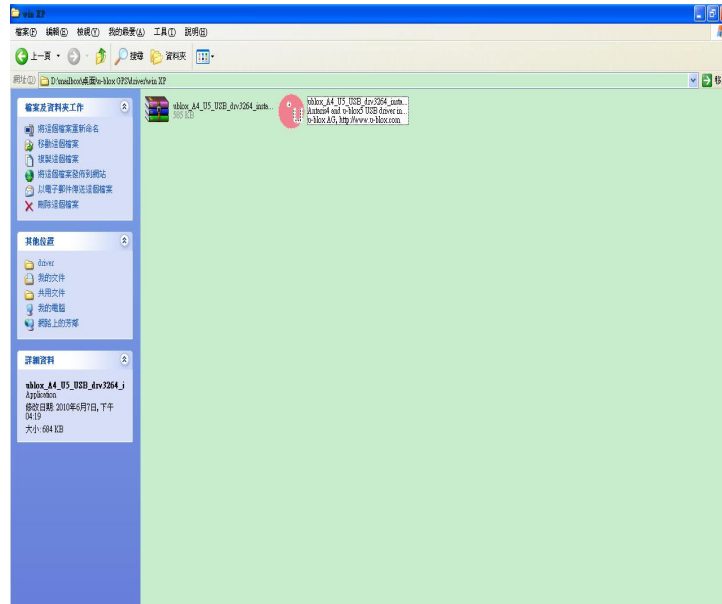
Step.5 Click "Finish" to complete the installation.



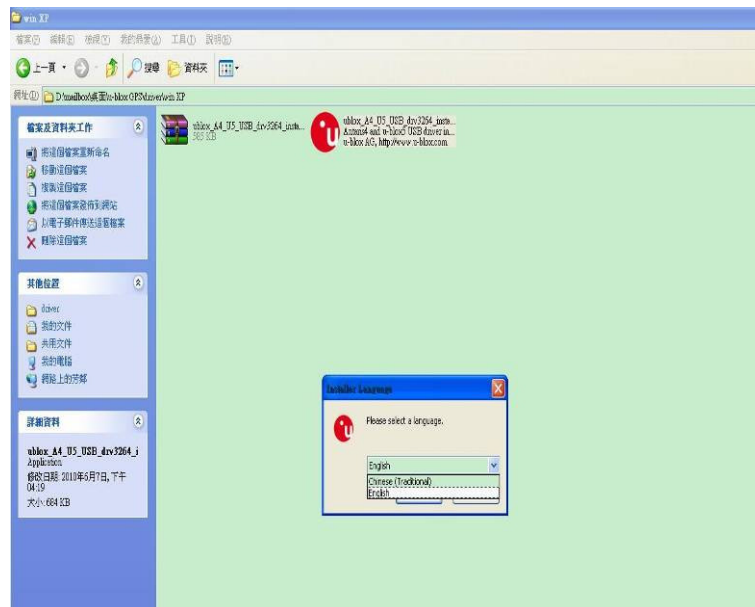
5.8 GPS Module Driver Installations

Following the step by step to finish the driver installation

Step.1 Insert the Driver Utility CD. Open the file document “GPS”. Press “ublox_A4_U5_USB_drv3264_install_UI” to execute the installation program.

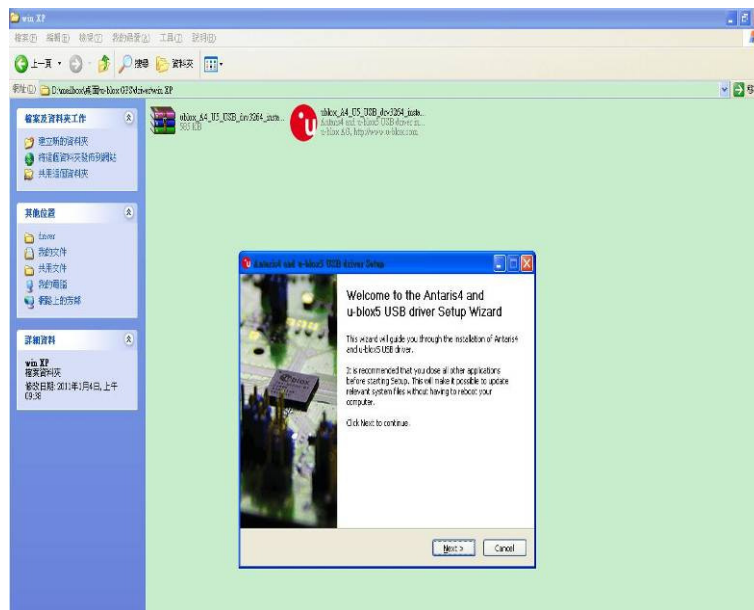


Step.2 Select the “English” and click the “ok” to next step

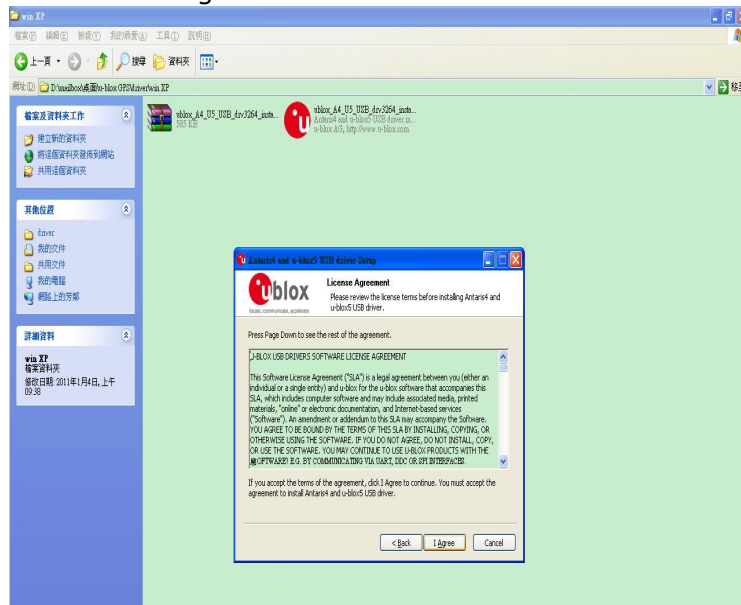


Rugged Computing

Step.3 Press "Next" to install the driver.

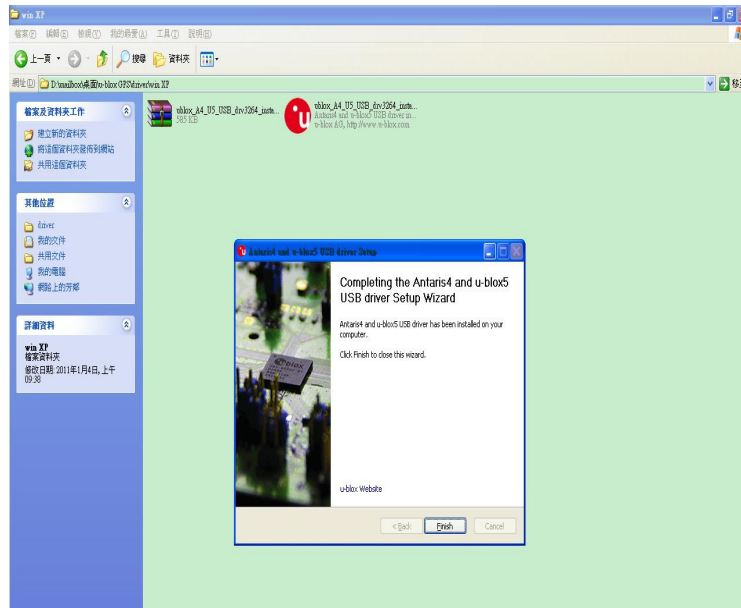


Step.4 Press "I Agree" to install the driver.



Rugged Computing

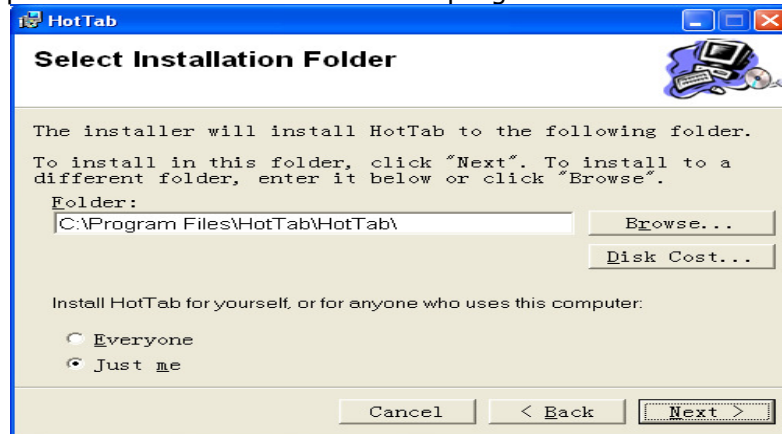
Step.5 Click “Finish” to complete the installation.



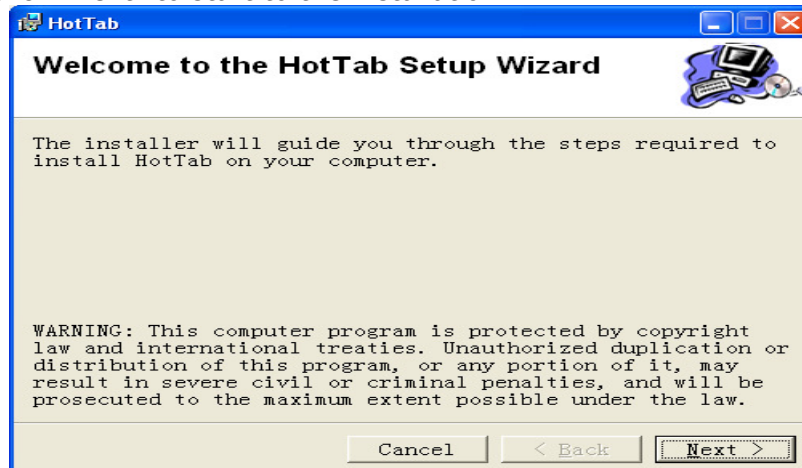
5.9 HotTab Utility Driver Installations

With our HotTab software application utility, user can very easy to control and program their usual hotkey for help their job.

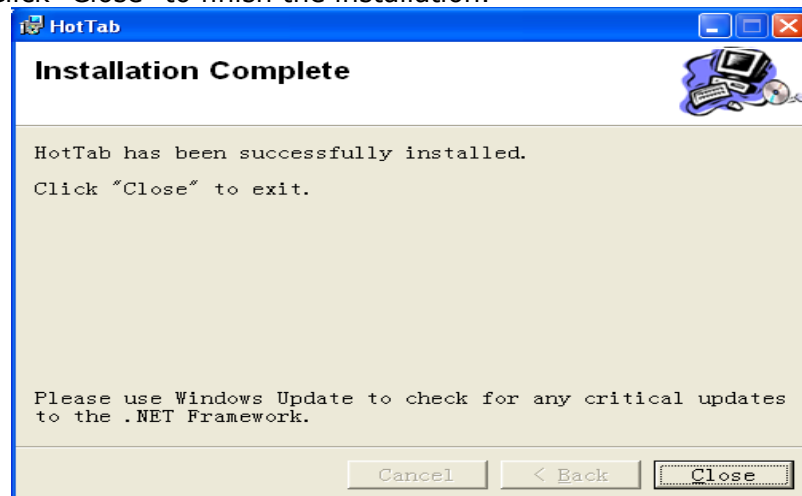
Step.1 Insert the Driver Utility CD. Open the file document "Hot TAB". Press the Setup.exe to execute the installation program.



Step.2 Click "Next" to start to the installation.



Step.3 Click "Close" to finish the installation.



Note: Microsoft .NET Framework 2.0 and WMIO Driver are necessary before HotTAB utility installation. You can download .NET Framework from the following link.

<http://www.microsoft.com/downloads/details.aspx?FamilyID=0856EACB-4362-4B0D-8EDD-AAB15C5E04F5&displaylang=en> or install it from the **Hottab folder**.

Note :

To G-Sensor and Digital compass use, please install HotTab_CG_v*_001.msi.**

To W05I98H-RTT1 use, please install HotTab_H056_v_001.msi.**

To standard R05I98H-RTD1 use, please install HotTab_H5_v2_001.msi.**

5.10 Touch Driver Installation

TouchKit is the Premier Touch software, which contains drivers of the touch panel controllers for the specified communication connectors, RS232, PS/2 and USB, and the other two utilities.

The two utilities are as follows:

- Touch Tray support

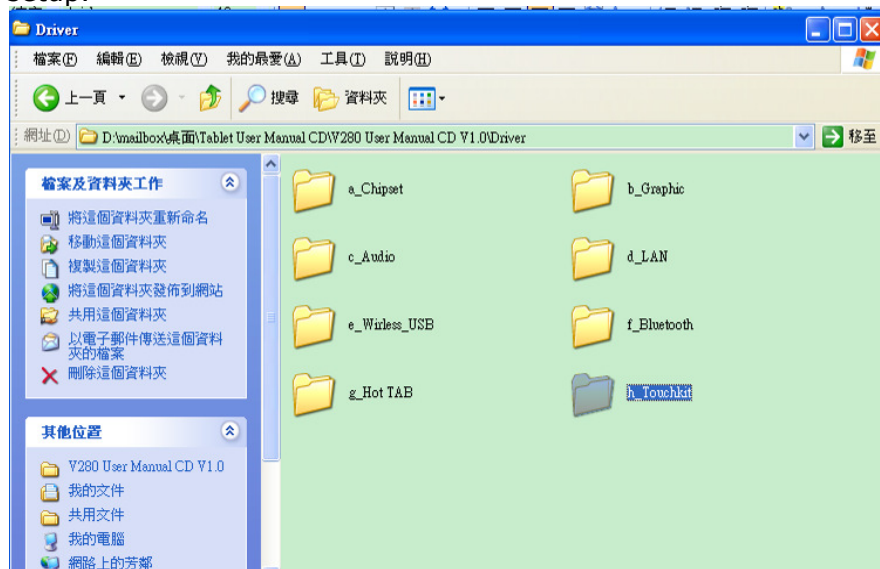
This is utility for emulating the right and left button of mouse through controlling touch panel. Users can toggle between right or left mouse buttons by this utility.

- Configuration support

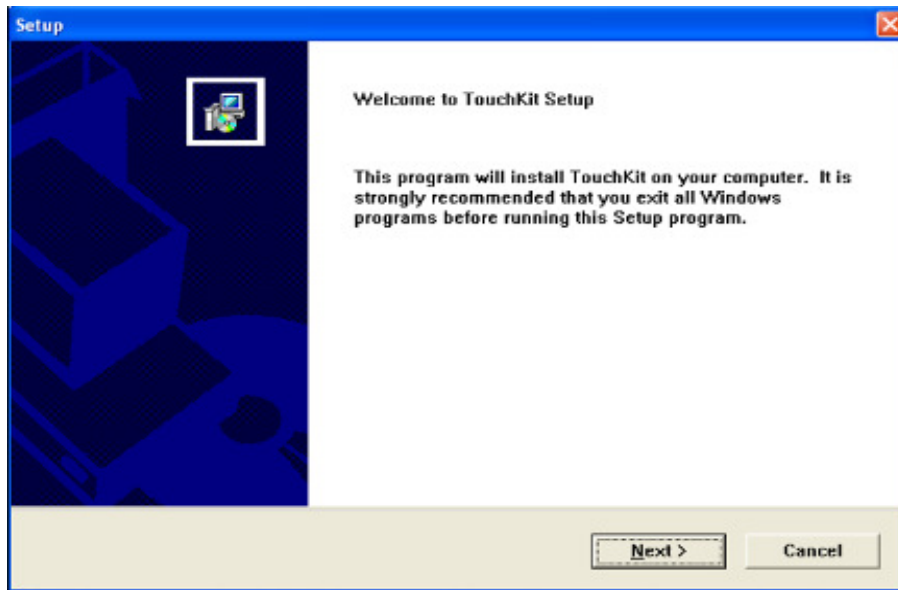
The calibration and draw test of touch panel are done by this utility. Besides, users can add or remove for new RS-232 or PS/2 touch panel devices.

Follow these steps to install TouchKit.

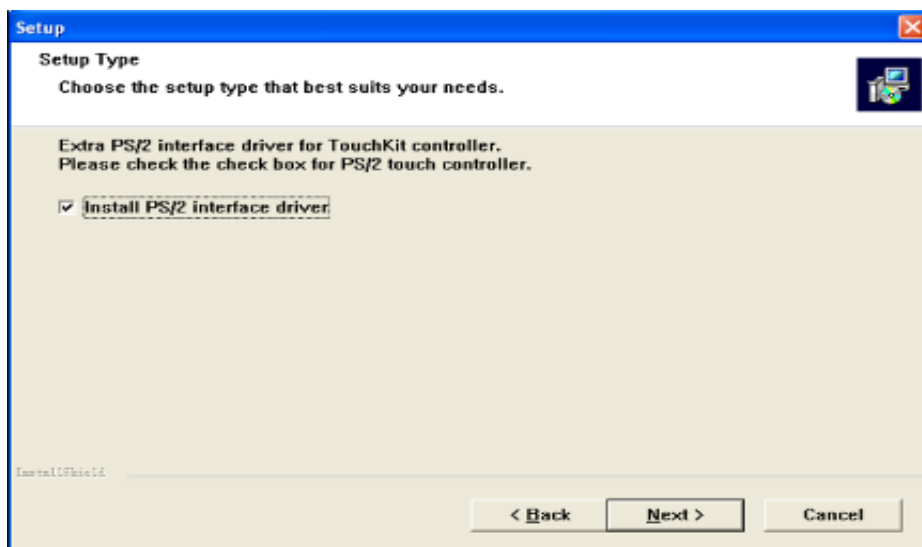
Step.1 Insert the Driver Utility CD. Open the file document "TouchKit" to execute the setup.



Step.2 Click on "Setup.exe" to execute the setup.

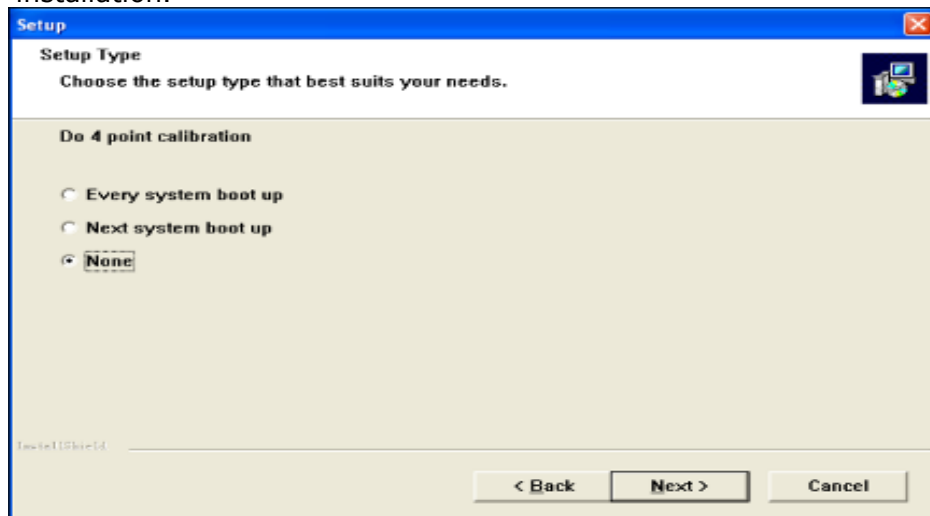


Choose Install PS/2 interface driver and select "Next" to go on.

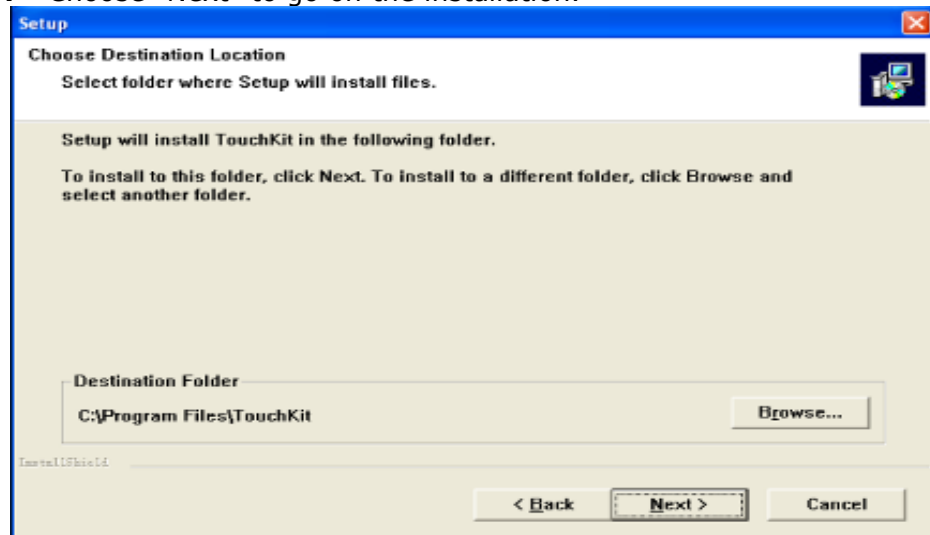


Rugged Computing

Step.3 Choose "No" for 4 point calibration and click "Next" to continue installation.

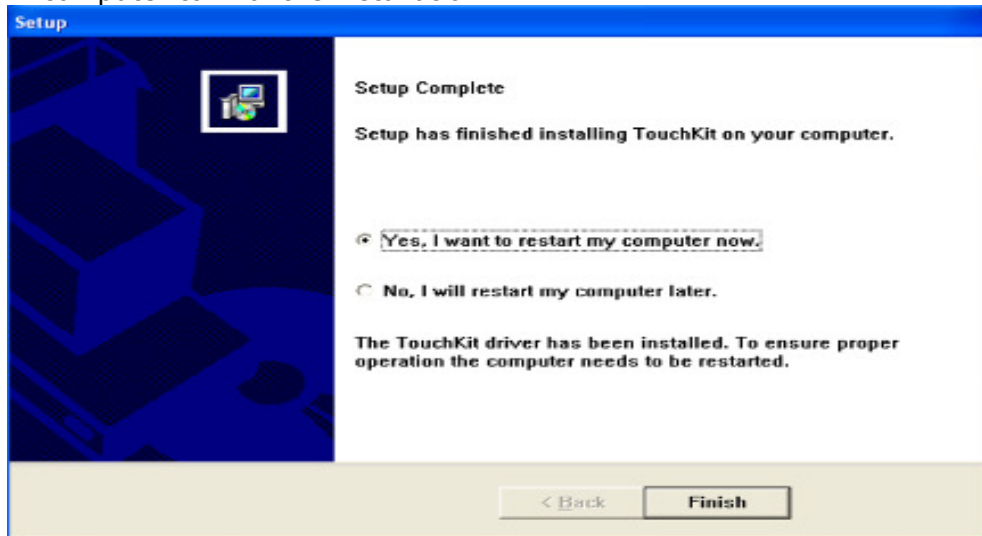


Step.4 Choose "Next" to go on the installation.



Rugged Computing

Step.5 After few seconds of installation, click on "Finish" and choose restart computer to final the installation.



Note: Configuration Utility

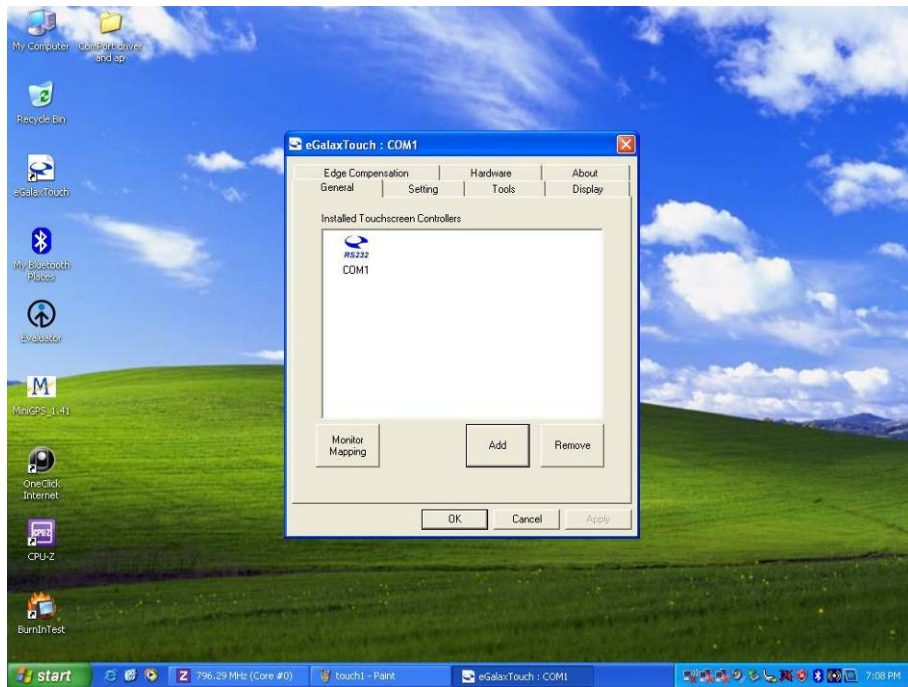
After finishing the installation, please follow the steps to test the **configuration utility**.

Step.1 Click the "TouchKit" shortcut function in the desktop.

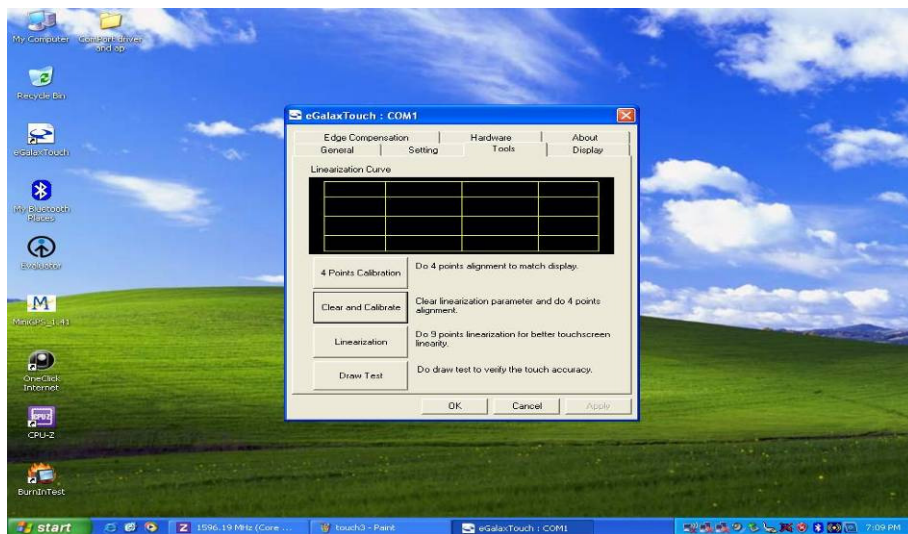


Rugged Computing

Step.2 To make sure the touch controller is in the com1.



Step.3 Correct 4 point locations on screen with the Panel. Screen display as follows



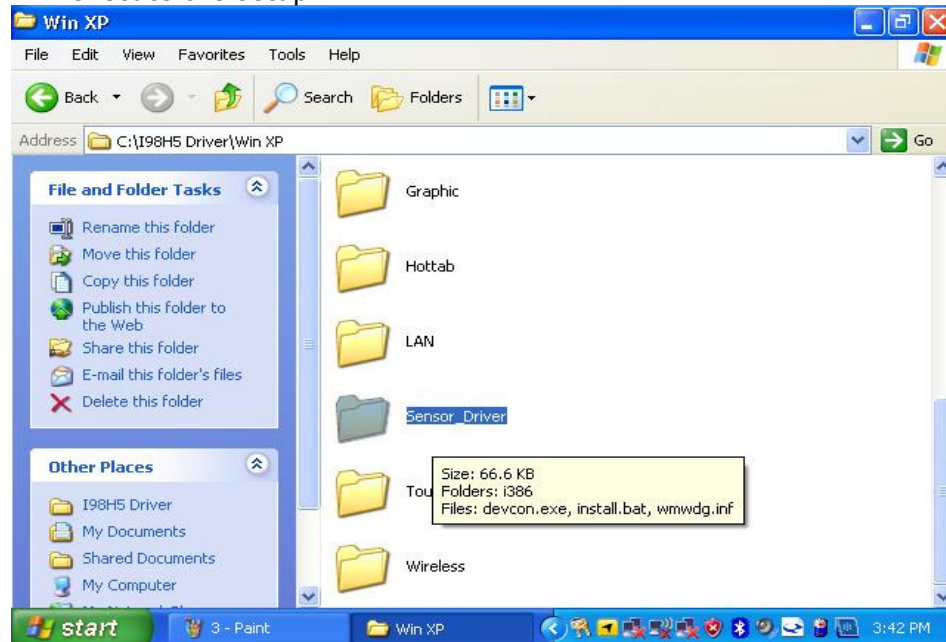


Step.4 If 4 point's calibration tests are fine, push "yes" to finish the test.

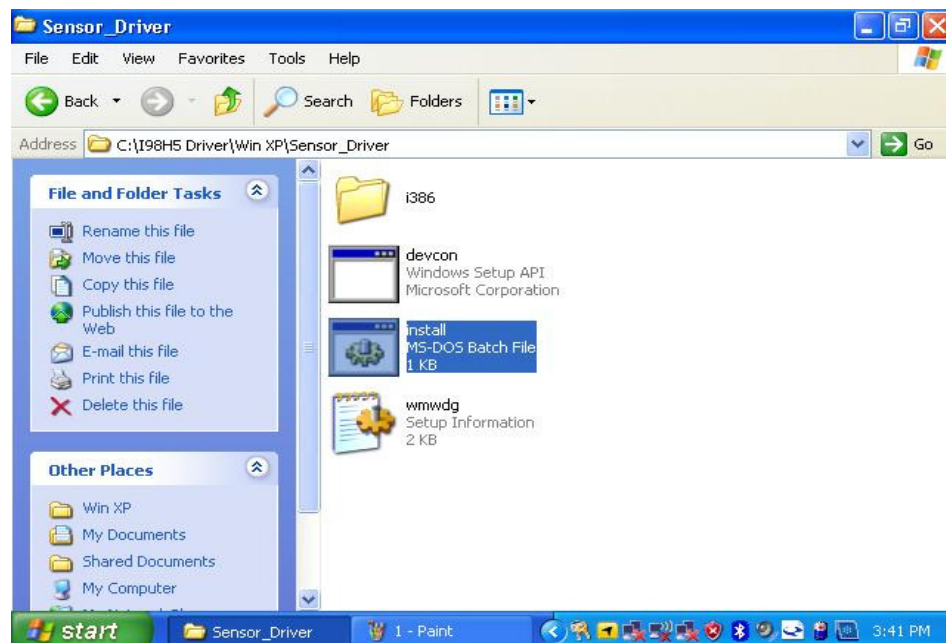
5.11 Sensor Installation

Follow the steps below to complete the installation the G-sensor and compass. You will quickly complete the installation.

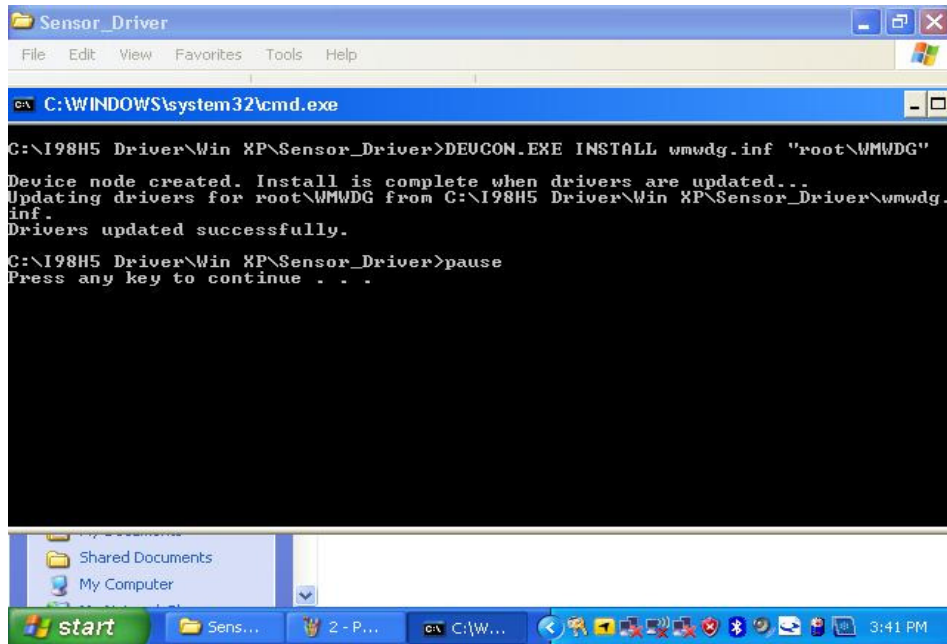
Step.1 Insert the Driver Utility CD. Open the file document "Sensor_Driver" to execute the setup.



Step.2 Click "install.bat" to start to the installation.



Rugged Computing



CHAPTER 6

Caring Your Tablet PC



CHAPTER 6 CARING YOUR TABLET PC

There are few tips for location, cleaning guideline, and for take care of battery pack and touch-screen. Please follow these tips for safeguarding the integrity of your tablet PC data as well as the tablet PC itself.

6.1 General Protection Tips for Tablet PC

Please check the general protection tips for Tablet PC location and normal operating.

- Please do not put heavy objects on top of the tablet PC as this may damage the display.
- Do not use paper towels to clean the display but use the included soft cloth. Avoid touching it with your fingers, pen, or pencil.
- Allowing the backlight to automatically turn off as a result of power management is recommended rather than using a screen saver or other software that prevents the power management from working.
- 10 °C (50 °F) and 35 °C (95 °F) is our recommended temperature for operating the tablet pc– actual operating temperature depending on product specifications.
- Avoid placing the tablet PC in a high humidity, highly change temperatures, mechanical vibration, direct sunlight, or heavy dust environment.
- Keeping the tablet PC at least 15 cm (5 inches) away from electrical appliances that can generate a strong magnetic field such as a TV, refrigerator, motor, or a large audio speaker.
- Avoid moving the tablet PC from a cold to a warm place in sudden time. A temperature difference of more than 10 °C (18 °F) may cause condensation inside the unit, which may damage the storage media.
- Please do not place the tablet PC on an unsteady surface.

6.2 Cleaning the Tablet PC

- Make sure the tablet pc is turned off.
- Never spray or pour any liquid directly onto the screen or case.
- Wipe the screen with a clean, soft, lint-free cloth. This removes dust and other particles.
- The display area is highly prone to scratching. Do not use ketene

type material (ex. Acetone), Ethyl alcohol, toluene, ethyl acid or Methyl chloride to clear the panel. It might permanently damage the panel.

- If still not clean, apply a small amount of non-ammonia, non-alcohol based glass cleaner onto a clean, soft, lint-free cloth, and wipe the screen

6.3 Battery Protection Tips

- It is recommended temperature range for charging the battery pack between 5 deg C ~ 35 deg C.
- To avoid harm to the battery, recharge the battery pack when it is nearly discharged. When recharging, make sure that the battery pack is fully charged.
- The battery pack is a consumable product and the following conditions will shorten its life:
 - ◆ Frequently charging the battery pack
 - ◆ When using, charging, or storing the battery in high temperature condition
- To avoid hastening the deterioration of the battery pack thereby prolonging its useful life, minimize the number of times you charge it so as not to frequently increase its internal temperature.
- A higher environment temperature will cause the battery pack's temperature to rise. Avoid charging the battery pack inside a closed vehicle and in hot weather condition. Also, charging will not start if the battery pack is not within the allowed temperature range.
- It is recommended that you do not charge the battery pack more than once a day.
- Charging the battery pack with the system's power off is recommended.
- To maintain the battery pack's operating efficiency, store it in a cool dark place removed from the tablet PC and with 30 % ~ 40 % charge remaining.
- Avoid installing or removing the battery pack when the tablet PC is in Standby mode.
- Charging time will be prolonged when the tablet PC is turned on.

6.4 Touch screen Protection Tips

- Avoid using excessive force to the display, when use the finger or the included touch screen stylus pen on the display, **the recommended force can not over 200gf.**
- Besides the included stylus, using a sharp or metallic object may cause scratches and damage the display, thereby causing errors.
- Wipe the touch screen with a clean, soft, lint-free cloth.
- Using the touch screen during low temperature (less than 5°C) may cause a slower response time, this is normal. A normal response time may be restored upon returning to room temperature.
- When there is noticeable discrepancy in the operation of the touch screen function (wrong location on intended operation or improper display resolution), refer to the Windows operating system for instructions on recalibrating the touch screen display.

6.5 Trouble shooting from A to L

A. Battery Problem

Condition	Check Point
The battery does not charge (Battery Charge indicator does not light orange).	<ul style="list-style-type: none"> ● Make sure that the AC adapter is properly connected. ● Make sure that the battery is not too hot or cold. Allow time for the battery pack to return to room temperature. ● Make sure that the battery pack is installed correctly. ● Make sure that the battery terminals are clean.

B. Bluetooth Transmission Problem

Condition	Check Point
I cannot connect to another device with Bluetooth wireless technology.	<ul style="list-style-type: none"> ● Make sure that both devices have activated Bluetooth feature. ● Make sure that the distance between the two devices are not over 10 meters or that there are no walls or other obstructions between the devices. ● Make sure that the other device is not in "Hidden" mode. ● Make sure that both devices are compatible.

C. Display Problem

Condition	Check Point
Nothing appears on the screen.	<ul style="list-style-type: none"> ● During operation, the screen may automatically turn off as a result of power management. Press any key to see if the screen comes back. ● The brightness level might be too low. Increase brightness by pressing the button.

D. Date/Time Problems

Condition	Check Point
The date/time is incorrect.	<p>Correct the date and time via the operating system or BIOS Setup program.</p> <p>After you have performed everything as described above and still have the incorrect date and time every time you turn on the tablet PC, the RTC (Real-Time Clock) battery is at the end of its life. Call an authorized dealer to replace the RTC battery.</p>

E. Hardware Driver Problem

Condition	Check Point
The tablet PC does not recognize a newly installed device.	<ul style="list-style-type: none">● The device may not be correctly configured in the BIOS Setup program. Run the BIOS Setup program to identify the new type.● Make sure if any device driver needs to be installed. (Refer to the documentation that came with the device.)● Make sure if the device needs any jumper or switch settings. (Refer to the documentation that came with the device.)● Check the cables or power cords for correct connections.● For an external device that has its own power switch, make sure that the power is turned on.

F. Hard Drive Problem

Condition	Check Point
The hard disk drive error message appears on the screen.	<ul style="list-style-type: none">● The hard disk drive has defects. Ask your dealer for help.
The hard disk drive operations seem slow.	<ul style="list-style-type: none">● The data files stored on the hard disk drive may be fragmented. Use a tool such as Window's Disk Defragmenter to defragment the files.

Rugged Computing

G. LAN Problem

Condition	Check Point
I cannot access the network.	<ul style="list-style-type: none">● Make sure that the LAN cable is properly connected to the RJ-45 connector and the network hub.● Make sure that the network configuration is appropriate.● Make sure that the user name or password is correct.

H. Power Management Problems

Condition	Check Point
The tablet PC does not enter Standby or Hibernation mode automatically.	<ul style="list-style-type: none">● If you have a connection to another computer, the tablet PC does not enter Standby or Hibernation mode if the connection is actively in use.● Make sure that the Standby or Hibernation time-out is enabled.
The tablet PC does not enter Standby or Hibernation mode immediately.	<ul style="list-style-type: none">● If the tablet PC is performing an operation, it normally waits for the operation to finish.
The tablet PC does not resume from Standby or Hibernation mode.	<ul style="list-style-type: none">● The tablet PC automatically enters Standby or Hibernation mode when the battery pack is empty.● Do any one of the following:<ul style="list-style-type: none">- Connect the AC adapter to the tablet PC.- Replace the empty battery pack with a fully charged one.

I. Startup Problems

Condition	Check Point
When you turn on the tablet PC, it does not respond and the Power indicator does not light green.	<ul style="list-style-type: none">● If you are using an external AC power, make sure that the AC adapter is correctly and securely connected. If so, make sure that the electrical outlet works properly.● If you are using the battery power, make sure that the battery is not discharged.● When the tablet PC is connected to AC power and hard disk drive temperature is below 5 oC, the optional heater would turn on as indicated by

Rugged Computing

	the hard disk drive / heater indicator glowing in red (if the item HDD Preheat under the Advanced menu of your BIOS Setup is set at Enabled). Wait awhile.
When you turn on the tablet PC, it stops after POST.	<ul style="list-style-type: none">● Restart your tablet PC.

J. Software Problems

Condition	Check Point
An application program does not work correctly.	<ul style="list-style-type: none">● Make sure that the software is correctly installed.● If an error message appears on the screen, consult the software program's documentation for further information.● If you are sure the operation has stop, reset the tablet PC.

K. Sound Problems

Condition	Check Point
No sound is produced.	<ul style="list-style-type: none">● Make sure that the volume control is not set too low. Increase volume by pressing the button.● Make sure that the tablet PC is not in Standby mode.● If using an external speaker, make sure that the speaker is properly connected.
Distorted sound is produced.	<ul style="list-style-type: none">● Make sure that the volume control is not set too high or too low. In most cases, a high setting can cause the audio electronics to distort the sound.
The external audio device does not work.	<ul style="list-style-type: none">● Make sure that your tablet PC is equipped with the driver needed.● Click the speaker symbol on the taskbar and check the Windows volume control.● Check the volume control of your tablet PC.

L. Wireless LAN Problem

Condition	Check Point
I cannot use the wireless LAN feature.	<ul style="list-style-type: none"> ● Make sure that the wireless LAN feature is turned on.
Transmission quality is poor.	<ul style="list-style-type: none"> ● Your tablet PC may be in an out-of-range situation. Move your tablet PC closer to the Access Point or another wireless LAN device it is associated with. ● Check if there is high interference around the environment and solve the problem as described next.
Radio interference exists.	<ul style="list-style-type: none"> ● Move your tablet PC away from the device causing the radio interference such as microwave oven and large metal objects. ● Plug your tablet PC into an outlet on a different branch circuit from that used by the affecting device. ● Consult your dealer or an experienced radio technician for help.
I cannot connect to another wireless LAN device.	<ul style="list-style-type: none"> ● Make sure that the wireless LAN feature is turned on. ● Make sure that the SSID setting is the same for every wireless LAN device in the network. ● Your tablet PC is not recognizing changes. Restart the tablet PC. ● Make sure that the IP address or subnet mask setting is correct.
I cannot communicate with the computer in the network when Infrastructure mode is configured.	<ul style="list-style-type: none"> ● Make sure that the Access Point your tablet PC is associated with is powered on and all the LEDs are working properly. ● If the operating radio channel is in poor quality, change the Access Point and all the wireless station(s) within the BSSID to another radio channel. ● Your tablet PC may be in an out-of-range situation. Move your tablet PC closer to the Access Point it is associated with. ● Make sure that your tablet PC is configured with the same security option (encryption) to the Access Point. ● Use the Web Manager/Telnet of the Access Point to check whether it is connected to the network. ● Reconfigure and reset the Access Point.

Rugged Computing

I cannot access the network.

- Make sure that the network configuration is appropriate.
- Make sure that the user name or password is correct.
- You have moved out of range of the network.
- Turn off power management.