

Introduction



Thank you for purchasing the mini-v S41.

Weighing 1.25 kg (with 3 cell battery) and small enough to fit in a school bag, handbag or briefcase, the mini-v is the world's most practical mini notebook computer designed to offer everything that a notebook can.

The mini-v has the benefit of having an easy to use Qwerty keyboard, with real keys and full notebook functionality. The mini-v combines your conventional notebook, desktop, PDA, MP3 and MP4 Player, whilst being not much bigger than a paperback book.

Your mini-v mini-notebook offers great performance in a stylish silver and black light-weight design. With its stunning 7-inch WSVGA touch screen display and slim -line DVD/RW Optical Drive this mini-notebook offers you the best on-screen performance, enabling you to operate full Microsoft Office™ applications, watch films or view pictures of your last holiday. All this with the freedom to choose from keyboard, mouse, touch pad, joystick, touch screen and stylus.

The mini-v comes pre-loaded with Microsoft Vista™ and can act as a Phone, Notebook, MP3 Player and PMP (Portable Movie Player) as it has been fully tested with iTunes™, DivX, Skype™ and comes with CF (Compact Flash) compatibility to support a 3G data/voice card.

Using Intel® McCaslin technology and configurations that will include Intel® Stealey processors, the mini-v is a compact notebook computer that's capable of acting as your office PC. With an integrated VGA port, 10/100 LAN and USB 2.0 interfaces, you can connect all your desktop peripherals and multimedia devices to the mini-v. With integrated Wireless LAN and built-in Bluetooth® you can also take advantage of wireless networks and hot spots whilst out and about.

The mini-v is a stylish and elegant ultra-portable notebook that can handle all your work and entertainment needs.

Macrovision's Copy Protection Technology

This product incorporates copy protection technology that is protected by U.S. and foreign patents, including patent numbers 5,315,448 and 6,836,549, and other intellectual property rights. The use of Macrovision's copy protection technology in the product must be authorized by Macrovision. Reverse engineering or disassembly is prohibited.

1. Before you start

www.vyepc.pl

How to get help

When you have any problems using your Vye Notebook, in addition to referring to this manual or on-line-help screens on your notebook, you can:

- Call our service centres to help you solve your problem.
- Access the service web site to receive related information.

All information on service web sites can be found in the warranty section of this guide.

Best care for your Vye Notebook

Knowing how to take care of your Vye Notebook notebook can avoid the notebook from coming to harm or being damaged. As an electrical appliance, this product has the ability to cause serious harm or death.

Taking care of the notebook

- Handle with extreme care.
- Do not expose the notebook to temperatures above 50° C or below 0° C.
- Keep the notebook away from direct sunlight or heat sources.
- Do not expose the notebook to rain or moisture.
- Do not spill water or any other liquid on the notebook.
- Do not place the notebook near magnetic fields.
- Avoid heavy shocks or vibrations to the notebook.
- Do not expose the notebook to dusty or dirty environments.
- Do not place objects on top of the notebook.
- Do not place the notebook on uneven surfaces.
- Make sure that the convertible hinge is in the correct position before closing the display screen.
- Do not slam the display screen when closing it.
- Do not operate the touch-panel using anything besides the stylus pen of the notebook. (mini-v touch screen version)
- Do not cover the enclosure openings. It will block the air convection of the cooling system.
- Only use the adapter specifically provided with your notebook.
- Make sure the notebook is turned off and the adapter is unplugged before changing any system modules (battery pack, DRAM module, hard disk, etc.).

- Carefully read the specifications and safety precautions written on the adapter.
- Make sure the power source meets the requirements detailed on the power adapter and is safe to use before connecting the adapter to the source.
- Do not connect the adapter to any other devices.
- Do not place heavy objects on top of the adapter or power cord; do not step on them.
- Do not pull on the power cord; disconnect the notebook at the plug when unplugging it.
- Disconnect the adapter from the power source when the notebook is not being used.

Taking care of your battery pack

- Read the safety precautions indicated on the battery.
- Keep the battery away from direct sunlight or heat.
- When Vye Notebook is turned off, the best temperature for preserving the battery is between 0° and 30° C.
- Do not expose the battery to rain or moisture.
- Do not spill water or any other liquid on the battery.
- Avoid heavy shocks to the battery.
- Do not put any heavy objects on top of the battery.
- Keep the battery away from children.
- Periodically recharge the battery.

Return of old units

As far as possible, our devices are produced from materials which can be appropriately recycled.

After use, the device can be taken back for re-utilisation or recycling of the materials, insofar as it is returned in a state corresponding to proper use. Non-recyclable device components should be disposed of appropriately.

To return a device, please use the recycling and disposal facilities available in your country.

Further information about country-specific recycling and disposal facilities can be found on the internet at: www.vyepc.com/environment

If you have any other questions about disposal, please contact your sales agent or our Help Desk.

2. Getting Started

www.vyepc.pl

Packing list:

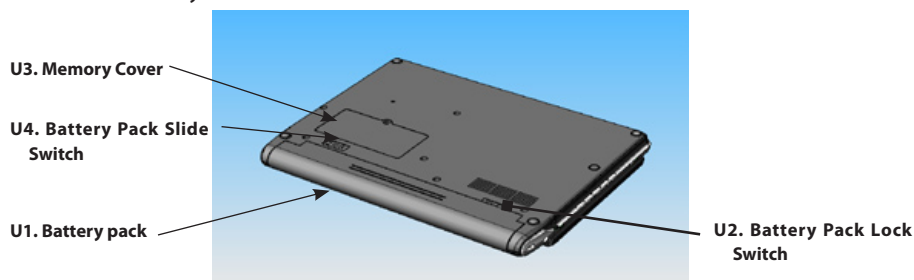
What should be in your mini-v gift box?

- 1 Vye mini-v S41 Notebook
- 2 Power Adapter
- 3 Power Cord
- 4 User Guide
- 5 Carry Pocket
- 6 O/S Licence Pack

Unpack your Vye mini-v S41 carefully, should you be missing any items you should contact the retail outlet where you bought the product, or call our Help desk on:

A Glance at your mini-v:

The underside of your mini-v



U1. Battery pack

This serves as the main power of this notebook when the AC adapter cannot be used.

U2. Battery Pack Lock Switch

Locks the battery pack in place.

U3. Memory Cover

This is used to hide the memory. Remove it when you intend to install or replace the memory.

U4. Battery Pack Slide Switch

This switch allows you to slide the battery pack when you intend to remove it.

A Glance at your mini-v:



1. Camera

Take pictures and video conference with the built in camera.

2. Touch Screen Display

Use the stylus and touch screen to operate your mini-v.

3. Screen Brightness Button

This allows you to adjust the brightness of the screen

4. Direction Button

This allows you to step the cursor across the screen.

5. Joystick Pointer

This allows you to move the mouse cursor on the screen.

6. Built-in Stereo Speakers

Audio output devices that amplify the sound emitted by the notebook.

7. 10/100 LAN Connection

Connect your mini-v to a cable network.

8. Monitor Out

This allows you to connect a Monitor to your mini-v.

9. USB 2.0

Connect your mini-v to a USB device.

10. Rotate Button

Rotate the mini-v display.

11. Enter Button

Press to action a selection.

12. Scroll Button

This allows you to scroll the content of the activated window in a similar way to the PgUp/PgDn buttons.

10. Power Status LED

When blue your mini-v is on. When flashing your mini-v is in standby mode.

13. Left & Right select Buttons (Joystick)

This allows you to select an icon or activate its function. These operate the same as when you right-click/left-click the touchpad buttons.

14. Screen Status LEDs

Displays the power, bluetooth and wireless status.

15. DVD / RW Power ON/OFF & Eject buttons

You can turn off your DVD to conserve power consumption
Open the DVD tray with the Eject button.

16. Keyboard

An input device that allows users to insert data and to control the notebook.

17. Power On /Off Switch

Turn your mini-v on and off or place the unit in standby.

18. CF Card slot

Connect your mini-v to a CF Card.

19. Wireless LAN and Bluetooth On/Off

Turns the wireless receiver on or off.

20. Touchpad and Left and Right Select Buttons

This allows you to move the mouse cursor on the screen and offers you the same functionality as a mouse.

21. Status LEDs

Status of battery charging, hard disk operation, caps lock, number lock and scroll lock.

22. Power Status LED

Shows power status of mini-v: on / standby / hibernate

23. 3 in 1 Media Slot

This is used to insert a memory card.

24. Microphone Input Jack

This allows you to connect a microphone and make a sound recording.

25. Headphone Jack

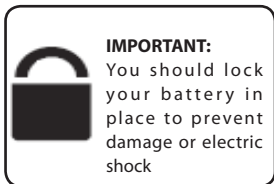
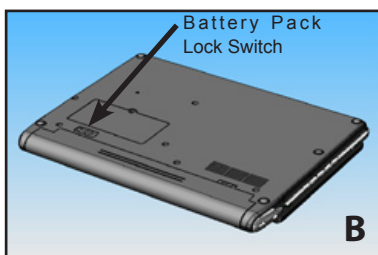
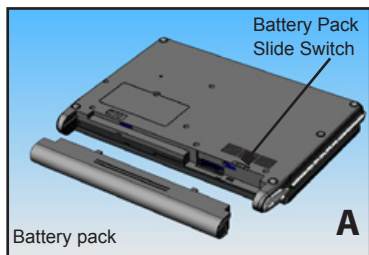
This is used to connect stereo headphones for audio output.

26. Volume dial button

This is used to adjust the level of the sound / audio output.

Battery Installation:


1. Insert the battery as illustrated in figure A
2. Turn the mini-v over and lock the battery as illustrated in figure B

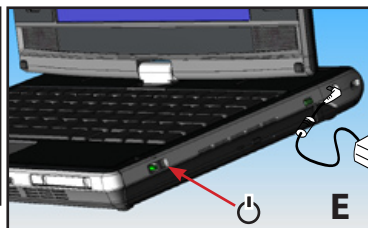
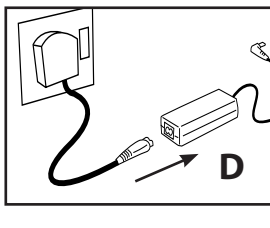
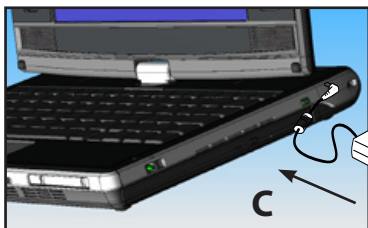


Turning on the mini-v:

1. Connect the power supply (figure C)
2. Connect power supply to mains (figure D)
3. Turn on the notebook (figure E)

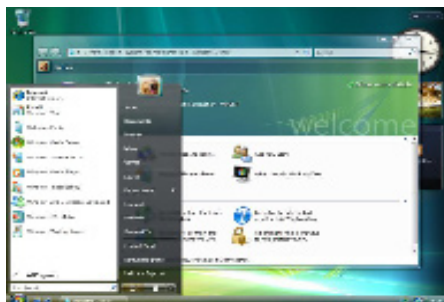
ON POWER UP: The battery pack will start charging and the battery LED

() will slowly blink. The battery LED will go out after the battery pack has been fully charged.



Starting your Mini-v for the first time.

Your mini-v has is shipped with an Operating System (O/S). Once your mini-v has been switched on, the O/S will guide you through the set-up of your notebook.



3. Operation of your mini-v



new
portable
devices

Using the tilt, swivel and turn screen:

The display of your mini-v can be rotated up to 180 degrees and lowered as illustrated below. The mini-v hinge allows you to use your mini-v as a notebook, tablet, or MP4 movie player.



1. Fold the LCD screen to stand vertically up at a right angle (90 Degrees) to the keyboards.



2. Twist the screen whilst it is vertical, do not twist the screen at an angle to avoid damage to the keyboard.



3. Twist the screen clockwise until the screen orientation is reversed away from the keyboard.



4. Do not leave items such as the stylus on the Keyboard, check to make sure the keyboard is clear before folding the screen back down.



5. Fold the screen back down so that it rests on the rubber stops.



6. Use your notebook as a tablet or movie player. Make sure that the battery pack lock switch is engaged in this mode.

IMPORTANT: When you rotate the display, please do not press it down or angle it towards the keyboard, as the display may get jammed on the keyboard and damage the keys. Such damage will not be covered by your Warranty!



IMPORTANT:

You should lock your battery in place to prevent damage or electric shock

3

Operation of your mini-v

Special Keyboard Functions:

www.vyepc.pl

Your mini-v employs hotkeys to access most of the computer's controls like Rotation, Resolution, Brightness, Bluetooth, Suspend, Display switching, Wireless LAN, Camera, TV, Silent Mode, GPS, ODD, Launcher, Shutter for Camera and Zoom in/out function... and so on.

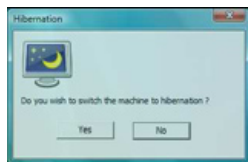
Fn + Esc (Resolution):

Switch the resolution of screen from "800x600 mode" to "1024x600 mode (preview mode)"



Fn + F1 (Bluetooth ON/OFF):

This allows you to turn Bluetooth ON/OFF.



Fn + F2 (Hibernation):

Switch the notebook into sleep mode. In advanced settings, you may also switch it to stand-by mode.

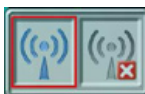
Fn + F3 (Select Display Device):

Switch the notebook to output the display to an externally connected screen.



Fn + F4 (Wireless LAN):

Turns the wireless LAN ON and OFF



Fn + F5 (Camera):

Turns the camera ON and OFF



Fn + F6 (TV)

Turns the TV Tuner ON and OFF, where fitted.



Fn + F9 (Silent mode):

Turns the units cooling fan ON and OFF



Fn + F10 (GPS):

Turns the GPS ON and OFF, where fitted.



Rotation Button (See 'Action Buttons' page 9):

Rotates the orientation of the screen to correspond with the position of the tilt and turn screen.



Brightness Button (See 'Action Buttons' page 9):

Increases and decrease the LCD screen brightness



Touch Pad and buttons:

The touch pad allows you to operate the screen cursor, just like a standard mouse.

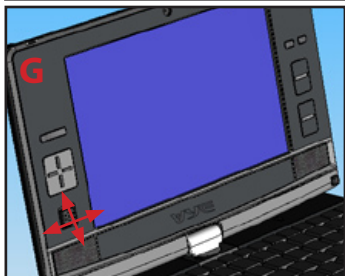
Under the touch pad is a left button for selecting an icon and a right button for query. You can use your index finger on the touch pad and your thumb to select the left and right buttons. (figure F)



Joystick and buttons:

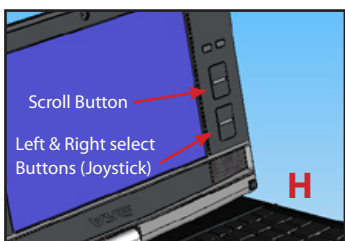
Your mini-v is fitted with a joystick pointer that allows you to operate the screen cursor.

The joystick is fitted with left and right select buttons. Pressing on the Joystick has the same effect as pressing on the left button. (figure G)



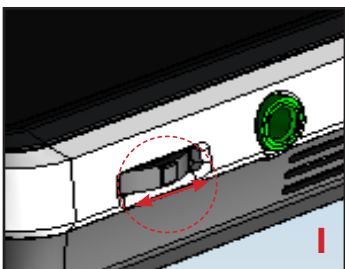
Scroll buttons:

The scroll button allows you to scroll documents and/or Internet sites that occupy more than one vertical page. You can use the scroll functions when you see a slide bar in your active application window. (figure H)



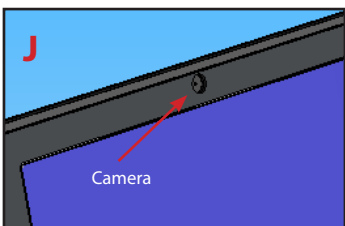
Volume Button:

Your mini-v S41 is equipped with a volume control button. You can use this to raise and lower the volume of sound emitted from the stereo speakers or headphones. (figure I)



Camera:

Your mini-v S41 is equipped with a Camera. You can use the camera for Video Conferences or to create pictures and movies. (figure J)

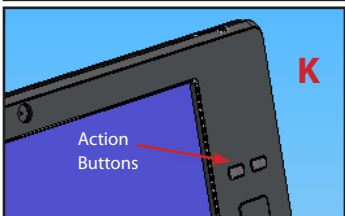


Action buttons (See page .8.):

Your mini-v S41 is equipped with 2 action buttons:

Rotation: Rotates display

Enter: Accepts selection




GPS (Global Positioning System): www.vyepc.pl

If your mini-v came fitted with the GPS option, then you can use it with commercially available mapping software. The receiver is operated as follows:

Fn + F10 (GPS):

Turns the GPS ON and OFF.



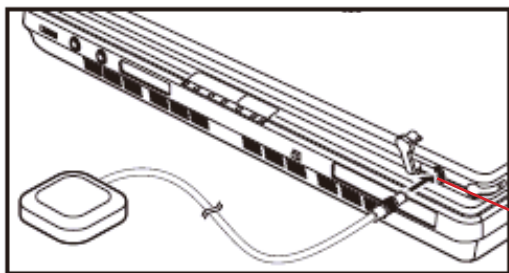
The GPS LED  will light on or blink when its function is turned on.

LED On (GPS is on) : *Receiving GPS signals from satellites*

Blinking LED (GPS is on) : *Not receiving GPS signals from satellites*

Note: Although this machine has a built-in GPS antenna, you can use an external GPS antenna to improve the reception when you use the GPS function in places such as in a car and a building where good reception is not guaranteed. Follow the procedures below to use an external GPS antenna.

1. Switch off the power of the machine and close the display.
2. Uncover the GPS antenna jack.
3. Install the external GPS antenna in the jack.



External GPS Antenna port

4. Switch on the power of the machine.
5. Activate your GPS software.



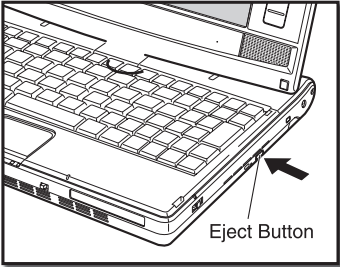
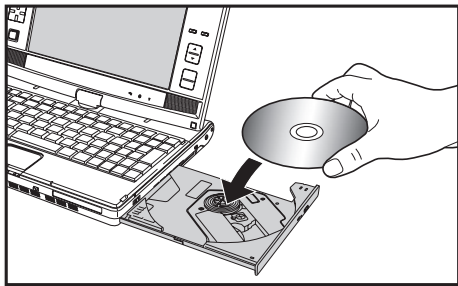
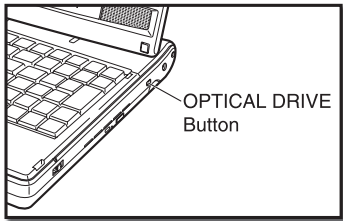
Optical Disk:

Your mini-v comes fitted with the an optical disk so you can use it to read and create Data Disks, Music Disks and DVDs. The optical drive is operated as follows:



NOTE

You can turn the optical drive on and off to conserve battery power and to reduce power consumption



1. To open the DVD tray use the **Eject Button**.

There is a short delay of a few seconds before the tray opens, whilst the operating system disconnects from the drive. You will hear the drive unlocking and the tray will pop out.

2. Place your CD / DVD in the tray, locating the hole in the middle on the spindle in the tray. There will be a click, when the disk is seated properly.

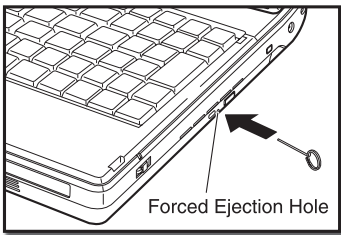
Note: The optical drive will read/write to the bottom face of the disk, NOT the top!

Close the tray by pushing it back into the mini-v. The tray will click and lock into place when properly closed.



NOTE

If your DVD tray not open when the eject button is pressed, you can manually release it. **TURN OFF YOUR MINI-V** and use a paper clip or small screw-driver to disengage the tray's locking mechanism.



You will hear the drive tray unlock and the tray will pop out.

CAUTION: Manually ejecting the tray whilst your mini-v is powered on could cause you or your mini-v harm.

Important: Your ability to play DVD's on the optical drive will depend on which operating system you have chosen, region of the DVD and what playback software you use. You may have to download additional plug-ins and/or video codec files from the internet to suit your configuration.

Display (Touch panel)

Your mini-v is equipped with a touch panel / touch screen display.

You can use the mini-v stylus for repositioning the mouse cursor on the display or you can write directly onto the display by using the software supplied for handwriting recognition, or else you can draw or take notes.

Brief introduction to the use of the Touch Screen

The stylus pen can be used like a mouse as follows:

1. Touch the display and the cursor will move to the contact point.
2. Touching the display, on an icon or on a menu, will highlight an item
(Equivalent to a mouse single left click)
3. Touching an icon twice, will activate an item.
(Equivalent to a mouse double left click)
4. Touching an icon or an object on the display and then keeping the stylus pen attached to the display, allows the object can be dragged to another position.



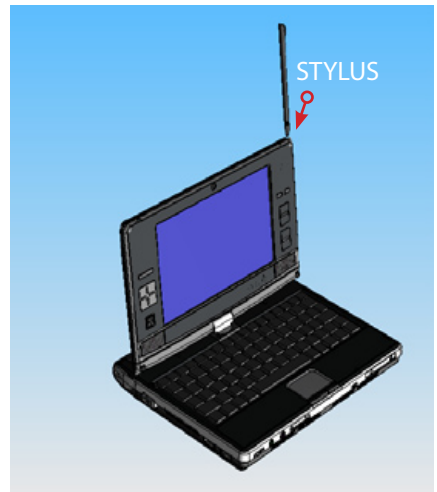
WARNING

YOU SHOULD ONLY USE THE STYLUS PROVIDED WITH THE MINI-V. USE OF A PEN OR PENCIL WILL DAMAGE YOUR TOUCH SCREEN AND DAMAGE CAUSED BY SUCH MISUSE WILL NOT BE COVERED BY YOUR WARRANTY!

Touch screen calibration:

1. Select pen mount control from the short-cut on your mini-v desktop.
2. Select the "configure" option
3. Follow the instructions to calibrate your touch screen.

NOTE: If you do not calibrate your touch screen you may be unable to use the touch screen functionality reliably



Warranty Support



Your mini-v is shipped with one years warranty for components and parts as standard.

Making a Warranty Claim

To utilise the VYE WARRANTY SERVICE, you need to simply call the Warranty Support number below and provide them with proof and date of purchase. This would take the form of a receipt or copy invoice.

Initial Defect

If the product is wrongly delivered, missing any items, or damaged, please contact the store where you purchased the product, or our support centre within 2 weeks of the purchase. If you have purchased the product on-line you should check your product as described by the terms of sale from the on-line retailer.

Contact us

✉ POLAND Support Centre

Telephone service, available from 9 am to 5 pm, Monday - Friday, excluding Christmas, New Year and Bank Holidays.

Look for phone on

www.vyepc.pl

Warranty Regulation

www.vyepc.pl

Thank you for purchasing this quality product from VYE COMPUTERS. Our products are developed to meet high standards in both quality and technology. Additionally, to ensure product quality, our products are accompanied by a limited global warranty.

This warranty only applies to VYE COMPUTERS products sold to end customers.

The following text will provide you with detailed information on the warranty offered by VYE COMPUTERS, to which you will be entitled to in case of material or manufacturing faults with the product you purchased.

Warranty procedures

The warranty begins on the day of purchase (the date of purchase on the original purchase document receipt) or the date on the delivery slip for Enterprise products. Please note that warranty claims can only be asserted by presenting the original purchase receipt or the original delivery slip. Therefore, always keep your purchase receipt or your delivery slip together with the warranty documents.

The receipt/note has to state the product name and the product identification number. Warranty claims must be asserted immediately following the discovery of the fault to the sales or service partner, or to the VYE COMPUTERS Help Desk.

Warranty Scope

Unless regulated in some other manner, the warranty covers all material and labour defects which occur in the respective warranty period. The warranty offer depends on the specific product. The purchase receipt or delivery note or the attached flyer (if it is valid for your country) states which of the different kinds of warranty, subsequently described in detail including their duration, applies to the product that you have purchased.

Defects that are caused by improper use are excluded from the warranty. Proper operation is understood to be operation of the product under the conditions described in the operating manual or documentation of the product. The warranty is limited to producing the hardware-features and the condition for the original product at the time of shipment. For this it is sufficient when the affected product fulfils the test requirements in accordance with the VYE COMPUTERS specifications for the original product in accordance with the product data sheet. The warranty of VYE COMPUTERS does not include the restoration of customer data or software.

Within the warranties named above and described in detail below, the warranty shall be carried out by repair or exchange at the discretion of VYE COMPUTERS. Defective parts shall be replaced with new or as good as new parts where there are material and/or

processing faults. If necessary, the entire product shall be exchanged with an identical or functionally identical product. The value of the warranty service is always limited to the value of the defective product.

The defective parts removed from a product as part of a warranty case shall become the property of VYE COMPUTERS and shall be retained by the End Customer for VYE COMPUTERS, if necessary. If these parts cannot be returned to VYE COMPUTERS upon request, VYE COMPUTERS is entitled to charge for a corresponding amount.

For original VYE COMPUTERS' parts used in warranty cases, only the remaining duration of the warranty for this device shall apply if the parts are installed in a VYE COMPUTERS product. Regardless of the warranty scope of the system, only the limited scope specifically described in the warranty conditions applies for data storage media. VYE COMPUTERS or its authorised service partners will perform warranty services during regular working hours on regular working days. These may differ depending on national or regional customs

Warranty Description

Return-to-Base-Warranty (Send-In-Warranty)

The customer reports a defective device to the Help Desk over the telephone. If the Help Desk cannot solve a problem over the telephone, the customer will be informed of which VYE COMPUTERS service partner he or she will be able to send the device to. For this, the customer is responsible for the despatch and insurance of the product. The transport and insurance costs shall be borne by the customer. VYE COMPUTERS shall assume the costs for the materials / spare parts and the labour costs as required, as well as the return postage to the sender or to any other address within the country in which the service partner authorised by VYE COMPUTERS is located.

Limited Warranty on Data Storage Media and Batteries

The warranty on batteries and data storage media products is limited. During a period of six months after the purchase, VYE COMPUTERS will replace any data carrier or battery that turns out to be physically defective upon delivery if VYE COMPUTERS supplied it with the product.

Proceeding in a warranty case

The following information is an explanation of what you must do in the case of a warranty claim.

Should, contrary to expectation, your VYE COMPUTERS product be defective, please contact the VYE COMPUTERS Help Desk first. There, our staff will help you to diagnose defects and malfunctions, and, in a considerable number of cases, solve them rapidly over the phone.

You will find the Help Desk phone number on the Internet at www.vyepc.com/support. Please always have the following information ready before calling the Help Desk:

- Your name, address, post code and a telephone number at which you can be reached

- the model designation, the article code and the serial number of the product
- the date and place of purchase
- a brief description of the problem.

In case of a warranty claim, please always have the original CDs or Software supplied at the time of purchase, with which the factory preinstalled original configuration can be restored.

The Help Desk will co-ordinate the further procedure with customer.

Data backup

A regular data backup is always recommended when using any computer hardware or software. Please note that the responsibility for a complete data backup, including application and operating system software, shall be borne exclusively by the customer. Data backup is particularly advisable before the service is performed, as it cannot be ensured that no data will be lost. Any liability for data and information losses occurring as part of the provision of warranty is excluded.

Warranty exclusions

The following points are not covered by the warranty:

- minor defects or deviations from the product specifications, that are immaterial or negligible as regards to the value or the functioning of the product
- providing and installing upgrades/updates of BIOS, drivers or software
- resetting security functions, deleting passwords, etc.
- backup or restoring customer-specific data or software
- reinstalling non executable software/operating systems (e.g. deleting system relevant files, faulty system settings or self reproducing computer programs such as computer viruses)
- the uninterrupted or fault free functioning of integrated installed or supplied software, nor the quality, performance, merchantability or fitness of such software or any accompanying documentation for any particular purpose, even if it was delivered with a VYE COMPUTERS product.
- signs of wear on data carriers, backlights, picture tubes of plasma screens/CRT monitors (screen burn or loss of brightness)
- replacing consumed batteries
- parts and components subject to consumption (e.g. printer cartridges)
- reduced capacity of accumulators
- defective pixel in notebook displays and LCD screens within ISO 13406-2 / class II

Neither does the standard warranty cover diagnosis and the remedying of defects caused:

- through improper use or improper maintenance of the device by the customer or third parties (e.g. LCD breakage, mechanical or casing damages, defective cables or plugs); improper actions include operations that are not compatible with the instructions contained in the product manual
- by force majeure (lightning, floods, war, etc.)
- by dirt or contamination (mouse, magnetic tape drive, etc.)
- by extraordinary environmental influences (excess voltage, magnetic fields, etc.) or
- by other circumstances of which VYE COMPUTERS is not responsible.

Warranty Claims Expire Upon:

- equipment or use of VYE COMPUTERS products with spare parts, components and or peripherals not certified for the respective use by VYE COMPUTERS,
- in case of services/repairs or other changes of the product by persons not authorised by VYE COMPUTERS , unless the customer proves that any defects occurring thereafter were neither caused by nor arose as a consequence of such events.

Limitation of Liability

Any claims of the party entitled to the warranty not expressly named in these warranty conditions are excluded, in as much as no mandatory legal obligation or liability exists for VYE COMPUTERS according to the applicable laws of the respective country. This is also true with regard to claims to the replacement of subsequent damage, lost profits, data or information loss or damage as the result of an interruption in operation.

Valid law

The warranty is subject to the valid laws in the country of purchase and is to be interpreted in agreement with the said laws. The agreement on contracts for the international sale of merchandise shall not be applied.

GENERALNY DYSTRYBUTOR



**New Portable Devices
ul. Rzeszowska 66B
39-200 Dębica**