



Notice

1) Charge the Battery

The battery in your Ex430xx hasn't been charged yet. While your Ex430xx is charging, it's important that you do not remove the battery pack. Doing so can damage your Ex430xx. Also, please don't try to take your Ex430xx apart. (If you do, it may invalidate your warranty.)

2) Select the RF function that you want

Ex430xx Series can support a lot of Internet bandwidth really quickly. Using data services while roaming will be costly. Check with your mobile operator for data roaming rates before you use data roaming.

3) Some important legal information to Ex430xx user

To the maximum extent permitted by applicable law, in no event shall Winmate or its affiliates be liable to you, any user, or third party for any indirect, special, consequential, incidental or punitive damages of any kind, arising in contract, tort, or otherwise, including, but not limited to, injury, loss of revenue, loss of goodwill, loss of business opportunity, loss of data, and/or loss of profits, regardless of the foreseeability thereof or whether Winmate or its affiliates have been advised of the possibility of such damages. And in no event shall the total liability of Winmate or its affiliates exceed the amount received from you, regardless of the legal theory under which the cause of action is brought. The foregoing does not affect any statutory rights which may not be disclaimed.

Note:

Certain apps and features may not be available in all countries.



To know your Ex430xx more

Front View



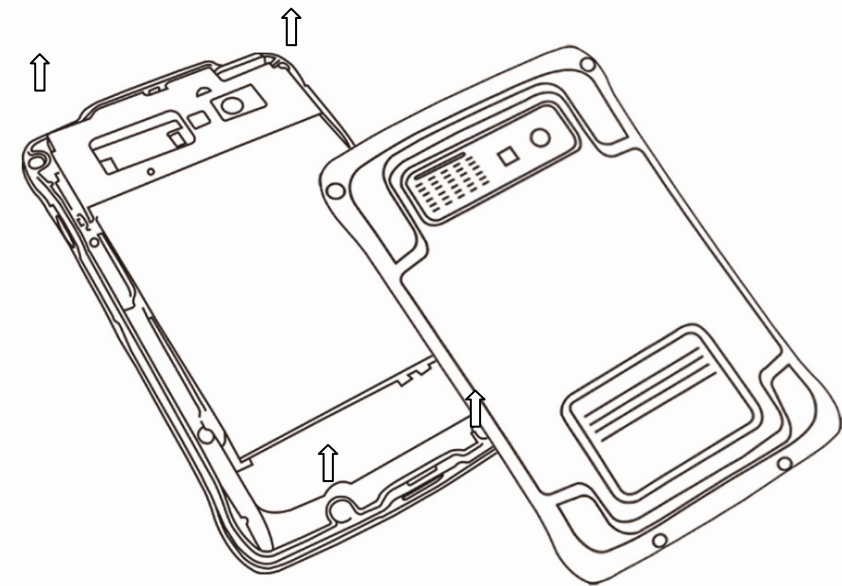
Back View



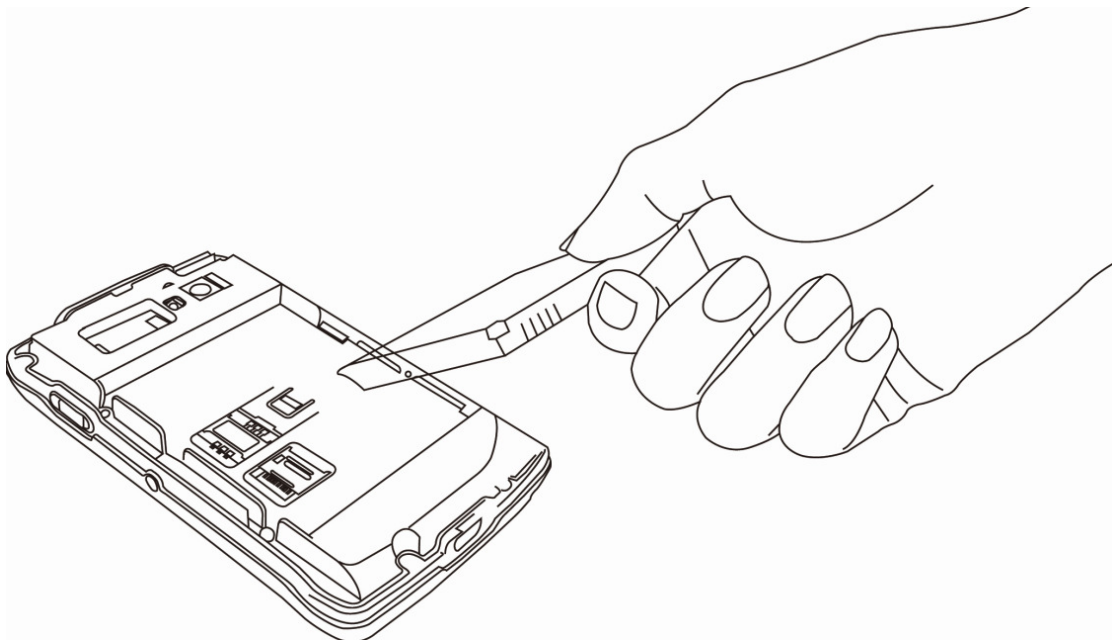
How to Start your Ex430xx

- Before you remove the back cover, make sure the Ex430xx is power off.

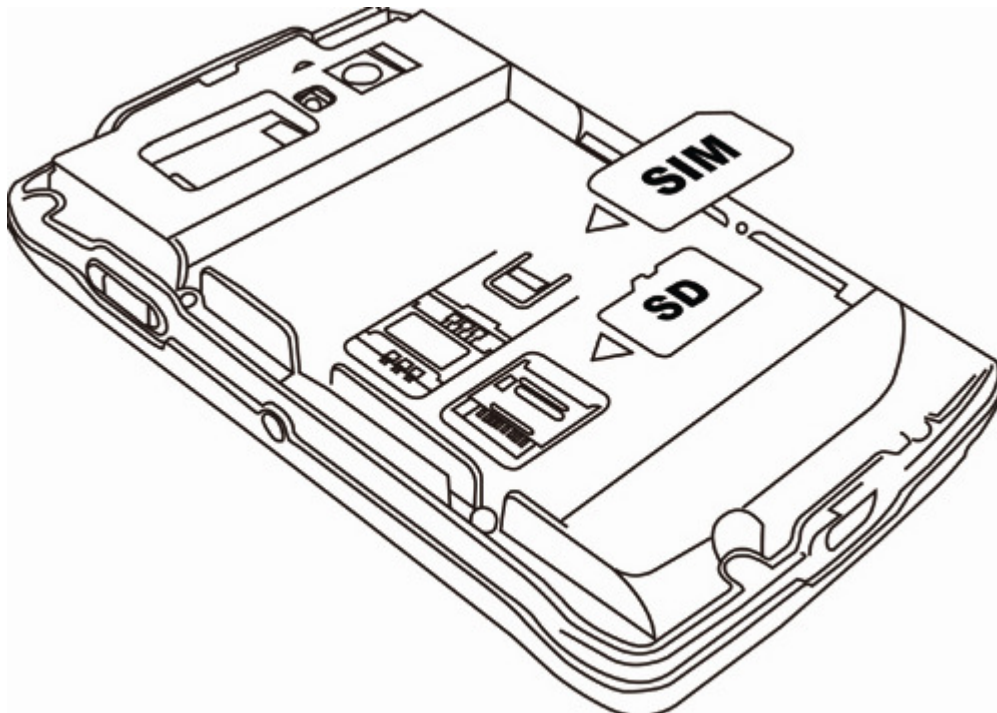
1. Make the Ex430xx facing down, and then unscrew the screws of Ex430xx.
2. Gently pull Ex430xx out of its back cover.



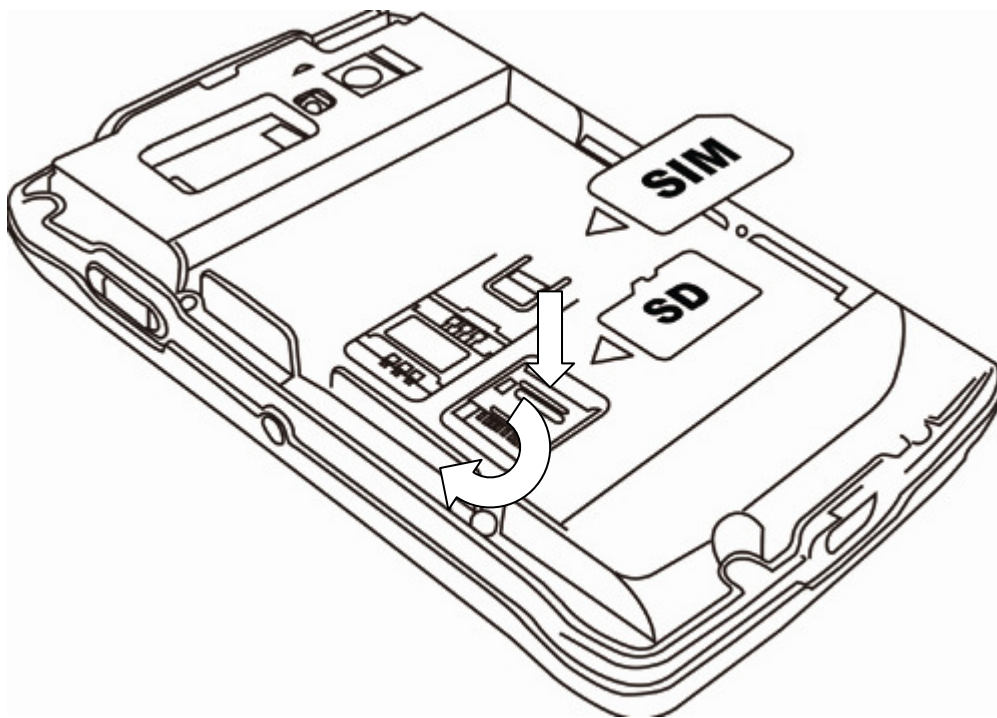
3. Pull the plastic strap, and then remove the battery.



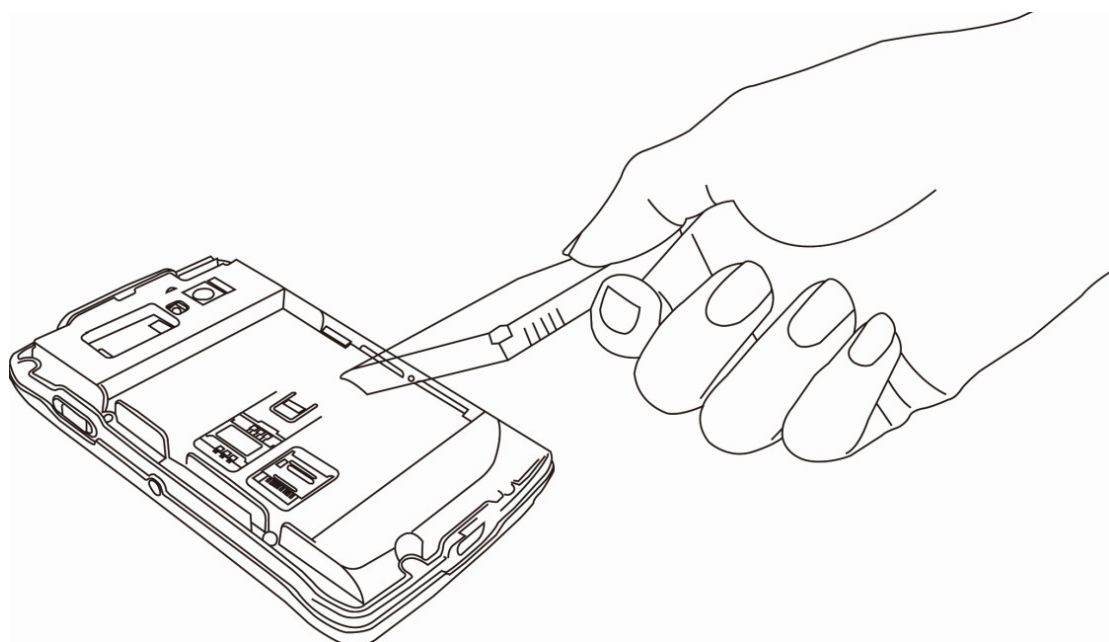
4. Insert the SIM card (with its gold contacts facing down and cut-off corner facing out) all the way into the SIM card slot.



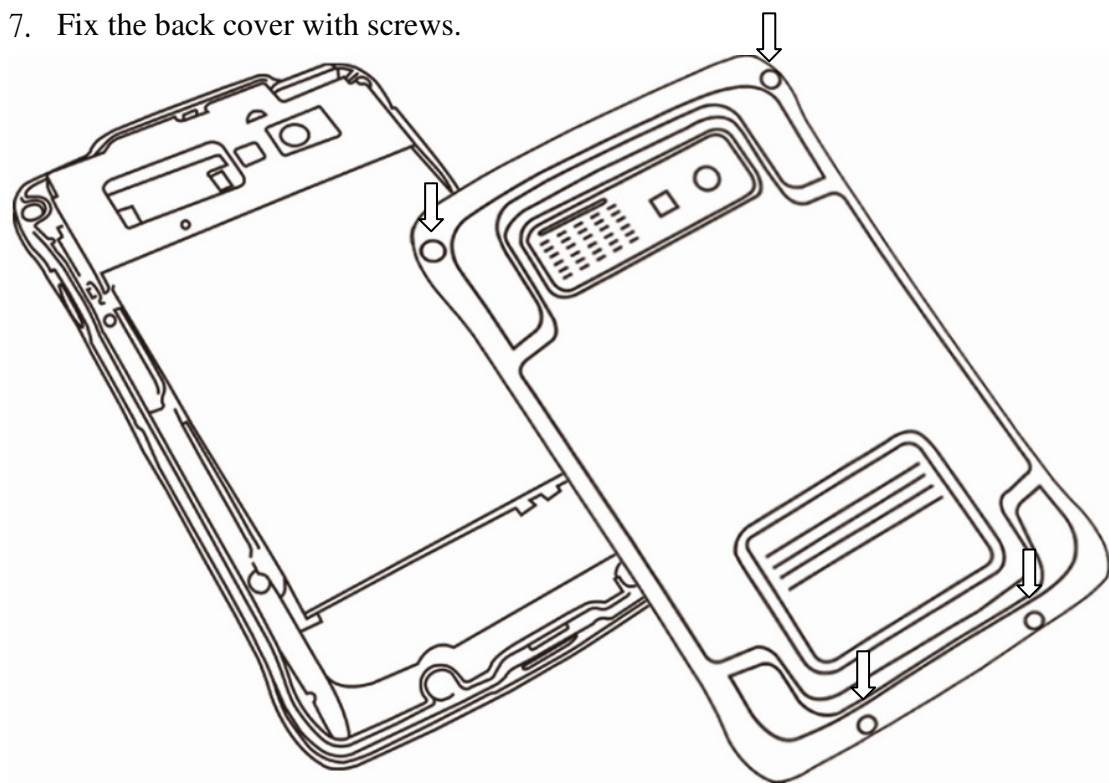
5. Push the metal cover backward and lift the metal cover. Then put the SD card into the socket, close the metal cover and push forward till click sound.



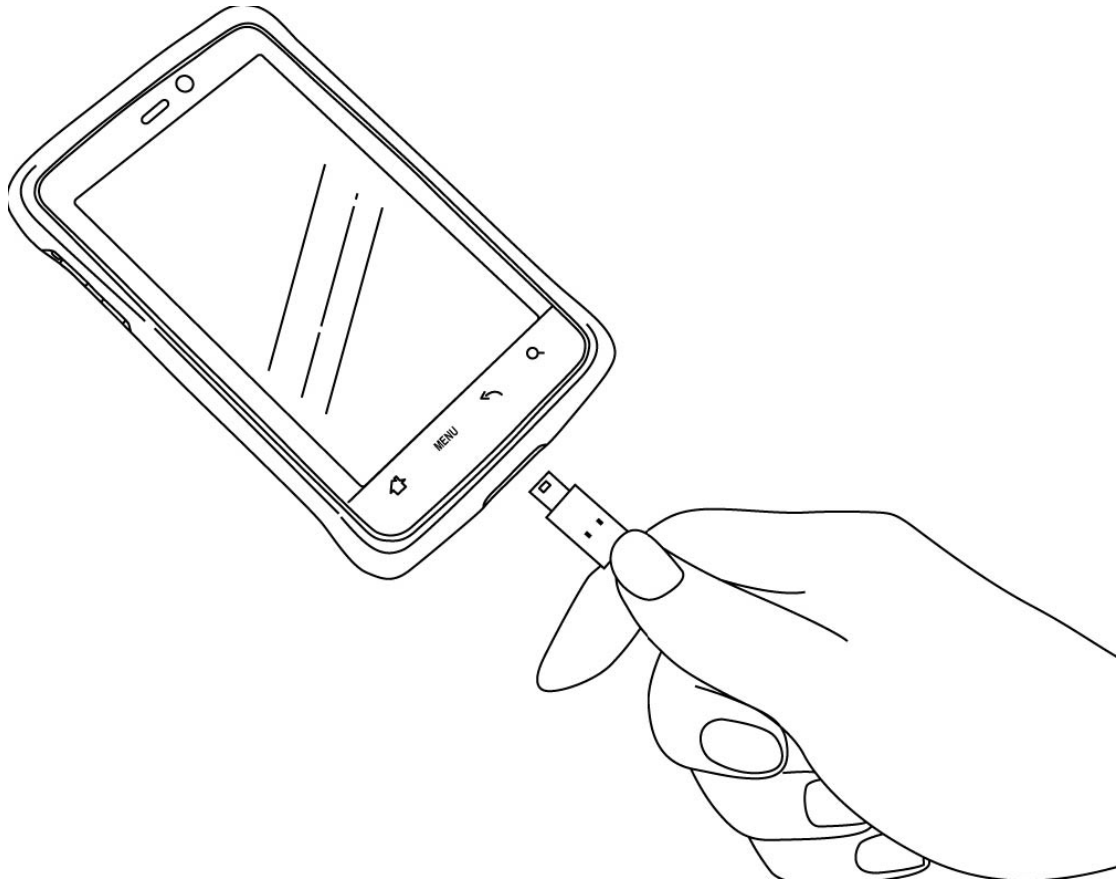
6. Reinsert the battery again.



7. Fix the back cover with screws.

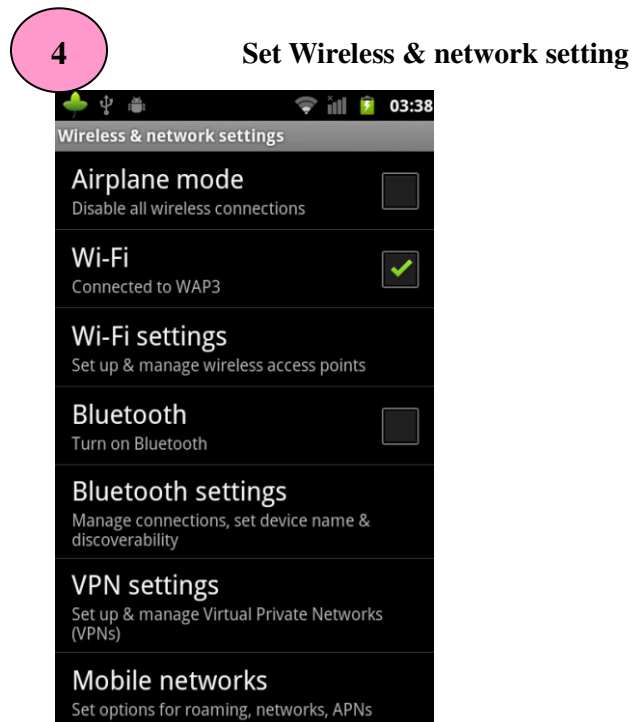
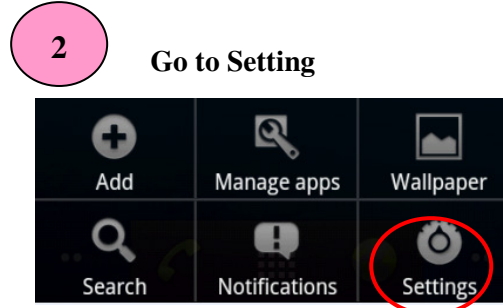


8. Use the supplied power adapter and USB cable to charge Ex430xx for 4hrs.



Setup and Go

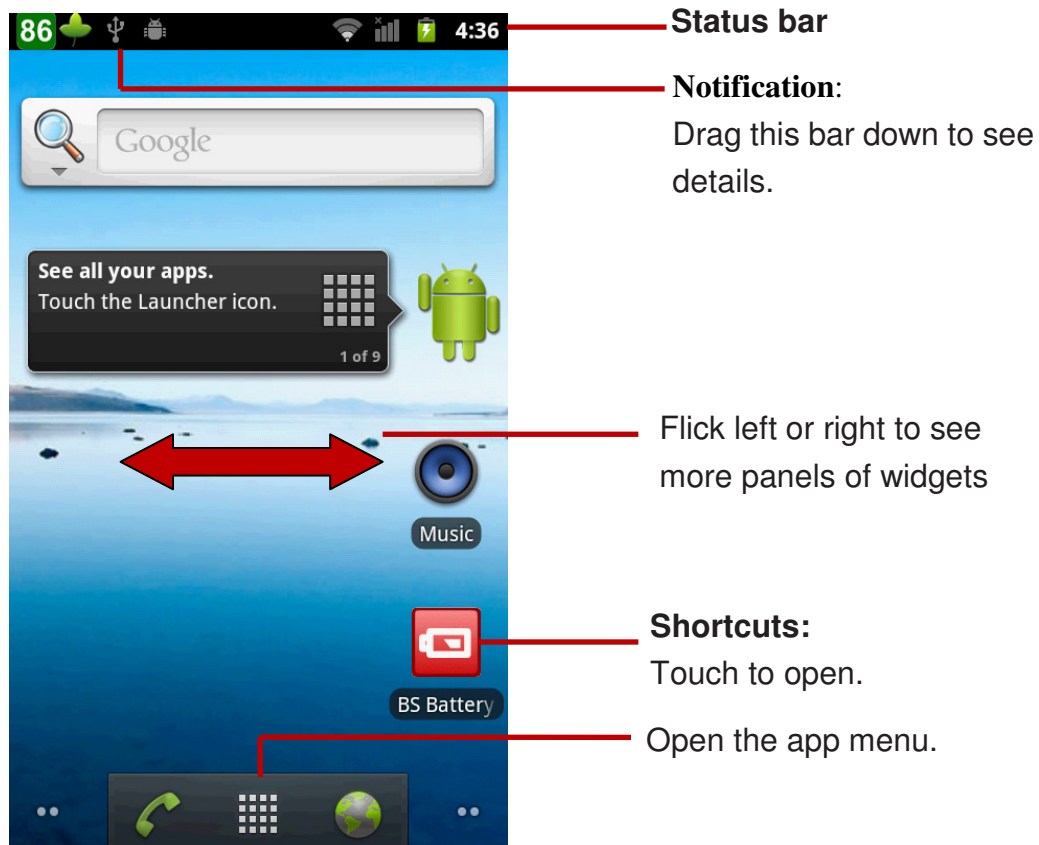
The first time turn on Ex430xx, we highly recommend you some items need to be set up, like language, networking



Note: Your E43XX supports 3G services. We strongly recommended that you purchase a 3G service that meets your needs in local area. Contact your local 3G service provider for details.

Home and APP

Your two main Ex430XX screens—Home and Apps. The home screen is what you see when you turn on the Ex430XX or touch Home from a menu. To see all of your apps, just touch





There's more help, more accessories, more free stuff.

- Updates: Ex430XX updates, PC software, user guides, online help and more at

www.winmate.com

- Accessories: Find more for your Ex430XX at

www.winmate.com

- Social: The latest news, tips & tricks, videos and somuch more—join us on:

Facebook <http://www.facebook.com/pages/Winmate/193898867300518?ref=ts>

