

MT02A

Quick Guide

Android 2.3.7



MT02A Specifications

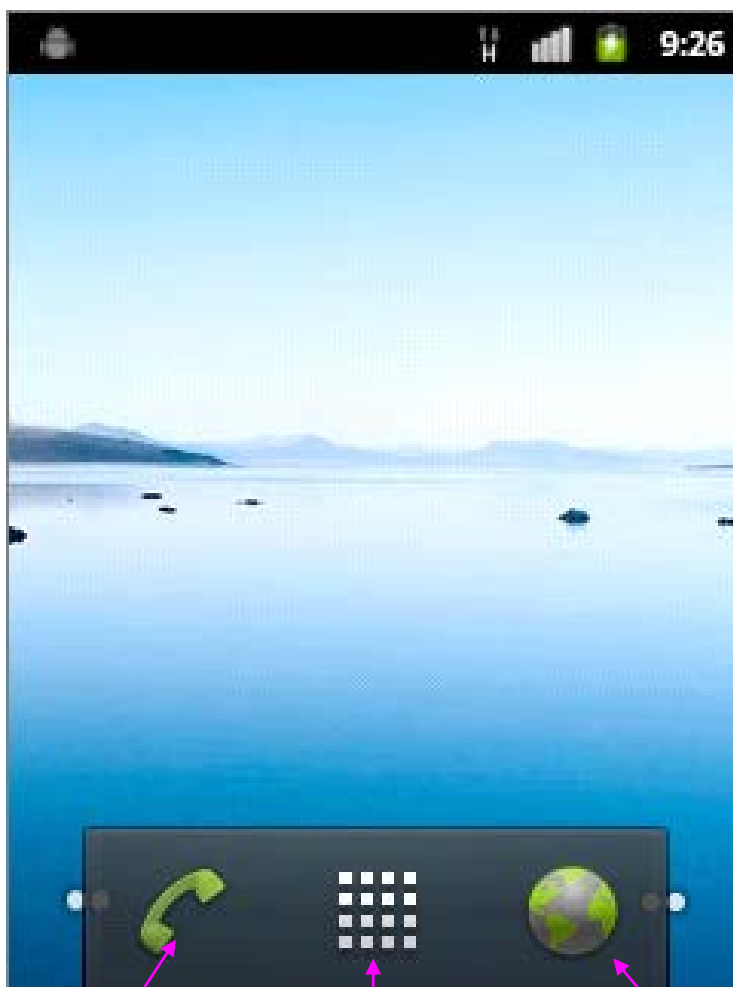
BASIC INFOMATION	
PROCESSOR	Marvell PXA910 806M
STORAGE & MEMORY	512M FLASH, 512M SDRAM
OS	Android 2.3.7
CONNECTIVITY	1. Bluetooth ; 2. WIFI with WLAN 802.11b/g ; 3. GPRS
GPS MODULE	Ublox The 6th Generation (option)
PC CONNECTOR	Mini USB; Speed@USB 2.0
SCREEN	
DISPLAY SIZE	3.5-in; QVGA(240*320) Transflective LCD
TOUCH SCREEN TYPE	Resistive
BACK LIGHT TYPE	LED
CAMERA	
MEGAPIXELS	5MP
FOCUS	Automatic
SCAN DISTENCE	5cm~30cm
IDENTIFICATION BRIGHTNESS	No less than 13Lx when no fill light, and can identifiable in 0.3Lx with fill light
EXPANSIBILITY:	
BARCODE MODULE:	NLS-EM1300
	Symbol: SE955
	NEW LAND EM300
	Symbol: SE4500
RFID MODULE:	1. 13.56MHz (ISO/IEC 14443A/B,15693) 2. UHF RFID 900MHz 3. LF RFID (125K,134.2K option)
EXPANSIBILITY:	The 2 nd ID card reader、 Fingerprint Recognition, Infrared temperature measurement
NETWORK	
NETWORK MODULE	WCDMA HSDPA 3.6Mbps
NETWORK RANGE	China Mobile's GPRS network
GPRS	GPRS with class 10, GPRSP class B。 GPRS with CS-1, CS-2, CS-3, CS-4
PHYSICAL:	
SIZE	149mm*77mm*26mm
BATTERY	3100Mah, 3.7V
WORK ENVIRONMENT	Temperature range: -20℃ ~ +50 Humidity range: +5% ~ +95%

1.KEY AND CONNECTORS



2.HOME SCREEN

Home screen gives you some important information such as missed calls, messages. At the bottom of the screen there are three icons. Press them from left to right you can quick start a call, go in APP SCREEN or start a web browser.












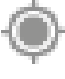




DIAL KEY

APP MENU KEY

BROWSER KEY

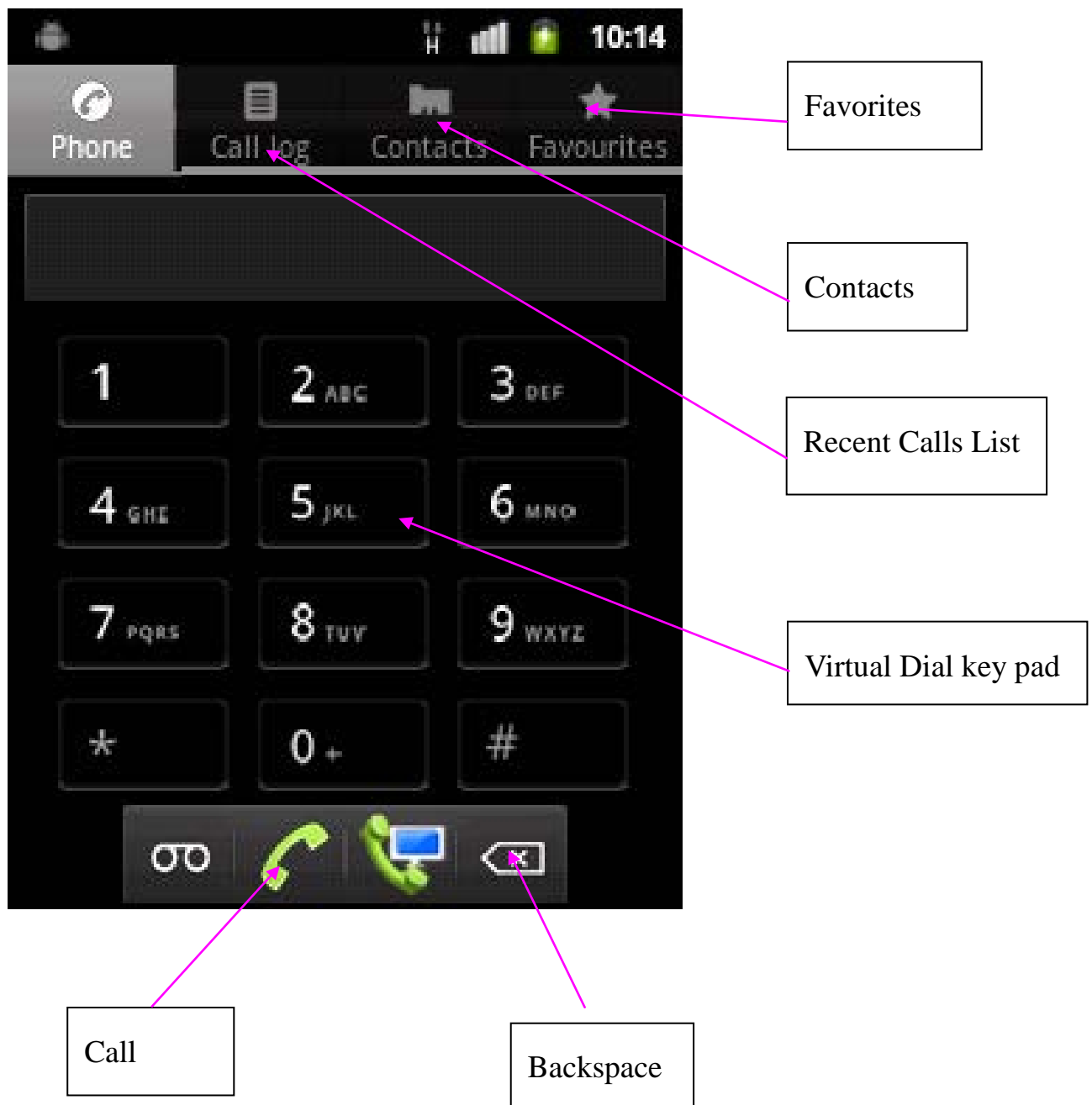
2.1 NOTIFICATION BAR ICONS:

	Network Signal		Airplane mode
	Battery level		Low battery level
	Battery Charging		Missed cal
	Wi-Fi connected		Edge mode
	New text message		No SIM
	Vibrate		GPS active
	No network signal		Bluetooth active
	Warning		USB connected

3. OPERATION INSTRUCTIONS

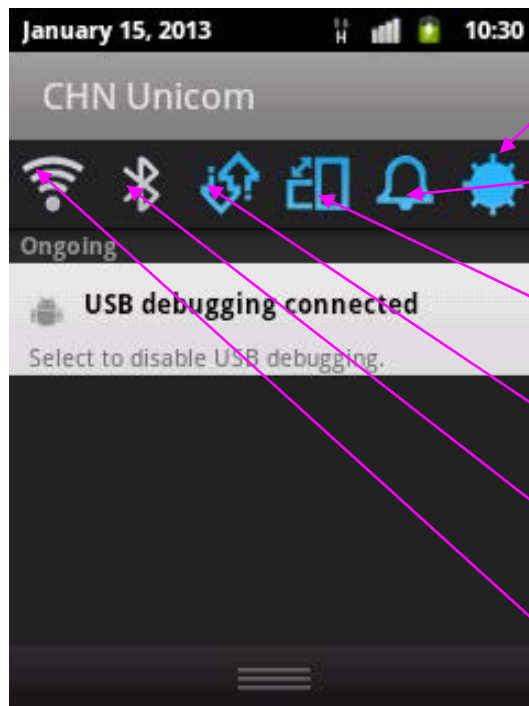
3.1 DIALING

In HOME SCREEN, touch the DIAL KEY, you will see the picture below:



3.2 NOTIFICATION BAR DRAOP-DOWN MENU

Touch the NOTIFICATION BAR and drag it down, you will see the picture below:



Click to change brightness

Click cycle to switch normal ring, vibrate and mute status.

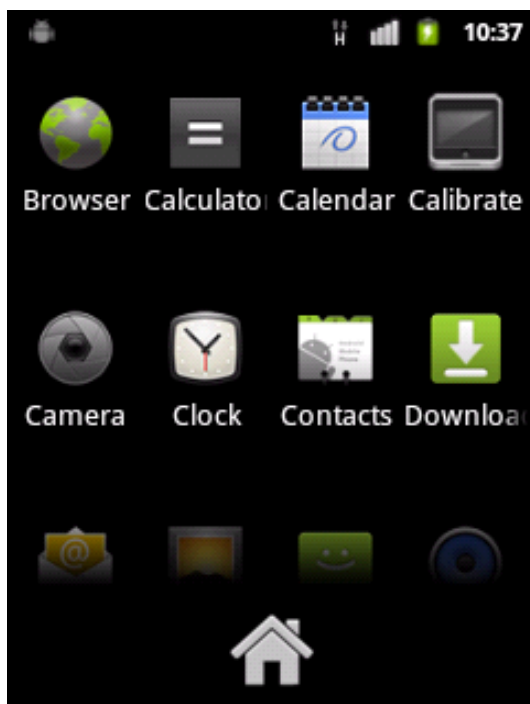
Highlight it to enable screen rotation

Highlight it to enable data connect

Highlight it to enable bluetooth

Highlight it to enable WI-FI

3.3 APP SCREEN

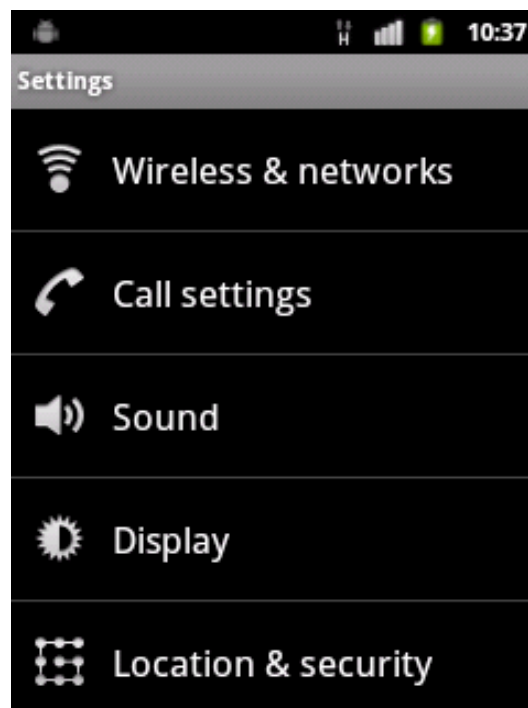


Touch APP MENU KEY in HOME SCREEN will go into APP SCREEN.

All Applications are list here. Click the icon will start the application. If there are too many icons can't display in on screen, slide finger up & down to see more icons. Click the bottom icons which is draw as a "house" will go back to the HOME SCREEN.

3.4 SETTING SCREEN

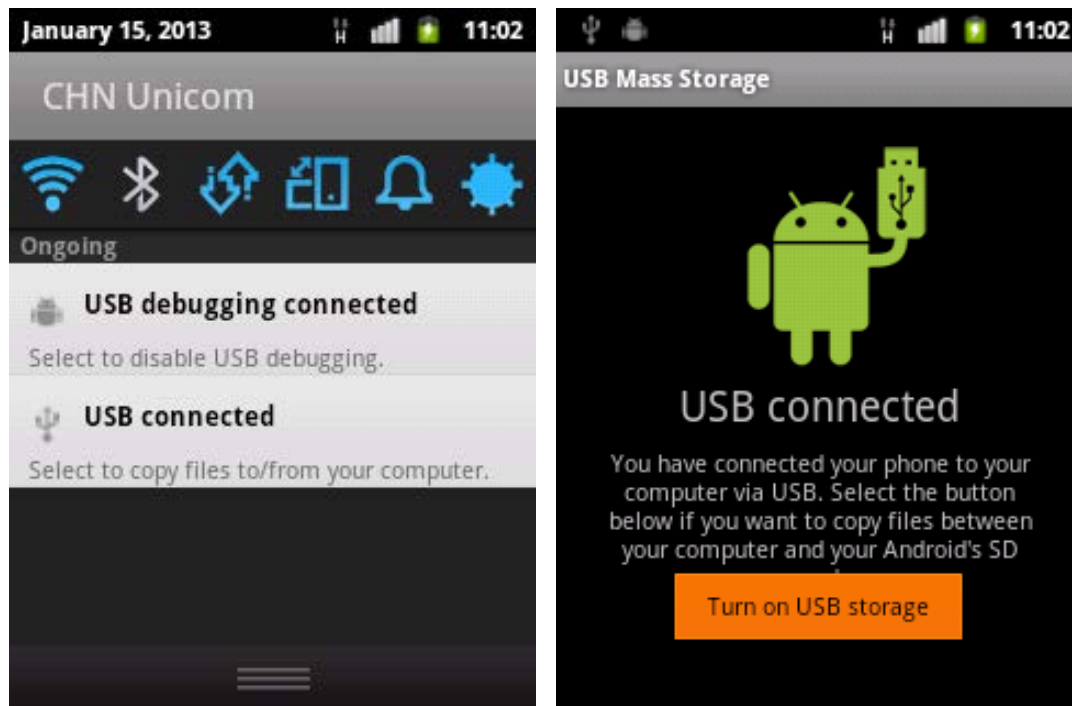
In APP SCREEN, click the “Settings” icon will go into SETTING SCREEN. All the settings of the phone are list here, such as WI-FI, LANGUAGE and APPLICATIONS. Slide up & down to see more settings.



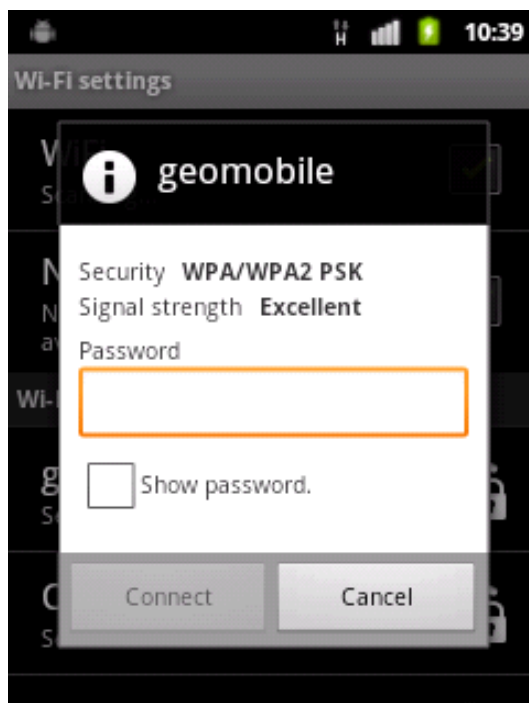
3.5 TF CARD BROWSER

Make sure the TF CARD is installed well and the USB cable is connected to PC, touch the NOTIFICATION BAR and drag it down you will see the first picture, click the “USB connected” item and then the screen change to the second picture. Click “Turn on USB storage”, when successful, the robot will change to orange. Now the pc will notice you a removable

storage device is connected, you can use it just like a u-disk.



3.6 ENABLE WI-FI

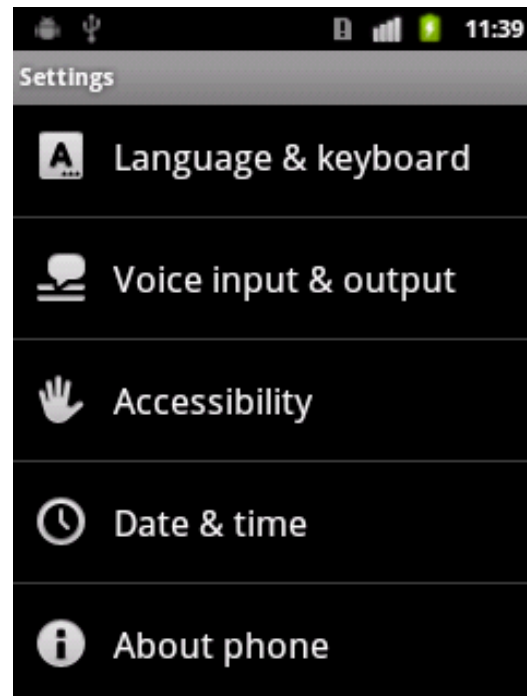
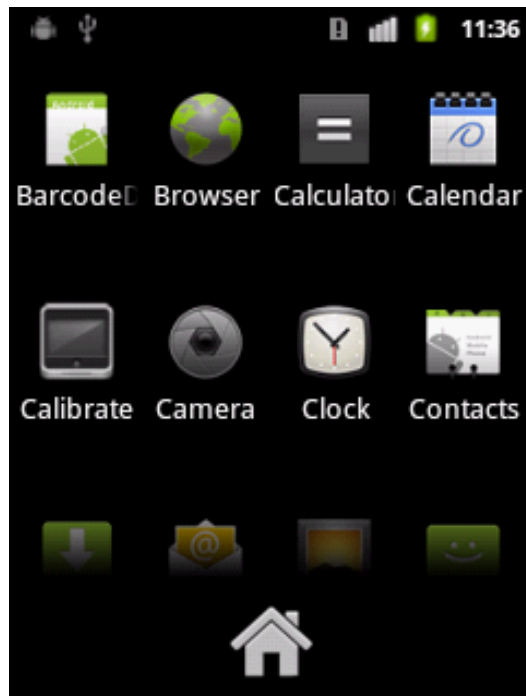


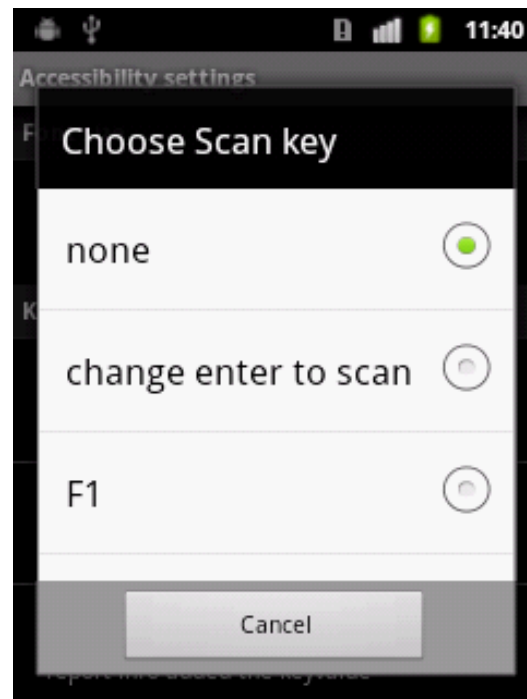
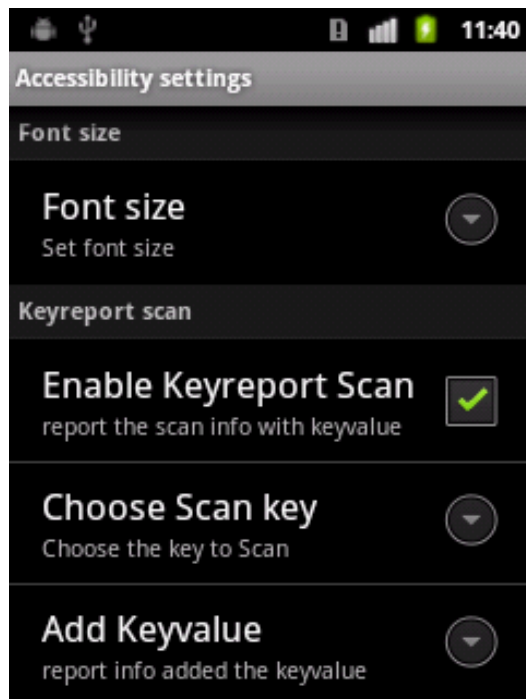
Go into Settings->Wireless & networks->Wi-Fi settings, click to enable "Wi-Fi". Then the windows below will list all the Wi-Fi hotspot searched by the phone. Direct click the hotspot you want to connect, if it is encrypted, input the key. If the hotspot hide it's SSID, please click the "Add Wi-Fi network", input

SSID and select the encrypted type(WEP or WPA).

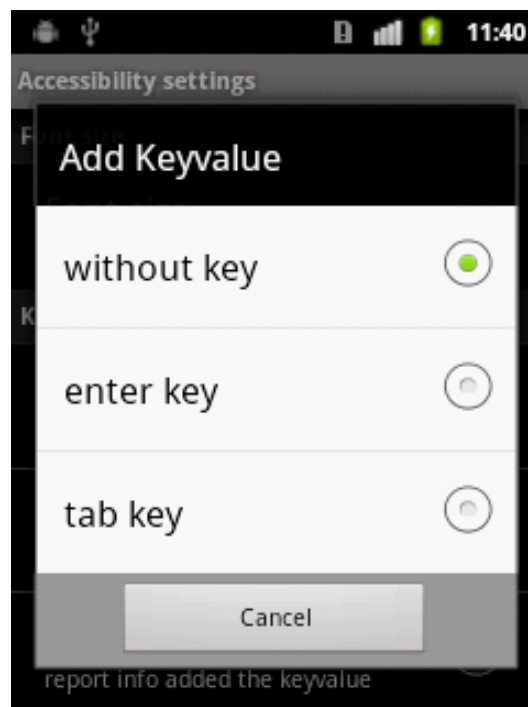
3.7 Focus Scanning

1. make sure of input method is "Android keyboard" , that is in "menue"→"Settings"→"Language & keyboard"→"Keyboard settings" do not check other input method. If you change the input method , the focus scanning won't ormal use.
2. enter "menue"→"Settings"→"Accessibility" , check the "Enable Keyreport Scan" , and chose one in "Choose Scan key" 's four choice: change enter to scan , F1 , F2 , F3 , except none. (if you choose none ,you will have no scan key to use)as pictures:





3. You can also choose add keyvalue in “Add Keyvalue”, like “without key”, “enter key”, “tab key”, as picture:

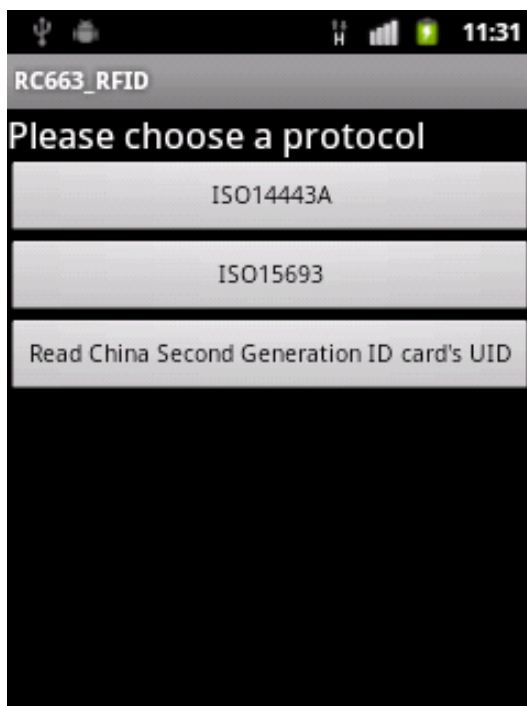


Notice:

1. Please set a focus when you use focus scanning.
2. Make sure of “Enable Keyreport Scan ” do not checked when use barcode scan demo . And the orange key becomes scan key only when you choose “change enter to scan” in “Choose Scan key” , otherwise, by default, none, or F1, F2, F3, orange key are the key for the enter
3. The F1, F2, F3 in “Choose Scan key” do only focus on the Focus Scanning, and unrelated to specific demo.

3.8RFID(optional)

If the phone has RFID module, open “RC633-RFID” application, choose



a protocol. Place a Mifare One card to the reader range, click “Search”, if Status Bar display the card type and id, then click “Auto” will read and list all the blocks of the card(if the card don’t encrypted). More information about this demo and develop code please contact the phone manufacturer to acquire.

4.SPECIAL FEATURES CUSTOM INSTRUCTIONS

This phone has many reserved port to meet the customization. It can connect with RS232, I2C, RS485 and other interface's peripherals or some function modules. Please contact the phone manufacturer to get more information.

5.NORMAL MODEL

MODEL	SPECIFICATION
MT02A-S MT02A Standard	Base product configuration BT/GPS/GPRS/WIFI/3100mA battery/3.2" LCD/WCDMA/charger
MT02A-C5M 5M Auto Focus camera	Base+auto focus camera 5M
MT02A-NL 1D Infrared barcode scanner	Base+newland EM1300, support Code128, EAN-13, EAN-8, Code39, UPC-A, UPC-E, Codabar, Interleaved 2 of 5, ISBN/ISSN, Code 93
MT02A-NL2D 1D&2D barcode scanner	Base+EM3000 1D&2D barcode scanner /Hardware decoding
MT02A-SY 1D Laser scanning	Base+SYMBOL SE955
MT02A-R6 RFID	Base+HF RFID module 13.56M, R6-14443/15693
MT02A-NL-R6 1D Infrared barcode scanner RFID	Base+newland EM1300+ HF RFID module
MT02A-SY-R6 1D Laser scanning RFID	Base+SYMBOL SE955+ HF RFID module

MT02A-N43 Honeywell N4313 1D Laser scanning	Base+Honeywell N4313
MT02A-SE45SR Symbol SE4500SR scanner	Base+ Symbol SE4500SR