

**Standard Operations Procedure
For
Dialogue Technology Corporation**

FlyBook A33i Notebook PC

Battery Calibration

Dialogue Technology Corporation

**10F, No. 196, Sec. 2, Jungshing Rd., Shindian City,
Taipei 231, Taiwan, R.O.C.**


Tel : +886 2 89115121

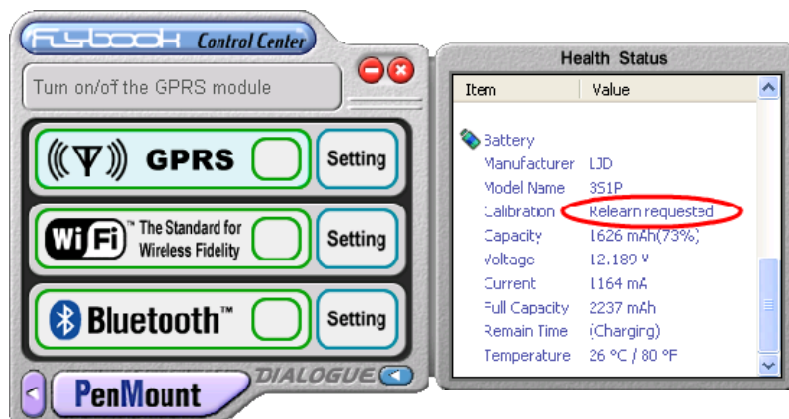
Fax: +886 2 89116151

- ☆ **Before you execute Battery Calibration , please plug in the DC-in adapter to the DC-in jack first .**

Check Battery State:

Please check the battery state first , you can use the steps below :

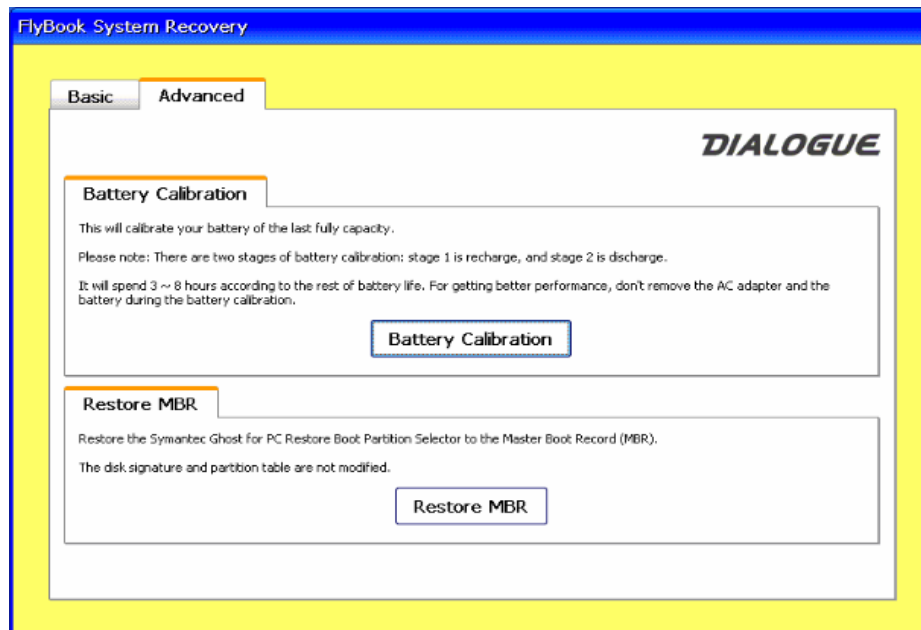
1. Double click the [FlyBook Center] icon in the system tray. The FlyBook Control Center window appears.
2. Click the  button , the [Health Status] window appears.



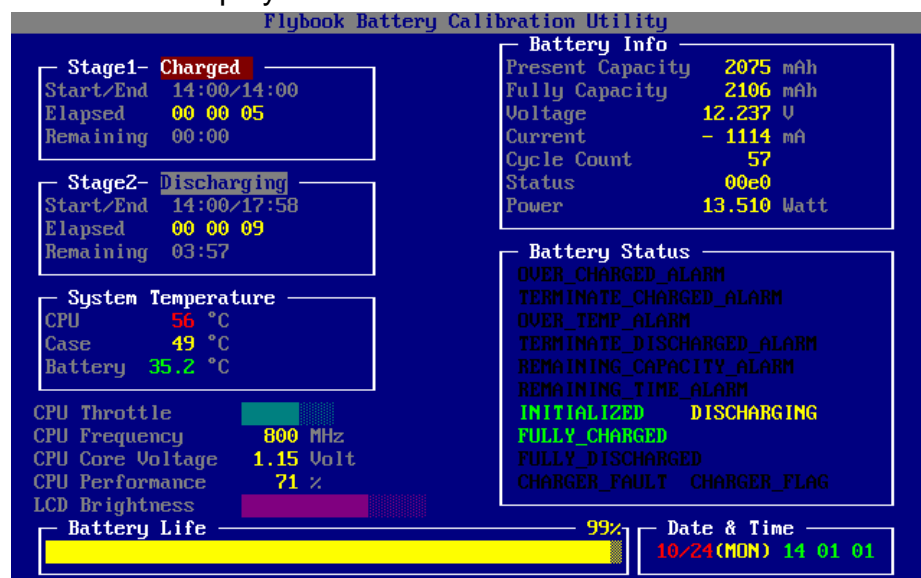
3. If the [Calibration] column displays [Relearn requested] message , the battery need to calibration.
4. We also suggest you execute the Battery Calibration every quarter.

Operation Procedure:

1. Stop and close all programs , then restart the system.
2. When [Hit F9] strings is display at upper-left corner of the display , press “F9” key. The [FlyBook System Recovery] window (shown below) will be displayed on the screen.



- Press “→” key to move the focus position to [Advance] section , then press “Tab” key to change the focus position to [Battery Calibration] button , and then press “Enter” key to start calibration. The [FlyBook Battery Calibration Utility] window will be displayed on the screen.



- When the [Battery calibration completed! Press <ESC> to exit] message displayed on the screen. Press the “ESC” key back to [Advance] section , then press “Tab” key to change the focus position to [Reboot] button. Press “Enter” key to reboot the system.