

Wireless 802.11g/b USB Stick



User Manual

Version 1.0

No part of this documentation may be reproduced in any form or by any means or used to make any derivative work (such as translation, transformation, or adaptation) without written permission from the copyright owner.

All the other trademarks and registered trademarks are the property of their respective owners.

Statement of Conditions

We may make improvements or changes in the product described in this documentation at any time. The information regarding to the product in this manual are subject to change without notice.

We assume no responsibility for errors contained herein or for direct, indirect, special, incidental, or consequential damages with the furnishing, performance, or use of this manual or equipment supplied with it, even if the suppliers have been advised of the possibility of such damages.

Electronic Emission Notices

This device complies with Part 15 of the FCC Rules. Operation is subject to the following two conditions:

- (1) This device may not cause harmful interference.
- (2) This device must accept any interference received, including interference that may cause undesired operation.

FCC INFORMATION

The Federal Communication Commission Radio Frequency Interference Statement includes the following paragraph:

The equipment has been tested and found to comply with the limits for a Class B Digital Device, pursuant to part 15 of the FCC Rules. These limits are designed to provide reasonable protection against harmful interference in a residential installation. This equipment generates, uses and can radiate radio frequency energy and, if not installed and used in accordance with the instruction, may cause harmful interference to radio communication. However, there is no guarantee that interference will not occur in a particular installation. If this equipment does cause harmful interference to radio or television reception, which can be determined by turning the equipment off and on, the user is encouraged to try to overcome the interference by one or more of the following measures:

- Reorient or relocate the receiving antenna.
- Increase the separation between the equipment and receiver.
- Connect the equipment into an outlet on a circuit different from that to which the receiver is connected.
- Consult the dealer or an experienced radio/TV technician for help.

The equipment is for home or office use.

R&TTE Compliance Statement

This equipment complies with all the requirements of the Directive 1999/5/EC of the European parliament and the council of 9 March 1999 on radio equipment and telecommunication terminal Equipment and the mutual recognition of their conformity(R&TTE).

The R&TTE Directive repeals and replaces in the directive 98/13/EEC. As of April 8, 2000.

IMPORTANT NOTE

FCC RF Radiation Exposure Statement: This equipment complies with FCC RF radiation exposure limits set forth for an uncontrolled environment. **This device has been tested for compliance with FCC RF Exposure (SAR) limits in typical laptop configurations** and This Transmitter must not be co-located or operating in conjunction with any other antenna or transmitter.

Caution: Changes or modifications not expressly approved by the party responsible for compliance could void the user's authority to operate the equipment.

Table of Contents

INTRODUCTION	1
1.1 Features.....	1
1.2 Package Contents	1
1.3 System Requirements	1
1.4 Your Wireless 802.11g/b USB Stick	2
INSTALLATION OF THE WIRELESS 802.11g/b USB STICK	3
2.1 Installation Procedures	3
2.2 Installation Notes - Windows XP	6
2.3 Verifying a Successful Installation	8
WLAN-54G USB CONFIGURATION TOOL BASICS	10
3.1 Tray Icon	10
3.2 Right-Click Menu of the Tray Icon.....	10
<i>Wireless Radio On</i>	10
<i>Wireless Radio Off</i>	11
<i>Remove Status Icon</i>	11
<i>Wireless Network Status</i>	11
<i>Advanced Configuration</i>	11
<i>WEP Encryption</i>	11
<i>IBSS Channel</i>	11
<i>Country/Domain</i>	11
<i>Version Information</i>	11
3.3 Configuration Tool Basics	12
<i>The Status Tab</i>	12
State	13
Current Tx Rate	14
Current Channel	14
Throughput (bytes/sec).....	14
Link Quality	14
Signal Strength	14
<i>The Configuration Tab</i>	14
Profile Name	15
Network Name	15
Network Type	15
Peer-to-Peer Channel	16
Transmit Rate	16
<i>The Encryption Tab</i>	16
Encryption (WEP security).....	17

Create Keys Manually	17
Use WEP Key	17
Create Keys with Passphrase.....	17
<i>The Site Survey Tab</i>	18
<i>The IBSS Tab</i>	18
<i>The Domain Tab</i>	19
802.11d Support	19
Countries/Domains.....	20
<i>The About Tab</i>	20
Network Driver	21
Configuration Utility	21
NIC Firmware	21
3.4 The Advanced Properties Tab.....	21
Authentication TYPE	23
Configuration Profile.....	23
Nitro Mode	23
Power Save Mode.....	23
WINDOWS XP WIRELESS ZERO CONFIGURATION TOOL	25
4.1 To Connect an Available Network via Wireless Zero Configuration	25
4.2 To Configure the Wireless Networks Properties	25
4.3 To Access to Certain Wireless Network Type	28
APPENDIX A: TROUBLESHOOTING	30
The Wireless 802.11g/b USB Stick Does Not Work Properly	30
Disable the Wireless 802.11g/b USB Stick	30
Upgrade the Configuration Tool and the Stick's Driver	30
Uninstall WLAN-54G USB Configuration Tool and the Stick's Driver.....	30
APPENDIX B: SPECIFICATIONS.....	33

List of Figures

FIGURE 1.4-1: WIRELESS 802.11g/b USB STICK	2
FIGURE 1.4-2: ROTATE THE USB CONNECTOR	2
FIGURE 2.1-1: THE FOUND NEW HARDWARE WIZARD DIALOG BOX	3
FIGURE 2.1-2: THE STARTUP WINDOW	4
FIGURE 2.1-3: THE WELCOME TO THE INSTALLSHIELD WIZARD WINDOW	4
FIGURE 2.1-4: THE WINDOWS XP SYSTEM COMPATIBILITY TESTING WARNING MESSAGE BOX	5
FIGURE 2.1-5: THE INSTALL FINISHED SCREEN	5
FIGURE 2.1-6: THE MESSAGE BOX OF INSERT DISK IN WINDOWS 98 SYSTEM	6
FIGURE 2.2-1: THE WLAN-54G USB CONFIGURATION TOOL TRAY ICON	6
FIGURE 2.2-2: THE WIRELESS SETTINGS DIALOG BOX	6
FIGURE 2.2-3: THE WIRELESS NETWORK CONNECTION STATUS DIALOG BOX	7
FIGURE 2.2-4: THE WIRELESS NETWORK CONNECTION PROPERTIES DIALOG BOX	7
FIGURE 2.3-1: THE DEVICE MANAGER DIALOG BOX	9
FIGURE 3.2-1: RIGHT-CLICK MENU OF THE TRAY ICON	10
FIGURE 3.3-1: THE WIRELESS SETTINGS CONFIGURATION INTERFACE	12
FIGURE 3.3-2: THE STATUS TAB	13
FIGURE 3.3-3: THE CONFIGURATION TAB	15
FIGURE 3.3-4: THE ENCRYPTION TAB	17
FIGURE 3.3-5: THE SITE SURVEY TAB	18
FIGURE 3.3-6: THE IBSS TAB	19
FIGURE 3.3-7: THE DOMAIN TAB	19
FIGURE 3.3-8: THE ABOUT TAB	20
FIGURE 3.4-1: THE DEVICE MANAGER DIALOG BOX	22
FIGURE 3.4-2: THE ADVANCED TAB	22
FIGURE 4-1: THE WIRELESS NETWORK CONNECTION ICON	25
FIGURE 4.1-1: THE CONNECT TO WIRELESS NETWORK DIALOG BOX	25
FIGURE 4.2-1: THE CONNECT TO WIRELESS NETWORK DIALOG BOX	26
FIGURE 4.2-2: THE WIRELESS NETWORK CONNECTION PROPERTIES DIALOG BOX	26
FIGURE 4.2-3: THE WIRELESS NETWORK PROPERTIES DIALOG BOX	27
FIGURE 4.2-4: WEP SETTINGS	28
FIGURE 4.2-5: SETTING UP WIRELESS NETWORK CONFIGURATION	28
FIGURE 4.3-1 THE ADVANCED DIALOG BOX:	29
FIGURE 5-1: THE WLAN-54G USB CONFIGURATION TOOL UNINSTALL COMMAND	31
FIGURE 5-2: THE WLAN-54G USB CONFIGURATION TOOL REMOVAL WARNING MESSAGE	31
FIGURE 5-3: THE UNINSTALL FINISHED SCREEN	32

INTRODUCTION

Being five times faster than the speed of IEEE802.11b compliant devices, the innovative 802.11g standard lets the wireless network become incredibly easier and faster (up to 54Mbps) than ever. Your Wireless 802.11g/b USB Stick will bring you into such a high-speed network sphere. This document describes how to install your Wireless 802.11g/b USB Stick, which aims to let your computer communicate with 802.11 networks quickly and seamlessly. Wireless LAN is local area networking without wires, which utilize the radio frequency technology to transmit and receive data between PCs or other networked devices. Wireless LAN is able to configure either peer-to-peer networks, which is also known as Ad-hoc mode or IBSS (Independent Basic Service Set), or infrastructure networks. The former is suitable for small or temporary peer-to-peer configurations, and the later is offering fully distributed data connectivity via AP (Access Point), which allows users to roaming around.

To obtain most benefits your Wireless 802.11g/b USB Stick provides, please read this manual carefully before using it.

1.1 Features

With the Wireless 802.11g/b USB Stick, you can

- ❑ establish a wireless connection without the hassles and cost of cabling
- ❑ configure and access Ad-Hoc or Infrastructure mode networks
- ❑ utilize up to 128-bit WEP encryption
- ❑ enjoy high-speed data transfer rate up to 54 Mbps
- ❑ employ automatic data rate switching which optimized the reliability, throughput and connectivity quality
- ❑ possess the network's range up to 100 meters indoor and 400 meters outdoor
- ❑ monitor and configure the network via freely supplied friendly-interfaced utility – **WLAN-54G USB Configuration Tool**

1.2 Package Contents

Before starting the installation, please make sure the package you purchased includes the following items:

- * One Wireless 802.11g/b USB Stick
- * One Setup Wizard CD with User Manual
- * One Quick Installation Guide

If any items listed above is missing or damaged, please contact your distributor.

1.3 System Requirements

To ensure your Wireless 802.11g/b USB Stick to properly work on your computer, your system has to meet following requirements:

- * 32 MB RAM or above
- * One CD-ROM drive
- * 300 MHz processor or higher
- * Microsoft Windows 98/98se ME, 2000 or XP operating system
- * One USB 2.0 port

1.4 Your Wireless 802.11g/b USB Stick

Your Wireless 802.11g/b USB Stick should be located in the USB 2.0 port of your computer, and it looks like the following picture:



Figure 1.4-1: Wireless 802.11g/b USB Stick

To improve the signal transmitting quality and to overcome certain space limitations, Wireless 802.11g/b USB Stick allows you to twist and rotate not only the body, but also the USB connector freely according to your needs.



Figure 1.4-2: Rotate the USB Connector

INSTALLATION OF THE WIRELESS 802.11g/b USB STICK

It's free and easy for you to install your Wireless 802.11g/b USB Stick and the attached software – **WLAN-54G USB Configuration Tool**. Simply with a few clicks of the mouse, you will succeed the installation.

2.1 Installation Procedures

To have the Wireless 802.11g/b USB Stick operated appropriately, please read and go along with the step-by-step instructions below carefully. Here we take the installation on Windows XP operating system as the standard flow. Therefore, the flow differences of installing the stick on other versions of Windows have been highlighted under the specified steps.

- a) Plug your Wireless 802.11g/b USB Stick into a USB 2.0 port on your PC.
- b) Your system will detect the device, and the **Found New Hardware Wizard** dialog box will appear. Choose **Cancel** to proceed.

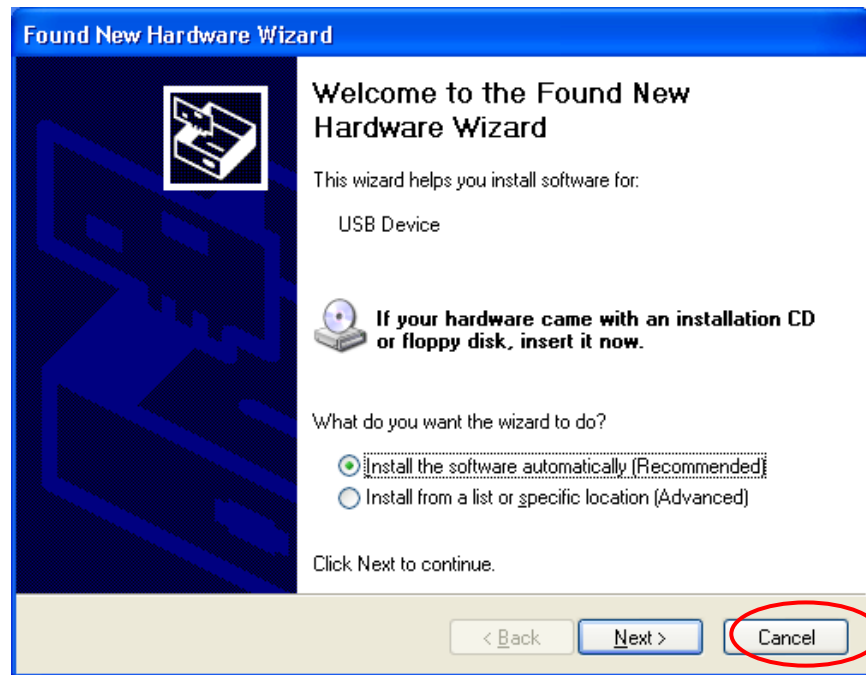


Figure 2.1-1: The **Found New Hardware Wizard** Dialog Box

- c) Insert the supplied Setup CD to your CD-ROM drive, and the Setup Wizard will run automatically. If it does not, please manually execute **Autorun.exe** in the CD's directory.
- d) From the prompted start-up screen, choose **Install Driver** to begin the installation.



Figure 2.1-2: The Startup Window

- e) Click **Next** in the **Welcome to the InstallShield Wizard** window to proceed. The system will start to copy the drivers found.

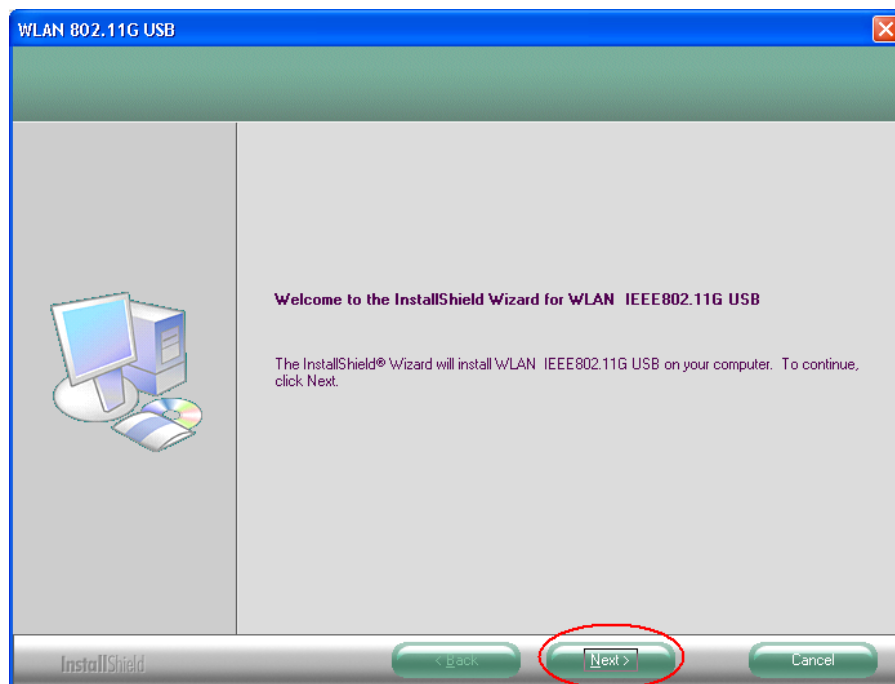


Figure 2.1-3: The **Welcome to the InstallShield Wizard** Window

- f) Windows will notify you with message box below that the driver **has not passed the Windows Logo testing**. Because the USB Stick has been tested to work with Windows XP, please choose **Continue Anyway** to ignore it.

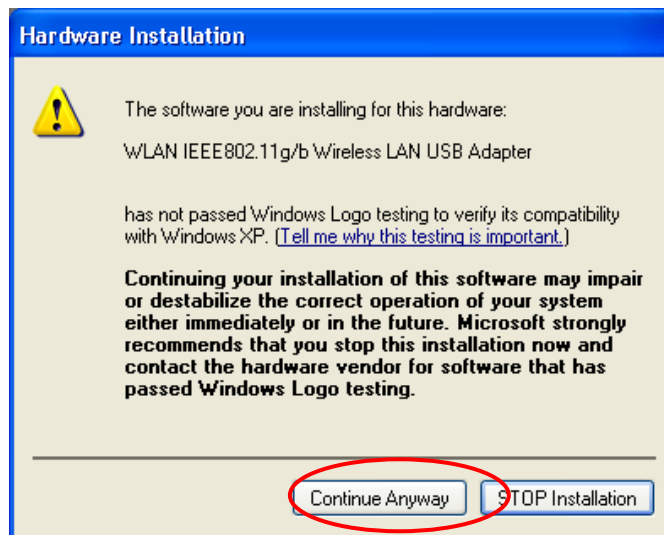


Figure 2.1-4: The Windows XP System Compatibility Testing Warning Message Box

- g) On the **Install Finished** screen, click **Finish** to complete the installation. Note that when you are running Win98/98SE/ME, the computer will restart automatically after you click the **Finish** button.

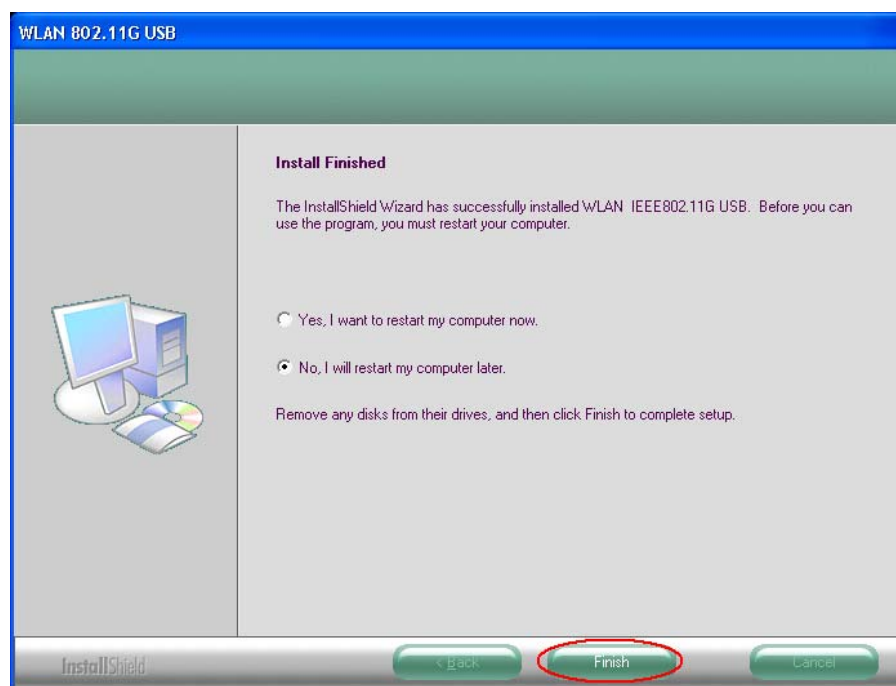


Figure 2.1-5: The **Install Finished** Screen

Note: It is necessary for Win98/98se/ME users to restart your computer for completing the installation before starting operating the device.

Note: For Win 98 users, the system will ask for Windows 98 CD-ROM after rebooting. Please replace the supplied CD with the required one and click **OK** to proceed. Then you can follow the on-screen instructions to complete the installation.

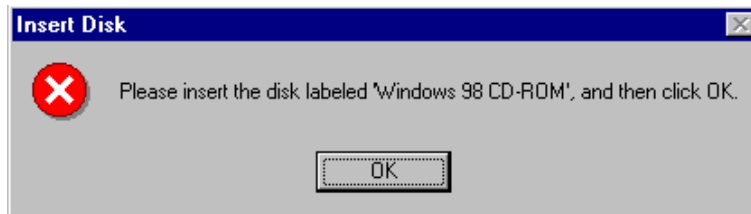


Figure 2.1-6: The Message Box of **Insert Disk** in Windows 98 System

Now you shall find the **WLAN-54G USB Configuration Tool** tray icon, , appeared in the system tray. The installation is entirely finished at the moment.

Double-click the icon is able to launch the application and open the **Wireless Settings** dialog box, in which you may freely arrange your network connection afterwards.

For more details about **WLAN-54G USB Configuration Tool**, please refer to [WLAN-54G USB Configuration Tool Basics](#) in this manual.

2.2 Installation Notes - Windows XP

If your system is running Windows XP, you shall find four tabs displayed in the **Wireless Settings** configuration interface after you've followed the instructions above and successfully installed the drivers and utility. However, normally, the dialog box should be consisted of seven tabs. This is because Windows XP has its built-in configuration tools – **Wireless Zero Configuration** to assist you in wireless networking activities. It is recommended to utilize the attached **WLAN-54G USB Configuration Tool** to enjoy more benefits it will bring.

Thus, to employ your **WLAN-54G USB Configuration Tool** under Windows XP, please proceed to the following procedures to switch the default settings of **Wireless Zero Configuration** to **WLAN-54G USB Configuration Tool**.

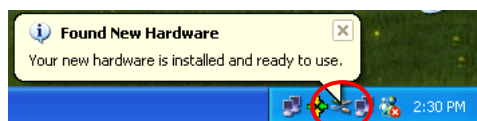


Figure 2.2-1: The **WLAN-54G USB Configuration Tool** Tray Icon

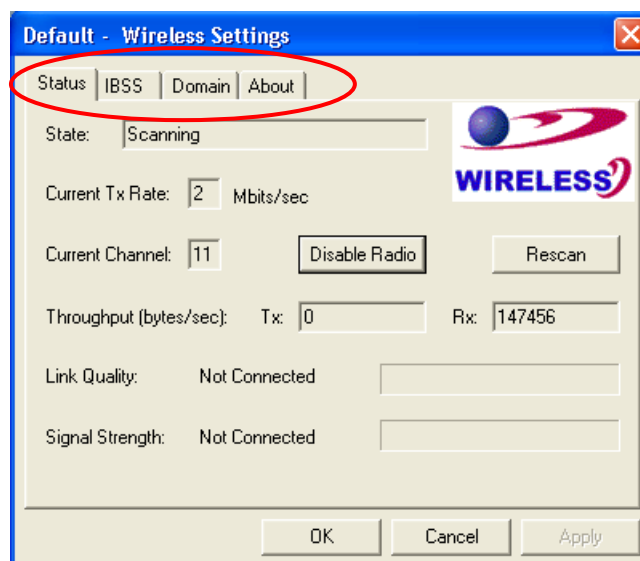


Figure 2.2-2: The **Wireless Settings** Dialog Box

- a) Double-click the **Network Connections** icon at the task bar to open the **Wireless Network Connection Status** dialog box, and then select **Properties**.

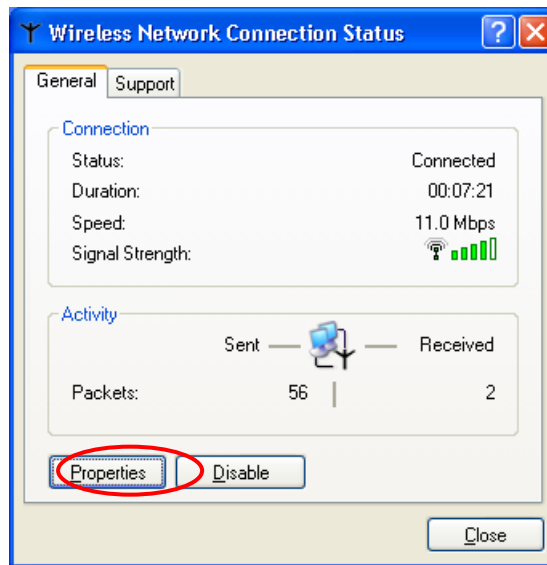


Figure 2.2-3: The **Wireless Network Connection Status** Dialog Box

- b) Open the **Wireless Networks** menu, and remove the tick from the **Use Windows to configure my wireless network settings** checkbox.

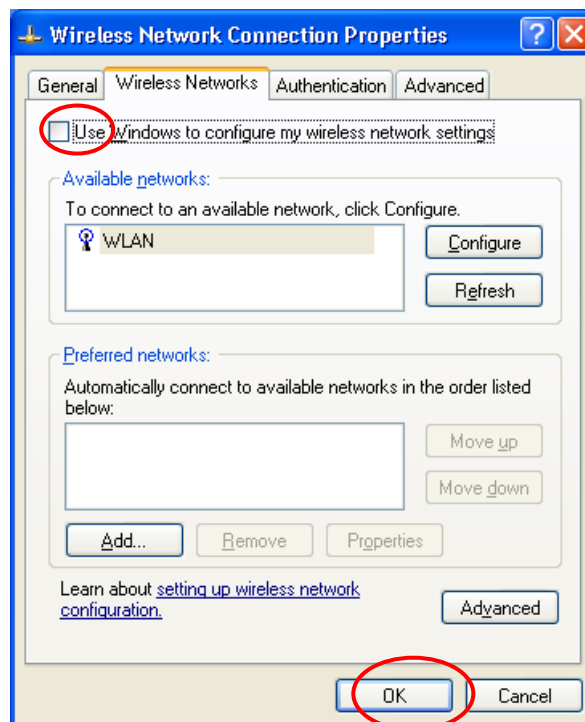


Figure 2.2-4: The **Wireless Network Connection Properties** Dialog Box

- c) Click **OK**. Now, you have successfully disabled the **Wireless Zero Configuration**.

To monitor and configure the network via **WLAN-54G USB Configuration Tool**, double-click its tray icon, and you shall find seven tabs contained in the popped up configuration interface this time.

For more information on **WLAN-54G USB Configuration Tool**, please refer to the chapter: [WLAN-54G USB Configuration Tool Basics](#) below.

Note: If you wish to configure networks through Windows XP's built-in configuration tools – **Wireless Zero Configuration**, please refer to the **Windows XP Wireless Zero Configuration Tool** chapter.

2.3 Verifying a Successful Installation

To confirm that the Wireless 802.11g/b USB Stick is properly installed, please follow the procedures below.

1. Right-click **My Computer** desktop icon and choose **Properties** from the opened menu.
2. In the **System Properties** dialog box, select the **Hardware Device** tab, and then click the **Device Manager** button.
3. In the opened window, expand **Network adapters** to find the USB Stick – **WLAN IEEE802.11g/b Wireless LAN USB Adapter**. Right-click over the item and choose **Properties**.
4. Select the **General** tab from opened dialog box, find the descriptions under the **Device Status** pane to check if the USB Stick is working properly. However, if there's an error message such as a red or yellow icon attached beside, please uninstall the stick, restart your system and go through the installation procedures again. (About uninstalling the stick, please refer to the **Appendix A** in the manual)

The following picture indicates a successful installation of the Wireless 802.11g/b USB Stick.

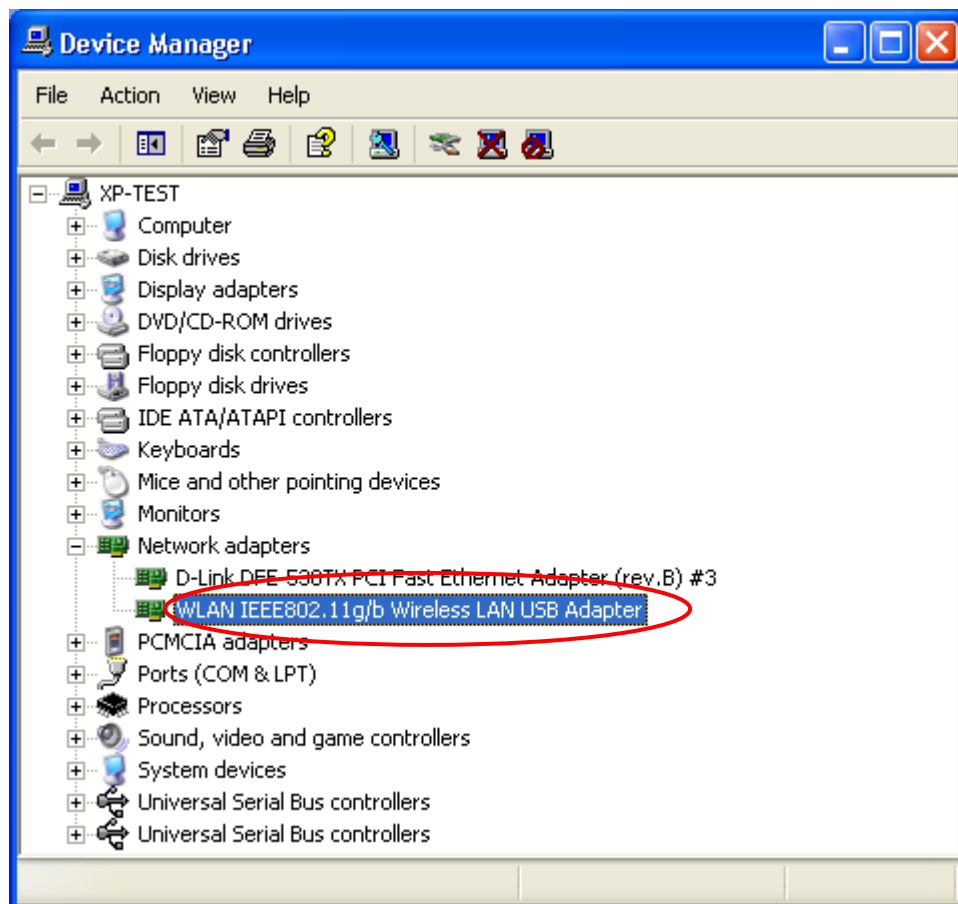




Figure 2.3-1: The **Device Manager** Dialog Box

WLAN-54G USB CONFIGURATION TOOL BASICS






After successfully installing the drivers and utility for your Wireless 802.11g/b USB Stick on your computer, you may see the **WLAN-54G USB Configuration Tool** icon, , displayed in the system tray. To configure your USB Stick, double-click the icon to open the **Wireless Settings** dialog box, in which seven tabs are contained. Each of them proffers different functions.

In this chapter, four topics are offered: **Tray Icon**, **Right-Click Menu of the Tray Icon**, **Program Controls**, and **The Advanced Properties Tab**. Please refer to the preferred topic to obtain more information and enjoy vast advantages **WLAN-54G USB Configuration Tool** brings.

3.1 Tray Icon

As long as you finish installing **WLAN-54G USB Configuration Tool** on your computer system, you will see its icon, , shown at the right bottom corner of your screen. When you move the mouse cursor over it, the information on the current link quality is provided in the tips.

Furthermore, the color of the icon varies with the current state of your network connection. Check the list below to learn the definition of each color.

Icon	Definition
	Excellent Link Quality
	Data Frame Errors – Check WEP Settings
	Fair Link Quality
	Poor Link Quality or Not Linked
	Radio Off

Note: The blue icon indicates that you might have entered incorrect WEP keys. To solve the problems, choose the **Configuration** tab in the **Wireless Settings** dialog box to correct the keys for encryption.

3.2 Right-Click Menu of the Tray Icon

Right-clicking the **WLAN-54G USB Configuration Tool** icon in the system tray will open a menu as the following picture:



Figure 3.2-1: Right-Click Menu of the Tray Icon

Check the descriptions below to obtain detailed information about each command in this menu.

Wireless Radio On

Choose **Wireless Radio On** command to receive the radio frequency signals.

Wireless Radio Off

Choosing **Wireless Radio Off** command will stop receiving the radio frequency signals.

Remove Status Icon

If you do not wish to have the **WLAN-54G USB Configuration Tool** icon displayed in the system tray, please choose this command. Therefore, once the computer is rebooted, the icon will reappear. Clicking **Start** on the taskbar, choose **Program** from the menu, and then point to **WLAN-54G USB Configuration Tool** in the submenu of **WLAN-G TOOLS** can also launch the utility anytime.

Wireless Network Status

Choose this command to launch the **Status** tab of the **Wireless Settings** dialog box. For more details about the tab, please refer to **The Status Tab** in the **Configuration Tool Basics** section below.

Advanced Configuration

Choose this command to launch the **Configuration** tab of the **Wireless Settings** dialog box. Please refer to **The Configuration Tab** in the **Configuration Tool Basics** section below to gain more information about this tab.

WEP Encryption

Choose this command to launch the **Encryption** tab of **Wireless Settings** dialog box. This tab offers you a number of options to maintain the secure management in a wireless LAN environment. See the explanations in **The Encryption Tab** under the **Configuration Tool Basics** section below for more details.

IBSS Channel

Choosing this command will launch the **IBSS** tab of the **Wireless Settings** dialog box. To obtain more information about this tab, please refer to **The IBSS Tab** in the **Configuration Tool Basics** section below.

Country/Domain

Choosing this command will launch the **Domain** tab of the **Wireless Settings** dialog box. Detailed information about this tab is presented in **The Domain Tab** of the **Configuration Tool Basics** section.

Version Information

Choosing this command will launch the **About** tab of the **Wireless Settings** dialog box. The **About** tab reveals general information on your Wireless 802.11g/b USB Stick, including the release version of driver, the **WLAN-54G USB Configuration Tool** and the USB network adapter's MAC Address.

3.3 Configuration Tool Basics

When you double-click the **WLAN-54G USB Configuration Tool** tray icon, the **Wireless Settings** dialog box will be prompted as the picture shows below. You may also launch this dialog box via clicking **Start** on the taskbar, choosing **Program** from the menu, and then pointing to **WLAN-54G USB Configuration Tool** from the submenu of **WLAN-G TOOLS**.

The application is a window-based program, which is consisted of seven tabs, including **Status**, **Configuration**, **Encryption**, **Site Survey**, **IBSS**, **Domain**, and **About**. The following figure displays the **Wireless Settings** dialog box.

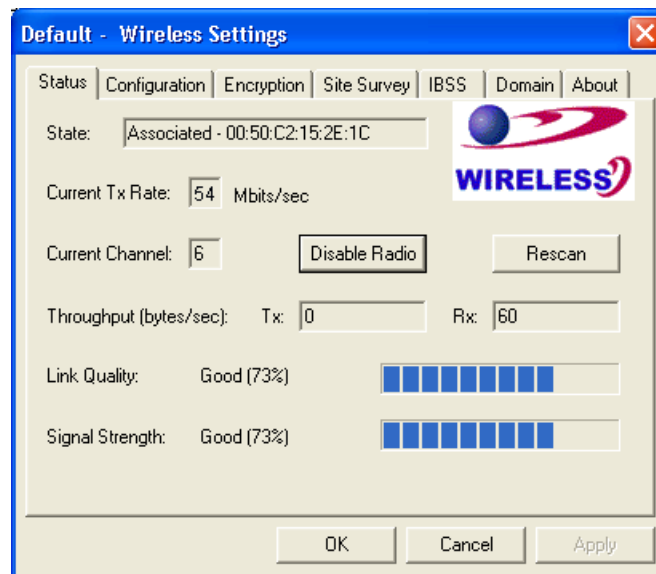


Figure 3.3-1: The **Wireless Settings** Configuration Interface

Check the desired items below to obtain more details about these tabs.

The Status Tab

In the **Wireless Settings** dialog box, click the **Status** tab to appear the following display. Here presents the status of your current connection. To close the window, click **OK**.

Note: Choosing the **Wireless Network Status** command from the right-click menu of **WLAN-54G USB Configuration Tool** tray icon will launch this tab too.

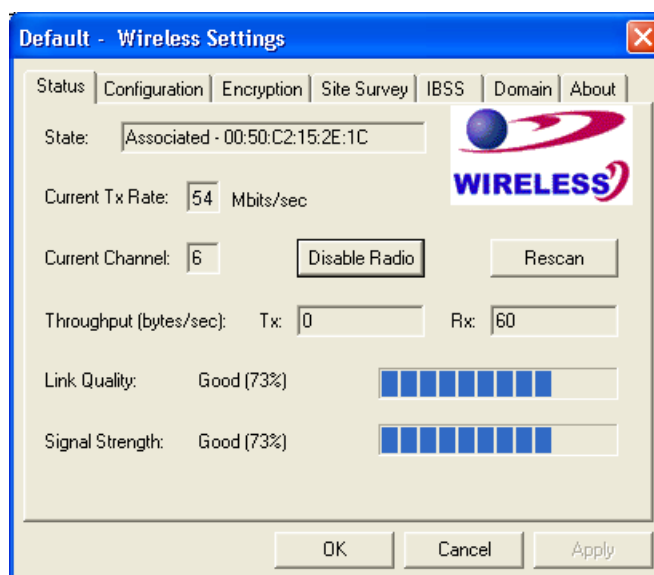


Figure 3.3-2: The **Status** Tab

Note: The texts before "Wireless Settings" in the caption bar of the dialog box is the profile name of current connection. Thus, the caption contexts vary according to the connectivity at the given time. From the above picture, the associated profile is named "**Wireless**". For more information about profiles, please refer to the "**The Configuration Tab**" section in the manual.

The general information on the status of currently connected entry is presented. You may want to click the **Rescan** button to reinitiate the scanning process and update the status. Later the information displayed in the window will be renewed. If you wish to stop the networking connection, click the **Disable Radio** button to stop scanning. Meanwhile, the **State** field will indicate that the radio has been stopped and the remaining areas under this tab display either a zero or **Not Applicable**. However, if you are already in the disabled radio mode, you will find the **Enable Radio** button here instead. Click **Enable Radio** to regain the link then.

State

Here displays the MAC Address of the current associated entry, which could be a connected access point in the Infrastructure mode or computers joining in the Peer-to-Peer network.

AdHoc	The WLAN USB stick is operating in Peer-to-Peer mode. The virtual MAC address used by computers participating in the specified Ad-Hoc network will also be displayed at the same time.
Associated	The WLAN USB stick is operating in Infrastructure mode. This field also shows the MAC address of the Access Point with which you are communicating.
Listening	Indicates that the adapter is listening on all allowed channels, but has not yet found a peer-to-peer or infrastructure network with which is able to associate.
Stopped	Radio has been stopped by clicking Disable Radio button
Scanning	The WLAN USB stick is scanning for transmissions by other wireless adapters on all channels.
Associating	The WLAN USB stick is in the process of associating with a network.

Not Associated

The WLAN USB stick has not found any network with which is able to associate.

Current Tx Rate

This feature indicates the transmission rate of the current connection.

Current Channel

Here reveals the current channel operated in the wireless network. Note that the channel number differs as the radio scans any available channels in the Infrastructure mode.

Throughput (bytes/sec)

This feature indicates the rates of transmitting (**Tx**) and receiving (**Rx**) data of your Wireless 802.11g/b USB Stick within a short period of time; thus, the values vary on a time basis.

Link Quality

Link Quality is based on the percentage of successfully transmitted or received signals of the associated access point beacon within a limited period. The higher the percentage, the better the link quality. The bar graph beside also provides a visual interpretation of the current link quality. It is noted that the **Link Quality** and **Signal Strength** features only apply to the Infrastructure mode. They are inapplicable in the Ad-Hoc mode since data will be transferred from many different computers.

Signal Strength

You may learn the received signal strength measurement of the baseband processor of the Beacon signal from the **Signal Strength** bar beside, and it's also presented in terms of percentage. As the signal gets stronger, the signal percentage rate gets higher. It is noted that the **Signal Strength** and **Link Quality** features only apply to the Infrastructure mode. They are inapplicable in the Ad-Hoc mode since data will be transferred from many different computers.

The Configuration Tab

Click this tab to edit different profiles for different network configurations. When finish changing the settings, please click **Apply** to perform the new configuration at last.

Note: Choosing the **Advanced Configuration** command from the right-click menu of **WLAN-54G USB Configuration Tool** tray icon will launch this tab too.

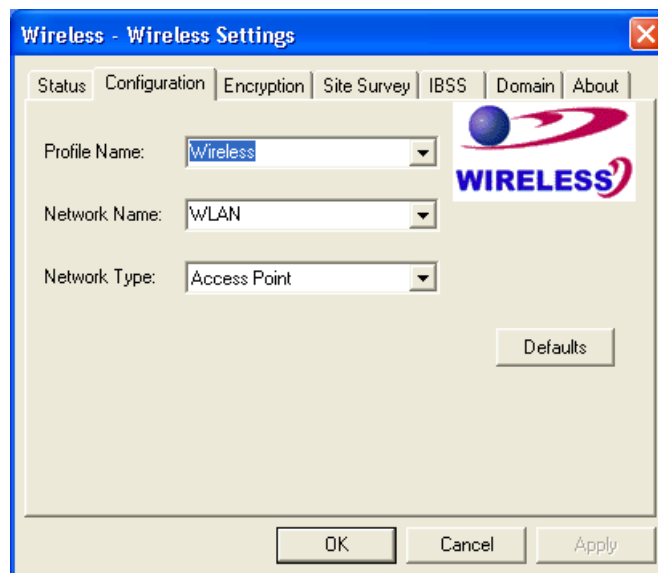


Figure 3.3-3: The **Configuration** Tab

Profile Name

A profile is a named set of operating parameters for your Wireless 802.11g/b USB Stick. By clicking the down arrow at the right of this item to display any available profiles. You may modify the values for chosen pre-defined profile. When you finish setting up the new changes, choose **Apply** to save the re-defined profile.

To identify a new profile, configure necessary settings in all tabs and then enter texts in the **Profile Name** field under **Configuration** tab. After clicking the **Apply** button, the new profile will be established with the parameters defined earlier. To switch between any existing profiles, click the arrow button at the right of the **Profile Name** field to open the pull-down menu and then select an intended one from it.

Note: You will have at least one profile named **Default**. When selecting any link from the list under the **Site Survey** tab, you have already automatically established a new profile for it under the **Configuration** tab.

Network Name

Network Name, also known as SSID (Service Set Identifier), must be unique to distinguish itself as a particular wireless network, while all wireless points in this network area share the same SSID. Type the identical SSID in the **Network Name** field to associate with access points or stations within the specified wireless LAN. To change the **Network Name**, highlight the texts in the box, edit a new SSID, and then click **Apply** to save the changes.

Network Type

Two network types are offered here: **Access Point** and **Peer-to-Peer**. Choose an intended type from the two options. The **Access Point** standing for the Infrastructure mode, allows you to communicate your computer with a wireless or wired networking devices via an access point. If you attempt to operate this mode, you must indicate the identical **Network Name** to make a communication with the intended access point. On the other hand, the **Peer-to-Peer** mode provides you with the so-called Ad-Hoc communication, which means each wireless-equipped

computers within a group is able to connect with each other as an independent wireless LAN without the use of an access point. Each station within this Ad-Hoc network has to possess the same **Network Name**.

Peer-to-Peer Channel

This command is only available while you are operating the **Peer-to-Peer** network type. Specify the operating radio frequency channel from the pull-down menu if you are intending to create a wireless network. If you are the client, just configure the SSID and click **Apply**. Note that the available channels differ from country to country, and the channel number must be the same between the entries/stations within the range, so that they can communicate with each other. While in the **Access Point** mode, the channel number would be the same as the associated access point. Thus, there's no need to manually set up the value.

Transmit Rate

This command allows you to indicate the rate of transferring data packets from the associated access point or any nodes within the range. There are four options for you: **Auto 1 or 2 Mb**, **5.5 Mb**, **11 Mb**, and **Fully Automatic**. Specify the rate from provided options according to the speed of your wireless network, or you may simply choose **Fully Automatic** to set the best available rate according to the received signal quality and the capabilities of the associated access point or station.

The Encryption Tab

Click the **Encryption** tab to define the encryption settings for a specific profile. It offers you various options concerning the so-called WEP (Wired Equivalent Privacy) to maintain the secure management in a wireless LAN environment. See the explanations below for more details, and click **Apply** to activate the new settings. To leave the window, click **OK**. To undo the new settings, select the **Cancel** button.

Note: Choosing the **WEP Encryption** command from the right-click menu of **WLAN-54G USB Configuration Tool** tray icon will launch this tab too.



Figure 3.3-4: The **Encryption** Tab

Encryption (WEP security)

If you choose **Disabled** from the pull-down list, you will have the wireless LAN USB stick communicated with all stations within the same networking community without any data encryption. Otherwise, two encryption methods are offered: **64 bit** and **128 bit** which you may select one which should be same as the AP or station you intend to connect with. Then, you can define the identical WEP keys to make a communication with the chosen access point or station.

Create Keys Manually

Once you set the **Encryption** type as **64 bit** or **128 bit**, you may choose to edit WEP keys manually or create them via the passphrase of your wireless network. If you choose the **Create Keys Manually** option, you may directly enter up to 4 WEP keys for use in WEP encryption. To generate the WEP keys, please define the key entry method as **Alphanumeric** or **Hexadecimal** (for hexadecimal characters, only digits 0-9 and letters A-F are valid) in advance. Then edit the texts in the blank fields below, from **Key 1** to **Key 4**, as the encryption codes. Note that these codes/keys shall be identical between the wireless nodes within same range and same access point. Check the table below to find valid key length of each encryption type:

	64 bit	128 bit
Alphanumeric	5 characters	13 characters
Hexadecimal	10 digits	26 digits

Use WEP Key

Indicate which WEP key you intend to apply to activate the WEP encryption from the pull-down menu. Make sure that the intended access point on the wireless network shares the same keys. By default, **Key 1** will be used.

Create Keys with Passphrase

Choose this command when the associated wireless network uses a passphrase to create WEP

keys. Enter the passphrase string in the **Passphrase** field to generate four encryption keys in the **Key** fields above. Note that only letters A-F are valid for the **Passphrase** feature.

Note: When entering the passphrase here, ensure that you have specified an accurate type of the **Encryption (WEP security)** above according to the associated agent's configuration. Otherwise, the inaccuracy will cause failure of performance.

After finish configuring the **Encryption** features, remember to click **Apply** to initiate the new settings.

The Site Survey Tab

First of all, while entering this tab, please do choose the **Rescan** button to reinitiate the scanning process and update the list. Later the result of scanning will be renewed and displayed. From the offered information, you may learn the general information on the status of current scan lines, including BSSID, SSID, signal strength, the channel number, WEP type, and network type.

In addition, to directly make an association with any site on the list, double-click the **BSSID** field of the intended entry, and you will be led to the **Status** tab then.

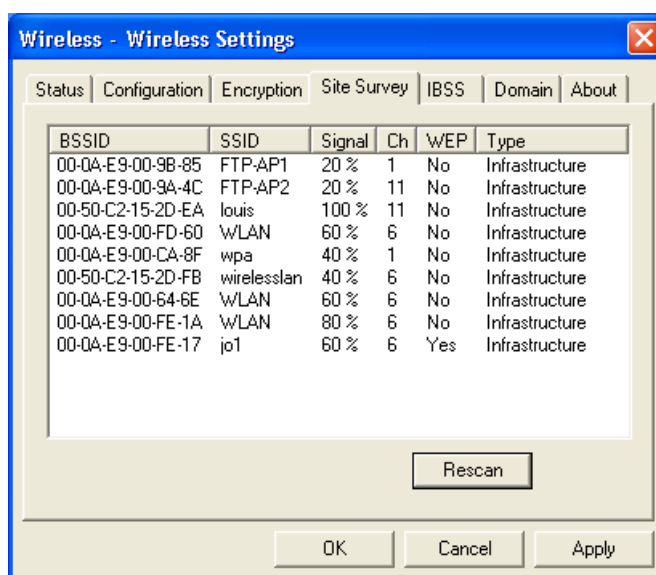


Figure 3.3-5: The **Site Survey** Tab

The IBSS Tab

If you are communicating with other stations via the IBSS (802.11 Ad-hoc mode) to form peer-to-peer networks, click the **IBSS** (Independent **B**asic **S**ervice **S**et) tab to specify an operating radio frequency channel from the pull-down list under the **IBSS Channel Selection** field.

Note: Choosing the **IBSS Channel** command from the right-click menu of **WLAN-54G USB Configuration Tool** tray icon will launch this tab too.

Note that the available channels differ from country to country, and the channel number must be the same between the entries/stations within the range, so that they can communicate with each other. Or you may simply click **Defaults** to automatically determine it with proper channel number. When done, click **Apply** to activate the new configuration.

On the other hand, while in the **Access Point** mode, you will find the channel number is the same

as the associated access point. Thus, there's no need to modify the value.

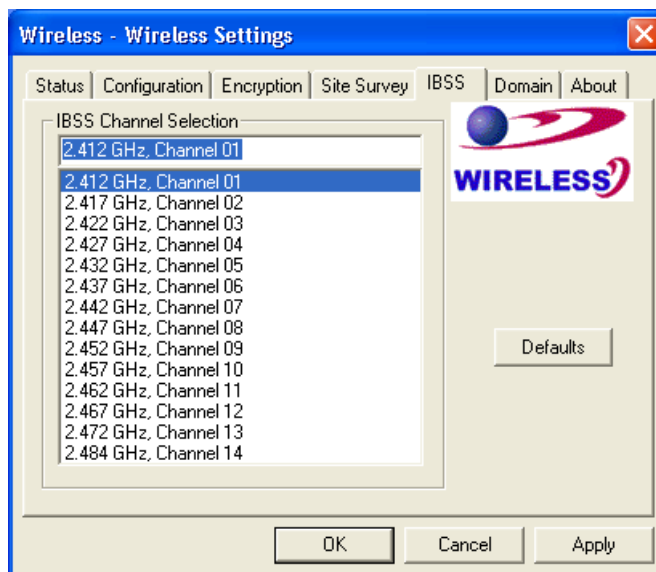


Figure 3.3-6: The **IBSS** Tab

The Domain Tab

While in the 2.4GHz range, the network operation may differ from country to country, or domain to domain. This is because the 802.11d protocol was established. To have the operation normally processed, choose the **Domain** tab to change relevant settings. Note that If you specify **Peer-to-Peer** as the network type, you must specify **None** in the **802.11d support** field.

Note: Choosing the **Country/Domain** command from the right-click menu of **WLAN-54G USB Configuration Tool** tray icon will launch this tab too.

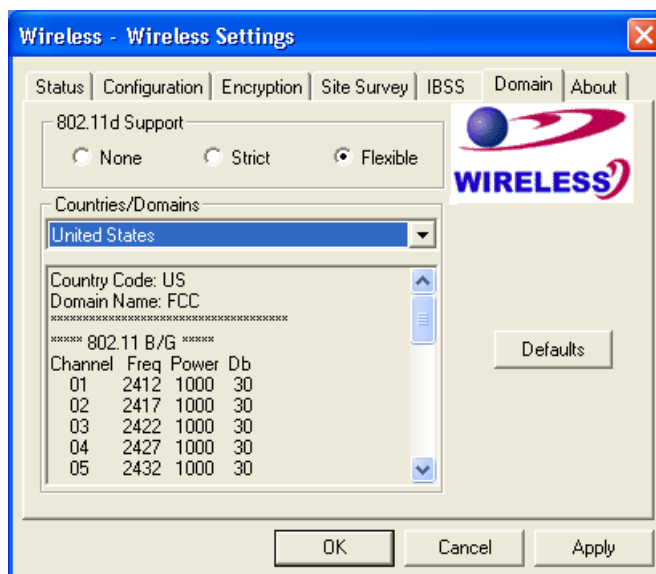


Figure 3.3-7: The **Domain** Tab

802.11d Support

802.11d Support lets you operate multi-country roaming. To automatically adjust regulatory domain while operating network in different countries, choose either **Strict** or **Flexible** according to your needs.

Choosing **Strict** will allow your WLAN USB stick to communicate with the access points that support 802.11d. On this occasion, the WLAN USB stick scans all communication channels for an access point, which provides information about the channels, frequencies, and power levels permitted in your location. Once it finds such an access point, the WLAN USB stick conforms its operations to these standards. The WLAN USB stick will not communicate with an access point that does not provide this information, nor will it join or create a peer-to-peer network.

On the other hand, if you choose **Flexible** in this field, your WLAN USB stick can communicate with any access point it finds. In this case, you must also choose the county in the **Countries/Domains** field to correspond to your location. The WLAN USB stick then searches for an access point that offers information about the channels, frequencies, and power levels permitted in your location. If it finds such an access point, the WLAN USB stick conforms its operations to these standards.

If you choose **None**, the task will be terminated.

Countries/Domains

If you choose **Flexible** above, go on defining the regulatory domain from the drop-down menu of this command according to the country you are located in. More detailed information about the defined country/domain will be listed below afterwards.

When you are done, remember to click **Apply** to let the new settings take effect.

The About Tab

This tab reveals general information on your wireless LAN USB stick, including the following items.

Note: Choosing the **Version Information** command from the right-click menu of **WLAN-54G USB Configuration Tool** tray icon will launch this tab too.

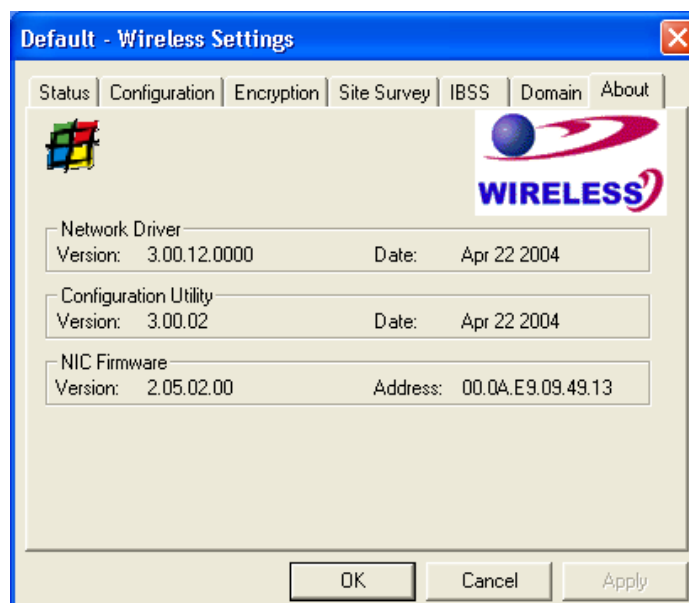


Figure 3.3-8: The **About** Tab

Network Driver

Displays the current version and released date of the Wireless 802.11g/b USB Stick's driver.

Configuration Utility

Displays the current version and released date of **WLAN-54G USB Configuration Tool**.

NIC Firmware

Displays the current NIC card firmware version and the MAC (Media Access Control) address of your wireless USB Stick. It is consisted of 12-digit hexadecimal numbers (48 bits in length) to identify your computer's physical address on the local area network.

3.4 The Advanced Properties Tab

The **Advanced Properties** tab provides access to configure the operating parameters for the network adapter, which are not controlled by but somehow effective to the configuration utility. These properties are accessed through the Windows' hardware device manager. The following steps describe how to access these properties under Windows XP. For Windows 2000, the details may differ slightly; consult your operating system documentation or your system administrator for details. Also, the properties that appear in the list displayed by the device manager may differ depending on the adapter installed in your computer.

To display these properties, complete the following steps:

1. Right-click the **My Computer** desktop icon and choose **Properties** from the opened menu.
2. Choose the **Hardware** tab in the **System Properties** dialog box, and click **Device Manager**.
3. In the opened window, expand **Network adapters** to find the USB Stick – **WLAN IEEE802.11g/b Wireless LAN USB Adapter**. Right-click over the item and choose **Properties** from the opened menu.

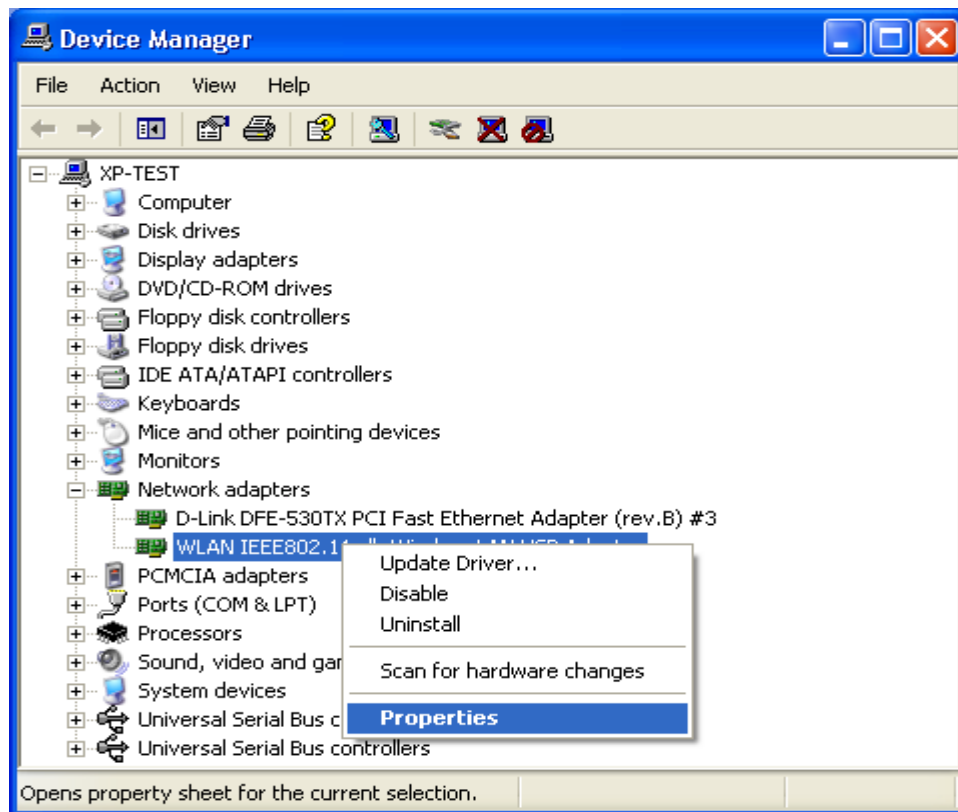


Figure 3.4-1: The **Device Manager** Dialog Box

4. When you click on the **Advanced** tab in the opened dialog box, a display similar to the following figure appears.

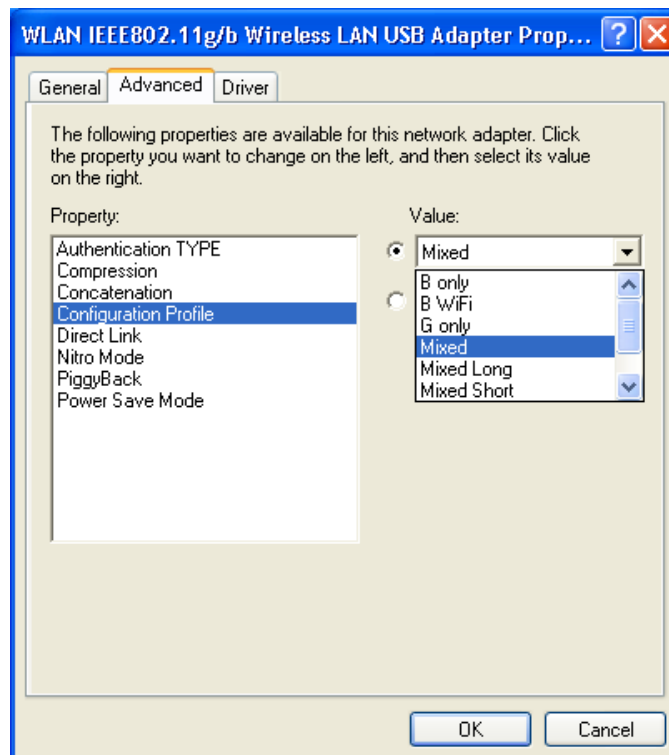


Figure 3.4-2: The **Advanced** Tab

You shall see the value for any of these properties by clicking over an item displayed in the **Property** field. If a value has been set for the property, it appears in the **Value** field on the right of the list. You may click to specify the **Value** settings from the offered drop-down list. Choosing **Not**

Present under the **Value** field will disable the value options of specified property.

The following texts explain the four properties in the **Property** list displayed by this tab, which are important and effective when operating the stick.

Authentication TYPE

Specify a pre-defined profile with standard parameters from here. The provided profiles include:

- ☐ **Based on WEP setting (Auto switching)** – switch automatically between **Must use Shared with WEP (Share key)** and **WECA Compliant (Open key)** for better security without missing any possibility of networking connections.
- ☐ **Must use Shared with WEP (Share key)** – limit the connection permission only when the devices communicate with same WEP keys. This provides a higher security.
- ☐ **WECA Compliant (Open key)** – open for all connective networks to access. This is an option of less security.

Configuration Profile

Specify a pre-defined profile with standard parameters from here. The provided profiles include:

- ☐ **B only** – for operation in 802.11b environments only
- ☐ **B WIFI** – for operation in 802.11b environments conforming to WiFi specifications
- ☐ **G only** – for operation in 802.11g environments only
- ☐ **Mixed** – for operation in either 802.11b or 802.11g environments
- ☐ **Mixed Long** – for long-range operation in either 802.11b or 802.11g environments
- ☐ **Test** – for operation under the widest variety of 802.11 conditions

Nitro Mode

This feature may increase data throughput over the WLAN and is particularly effective in mixed 802.11b/g environments. This property determines whether Nitro mode is enabled in your wireless USB Stick.

Power Save Mode

This property turns the Station Power Save feature on or off, or sets it to Auto. When in **Auto** mode, the station enters Power Save based on the battery condition (XP only) on the host. **Power Save Mode** decreases the amount of power consumed by the adapter by powering off the radio for short periods. Enabling **Power Save Mode** trades off performance for battery life.

- ☐ **Auto Dynamic** – specifies Disable mode when on AC power and Dynamic mode when on battery
- ☐ **Auto Maximum** – specifies Disable mode when on AC power and Maximum mode when on battery

Note: **Auto Dynamic** and **Auto Maximum** require NDIS 5.1 or later, typically available only on Windows XP.

- **Disabled** – specifies continuous access mode and is the default
- **Dynamic** – specifies a fast power saving mode that provides the best combination of performance and power usage
- **Maximum** – specifies the greatest power saving mode

As to the values of **Compression**, **Concatenation**, **Direct Link** and **PiggyBack** properties are only applying for engineering testing requirements. It's strongly recommended that you should leave these values as defaulted.

WINDOWS XP WIRELESS ZERO CONFIGURATION TOOL

As you have already known, Windows XP has its built-in configuration tools – **Windows XP Zero Configuration**, to assist you in some basic configurations of wireless network connection. The service starts right after the completion of the installation of Wireless 802.11g/b USB Stick, and you will find the icon automatically appears in your system tray like the following picture shows.



Figure 4-1: The **Wireless Network Connection** Icon

Please refer to the desired topics below to look for more details about utilizing your Wireless 802.11g/b USB Stick via **Wireless Zero Configuration**.

4.1 To Connect an Available Network via Wireless Zero Configuration

1. Double-click the **Wireless Network Connection** icon.
2. In the opened **Connect to Wireless Network** dialog box, the currently available networks are listed in the **Available networks** field. From the list, choose an item that you intend to associate with.
3. If the chosen entry requires a WEP encryption key and also automatically provides it, leave the **Network Key** field blank and then choose the **Connect** button to build the connection. Otherwise, you will need to manually enter the identical key in the **Network Key** field before clicking **Connect**.

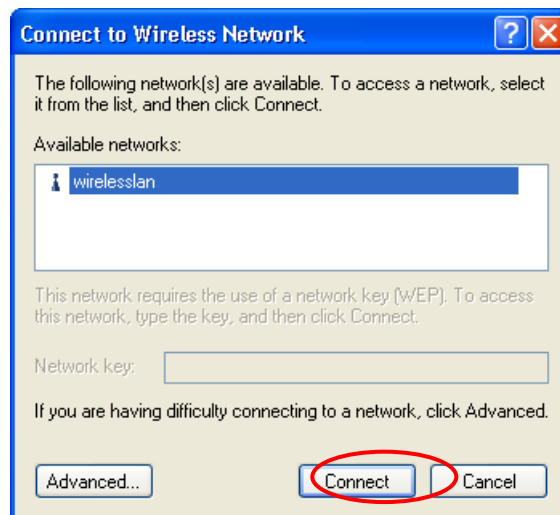


Figure 4.1-1: The **Connect to Wireless Network** Dialog Box

4. If the connection is established, there will be a pop-up message shown beside the **Wireless Network Connection** icon on the system tray. You could obtain the information on the status of connection from the message.

4.2 To Configure the Wireless Networks Properties

If you cannot establish a connection with the chosen entry or you wish to configure further wireless network connection settings, choose the **Advanced** button in the **Connect to Wireless Network** dialogue box.

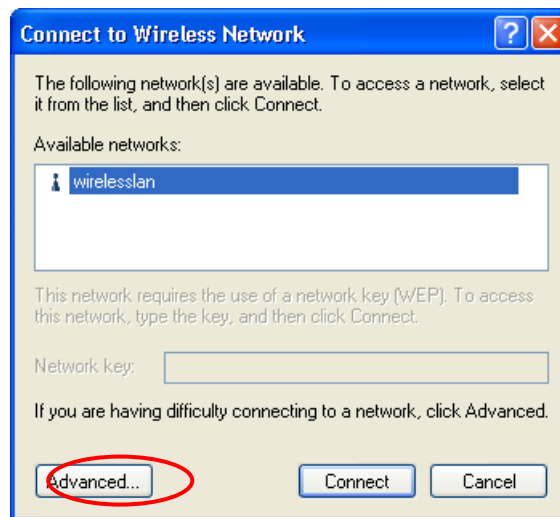


Figure 4.2-1: The **Connect to Wireless Network** Dialog Box

After clicking **Advanced**, you will enter into the **Wireless Networks** tab of the **Wireless Network Connection Properties** dialog box, in which three other tabs are found, including **General**, **Authentication**, and **Advanced**. The **Wireless Networks** tab includes almost the main settings for the networking connection. Thus, please check the descriptions below to learn more about the tab.

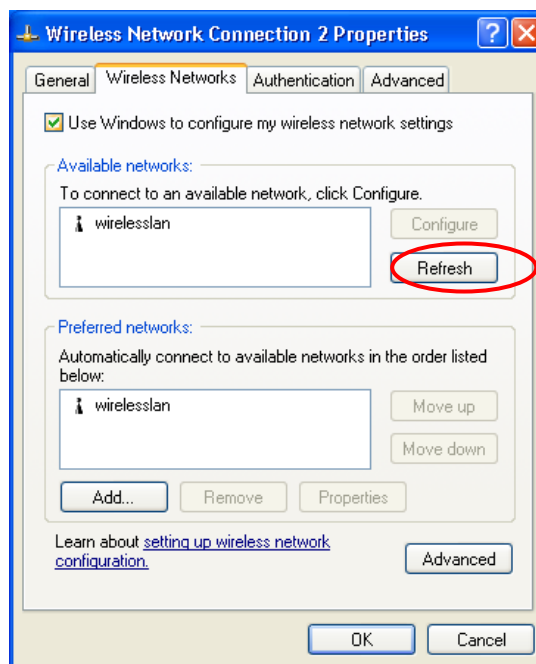


Figure 4.2-2: The **Wireless Network Connection Properties** Dialog Box

Note: For more detailed information about each tab, please refer to the Windows XP Online-Help.

The **Wireless Networks** tab is chiefly consisted of two sections: **Available networks** and **Preferred networks**.

- Under the **Available networks** area, all the available access points or Wireless LAN PC Card equipped computers are displayed. You may wish to click **Refresh** to update the list. If you choose any listed item in the field and then click **Configure**, the **Wireless Network Properties** dialog box will appear as Figure 3.2-3 shows. Check the descriptions below the figure to obtain more information about the dialog box.

- In the **Preferred networks** area, you could add any displayed networks to the list by clicking over the intended item from **Available networks** and then selecting the **Add** button. After clicking **Add**, the **Wireless Network Properties** dialog box will appear as Figure 3.2-3 displays. Note that to delete any item under the **Preferred networks** area, simply click on it and then select the **Remove** button. Additionally, you may adjust the items in the list by clicking the desired item and then choosing the **Move up** or **Move down** button. It is, however, important to realize that Windows XP will always choose the first one in the list to establish the networking connection.

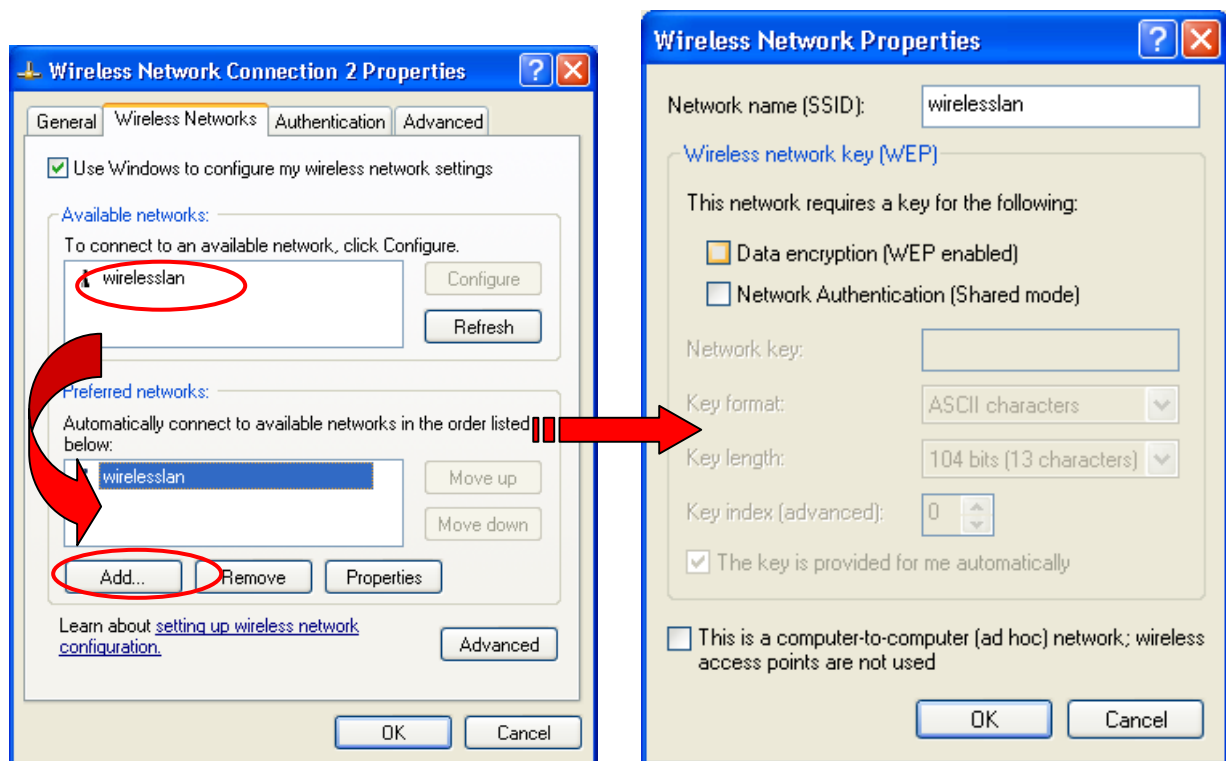


Figure 4.2-3: The **Wireless Network Properties** Dialog Box

Note: Once you choose an item from the **Preferred networks** list and then click **Properties**, the **Wireless Network Properties** dialog box will also be provoked.

- In the opened **Wireless Network Properties** dialog box, edit texts in the **Network Name (SSID)** field to identify the chosen network entry in the wireless LAN.
- If there's a need, go to the **Wireless network key (WEP)** area to set the keys as the associated access point or Wireless LAN PC Card equipped computer requests. To set WEP, select **Data encryption (WEP enabled)** and **Network Authentication**. Then enter the encryption key for the network you intend to connect in the **Network key** field. Prior to typing texts as the network key, you may wish to define the **Key format** and **Key length**. Click **OK** when you are finished, and you will return to the **Wireless Network Connection Properties** dialog box.

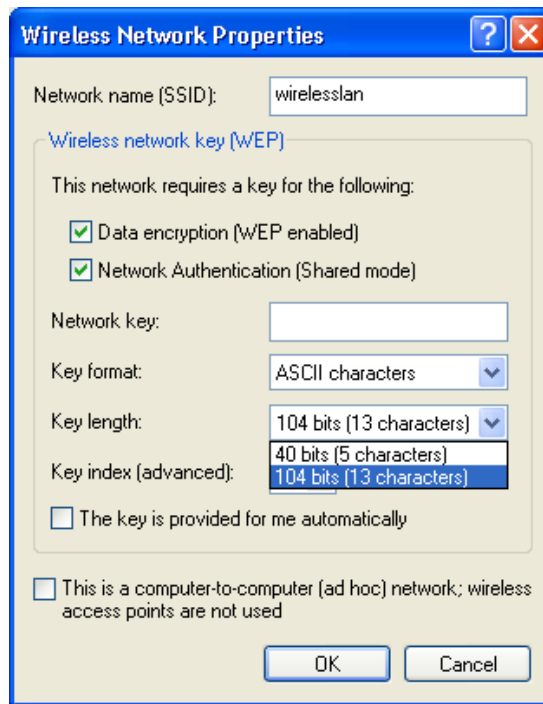


Figure 4.2-4: WEP Settings

Note: For more details of this tab, you may click the link: [setting up wireless network configuration](#) at the bottom of the **Wireless networks** tab to launch the Windows XP Online-Help.

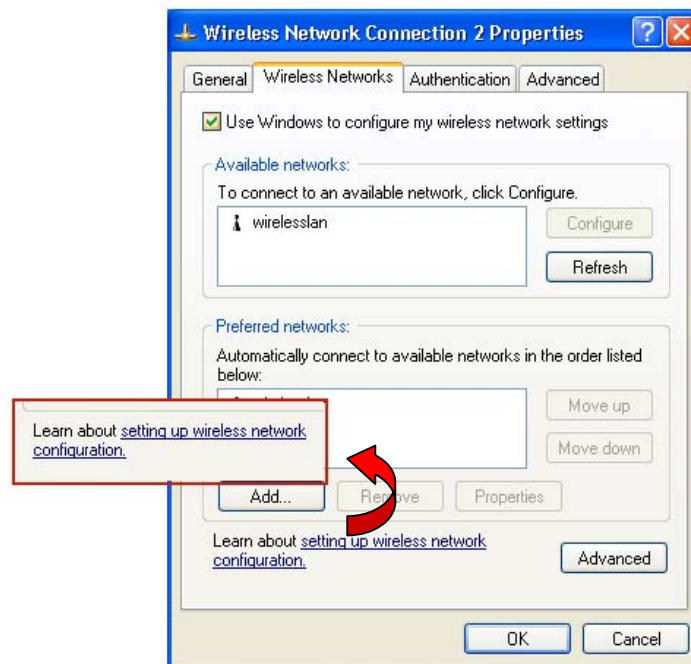


Figure 4.2-5: Setting up Wireless Network Configuration

4.3 To Access to Certain Wireless Network Type

The default network type of **Windows XP Zero Configuration** is any available access points (Access Point mode) or WLAN Card equipped computers (Ad-Hoc mode) within the range at the given time. However, you may wish to connect to a certain network type sometimes. To change the default settings, click the **Advanced** button in the **Wireless Network Connection Properties** dialog box.

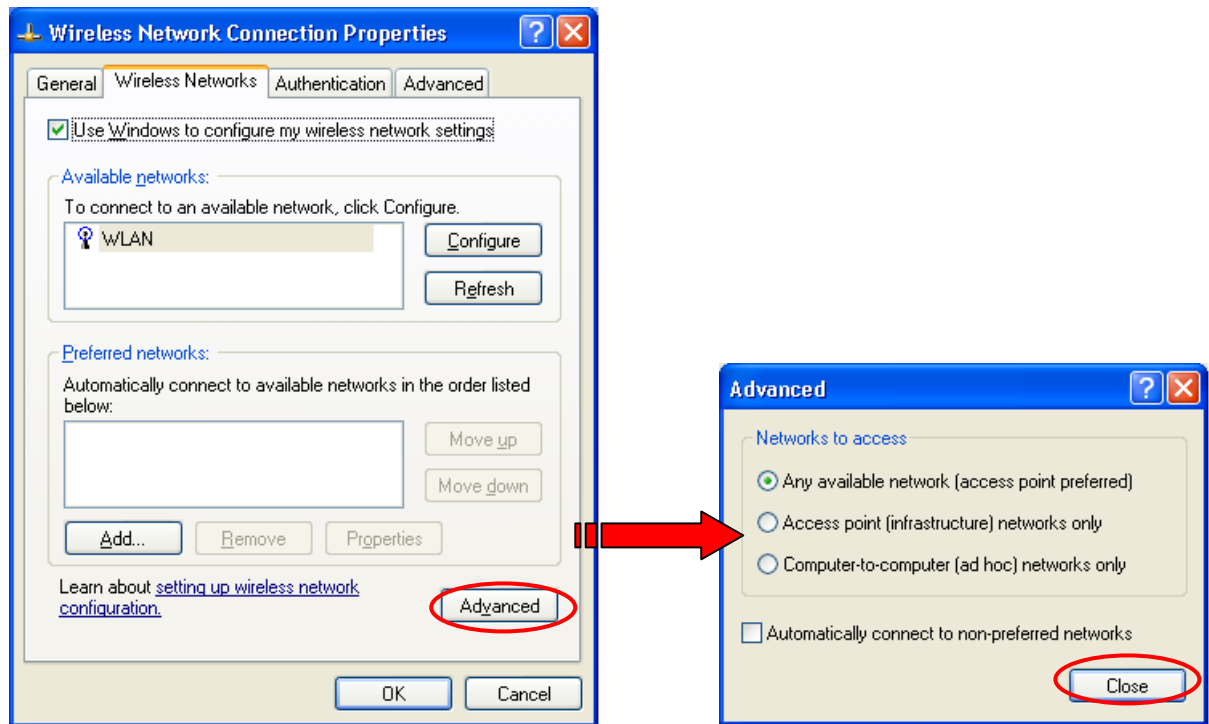


Figure 4.3-1 The **Advanced** Dialog Box:

The **Advanced** dialog box provides three options, **Any available network**, **Access point networks only**, and **Computer-to-computer networks only**. Choose one of them according to your need and click **Close** to finish. Then you will find under the **Available networks** area in the **Wireless Network Connection Properties** dialog box, only the specified networks are displayed.

Note: If you wish to use the attached application – **WLAN-54G USB Configuration Tool** of the Wireless 802.11g/b USB Stick instead of Windows XP's **Wireless Zero Configuration**, please refer to **2.2 Installation Notes –Windows XP** in this manual to change the settings.

APPENDIX A: TROUBLESHOOTING

This section provides solutions to problems that you might encounter during the installation and operation of your Wireless 802.11g/b USB Stick. Please refer to the desired topics below and read the description to solve your problems.

The Wireless 802.11g/b USB Stick Does Not Work Properly

If this happens, follow the guidelines below.

1. Right-click the **My Computer** desktop icon and choose **Properties** to open the **System Properties** dialog box.
2. Click the **Hardware** tab and then select the **Device Manager** button.
3. In the opened window, find your USB Stick to see if the installation is successful. If you see a yellow exclamation mark beside the item, please heading to following steps to reinstall the drivers.
4. Uninstall the software and hardware drivers from your PC. (Please refer to the **Uninstall WLAN-54G USB Configuration Tool and the Stick's Driver** chapter for details)
5. Restart your computer and repeat the installation procedures as indicated from page 4 of this manual.
6. When finished, open the **Device Manager** window again to verify if the installation is approved. The yellow exclamation mark shall be removed for this time.

Disable the Wireless 802.11g/b USB Stick

Supposed you do not need the 802.11g/b USB stick to establish the wireless connectivity for any reason, click **Disable Radio** on the **Status** tab of the **Wireless Settings** dialog box. Thus, be sure that you have closed all network applications before disable the device.

Upgrade the Configuration Tool and the Stick's Driver

If you have installed the configuration tool with the previous version, please refer to the next section for uninstalling the **WLAN-54G USB Configuration Tool** and the stick's driver, then reinstall by following the instructions of this manual or the Quick Start Guide.

Or you may simply ignore the previous version and go through the installation procedures as a new user.

Uninstall WLAN-54G USB Configuration Tool and the Stick's Driver

Prior to starting uninstalling, please make sure that the utility is closed. To remove the **WLAN-54G USB Configuration Tool** and the module's driver, please check the following introductions for detailed procedures.

1. Execute the uninstall function through the **WLAN-54G USB Uninstall** command of **WLAN-G TOOLS** in the **Program** menu provoked by clicking the **Start** button on the task bar.

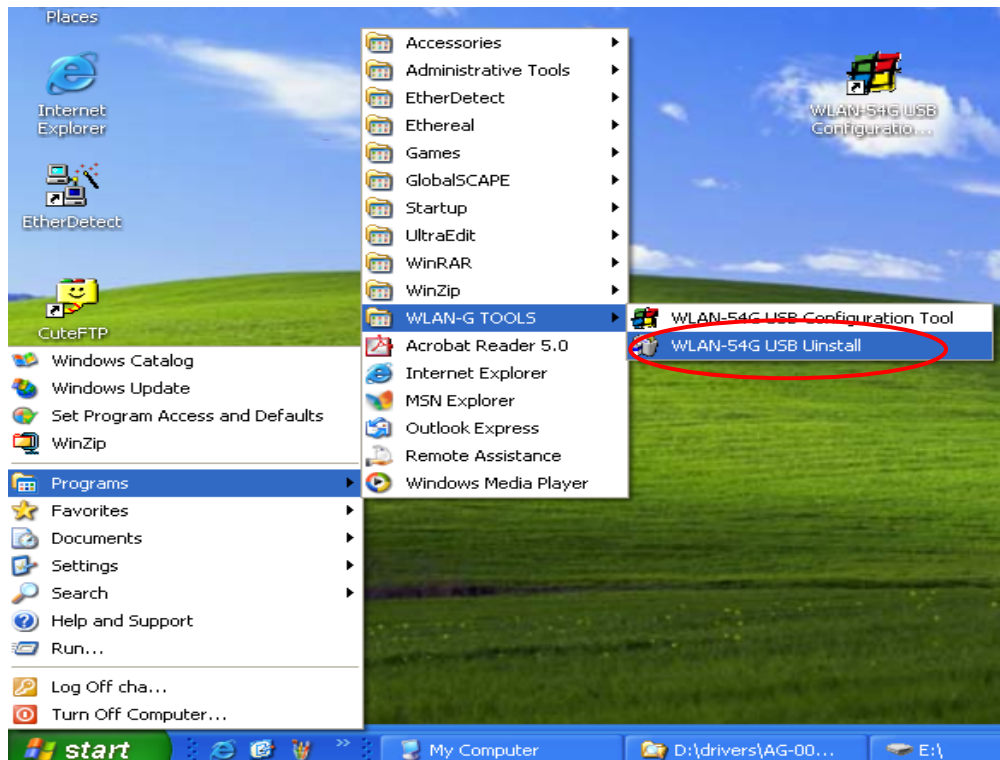


Figure 5-1: The **WLAN-54G USB Configuration Tool** Uninstall Command

2. Choose **OK** when the following message box appears.

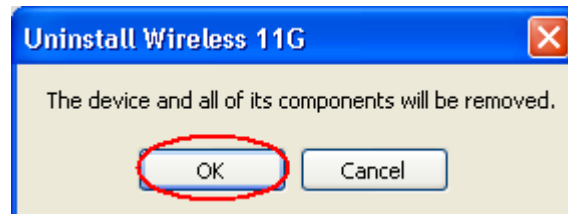


Figure 5-2: The **WLAN-54G USB Configuration Tool** Removal Warning Message

3. Click **Finish** in the **Uninstall Finished** dialog box. Note that when you are running Win98/98SE/ME, the computer will restart automatically after you click the **Finish** button.

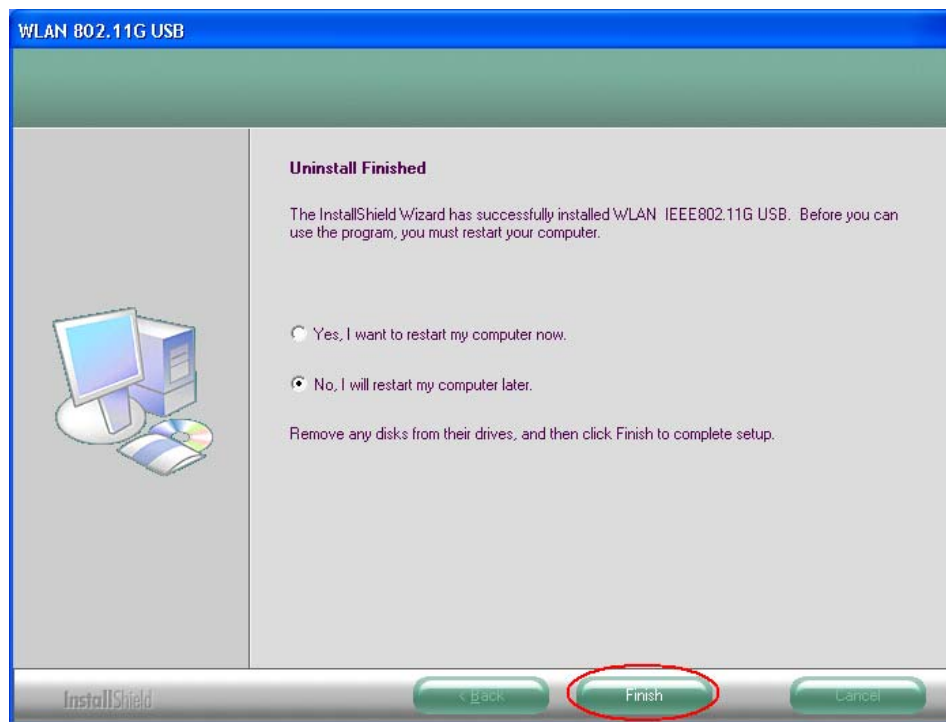


Figure 5-3: The **Uninstall Finished** Screen

APPENDIX B: SPECIFICATIONS

Product Name	Wireless 802.11g/b USB Stick
Host Interface	USB2.0
Standards	IEEE 802.11, IEEE 802.11b, IEEE 802.11g
Frequency Band	2.400 ~ 2.4835GHz (subject to local regulations)
Current Drain	Power save mode=15mA, Standby mode=7mA, Transmit mode=370mA, Receive mode=340mA
Spreading	DSSS (11b), OFDM (11g)
Operating Voltage	5.0 V \pm 5%
Data Rate	1Mbps, 2Mbps, 5.5Mbps, 6Mbps, 9Mbps, 11Mbps, 12Mbps, 18Mbps, 24Mbps, 36Mbps, 48Mbps, 54Mbps
Transmit Power	802.11b \geq 17dBm 802.11g 6/9Mbps \geq 17dBm 12/18Mbps \geq 15dBm 24Mbps \geq 14dBm 36Mbps \geq 14dBm 48Mbps \geq 12dBm 54Mbps \geq 12dBm
Receive Sensitivity	802.11b 8% FER@1Mbps \leq -91dBm 8% FER@2Mbps \leq -88dBm 8% FER@5.5Mbps \leq -85dBm 8% FER@11Mbps \leq -83dBm 802.11g 10% PER@6Mbps \leq -88dBm 10% PER@9Mbps \leq -87dBm 10% PER@12Mbps \leq -84dBm 10% PER@18Mbps \leq -82dBm 10% PER@24Mbps \leq -79dBm 10% PER@36Mbps \leq -75dBm 10% PER@48Mbps \leq -69dBm 10% PER@54Mbps \leq -68dBm
Modulation	CCK (11b), BPSK, QPSK, 16-QAM, 64-QAM (11g)
Security	64/128 bit WEP Encryption 802.1x, WPA (Windows XP SP1 and Windows 2000 SP4 only)
Internal Antenna Type	Single Chip Antenna
Media Access Control	RF activity
Supplied Driver	CSMA/CA with ACK

Warranty	1 year
Temperature Range	0~65°C (Operating)
Humidity	Max. 95% Non-condensing
Operating Range	Open Space: up to 400meters; Indoor: up to 100meters The transmission speed varies in the surrounding environment.