



A small fanless rugged Industrial MiniPC
yBOX-X44-(6LAN, 2COM)-J1900 Barebone

Category:	MiniPC Industry
Manufacturer:	Mobikator
Supported OS:	Microsoft Windows: 7/8/8.1/10, Linux
Installed OS:	-----
Chipset:	Intel express chipset
CPU Support:	Intel Celeron/Pentium/i3/i5
Installed CPU:	Intel Celeron J1900 (4 core 4 threads, 2M Cache, 2.00 GHz up to 2.42 GHz, TDP: 10W)
Graphic Card:	Intel UHD Graphics
Memory Support:	DDR4 SO-DIMM (max. 16GB)
Installed Memory:	None (Available in a different version)
Storage (HDD) Support:	SSD / HDD
Installed Storage (HDD):	None (Available in a different version)
IP Norm:	-----
Temp:	-20°C — 60°C
Storage temperature:	-20°C — 60°C
Humidity:	5% ~ 95%
Others:	Color Black
LAN:	Intel 210-AT 10/100/1000M

Wireless LAN card:	Option
3G:	Option
4G LTE:	Option
Bluetooth:	Option
Rear Panel (ports):	Power connector DC12V6x Intel i211 RJ45 Gigabit LAN
Front Panel (ports):	2x USB 2.0 2x USB 3.0 1x HDMI 1x COM (RS-232) Włącznik
Expansion:	-----
Power:	12V5A
Watch Dog Timer:	Yes
CD/DVD Drive:	-----
TV Tuner:	-----
Dimensions:	209mm x 149mm x 54mm
Fanless:	Yes
Weight:	2200g

344,55 €

net price: 280,12 €



TECHNICAL SPECIFICATION

RESISTANCE AND DURABILITY

CONNECTIVITY AND COMMUNICATION

DEVICE APPLICATION

AVAILABLE VERSIONS

Small dimensions industrial computers excel in environments where dust, dirt and moisture predominate. They are ideal for applications requiring quiet operation. Small and reliable MiniPC use heat-pipe technology and aluminum fins for passive cooling. The robust mini Industrial Computer yBOX-X44-(6LAN, 2COM)-J1900 is a device designed for all industrial and non-continuous applications requiring continuous operation - 24 hours, 7 days a week.



Small dimensions

The compact housing means that the Mini PC will fit wherever you need it and is easy to carry.



Lightweight design

The computer's weight is 2.2kg, so it can be conveniently carried.



Efficient components

The Intel Celeron J1900 quad-core CPU provides improved device performance.



Wireless network*

The mini PC can be connected to nearby wireless networks by equipping it with an optional Wi-Fi module.

SSD

Quick start*

A modern SSD drive will increase the speed of application programs and ensure quiet computer operation.



Passive cooling

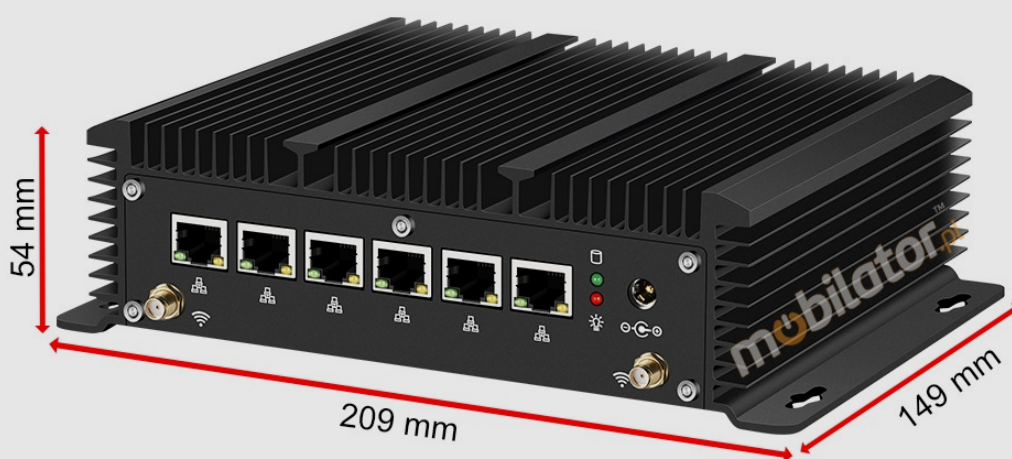
The use of passive cooling in the Mini PC ensures silent operation and slows dust deposition.

* Optional equipment, available only in other version of the device

SPECIFICATION

EFFICIENT PROCESSOR

The industrial mini-computer yBOX-X44-(6LAN, 2COM)-J1900 uses an efficient and energy-saving Intel Celeron J1900 processor. Inside it there are four cooperating cores enabling more efficient processing of many tasks at the same time. The shared cache memory in which the multilevel hierarchy is used is dynamically allocated to each processor core depending on the load. This reduces the average access time to the main memory.



Performance

Processor	Intel Celeron J1900 (4 core 4 threads, 2M Cache, 2.00 GHz up to 2.42 GHz, TDP:10W)
Graphics card	Intel UHD Graphics Graphics Base Frequency: 300MHz Graphics Max Dynamic Frequency: 950MHz
Operating system	Windows 7/8/10 Linux
RAM	None (4GB / 8GB / 16GB DDR4 2133MHz) *
Drive	None (64GB / 128GB / 256GB /512GB SSD) *

Interfaces

Connectivity	Wi-Fi - 802.11.b/g/n 150Mb/s * Ethernet: 6x(10/100/1000)LAN Mbps Intel 210at Wake UP on LAN S5 RTC Wake Settings, PXE Boot, Restore on AC power loss. Bluetooth *
Front panel	2x USB 2.0 / 2x USB 3.0 / 1x HDMI / 1x COM / Power On/Off
Rear panel	Power connector: DC12V5A 60W (AC TO DC, 100~ 240V) LAN: 6x Gigabit Ethernet

Other

Available colors	Black
Dimensions	209mm x 149mm x 54mm
Weight	2.2kg

* Optional equipment, available only in other version of the device



Detailed device specification is available in the ["Technical data"](#) tab.

PASSIVE COOLING

The industrial Mini PC uses a proven cooling system, based only on solid elements, mainly heat sinks. The system uses the phenomenon of metals passing thermal energy into the environment - there are no additional moving elements in the form of eg fans. This solution ensures noiseless operation, lower failure rate and greater protection against dust and other dirt while reducing the amount of energy consumed.

[go up...](#)

RESISTANCE

TEMPERATURES

yBOX-X44-(6LAN, 2COM)-J1900 is designed for continuous operation in both very low and high temperatures ranging from -20 ° C to 65 ° C. If the device is switched off, it can already handle temperatures in the range of -20 ° C to 65 ° C.



Work temp.	-20°C — 65°C
Storage temp.	-20°C — 65°C
Humidity	5% — 95% Relative humidity, no condensation

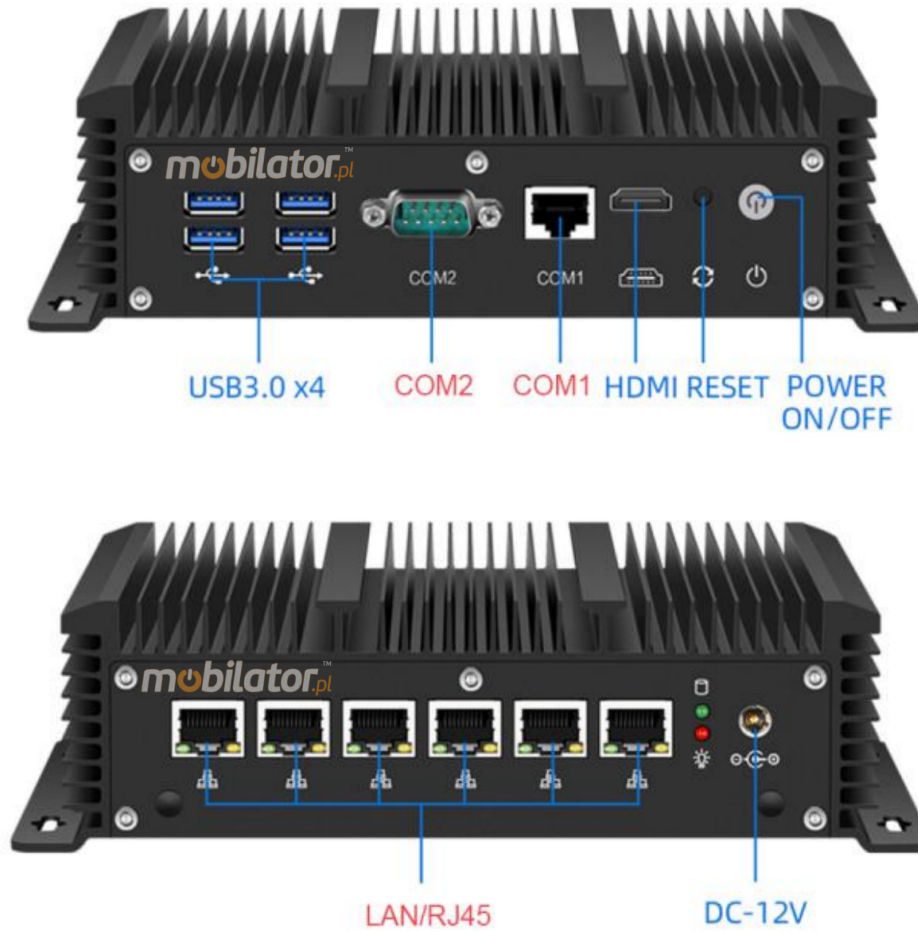
MECHANICAL DAMAGE

The passive cooling system used in the MiniPC yBOX-X44-(6LAN, 2COM)-J1900 combined with the disk SSD make this computer very resistant to various types of mechanical injuries. An additional advantage of industrial computers is a solid construction made of high quality aluminum and specially designed in such a way that in addition to high efficiency in heat dissipation, it can also resist any external damage.

[go up...](#)

ŁĄCZNOŚĆ

INTERFACES



WIRELESS NETWORK (OPTIONAL)

The dual-band Wi-Fi module provides quick access to the network wherever you can connect to secured or open Wi-Fi networks. This is a convenient solution for people who have a router at home or place of residence and a wireless network that can be used at no extra charge. Industrial mini-PC yBOX-X44-(6LAN, 2COM)-J1900 has been equipped the standard of - 802.11b/g/n, which allows transfer of files at a dizzying speed of up to 150 Mb / s.

WIRED LAN NETWORK

The MiniPC yBOX-X44-(6LAN, 2COM)-J1900 has built-in six Intel 210AT network adapters that can work in a fast Gigabit Ethernet network.

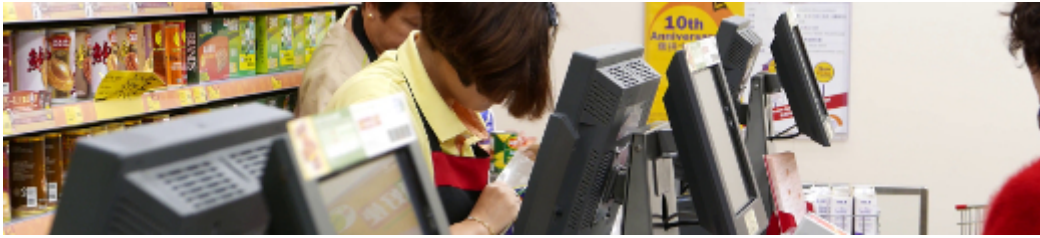


[go up...](#)

APPLICATIONS

TRADE AND SERVICES

Mini PC is an ideal tool to support us in the implementation of many activities in the field of trade, small dimensions increase the possibility of its adaptation to activities such as issuing invoices or preparing documentation, which in turn allows us to convenient and optimal sales management. The VESA holder mounted to the housing provides many installation options, eg in stores (at the cash register, under the desktop, behind the LCD / LED monitor), in factory halls or in a delivery truck.



WAREHOUSE AND LOGISTICS

Thanks to COM ports and high performance, an industrial computer can be used to connect multiple devices in a warehouse and make their management much easier. Its rugged casing and the fanless cooling system are ideal for harsh environments in such rooms. The solid construction guarantees long-lasting work, even in environments with high dustiness and dirt.



TRANSPORT AND MOTORIZATION

A small industrial computer can be used in transport thanks to the ability to work on 12V5A power supply. Then the mini computer can be used in passenger cars, buses, trams, taxis, trains and even in airplanes. It allows you to inform the driver about the current state of the vehicle, transfer its current location to the management center, display information for passengers, etc. It performs well in vehicles where small dimensions are important.



More pictures of the device available in the ["Gallery"](#) tab.

[go up...](#)

VERSIONS



The industrial mini-computer yBOX-X44-(6LAN, 2COM)-J1900 is offered in several versions to suit different needs. By clicking on the number of the hardware configuration you will be redirected to the product with the parameters given in the table below. In addition, it is possible to create a configuration that is currently unavailable on the customer's request.

	v.1	v.2	v.3	v.4	v.5	Barebone
4GB RAM	+	+	-	-	-	-

8GB RAM	—	—	+	+	—	—
16GB RAM	—	—	—	—	+	—
64GB SSD	+	—	—	—	—	—
128GB SSD	—	+	—	—	—	—
256GB SDD	—	—	+	—	—	—
512GB SSD	—	—	—	+	—	—
1TB SSD	—	—	—	—	+	—
WiFi+Bluetooth	+	+	+	+	+	—