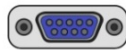


bBox Android



bBOX Android v.5 - Resilient industrial computer with ANDROID system and 4G LTE technology



Category:	MiniPC Industry
Manufacturer:	Mobilator
Supported OS:	Android 7.1
Installed OS:	-----
Chipset:	Intel Chipset
CPU Support:	RK 3288 ARM Cortex A-17 (4x 1.8 GHz)
Installed CPU:	RK 3288 ARM Cortex A-17 (4x 1.8 GHz)
Graphic Card:	Quad-Core Mali-T764 3D GPU Support OpenGL ES1.1/2.0/3.0, OpenVG1.1, OpenCL1.1 and Renderscript
Memory Support:	2GB / 4GB DDR3 SODIMM
Installed Memory:	2GB
Storage (HDD) Support:	EMMC Flash 16GB 64GB
Installed Storage (HDD):	16GB
IP Norm:	-----
Temp:	-10°C — +60°C
Storage temperature:	-10°C — +60°C
Humidity:	5% 95% Non-Condensing
Others:	Black
Wireless LAN card:	(option)
3G:	Yes
4G LTE:	Yes
Bluetooth:	(Option)
Rear Panel (ports):	HDMI1xLANVGADC12VSIM
Front Panel (ports):	Power ON4xUSB2.0Audio/MicRecovery

Expansion:	----
Power:	DC 12V input 5A
Watch Dog Timer:	----
CD/DVD Drive:	----
TV Tuner:	----
Dimensions:	134 x 126 x 46.5 mm
Fanless:	Yes
Weight:	0.5 kg

Product from the Archive - production finished

bBox Android



HDMI™

4G



TECHNICAL SPECIFICATION

RESISTANCE AND DURABILITY

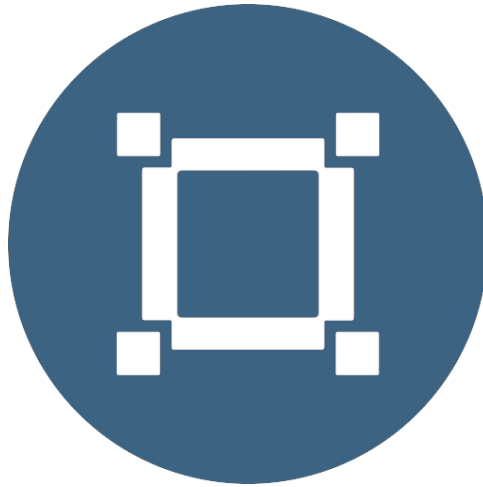
CONNECTIVITY AND COMMUNICATION

DEVICE APPLICATION

AVAILABLE VERSIONS

Small dimensions industrial computers excel in environments where dust, dirt and moisture predominate. They are ideal for applications requiring quiet operation. Small and reliable MiniPC use heat-pipe technology and aluminum

fins for passive cooling. The robust mini Industrial Computer bBOX Android is a device designed for all industrial and non-continuous applications requiring continuous operation - 24 hours, 7 days a week.



Small dimensions

The compact housing means that the Mini PC will fit wherever you need it and is easy to carry.



Lightweight design

The computer's weight does not exceed 1 kg, so it can be conveniently carried in a bag or backpack.



Efficient components

The Intel
quad-core
ARM Cortex
A17 1.8 GHz
provides improved
device performance.



Wireless network *

The mini PC can be
connected to nearby
wireless networks by
equipping it with an
optional Wi-Fi module.



Quick start

A modern eMMC memory will increase the speed of application programs.



Passive cooling

The use of passive cooling in the Mini PC ensures silent operation and slows dust deposition.

* Optional equipment, available only in other versions of the device.

SPECIFICATION

Mini-PC bBOX Android

Processor	RK 3288 ARM Cortex A-17 (4x 1.8 GHz)
Operation system	Android 7.1
RAM	2 GB DDR3 SODIMM
Drive	16 GB EMMC
Graphic card	Quad-Core Mali-T764 3D GPU Support OpenGL ES1.1/2.0/3.0
Connectivity	WiFi * 3G / 4G Bluetooth 4.0 * LAN: 802.11 b/g/n Mini-PCIe Intel® wireless network card
Front panel	4xUSB 2.0 Recovery Audio/Mic Power button
Rear panel	VGA 1xLAN HDMI Power DC SIM /TF slot*
Available colors	Black
Weigth	0.5 kg
Dimensions	134 x 126 x 46.5 mm

* Optional equipment, available only in other versions of the device.



Detailed device specification is available in the "Technical data".

Efficient processor

The industrial mini-computer bBOX Android uses an efficient and energy-saving ARM Cortex A17 1.8 GHz. Inside it there are four cooperating cores enabling more efficient processing of many tasks at the same time. The shared cache memory in which the multilevel hierarchy is used is dynamically allocated to each processor core depending on the load. This reduces the average access time to the main memory. It offers improved manageability by limiting downtime and maintaining productivity by isolating computing activities into separate partitions.

Interfaces



Dimensions

Thanks to the small dimensions of the MiniPC, the bBOX Android is versatile for use at home, in the office and in the industry, for example in the production hall. It's literally everywhere, and it can be mounted on the back of the monitor to optimize the job.

Dimensions	134 x 126 x 46.5 mm
Weight	0.5 kg

Passive cooling

The industrial Mini PC uses a proven cooling system, based only on solid elements, mainly heat sinks. The system uses the phenomenon of metals passing thermal energy into the environment - there are no additional moving elements in the form of eg fans. This solution ensures noiseless operation, lower failure rate and greater protection against dust and other dirt while reducing the amount of energy consumed.

RESISTANCE AND DURABILITY



Temperatures

bBOX

Android

is designed for continuous operation in both very low and high temperatures ranging from -10 °C to 60°C.

Work temp.	-10°C do 60°C
Humidity	5% 95% Non-Condensing

Mechanical damage

The passive cooling system used in the MiniPC bBOX Android

combined with the eMMC

disk makes this computer very resistant to various types of mechanical injuries. An additional advantage of industrial computers is a solid construction made of high quality aluminum and specially designed in such a way that in addition to high efficiency in heat dissipation, it can also resist any external damage.

CONNECTIVITY AND COMMUNICATION



Wireless network

The dual-band Wi-Fi module provides quick access to the network wherever you can connect to secured or open Wi-Fi networks. This is a convenient solution for people who have a router at home or place of residence and a wireless network that can be used at no extra charge. Industrial mini-PC bBOX

Android

has been equipped the standard of - 802.11n, which allows transfer of files at a dizzying speed of up to 300 Mb / s.

Wired LAN Network

The bBOX

MiniPC

Android

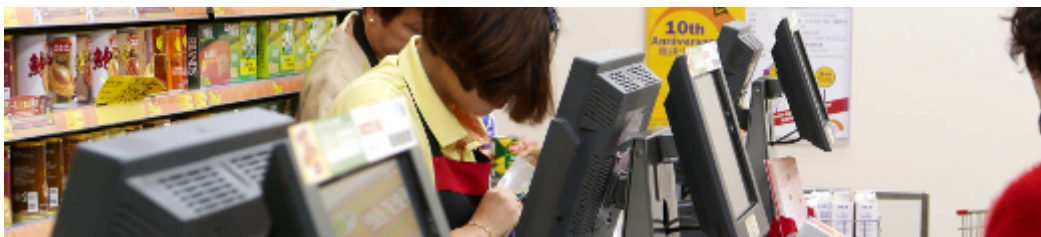
has built-in Realtek network adapter that can work in a fast Gigabit Ethernet network.



DEVICE APPLICATION

Trade and service

Mini PC is an ideal tool to support us in the implementation of many activities in the field of trade, small dimensions increase the possibility of its adaptation to activities such as issuing invoices or preparing documentation, which in turn allows us to convenient and optimal sales management. The VESA holder mounted to the housing provides many installation options, eg in stores (at the cash register, under the desktop), in factory halls or in a delivery truck.



Warehouse and logistics

Thanks high performance an industrial computer can be used to connect multiple devices in a warehouse and make their management much easier. Its rugged casing and the fanless cooling system are ideal for harsh environments in such rooms. The solid construction guarantees long-lasting work, even in environments with high dustiness and dirt.



Monitor



TV



Projector



Printer



Digital signage



Monitoring



Transport and motorization

A small industrial computer can be used in transport thanks to the ability to work on 12V power supply. Then the mini computer can be used in passenger cars, buses, trams, taxis, trains and even in airplanes. It allows you to inform the driver about the current state of the vehicle, transfer its current location to the management center, display information for passengers, etc. It performs well in vehicles where small dimensions are important.





More photos in full resolution available in the "Gallery".

AVAILABLE VERSIONS



The industrial mini-computer bBOX Android is offered in several versions to suit different needs. By clicking on the number of the hardware configuration you will be redirected to the product with the parameters given in the table below. In addition, it is possible to create a configuration that is currently unavailable on the customer's request.

	v.1	v.2	v.3	v.4	v.5
2GB RAM + 16GB ROM	+	-	-	-	+
4GB RAM + 64GB ROM	-	+	+	+	-
WiFi	+	+	+	-	-
Bluetooth	-	-	+	-	-
4G	-	-	-	+	+