

## bBOX i7-4500U

4G



bBOX i7-4500U v.6 - Dustproof mini Industrial computer with 4G LTE technology and 256 GB sSD disk

DDR3  
SSD  
DRIVES



HDMI

USB



**Category:** MiniPC Industry

**Manufacturer:** Mobilator

**Supported OS:** Windows: 7/8//10 | Linux

**Installed OS:** -----

**Chipset:** Intel Chipset

**CPU Support:** Intel Core i7-4500U

**Installed CPU:** Intel Core i7-4500U (2x 1.7 GHz)

**Graphic Card:** Integrated Intel HD Graphics

**Memory Support:** 1x DDR3L low voltage memory 2G( Max 8GB)

**Installed Memory:** **8GB**

**Storage (HDD) Support:** SSD

**Installed Storage (HDD):** **256GB**

**IP Norm:** -----

**Temp:** -10°C — +60°C

**Storage temperature:** -30°C — +70°C

**Humidity:** 5% 95% Non-Condensing

**Others:** Black

**LAN:** Realtek RTL 8111E

**Wireless LAN card:** (Option)

<b>3G:</b>	Yes
<b>4G LTE:</b>	Yes
<b>Bluetooth:</b>	(Option)
<b>Rear Panel (ports):</b>	HDMI4xLAN2xUSB3.0VGA4*COMDC12VAudio/Mic
<b>Front Panel (ports):</b>	Power ON4xUSB2.02xCOM
<b>Expansion:</b>	-----
<b>Power:</b>	DC 12V input 5A
<b>Watch Dog Timer:</b>	-----
<b>CD/DVD Drive:</b>	-----
<b>TV Tuner:</b>	-----
<b>Dimensions:</b>	215x150x52 mm
<b>Fanless:</b>	Yes
<b>Weight:</b>	2.5 kg

Product from the Archive - production finished



TECHNICAL SPECIFICATION

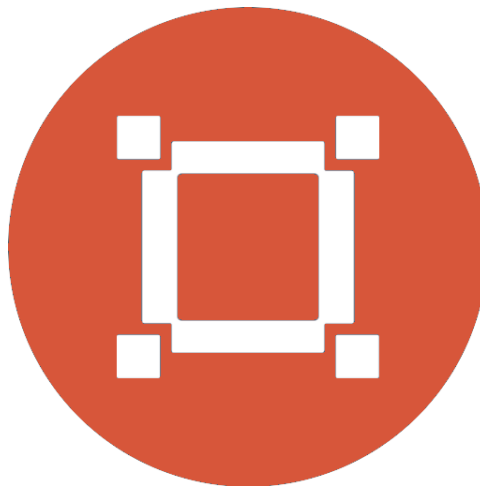
RESISTANCE AND DURABILITY

## CONNECTIVITY AND COMMUNICATION

## DEVICE APPLICATION

## AVAILABLE VERSIONS

Small dimensions industrial computers excel in environments where dust, dirt and moisture predominate. They are ideal for applications requiring quiet operation. Small and reliable MiniPC use heat-pipe technology and aluminum fins for passive cooling. The robust mini Industrial Computer bBOX i7-4500U is a device designed for all industrial and non-continuous applications requiring continuous operation - 24 hours, 7 days a week.



### Small dimensions

The compact housing means that the Mini PC will fit wherever you need it and is easy to carry.



### Lightweight design

The computer's weight does not exceed 3.0 kg, so it can be conveniently carried in a bag or backpack.



### Efficient components

The Intel

i7 4500U

dual-core CPU provides improved device performance.



#### Wireless network \*

The mini PC can be connected to nearby wireless networks by equipping it with an optional Wi-Fi module.



#### Quick start

A modern SSD drive will increase the speed of application programs and ensure quiet computer operation.



### Passive cooling

The use of passive cooling in the Mini PC ensures silent operation and slows dust deposition.

\* Optional equipment, available only in other versions of the device.

## SPECIFICATION

### Mini-PC bBOX i7-4500U

Processor	Intel Core i7-4500U (2x 1.7 GHz)
Operation system	Support: Windows 7/8/10 Linux
RAM	8 GB DDR3L
Drive	256 GB SSD
Graphic card	Integrated Graphic Card
Connectivity	WiFi *   3G / 4G   Bluetooth *  LAN: Realtek RTL 8111E

Mini-PC bBOX i7-4500U	
Front panel	4xUSB 2.0   2xCOM   Power button
Rear panel	2xUSB 3.0   VGA   4xLAN   HDMI   4xCOM Audio   Mic   Power DC
Available colors	Black
Dimensions	215x150x52 mm
Weight	2.5 kg

\* Optional equipment, available only in other versions of the device.



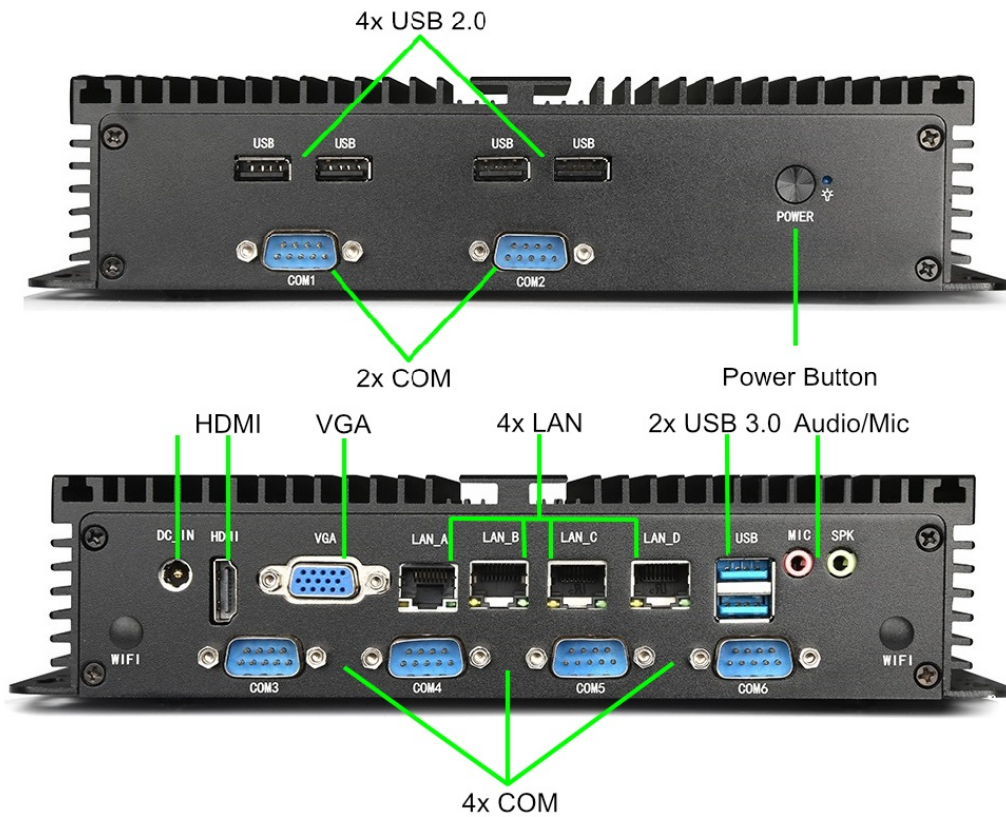
Detailed device specification is available in the "Technical data".



### Efficient processor

The industrial mini-computer bBOX i7-4500U uses an efficient and energy-saving Intel i7 4500U . Inside it there are two cooperating cores enabling more efficient processing of many tasks at the same time. The shared cache memory in which the multilevel hierarchy is used is dynamically allocated to each processor core depending on the load. This reduces the average access time to the main memory. It offers improved manageability by limiting downtime and maintaining productivity by isolating computing activities into separate partitions.

## Interfaces



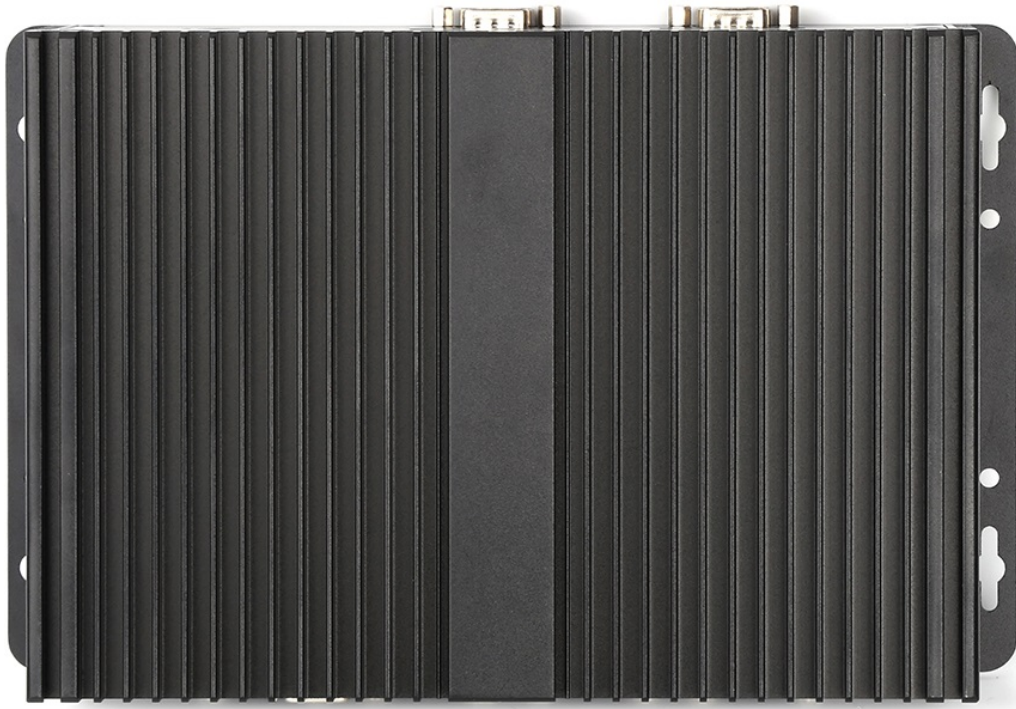
## Dimensions

Thanks to the small dimensions of the MiniPC, the bBOX i7-4500U is versatile for use at home, in the office and in the industry, for example in the production hall. It's literally everywhere, and it can be mounted on the back of the monitor to optimize the job.



<b>Dimensions</b>	215x150x52 mm
<b>Weight</b>	2.5 kg

Passive cooling



The industrial Mini PC uses a proven cooling system, based only on solid elements, mainly heat sinks. The system uses the phenomenon of metals passing thermal energy into the environment - there are no additional moving elements in the form of eg fans. This solution ensures noiseless operation, lower failure rate and greater protection against dust and other dirt while reducing the amount of energy consumed.

## RESISTANCE AND DURABILITY



## Temperatures

bBOX

i7-4500U

is designed for continuous operation in both very low and high temperatures ranging from  $-10^{\circ}\text{C}$  to  $60^{\circ}\text{C}$ . If the device is switched off, it can already handle temperatures in the range of  $-10^{\circ}\text{C}$  to  $60^{\circ}\text{C}$ .

<b>Work temp.</b>	$-10^{\circ}\text{C}$ do $60^{\circ}\text{C}$
<b>Storage temp.</b>	$-30^{\circ}\text{C}$ do $+70^{\circ}\text{C}$
<b>Humidity</b>	5% 95% Non-Condensing

## Mechanical damage

The passive cooling system used in the MiniPC bBOX i7-4500U

combined with the SSD disk makes this computer very resistant to various types of mechanical injuries. An additional advantage of industrial computers is a solid construction made of high quality aluminum and specially designed in such a way that in addition to high efficiency in heat dissipation, it can also resist any external damage.

## CONNECTIVITY AND COMMUNICATION



### Wireless network (Option)

The dual-band Wi-Fi module provides quick access to the network wherever you can connect to secured or open Wi-Fi networks. This is a convenient solution for people who have a router at home or place of residence and a wireless network that can be used at no extra charge. Industrial mini-PC bBOX

i7-4500U

has been equipped the standard of - 802.11n, which allows transfer of files at a dizzying speed of up to 300 Mb / s.

### Wired LAN Network

The  
bBOX

MiniPC

i7-4500U

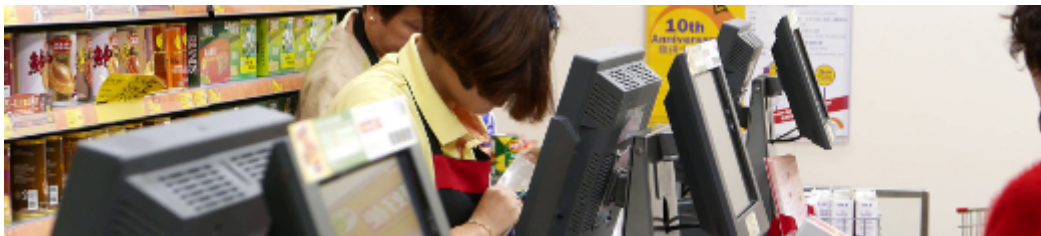
has built-in Realtek network adapter that can work in a fast Gigabit Ethernet network.



## DEVICE APPLICATION

Trade and service

Mini PC is an ideal tool to support us in the implementation of many activities in the field of trade, small dimensions increase the possibility of its adaptation to activities such as issuing invoices or preparing documentation, which in turn allows us to convenient and optimal sales management. The VESA holder mounted to the housing provides many installation options, eg in stores (at the cash register, under the desktop), in factory halls or in a delivery truck.



Warehouse and logistics

Thanks high performance an industrial computer can be used to connect multiple devices in a warehouse and make their management much easier. Its

rugged casing and the fanless cooling system are ideal for harsh environments in such rooms. The solid construction guarantees long-lasting work, even in environments with high dustiness and dirt.



Monitor



TV



Projector



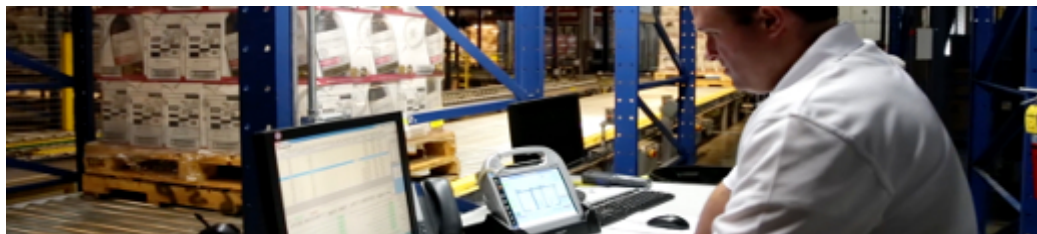
Printer



Digital signage



Monitoring



## Transport and motorization

A small industrial computer can be used in transport thanks to the ability to work on 12V power supply. Then the mini computer can be used in passenger cars, buses, trams, taxis, trains and even in airplanes. It allows you to inform the driver about the current state of the vehicle, transfer its current location to the management center, display information for passengers, etc. It performs well in vehicles where small dimensions are important.



More photos in full resolution available in the "Gallery".

## AVAILABLE VERSIONS



The industrial mini-computer bBOX i7-4500U is offered in several versions to suit different needs. By clicking on the number of the hardware configuration you will be redirected to the product with the parameters given in the table below. In addition, it is possible to create a configuration that is currently unavailable on the customer's request.

	v.1	v.2	v.3	v.4	v.5	v.6
Wifi + Bluetooth	—	—	+	+	—	—
Wifi	+	+	—	—	+	—
4G LTE	—	—	—	—	—	+
2GB RAM	+	—	—	—	—	—

4GB RAM	—	+	+	—	—	—
8GB RAM	—	—	—	+	+	+
32GB SSD	+	—	—	—	—	—
64GB SSD	—	+	—	—	—	—
128GB SSD	—	—	+	—	—	—
256GB SSD	—	—	—	+	+	+