

BiBOX - 156PC2 (i5-10th)



BiBOX-156PC2 (i5-10210U) v. 6 –
Waterproof Industrial Panel with Windows
10 PRO license, advanced SSD and WiFi
and Bluetooth (2xLAN, 4xUSB)D

Category:	Industrial Panel PC Computers
Manufacturer:	Mobilator
Supported OS:	Windows 7/8/10 Linux Ubuntu
Installed OS:	WINDOWS 10 PRO license
Screen size:	15.6 inch
Resolution:	1920×1080
Aspect ratio:	16:9
Brightness:	250 nits
Touchscreen:	10 Points Projected Capacitive Touch Screen
CPU Support:	Intel® Core i5
Installed CPU:	Intel® Core i5-10210U Quad Core (4x1.6)
Graphic Card:	Integrated Intel HD Graphics
Storage (HDD) Support:	SSD (max 1TB)
Installed Storage (HDD):	128GB SSD
Memory Support:	DDR4 (max 16GB)
Installed Memory:	4GB
IP Norm:	-----

IP Level (front panel):	IP65
IP Level (back panel):	-----
Temp:	-10 °C to 60 °C
Storage Temp:	-20 °C to 70 °C
Humidity:	0% - 95% Non-Condensing
Anti-shock:	----
Anti-vibration:	----
Barcode reader:	No
RFID scanner (reader):	No
Others:	Color: Black
LAN:	Realtek RTL 8111E Gigabit Ethernet
Wireless LAN card:	Yes
3G:	-----
4G LTE:	None (Available in a different version)
Bluetooth:	Yes
GPS:	No
Ports - rear panel:	2x USB 2.0 2xUSB 3.0 2x COM 2x LAN 1x VGA 1x HDMI DC 12V
Ports - front panel:	-----
Ports - left panel:	-----
Ports - right panel:	-----
Expansion:	-----
Power:	DC-12V
Power Consumption:	-----
Watch Dog Timer:	-----
Mounting VESA:	-----
Folding Bracket (for office type working):	-----
Chipset:	Intel
CD/DVD Drive:	No

Audio:	Yes
TV Tuner:	No
Backlight MTBF:	-----
Contrast Ratio:	1000:1
Dual display:	Yes
Viewing Angle:	89°/89°/89°/89° (R/L/U/D)
Touch Life(contacts):	-----
Surface hardness (display):	-----
Color Resolution:	-----
Response time touch-panel (ms):	----
Housing material:	metal
Dimensions:	412 x261 x 57mm
Fanless:	No (option)
Weight:	5.5kg

Product from the Archive - production finished

BiBOX-156PC2 (i5-10th)



SPECIFICATION AND PARAMETERS

DISPLAY AND TOUCH

RESISTANCE AND PROTECTION

COMMUNICATION AND CONNECTORS

APPLICATION

AVAILABLE VERSIONS

Industrial PC panels are integrated devices consisting of a PC computer and a touch monitor. Due to their design, they can work even under severe conditions prevailing in industrial environments, such as high humidity, high dustiness, contact with water or very low or high temperatures. These panels are characterized by high efficiency and stability of operation in all conditions.



Efficient cooling

The housing with notches used in the panel ensures good air exchange inside the device



SSD

Quick start

A modern SSD drive will increase the speed of applications and programs and ensure quiet computer operation.



Efficient

The Intel Core i5-10210U improves the device's performance.



Bright Screen

The display with 250 nits brightness makes the picture much more vivid and better readable when used outside in the sun.



Wireless network

The panel can be connected to nearby wireless networks by equipping it with an optional Wi-Fi



Capacitive screen

module.

The capacitive screen allows precise handling and gentle on-screen movement.

Specifications and parameters

Performance	
Processor	Intel® Core i5-10210U Quad Core (4x1.6)
Graphics card	Integrated HD Graphics
Operating system	Support for Windows 7/8/10 Linux Ubuntu
RAM	4GB DDR4
Drive	128GB SSD
Display	
Screen	15.6" (1920x1080)
Touch screen	10 Points Projected Capacitive Touch Screen
Brightness	250 nits
Screen ratio	16:9
View angle	89°/89°/89°/89° (R/L/U/D)
Interfaces	
Communication	WiFi+Bluetooth (4G)*

Interfaces	
Connectors	2x USB 2.0 2x USB 3.0 2x COM 2x LAN 1x VGA 1x HDMI DC 12V
Other	
Dimensions	412 x 261 x 57mm
Weight	5.5 kg
Casing material	Metal

* Optional equipment, available only in specific versions of the device.



Detailed device specification is available in the "Technical data".

The industrial PC panel uses an efficient and energy-saving Intel Core i5-10210U. In its interior there are four cooperating cores enabling more efficient processing of many tasks at the same time. Shared cache memory in which a multi-level hierarchy is used is dynamically allocated to each processor core depending on the load. This reduces the average access time to the main memory. Improved graphics card technology allows you to enjoy movies at full resolution and HD quality.



More photos in full resolution available in the "Gallery".

Display and touch

Amplified, metal industrial computer BiBOX-156PC2 has a water-resistant and scratch-proof 15.6" LED screen 1920x1080 resolution offers good image quality, and high brightness in the 250 nits range gives better color saturation and contrast and allows significantly improved visibility even in the case of incident. The display of the resistive type provides the user with a clear image and ease of use by touch.

CAPACITIVE SCREEN

The capacitive screen consists of a glass coating that is covered with an insulator. Touching the surface of the touch pad with your finger causes a

disturbance in the flow of electric current. This display provides very good visibility under industrial conditions. The panel can be operated with one finger or conductive material (special glove). This type of screen provides support for multi-touch technology, which is a clear convenience during work. This is due to the fact that a large number of electrodes allows accurate detection of many points of touch. You do not have to use a stronger pressure for capacitive screens, because you only need to lightly brush the screen with your finger to make the device react.



Resistance and protection

QUALITY OF MATERIALS

The panel PC has a good-quality metal casing. It is an important element of the cooling system thanks to specially designed cutouts that facilitate air circulation inside the housing. The overall design of the device is focused on simplicity and functionality, appreciated among professionals, as an

accessory the panel can be equipped with passive cooling.



EXTREME TEMPERATURES

PanelPC BiBOX-156PC2 is designed for continuous operation both at very low and high temperatures in the range from -10 ° C to 60 ° C. If the device is turned off, it can handle temperatures ranging from -20 ° C to 70 ° C. In addition, the durable PanelPC is perfect for rooms with increased humidity, ensuring proper functioning even in the case of 95% relative air humidity. It is also possible to purchase additional fanless cooling.

Work temp.	-10°C do 60°C
Storage temp.	-20°C do 70°C
Humidity	5% - 95% Non-Condensing



IP65 front case. The IP standard defines the degree of protection provided by the enclosure of an electrical device against such factors as: access to dangerous parts inside the enclosure, penetration of foreign matter, splashing or immersion.

<p>IP6X</p>	<p>No ingress of dust, complete protection against contact. A vacuum must be applied. Test duration of up to 8 hours based on air flow.</p>
<p>IPX5</p>	<p>Water projected by a nozzle (6.3 mm) against enclosure from any direction shall have no harmful effects.</p>

Communication and connectors

The dual-band Wi-Fi module provides quick access to the network wherever you can connect to secured or open Wi-Fi networks. This is a convenient solution for people who have a router at home or place of residence and a wireless network that can be used at no extra charge. The shockproof industrial panel BiBOX-156PC2 has been equipped with standards - 802.11n, which allows transfer of files at a dizzying speed of up to 150 Mb/s.

Standards	802.11a/b/g/n
Frequencies	2.4GHz

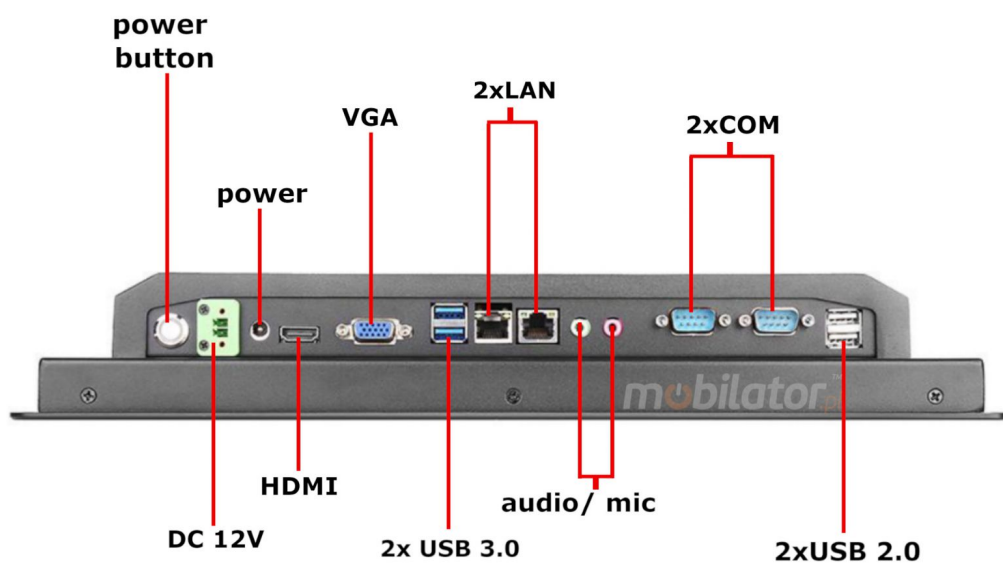
BLUETOOTH COMMUNICATION

Bluetooth enables wireless short-range communication between various electronic devices, such as the keyboard, computer, laptop, palmtop, mobile phone and many others. In the fourth version of this standard, energy consumption was reduced considerably, at the expense of lower transfer costs, and real operating coverage increased.

4G MODULE (OPTION)

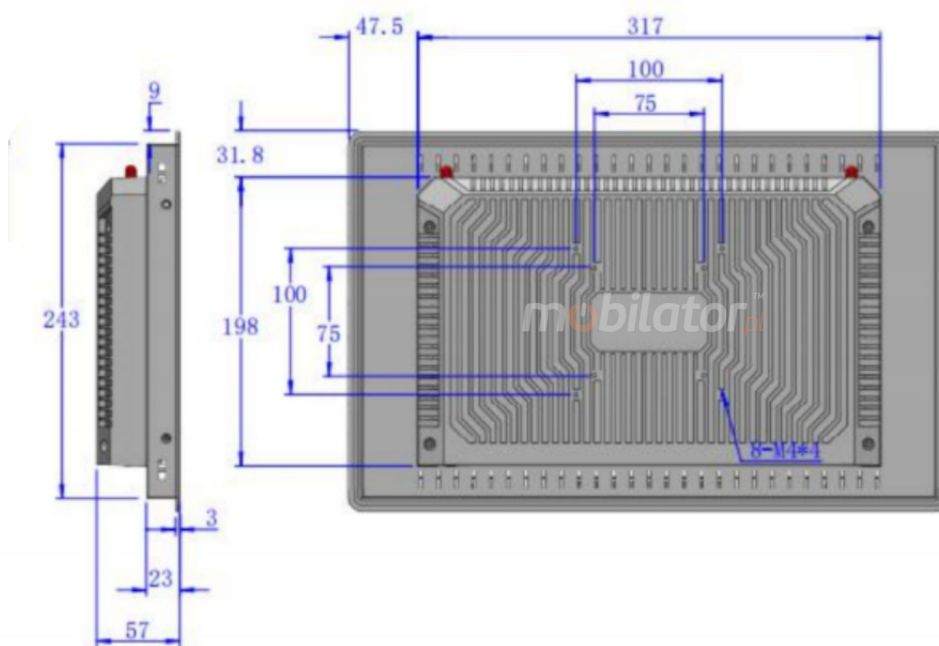
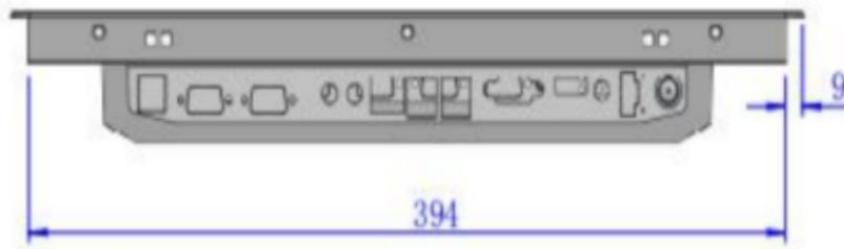
4G technology is based on a radio network with fast transmission and the rare occurrence of downtime or transfer errors. The main distinguishing feature of the 4G from its predecessor (3G) is the speed of transfer between devices. The fourth generation network offers 100 Mb / s of mobile internet speed and 25 Mb / s of packet transfer. Technology enables users, including: extremely fast radio networks, Internet access, personalized telephony, and access to modern media and games services.

CONNECTORS AND INTERFACES



* Illustrative image, Connectors: 2x USB 2.0 | 2x USB 3.0 | 2x COM | 1x LAN | 1x VGA | 1x HDMI | DC 12V

DIMENSIONS

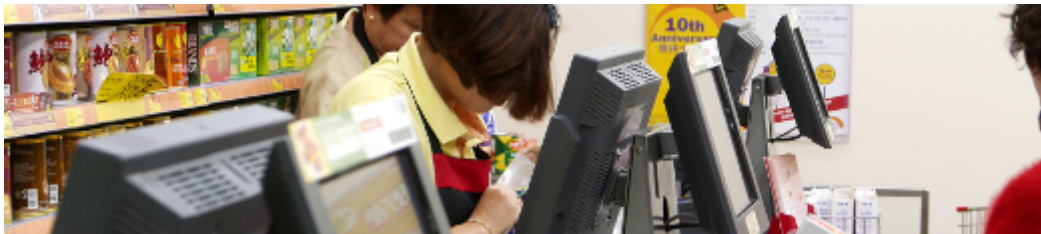


Application



TRADE AND SERVICES

PC Panel is widely used primarily in the commercial industry, for example for controlling the sales system, displaying product information on monitors or advertising on large screens. With the VESA holder in the housing there are many possibilities for its assembly, eg in stores (at the cash register) in factory halls, in a car delivering products, etc. It will certainly be used in all types of retail chains.



WAREHOUSE AND MANAGEMENT

The industrial panel computer thanks to the RS-232 interface can be used to connect many devices in the warehouse and facilitate their control. And its rugged housing is ideally suited to the harsh conditions prevailing in such rooms. No dust or dirt will prevent him from working, he will work without complaints even in a large dusty and dirty environment.



TRANSPORT AND **MOTORIZATION**

Panel computers can be used in transport by adapting it to work on 12V power supply. Then Panel PC can be used in passenger cars, buses, trams, taxis, trains and even in airplanes. Thanks to the integrated monitor, these panels perform very well in vehicles where mobility and the small size of the device are important.



Available versions

Industrial Panel PC BiBOX-156PC2 is offered in several versions adapted to different needs. By clicking on the number of the hardware configuration you will be redirected to the product with the parameters given in the table below. In addition, it is possible to create a configuration that is currently unavailable on the customer's request.

	v.1	v.2	v.3	v.4	v.5	v.6	v.7
4GB RAM	+	—	—	—	—	+	—
8GB RAM	—	+	+	—	—	—	+
16GB RAM	—	—	—	+	+	—	—
64GB SSD	+	—	—	—	—	—	—
128GB SSD	—	—	—	—	—	+	—
256GB SSD	—	+	—	—	—	—	+
512GB SSD	—	—	+	+	+	—	—
4G	—	—	—	+	—	—	—
WiFi+BT	—	+	+	—	+	+	+
WINDOWS 10 PRO	—	—	—	—	—	+	+