



Dustproof waterproof Industrial Touch Panel Computer IP67 QBOX 17C v.1  
Capacitive screen

mobikator.pl

|                                 |                                       |
|---------------------------------|---------------------------------------|
| <b>Category:</b>                | Industrial Panel PC Computers         |
| <b>Manufacturer:</b>            | Mobikator                             |
| <b>Supported OS:</b>            | Windows 7/8.1/10   Linux              |
| <b>Installed OS:</b>            | -----                                 |
| <b>Screen size:</b>             | 17"                                   |
| <b>Resolution:</b>              | 1280 x 1024                           |
| <b>Aspect ratio:</b>            | -----                                 |
| <b>Brightness:</b>              | 300 cd/m2                             |
| <b>Touchscreen:</b>             | Pojemnościowy                         |
| <b>CPU Support:</b>             | Intel Celeron J1900 (4x 2GHz)         |
| <b>Installed CPU:</b>           | Intel Celeron J1900 (4x 2GHz)         |
| <b>Graphic Card:</b>            | Intel HD Graphics                     |
| <b>Storage (HDD) Support:</b>   | 32GB/64GB/128GB/256GB SSD   500GB HDD |
| <b>Installed Storage (HDD):</b> | 32GB SSD                              |
| <b>Memory Support:</b>          | up to 8GB DDR3                        |
| <b>Installed Memory:</b>        | 2GB                                   |
| <b>IP Norm:</b>                 | IP67                                  |
| <b>IP Level (front panel):</b>  | IP67                                  |

|   |                                       |
|---|---------------------------------------|
| <b>IP Level (back panel):</b>                     | IP67                                  |
| <b>Temp:</b>                                      | 0°C ~ 60°C                            |
| <b>Storage Temp:</b>                              | -20°C ~ 80°C                          |
| <b>Humidity:</b>                                  | 10%~ 95%                              |
| <b>Anti-shock:</b>                                | -----                                 |
| <b>Anti-vibration:</b>                            | -----                                 |
| <b>Others:</b>                                    | Housing color: Silver                 |
| <b>LAN:</b>                                       | Intel 82583V                          |
| <b>Wireless LAN card:</b>                         | No (available in other configuration) |
| <b>3G:</b>  | No                                    |
| <b>Bluetooth:</b>                                 | No                                    |
| <b>Ports - rear panel:</b>                        | 1x RS-232 1x USB 2.0 1x LAN 1x DC-in  |
| <b>Ports - front panel:</b>                       | -----                                 |
| <b>Expansion:</b>                                 | -----                                 |
| <b>Power:</b>                                     | 12V DC-in                             |
| <b>Power Consumption:</b>                         | -----                                 |
| <b>Watch Dog Timer:</b>                           | -----                                 |
| <b>Mounting VESA:</b>                             | Yes                                   |
| <b>Folding Bracket (for office type working):</b> | -----                                 |
| <b>Chipset:</b>                                   | SOC                                   |
| <b>CD/DVD Drive:</b>                              | -----                                 |
| <b>TV Tuner:</b>                                  | -----                                 |
| <b>Backlight MTBF:</b>                            | LED                                   |
| <b>Contrast Ratio:</b>                            | 1000:1                                |
| <b>Viewing Angle:</b>                             | 85/85/85/70                           |
| <b>Touch Life(contacts):</b>                      | -----                                 |
| <b>Surface hardness (display):</b>                | 3H                                    |
| <b>Color Resolution:</b>                          | 16.2 M                                |

|                          |                      |
|--------------------------|----------------------|
| <b>Housing material:</b> | Stainless steel      |
| <b>Dimensions:</b>       | 395mm x 328mm x 42mm |
| <b>Fanless:</b>          | Yes                  |
| <b>Weight:</b>           | 4,5 kg               |

**6 194,59 zł**

net price: 5 036,25 zł



**SPECIFICATION AND PARAMETERS**

**DISPLAY AND TOUCH**

**RESISTANCE AND PROTECTION**

## COMMUNICATION AND CONNECTORS

## APPLICATION

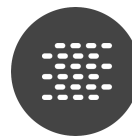
## AVAILABLE VERSIONS AND ACCESSORIES

Industrial PC panels are integrated devices consisting of a PC computer and a touch monitor. Due to their design, they can work even under severe conditions prevailing in industrial environments, such as high humidity, high dustiness, contact with water or very low or high temperatures. These panels are characterized by high efficiency and stability of operation in all conditions.



### Waterproof

The IPX7 water-resistance standard on the front panel guarantees protection of the device for contact with water.



### Dustproof

The dustproof IP6X standard on the front panel protects the panel against dust and access to hazardous parts.



### Efficient

The quad-core Intel Celeron processor supported by 2GB of RAM improves the device's performance.



### Bright Screen

The display with 300cd/ m<sup>2</sup> brightness makes the picture much more vivid and better readable when used outside in the sun.



### Wireless network\*

The panel can be connected to nearby wireless networks by



## Capacitive screen

equipping it with an optional Wi-Fi module.

The capacitive screen allows precise handling and gentle on-screen movement.

\* Optional equipment, available only in specific versions of the device.

## Specifications and parameters

| Performance      |                               |
|------------------|-------------------------------|
| Processor        | Intel Celeron J1900 (4x 2GHz) |
| Graphics card    | Intel HD Graphics             |
| Operating system | Windows 7/8/10/CE   Linux     |
| RAM              | 2GB DDR3                      |
| Drive            | 32GB SSD                      |
| Display          |                               |
| Screen           | 17" (1280x1024)               |
| Touch screen     | Resistive                     |
| Brightness       | 350cd/m <sup>2</sup>          |
| Contrast         | 1000:1                        |
| View angle       | 85/85/85/70                   |
| Hardness         | 3H                            |

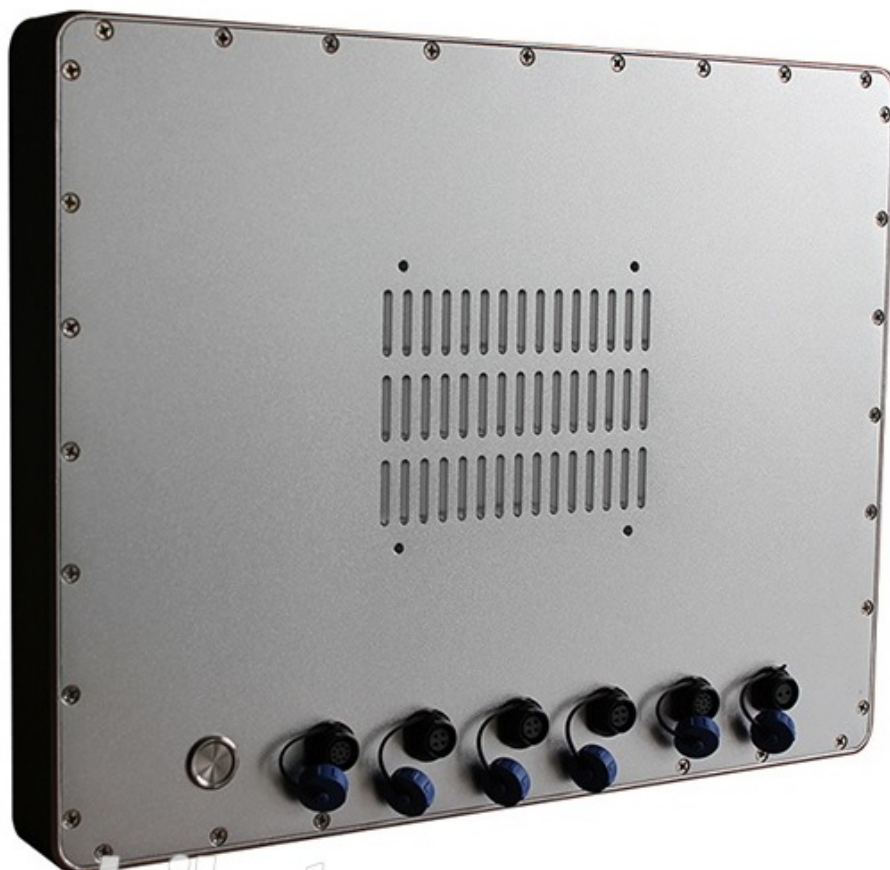
| Interfaces    |  |
|---------------|--|
| Communication | Wi-Fi *  |
| Connectors    | VGA*   RJ45   USB 2.0   RS232   DC 12V   USB 2.0*   USB 3.0* |
| Other         |  |
| Protection    | IP67   |
| Dimensions    | 395mm x 328mm x 42mm   |
| Weight        | 4,5 kg   |

\* Optional equipment, available only in specific versions of the device.



Detailed device specification is available in the "Technical data" tab.

The dust-proof industrial PC panel uses an efficient and energy-saving Intel Celeron J1900 processor. In its interior there are two cooperating cores enabling more efficient processing of many tasks at the same time. Shared cache memory in which a multi-level hierarchy is used is dynamically allocated to each processor core depending on the load. This reduces the average access time to the main memory. Improved graphics card technology allows you to enjoy movies at full resolution and HD quality.



*mob*ilator.pl



More photos in full resolution available in the "Gallery" tab.

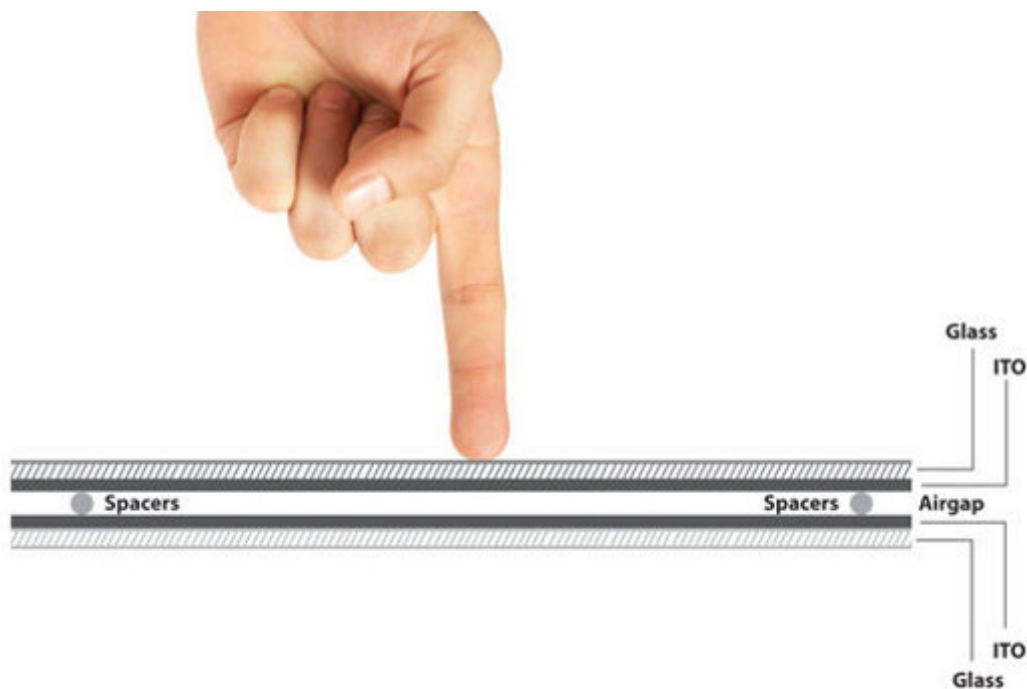
## Display and touch

Amplified, waterproof industrial computer QBOX 17 has a water-resistant and scratch-proof 17" LED screen 1280x1024 resolution offers good image quality, and high brightness in the 350 cd/m<sup>2</sup> range gives better color saturation and contrast and allows significantly improved visibility even in the case of incident The display of the resistive type provides the user with a clear image

and ease of use by touch.

## CAPACITIVE SCREEN

The capacitive screen consists of a glass coating that is covered with an insulator. Touching the surface of the touch pad with your finger causes a disturbance in the flow of electric current. This display provides very good visibility under industrial conditions. The panel can be operated with one finger or conductive material (special glove). This type of screen provides support for multi-touch technology, which is a clear convenience during work. This is due to the fact that a large number of electrodes allows accurate detection of many points of touch. You do not have to use a stronger pressure for capacitive screens, because you only need to lightly brush the screen with your finger to make the device react.



Resistance and protection

## PROTECTION STANDARD IP67

IP norm (International Protection Rating) determines the degree of protection provided by the housing of an electrical device against such factors as: access to dangerous parts inside the housing, penetration of foreign solids and splashing or immersion. The first characteristic number means that the housing protects people against access to dangerous parts located inside the device, and at the same time provides protection against penetration of foreign solids. The second characteristic digit means that the housing provides protection against the effects of water penetration.



|      |  |
|------|--|
| IP6X | Protection against access to dangerous parts with wire.<br>Dustproof protection.   |
| IPX7 | Ingress of water in harmful quantity shall not be possible when the enclosure is immersed in water under defined conditions. |

## EXTREME TEMPERATURES

PanelPC QBOX 17 is adapted for continuous operation in both very low and high temperatures in the range from 0 ° C to 60 ° C. If the device is switched off, it can already handle temperatures between -20 ° C and 80 ° C. In addition, the durable PanelPC is perfect for rooms with increased humidity, ensuring proper functioning even in the case of 95% relative humidity.

|               |               |
|---------------|---------------|
| Work temp.    | 0°C do 60°C   |
| Storage temp. | -20°C do 80°C |
| Humidity      | 10% - 95%     |

## Communication and connectors

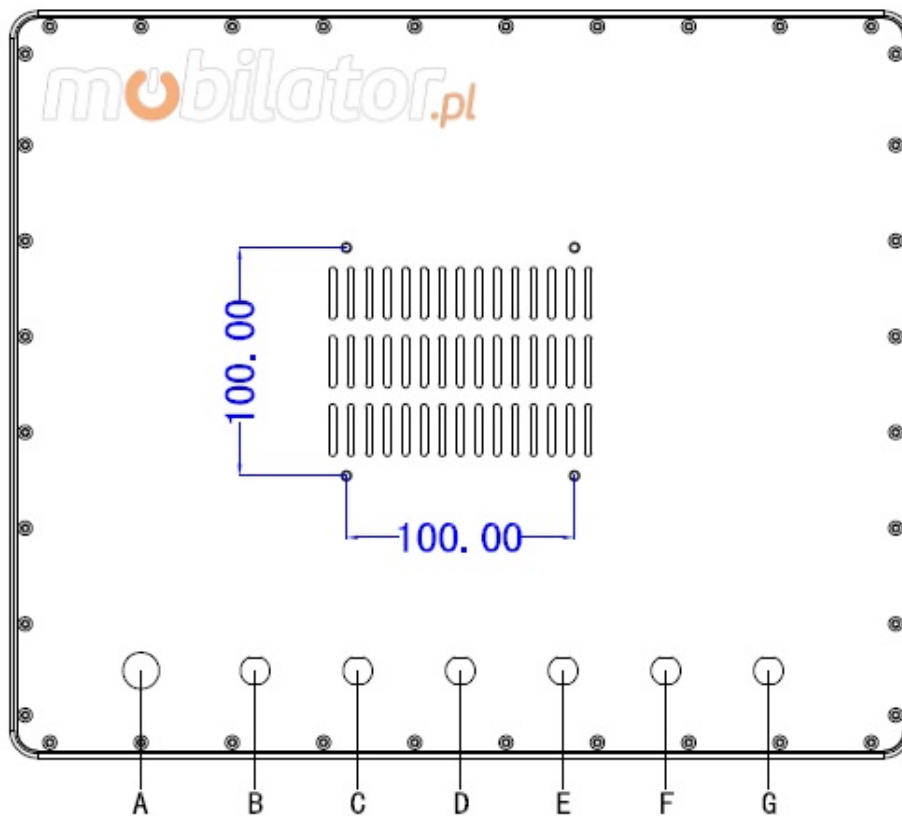
### (OPTIONAL) WIRELESS WI-FI NETWORK

The dual-band Wi-Fi module provides quick access to the network wherever you can connect to secured or open Wi-Fi networks. This is a convenient solution for people who have a router at home or place of residence and a wireless network that can be used at no extra charge. The shockproof industrial panel QBOX 17 has been equipped with standards - 802.11n, which

allows transfer of files at a dizzying speed of up to 150 Mb/s.

|             |               |
|-------------|---------------|
| Standards   | 802.11a/b/g/n |
| Frequencies | 2.4GHz   5GHz |

## CONNECTORS AND INTERFACES



### Interface Definition:

A: Power Switch

B: USB 2.0

C: USB 2.0 (optional)

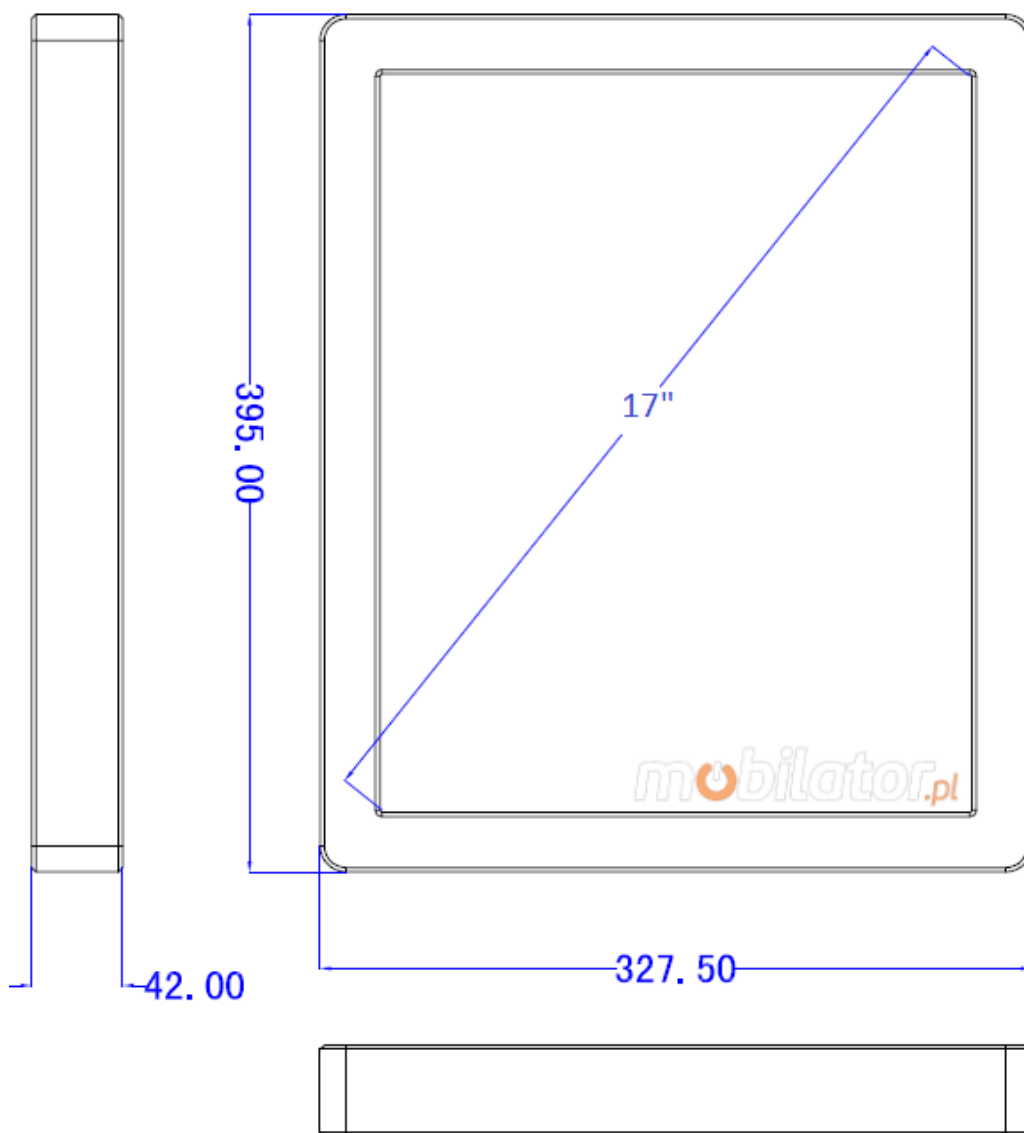
D: USB 3.0 (optional)

E: Com

F: Lan

G: DC 12V

## DIMENSIONS



Application



## **TRADE AND SERVICES**

Waterproof and dustproof PC Panel is widely used primarily in the commercial industry, for example for controlling the sales system, displaying product information on monitors or advertising on large screens. With the VESA holder in the housing there are many possibilities for its assembly, eg in stores (at the cash register) in factory halls, in a car delivering products, etc. It will certainly be used in all types of retail chains.

## **WAREHOUSE AND MANAGEMENT**

The industrial panel computer thanks to the RS232 interface can be used to connect many devices in the warehouse and facilitate their control. And its

rugged housing is ideally suited to the harsh conditions prevailing in such rooms. No dust or dirt will prevent him from working, he will work without complaints even in a large dusty and dirty environment.

## TRANSPORT AND MOTORIZATION

Panel computers can be used in transport by adapting it to work on 12V power supply. Then Panel PC can be used in passenger cars, buses, trams, taxis, trains and even in airplanes. Thanks to the integrated monitor, these panels perform very well in vehicles where mobility and the small size of the device are important.

### Available versions and accessories

Industrial industrial computer QBOX 17 is offered in several versions adapted to different needs. By clicking on the number of the hardware configuration you will be redirected to the product with the parameters given in the table below. In addition, it is possible to create a configuration that is currently unavailable on the customer's request.

|           | v.1 | v.2 | v.3 | v.4 | v.5 | v.3.1 | v.4.1 | v.5.1 | v.5.2 |
|-----------|-----|-----|-----|-----|-----|-------|-------|-------|-------|
| 2 GB RAM  | +   | -   | -   | -   | -   | -     | -     | -     | -     |
| 4 GB RAM  | -   | +   | +   | +   | +   | +     | -     | -     | -     |
| 8 GB RAM  | -   | -   | -   | -   | -   | -     | +     | +     | +     |
| 32 GB SSD | +   | -   | -   | -   | -   | -     | -     | -     | -     |

|            |   |   |   |   |   |   |   |   |   |
|------------|---|---|---|---|---|---|---|---|---|
| 64 GB SSD  | - | + | + | - | - | - | - | - | - |
| 128 GB SSD | - | - | - | + | - | - | + | - | - |
| 256 GB SSD | - | - | - | - | + | - | - | + | - |
| HDD 500 GB | - | - | - | - | - | + | - | - | + |
| Wi-Fi      | - | - | + | + | + | + | + | + | + |