

yBOX-X34-(6xLAN, 1xCOM)-2955U



Fanless mini industrial computer to control production processes – 512GB SSD, WiFi, Bluetooth – MiniPC yBOX-X34-(6xLAN, 1xCOM)-2955U v.5



Category:	MiniPC Industry
Manufacturer:	Mobilator
Supported OS:	Windows: 7/8//10 Linux
Installed OS:	-----
Chipset:	Intel Chipset
CPU Support:	Intel Celeron
Installed CPU:	Intel Celeron 2955U (4X2.42Ghz)
Graphic Card:	Intel HD Graphics
Memory Support:	DDR3L (max 16GB)
Installed Memory:	16GB RAM
Storage (HDD) Support:	SSD (SATA, M.2), HDD
Installed Storage (HDD):	512GB SSD
IP Norm:	-----
Temp:	0°C~ 70°C (SSD)
Storage temperature:	-20°C ~ 80°C (SSD)
Humidity:	10% ~ 90%
Others:	Color Black
LAN:	4x Intel i211AT LAN 10/100/1000Mbps Gigabit Ethernet

Wireless LAN card:	Yes
3G:	-----
4G LTE:	-----
Bluetooth:	Yes
Rear Panel (ports):	1xUSB 3.0 1xUSB 2.0 6xLAN 1xCOM
Front Panel (ports):	1xVGA 1xDC-12V
Expansion:	-----
Power:	12V
Watch Dog Timer:	Yes
CD/DVD Drive:	-----
TV Tuner:	-----
Dimensions:	180x175x34mm
Fanless:	Yes
Weight:	1000g

Product from the Archive - production finished

yBOX-X34-(6xLAN, 1xCOM)-2955U



SPECIFICATION

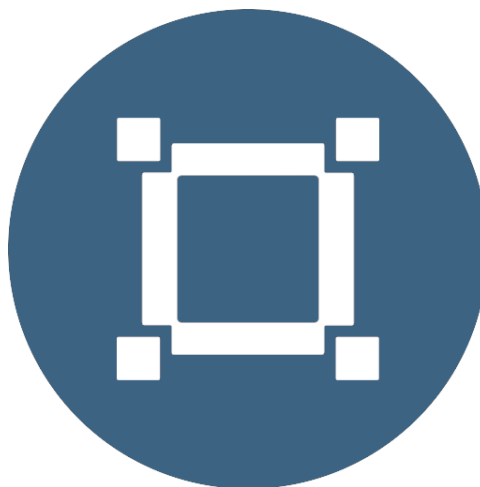
RESISTANCE AND DURABILITY

CONNECTIVITY AND COMMUNICATION

DEVICE APPLICATION

AVAILABLE VERSIONS

Small dimensions industrial computers excel in environments where dust, dirt and moisture predominate. They are ideal for applications requiring quiet operation. Small and reliable MiniPC use heat-pipe technology and aluminum fins for passive cooling. The robust mini Industrial Computer yBOX - X34 is a device designed for all industrial and non-continuous applications requiring continuous operation - 24 hours, 7 days a week.



Small dimensions

The compact housing means that the Mini PC will fit wherever you need it and is easy to carry.





Lightweight design

The computer's weight does not exceed 1.0 kg, so it can be conveniently carried in a bag or backpack.



Efficient components

The Intel Celeron 2955U quad-core CPU provides improved device performance.



Wireless network

The mini PC can be connected to nearby wireless networks by equipping it with an optional Wi-Fi module.



Quick start

A modern SSD drive will increase the speed of application programs and ensure quiet computer operation.



Passive cooling

The use of passive cooling in the Mini PC ensures silent operation and slows dust deposition.


SPECIFICATION

Mini-PC - yBOX - X34 - 2955U

Processor	Intel Celeron 2955U (4x 2.42Ghz)
Operation system	Support: Windows 7/8/10 Linux
RAM	16GB (4 8 GB DDR3L) *
Drive	512GB (64 128 256 SSD mSATA) *
Graphic card	Intel HD Graphics
Connectivity	4x Intel i211AT LAN 10/100/1000Mbps Gigabit Ethernet
Front panel	1x VGA 1xDC-12V
Rear panel	1xUSB 3.0 1xUSB 2.0 6xLAN 1xCOM
Available colors	Black

Mini-PC - yBOX - X34 - 2955U	
Dimensions	180 x 175x 34mm
Weight	1 kg

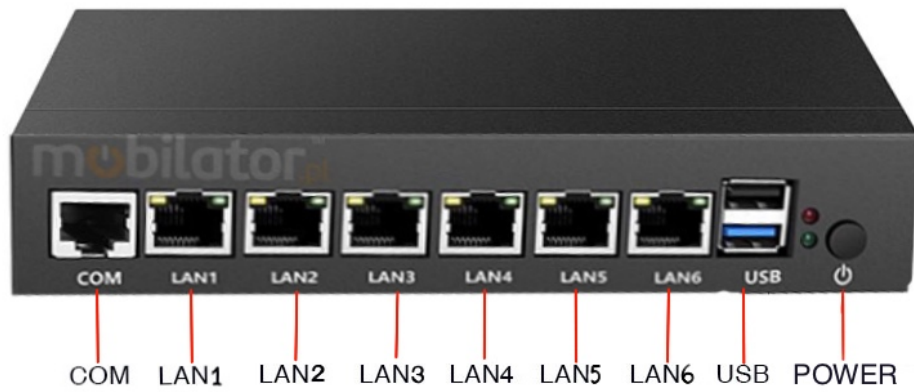
* Optional equipment, available only in other versions of the device.

 Detailed device specification is available in the "Technical data".

Efficient processor

The industrial mini-computer yBOX - X34 uses an efficient and energy-saving Intel Celeron 2955U . Inside it there are four cooperating cores enabling more efficient processing of many tasks at the same time. The shared cache memory in which the multilevel hierarchy is used is dynamically allocated to each processor core depending on the load. This reduces the average access time to the main memory. It offers improved manageability by limiting downtime and maintaining productivity by isolating computing activities into separate partitions.

Interfaces



Dimensions

Thanks to the small dimensions of the MiniPC, the yBOX - X34 is versatile for use at home, in the office and in the industry, for example in the production hall. It's literally everywhere, and thanks to the VESA mount it can be mounted on the back of the monitor to optimize the job.



Dimensions	180x175x34mm
Weight	1 kg

Passive cooling

The industrial Mini PC uses a proven cooling system, based only on solid elements, mainly heat sinks. The system uses the phenomenon of metals passing thermal energy into the environment - there are no additional moving elements in the form of eg fans. This solution ensures noiseless operation, lower failure rate and greater protection against dust and other dirt while reducing the amount of energy consumed.

RESISTANCE AND DURABILITY

Temperatures

yBOX - X34 is designed for continuous operation in both very low and high temperatures ranging from 0 ° C to 70 ° C (SSD). If the device is switched off, it can already handle temperatures in the range of -20 ° C to 80 ° C (SSD).

Work temp.	0°C to 70°C
Storage temp.	-20°C to 80°C
Humidity	10% to 90%

Mechanical damage

The passive cooling system used in the MiniPC yBOX - X34 combined with the SSD disk makes this computer very resistant to various types of mechanical injuries. An additional advantage of industrial computers is a solid construction made of high quality aluminum and specially designed in such a way that in addition to high efficiency in heat dissipation, it can also resist any external damage.

CONNECTIVITY AND COMMUNICATION

Wired LAN Network

The MiniPC yBOX - X34 has built-in Realtek network adapter that can work in a fast Gigabit Ethernet network.



WiFi

The dual-band Wi-Fi module provides quick access to the network wherever you can connect to secured or open Wi-Fi networks. This is a convenient solution for people who have a router at home or place of residence and a wireless network that can be used at no extra charge. The shockproof industrial panel yBOX - X34 has been equipped with standards - 802.11n, which allows transfer of files at a dizzying speed of up to 150 Mb/s.



Bluetooth

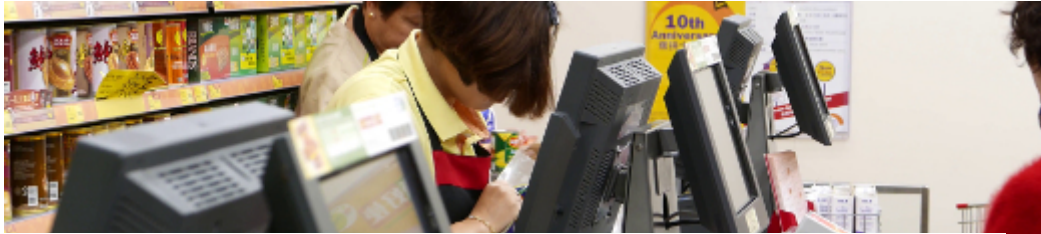
Bluetooth enables wireless short-range communication between various electronic devices, such as the keyboard, computer, laptop, palmtop, mobile phone and many others. In the fourth version of this standard, energy consumption was reduced considerably, at the expense of lower transfer costs, and real operating coverage increased.

DEVICE APPLICATION

Trade and service

Mini PC is an ideal tool to support us in the implementation of many activities in the field of trade, small dimensions increase the possibility of its adaptation

to activities such as issuing invoices or preparing documentation, which in turn allows us to convenient and optimal sales management. The VESA holder mounted to the housing provides many installation options, eg in stores (at the cash register, under the desktop, behind the LCD / LED monitor), in factory halls or in a delivery truck.



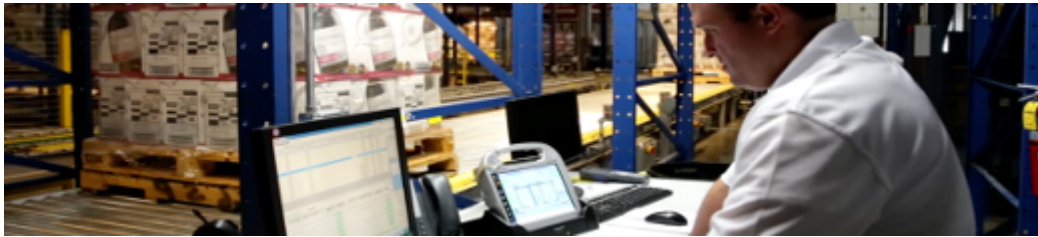
VESA



Warehouse and logistics

Thanks high performance an industrial computer can be used to connect multiple devices in a warehouse and make their management much easier. Its rugged casing and the fanless cooling system are ideal for harsh environments in such rooms. The solid construction guarantees long-lasting

work, even in environments with high dustiness and dirt.



Transport and motorization

A small industrial computer can be used in transport thanks to the ability to work on 12V power supply. Then the mini computer can be used in passenger cars, buses, trams, taxis, trains and even in airplanes. It allows you to inform the driver about the current state of the vehicle, transfer its current location to the management center, display information for passengers, etc. It performs well in vehicles where small dimensions are important.



More photos in full resolution available in the "Gallery".

AVAILABLE VERSIONS

The industrial mini-computer yBOX - X34 is offered in several versions to suit different needs. By clicking on the number of the hardware configuration you will be redirected to the product with the parameters given in the table below. In addition, it is possible to

create a configuration that is currently unavailable on the customer's request.

	v.0	v.1	v.2	v.3	v.4	v.5
4GB RAM	—	+	+	—	—	—
8GB RAM	—	—	—	+	+	—
16GB RAM	—	—	—	—	—	+
64GB SSD	—	+	—	—	—	—
128GB SSD	—	—	+	+	—	—
256GB SSD	—	—	—	—	+	—
512GB SSD	—	—	—	—	—	+
WiFi+BT	—	+	+	+	+	+