



HyBOX H4 - i5 v.3 - Industrial Mini PC without fans with Intel Core i5 processor, Windows 10 license, WiFi, modern 1TB SSD and 32GB RAM (3 YEAR WARRANTY)

Category:	MiniPC Industry
Manufacturer:	Mobilator
Supported OS:	Windows: 10/11 Linux
Installed OS:	Windows 10 license
Chipset:	Intel Chipset
CPU Support:	Intel Core i5
Installed CPU:	Intel Core i5-8250U (4x1.60GHz)
Graphic Card:	Intel UHD Graphics 620
Memory Support:	DDR4 (max.32GB)
Installed Memory:	32GB DDR4
Storage (HDD) Support:	SSD
Installed Storage (HDD):	1TB SSD
IP Norm:	-----
Temp:	-10°C do 55°C
Storage temperature:	-10°C do 55°C
Humidity:	0% ~ 95%
Others:	Color Black
LAN:	2xINTEL-I210/I211 Gigabit
Wireless LAN card:	Mini PCI-E Wi-Fi Module
3G:	-----

Bluetooth:	No
Rear Panel (ports):	2x RJ45 LAN 1x HDMI 5x RS232 COM 4x USB 3.0 1x DP 1x DC 1x EDP 1x SPK 1x Mic 2x Antena WiFi
Front Panel (ports):	1x RS232 COM 4x USB 2.0 1x LPT
Expansion:	-----
Power:	12V
Watch Dog Timer:	Yes
CD/DVD Drive:	-----
TV Tuner:	-----
Dimensions:	237 x 175 x 80 mm
Fanless:	Yes
Weight:	1650g

3 191,85 zł

net price: 2 595,00 zł



TECHNICAL SPECIFICATION

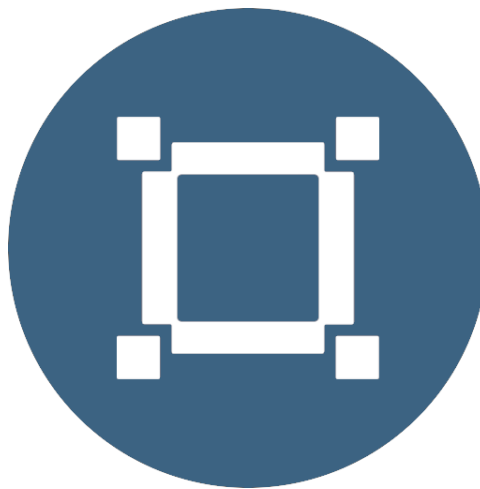
RESISTANCE AND DURABILITY

CONNECTIVITY AND COMMUNICATION

DEVICE APPLICATION

AVAILABLE VERSIONS

Small dimensions industrial computers excel in environments where dust, dirt and moisture predominate. They are ideal for applications requiring quiet operation. Small and reliable MiniPC use heat-pipe technology and aluminum fins for passive cooling. The robust mini Industrial Computer HyBOX H4 is a device designed for all industrial and non-continuous applications requiring continuous operation - 24 hours, 7 days a week.



Small dimensions

The compact housing means that the Mini PC will fit wherever you need it and is easy to carry.



Lightweight design

The computer's weight does not exceed 1.7 kg, so it can be conveniently carried in a bag or backpack.



Efficient components

The Intel Core i5-8250u quad-core CPU provides improved device performance.



Wireless network

The mini PC can be connected to nearby wireless networks by equipping it with an optional Wi-Fi module.



Quick start

A modern SSD drive will increase the speed of application programs and ensure quiet computer operation.



Passive cooling

The use of passive cooling in the Mini PC ensures silent operation and slows dust deposition.

SPECIFICATION

Mini-PC HyBOX H4

Processor	Intel Core i5-8250U (4x1.60GHz)
Operation system	Windows 10 license
RAM	DDR4: 32GB
Drive	1TB SSD
Graphic card	Intel UHD Graphics 620
Connectivity	WLAN: Mini PCI-E Wi-Fi Module LAN; 2xINTEL-I210/I211 Gigabit
Front panel	1x RS232 COM 4x USB 2.0 1x LPT
Rear panel	2x RJ45 LAN 1x HDMI 5x RS232 COM 4x USB 3.0 1x DP 1x DC 1x EDP 1x SPK 1x Mic 2x Antena WiFi
Available colors	Black

Mini-PC HyBOX H4

Dimensions	237 x 175 x 80 mm
Weight	1.65 kg



Detailed device specification is available in the "Technical data".

Efficient processor



The industrial mini-computer HyBOX H4 uses an efficient and energy-saving Intel Core i5-8250u processor. Inside it there are four cooperating cores enabling more efficient processing of many tasks at the same time. The shared cache memory in which the multilevel hierarchy is used is dynamically allocated to each processor core depending on the load. This reduces the average access time to the main memory.

Interfaces



Dimensions



Thanks to the small dimensions of the MiniPC, the is versatile for use at home, in the office and in the industry, for example in

the production hall. It's literally everywhere, and thanks to the VESA mount it can be mounted on the back of the monitor to optimize the job.

Dimensions	237 x 175 x 80 mm
Weight	1650g

Passive cooling

The industrial Mini PC uses a proven cooling system, based only on solid elements, mainly heat sinks. The system uses the phenomenon of metals passing thermal energy into the environment - there are no additional moving elements in the form of eg fans. This solution ensures noiseless operation, lower failure rate and greater protection against dust and other dirt while reducing the amount of energy consumed.

RESISTANCE AND DURABILITY



Temperatures

is designed for continuous operation in both very low and high temperatures ranging from -10°C to 55°C. If the device is switched off, it can already handle temperatures in the range of -10°C to 55°C

Work temp.	-10°C do 55°C
Storage temp.	-10°C do 55°C
Humidity	0% to 95%

Mechanical damage

The passive cooling system used in the MiniPC HyBOX H4 combined with the non-disk SSD make this computer very resistant to various types of mechanical injuries. An additional advantage of industrial computers is a solid construction made of high quality aluminum and specially designed in such a way that in addition to high efficiency in heat dissipation, it can also resist any external damage.

CONNECTIVITY AND COMMUNICATION

Wireless network

The dual-band Wi-Fi module provides quick access to the network wherever you can connect to secured or open Wi-Fi networks. This is a convenient solution for people who have a router at home or place of residence and a

wireless network that can be used at no extra charge. Industrial mini-PC HyBOX H4

has been equipped the standard of -Mini PCI-E Wi-Fi Module , which allows transfer of files at a dizzying speed of up to 300 Mb / s.

Wired LAN Network

The MiniPC HyBOX H4 has built-in Intel network adapter that can work in a fast Gigabit Ethernet network.



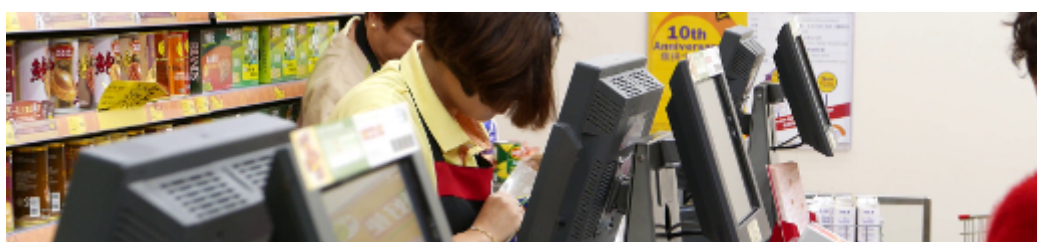
DEVICE APPLICATION

Trade and service

Mini PC is an ideal tool to support us in the implementation of many activities

in the field of trade, small dimensions increase the possibility of its adaptation to activities such as issuing invoices or preparing documentation, which in turn allows us to convenient and optimal sales management. The VESA holder mounted to the housing provides many installation options, eg in stores (at the cash register, under the desktop, behind the LCD / LED monitor), in factory halls or in a delivery truck.

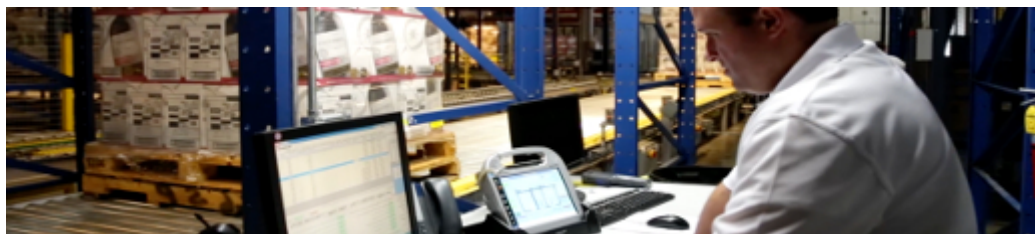
VESA



Warehouse and logistics

Thanks high performance an industrial computer can be used to connect multiple devices in a warehouse and make their management much easier. Its rugged casing and the fanless cooling system are ideal for harsh environments in such rooms. The solid construction guarantees long-lasting

work, even in environments with high dustiness and dirt.



Transport and motorization

A small industrial computer can be used in transport thanks to the ability to work on 12V power supply. Then the mini computer can be used in passenger cars, buses, trams, taxis, trains and even in airplanes. It allows you to inform the driver about the current state of the vehicle, transfer its current location to the management center, display information for passengers, etc. It performs well in vehicles where small dimensions are important.



More photos in full resolution available in the "Gallery".

AVAILABLE VERSIONS

The industrial mini-computer HyBOX H4 is offered in several versions to suit different needs. By clicking on the number of the hardware configuration you will be redirected to the product with the parameters given in the table below. In addition, it is possible to create a configuration that is currently unavailable on the customer's request.

	v.0	v.1	v.2	v.3
8GB RAM	—	+	—	—
16GB RAM	—	—	+	—
32GB RAM	—	—	—	+
128GB SSD	—	+	—	—
256GB SSD	—	—	+	—
1TB SSD	—	—	—	+
Licence Windows 10	—	—	—	+