



HyBOX TH5 - i7 Barebone - Efficient fanless industrial computer cooled by a special housing - with WiFi, inputs: 4x USB3.0, 4x USB2.0, 2xRJ45 Lan, 1x HDMI, 1x DP, 1x EDP - developed for enterprises (3 YEARS WARRANTY)

<b>Category:</b>	MiniPC Industry
<b>Manufacturer:</b>	Mobikator
<b>Supported OS:</b>	Windows 10, Linux
<b>Installed OS:</b>	-----
<b>Chipset:</b>	Intel Chipset
<b>CPU Support:</b>	Intel i7
<b>Installed CPU:</b>	<b>Intel Core i7-8550U (4x 1.80GHz)</b>
<b>Graphic Card:</b>	Intel UHD Graphics 620
<b>Memory Support:</b>	DDR4 (max. 16GB)
<b>Installed Memory:</b>	None (other version available)
<b>Storage (HDD) Support:</b>	SSD
<b>Installed Storage (HDD):</b>	None (other version available)
<b>IP Norm:</b>	-----
<b>Temp:</b>	-10°C to 55°C
<b>Storage temperature:</b>	-10°C to 55°C
<b>Humidity:</b>	0% ~ 95%
<b>Others:</b>	Color Black
<b>LAN:</b>	INTEL-I210/I211 Gigabit RJ45 Lan

<b>Wireless LAN card:</b>	Mini PCIe WiFi
<b>3G:</b>	-----
<b>Bluetooth:</b>	No
<b>Rear Panel (ports):</b>	2xAudio   2xRJ-45   4xUSB 3.0   DP   EDP   HDMI   DC   2x Anteny Wi-Fi
<b>Front Panel (ports):</b>	4xUSB 2.0
<b>Expansion:</b>	-----
<b>Power:</b>	12V
<b>Watch Dog Timer:</b>	No
<b>CD/DVD Drive:</b>	-----
<b>TV Tuner:</b>	-----
<b>Dimensions:</b>	216x175x51 mm
<b>Fanless:</b>	Yes
<b>Weight:</b>	1.8kg

**511,27 €**

net price: 415,66 €



**BAREBONE**



TECHNICAL SPECIFICATION

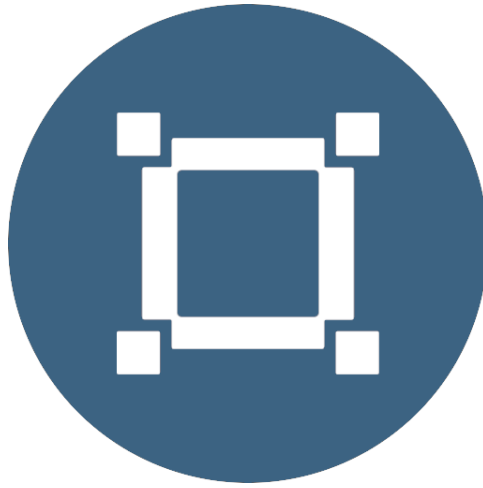
RESISTANCE AND DURABILITY

CONNECTIVITY AND COMMUNICATION

DEVICE APPLICATION

AVAILABLE VERSIONS

Small dimensions industrial computers excel in environments where dust, dirt and moisture predominate. They are ideal for applications requiring quiet operation. Small and reliable MiniPC use heat-pipe technology and aluminum fins for passive cooling. The robust mini Industrial Computer HyBOX TH5 is a device designed for all industrial and non-continuous applications requiring continuous operation - 24 hours, 7 days a week.



#### Small dimensions

The compact housing means that the Mini PC will fit wherever you need it and is easy to carry.



#### Lightweight design

The computer's weight does not exceed 1.8 kg, so it can be conveniently carried in a bag or backpack.



### Efficient components

The Intel Core i7-8550U quad-core CPU provides improved device performance.



### Wireless network

The mini PC can be connected to nearby wireless networks by equipping it with an optional Wi-Fi module.



### Quick start

\*

A modern SSD drive will increase the speed of application programs and ensure quiet computer operation.



### Passive cooling

The use of passive cooling in the Mini PC ensures silent operation and slows dust deposition.

\* Optional equipment, available in other versions of the device.

## SPECIFICATION

HyBOX TH5	
Processor	Intel Core i7-8550U (4x 1.80GHz)
Operation system	Licencja Windows 10 Pro *
RAM	None (8GB   16GB) DDR4 *
Drive	None (SSD: 256GB   512GB) *
Graphic card	Intel UHD Graphics 620
Connectivity	WLAN: 1xMini PCIe WiFi LAN: 2x INTEL-I210/I211 Gigabit RJ45 Lan
Front panel	Power ON/OFF   4xUSB 2.0
Rear panel	SPK   MIC   2xRJ-45   4xUSB 3.0   DP   EDP   HDMI   DC 2x Wi-Fi antennas
Available colors	Black
Dimensions	218x175x51 mm
Weight	1.8 kg

\* Optional equipment, available only in specific versions of the device or on request.



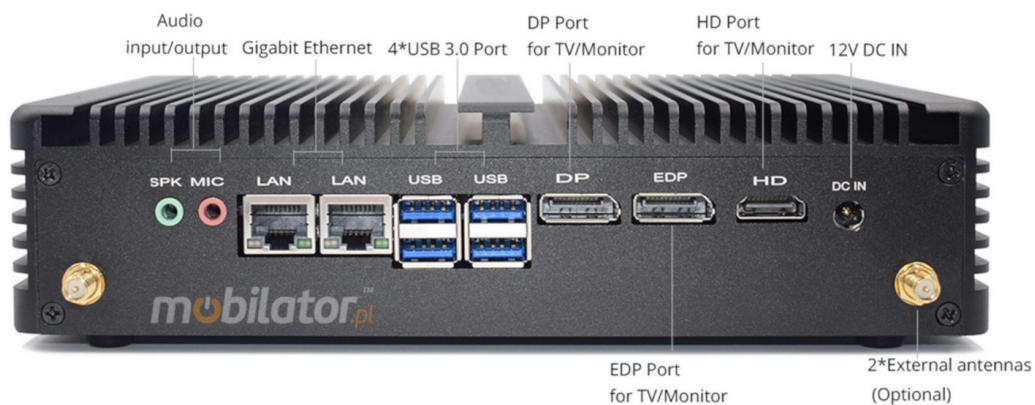
Detailed device specification is available in the "Technical data".

Efficient processor



The industrial mini-computer HyBOX TH5 uses an efficient and energy-saving Intel Core i7-8550U processor. Inside it there are four cooperating cores enabling more efficient processing of many tasks at the same time. The shared cache memory in which the multilevel hierarchy is used is dynamically allocated to each processor core depending on the load. This reduces the average access time to the main memory.

## Interfaces





## Dimensions



Thanks to the small dimensions of the MiniPC, the is versatile for use at home, in the office and in the industry, for example in the production hall. It's literally everywhere, and thanks to the VESA mount it can be mounted on the back of the monitor to optimize the job.

<b>Dimensions</b>	216x175x51 mm
<b>Weight</b>	1.8 kg

Passive coolong

The industrial Mini PC uses a proven cooling system, based only on solid elements, mainly heat sinks. The system uses the phenomenon of metals passing thermal energy into the environment - there are no additional moving elements in the form of eg fans. This solution ensures noiseless operation, lower failure rate and greater protection against dust and other dirt while reducing the amount of energy consumed.

## RESISTANCE AND DURABILITY



### Temperatures

#### HyBOX TH5

is designed for continuous operation in both very low and high temperatures ranging from -10°C to 55°C. If the device is switched off, it can already handle temperatures in the range of -10°C to 55°C.

<b>Work temp.</b>	-10°C do 55°C
<b>Storage temp.</b>	-10°C do 55°C
<b>Work Humidity</b>	0% do 95%

## Storage Humidity

0% do 95%

## Mechanical damage

The passive cooling system used in the MiniPC HyBOX TH5 make this computer very resistant to various types of mechanical injuries. An additional advantage of industrial computers is a solid construction made of high quality aluminum and specially designed in such a way that in addition to high efficiency in heat dissipation, it can also resist any external damage.

## CONNECTIVITY AND COMMUNICATION

### Wireless network

The dual-band Wi-Fi module provides quick access to the network wherever you can connect to secured or open Wi-Fi networks. This is a convenient solution for people who have a router at home or place of residence and a wireless network that can be used at no extra charge. Industrial mini-PC HyBOX TH5 has been equipped the standard of - Mini PCIe WiFi , which allows transfer of files at a dizzying speed of up to 1000 Mb/s.

### Wired LAN Network

The MiniPC HyBOX TH5

has built-in Intel network adapter that can work in a fast Gigabit Ethernet network.



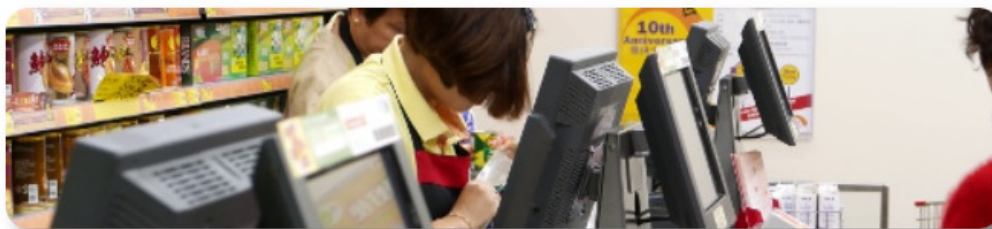
## DEVICE APPLICATION

Trade and service

Mini PC is an ideal tool to support us in the implementation of many activities in the field of trade, small dimensions increase the possibility of its adaptation to activities such as issuing invoices or preparing documentation, which in turn allows us to convenient and optimal sales management. The VESA holder mounted to the housing provides many installation options, eg in stores (at the cash register, under the desktop, behind the LCD / LED monitor), in factory halls or in a delivery truck.

# Hangable computer

Send computer stand



## Warehouse and logistics

Thanks high performance an industrial computer can be used to connect multiple devices in a warehouse and make their management much easier. Its rugged casing and the fanless cooling system are ideal for harsh environments in such rooms. The solid construction guarantees long-lasting work, even in environments with high dustiness and dirt.



## Transport and motorization

A small industrial computer can be used in transport thanks to the ability to work on 12V power supply. Then the mini computer can be used in passenger cars, buses, trams, taxis, trains and even in airplanes. It allows you to inform the driver about the current state of the vehicle, transfer its current location to the management center, display information for passengers, etc. It performs well in vehicles where small dimensions are important.



More photos in full resolution available in the "Gallery".

## AVAILABLE VERSIONS

The industrial mini-computer HyBOX TH5 is offered in several versions to suit different needs. By clicking on the number of the hardware configuration you will be redirected to the product with the parameters given in the table below.

	v.0	v.1	v.2	v.3
8GB RAM	—	+	—	—
16GB RAM	—	—	+	+
256GB SSD	—	+	+	—
512GB SSD	—	—	—	+
Windows 10 Licence	—	—	—	+



