



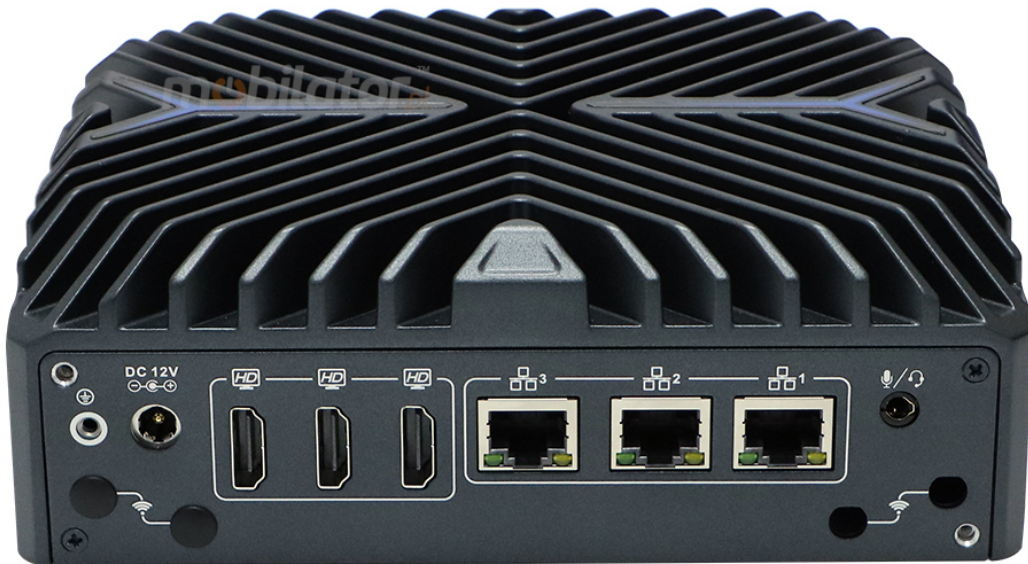
IBOX 2323N (i5) v.4 - Multifunctional desktop computer with Intel Core i5 processor, 16GB DDR5 RAM, 1TB M.2 SSD drive and WiFi6

<b>Category:</b>	MiniPC Industry
<b>Manufacturer:</b>	Mobikator
<b>Supported OS:</b>	Windows: 11   Linux
<b>Installed OS:</b>	-----
<b>Chipset:</b>	Intel Chipset
<b>CPU Support:</b>	Intel Core i5
<b>Installed CPU:</b>	Intel Core 1235U (10x 4.40GHz)
<b>Graphic Card:</b>	SSD M.2   SSD   HDD
<b>Memory Support:</b>	DDR5
<b>Installed Memory:</b>	<b>16GB</b>
<b>Storage (HDD) Support:</b>	INTEL Iris XE GRAPHICS
<b>Installed Storage (HDD):</b>	<b>1TB SSD M.2</b>
<b>IP Norm:</b>	-----
<b>Temp:</b>	-20°C do 50°C
<b>Storage temperature:</b>	-20°C do 50°C
<b>Humidity:</b>	5% ~ 95%
<b>Others:</b>	Color black
<b>LAN:</b>	3x2.5 GbE Intel i225-V

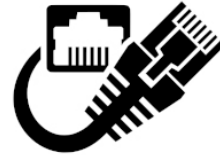
<b>Wireless LAN card:</b>	Intel-AX210(M.2) (WiFi6)
<b>3G:</b>	-----
<b>Bluetooth:</b>	No
<b>Rear Panel (ports):</b>	3x RJ-45 LAN   DC   3x HDMI
<b>Front Panel (ports):</b>	2x RS-232 COM   4x USB 3.1   SLOT SIM
<b>Expansion:</b>	-----
<b>Power:</b>	12V
<b>Watch Dog Timer:</b>	Yes
<b>CD/DVD Drive:</b>	-----
<b>TV Tuner:</b>	-----
<b>Dimensions:</b>	170 x 140 x 58 mm
<b>Fanless:</b>	Yes ( option Fan)
<b>Weight:</b>	1100g

**3 334,84 zł**

net price: 2 711,25 zł



**HDMI™ DDR 5**



## TECHNICAL SPECIFICATION

## RESISTANCE AND DURABILITY

## CONNECTIVITY AND COMMUNICATION

## DEVICE APPLICATION

## AVAILABLE VERSIONS

Small dimensions industrial computers excel in environments where dust, dirt and moisture predominate. They are ideal for applications requiring quiet operation. Small and reliable MiniPC use heat-pipe technology and aluminum fins for passive cooling. The robust mini Industrial Computer IBOX 2323N is a device designed for all industrial and non-continuous applications requiring continuous operation - 24 hours, 7 days a week.





### Small dimensions

The compact housing means that the Mini PC will fit wherever you need it and is easy to carry.



### Lightweight design

The computer's weight does not exceed 1.0 kg, so it can be conveniently carried in a bag or backpack.



### Efficient components

The Intel Core i5 1235U 10-core CPU provides improved device performance.



### Wireless network

The mini PC can be connected to nearby wireless networks by equipping it with an optional Wi-Fi module.



### Quick start

A modern SSD M.2 drive will increase the speed of application programs and ensure quiet computer operation.



### Passive cooling

operation position.

## SPECIFICATION

### Mini-PC IBOX 2323N

Processor	Intel Core i5 1235U
Operation system	Support: Windows 11

## Mini-PC IBOX 2323N

RAM	8GB DDR5 <b>*(option)</b> 16GB DDR5 32GB DDR5 <b>*(option)</b>
Drive	128 GB SSD M.2 <b>*(option)</b> 256 GB SSD M.2 <b>*(option)</b> 512 GB SSD M.2 <b>*(option)</b> 1 TB SSD M.2
Graphic card	Intel UHD Graphics
Connectivity	WLAN (WiFi6) : (Intel-AX210(M.2)) WLAN (WiFi5) : (RTL8821AE-DUAL) <b>*(option)</b> LAN: 3x 2.5 GbE Intel i225-V Intel-AX211(M.2) + BT 5.2 <b>*(option)</b>
Front panel	2x RS-232 COM   4x USB 3.1   SLOT SIM
Rear panel	3x RJ-45 LAN   DC   3x HDMI
Available colors	Black
Dimensions	170 x 140 x 58 mm
Weight	1.1 kg



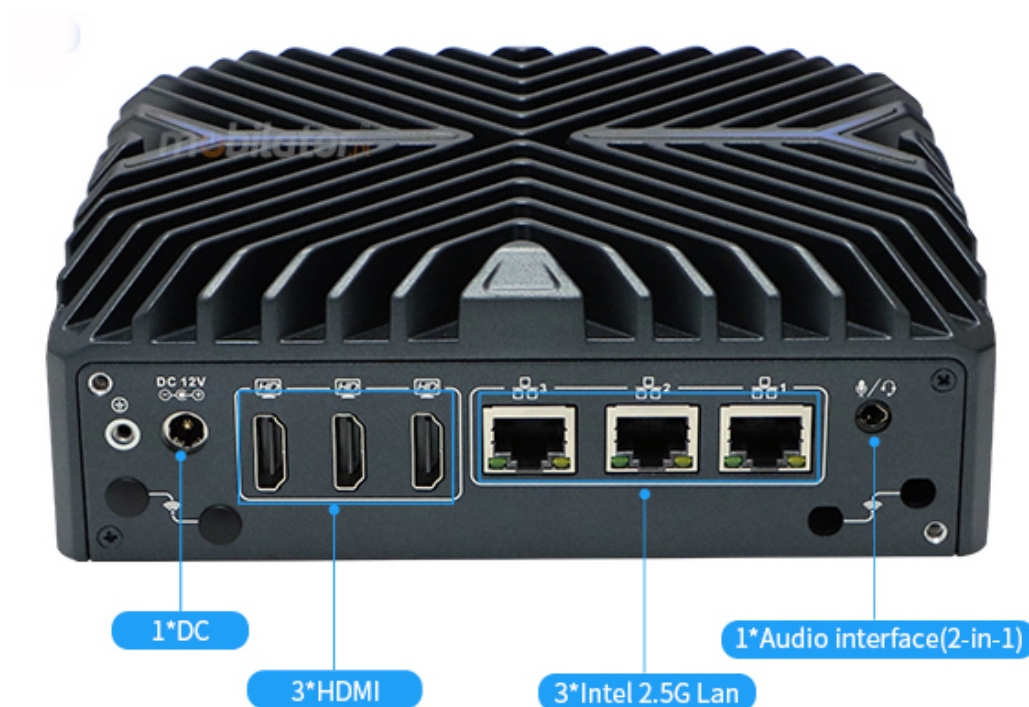
Detailed device specification is available in the "Technical data".

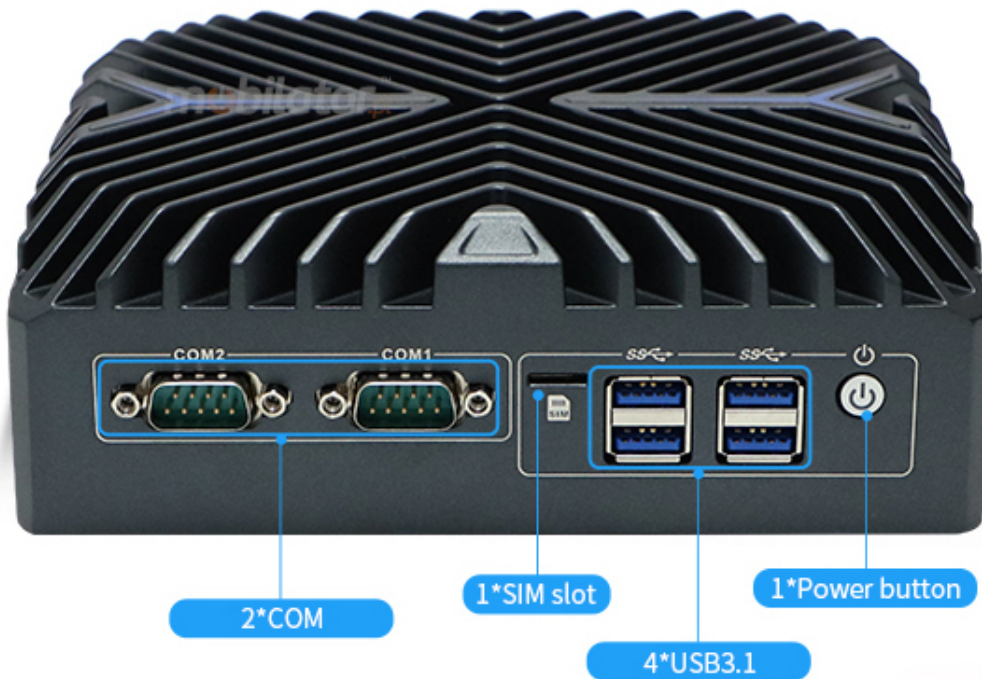
Efficient processor



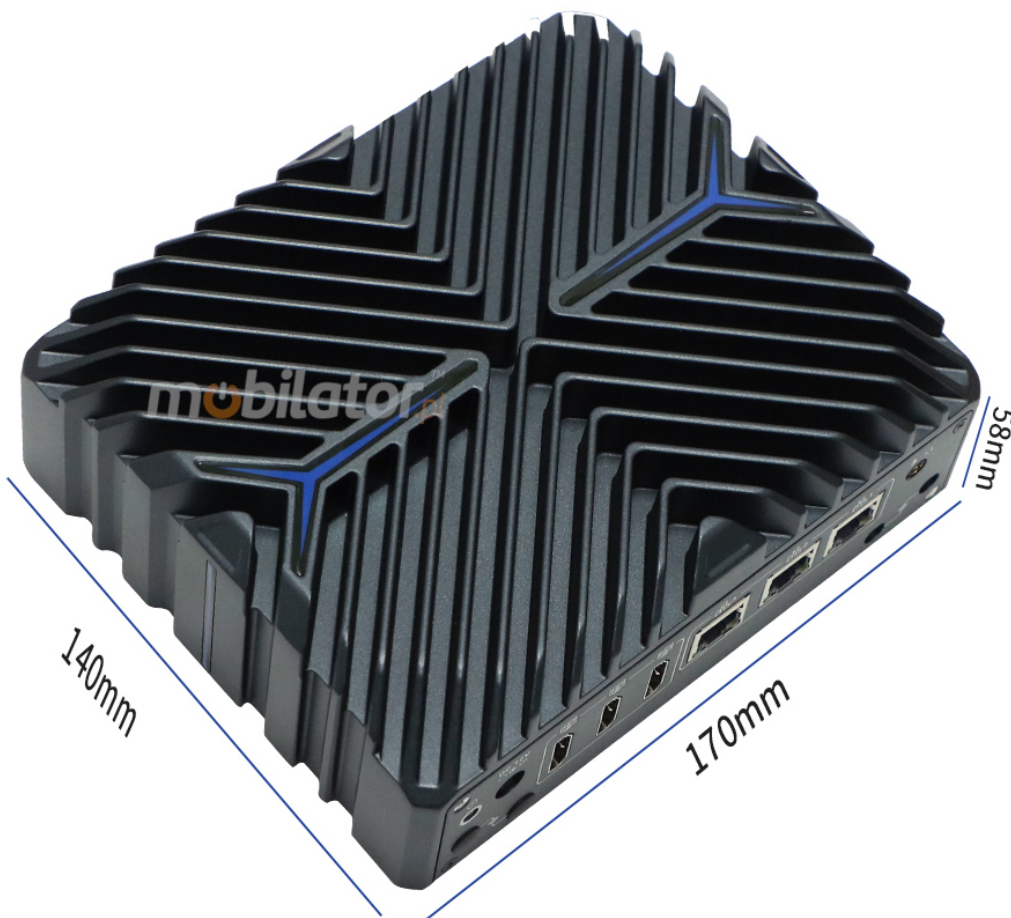
The industrial mini-computer IBOX 2323N uses an efficient and energy-saving Intel Core i5 1235U processor. Inside it there are four cooperating cores enabling more efficient processing of many tasks at the same time. The shared cache memory in which the multilevel hierarchy is used is dynamically allocated to each processor core depending on the load. This reduces the average access time to the main memory.

## Interfaces





### Dimensions



Thanks to the small dimensions of the MiniPC, the is versatile for use at

home, in the office and in the industry, for example in the production hall. It's literally everywhere, and thanks to the VESA mount it can be mounted on the back of the monitor to optimize the job.

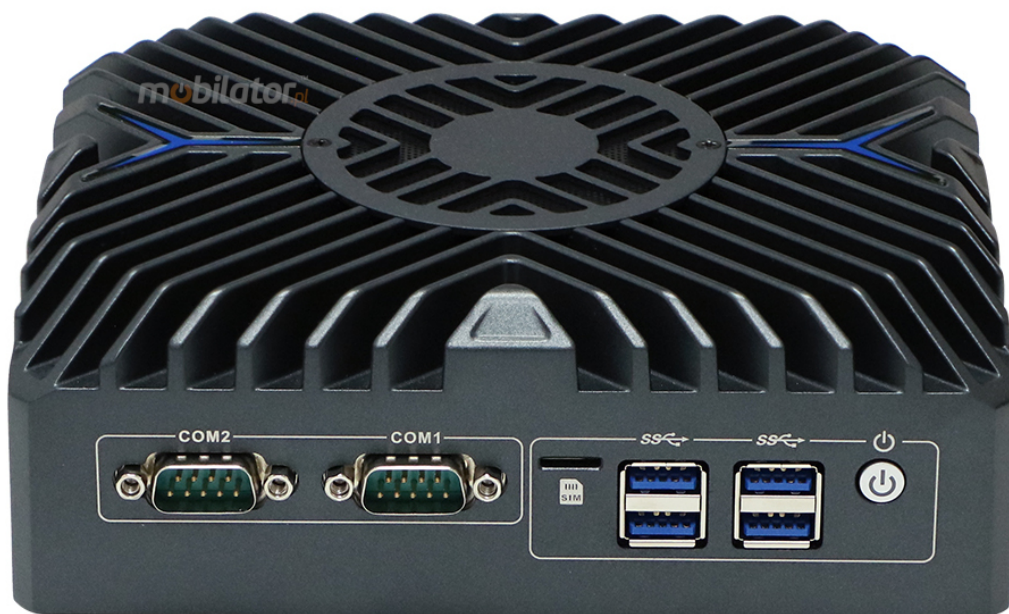
<b>Dimensions</b>	170 x 140 x 58 mm
<b>Weight</b>	1100g

Passive cooling

The industrial Mini PC uses a proven cooling system, based only on solid elements, mainly heat sink

Active cooling (option)

efficiently and effectively. This is achieved by using a fan that is integrated into the heat sink, which ensures a constant flow of air over the components, reducing their temperature and increasing their reliability.



## RESISTANCE AND DURABILITY

### Temperatures



IBOX

2323N

is designed for continuous operation in both very low and high temperatures ranging from  $-20^{\circ}\text{C}$  to  $50^{\circ}\text{C}$ . If the device is switched off, it can already handle temperatures in the range of  $-20^{\circ}\text{C}$  to  $50^{\circ}\text{C}$ .

<b>Work temp.</b>	$-20^{\circ}\text{C}$ do $50^{\circ}\text{C}$
<b>Humidity</b>	0% to 95%

### Mechanical damage

The passive cooling system used in the MiniPC IBOX 2323N combined with the SSD M.2 drive make this computer very resistant to various types of mechanical injuries. An additional advantage of industrial computers is a solid construction made of high quality aluminum and specially designed in such a way that in addition

to high efficiency in heat dissipation, it can also resist any external damage.

## CONNECTIVITY AND COMMUNICATION

### Wireless network WiFi6

The Wi-Fi module

provides quick access to the network wherever you can connect to secured or open Wi-Fi networks. This is a convenient solution for people who have a router at home or place of residence and a wireless network that can be used at no extra charge. Industrial mini-PC IBOX 2323N has been equipped the standard of - Intel-AX210(M.2) Module , which allows transfer of files at a dizzying speed of up to 800 Mb / s.

### Wired LAN Network

The MiniPC IBOX 2323N has built-in Intel network adapter that can work in a fast Gigabit Ethernet network.

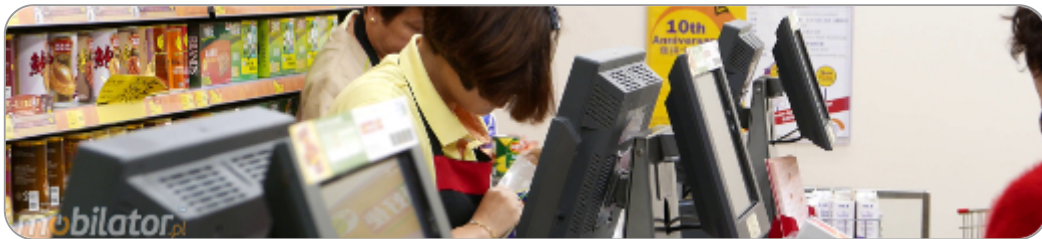


## DEVICE APPLICATION

Trade and service

Mini PC is an ideal tool to support us in the implementation of many activities in the field of trade, small dimensions increase the possibility of its adaptation to activities such as issuing invoices or preparing documentation, which in turn allows us to convenient and optimal sales management. The VESA holder mounted to the housing provides many installation options, eg in stores (at the cash register, under the desktop, behind the LCD / LED monitor), in factory halls or in a delivery truck.

# VESA



## Warehouse and logistics

Thanks high performance an industrial computer can be used to connect multiple devices in a warehouse and make their management much easier. Its rugged casing and the fanless cooling system are ideal for harsh environments in such rooms. The solid construction guarantees long-lasting work, even in environments with high dustiness and dirt.



## Transport and motorization

A small industrial computer can be used in transport thanks to the ability to work on 12V power supply. Then the mini computer can be used in passenger cars, buses, trams, taxis, trains and even in airplanes. It allows you to inform the driver about the current state of the vehicle, transfer its current location to the management center, display information for passengers, etc. It performs well in vehicles where small dimensions are important.



More photos in full resolution available in the "Gallery".

## AVAILABLE VERSIONS

The industrial mini-computer IBOX 2323N is offered in several versions to suit different needs. By clicking on the number of the hardware configuration you will be redirected to the product with the parameters given in the table below. In addition, it is possible to create a configuration that is currently unavailable on the customer's request.

	v.1	v.2	v.3	v.4	v.5	v.6	v.7	v.8
128GB SSD M.2	–	–	–	–	–	–	–	–
256GB SSD M.2	+	–	–	–	–	–	–	+
512GB SSD M.2	–	+	+	–	–	+	+	–
1TB SSD M.2	–	–	–	+	+	–	–	–
8GB RAM	+	+	–	–	–	–	+	+
16GB RAM	–	–	+	+	–	+	–	–
32GB RAM	–	–	–	–	+	–	–	–
2TB HDD	–	–	–	–	–	+	–	–
WiFi5	+	–	–	–	–	–	+	+

WiFi6	-	+	+	+	+	+	-	-
Windows 11 PRO licence	-	-	-	-	-	-	-	+
BT 5.2	-	-	+	-	+	-	-	-