

## IBOX-602 (i3 - 4000M) Barebone

**BAREBONE**



DDR3



HDMI



IBOX-602 (i3 - 4000M) Barebone - Modern industrial computer designed for industry

<b>Category:</b>	MiniPC Industry
<b>Manufacturer:</b>	Mobikator
<b>Supported OS:</b>	Windows: 7/8//10   Linux
<b>Installed OS:</b>	-----
<b>Chipset:</b>	Intel Chipset
<b>CPU Support:</b>	Intel Core i3 4000M
<b>Installed CPU:</b>	Intel Core i3 4000M ( 2x 2.4GHz)
<b>Graphic Card:</b>	Integrated Intel HD Graphic card 4600
<b>Memory Support:</b>	2*SODIMM DDR3 1600MHZ, MAX: 16G
<b>Installed Memory:</b>	<b>None</b> (Available in a different version)
<b>Storage (HDD) Support:</b>	SSD
<b>Installed Storage (HDD):</b>	<b>None</b> (Available in a different version)
<b>IP Norm:</b>	-----
<b>Temp:</b>	0°C — 60°C
<b>Storage temperature:</b>	-----
<b>Humidity:</b>	10 90% relative humidity, non-condensing
<b>Others:</b>	Black
<b>LAN:</b>	2*Intel L217 1000M LAN
<b>Wireless LAN card:</b>	(Option)

<b>3G:</b>	----
<b>4G LTE:</b>	----
<b>Bluetooth:</b>	----
<b>Rear Panel (ports):</b>	4*USB3.0*2*COM (COM can support RS422/485)2*Intel L217 LAN1*VGA1*HDMI2*DPDC-9-19V1*Mic1*Line Out
<b>Front Panel (ports):</b>	Power ON4xUSB2.04xCOM
<b>Expansion:</b>	----
<b>Power:</b>	DC-9-19V
<b>Watch Dog Timer:</b>	----
<b>CD/DVD Drive:</b>	----
<b>TV Tuner:</b>	----
<b>Dimensions:</b>	266 * 204 * 68 mm
<b>Fanless:</b>	Yes
<b>Weight:</b>	2.0 kg

Product from the Archive - production finished

## IBOX-602 (i3 - 4000M) Barebone



### TECHNICAL SPECIFICATION

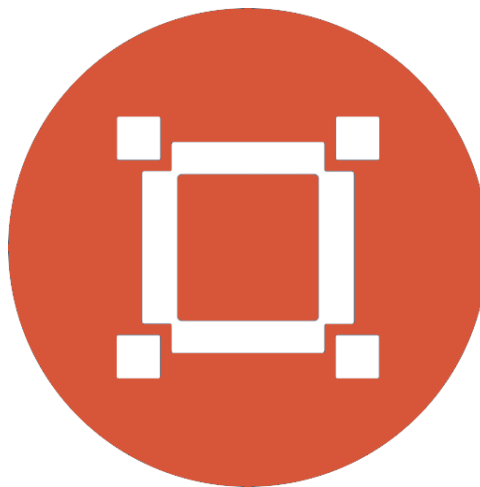
**RESISTANCE AND DURABILITY**

**CONNECTIVITY AND COMMUNICATION**

**DEVICE APPLICATION**

**AVAILABLE VERSIONS**

Small dimensions industrial computers excel in environments where dust, dirt and moisture predominate. They are ideal for applications requiring quiet operation. Small and reliable MiniPC use heat-pipe technology and aluminum fins for passive cooling. The robust mini Industrial Computer IBOX 602 is a device designed for all industrial and non-continuous applications requiring continuous operation - 24 hours, 7 days a week.



#### Small dimensions

The compact housing means that the Mini PC will fit wherever you need it and is easy to carry.



### Lightweight design

The computer's weight does not exceed 2.0 kg, so it can be conveniently carried in a bag or backpack.



### Efficient components

The

Intel i3 4000M dual-core CPU provides improved device performance.



#### Wireless network \*

The mini PC can be connected to nearby wireless networks by equipping it with an optional Wi-Fi module.



#### Quick start \*

A modern SSD drive will increase the speed of application programs and ensure quiet computer operation.



### Passive cooling

The use of passive cooling in the Mini PC ensures silent operation and slows dust deposition.

\* Optional equipment, available only in other versions of the device.

## SPECIFICATION

### Mini-PC IBOX 602

Processor	Intel Core i3 4000M (2x 2.4GHz)
Operation system	Support: Windows 7/8/10 Linux
RAM	Brak (2   4   8 GB SODIMM DDR3) *
Drive	None (SSD: 64GB   128GB   256GB   512GB) *
Graphic card	Integrated Intel HD Graphics 4600
Connectivity	WiFi * LAN: 2 x Intel L217 1000M LAN

Mini-PC IBOX 602	
Front panel	4xUSB 2.0   4xCOM   Power button
Rear panel	4xUSB 3.0   2xDP   2xLan   1xHDMI   1xVGA   Audio 2xCOM ( RS232/485 Support)
Available colors	Black
Dimensions	266 x 204 x 68 mm
Weight	2.0 kg

\* Optional equipment, available only in other versions of the device.

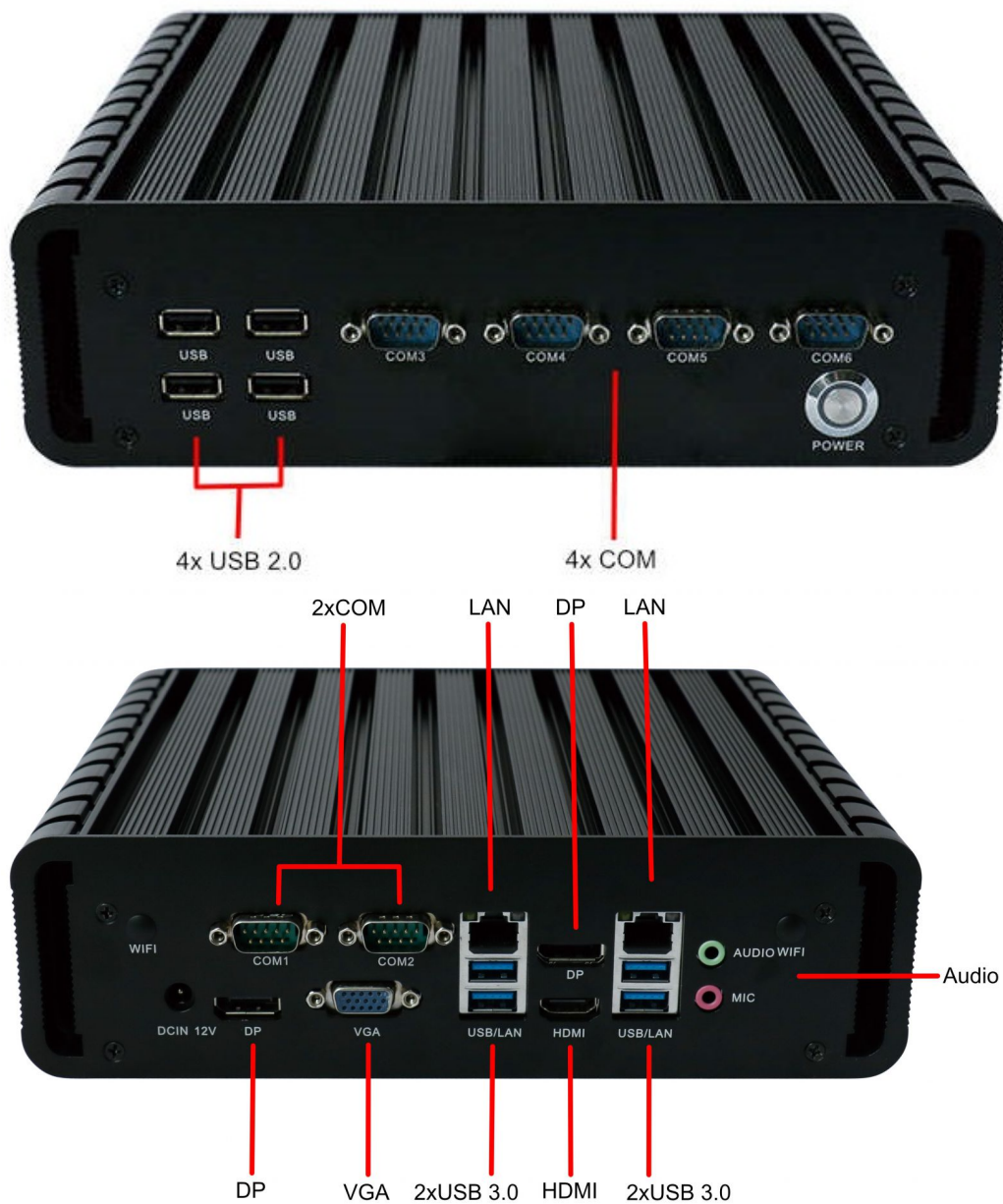


Detailed device specification is available in the "Technical data".

### Efficient processor

The industrial mini-computer IBOX 602 uses an efficient and energy-saving Intel Core i3 4000M. Inside it there are two cooperating cores enabling more efficient processing of many tasks at the same time. The shared cache memory in which the multilevel hierarchy is used is dynamically allocated to each processor core depending on the load. This reduces the average access time to the main memory. It offers improved manageability by limiting downtime and maintaining productivity by isolating computing activities into separate partitions.

### Interfaces



## Dimensions

Thanks to the small dimensions of the MiniPC, the IBOX 602 is versatile for use at home, in the office and in the industry, for example in the production hall. It's literally everywhere, and it can be mounted on the back of the monitor to optimize the job.



<b>Dimensions</b>	266 x 204 x 68 mm
<b>Weight</b>	2.0 kg

Passive cooling

The industrial Mini PC uses a proven cooling system, based only on solid elements, mainly heat sinks. The system uses the phenomenon of metals passing thermal energy into the environment - there are no additional moving elements in the form of eg fans. This solution ensures noiseless operation, lower failure rate and greater protection against dust and other dirt while reducing the amount of energy consumed.

## RESISTANCE AND DURABILITY



## Temperatures

IBOX

602

is designed for continuous operation in both very low and high temperatures ranging from 0°C to 60°C. If the device is switched off, it can already handle temperatures in the range of 0°C to 60°C.

<b>Work temp.</b>	0°C do 60°C
-	-
<b>Humidity</b>	10 90% relative humidity, non-condensing

## Mechanical damage

The  
IBOX

passive cooling system used in the MiniPC  
602

combined with the SSD\* disk makes this computer very resistant to various types of mechanical injuries. An additional advantage of industrial computers is a solid construction made of high quality aluminum and specially designed in such a way that in addition to high efficiency in heat dissipation, it can also resist any external damage.

## CONNECTIVITY AND COMMUNICATION



### Wireless network (Option)

The dual-band Wi-Fi module provides quick access to the network wherever you can connect to secured or open Wi-Fi networks. This is a convenient solution for people who have a router at home or place of residence and a wireless network that can be used at no extra charge. Industrial mini-PC IBOX 602 has been equipped the standard of - 802.11n, which allows transfer of files at a dizzying speed of up to 300 Mb / s.

### Wired LAN Network

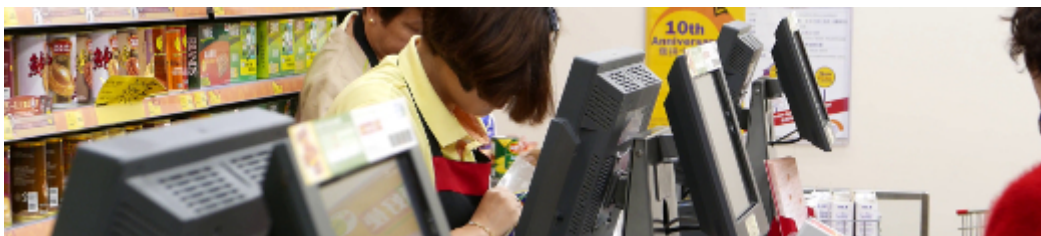
The MiniPC IBOX 602 has built-in Realtek network adapter that can work in a fast Gigabit Ethernet network.



## DEVICE APPLICATION

Trade and service

Mini PC is an ideal tool to support us in the implementation of many activities in the field of trade, small dimensions increase the possibility of its adaptation to activities such as issuing invoices or preparing documentation, which in turn allows us to convenient and optimal sales management. The VESA holder mounted to the housing provides many installation options, eg in stores (at the cash register, under the desktop), in factory halls or in a delivery truck.



Warehouse and logistics

Thanks high performance an industrial computer can be used to connect multiple devices in a warehouse and make their management much easier. Its

rugged casing and the fanless cooling system are ideal for harsh environments in such rooms. The solid construction guarantees long-lasting work, even in environments with high dustiness and dirt.



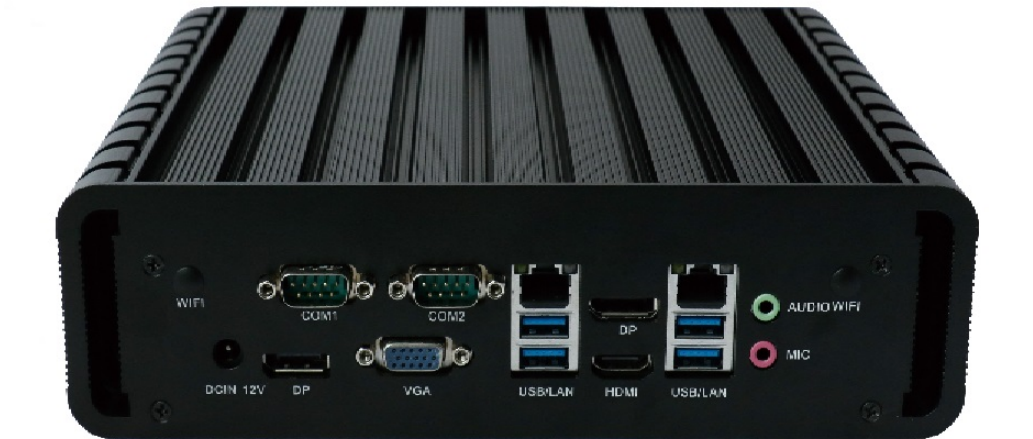
Monitor



TV



Projector



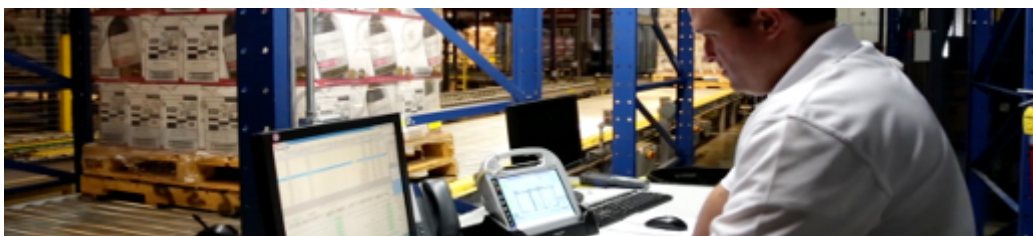
Printer



Digital signage



Monitoring



## Transport and motorization

A small industrial computer can be used in transport thanks to the ability to work on 12V power supply. Then the mini computer can be used in passenger cars, buses, trams, taxis, trains and even in airplanes. It allows you to inform the driver about the current state of the vehicle, transfer its current location to the management center, display information for passengers, etc. It performs well in vehicles where small dimensions are important.



More photos in full resolution available in the "Gallery".

## AVAILABLE VERSIONS

The industrial mini-computer IBOX 602 is offered in several versions to suit different needs. By clicking on the number of the hardware configuration you will be redirected to the product with the parameters given in the table below. In addition, it is possible to create a configuration that is currently unavailable on the customer's request.

	v.1	v.2	v.3	Barebone
WiFi	+	+	+	-
2GB DDR3	+	-	-	-
4GB DDR3	-	+	-	-
8GB DDR3	-	-	+	-
64GB SSD	+	-	-	-
256GB SSD	-	+	-	-
512GB SSD	-	-	+	-