

## IBOX N133



IBOX N133 v.5 - Customized for the miniPC industry with 8GB RAM and 256GB SSD disk, Intel Core processor, 4x USB 3.0 ports



<b>Category:</b>	MiniPC Industry
<b>Manufacturer:</b>	Mobikator
<b>Supported OS:</b>	Windows 7/8/10, Linux
<b>Installed OS:</b>	---
<b>Chipset:</b>	Intel Chipset
<b>CPU Support:</b>	-----
<b>Installed CPU:</b>	Intel Core I3 7100U (dual core quad threading, 2.4GHz)
<b>Graphic Card:</b>	Integrated Intel HD Graphics 620
<b>Memory Support:</b>	DDR4 1866/2133
<b>Installed Memory:</b>	<b>8 GB</b>
<b>Storage (HDD) Support:</b>	SSD, HDD
<b>Installed Storage (HDD):</b>	<b>256GB SSD</b>
<b>IP Norm:</b>	---
<b>Temp:</b>	0 50 (HDD) -20 50 (SSD)
<b>Storage temperature:</b>	0-50
<b>Humidity:</b>	5% 95% non-condensing
<b>LAN:</b>	YES
<b>Wireless LAN card:</b>	<b>Intel Wireless-AC7260 (optional)</b>

<b>3G:</b>	---
<b>4G LTE:</b>	---
<b>Bluetooth:</b>	optional
<b>Rear Panel (ports):</b>	6xLAN DC12V
<b>Front Panel (ports):</b>	Power ON4x USB 3.01x COM RJ451x HDMI
<b>Expansion:</b>	WIFI, BLUETOOTH
<b>Power:</b>	12V
<b>Watch Dog Timer:</b>	Yes
<b>CD/DVD Drive:</b>	-----
<b>TV Tuner:</b>	-----
<b>Dimensions:</b>	155 * 126.5 * 52.5mm
<b>Fanless:</b>	YES
<b>Weight:</b>	1.6kg

**Product from the Archive - production finished**

# IBOX N133



## TECHNICAL SPECIFICATIONS

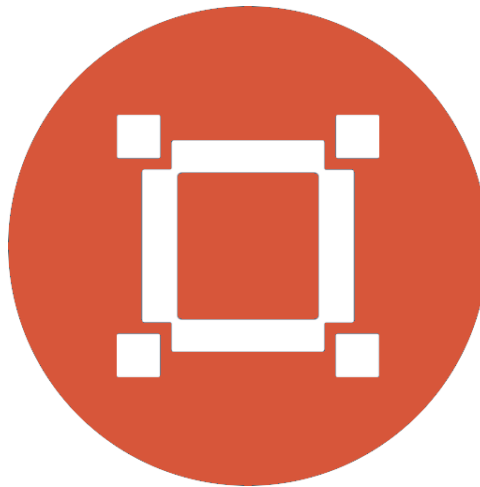
**RESILIANCE AND ENDURANCE**

**CONNECTIVITY AND COMMUNICATION**

**APPLICATION**

**AVAILABLE VERSIONS**

Small-sized industrial computers excel in environments dominated by dust, dirt and moisture. They are ideal for applications that require quiet operation. The small and reliable MiniPCs use heat-pipe technology and aluminum fins for passive cooling. The rugged mini industrial computer iBox N133 is a device designed for all industrial and other applications requiring continuous operation - 24 hours a day, 7 days a week.



#### **Small dimensions**

The compact casing makes the Mini PC fit wherever you need it and is easy to carry.





#### Light construction

The weight of the computer does not exceed 1.6 kg, so it can be conveniently carried.



#### Efficient components

The dual-core Intel Core I3 processor ensures good device performance.



### Wireless network

\*

The mini PC can be connected to nearby wireless networks thanks to equipping it with an optional Wi-Fi module.



### Quick start

A modern SSD drive will increase the speed of application programs and ensure quiet operation of the computer.



### Passive cooling

The use of passive cooling in the Mini PC ensures noiseless operation and slows down dust deposition.

## TECHNICAL SPECIFICATIONS

### Mini-PC IBOX N133

Processor	Intel Core I3 7100U (dual core quad threading, 2.4GHz)
Operating system	Support: Windows 7/8/10 Linux
RAM	4GB *   8GB   16GB *   32GB * DDR4

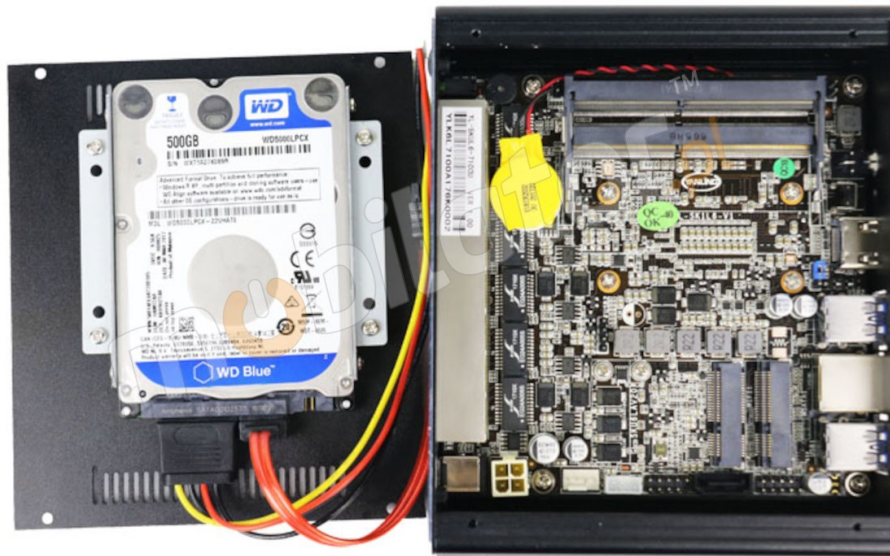
## Mini-PC IBOX N133

Hard drive	SSD: 64 *   128 *   256   512 * GB HDD: 500GB *   1TB *   2TB *
Graphics card	Integrated Intel HD Graphics 620
Communication	Bluetooth * WiFi (AC7260) * LAN: 6xRTL8111E 1000M
Connectors - front panel	4xUSB 3.0   1x RJ45 COM   Power button   HDMI
Connectors - rear panel	6x LAN   1X DC
Colors	black (can be customized)
Dimensions	155 x 126.5 x 52,5 mm
Weight	1,6 kg

\* Optional equipment, available only in specific versions of the device or on request.



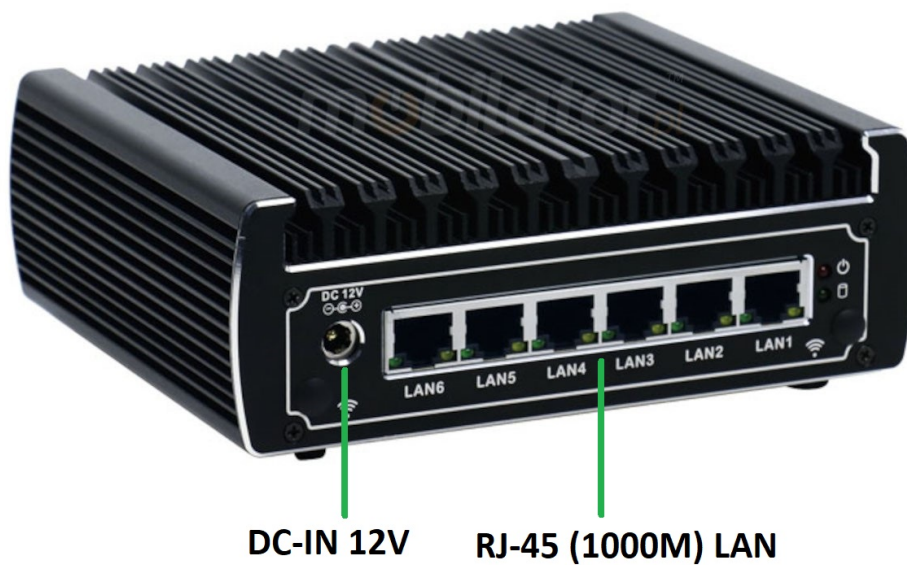
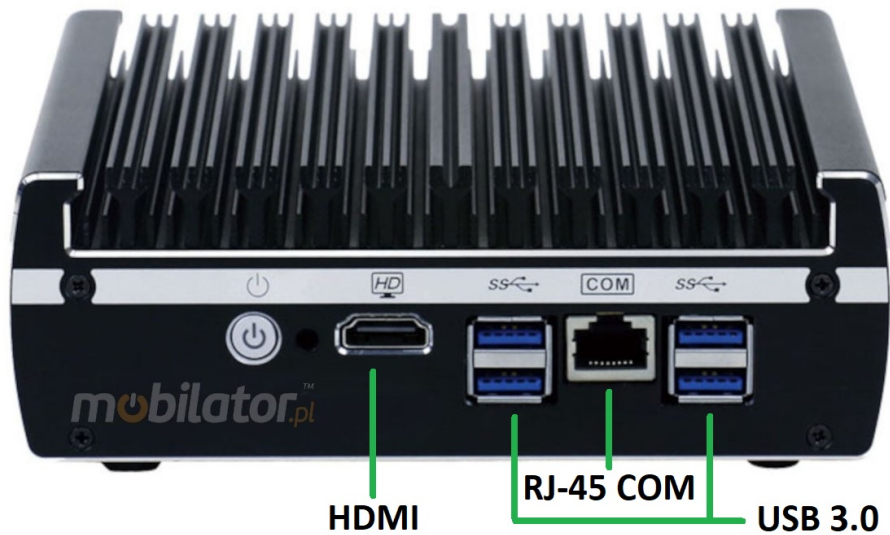
Detailed specification of the device is available in the "Technical data" tab.



## Efficient processor

The industrial mini computer IBOX N133 uses a powerful and energy-saving Intel Core i3 processor. Inside, there are two cores that work together to efficiently process multiple tasks simultaneously. A shared cache that uses a multi-level hierarchy is dynamically allocated to each processor core based on workload. This leads to a reduction in the average access time to main memory. Provides greater manageability by reducing downtime and maintaining high performance by partitioning your computing processes into separate partitions.

## Connectors | Interfaces



## Dimensions

Thanks to its small dimensions, the MiniPC is versatile both at home, in the office and in industry, for example in a production hall. It fits literally anywhere.



<b>Dimensions</b>	155 x 126,5 x 52,5 mm
<b>Net weight</b>	1,6 kg

Pass-through cooling

The industrial Mini PC uses a proven cooling system based only on solid elements, mainly heat sinks. This system uses the phenomenon of metals giving off heat energy to the environment - there are no additional moving elements such as fans. This solution ensures noiseless operation, lower failure rate and greater protection against dust and other dirt while reducing the amount of energy consumed.

## RESISTANCE AND DURABILITY



## Temperature variation

IBOX N133 is designed for continuous operation both in very low and high temperatures in the range from -20°C to 50°C SSD or 0°C to 50°C HDD.

<b>Temperature Work</b>	0°C to +50°C (HDD) or -20°C to +50°C (SSD)
<b>Resting temperature</b>	0°C to +50°C (HDD) or -20°C to +50°C (SSD)
<b>Humidity</b>	5 - 95% relative humidity, non-condensing

## Mechanical damage

The passive cooling system used in IBOX N133 in conjunction with a plateless SSD drive makes this computer very resistant to various types of mechanical damage. An additional advantage of industrial computers is a solid structure made of high-quality aluminum and specially designed in such a way that, in addition to high efficiency in heat dissipation, it can also resist any external damage.

# CONNECTIVITY AND COMMUNICATION

## Wireless network (Option)

The optional Wi-Fi module provides quick access to the network wherever you can connect to secured or open Wi-Fi networks. It is a convenient solution for people who have a router and a wireless network in their place of work or residence, which can be used at no additional charge. The industrial Mini PC IBOX N133 can be equipped with the technology standard - 802.11n, which allows you to transfer files at dizzying speeds up to 300 Mb / s.

We also have the option of extending our device with a Bluetooth 4.0 module for communication with nearby devices.



## Wired LAN

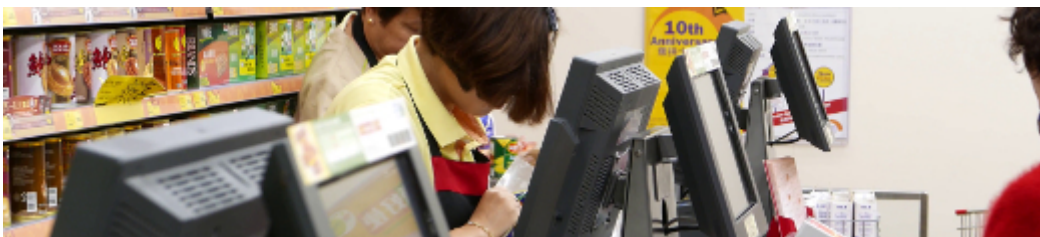
MiniPC IBOX N133 has built-in network cards that can work in a fast Gigabit Ethernet network.



## APPLICATION OF THE DEVICE

Trade and services

Mini PC is an ideal tool supporting us in the implementation of many activities in the field of trade, small dimensions increase the possibility of its adaptation to such activities as invoicing or preparing documentation, which in turn allows us to conveniently and optimally manage sales.

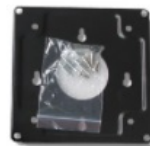


Warehouse and logistics

Thanks to its high performance, the industrial computer can be used to connect multiple devices in the warehouse and greatly facilitate their management. Its durable housing and fanless cooling system are perfect for

the harsh conditions in such rooms. The solid construction guarantees long-term operation, even in dusty and dirty environments.

VESA



Transport and automotive

A small industrial computer can be used in transport thanks to the possibility of working with a 12V power supply. Then the mini computer can be used in passenger cars, buses, trams, taxis, trains and even in airplanes. It allows the driver to be informed about the current state of the vehicle, its current position to the management center, displaying information for passengers, etc. It will fulfill its functions very well in vehicles where small dimensions of the device are important.





More photos in full resolution are available in the "Gallery" tab.



Packing list: PC+ Power Cord+Power Adapter+CD Driver+Vesa Bracket

## AVAILABLE VERSIONS

The industrial mini computer IBOX N133 is offered in several versions tailored to different needs. In addition, at the customer's request, it is possible to create a configuration currently unavailable in the offer.

	v.2	v.3	v.4	v.5	v.6	v.7	v.8	v.9	v.10
WIFI + BLUETOOTH	-	-	-	-	+	-	-	+	+
4GB RAM	+	+	-	-	-	+	-	-	-
8GB RAM	-	-	+	+	+	-	+	+	+
16GB RAM	-	-	-	-	-	-	-	-	-

32GB RAM	-	-	-	-	-	-	-	-	-
64 GB SSD	+	-	-	-	-	-	-	-	-
128 GB SSD	-	+	+	-	-	-	-	-	-
256 GB SSD	-	-	-	+	-	-	-	-	-
512 GB SSD	-	-	-	-	+	-	-	-	-
500 GB HDD	-	-	-	-	-	+	-	-	-
1 TB HDD	-	-	-	-	-	-	+	-	-
2 TB HDD	-	-	-	-	-	-	-	+	-
1TB HDD + 512GB SSD	-	-	-	-	-	-	-	-	+
	<b>v.11</b>	<b>v.12</b>	<b>v.13</b>	<b>v.14</b>	<b>v.15</b>	<b>v.16</b>	<b>v.17</b>	<b>Barebone</b>	
WIFI + BLUTOOTH	-	+	-	+	+	+	+	-	
4GB RAM	-	-	-	-	-	-	-	-	
8GB RAM	-	-	-	-	-	-	-	-	
16GB RAM	+	+	+	+	-	-	-	-	
32GB RAM	-	-	-	-	+	+	+	-	
64 GB SSD	-	-	-	-	-	-	-	-	
128 GB SSD	-	-	-	-	-	-	-	-	
256 GB SSD	+	-	-	-	-	-	-	-	
512 GB SSD	-	+	-	-	+	-	-	-	
500 GB HDD	-	-	-	-	-	-	-	-	
1 TB HDD	-	-	+	-	-	-	-	-	
2 TB HDD	-	-	-	+	-	+	-	-	
1TB HDD + 512GB SSD	-	-	-	-	-	-	+	-	