

## iBOX N3



IBOX N3 v.5 - Rugged miniPC with WiFi, BT, 8GB RAM and 256GB SSD disk, Intel Celeron processor, 4x USB 2.0, 2x USB 3.0 and 2x RJ-45 LAN



<b>Category:</b>	MiniPC Industry
<b>Manufacturer:</b>	Mobikator
<b>Supported OS:</b>	Microsoft Windows: 7/8/8.1/10, Linux
<b>Installed OS:</b>	-----
<b>Chipset:</b>	J1900 (Single Chip)
<b>CPU Support:</b>	-----
<b>Installed CPU:</b>	Intel Celeron J1900(4x2GHz)
<b>Graphic Card:</b>	Intel HD Graphics
<b>Memory Support:</b>	DDR3L (max. 8GB)
<b>Installed Memory:</b>	8GB
<b>Storage (HDD) Support:</b>	1x MSATA, 1x 2.5" HDD
<b>Installed Storage (HDD):</b>	256 GB SSD
<b>IP Norm:</b>	-----
<b>Temp:</b>	-10°C   +60°C
<b>Storage temperature:</b>	0°C - 50°C
<b>Humidity:</b>	5 ~ 95%
<b>Others:</b>	Color Black (can be customized)
<b>LAN:</b>	2x Intel RTL8111E 1000M Lan

<b>Wireless LAN card:</b>	Intel Wireless-AC7260
<b>3G:</b>	No
<b>4G LTE:</b>	No
<b>Bluetooth:</b>	BT 4.0
<b>Rear Panel (ports):</b>	2x LAN1xHDMIDC-IN 121x VGA1x Audio
<b>Front Panel (ports):</b>	5x USB2.0 1x USB3.0 Power ON/OFF1x COM
<b>Expansion:</b>	-----
<b>Power:</b>	12V
<b>Watch Dog Timer:</b>	0 ~ 255 sec
<b>CD/DVD Drive:</b>	-----
<b>TV Tuner:</b>	-----
<b>Dimensions:</b>	134 x 126 x 38.5 mm
<b>Fanless:</b>	Yes
<b>Weight:</b>	0,7 kg

**Product from the Archive - production finished**

## iBOX N3



**SSD**  
DRIVES

HDMI

Bluetooth™

WiFi™

## TECHNICAL SPECIFICATIONS

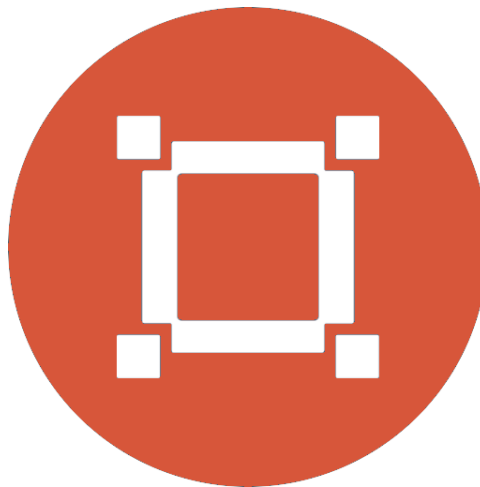
## RESILIANCE AND ENDURANCE

## CONNECTIVITY AND COMMUNICATION

## APPLICATION

## AVAILABLE VERSIONS

Small-sized industrial computers excel in environments dominated by dust, dirt and moisture. They are ideal for applications that require quiet operation. The small and reliable MiniPCs use heat-pipe technology and aluminum fins for passive cooling. The rugged mini industrial computer iBox N3 is a device designed for all industrial and other applications requiring continuous operation - 24 hours a day, 7 days a week.



### Small dimensions

The compact casing makes the Mini PC fit wherever you need it and is easy to carry.



#### Light construction

The weight of the computer does not exceed 0.7 kg, so it can be conveniently carried.



#### Efficient components

The quad-core Intel Celeron J1900 processor ensures good device performance.



#### Wireless network

The mini PC can be connected to nearby wireless networks thanks to equipping it with an optional Wi-Fi module.



#### Quick start

A modern SSD drive will increase the speed of application programs and ensure quiet operation of the computer.



### Passive cooling

The use of passive cooling in the Mini PC ensures noiseless operation and slows down dust deposition.

## TECHNICAL SPECIFICATIONS

### Mini-PC IBOX N3

Processor	Intel Celeron J1900 Quad Core   2.0 GHz   2 MB L2 Cache
Operating system	Support: Windows 7/8/10 Linux
RAM	4GB *   8GB DDR3L
Hard drive	SSD: 64 *   128 *   256   512 * GB HDD: 500GB *   1TB *   2TB *
Graphics card	Integrated Graphic Card

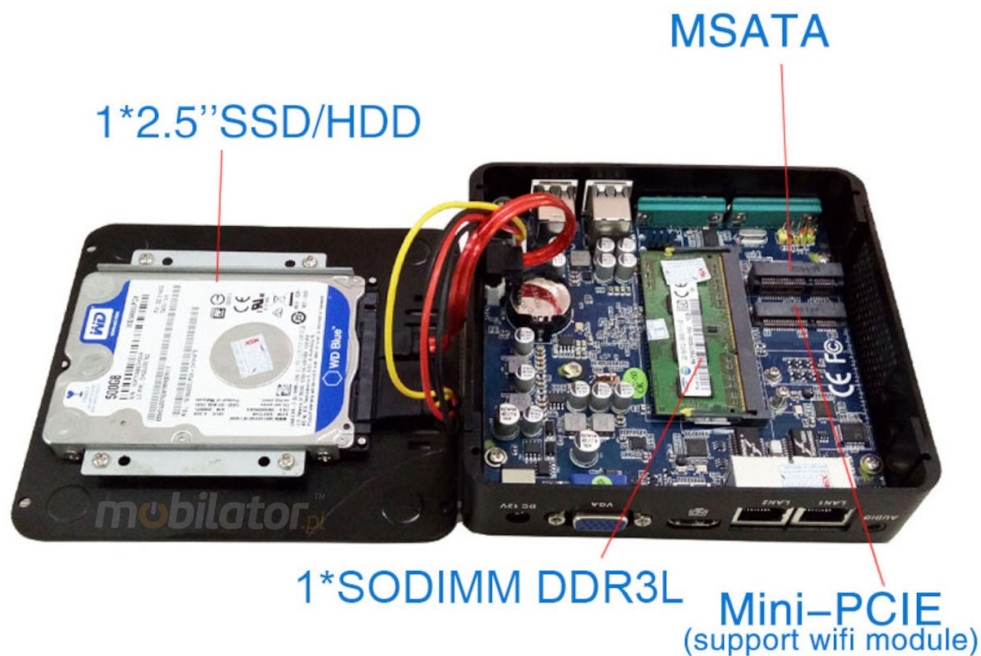
## Mini-PC IBOX N3

Communication	Bluetooth WiFi LAN: 2x Intel RTL8111E 1000M LAN
Connectors - front panel	1xUSB 3.0   5xUSB 2.0   1xCOM   Power button
Connectors - rear panel	2x LAN   1xHDMI   1xVGA   Audio
Colors	black (can be customized)
Dimensions	134 x 126 x 38,5 mm
Weight	0,7 kg

\* Optional equipment, available only in specific versions of the device or on request.



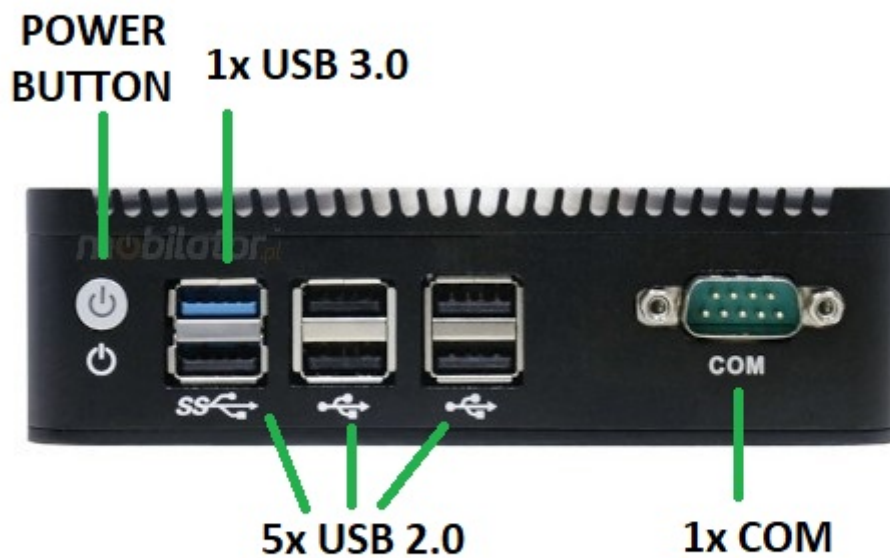
Detailed specification of the device is available in the "Technical data" tab.

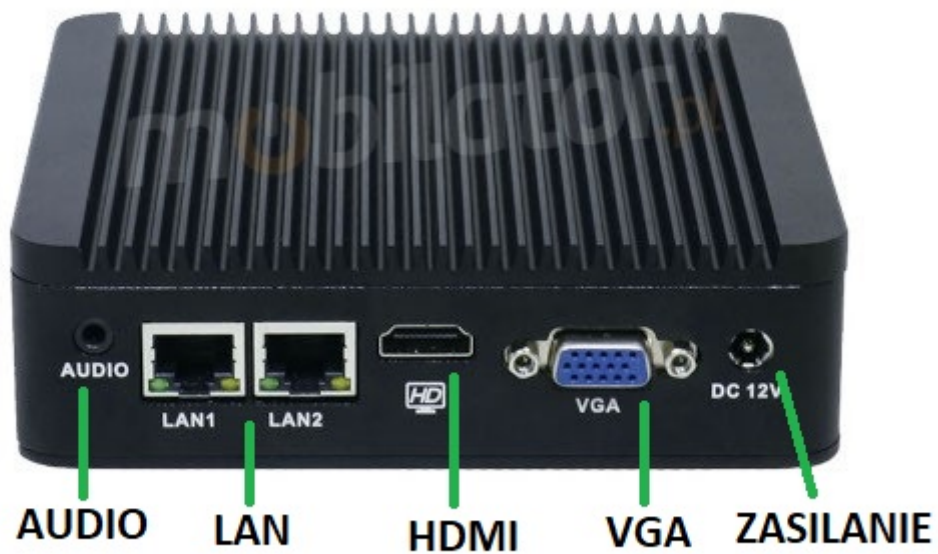


Efficient processor

The industrial mini computer IBOX N3 uses a powerful and energy-saving Intel Celeron J1900 processor. Inside, there are four cores that work together to efficiently process multiple tasks simultaneously. A shared cache that uses a multi-level hierarchy is dynamically allocated to each processor core based on workload. This leads to a reduction in the average access time to main memory. Provides greater manageability by reducing downtime and maintaining high performance by partitioning your computing processes into separate partitions.

## Connectors | Interfaces





## Dimensions

Thanks to its small dimensions, the MiniPC is versatile both at home, in the office and in industry, for example in a production hall. It fits literally anywhere.



<b>Dimensions</b>	134 x 126 x 38,5 mm
<b>Net weight</b>	0,7 kg

Pass-through cooling

The industrial Mini PC uses a proven cooling system based only on solid elements, mainly heat sinks. This system uses the phenomenon of metals giving off heat energy to the environment - there are no additional moving elements such as fans. This solution ensures noiseless operation, lower failure rate and greater protection against dust and other dirt while reducing the amount of energy consumed.

## RESISTANCE AND DURABILITY



Temperature variation

IBOX N3 is designed for continuous operation both in very low and high temperatures in the range from -10 ° C (SSD) / 10 ° C HDD to 60 ° C.

<b>Temp. Work</b>	-10°C SSD/10°C HDD to +60°C
<b>Humidity</b>	5 95% relative humidity, non-condensing

### Mechanical damage

The passive cooling system used in IBOX N3 in conjunction with a plateless SSD drive makes this computer very resistant to various types of mechanical damage. An additional advantage of industrial computers is a solid structure made of high-quality aluminum and specially designed in such a way that, in addition to high efficiency in heat dissipation, it can also resist any external damage.

## CONNECTIVITY AND COMMUNICATION

# iBOX N3



**SSD**  
DRIVES

HDMI

Bluetooth™

WiFi™

Wireless network (Option)

The Wi-Fi module provides quick access to the network wherever you can connect to secured or open Wi-Fi networks. It is a convenient solution for people who have a router and a wireless network in their place of work or residence, which can be used at no additional charge. The industrial Mini PC IBOX N3 can be equipped with the technology standard - 802.11n, which allows you to transfer files at dizzying speeds up to 300 Mb / s. We also have the option of extending our device with a Bluetooth 4.0 module for communication with nearby devices.

Wired LAN

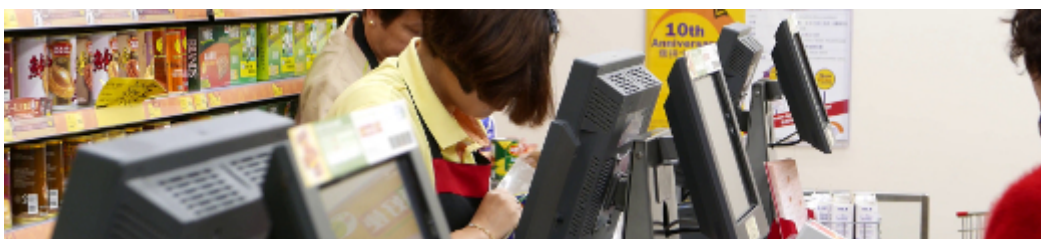
MiniPC IBOX N3 has a built-in Realtek network card that can work in a fast Gigabit Ethernet network.



## APPLICATION OF THE DEVICE

Trade and services

Mini PC is an ideal tool supporting us in the implementation of many activities in the field of trade, small dimensions increase the possibility of its adaptation to such activities as invoicing or preparing documentation, which in turn allows us to conveniently and optimally manage sales.



Warehouse and logistics

Thanks to its high performance, the industrial computer can be used to connect multiple devices in the warehouse and greatly facilitate their management. Its durable housing and fanless cooling system are perfect for

the harsh conditions in such rooms. The solid construction guarantees long-term operation, even in dusty and dirty environments.



## Transport and automotive

A small industrial computer can be used in transport thanks to the possibility of working with a 12V power supply. Then the mini computer can be used in passenger cars, buses, trams, taxis, trains and even in airplanes. It allows the driver to be informed about the current state of the vehicle, its current position to the management center, displaying information for passengers, etc. It will fulfill its functions very well in vehicles where small dimensions of the device are important.



More photos in full resolution are available in the "Gallery" tab.

## Packling List



## AVAILABLE VERSIONS

The industrial mini computer IBOX N3 is offered in several versions tailored to different needs. In addition, at the customer's request, it is possible to create a configuration currently unavailable in the offer.