

IBOX-ZPC X4(H81) i5-4460



IBOX-ZPC X4 (H81) i5-4460 v.3 - Efficient industrial computer with Intel Core i5 quad-core processor



| | |
|---------------------------------|--|
| Category: | MiniPC Industry |
| Manufacturer: | Mobikator |
| Supported OS: | Windows: 7/8//10 Linux |
| Installed OS: | ----- |
| Chipset: | Intel H81 |
| CPU Support: | Intel Core i5 4460 |
| Installed CPU: | Intel Core i5 4460 (quad core 3.2 GHz turbo boost to 3.4GHz) |
| Graphic Card: | Integrated Graphic Card |
| Memory Support: | 1*DDR3 1333/1600 MHz DIMM Max: 8 GB |
| Installed Memory: | 8GB |
| Storage (HDD) Support: | SSD |
| Installed Storage (HDD): | 512GB |
| IP Norm: | ----- |
| Temp: | -10°C — 60°C |
| Storage temperature: | ----- |

| | |
|-----------------------------|---|
| Humidity: | 5% 95% Non-Condensing |
| Others: | Black |
| LAN: | 2xRTL8111F 10/100/1000M Lan |
| Wireless LAN card: | Yes |
| 3G: | ----- |
| 4G LTE: | ----- |
| Bluetooth: | ----- |
| Rear Panel (ports): | 2xVGA2xLAN4xUSB3.02xUSB2.010x RS232 COM COM3 RS232/422/485) |
| Front Panel (ports): | Power ON2xUSB2.0 |
| Expansion: | ----- |
| Power: | AC 100 240V 47 63Hz |
| Watch Dog Timer: | ----- |
| CD/DVD Drive: | ----- |
| TV Tuner: | ----- |
| Dimensions: | 262mm x 130mm x 236mm |
| Fanless: | Yes |
| Weight: | 3.5 kg |

Product from the Archive - production finished



TECHNICAL SPECIFICATION

RESISTANCE AND DURABILITY

CONNECTIVITY AND COMMUNICATION

DEVICE APPLICATION

AVAILABLE VERSIONS

Small dimensions industrial computers excel in environments where dust, dirt and moisture predominate. They are ideal for applications requiring quiet operation. Small and reliable MiniPC use heat-pipe technology and aluminum fins for passive cooling. The robust mini Industrial Computer IBOX-ZPC X4 is a device designed for all industrial and non-continuous applications requiring continuous operation - 24 hours, 7 days a week.



Small dimensions

The compact housing means that the Mini PC will fit wherever you need it and is easy to carry.



Lightweight design

The computer's weight does not exceed 4.0 kg, so it can be conveniently carried in a bag or backpack.



Efficient components

The Intel i5 4460 quad-core CPU provides improved device performance.



Wireless network

The mini PC can be connected to nearby wireless networks by equipping it with an

optional Wi-Fi module.

SSD

Quick start

A modern SSD drive will increase the speed of application programs and ensure quiet computer operation.



Passive cooling

The use of passive cooling in the Mini PC ensures silent operation and slows dust deposition.

* Optional equipment, available only in other versions of the device.

SPECIFICATION

| Mini-PC IBOX-ZPC X4 | |
|---------------------|---|
| Processor | Intel Core i5 4460 (quad core 3.2 GHz turbo boost to 3.4GHz) |
| Operation system | Support: Windows 7/8/10 Linux |
| RAM | 8 GB 1*DDR3 DIMM |
| Drive | 512 GB SSD |
| Graphic card | Integrated Graphic Card |

| Mini-PC IBOX-ZPC X4 | |
|---------------------|--|
| Connectivity | WiFi LAN: 2 x RTL8111F 10/100/1000M Lan |
| Front panel | 2xUSB 2.0 Power button |
| Rear panel | 4xUSB 3.0 2xUSB 2.0 2xLan 2xVGA 6x RS232 COM COM3 RS232/422/485 |
| Available colors | Black |
| Dimensions | 262 x 130 x 236 mm |
| Weight | 3.5 kg |

* Optional equipment, available only in other versions of the device.



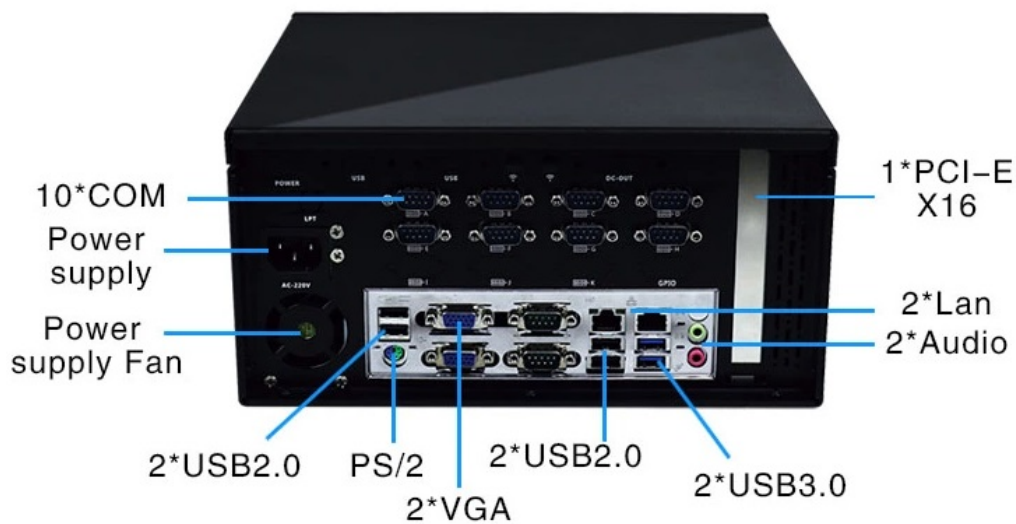
Detailed device specification is available in the "Technical data".



Efficient processor

The industrial mini-computer IBOX-ZPC X4 uses an efficient and energy-saving Intel i5 4460 processor. Inside it there are four cooperating cores enabling more efficient processing of many tasks at the same time. The shared cache memory in which the multilevel hierarchy is used is dynamically allocated to each processor core depending on the load. This reduces the average access time to the main memory. It offers improved manageability by limiting downtime and maintaining productivity by isolating computing activities into separate partitions.

Interfaces



Dimensions

Thanks to the small dimensions of the MiniPC, the IBOX-ZPC X4 is versatile for use at home, in the office and in the industry, for example in the production hall. It's literally everywhere, and it can be mounted on the back of the monitor to optimize the job.



Dimensions

262 x 130 x 236 mm

Weight

3.5 kg

Passive cooling

The industrial Mini PC uses a proven cooling system, based only on solid elements, mainly heat sinks. The system uses the phenomenon of metals passing thermal energy into the environment - there are no additional moving elements in the form of eg fans. This solution ensures noiseless operation, lower failure rate and greater protection against dust and other dirt while reducing the amount of energy consumed.

RESISTANCE AND DURABILITY



Temperatures

IBOX-ZPC

X4

is designed for continuous operation in both very low and high temperatures

ranging from -10 °C to 60°C. If the device is switched off, it can already handle temperatures in the range of -10 ° C to 60 ° C.

| | |
|-------------------|-----------------------|
| Work temp. | -10°C do 60°C |
| - | - |
| Humidity | 5% 95% Non-Condensing |

Mechanical damage

The passive cooling system used in the MiniPC IBOX-ZPC X4

combined with the SSD disk makes this computer very resistant to various types of mechanical injuries. An additional advantage of industrial computers is a solid construction made of high quality aluminum and specially designed in such a way that in addition to high efficiency in heat dissipation, it can also resist any external damage.

CONNECTIVITY AND COMMUNICATION



Wireless network (Option)

The dual-band Wi-Fi module provides quick access to the network wherever you can connect to secured or open Wi-Fi networks. This is a convenient solution for people who have a router at home or place of residence and a wireless network that can be used at no extra charge. Industrial mini-PC IBOX-ZPC

X4

has been equipped the standard of - 802.11n, which allows transfer of files at a dizzying speed of up to 300 Mb / s.

Wired LAN Network

The IBOX-ZPC

MiniPC

X4

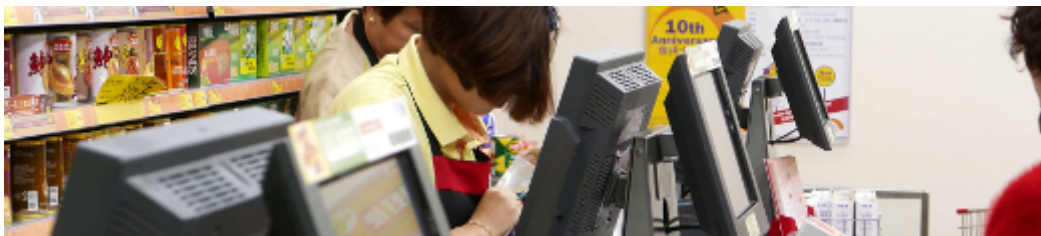
has built-in Realtek network adapter that can work in a fast Gigabit Ethernet network.



DEVICE APPLICATION

Trade and service

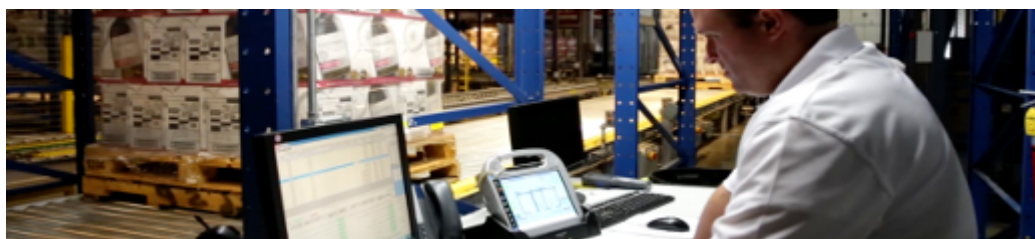
Mini PC is an ideal tool to support us in the implementation of many activities in the field of trade, small dimensions increase the possibility of its adaptation to activities such as issuing invoices or preparing documentation, which in turn allows us to convenient and optimal sales management. The VESA holder mounted to the housing provides many installation options, eg in stores (at the cash register, under the desktop), in factory halls or in a delivery truck.



Warehouse and logistics

Thanks high performance an industrial computer can be used to connect multiple devices in a warehouse and make their management much easier. Its

rugged casing and the fanless cooling system are ideal for harsh environments in such rooms. The solid construction guarantees long-lasting work, even in environments with high dustiness and dirt.



Transport and motorization

A small industrial computer can be used in transport thanks to the ability to work on 12V power supply. Then the mini computer can be used in passenger cars, buses, trams, taxis, trains and even in airplanes. It allows you to inform the driver about the current state of the vehicle, transfer its current location to the management center, display information for passengers, etc. It performs well in vehicles where small dimensions are important.



More photos in full resolution available in the "Gallery".

AVAILABLE VERSIONS

PC+Power Cord+Driver CD



The industrial mini-computer IBOX-ZPC X4 is offered in several versions to suit different needs. By clicking on the number of the hardware configuration you will be redirected to the product with the parameters given in the table below. In addition, it is possible to create a configuration that is currently unavailable on the customer's request.

| | v.1 | v.2 | v.3 | Barebone |
|----------|------------|------------|------------|-----------------|
| WiFi | | | | — |
| 2GB DDR3 | | — | — | — |

| | | | | |
|-----------|---|---|---|---|
| 4GB DDR3 | — | | — | — |
| 8GB DDR3 | — | — | | — |
| 64GB SSD | | — | — | — |
| 256GB SSD | — | | — | — |
| 512GB SSD | — | — | | — |