



## Industrial Winmate R12ID8M-RTM7CA3G

|                          |                                                                                       |
|--------------------------|---------------------------------------------------------------------------------------|
| <b>Category:</b>         | UMPC - Ruggedized                                                                     |
| <b>Manufacturer:</b>     | Winmate                                                                               |
| <b>Operating System:</b> | No - (Option - Windows 7)                                                             |
| <b>Display:</b>          | 12.1" High Quality XGA Resolution TFT-LCD Panel                                       |
| <b>Brightness:</b>       | 700nit                                                                                |
| <b>Processor:</b>        | Intel® Atom Dual Core N2800 1.86GHz                                                   |
| <b>Memory:</b>           | 2 GB DDR3-800 ( max. 4GB)                                                             |
| <b>Hard Drive:</b>       | 32GB mSATA SSD Max. up to 128GB)                                                      |
| <b>Touch screen:</b>     | Yes                                                                                   |
| <b>Durability:</b>       | MIL-810F / Full Rugged                                                                |
| <b>Drop:</b>             | MIL-STD 810F Method 516.5 / 1.20m                                                     |
| <b>Shock:</b>            | MIL-STD 810F Method 516.5                                                             |
| <b>Vibration:</b>        | MIL-STD 810F Method 514.5                                                             |
| <b>Temperature:</b>      | High temp. MIL-STD 810F Method 501.4 60°C / Low temp. MIL-STD 810F Method 502.4 -20°C |
| <b>Humidity:</b>         | 10 - 90%                                                                              |

|                                                    |                                                                                                                                                                                                               |
|----------------------------------------------------|---------------------------------------------------------------------------------------------------------------------------------------------------------------------------------------------------------------|
| <b>1D barcode scanner (reader):</b>                | No                                                                                                                                                                                                            |
| <b>2D barcode scanner (reader):</b>                | No                                                                                                                                                                                                            |
| <b>RFID scanner (reader):</b>                      | No                                                                                                                                                                                                            |
| <b>Other:</b>                                      | Fanless / Standard VESA                                                                                                                                                                                       |
| <b>Battery:</b>                                    | Li-Ion 5200mAh 11.1V                                                                                                                                                                                          |
| <b>Working time on battery:</b>                    | Battery Mark Ver.4.0.1 - 5 hrs 30 mins                                                                                                                                                                        |
| <b>Fast battery replacement ability:</b>           | Yes                                                                                                                                                                                                           |
| <b>HotSwap battery:</b>                            | No                                                                                                                                                                                                            |
| <b>LAN:</b>                                        | Gigabit-LAN BCM57780, 10/100/1000 Mbps                                                                                                                                                                        |
| <b>WLAN:</b>                                       | 802.11b/g/n + 1T1R class Bluetooth combo card                                                                                                                                                                 |
| <b>Bluetooth:</b>                                  | Yes                                                                                                                                                                                                           |
| <b>WAN:</b>                                        | Yes - Built-in 3G module                                                                                                                                                                                      |
| <b>GPS:</b>                                        | No                                                                                                                                                                                                            |
| <b>Camera:</b>                                     | No                                                                                                                                                                                                            |
| <b>In/Out:</b>                                     | 2x USB 2.0 / 1x Line in / 1x Line out / 1x Reset button / 1x power jack / 1x LAN / 1x 6 pins Terminal block connector for 2 channels Canbus / 1x COM port for RS232 / 1x SIM card Slot / 1x docking connector |
| <b>Optional accessories:</b>                       | Car AC, Docking Station, Vehicle Mount Kit VESA, Vehicle Mount Kit, Carrying Handle, Shoulder Handle, Carry Bag                                                                                               |
| <b>Docking station connector:</b>                  | Yes                                                                                                                                                                                                           |
| <b>VESA standard – holders and mounts support:</b> | Yes                                                                                                                                                                                                           |
| <b>COM port:</b>                                   | Yes - RS232                                                                                                                                                                                                   |
| <b>Magnetic card reader (MSR):</b>                 | No                                                                                                                                                                                                            |
| <b>Microchip card reader:</b>                      | No                                                                                                                                                                                                            |
| <b>Contrast:</b>                                   | 1200:1                                                                                                                                                                                                        |
| <b>Graphics card:</b>                              | Intel® Integrated                                                                                                                                                                                             |
| <b>Chipset:</b>                                    | Intel® NM10 Chipset                                                                                                                                                                                           |
| <b>BIOS:</b>                                       | AMI System BIOS                                                                                                                                                                                               |
| <b>Casing material:</b>                            | aluminium - magnesium                                                                                                                                                                                         |

|                                        |                                                 |
|----------------------------------------|-------------------------------------------------|
| <b>Flash Card Reader:</b>              | None                                            |
| <b>CD/DVD:</b>                         | No (optional by USB)                            |
| <b>Audio:</b>                          | 1.5W Speaker                                    |
| <b>Keyboard:</b>                       | No                                              |
| <b>Additional Navigation Devices :</b> | No                                              |
| <b>Color:</b>                          | Graphit                                         |
| <b>Swivel Hinge:</b>                   | No                                              |
| <b>VGA out:</b>                        | No                                              |
| <b>TV Out:</b>                         | No                                              |
| <b>TV Tuner:</b>                       | No                                              |
| <b>Security:</b>                       | Gum corners                                     |
| <b>Waterproof:</b>                     | IP 54                                           |
| <b>Sand and dust:</b>                  | IP 54                                           |
| <b>Size:</b>                           | 311 x 232 x 52 mm / 3 Kg / VESA / Vehicle Mount |
| <b>Fanless casing:</b>                 | Yes                                             |

**Product from the Archive - production finished**

# WINMATE



## Menu

Description

Functionality

Use

Resistance standard

Certificate



Founded in 1996, **Winmate** has achieved a fine reputation as a developer and manufacturer of rugged computers and industry panel LCD. Due to our product positioning in the high-tech and niche market, we have won many honors in computer product evaluation conducted throughout the world.

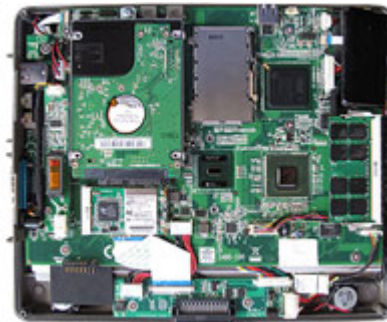


**Winmate** PCs are an ideal gadget for mobile professionals. They enable you to take notes quickly and work in close spaces. Rugged Tablet PCs provide even more benefits for mobile professionals. **R12I** is fully rugged and is certified for both military and industrial ruggedization standards.

## Description

### Guarantee

Winmate corporation give 1 year standard guarantee.  
Optional possibility 2 or 3 years.





### Case and size

Integrated GPS solution, GSM/GPRS/EDGE/3G/HSDPA, LCD (touchscreen and digitizer). In addition, IP54 certified design with a full aluminium-magnesium alloy case, helps to ensure that the **R12I** will stand up to the most rigorous environments.

### Communications

Winmate **R12I** supports the state of art wireless network feature. It basically supports the wireless LAN 802.11 b/g/n, Bluetooth has built-in optional 3G HSDPA module and GPS solution. The great expansion of WiFi technologies to wireless connect to the Internet both in professional and domestic settings through the public or private hot-spots, make your **R12I** an inseparable resource for your daily activities. You can enjoy the use of various wireless networks and wireless Internet to your heart's content with UMPC **R12I** at any time and place where the wireless Internet environment is established.



## Processor and chipset



**R12I** is supported Intel® Atom Dual Core N2800 1.86GHz, thanks to what it is unusually energy-saving, keeping near this large efficiency of work, what proof system is Windows 7 which be dedicated for this device.

[list of content...](#)

[go top...](#)

## Screen

**R12I** ships standard with a transfective sunlight viewable 12.1" LED 1024x768 screen, ideal for high ambient light conditions standard 700nits, contrast 700:1. A built-in touch screen allows finger-touch inputs directly on the screen or the use of the stylus pen for data input capability.



### Function Hot-Swap:



Everyone wants as much processing speed as possible, especially in mobile units. The battery life of our Rugged Tablet PC has been extended by our new function to change the second battery without shutting down your system. We believe it will bring immense benefits and reliability in your mobile application.

The Hot-swap second battery is secured by two large Philips screws ensuring the battery will never loosen. It has Li-Ion 2600 mAh which supports half the operating time of the main battery.

### Option accessories

**Winmate** delivers our all new Ruggedized Tablet products with two kind of series: one is Rugged Mobile PC Series for a Panel PC with battery charging solution, other series is Rugged Tablet PC Series with totally portable design with hot-swap battery for outdoor use.



Car AC



Docking Station



Vehicle Mount Kit VESA



Vehicle Mount Kit



Carrying Handle



Shoulder Handle



Carry Bag

## Functionality





### **Ergonomics:**

- Designed with about customer.
- Comfortable strong handle be irreplaceable in transportation.

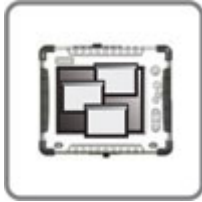
[list of content...](#)

[go top...](#)



### **Mobility:**

- WiFi 802.11b/g/n,
- Bluetooth,
- GPS.



### **Software:**

- Programmable function HotKey buttons.
- Programmable application HotTab SW
- Support: Windows XP, 7



### **Cooling:**

- Fanless.



### **Durability:**

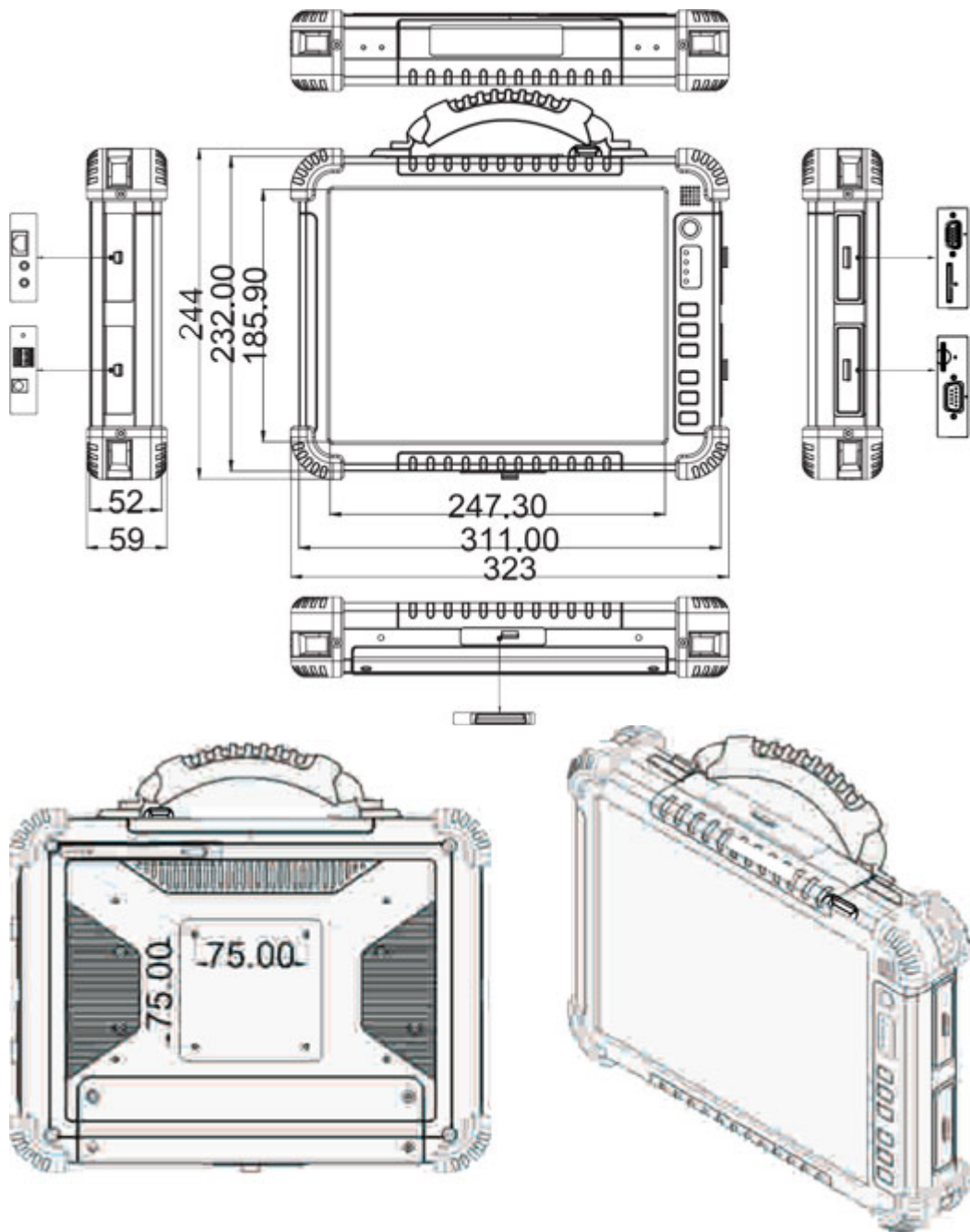
- Full Rugged aluminium-magnesium alloy case.



### **Screen:**

- 12.1" LED 1024x768 touch screen, ideal for high ambient light conditions standard 700nits, contrast 700:1





## Use

The **R12I**, rugged tablet is ideal solution for Government; industrial/commercial customers who are interested in the ability to work in rough environments yet maintain productivity without the risk of data or performance losses.

## Bluetooth Class B up to 100m CANBUS

### Sunlight Readable IP54 Water and Dust Proof



**Vehicle Examination**



**Outdoor Application**



**Military**

### Complies with MIL 810F Standard



**Logistics**

**1D/2D  
Barcode  
Reader**



**Medical Institution**

**Medical Certificate  
UL60601-1**



[list of content...](#)

[go top...](#)

# Resistance standard

The following is a top-level introduction to US Military standard **MIL-STD-810**, used to define the testing methodology for, and results required for acceptance of, rugged equipment.

MIL-STD-810 is a series of performance and manufacturing guidelines set by the US Department of Defense for military and commercial equipment and applications. These guidelines specify allowable parts and environmental condition ranges in which a device must be able to operate to meet compliance.

MIL-STD-810 is a generally accepted standard of ruggedisation testing and compliance for mobile computers and equipment.

The MIL-STD-810 test method is used to generate confidence in the environmental worthiness and overall durability of 'material system' design. The testing process follows guidelines, which include program documentation, program roles, test standards, and laboratory test method guidelines for all categories.

The laboratory test methods are broken down into 24 categories and thereafter procedures (specific tests or levels) appropriate to the environment in which the equipment is expected to be used. The compliance test categories are shown overleaf.



## **MIL-STD 461E**

Requirements for the Control of Electromagnetic Interference Characteristics of Subsystems and Equipment.

## **Vibration: MIL-STD 810F Metod 514.5**

## **Shock: MIL-STD 810F Metod 516.5**



[list of content...](#)

[go top...](#)

## Certificate

CE FCC Class B



### Dictionary:

**Nit** - 1Nit = 1Candela - The candela is the luminous intensity, in a given direction, of a source that emits monochromatic radiation of frequency  $540 \times 10^{12}$  hertz and that has a radiant intensity in that direction of  $1/683$  watt per steradian. The definition describes how to produce a light source that (by definition) emits one candela. Such a source could then be used to calibrate instruments designed to measure luminous intensity.

The candela is sometimes still called by the old name candle, such as in foot-candle and the modern definition of candlepower.