



Laptop - Clevo P157SM v.9

<b>Category:</b>	CLEVO Powerful Notebooks
<b>Manufacturer:</b>	Clevo
<b>WAN:</b>	No
<b>WLAN:</b>	Wireless LAN 802.11B/G/N + Bluetooth v4.0+LE Combo Half Mini Card module
<b>Bluetooth:</b>	Yes - 4.0
<b>Processor:</b>	Intel® Core™ i7-4800MQ Processor (2.7Ghz - 3.70 GHz / 6M Cache)
<b>Memory:</b>	32GB (4x8GB) KINGSTON HyperX 1600 MHz DDR3 CL9
<b>Chipset:</b>	Intel® 8 Series Chipset
<b>Display:</b>	15.6" FHD (1920 x 1080) LED Matte
<b>Graphics card:</b>	<b>NVIDIA GeForce GTX 780M 4GB</b>
<b>Touch screen:</b>	No
<b>Swivel Hinge:</b>	No
<b>Hard Drive:</b>	1TB Seagate Hybrid <b>SSHHD</b> ST1000LM014 (8GB Flash 64MB Cache) / Adata SSD XPG SX300 128GB mSATA3 (Read/Write: 550/505 MB/sec.)
<b>BIOS:</b>	-----
<b>VGA out:</b>	Yes - HDMI 1.4a , Display Port 1.1 , DVI-I
<b>LAN:</b>	10/100/1000MB Base - TX Ethernet LAN

<b>Camera:</b>	Yes - 2.0M FHD CCD
<b>Audio:</b>	Sound Blaster® X-Fi™ MB 3/ High Definition Audio/ 5 Speakers / Build-in sub-woofer/ External 7.1CH audio output supported by headphone, microphone, Line-in, and S/PDIF jack
<b>Security:</b>	Fingerprint
<b>TV Out:</b>	-----
<b>In/Out:</b>	1 x USB 2.0 port, 3 x USB 3.0 ports (1 x powered USB port, AC/DC) , 1 x eSATA port (USB 3.0 combo) , 1 x Mini IEEE 1394a port , 1 x Display port 1.2, Mini Display port 1.2, 1 x HDMI™ output port (with HDCP), 1 x Headphone jack, 1 x Microphone jack, 1 x
<b>In/Out:</b>	1 x USB 2.0 port, 3 x USB 3.0 ports (1 x powered USB port, AC/DC) , 1 x eSATA port (USB 3.0 combo) , 1 x Mini IEEE 1394a port , 1 x Display port 1.2, Mini Display port 1.2, 1 x HDMI™ output port (with HDCP), 1 x Headphone jack, 1 x Microphone jack, 1 x
<b>Keyboard:</b>	QWERTY - function keys, illuminated
<b>Additional Navigation Devices :</b>	<b>Illuminated</b> Touch pad with scrolling function
<b>Battery:</b>	Removable 8 cells Smart Lithium-Ion battery pack, 76.96WH
<b>Working time on battery:</b>	300 minutes
<b>Size:</b>	375 (W) x 268 (D) x 22~45 (H) mm (TBC), including ODD and 76.96WH Battery
<b>CD/DVD:</b>	BlueRay Writer SuperMultiDVD
<b>Operating System:</b>	-----
<b>Flash Card Reader:</b>	Yes - 9-in-1 (MMC / RSMHC - SD / mini SD / SDHC / SDXC - MS / MS Pro / MS Duo) - Push Push
<b>GPS:</b>	No
<b>TV Tuner:</b>	No
<b>Color:</b>	Black
<b>Other:</b>	-----

**Product from the Archive - production finished**

15.6"  
CLEVO®



UP TO  
32GB OF  
DDR3 MEMORY  
DUAL CHANNEL



CREATIVE®



mobikator.pl

Founded in 1983, the company has achieved an excellent reputation Clevo as a manufacturer of notebook computers. Due to the high position of the products in the high-tech has won many awards in tests conducted around the world.

CLEVO®

## Dedicated to the most demanding users

P157SM a laptop dedicated to solutions that require the greatest amount of power combined with great comfort of use. Rubberized elements and modern design ensures backlight keyboard and touchpad finalized with incredible performance and optimized power consumption Clevo P157SM puts in first place in the ranking of laptops in the world.



### Clevo P157SM v.9

Processor	Intel® Core™ i7-4800MQ Processor (2.7Ghz - 3.7Ghz / 6M Cache)
RAM	32GB (4x8GB) KINGSTON HyperX 1600 MHz DDR3 CL9
HDD	1TB Seagate Hybrid <b>SSHD</b> ST1000LM014 (8GB Flash 64MB Cache) Adata SSD XPG SX300 128GB <b>mSATA3</b> (Read/Write: 550/505 MB/sec.)
Graphics	nVidia Geforce GTX-780M (N14E-GTX) 4GB
Display	15.6" FHD (1920 x 1080) LED Matte
Network	Wireless LAN 802.11B/G/N + Bluetooth v4.0+LE Combo Half Mini Card
Optical Drive	BlueRay Writer SuperMultiDVD
Other	Camera CCD FHD 2.0Mpx

The detailed specification of the configuration available in the "**Technical data**"

If none of the available configuration does not interest you, you can always suggest your **option components**. Submit your suggestion using the contact form - up to 2 working days you will receive a valuation of the desired configuration. Remember to carefully specify each parameter and accessories.



Each purchaser of a Clevo barebone has the opportunity to buy their **own** components (CPU, RAM, disk). In this case, keep in mind that parts must be in full working order. Purchased parts to be sent to the headquarters of the NPD in order to verify the correct installation and operation.



[go top...](#)



## Fourth generation Intel® Core™ i7

Intel Core 4th generation, the engineers placed emphasis on optimal power management. Less energy means good things - longer battery life and thinner casing.

Model	C/T	Frequency	Max. Frequency	L3 cache	Max. GPU	TDP
i7-4700MQ	4 / 8	2.4 GHz	3.4 GHz	6 MB	1.15 GHz	47 Watt
i7-4800MQ	4 / 8	2.7 GHz	3.7 GHz	6 MB	1.3 GHz	47 Watt
i7-4900MQ	4 / 8	2.8 GHz	3.8 GHz	8 MB	1.3 GHz	47 Watt
i7-4930MX	4 / 8	3 GHz	3.9 GHz	8 MB	1.35 GHz	57 Watt



[go top . . .](#)



## New series nVidia® Geforce GTX®

NVIDIA GeForce® GTX 780M is currently the fastest graphics chip designed for laptops based on the award-winning architecture of NVIDIA® Kepler™. The increase in productivity compared to the GTX 680M is 30%. The system has more clocks and cores than ever before, thanks to crush the competition in every respect. The system is equipped with a core frequency of 823 MHz containing Boost technology 2.0 and GDDR5 memory with a capacity of 4GB.

	<b>NVIDIA GeForce GTX 780M</b>	<b>NVIDIA GeForce GTX 770M</b>
GPU	GK104 (N14E-GTX)	GK106 (N14E-GS)
Cores	1536	960
Clock	823 MHz	811 MHz
Memory	4096 MB GDDR5	3072 GB GDDR5
Memory Clock	2500 MHz	1002 MHz

[go top . . .](#)

## Flexible storage

From moving parts and only the same electronics. SSD two times faster reads and writes data over standard drives 2.5". Additionally, consumes little energy, and in general does not heat up and reduces the CPU load up to 10%.

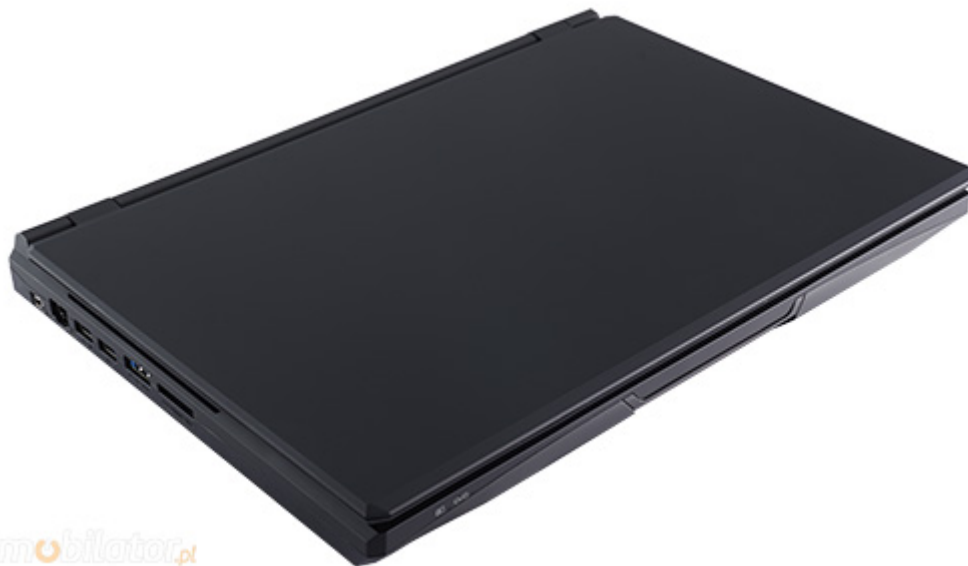


P157SM can support a total of four hard drives (2x - HDD, 2x - mSATA SSD) at the same time. This makes it possible to easily expand without having to move data from the old disk to the new one. If you start running out of space on your hard drive is enough that you will use just another. Clevo Laptop P157SM to mount two mSATA drive on which you can install the system and frequently used applications. This approach leads to a super-fast operation of your computer.

The speed of operations carried out applications installed on the mSATA drives can increase up to 30%.

## Increased security and faster work in RAID

**RAID 0** allows you to hook up physical drives into a single logical which allows for better use of space. With RAID 1, your data will be safer because a disk is an exact copy of the other. If one drive fails all data is still available on the other. RAID 1 is almost twice as fast as reading data from the disk.



[mobilator.pl](http://mobilator.pl)

[go top . . .](#)

## Advanced Illumination

The backlight keyboard and touchpad LED is a feature that not only beautifies Clevo P157SM, but also makes it easier to write when the light in the environment is weak. Illuminate the color and intensity can be adjusted to your needs. Highlighting three-zone which allows for the keyboard backlight in areas that are in use, and put it out there where it is unnecessary for example, the numeric keypad.



[go top...](#)

## Powerful storage capacity

UP TO  
**32GB** OF  
DDR3 MEMORY  
DUAL CHANNEL



Capacity 32gb ram Clevo p157sm your computer anymore let you down through technology-channel RAM. Sharing channels reduces data latency and increase memory bandwidth to satisfy most storage-hungry applications.

With up to 32GB system memory always cope with the number of assigned tasks in parallel. Producer allows you to mount four SODIMM memory chips DDR3/DDR3L.



**CLEVO** leaving the needs of laptop users comply P157SM easy access to system components. In this way without any problems **replacing** the drive with a larger one, increase the efficiency of bone RAM or simply clear the laptop with residual dust.

## Sound Blaster X-Fi MB3



Sound Blaster X-Fi MB3 has the best qualities of sound cards Sound Blaster® and sets new standards in technology for games and entertainment via the PC. Sound Blaster and built-in speakers with sub-woofer deliver superior sound quality while listening to and making music in CLEVO P157SM, as well as the best option for gaming.

[go top...](#)



In addition to DVI and HDMI sockets Laptop supports DisplayPort, which offers better color depth, speed of data transfer and support for high-resolution audio formats. All with a single cable.



- |   |  |
|---|--|
| <ol style="list-style-type: none"> <li>1. <u>Illuminated Power Button</u></li> <li>2. <u>Speakers</u></li> <li>3. <u>2.0M FHD Video Camera</u></li> <li>4. <u>Integrated Microphone</u></li> <li>5. <u>LED Status Indicators</u></li> </ol> | <ol style="list-style-type: none"> <li>6. <u>Illuminated Keyboard</u></li> <li>7. <u>Illuminated Touchpad with Multi-gesture and Scrolling function</u></li> <li>8. <u>Fingerprint Reader</u></li> </ol> |
|---|--|



