



## Laptop - Clevo P570WM v.2

<b>Category:</b>	CLEVO Powerful Notebooks
<b>Manufacturer:</b>	Clevo
<b>WAN:</b>	No
<b>WLAN:</b>	Yes - Combo Card (BT+WLAN802.11bgn)
<b>Bluetooth:</b>	Yes
<b>Processor:</b>	Intel® Core™ i7-3820 Processor (32nm, 3.60GHz, DDR3-1600MHz, 10MB L3 cache, LGA 2011, TDP: 130W)
<b>Memory:</b>	16GB (8GBx2) KINGSTON HyperX 1600 MHz DDR3 CL9
<b>Chipset:</b>	Desktop Intel® X79 Express Chipset
<b>Display:</b>	17.3" FHD Glare (1920*1080) 16:9 Widescreen
<b>Graphics card:</b>	2 x (SLI) - Nvidia GTX-680M (N13E-GTX) 4GB / Power Converter Box & 2nd Adapter (300W)
<b>Touch screen:</b>	No
<b>Swivel Hinge:</b>	No
<b>Hard Drive:</b>	1 x - 750GB SEAGATE MOMENTUS 2,5" 7200/16MB Cache , 1 x - Adata SSD XPG SX300 128GB mSATA3 (Read/Write: 550/505MB/sec.)
<b>BIOS:</b>	-----
<b>VGA out:</b>	Yes - HDMI 1.4a , Display Port 1.1 , DVI-I
<b>LAN:</b>	10/100/1000MB Base - TX Ethernet LAN

<b>Camera:</b>	Yes - 2.0M FHD CCD
<b>Audio:</b>	Sound Blaster® X-Fi™ MB 2/ High Definition Audio/ 5 Speakers / Build-in sub-woofer/ External 7.1CH audio output supported by headphone, microphone, Line-in, and S/PDIF jack
<b>Security:</b>	Kensington® Lock, Fingerprint , TPM 1.2
<b>TV Out:</b>	-----
<b>In/Out:</b>	3x USB 3.0 ports (1 x powered USB port), 2x USB 2.0 ports, 1x eSATA port (powered USB3.0 AC/DC combo), 1x Mini IEEE 1394b port , 1x Display port (Reversion depends on Video Controller), 1x DVI-I output port (Single link), 1x HDMI™ outp
<b>In/Out:</b>	3x USB 3.0 ports (1 x powered USB port), 2x USB 2.0 ports, 1x eSATA port (powered USB3.0 AC/DC combo), 1x Mini IEEE 1394b port , 1x Display port (Reversion depends on Video Controller), 1x DVI-I output port (Single link), 1x HDMI™ outp
<b>Keyboard:</b>	QWERTY - function keys, illuminated
<b>Additional Navigation Devices :</b>	Touch pad with scrolling function
<b>Battery:</b>	Removable Polymer Smart Li-Ion battery pack, 78.44WH
<b>Working time on battery:</b>	110 minutes (with NVIDIA® GTX 680M single, 78.44WH battery)
<b>Size:</b>	419(W) x 286(D) x 57.9~62.1(H) mm / ( Including single VGA card, ODD and 78.44WH battery)
<b>CD/DVD:</b>	<b>Blu-Ray Reader/Super Multi DVD DUAL</b>
<b>Operating System:</b>	-----
<b>Flash Card Reader:</b>	Yes - 9-in-1 (MMC / RSMC - SD / mini SD / SDHC / SDXC - MS / MS Pro / MS Duo)
<b>GPS:</b>	No
<b>TV Tuner:</b>	No
<b>Color:</b>	Black
<b>Other:</b>	-----

**Product from the Archive - production finished**



# CLEVO 570 WM



**mobilator.pl**



Founded in 1983, **CLEVO** has achieved a fine reputation as a developer and manufacturer of notebook computers. Due to our product positioning in the high-tech market, Clevo has won many awards in computer product evaluation conducted throughout the world.

**CLEVO®**

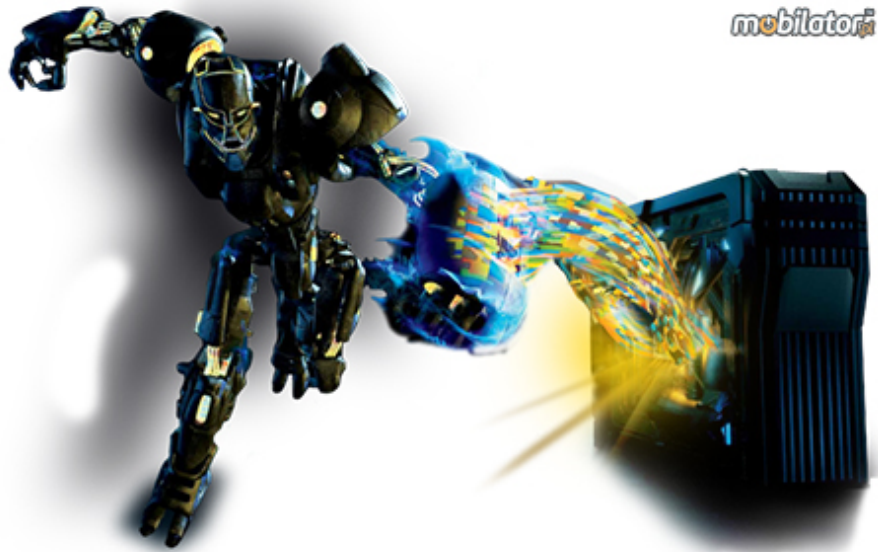
## Amazing FULL HD 1080p - LED

Breath-taking **graphics** generated by a state-of-the-art engine come alive only when displayed in stunning full 1080P. The p570wm 17.3" full 1080P HD widescreen with LED-backlit display technology delivers the most **brilliant** color and contrasts that will dazzle your eye whether you're watching a Blu-ray movie or playing a game.



# INTEL® CORE™ i7 EXTREME

mobikator.pl



## Intel® Core™ i7 Extreme Edition

3rd generation Intel® Core™ i7 processors deliver top-of-the-line performance for your All-in-One or Standard PC. Intel® Core™ i7 processors keep up with your most demanding tasks for a difference you can see and feel in HD or 3D, multitasking or multimedia. The Intel Core i7 processors include advanced technologies that deliver faster, smoother, and richer PC and visual experiences for all of your favorite, demanding activities—from editing film to mind-blowing gaming.



More doing, less waiting. Intel® **Hyper-Threading** Technology allows each core of your processor to work on two tasks at the same time.

Get an automatic burst of speed when your PC needs extra performance thanks to Intel® **Turbo Boost** Technology 2.0

Intel® **HD Graphics** enables superior mainstream gaming and 3D experiences – without the need for a discrete graphics card.



[go top...](#)



The NVIDIA GeForce GTX 680M leverages NVIDIA's revolutionary new architecture to deliver up to 60% more performance than the previous generation\*. Built for speed and efficiency, the GeForce® GTX 680M GPU outpaces the competition by up to 30%\*. Plus, NVIDIA GeForce™ drivers ensure that you're always getting the most out of your GPU for the ultimate gaming experience.



## Two graphics cards in S

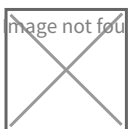
NVIDIA® SLI™ technology is a revolutionary platform innovation that allows you to intelligently scale graphics performance by combining multiple NVIDIA graphics solutions in an SLI-Certified motherboard. Using proprietary software algorithms and dedicated scalability logic in each NVIDIA graphics processing unit (GPU), NVIDIA SLI technology delivers up to twice the performance (with 2 cards) and 2.8X the performance (with 3 cards) compared to a single graphics solution.

### Why is an SLI-Ready PC an Intelligent Investment?

No other PC component upgrade can offer even close to the gaming performance boost gained from adding a second graphics card.

WYKRES WYDAJNOŚCI

Image not found or type unknown





NVIDIA® **CUDA™** technology unlocks the power of the GPU's processor cores to accelerate the performance for even the most demanding system tasks such as video transcoding. The HM lets you play **games** the way they're meant to be played without having to upgrade your video card is up to the task.

NVIDIA® **Optimus™** technology intelligently optimizes your notebook PC, providing the outstanding graphics performance you need, when you need it, all the while extending **battery life** for longer enjoyment.



NVIDIA **PhysX** technology helps games play better and feel better by making interaction with environments and characters far more **realistic** than ever before. By making behavior more realistic, the graphics look and “feel” better. PhysX is designed specifically for hardware acceleration by **powerful** processors with hundreds of processing cores.

Microsoft **DirectX** is the graphics technology powering all of today's hottest games. The latest version— **DirectX 11**—features tessellation for film-like geometric detail, compute shaders for custom graphics effects, and improved **multithreading** for better hardware utilization. With DirectX 11, tessellation and displacement mapping finally come together in a happy union, and already, developers are jumping on board. Popular games like **Alien vs. Predator** and **Metro 2033** use tessellation to produce smooth-looking models, and developers at Valve and id Software have done promising work on applying these techniques to their existing game characters.

Get ready to immerse yourself with an unrivaled auditory experience courtesy of the **P370EM3** powerful Sound Blaster X-Fi MB2 audio platform featuring the THX TruStudio Pro and Creative **EAX ADVANCED HD 5.0**. The THX TruStudio Pro audio technology creates unprecedented levels of audio realism and adds dynamics and punch to every gaming sound and surround effect. The Creative EAX ADVANCED HD 5.0 features state-of-the-art multi-environment rendering and reverb **modeling** and delivers an amazingly realistic and immersive 3D gaming experience through the NP9370 built-in speakers and subwoofer made by Onkyo.



**THX<sup>®</sup> TruStudio Pro<sup>™</sup>** is specially designed to bring the same great audio experience found in live performances, films, and recording studios - to the PC. THX TruStudio Pro provides the latest groundbreaking technologies that are products of years of collective experience and research by **Creative** and THX. Together, these technologies deliver the fullest audio experience for music, movies and games, while remaining true to the source and intention of the artists who created it.

[go top...](#)

## Fingerprint

Fingerprint security feature that makes your system has become even more personal, allows you to secure your fingerprint. This is possible through the use of a small fingerprint scanner. Solutions of this kind are very effective at securing devices containing important and confidential data and also allow for easy and quick log-in to the system. It is an ideal solution for business use, when we need to effectively protect your data.

## TPM (Trusted Platform Module)

A TPM is a microchip designed to provide basic security-related functions, primarily involving encryption keys. The TPM is usually installed on the motherboard of a computer or laptop, and communicates with the rest of the system using a hardware bus. Computers that incorporate a TPM can also create a key that has not only been wrapped, but also tied to certain platform measurements. This type of key can only be unwrapped when those platform measurements have the same values that they had when the key was created. This process is called "sealing" the key to the TPM. Decrypting it is called "unsealing."

With a TPM, private portions of key pairs are kept separated from the memory controlled by the operating system. Keys can be sealed to the TPM, and certain assurances about the state of a system—that define its "trustworthiness"—can be made before the keys are unsealed and released for use. Because the TPM uses its own internal firmware and logic circuits for processing instructions, it does not rely upon the operating system and is not exposed to external software vulnerabilities.



NVIDIA® company **CLEVO** leaving the needs of laptop users comply P170 easy access to system components. In this way without any problems **replacing** the drive with a larger one, increase the efficiency of bone RAM or simply clear the laptop with residual dust.

[go top...](#) [menu](#)

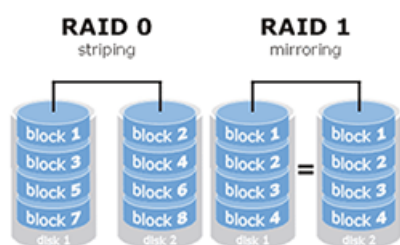
**Flash SSD** (Solid State Disc) technology - this means that they has no moving parts inside. Disk reads and writes data 2 times faster than standard 2,5" disks. In addition, it does not heat up at all, consuming little energy and discharge CPU up to 10%. Computer witch **SSD** drives runs much faster.

**The possibility of adding more drives**  
**DRIVES**



P570WM supports three hard drives and optical drive at the same time. This enables easy expansion without having to move data from the old disk to the new one. If you start running out of space on your hard drive is enough that simply you will use again.

## Greater security and faster work in RAID



Get more with your HDDs thanks to **RAID** technology. RAID 0 joins physical drives into a single logical drive which allows you to better use of space. With RAID 1 your data will be **safer** because one disk is an exact copy of the other. Even if one disk fail all data will still be available on the second disk. With **RAID 1** data reading accelerates almost twice. Even if one disk fail all data will still be available on the second disk. With RAID 1 data reading accelerates almost **twice**.

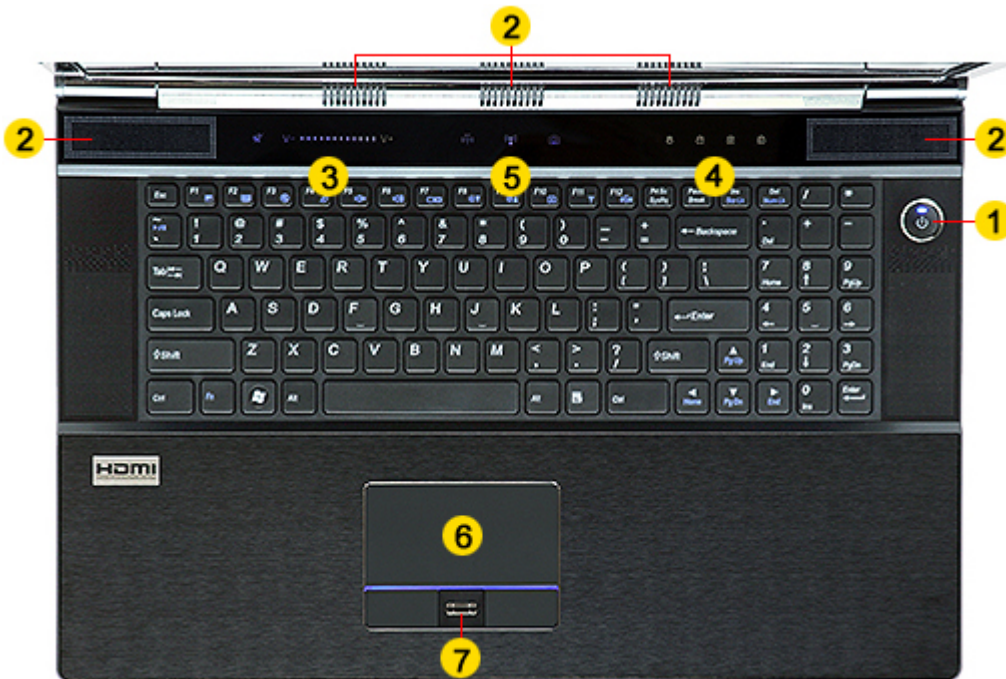


[go top...](#)

Make your **570WM** a stylish focal point with the full color programmable backlight keyboard. Choose from 7 instant effects or **customize** your own color combinations in 3 different keyboard sections with the Keyboard Backlight Application.



[go top...](#)



1. Power Button

2. Speakers

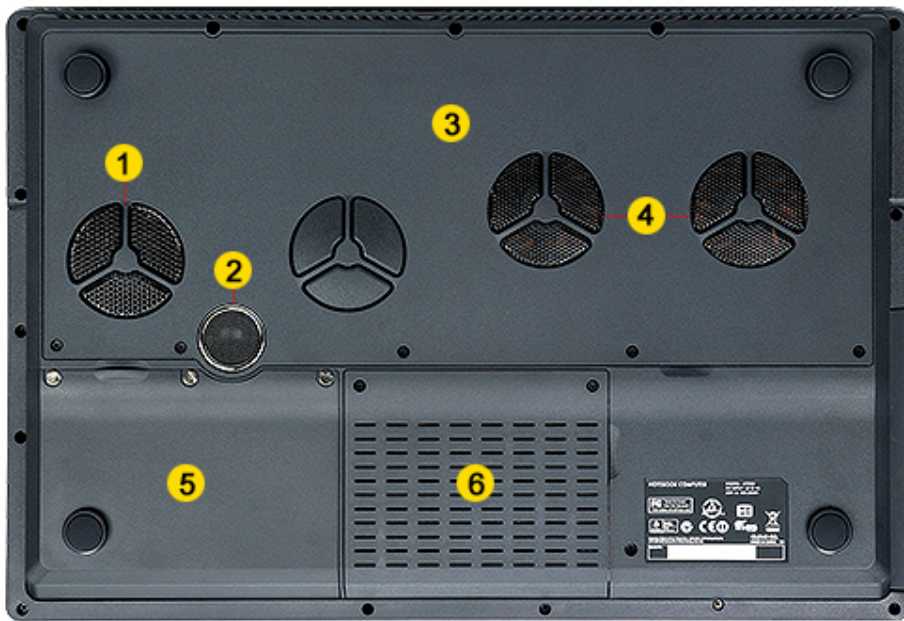
3. Touch Sensor Volume Control and Mute Button

4. Led Status Indicators

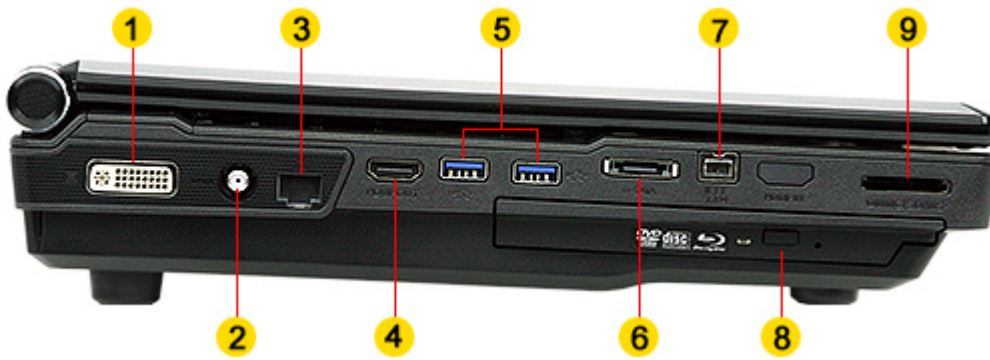
5. Touch Sensor Buttons (Cam&Bluetooth&Wlan)

6. Touch Pad with Scroll Slider

7. Fingerprint Reader



- |                            |  |
|----------------------------|--|
| 1. CPU Cooling Fan         | 4. GPU Cooling Fans                          |
| 2. Sub-woofer              | 5. Battery Pack & 3rd Hard Drive Compartment |
| 3. CPU and GPU Compartment | 6. Primary & 2nd Hard Drive Compartment      |



- |  |  |
|--|--|
| 1. DVI-I Output Jack                     | 5. 2x - USB 3.0 Ports  |
| 2. CATV Jack (Enable with TV Tuner only) | 6. eSATA Port  |
| 3. RJ-45 LAN Port (Gigabit)              | 7. IEEE 1394b Port   |
| 4. HDMI Output Jack                      | 8. Optical Device Bay  |
|  | 9. 9in1 Card Reader (SD/Mini-SD/SDHC/SDXC/SDXC/MS/MS Pro/MS Duo/MMC/RSMCC) |

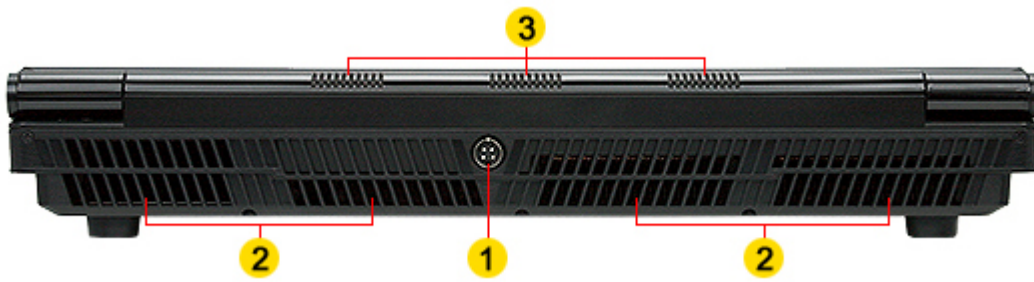


- |  |                            |
|--|----------------------------|
| 1. Consumer Infrared Transceiver (Enabled with Optional TV - Tuner only) | 2. Power Status Indicators |
|--|----------------------------|



- 1. Line - In
- 2. S/PDIF - Out Jack
- 3. Microphone-In Jack

- 4. Headphone - Out Jack
- 5. USB 2.0 Ports
- 6. Kensington Lock



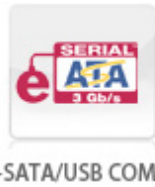
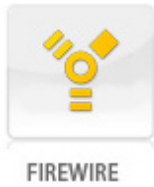
- 1. DC - In Jack
- 2. Vents

- 3. Speakers

[go top...](#)



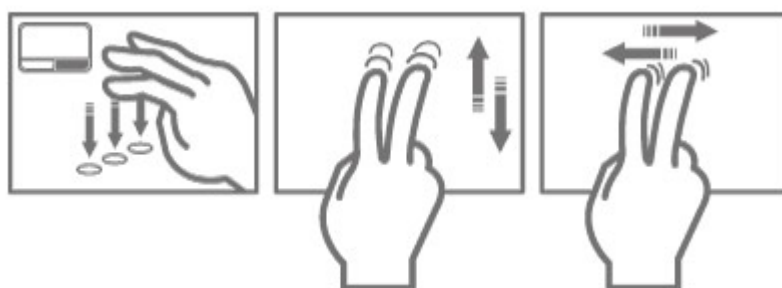
Enjoy a dramatic boost in multitasking performance with more system memory thanks to the quad SODIMM memory slots. With up to 32GB of Dual-Channel DDR3 memory, your system will never lag while multimedia editing, graphics design/3D modeling, and graphic-intensive gaming at once.



While most gaming notebooks supply four USB ports at most, the P570WM barebone sports **five USB ports** (3x 3.0 & 2x 2.0). Four audio jacks (microphone, headphone, line-in, S/PDIF) and three digital video outputs (DVI, DisplayPort, HDMI) must also be praised. eSATA and FireWire are also installed. In addition to that, there is a Kensington lock, RJ45 Gigabit LAN port, a 9in1 card reader and an ExpressCard slot. The antenna input of the old model has fallen victim to cutbacks.



The integrated **multi-gesture** touchpad on the notebook allows user to perform various operations by tapping multiple fingers and making gestures. When using a computer touchpad can accurately detect multi-finger movements. Using touchpad is not only **effective** but also enjoyable



Clevo

P570WM is sold complete with 8-cell battery with a capacity of 78 Wh, which is sufficient for almost 2 hours (not too hard) work. The computer weighs about 6 pounds and has dimensions of 419 x 286 x 73 mm, so it's definitely not ultra-mobile design.



mobikator.pl

Speaking about justice, **two gigantic 300 watt PSUs** are included for the P570WM in order to provide the desktop CPU and both GeForce graphics cards with power. Both weigh 1.6 kilograms and have a size of roughly 21 x 11 x 5 centimeters.



[more photos in "Gallery"...](#)

**specification of this version is available in the** ["Technical Data"...](#)