

mBOX Q1012GE



mBOX-Q1012GE v. 4 – Industrial MiniPC with Intel Celeron 4305U processor and SSD 256GB, Wifi



Category:	MiniPC Industry
Manufacturer:	Mobikator
Supported OS:	Windows 10 Linux
Installed OS:	-----
Chipset:	Intel Chipset
CPU Support:	Intel Celeron
Installed CPU:	Intel Celeron 4305U (2x2.2GHz)
Graphic Card:	Intel® HD Graphics
Memory Support:	DDR4 (max 32GB)
Installed Memory:	8GB
Storage (HDD) Support:	SSD (mSATA), HDD
Installed Storage (HDD):	256GB
IP Norm:	Yes
Temp:	Yes
Storage temperature:	-20°C do 80°C
Humidity:	10% do 90%
Others:	color black

LAN:	Intel i225V 2.5G
Wireless LAN card:	Yes
3G:	-----
4G LTE:	-----
Bluetooth:	-----
Rear Panel (ports):	8xLAN
Front Panel (ports):	4xUSB 3.0 1xDC Jack 1xHDMI 1xDP 1xRS-232
Expansion:	-----
Power:	12V
Watch Dog Timer:	2.5 kg
CD/DVD Drive:	-----
TV Tuner:	-----
Dimensions:	220 x 128 x 62mm
Fanless:	-----
Weight:	0°C do 50°C

520,05 €

net price: 422,80 €

mBOX Q1012GE



SPECIFICATION

RESISTANCE AND DURABILITY

CONNECTIVITY AND COMMUNICATION

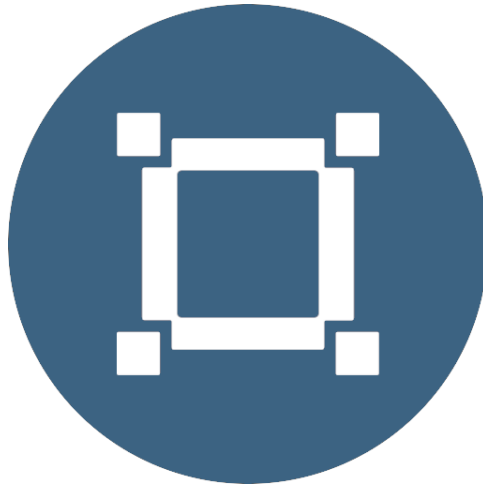
DEVICE APPLICATION

AVAILABLE VERSIONS

Small dimensions industrial computers excel in environments where dust, dirt and moisture predominate. They are ideal for applications requiring quiet operation. Small and reliable MiniPC use heat-pipe technology and aluminum fins for passive cooling. The robust mini Industrial Computer mBOX

Q1012GE is a device designed for all industrial and non-continuous applications requiring continuous operation - 24 hours, 7 days a week.

Small dimensions industrial computers excel in environments where dust, dirt and moisture predominate. They are ideal for applications requiring quiet operation. Small and reliable MiniPC use heat-pipe technology and aluminum fins for passive cooling. The robust mini Industrial Computer mBOX Q1012GE is a device designed for all industrial and non-continuous applications requiring continuous operation - 24 hours, 7 days a week.



Small dimensions

The compact casing makes the Mini PC fit wherever you need it and is easy to carry.



Construction

The weight of the computer does not exceed 3.0 kg, so it can be

mounted on various machines.



Efficient components

The dual-core Intel Celeron 4305U CPU provides improved device performance.



Wireless network

The mini PC can be connected to nearby wireless networks thanks to equipping it with an optional Wi-Fi module.



Quick start

A modern SSD drive will increase the speed of application programs and ensure quiet operation of the computer.



Passive cooling

The use of passive cooling in the Mini PC ensures silent operation and slows down dust deposition.

SPECIFICATION

Mini-PC mBOX
Q1012GE

Processor	Intel Celeron 4305U (2x2.2GHz)
Operation system	Support: Windows 10 Linux
RAM	8GB DDR4
Drive	SSD 256GB mSATA
Graphic card	Intel® UHD Graphics
Connectivity	Intel i225V 2.5G LAN
Front panel	4xUSB 3.0 1xDC Jack 1xHDMI 1xDP 1xRJ-45
Rear panel	8xLAN
Available colors	Black
Dimensions	220 x 128 x 62mm
Weight	2.5 kg

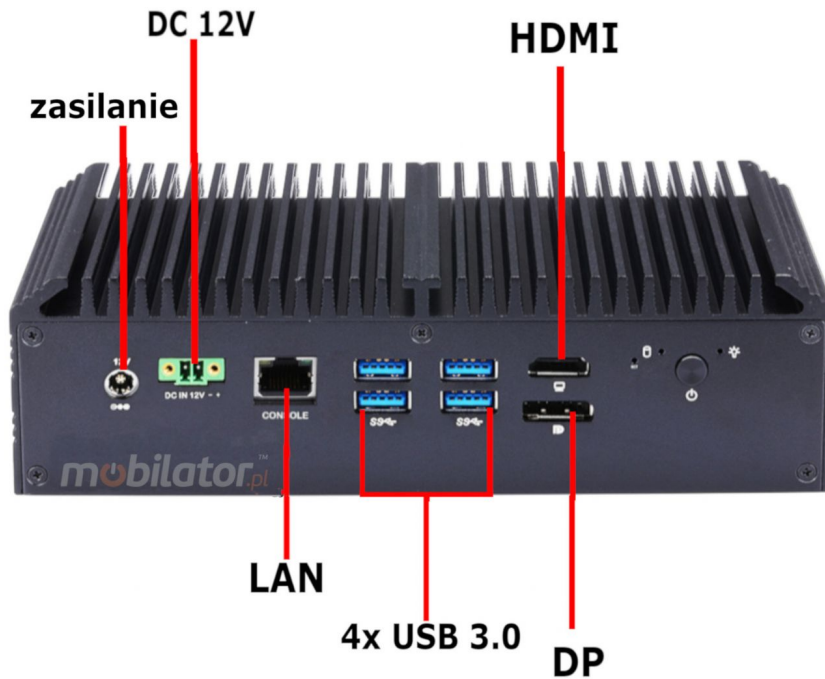


Detailed device specification is available in the "Technical data".

Efficient processor

The industrial mini-computer mBOX Q1012GE uses an efficient and energy-saving Intel Celeron 4305U processor. Inside it there are four cooperating cores enabling more efficient processing of many tasks at the same time. The shared cache memory in which the multilevel hierarchy is used is dynamically allocated to each processor core depending on the load. This reduces the average access time to the main memory. It offers improved manageability by limiting downtime and maintaining productivity by isolating computing activities into separate partitions.

Interfaces



Dimensions

Thanks to the small dimensions of the MiniPC, the mBOX Q1012GE is versatile for use at home, in the office and in the industry, for example in the production hall. It's literally everywhere, and thanks to the

VESA mount it can be mounted on the back of the monitor to optimize the job.



Dimensions	220 x 128 x 62mm
Weight	2.5 kg

Passive cooling

The industrial Mini PC uses a proven cooling system, based only on solid elements, mainly heat sinks. The system uses the phenomenon of metals passing thermal energy into the environment - there are no additional moving elements in the form of eg fans. This solution ensures noiseless operation, lower failure rate and greater protection against dust and other dirt while reducing the amount of energy consumed.

RESISTANCE AND DURABILITY

Temperatures

mBOX Q1012GE is designed for continuous operation in both very low and high temperatures ranging from 0 ° C to 80 ° C (SSD). If the device is switched off, it can already handle temperatures in the range of -10°C to 60°C (SSD).

Work temp.	0°C do 50°C (SSD)
Storage temp.	-20°C do 80°C (SSD)
Humidity	10% do 95%

Mechanical damage

The passive cooling system used in the MiniPC mBOX Q1012GE

combined with the SSD disk makes this computer very resistant to various types of mechanical injuries. An additional advantage of industrial computers is a solid construction made of high quality aluminum and specially designed in such a way that in addition to high efficiency in heat dissipation, it can also resist any external damage.

CONNECTIVITY AND COMMUNICATION

Wired LAN Network

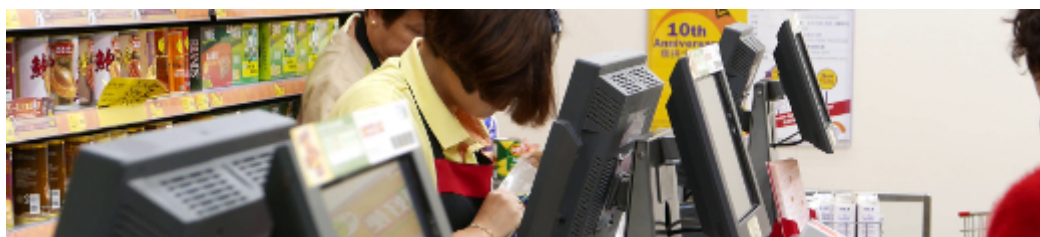
The MiniPC mBOX Q1012GE has built-in Realtek network adapter that can work in a fast Gigabit Ethernet network.



DEVICE APPLICATION

Trade and service

Mini PC is an ideal tool to support us in the implementation of many activities in the field of trade, small dimensions increase the possibility of its adaptation to activities such as issuing invoices or preparing documentation, which in turn allows us to convenient and optimal sales management. The VESA holder mounted to the housing provides many installation options, eg in stores (at the cash register, under the desktop, behind the LCD / LED monitor), in factory halls or in a delivery truck.



VESA



Warehouse and logistics

Thanks high performance an industrial computer can be used to connect multiple devices in a warehouse and make their management much easier. Its rugged casing and the fanless cooling system are ideal for harsh environments in such rooms. The solid construction guarantees long-lasting work, even in environments with high dustiness and dirt.



Transport and motorization

A small industrial computer can be used in transport thanks to the ability to work on 12V power supply. Then the mini computer can be used in passenger cars, buses, trams, taxis, trains and even in airplanes. It allows you to inform the driver about the current state of the vehicle, transfer its current location to the management center, display information for passengers, etc. It

performs well in vehicles where small dimensions are important.



More photos in full resolution available in the "Gallery".

AVAILABLE VERSIONS

The industrial mini-computer mBOX Q1012GE is offered in several versions to suit different needs. By clicking on the number of the hardware configuration you will be redirected to the product with the parameters given in the table below. In addition, it is possible to create a configuration that is currently unavailable on the customer's request.

	v.0	v.1	v.2	v.3	v.4	v.5
4GB RAM	—	+	+	+	—	—
8GB RAM	—	—	—	—	+	—
16GB RAM	—	—	—	—	—	+
32GB RAM	—	—	—	—	—	—
32GB mSATA SSD	—	+	—	—	—	—
64GB mSATA SSD	—	—	+	—	—	—
128GB mSATA SSD	—	—	—	+	—	—

256GB mSATA SSD	—	—	—	—	+	—
512GB mSATA SSD	—	—	—	—	—	+
WiFi	—	—	+	+	+	+