



mBOX Q878GE v.4 - MiniPC with 16 GB RAM, capacious 512GB SSD and USB 3.0, LAN ports as well as a WiFi module

Category:	MiniPC Industry
Manufacturer:	Mobilator
Supported OS:	Windows 10 Linux
Installed OS:	-----
Chipset:	Intel Chipset
CPU Support:	Intel Core i7
Installed CPU:	intel Core i7-8550U (4x 1.8 GHz)
Graphic Card:	Intel UHD Graphics 620
Memory Support:	DDR4 SO-DIMM (max. 16GB, 2133/2400MHz)
Installed Memory:	16GB DDR4
Storage (HDD) Support:	SSD 2.5-inch HDD
Installed Storage (HDD):	512GB SSD
IP Norm:	-----
Temp:	0°C ~ 50°C
Storage temperature:	-20°C ~ 80°C
Humidity:	10% ~ 90%

Others:	Color Black
LAN:	4 x Intel I211-AT Gigabit LAN,4 x Intel I350 Gigabit LAN
Wireless LAN card:	Yes
3G:	-----
4G LTE:	-----
Bluetooth:	-----
Rear Panel (ports):	8x LAN
Front Panel (ports):	4x USB 3.0, 2x USB 2.0, DC, HDMI, RS232(RJ45)
Expansion:	-----
Power:	12V
Watch Dog Timer:	Yes
CD/DVD Drive:	-----
TV Tuner:	-----
Dimensions:	217mm x 122mm x 62mm
Fanless:	Yes
Weight:	2500g

4 096,65 zł

net price: 3 330,61 zł

mBOX Q878GE



TECHNICAL SPECIFICATION

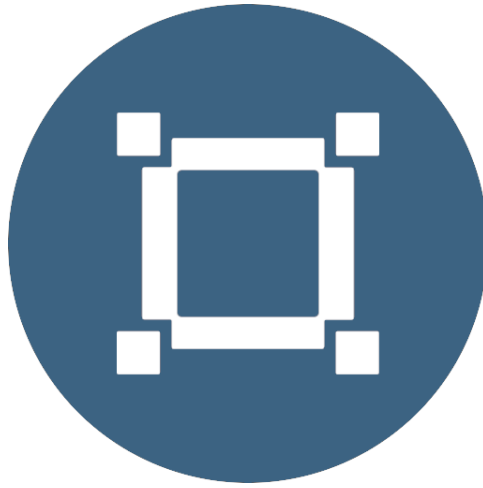
RESISTANCE AND DURABILITY

CONNECTIVITY AND COMMUNICATION

DEVICE APPLICATION

AVAILABLE VERSIONS

Small dimensions industrial computers excel in environments where dust, dirt and moisture predominate. They are ideal for applications requiring quiet operation. Small and reliable MiniPC use heat-pipe technology and aluminum fins for passive cooling. The robust mini Industrial Computer mBOX Q878GE is a device designed for all industrial and non-continuous applications requiring continuous operation - 24 hours, 7 days a week.



Small dimensions

The compact housing means that the Mini PC will fit wherever you need it and is easy to carry.



Lightweight design

The computer's weight does not exceed 3 kg, so it can be conveniently carried in a bag or backpack.



Efficient components

The Intel Core i7-8550U quad-core CPU provides improved device performance.



Wireless network

The mini PC can be connected to nearby wireless networks by equipping it with an optional Wi-Fi module.



Quick start

A modern SSD drive will increase the speed of application programs and ensure quiet computer operation.



Passive cooling

The use of passive cooling in the Mini PC ensures silent operation and slows dust deposition.

SPECIFICATION

Mini-PC mBOX Q878GE (intel i7-8550U)

Processor	intel i7-8550U (4x 1.8 GHz)
Operation system	Support: Windows 7/8/10 Linux
RAM	16 GB DDR4 SO-DIMM
Drive	512 GB SSD
Graphic card	Intel UHD Graphics 620
Connectivity	WiFi LAN: 4 x Intel I211-AT Gigabit LAN, 4 x Intel I350 Gigabit LAN
Front panel	4x USB 3.0 2x USB 2.0 DC HDMI RS232 (RJ45)
Rear panel	8x LAN
Available colors	Black
Dimensions	217 x 122 x 62mm
Weight	2.5kg



Detailed device specification is available in the "Technical data".

Efficient processor



The industrial mini-computer mBOX Q878GE uses an efficient and energy-saving Intel i7-8550U processor. Inside it there are two cooperating cores

enabling more efficient processing of many tasks at the same time. The shared cache memory in which the multilevel hierarchy is used is dynamically allocated to each processor core depending on the load. This reduces the average access time to the main memory. The implemented Virtualization Technology (VT-x) allows one hardware platform to function as multiple “virtual” platforms. It offers improved manageability by limiting downtime and maintaining productivity by isolating computing activities into separate partitions.

Interfaces



Dimensions



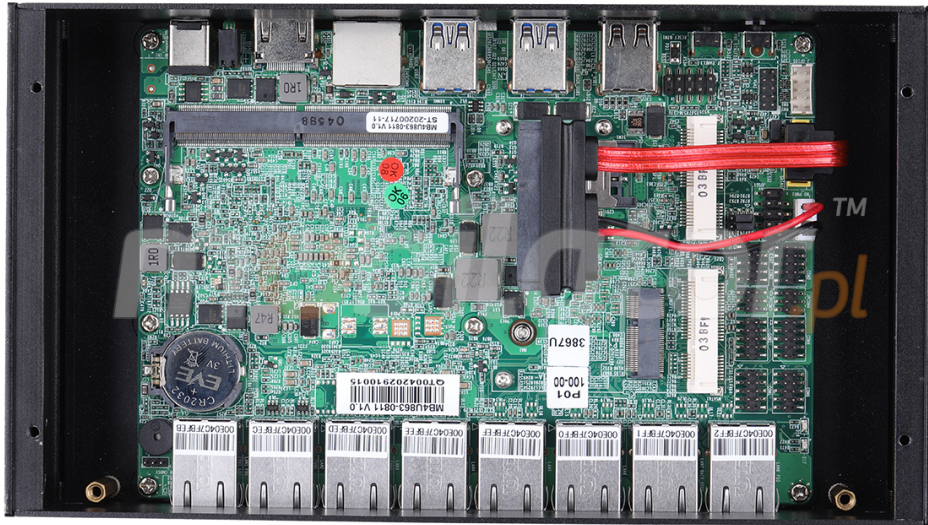
Thanks to the small dimensions of the MiniPC, the mBOX Q878GE is versatile for use at home, in the office and in the industry, for example in the production hall. It's literally everywhere, and thanks to the VESA mount it can be mounted on the back of the monitor to optimize the job.

Dimensions	217 x 122 x 62mm
Weight	2.5kg

Passive cooling

The industrial Mini PC uses a proven cooling system, based only on solid elements, mainly heat sinks. The system uses the phenomenon of metals passing thermal energy into the environment - there are no additional moving elements in the form of eg fans. This solution ensures noiseless operation, lower failure rate and greater protection against dust and other dirt while reducing the amount of energy consumed.

RESISTANCE AND DURABILITY



Temperatures

878GE

is designed for continuous operation in both very low and high temperatures ranging from -10 °C to 60°C. If the device is switched off, it can already handle temperatures in the range of -20 °C to 60 °C.

Work temp.	0°C to 50°C
Storage temp.	-20°C to 80°C
Humidity	10% to 90%

Mechanical damage

The passive cooling system used in the MiniPC mBOX Q878GE combined with the SSD disk makes this computer very resistant to various types of mechanical

injuries. An additional advantage of industrial computers is a solid construction made of high quality aluminum and specially designed in such a way that in addition to high efficiency in heat dissipation, it can also resist any external damage.

CONNECTIVITY AND COMMUNICATION

Wireless network

The dual-band Wi-Fi module provides quick access to the network wherever you can connect to secured or open Wi-Fi networks. This is a convenient solution for people who have a router at home or place of residence and a wireless network that can be used at no extra charge. Industrial mini-PC iBOX-N13AL6

has been equipped the standard of - 802.11n, which allows transfer of files at a dizzying speed of up to 300 Mb / s.

Wired LAN Network

The MiniPC mBOX Q878GE has a built-in Intel network adapter that can work in a fast Gigabit Ethernet network.

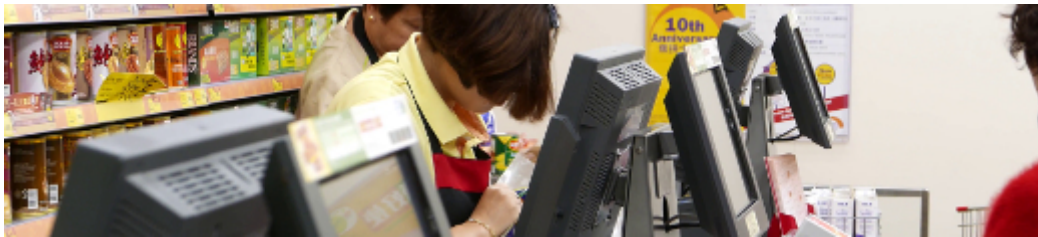
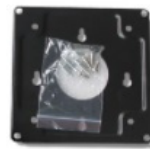


DEVICE APPLICATION

Trade and service

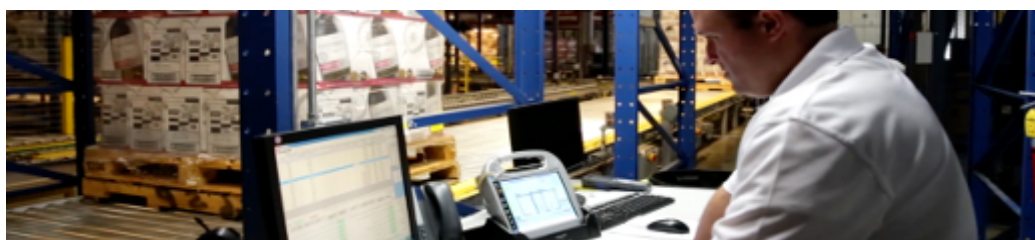
Mini PCs are an ideal tool to support us in the implementation of many activities in the field of trade, small dimensions increase the possibility of its adaptation to activities such as issuing invoices or preparing documentation, which in turn allows us to convenient and optimal sales management. The VESA holder mounted to the housing provides many installation options, eg in stores (at the cash register, under the desktop, behind the LCD / LED monitor), in factory halls or in a delivery truck.

VESA



Warehouse and logistics

Thanks to its high performance an industrial computer can be used to connect multiple devices in a warehouse and make their management much easier. Its rugged casing and the fanless cooling system are ideal for harsh environments in such rooms. The solid construction guarantees long-lasting work, even in environments with high dustiness and dirt.



Transport and motorization

A small industrial computer can be used in transport thanks to the ability to work on 12V power supply. Then the mini computer can be used in passenger cars, buses, trams, taxis, trains and even in airplanes. It allows you to inform the driver about the current state of the vehicle, transfer its current location to the management center, display information for passengers, etc. It performs well in vehicles where small dimensions are important.



More photos in full resolution available in the "Gallery".

AVAILABLE VERSIONS

The industrial mini-computer mBOX Q878GE is offered in several versions to suit different needs. By clicking on the number of the hardware configuration you will be redirected to the product with the parameters given in the table below. In addition, it is possible to create a configuration that is currently unavailable on the customer's request.

	v.1	v.2	v.3	v.4	v.5	Barebone
4GB RAM	+	-	-	-	-	-
8GB RAM	-	+	+	-	-	-
16GB RAM	-	-	-	+	+	-
32GB SSD	-	-	-	-	-	-
64GB SSD	+	-	-	-	-	-
128GB SSD	-	+	-	-	-	-
256GB SSD	-	-	+	+	-	-
512GB SSD	-	-	-	-	+	-

WiFi

+

+

+

+

+

—