



MiniPC - Industrial Fanless Computer mBOX Q190X - LPT v.4

Category:	MiniPC Industry
Manufacturer:	Mobikator
Supported OS:	Microsoft Windows: 7/8/8.1/10, Linux
Installed OS:	-----
Chipset:	Intel express chipset
CPU Support:	Intel Celeron
Installed CPU:	Intel Celeron J1900 (4x 2.00GHz) 2MB SmartCache
Graphic Card:	Intel HD Graphics
Memory Support:	DDR3L SO-DIMM (max. 8GB)
Installed Memory:	8GB
Storage (HDD) Support:	SSD / HDDmSATA / SATA
Installed Storage (HDD):	500GB HDD
IP Norm:	-----
Temp:	0°C — 50°C
Storage temperature:	-20°C — 80°C

Humidity:	10% ~ 90%
Others:	Color Black
LAN:	2x Intel I211-AT 10/100/1000M
Wireless LAN card:	Yes
3G:	-----
Bluetooth:	-----
Rear Panel (ports):	Power connector DC12V2x Intel i211 RJ45 Gigabit LAN1x HDMI1x VGA4x RS-2321x USB 3.01x USB 2.01x Mic1x Audio
Front Panel (ports):	6x USB 2.03x RS-2321x LPTPower button
Expansion:	-----
Power:	12V3A
Watch Dog Timer:	Yes
CD/DVD Drive:	-----
TV Tuner:	-----
Dimensions:	178mm x 111mm x 53mm
Fanless:	Yes
Weight:	870g

1 734,30 zł

net price: 1 410,00 zł



TECHNICAL SPECIFICATION

RESISTANCE AND DURABILITY

CONNECTIVITY AND COMMUNICATION

DEVICE APPLICATION

AVAILABLE VERSIONS

Small dimensions industrial computers excel in environments where dust, dirt and moisture predominate. They are ideal for applications requiring quiet operation. Small and reliable MiniPC use heat-pipe technology and aluminum fins for passive cooling. The robust mini Industrial Computer mBOX-Q190X is a device designed for all industrial and non-continuous applications requiring continuous operation - 24 hours, 7 days a week.



Small dimensions

The compact housing means that the Mini PC will fit wherever you need it and is easy to carry.



Lightweight design

The computer's weight does not exceed 1.0kg, so it can be conveniently carried in a bag or backpack.



Efficient components

The Intel Celeron J1900 quad-core CPU provides improved device performance.



Wireless network

The mini PC can be connected to nearby wireless networks by equipping it with a Wi-Fi module.



Data Storage

The large disk capacity allows to store and archiving important user data.



Passive cooling

The use of passive cooling in the Mini PC ensures silent operation and slows dust deposition.

go

SPECIFICATION

Performance	
Processor	Intel Celeron J1900 (4x 2.00 GHz)
Graphics card	Intel HD Graphics
Operating system	Windows 7/8/10 Linux
RAM	8GB DDR3L SO-DIMM
Drive	500GB HDD
Interfaces	
Connectivity	Wi-Fi LAN - 2x Intel i211AT 1Gb/s
Front panel	6x USB 2.0 / 3x RS-232 / 1x LPT /Power button
Rear panel	Power connector / 2x Gigabit LAN / 1x HDMI 1x VGA / 4x RS-232 / 1x USB 3.0 / 1x USB 2.0 1x Audio / 1x Mic
Other	
Available colors	Black
Dimensions	178mm x 111mm x 53mm
Weight	0.870kg

EFFICIENT PROCESSOR

The industrial mini-computer mBOX-Q190X uses an efficient and energy-saving Intel Celeron J1900 processor. Inside it there are four cooperating cores enabling more efficient processing of many tasks at the same time. The shared cache memory in which the multilevel hierarchy is used is dynamically allocated to each processor core depending on the load. This reduces the average access time to the main memory.

INTERFACES



DIMENSIONS



Detailed device specification is available in the "[Technical data](#)" tab.

PASSIVE COOLING

The industrial Mini PC uses a proven cooling system, based only on solid elements, mainly heat sinks. The system uses the phenomenon of metals passing thermal energy into the environment - there are no additional moving elements in the form of eg fans. This solution ensures noiseless operation, lower failure rate and greater protection against dust and other dirt while reducing the amount of energy consumed.

[go up...](#)

RESISTANCE

TEMPERATURES

mBOX-Q190X is designed for continuous operation in both very low and high temperatures ranging from -20 ° C to 60 ° C. If the device is switched off, it can already handle temperatures in the range of -20 ° C to 60 ° C.



Work temp.	-10°C – 60°C
Storage temp.	-10°C – 60°C
Humidity	0% – 95%

[go up...](#)

CONNECTION

WIRELESS NETWORK

The dual-band Wi-Fi module provides quick access to the network wherever you can connect to secured or open Wi-Fi networks. This is a convenient solution for people who have a router at home or place of residence and a wireless network that can be used at no extra charge. Industrial mini-PC mBOX-Q190X has been equipped the standard of - 802.11n, which allows transfer of files at a dizzying speed of up to 300 Mb / s.

WIRED LAN NETWORK

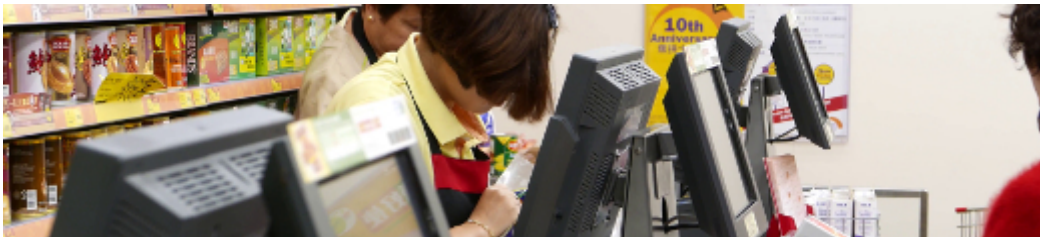
The MiniPC mBOX Q190X has been in two Intel i211AT network adapters that can work in a fast Gigabit Ethernet network.



[go up...](#)

TRADE AND SERVICES

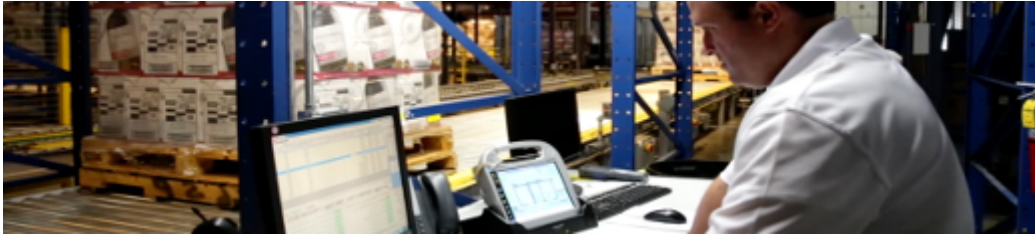
Mini PC is an ideal tool to support us in the implementation of many activities in the field of trade, small dimensions increase the possibility of its adaptation to activities such as issuing invoices or preparing documentation, which in turn allows us to convenient and optimal sales management. The VESA holder mounted to the housing provides many installation options, eg in stores (at the cash register, under the desktop, behind the LCD / LED monitor), in factory halls or in a delivery truck.



WAREHOUSE AND LOGISTICS

Thanks high performance an industrial computer can be used to connect multiple devices in a warehouse and make their management much easier. Its rugged casing and the fanless cooling system are ideal for harsh environments in such rooms. The solid construction guarantees long-lasting work, even in environments

with high dustiness and dirt.



TRANSPORT AND MOTORIZATION

A small industrial computer can be used in transport thanks to the ability to work on 12V power supply. Then the mini computer can be used in passenger cars, buses, trams, taxis, trains and even in airplanes. It allows you to inform the driver about the current state of the vehicle, transfer its current location to the management center, display information for passengers, etc. It performs well in vehicles where small dimensions are important.



More pictures of the device available in the ["Gallery"](#) tab.

[go up...](#)

VERSIONS

The industrial mini-computer mBOX-Q190X is offered in several versions to suit different needs. By clicking on the number of the hardware configuration you will be redirected to the product with the parameters given in the table below. In addition, it is possible to create a configuration that is currently unavailable on the customer's request.

	v.0	v.1	v.2	v.3	v.4	v.5	v.6
WiFi	—	—	—	+	+	+	—
2GB RAM	—	+	—	—	—	—	—
4GB RAM	—	—	+	+	—	—	—
8GB RAM	—	—	—	—	+	+	+
32GB SSD	—	+	—	—	—	—	—
64GB SSD	—	—	+	—	—	—	—
128GB SSD	—	—	—	+	—	—	—
500GB HDD	—	—	—	—	+	—	—
256GB SSD	—	—	—	—	—	+	—
2TB HDD	—	—	—	—	—	—	+
WiFi + BT	—	—	—	—	—	—	+