



MiniPC yBOX-X56-(6LAN)-I7 1165G7  
Barebone - Compact budget fanless  
industrial computer



**BAREBONE**



<b>Category:</b>	MiniPC Industry
<b>Manufacturer:</b>	Mobikator
<b>Supported OS:</b>	Windows, Linux, CentOS, Pfsense, MikroTIK, VMWare
<b>Installed OS:</b>	-----
<b>Chipset:</b>	Intel Chipset
<b>CPU Support:</b>	Intel Core i7 1165G7
<b>Installed CPU:</b>	Intel Core i7 1165G7 (4x 4.70 GHz)
<b>Graphic Card:</b>	i7 1165G7: Intel Iris Xe Graphics
<b>Memory Support:</b>	<b>DDR4 (max. 32GB)</b>
<b>Installed Memory:</b>	None (other version available)
<b>Storage (HDD) Support:</b>	SSD, M.2
<b>Installed Storage (HDD):</b>	<b>None (other version available)</b>
<b>IP Norm:</b>	-----
<b>Temp:</b>	-20°C to 65°C
<b>Storage temperature:</b>	-40°C to 80°C
<b>Humidity:</b>	0% ~ 90%
<b>Others:</b>	Color Silver   VESA mount included
<b>LAN:</b>	6*2.5 GbE Intel i225-V

<b>Wireless LAN card:</b>	Mini PCIe WiFi
<b>3G:</b>	-----
<b>4G LTE:</b>	-----
<b>Bluetooth:</b>	No
<b>Rear Panel (ports):</b>	6xRJ-45   4xUSB 3.1   HDMI   2x Wi-Fi antennas
<b>Front Panel (ports):</b>	4xUSB 3.1
<b>Expansion:</b>	-----
<b>Power:</b>	12V - power supply available in the kit
<b>Watch Dog Timer:</b>	0-255 seconds
<b>CD/DVD Drive:</b>	-----
<b>TV Tuner:</b>	-----
<b>Dimensions:</b>	155x126x52 mm
<b>Fanless:</b>	Yes
<b>Weight:</b>	1.0kg

**Product from the Archive - production finished**



## TECHNICAL SPECIFICATIONS

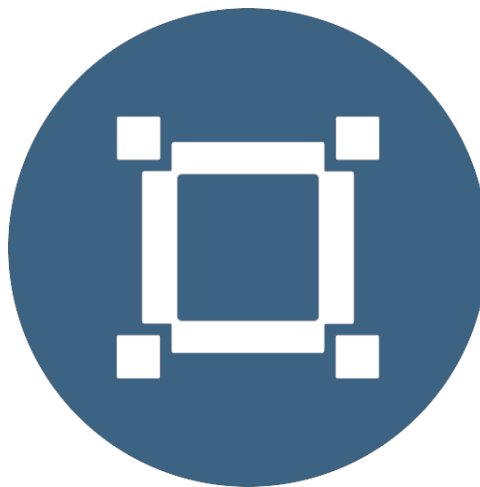
**RESISTANCE AND DURABILITY**

**CONNECTIVITY AND COMMUNICATIONS**

**USAGE**

**VERSIONS AVAILABLE**

Small-sized industrial computers are at the forefront of environments where dust, dirt and moisture are prevalent. They are ideal for applications requiring quiet operation. Small and reliable MiniPCs use heat-pipe technology and aluminum fins for passive cooling. The rugged yBOX-X56 MiniPC Industrial MiniPC is designed for any industrial or non-industrial application that requires continuous operation - 24 hours, 7 days a week.



#### **Small size**

The compact form factor makes the Mini PC fit anywhere you need it and is easy to carry.





### Lightweight design

The computer weighs less than 1.0 kg, so it can be carried comfortably in a bag or backpack.



### Powerful components

Quad-core CPU : Intel  
Core i7 1165G7  
provides improved device  
performance.



### Wireless network



Mini PC can be connected to nearby wireless networks by equipping it with an optional Wi-Fi module.



### Quick start



A modern SSD will increase the speed of application programs and ensure quiet operation of the

computer.



#### Passive cooling

Mini PC's use of passive cooling ensures noiseless operation and slows dust deposition.

\* Optional equipment, available on other versions of the device.

### TECHNICAL SPECIFICATIONS

yBOX-X56	
CPU	Intel Core i7 1165G7 (4x 4.70 GHz)
Operating system	Support: Windows, Linux
RAM	None (8GB   16GB   32GB) DDR4 *

yBOX-X56	
Hard drive	None (SSD: 128GB   256GB   M2: 256GB   512GB   1000GB)*
Graphics card	Intel Iris Xe Graphics
Interfaces	WLAN: 1xMini PCIe WiFi/3G/4G LAN: 6*2.5 GbE Intel i225-V
Connections - front panel	On/Off switch   4 x USB 3.1   HDMI
Connections - rear panel	DC-IN 12V   6xRJ-45   2x Wi-Fi antennas
Available colors	Silver
Measurements	155x126x52 mm
Weight	1.0 kg

\* Optional equipment, available only on specific versions of the device or on request



Detailed specifications of the device are available in the "Technical data" tab.

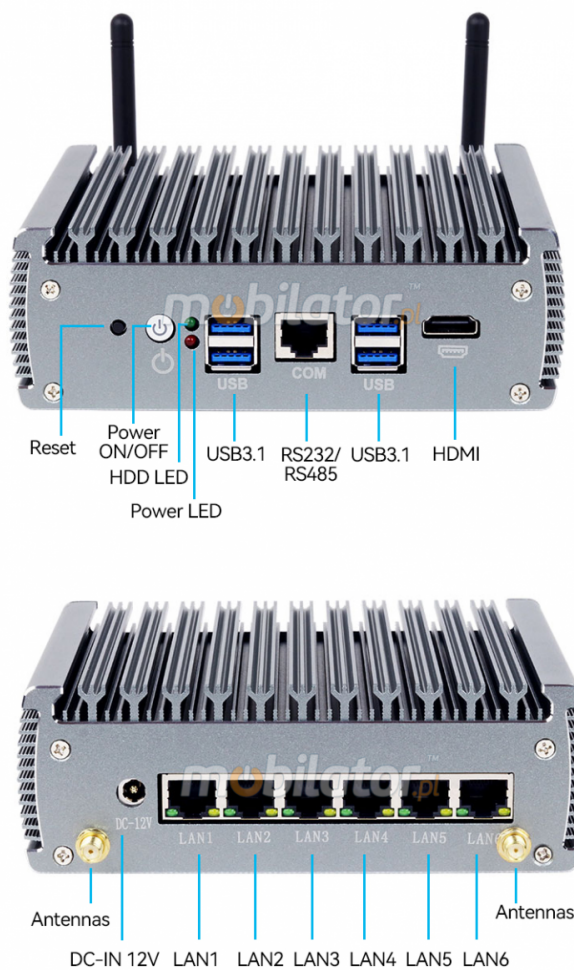
### Powerful CPU



The yBOX-X56 Industrial MiniPC uses a powerful and energy-efficient Intel

Core i7 1165G7 processor. It features four interacting cores for more efficient processing of multiple tasks simultaneously. The shared cache memory, which uses a multi-level hierarchy, is dynamically allocated to each processor core depending on the workload. This leads to a reduction in the average access time to main memory.

## Connectors | Interfaces



## Measurements



Thanks to its small size, the MiniPC has versatile applications both at home, in the office and in industry on the factory floor, for example. It will fit literally anywhere, and thanks to its VESA mount, it can be mounted on the back of a monitor to optimize your workstation.



**Measurements**

155x126x52 mm

**Net weight**

1.0 kg

**Passive cooling**

The Industrial Mini PC uses a proven cooling system, based solely on fixed elements, mainly heat sinks. This system takes advantage of the phenomenon of metals giving up heat energy to the environment - there are no additional moving elements in the form of, for example, fans. Such a solution ensures noiseless operation, lower failure rate and greater protection against dust and other dirt, while reducing the amount of energy consumed.

[up...](#)

## RESISTANCE AND DURABILITY

**Temperature variation**

The yBOX-X56 MiniPC is designed for continuous operation in both very low and high temperatures in the range of -20°C to 65°C. In the case of storing the device turned off, it will already cope with temperatures in the range of -40°C to 80°C as well.

<b>Working Temp.</b>	-20°C to 65°C
<b>Resting Temp.</b>	-40°C to 80°C
<b>Operating Humidity</b>	0% to 90%
<b>Resting Moisture</b>	0% to 90%

## Mechanical damage

The passive cooling system used in the MiniPC yBOX-X56 makes this computer very resistant to various types of mechanical trauma. An additional advantage of industrial computers is a solid structure made of high-quality aluminum and specially designed in such a way that, in addition to high efficiency at heat dissipation, it can also resist any external damage

up...

## CONNECTIVITY AND COMMUNICATIONS

### Wireless network

The dual-band Wi-Fi module provides high-speed network access wherever you can get a connection to secure or open Wi-Fi networks. This is a convenient solution for people who have a router and a wireless network at their workplace or residence, which can be used at no extra charge. The industrial MiniPC yBOX-X56 is equipped with a technology standard - Intel Gigabit, which allows files to be transferred at dizzying speeds of up to 1,000 Mbps.

### Wired LAN

The yBOX-X56 MiniPC has a built-in Intel network card that can run on a high-speed Gigabit Ethernet network



### Support for Wake-on LAN

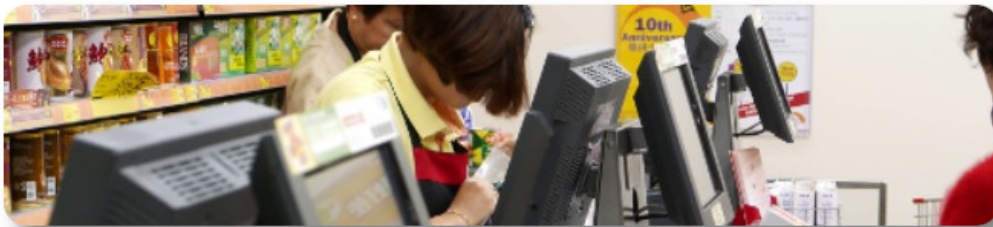
Wake-on LAN (WOL) is a technology that allows you to initiate the activation of a computer remotely. With this technology, it is possible to activate a computer from any point on the network, using another device such as a computer, router or phone.



## USAGE

### Trade and Services

Mini PC is an ideal tool to support us in the implementation of many activities in the field of commerce, small dimensions increase its adaptability for such activities as invoicing or preparation of documentation, which in turn allows us to conveniently and optimally manage sales. The VESA mount mounted to the chassis provides many mounting options, for example, in stores (at the cash register, under the desk top, behind the LCD/LED monitor), in factory halls, or in a delivery vehicle



### Warehouse and logistics

Thanks to its high performance, the industrial computer can be used to connect a number of devices in the warehouse and make their management much easier. Its rugged housing and fanless cooling system will be ideal for the harsh conditions of such premises. The robust design guarantees long-lasting operation, even in dusty and dirty environments



## Transportation and automotive

The small industrial computer can be used in transportation thanks to its ability to operate on 12V power. Then the mini computer can be used in cars, buses, streetcars, cabs, trains and even airplanes. It allows informing the driver about the current state of the vehicle, transmitting its current location to the management center, displaying passenger information, etc. It will perform its functions very well in vehicles where the small size of the device matters.



up...



More photos in full resolution available in the "Gallery" tab."

## VERSIONS AVAILABLE

The yBOX X56 industrial mini computer is offered in several versions to suit different needs. By clicking on the hardware configuration number you will be redirected to the product with the parameters listed in the table below.

	v.0	v.1	v.2	v.3	v.4	v.5
8GB RAM (DDR 4)	—	+	+	—	—	—
16GB RAM (DDR 4)	—	—	—	+	+	—
32GB RAM (DDR 4)	—	—	—	—	—	+
128GB (SSD)	—	+	—	—	—	—
256GB (SSD)	—	—	+	—	—	—
256GB (M.2 2242)	—	—	—	+	—	—
512GB (M.2 2242)	—	—	—	—	+	—
1000GB (M.2 2242)	—	—	—	—	—	+

WiFi + Bluetooth

—

+

+

+

+

+

