



MobiPad S7300N v.3 - Rugged data collector with 4GB RAM, NFC module, Zebra SE4710 2D barcode scanner, 4G, WiFi 5, 64GB memory, Android 12

<b>Category:</b>	UMPC - Ruggedized
<b>Manufacturer:</b>	Mobilator
<b>Operating System:</b>	Android 12
<b>Display:</b>	6"720x1440
<b>Brightness:</b>	400 nits
<b>Processor:</b>	MTK6765 (8x max. 2.0 GHz)
<b>Memory:</b>	4GB RAM DDR48GB (optional)
<b>Hard Drive:</b>	No
<b>Flash Memory:</b>	64GB ROM128GB (optional)
<b>Touch screen:</b>	Yes capacitive screenMulti touch
<b>Durability:</b>	IP67
<b>Drop:</b>	1,5 m
<b>Shock:</b>	---
<b>Vibration:</b>	---
<b>Temperature:</b>	Operating temperature: -10°C ~ 50°CStorage temperature: -40°C ~ 70°C
<b>Humidity:</b>	5%-95% (non-condensing)
<b>1D barcode scanner (reader):</b>	---
<b>2D barcode scanner (reader):</b>	<b>Zebra SE4710</b>

<b>RFID scanner (reader):</b>	NFC
<b>Other:</b>	Electrostatic protection+/-15 kV air discharge +/-8kv contact
<b>Battery:</b>	4850mAh4.35V
<b>Working time on battery:</b>	8h
<b>Fast battery replacement ability:</b>	No
<b>HotSwap battery:</b>	No
<b>LAN:</b>	No
<b>WLAN:</b>	WiFi 5
<b>Bluetooth:</b>	Bluetooth 5.1
<b>WAN:</b>	4G LTE   TD   FDD
<b>GPS:</b>	GPS   Beidou   Galileo   GLONASS
<b>Camera:</b>	5 + 13 Mpx
<b>In/Out:</b>	1x Micro-SIM   1x TF   1x USB-C1x speaker   1x MIC
<b>Optional accessories:</b>	No
<b>Docking station connector:</b>	No
<b>VESA standard – holders and mounts support:</b>	No
<b>COM port:</b>	No
<b>Magnetic card reader (MSR):</b>	No
<b>Microchip card reader:</b>	Nie
<b>Contrast:</b>	Yes
<b>Graphics card:</b>	Power
<b>Chipset:</b>	Helio P35
<b>BIOS:</b>	---
<b>Casing material:</b>	PC
<b>Flash Card Reader:</b>	TF
<b>CD/DVD:</b>	No
<b>Audio:</b>	Microphone   Speaker   Earpiece
<b>Keyboard:</b>	Onscreen

<b>Additional Navigation Devices :</b>	No
<b>Color:</b>	Black
<b>Swivel Hinge:</b>	No
<b>VGA out:</b>	No
<b>TV Out:</b>	No
<b>TV Tuner:</b>	No
<b>Security:</b>	IP67
<b>Waterproof:</b>	IP67
<b>Sand and dust:</b>	IP67
<b>Size:</b>	173 x 79 x 17mm
<b>Fanless casing:</b>	Yes
<b>Weight:</b>	350g

**1 780,43 zł**

net price: 1 447,50 zł

# MobiPad **S7300N**



**SPECIFICATION**

**DATA COLLECTING**

RESISTANCE

WIRELESS COMMUNICATION

APPLICATION

AVAILABLE VERSIONS

The versatile MobiPad S7300N is a rugged device designed for demanding field tasks, where simple design and reliable operation are key. Its robust IP67-rated housing makes the device completely water and dirt resistant, making it ideal for any construction site or workshop. A clear, 400-nit screen allows for easy viewing of data in bright light, while the modern Android 12 system and 4G and Bluetooth 5.1 connectivity ensure fast information flow. A large, replaceable 4850 mAh battery allows for long hours of uninterrupted operation, making this model an ideal tool for harsh and dirty conditions.

[up...](#) [menu...](#)

## SPECIFICATION

### MobiPad S7300N v.3

Processor	MTK6765 Octa-core (8 cores, 8 threads, 2.0 GHz)
Operating system	Android 12

## MobiPad S7300N v.3

RAM DDR4	4GB 8GB * (optional)
ROM	64GB 128GB * (optional)
Communication	4G   BT 5.1   WiFi 5   GPS
Display	6"   720x1440   400 nits
Touch screen	Yes
Protection	IP67
SIM card	Micro SIM
Battery	4850mAh
Connections	1xMicro-SIM   1x TF   1x USB-C 1x speaker   1xMIC
Scanner 2D	2D Newland N6601 *(optional) 2D Honeywell N5703 *(optional) 2D Zebra SE4710
Radio readers	NFC
Guarantee	1 year ** (2-years optional)

\* Optional equipment available in the relevant product versions or on request

\*\* 2-year warranty available on other device versions



Detailed device specification is available in the "Technical data".

A powerful 2.0 GHz octa-core processor guarantees lightning-fast task execution and smooth, lag-free operation. Intelligent energy optimization allows for extended operation in logistics centers and production lines without frequent recharging. Its durable design, combined with efficient components, ensures the MobiPad S7300N remains reliable even during the most intensive field data collection. It's a reliable work tool that combines smooth system operation with the durability required for professional industrial applications.

## Ergonomic design

Weighing just 350 g, the MobiPad S7300N collector features an exceptionally slim and compact design that facilitates everyday use. With precisely chosen dimensions of 173 mm in length, 79 mm in width, and just 17 mm in thickness, the device fits precisely in the user's hand. This well-thought-out design makes the device highly mobile and lightweight during extended field work. The combination of low weight and ergonomic shape guarantees complete comfort of use while maintaining high technical functionality.



[up...](#) [menu...](#)

Capacitive screen



A practical capacitive screen in professional data collectors exploits the phenomenon of electric field disturbances that occur when a conductive finger approaches or touches a glass surface. Sensors placed in the corners or under the glass layer measure the change in electrical capacitance at the point of contact, allowing for immediate and accurate determination of the touch coordinates.

## 400 nits screen

The versatile MobiPad S7300N collector is equipped with a 400-nit screen, ensuring good data visibility even in bright light. The 6-inch display offers a large workspace, facilitating the daily operation of advanced warehouse software. The 720x1440 resolution guarantees a clear and legible display, making reading text messages and graphics very convenient. The handy design ensures that working with the touchpad is efficient and hassle-free.



[up...](#) [menu...](#)

## Connectors, buttons and dimensions

Measuring 173 x 79 x 17 mm and weighing 350 g, this compact device is the perfect blend of portability and industrial durability. Its robust design houses a modern USB-C port and Micro-SIM and TF card slots, ensuring constant connectivity and easy memory expansion in the field.



A dual-camera system with 5 MPx front and 13 MPx rear resolutions allows for efficient visual documentation and high-quality video calls. An integrated speaker and microphone ensure clear voice communication even in demanding working conditions.

<b>Dimensions</b>	173 x 79 x 17mm
<b>Weight</b>	350g

[up...](#) [menu...](#)

## DATA COLLECTING

### 2D scanner

This modern industrial tablet offers exceptional flexibility thanks to the availability of three advanced scanning modules. Depending on your needs, the device can be equipped with the powerful Zebra SE4710 reader, the precise Honeywell N5703 chip, or the efficient Newland N6601 scanner. This versatility

makes the device an exceptionally versatile tool that easily adapts to diverse professional tasks and specific working conditions. The modular design allows for the perfect adjustment of technical parameters to the unique operational requirements of each company.



[up...](#) [menu...](#)

## NFC

NFC technology in data collectors operates through electromagnetic induction, enabling contactless reading and writing of information by bringing the device within a few centimeters of the tag. This model supports a wide range of standards, from the popular Mifare Classic (MF1) and Ultralight (MF0) cards with NDEF recording, to advanced IsoDep (CPU/MF3) processor cards requiring secure authorization. Support for the NFCV protocol (ISO 15693) allows the collector to

handle tags with extended ranges, crucial for label scanning in logistics and warehousing. The entire communication process takes place instantly in the 13.56 MHz radio band, where the built-in reader automatically recognizes the chip type and initiates the appropriate data exchange protocol.






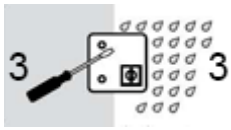





## RESISTANCE

IP67 protection class



IP67 is an international standard for protecting device enclosures from external factors. The first digit, "6," indicates the highest level of dust protection – the device is completely sealed against dust and dirt. The second digit, "7," guarantees protection against the effects of brief immersion in water up to 1 meter deep for 30 minutes, making the device safe for use in rain or other damp environments.

Firts digit	Protection level	Second digit
No special protection	0  0	No special protection
Protection from solid objects greater than 50mm in diameter	1  1	Protection from dripping water

Firts digit	Protection level	Second digit
Protection from object not greater than 12mm in diameter		Protection from vertically dripping water (tilted up to 15°)
Protection from object not greater than 2,5mm in diameter		Protection from sprayed water (tilted up to 60°)
Protection from object not greater than 1mm in diameter		Protection from splashed water
Complete protection against contact, Protection against dust deposit		Protection from water projected from a nozzle
Complete protectionm against contact, protection from infiltration of dust		Protection against heavy seas, or powerful jets of water
		Protection against immersion
		Protection against complete, continuous submersion in water

Fall to 1.5 m

The MobiPad S7300N is designed for use in challenging environments prone to accidental drops. Its robust casing protects its internal mechanisms from heavy impacts, allowing the device to operate without failure even after being dropped from a height of 1.5 meters onto a hard floor. This design ensures the device will function reliably during everyday use in large warehouses and noisy factories.

## Extreme temperatures

The MobiPad S7300N's rugged construction allows it to operate reliably in demanding environments, regardless of extreme weather conditions. It operates without issue in temperatures as low as  $-10^{\circ}\text{C}$  or as high as  $+50^{\circ}\text{C}$ . When powered off, the device can withstand even harsher conditions, withstanding temperatures as low as  $-40^{\circ}\text{C}$  and as high as  $+70^{\circ}\text{C}$ . This durability ensures that the electronics will not fail in freezing cold storage rooms or extremely hot warehouses.

**Operation temperature :  $-10^{\circ}\text{C} \sim 50^{\circ}\text{C}$**

---

**Storage temperature :  $-40^{\circ}\text{C} \sim 70^{\circ}\text{C}$**

---



<b>Operation Temp.</b>	-10 to 50
<b>Storage Temp.</b>	-40 to 70
<b>Humidity</b>	from 5% to 95% (non-condensing)

[up...](#) [menu...](#)

## WIRELESS COMMUNICATION

### GPS Navigation

The MobiPad S7300N features four independent global positioning satellite systems (GNSS), which together provide more accurate and reliable location. Each constellation (American GPS, Russian GLONASS, European Galileo, and Chinese Beidou) transmits signals from orbit, and a receiver in the device calculates its position by measuring the time of arrival. A device that uses signals from multiple systems simultaneously (so-called multi-GNSS) has a larger number of visible satellites, which translates to better performance in challenging environments (e.g., in cities or forests) and increased accuracy—up to several meters.

### Bluetooth 5.1

Bluetooth 5.1 introduces Direction Finding, which allows devices to precisely determine the direction of a signal, not just its strength. This standard utilizes advanced techniques to analyze the signal's angle of arrival and departure using multiple antennas. This standard also simplifies the connection process, allowing devices to find each other faster and consume less power. In practice, this allows for navigation within buildings with centimeter-level accuracy, allowing, for example, precise location of a specific product on a shelf in a large warehouse.

## Wi-Fi network

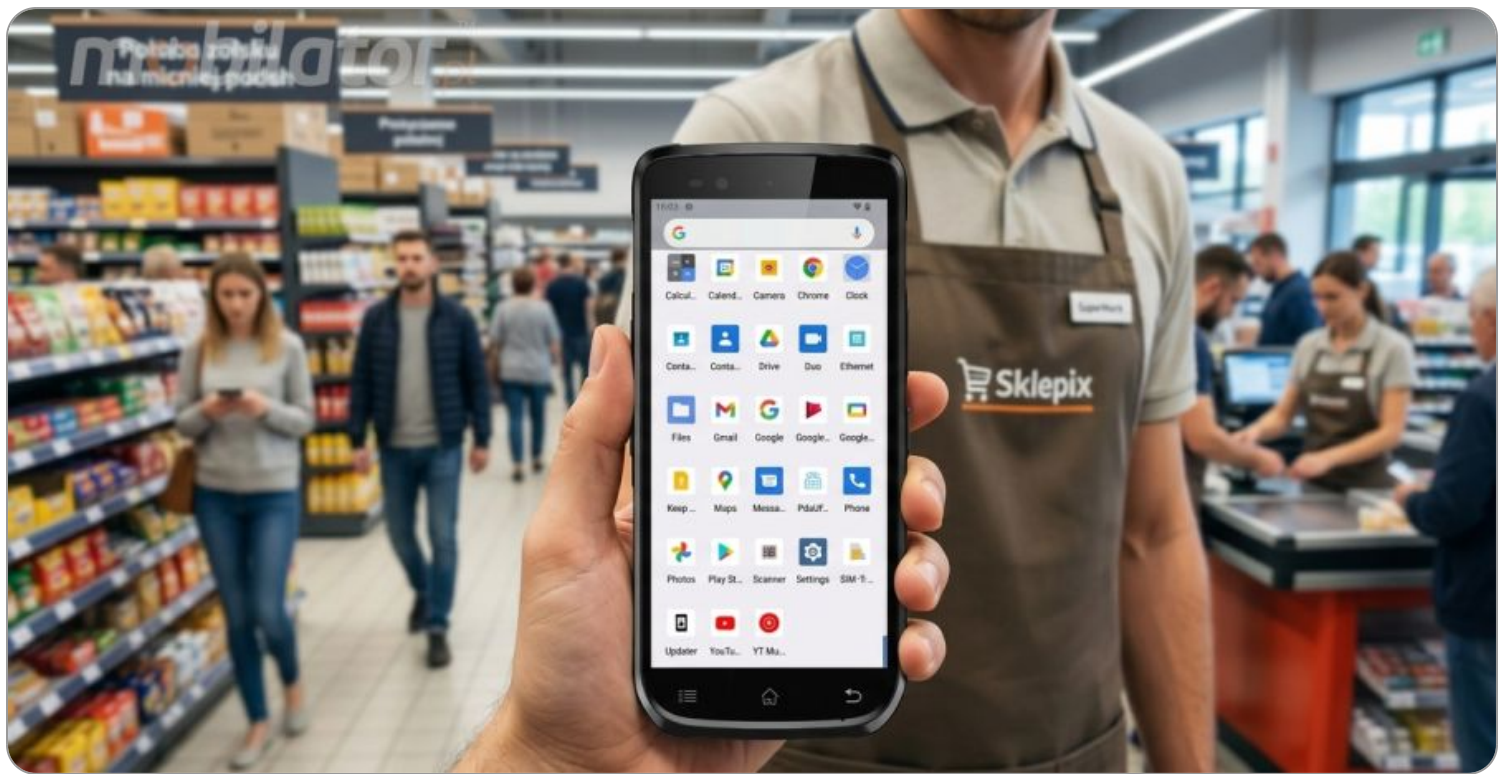
The network operates on two frequency bands, separating the longer-range 2.4 GHz zones from the faster 5 GHz channels. Support for the 802.11 a/b/g/n/ac standards ensures compatibility with multiple generations of devices, from older laptops to the latest smartphones. This allows the device to flexibly manage traffic, offering stability in weaker signals and high performance where conditions allow.

<b>Standards</b>	2.4GHz & 5GHz
<b>Frequencies</b>	802.11 a/b/g/n/ac

## APPLICATION

### Trade and Service

Thanks to its compact design and extensive connectivity options, including 4G and Bluetooth 5.1, the MobiPad S7300N is the ideal mobile terminal for shelf-based sales or customer service at service points. The high-quality 6-inch display with 400 nits of brightness ensures clear visibility of QR codes and products even in bright light, streamlining the transaction process and offer presentation. SIM card slots and a USB-C port allow for flexible expansion of the device with peripherals, such as portable receipt printers, essential in modern food service and distribution. Its comfortable-to-hold design makes it a versatile tool for advisors and warehouse workers who need quick access to product databases outside their workstations.



[up...](#) [menu...](#)

## Industry and Construction

The rugged MobiPad S7300N is the ideal device for industrial and construction tasks, powered by Android 12. Its durable IP67-rated design makes it fully dust- and flood-resistant, allowing for safe operation in challenging environments. WiFi 5 and Bluetooth 5.1 modules ensure stable connectivity, while SIM and memory card slots facilitate data management on the go. The device features dual cameras – a 5 MP front camera and a 13 MP rear camera – ideal for taking technical photos and documenting work progress. A clear speaker and microphone enable efficient voice communication, while the modern Type-C connector ensures fast charging and easy file transfer.



## Warehouse

The modern MobiPad S7300N mobile terminal is a robust tool that significantly accelerates everyday logistics operations. This device excels at rapid inventory management thanks to its built-in barcode reader and proximity module. This allows for efficient scanning of multiple items at once, eliminating the need to precisely align the laser with each label. The device's robust construction meets the IP67 ingress protection standard. This makes the reader dust- and water-resistant, as well as safe against sudden impacts with hard ground in a dusty warehouse. A fast cellular network ensures a constant flow of information, sending real-time reports to the database. A long operating time is guaranteed by a capacious, replaceable 4850 mAh battery. Additionally, a universal Type-C port allows for efficient charging and easy connection of various additional

devices.



[up...](#) [menu...](#)

## AVAILABLE VERSIONS

This unique data collector is available in several versions to suit different needs. Clicking on a configuration number will display its detailed parameters in a table. Upon request, we can also prepare a custom configuration, even one outside of our standard offering.

	v.1	v.2	v.3	v.4	v.5	v.6
4 + 64GB	+	+	+	—	—	—

8 + 128GB	—	—	—	+	+	+
Newland N6601	+	—	—	+	—	—
Honeywell N5703	—	+	—	—	+	—
Zebra SE4710	—	—	+	—	—	+



More photos in full resolution available in the "Gallery".