

MobiPad **XX-B62**



MobiPad XX-B62 v.10 - Industrial data inventory with a 2D code scanner (Zebra SE4710) - with IP65 resistance standard and NFC + 4G LTE + Bluetooth + WiFi (4GB + 64GB)

Category:	UMPC - Ruggedized
Manufacturer:	Mobikator
Operating System:	Android 10.0
Brightness:	-----
Processor:	Cortex A73 2.0GHz Octa-Core (8 x 2.0GHz)
Memory:	4GB
Hard Drive:	-----
Flash Memory:	64GB
Touch screen:	Yes
Durability:	IP65
Drop:	1.5 meters
Shock:	-----
Vibration:	-----
Temperature:	Operating temperature: -20°C -- +50°C Storage temperature: -20°C -- +70°C
Humidity:	5% - 95% non-condensing
1D barcode scanner (reader):	Option
2D barcode scanner (reader):	2D scanner - Zebra SE4710

RFID scanner (reader):	No
Other:	NFC
Battery:	3.8V; 5200mAh Li-Ion
Working time on battery:	-----
Fast battery replacement ability:	No
HotSwap battery:	No
LAN:	-----
WLAN:	2.4GHz/5.0GHz Dual Frequency, IEEE 802.11 a/b/g/n/ac
Bluetooth:	Bluetooth 4.2
WAN:	TDD-LTE Band 38, 39, 40, 41; FDD-LTE Band 1, 2, 3, 4, 5,7,8,12, 17, 20; WCDMA(850/1900/2100MHz); GSM/GPRS/Edge (850/900/1800/1900MHz);
GPS:	Embedded A-GPS, accuracy of 5m.
Camera:	Back: 13Mpx (Flash). Front: 5MPx
In/Out:	USB Port TF Card 2 Port SIM 2 PSAM MicroSD DC
Optional accessories:	Additional battery charging cradle
Docking station connector:	-----
VESA standard – holders and mounts support:	-----
COM port:	No
Magnetic card reader (MSR):	-----
Microchip card reader:	-----
Contrast:	-----
Graphics card:	-----
Chipset:	-----
BIOS:	-----
Casing material:	high quality plastik and rubber
Flash Card Reader:	microSD/TF max. 256GB
CD/DVD:	-----
Audio:	Built-in microphone and speaker

Keyboard:	Touch screen + buttons POWER Volume +/- 4x "F" 2x functional keys
Additional Navigation Devices :	-----
Color:	Black and orange
Swivel Hinge:	-----
VGA out:	-----
TV Out:	-----
TV Tuner:	-----
Security:	IP65
Waterproof:	IP65
Sand and dust:	IP65
Size:	170.8mm x 81mm x 28.6mm400g
Fanless casing:	Yes
Weight:	400g

2 297,03 zł

net price: 1 867,50 zł

MobiPad **XX-B62**



TECHNICAL SPECIFICATION

RESISTANCE AND DURABILITY

CONNECTIVITY AND COMMUNICATION

DEVICE APPLICATION

AVAILABLE VERSIONS

ACCESSORIES

Small dimensions industrial MobiPad XX-B62 excel in environments where dust, dirt and moisture predominate. They are ideal for applications requiring quiet operation. Small and reliable umpc use heat-pipe technology and plastic fins for passive cooling. The robust industrial laptop is a device designed for all industrial and non-continuous applications requiring continuous operation - 24 hours, 7 days a week.



Reinforced housing

The reinforced MobiPad case is resistant to mechanical damage and external factors such as temperature difference.



Lightweight design

The data terminal weight does not exceed 0.5 kg, so it can be conveniently carried in a bag or backpack.



Efficient components

The Cortex by ARM octa-core CPU provides improved device performance.



Wireless network

The umpc can be connected to nearby wireless networks by equipping it with an installed Wi-Fi module.



Quick start

A modern eMMC memory will increase the speed of application programs.



Passive cooling

The use of passive cooling in the umpc ensures silent operation and slows dust deposition.

go

Performance	
Processor	Cortex-A73 - 2.0 GHz Octa Core
Operating system	Android 10.0
RAM	4 GB
Flash Drive	64 GB
Interfaces	
Connectivity	Wi-Fi IEEE (802.11 a/b/g/n/ac ; 2.4 GHz/5GHz) LTE, WCDMA, GSM, GPRS, Edge Bluetooth 4.2
Connectors	2x SIM card slots 1x USB 1x MicroSD (max 256GB) 1x TF card 1x Docking Station slot 2x PSAM
Other	
NFC	YES 13.56Mhz
Drop	1.5m./5ft

Other	
Battery	5200mAh, 3.8V
Camera	Back: 13Mpx (Flash). Front: 5MPx
Available colors	Black and orange
Dimensions	170.8 mm x 81 mm x 28.6 mm
Weight	0.400 kg
2D Scanner	Zebra SE4710



Detailed device specification is available in the "Technical data" tab.

EFFICIENT PROCESSOR

The industrial umpc MobiPad XX-B62 uses an efficient and energy-saving ARM Cortex Octa Core processor. Inside it there are four cooperating cores enabling more efficient processing of many tasks at the same time. The shared cache memory in which the multilevel hierarchy is used is dynamically allocated to each processor core depending on the load. This reduces the average access time to the main memory.

INTERFACES



DIMENSIONS



The ergonomics of work is provided by a functional keys and a color touch screen, everything is enclosed in a slim and small housing. Thanks to this, you can take it anywhere with you.

RESISTANCE

TEMPERATURES

XX-B62 by MobiPad is designed for continuous operation in both very low and high temperatures ranging from -20°C to 50°C . If the device is switched off, it can already handle temperatures in the range of -20°C to $\sim 70^{\circ}\text{C}$.




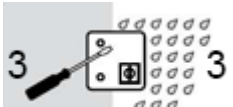







Work temp.	-20°C — ~50°C
Storage temp.	-20°C — ~70°C
Humidity	5% — 95%

IP65 PROTECTION

IP stands for Ingress Protection and is essentially a rating system developed by the International Electrotechnical Commission or the IEC. The system is now being used to classify different degrees of protection against intrusion or immersion. The

IP rating is usually followed by two digits. The first indicates the level of dust-resistance, the second water resistance. Dust-resistance levels goes from 0 up to 6 while water-resistance goes from 0 to 8.

The first digit [x] Protection against solid objects	Protection Level	The second digits [y] Protection against liquids
No special protection	0  0	No special protection
Protection from solid objects greater than 50mm in diameter	1  1	Protection from dripping water
Protection from object not greater than 12mm in diameter	2  2	Protection from vertically dripping water (tilted up to 15°)
Protection from object not greater than 2,5mm in diameter	3  3	Protection from sprayed water (tilted up to 60°)
Protection from object not greater than 1mm in diameter	4  4	Protection from splashed water
Complete protection against contact, Protection against dust deposit	5  5	Protection from water projected from a nozzle
Complete protection against contact, Protection from infiltration of dust	6  6	Protection against heavy seas, or powerful jets of water
	 7	Protection against immersion
	 8	Protection against complete, continuous submersion in water

MECHANICAL DAMAGE

The passive cooling system used in the umpc combined with the eMMC memory make this computer very resistant to various types of mechanical injuries. An additional advantage of industrial computers is a solid construction made of high quality plastic and specially designed in such a way that in addition to high efficiency in heat dissipation, it can also resist any external damage.

[go up...](#)

CONNECTION

WIRELESS NETWORK

The dual-band Wi-Fi module provides quick access to the network wherever you can connect to secured or open Wi-Fi networks. This is a convenient solution for people who have a router at home or place of residence and a wireless network that can be used at no extra charge. Industrial umpc X14 has been equipped the standard of - 802.11(a/b/g/n), which allows transfer of files at a dizzying speed of up to 300 Mb / s.



BARCODE SCANNER

Barcode Reader allows you to read, decode and transfer stored data in barcode to your computer. Thanks to dynamic scanning method and the large range of reading, data collector is capable to carefully collecting data, which helps to increase the rate and efficiency of work. Simplified installation procedure, convenient and intuitive design allow to start scanner work very easy and quickly.

2D Scanner

Zebra SE4710

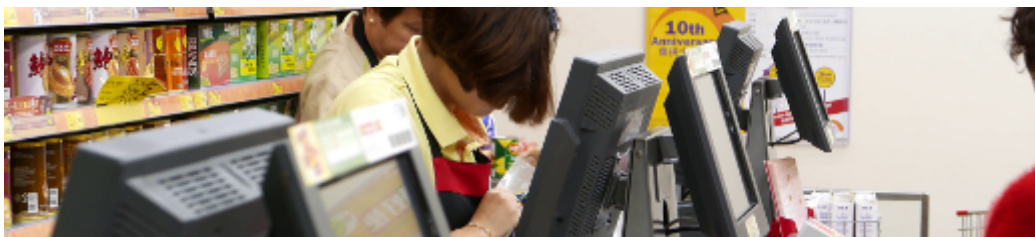


[go up...](#)

APPLICATIONS

TRADE AND SERVICES

Industrial umpc is an ideal tool to support us in the implementation of many activities in the field of trade, small dimensions increase the possibility of its adaptation to activities such as issuing invoices or preparing documentation, which in turn allows us to convenient and optimal sales management.



WAREHOUSE AND LOGISTICS

Thanks high performance an industrial umpc can be used to connect multiple devices in a warehouse and make their management much easier. Its rugged casing are ideal for harsh environments in such rooms. The solid construction guarantees long-lasting work, even in environments with high dustiness and dirt.



WORKSHOP AND DIAGNOSTIC

With the help of dedicated connectors supported by our data collector, it can be used as a diagnostic tool for cars and machines with an on-board computer, thanks to which we are able to independently detect faults and also test specific systems.



More pictures of the device available in the ["Gallery"](#) tab.

VERSIONS

The industrial MobiPad XX-B62 umpc is offered in several versions to suit different needs. By clicking on the number of the hardware configuration you will be redirected to the product with the parameters given in the table below. In addition, it is possible to create a configuration that is currently unavailable on the customer's request.



ACCESSORIES



Our data collector can also be equipped with various accessories, you will find them in the manufacturer's accessories tab and in the configurator. Accessories for the above model are available: additional battery or charging cradle.



	v.1	v.2	v.3	v.4	v.5	v.6	v.7	v.8	v.9	v.10
NFC	+	-	-	-	-	-	+	+	-	+
HF	-	+	-	+	-	-	-	-	-	-
scanner 1D Zebra SE965	-	-	+	+	-	-	-	-	-	-
scanner 2D Mindeo ME5600	-	-	-	-	+	-	-	-	-	-
scanner 2D Zebra SE4710	-	-	-	-	-	+	+	-	+	+