



## Notebook - Clevo P170EM v.2

<b>Category:</b>	CLEVO Powerful Notebooks
<b>Manufacturer:</b>	Clevo
<b>WAN:</b>	No - optional yes
<b>WLAN:</b>	Yes - Combo Card (BT+WLAN802.11bgn)
<b>Bluetooth:</b>	Yes - Bluetooth v3.0
<b>Processor:</b>	i5-3360M (22nm, 2.80 3.50GHz Turbo, DDR3-1600MHz, 3MB L3 cache, TDP: 35W)
<b>Memory:</b>	8GB SODIMM DDR3 204Pin PC1600 Kingston
<b>Chipset:</b>	Mobile Intel® HM77 Express Chipset
<b>Display:</b>	T17.3" FHD/ GT (1920*1080) 16:9 Widescreen Notebook MATT
<b>Graphics card:</b>	Nvidia Geforce GTX-670MX (N13E-GR) 3GB
<b>Touch screen:</b>	No
<b>Swivel Hinge:</b>	No
<b>Hard Drive:</b>	HDD 500 GB WD SCORPIO BLACK 7200 RPM, 16MB cache
<b>BIOS:</b>	-----
<b>VGA out:</b>	Yes - HDMI , Display Port , DVI-I
<b>LAN:</b>	10/100/1000MB Base-TX Ethernet LAN
<b>Camera:</b>	Yes - 2.0 FHD Mpx

<b>Audio:</b>	Yes: External 7.1CH audio output supported by headphone, microphone, Line-in, and S/PDIF jack
<b>Security:</b>	Kensington Lock, Fingerprint security
<b>TV Out:</b>	HDMI + Display Port
<b>In/Out:</b>	USB 2.0 port, 3x USB 3.0, eSATA port (USB 3.0 combo), Mini IEEE 1394a, Display port 1.1a , DVI-I output port (Single link), HDMI™ output port (with HDCP), Headphone jack, Microphone jack, S/PDIF output jack, Line-in jack, RJ-45 LAN port, DC-in j
<b>In/Out:</b>	USB 2.0 port, 3x USB 3.0, eSATA port (USB 3.0 combo), Mini IEEE 1394a, Display port 1.1a , DVI-I output port (Single link), HDMI™ output port (with HDCP), Headphone jack, Microphone jack, S/PDIF output jack, Line-in jack, RJ-45 LAN port, DC-in j
<b>Keyboard:</b>	QWERTY - function keys, illuminated
<b>Additional Navigation Devices :</b>	Touch pad with scrolling function
<b>Battery:</b>	Li-ion / 8 Cells / 5200mAh - 76.96Wh
<b>Working time on battery:</b>	360 min
<b>Size:</b>	412 x 276 x 41,8~45,4 mm / 3,9 kg (with battery) + 0,8kg power adapter
<b>CD/DVD:</b>	DVD DUAL SuperMulti
<b>Operating System:</b>	-----
<b>Flash Card Reader:</b>	Yes - 9-in-1 (MMC / RSMHC - SD / mini SD / SDHC / SDXC - MS / MS Pro / MS Duo)
<b>GPS:</b>	No
<b>TV Tuner:</b>	No
<b>Color:</b>	Black
<b>Other:</b>	----

## Product from the Archive - production finished



Founded in 1983, **CLEVO** has achieved a fine reputation as a developer and manufacturer of notebook computers. Due to our product positioning in the high-tech market, Clevo has won many awards in computer product evaluation conducted throughout the world.

**CLEVO**<sup>®</sup>



## Visually Stunning Full 1080P HD LED Display

Breath-taking **graphics** generated by a state-of-the-art engine come alive only when displayed in stunning full 1080P. The P170EM 17.3" full 1080P **HD** widescreen with LED-backlit display technology delivers the most **brilliant** color and contrasts that will dazzle your eye whether you're watching a Blu-ray movie or playing a game.



With intelligent performance that accelerates in response to demanding tasks, such as playing games and editing photos, the **Intel® Core™ i7** third generation processor moves faster when you do.

The **Intel® Core™ i7™** processor automatically allocates processing power where it's needed most. Whether you're creating HD video, composing digital music, editing photos or playing the coolest PC games — with the **Intel® Core™ i7** processor you can multitask with ease and be more productive than ever.

LONG LIFE LED TECHNOLOGY

Semiconductor LED backlit display (LED, **Light-Emitting Diodes**) ensures an even and uniform light across the screen. LED backlighting offers many advantages: low operating voltage, therefore low energy consumption and prolongs **battery life**, precise control of light intensity, longer than traditional displays of component life, finally – not less important – protecting the environment.

Wide Screen display is a very important feature. Wide Screen makes the display look bigger. The 16:9 aspect ratio is the most popular. Movie theaters and high end home televisions all display in 16:9 wide screen ratio just like these do. This has a backlit display for extra brightness. The monitor will look good during day or night. You can adjust all the color and picture settings (color, contrast, brightness, etc).

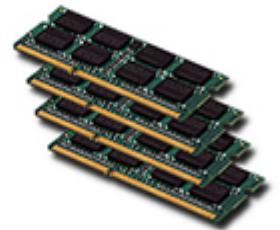
Get ready to immerse yourself with an unrivaled auditory experienced courtesy of the P170EM powerful **Sound Blaster X-Fi MB2** audio platform featuring the THX TruStudio™ Pro and **Creative EAX™ ADVANCED HD 5.0**. The THX™ TruStudio Pro audio technology creates unprecedented levels of audio realism and adds dynamics and punch to every gaming sound and surround effect. The Creative **EAX™ ADVANCED HD 5.0** features state-of-the-art multi-environment rendering and reverb modeling and delivers an amazingly realistic and immersive 3D gaming experience through the P170EM built-in speakers and subwoofer made by **Onkyo™**.



[go top](#)

Enjoy a dramatic boost in **multitasking** performance with more system memory thanks to the quad SODIMM memory slots. With up to **32GB** of Dual-Channel DDR3 memory, your system will never lag while multimedia editing, **graphics** design/3D modeling, and graphic-intensive gaming at once.

FOUR  
DDR3  
MEMORY  
MODULES  
CAPABLE

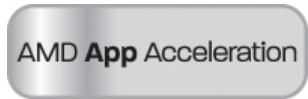


The **AMD Radeon HD 7970M** is a 28nm DirectX 11 graphics card based on the **GCN** (Graphics Core Next) architecture. Built primarily for large laptops, the advanced card is positioned near the top of the high-end category as of 2012. The design of the Radeon HD 7970M has its roots to the **Pitcairn** chip as found, for example, on the desktop **Radeon HD 7870**. The 7970M in particular is similar to its desktop 7870 counterpart with **1280 1D shader cores** and **80 texture units**, but has a core clock of only 850 MHz vs the 1000 MHz of the HD 7870. As a result, general performance of the HD 7970M is expected to lie somewhere between the 7850 and 7870 desktop Radeon cards.



Supporting multiple independent display outputs simultaneously, AMD **Eyefinity technology** delivers innovative graphics display capabilities enabling massive desktop workspaces and ultra-immersive visual environments for the ultimate panoramic computing experience.

Powered by a set of innovative hardware and software technologies working in concert behind the scenes, AMD **App Acceleration** gives you enhanced speed and performance beyond traditional graphics and video processing.



AMD **HD3D Technology** is supported by an advanced and open ecosystem that, in conjunction with specific AMD hardware and software technologies, enables 3D display capabilities for many PC applications and experiences. Your PC has evolved, offering unprecedented amount of games, photos and **movies** for you to play, watch, design, create, share and download in 3D. With the arrival of the latest in 3D technology you can now enjoy an enhanced visual experience on Stereo **3D-capable** desktops and notebooks powered by AMD HD3D Technology.

New Portable Devices | NIP: 872-120-56-82 | Mobile.: +48 508 235 505 | e-mail: sklep@mobilator.pl

Account number: ALIOR BANK SA 68 2490 0005 0000 4500 2328 8078

The NVIDIA GeForce leverages NVIDIA's revolutionary new architecture to deliver up to 60% more performance than the previous generation\*. Built for speed and efficiency, the GeForce® GTX 680M GPU outpaces the competition by up to 30%\*. Plus, **NVIDIA GeForce™** drivers ensure that you're always getting the most out of your GPU for the ultimate gaming experience. (Option - **670M / 675M / 680M**)



NVIDIA® **CUDA™** technology unlocks the power of the GPU's processor cores to accelerate the performance for even the most demanding system tasks such as video transcoding. The **HM™** lets you play **games** the way they're meant to be played without having to worry if your video card is up to the task.

**NVIDIA® Optimus™** technology intelligently optimizes your notebook PC, providing the outstanding graphics performance you need, when you need it, all the while extending **battery life** for longer enjoyment.



**NVIDIA PhysX** technology helps games play better and feel better by making interaction with environments and characters far more **realistic** than ever before. By making behavior more realistic, the graphics look and “feel” better. PhysX is designed specifically for hardware acceleration by **powerful** processors with hundreds of

processing cores. Because of this design choice, NVIDIA GeForce GPUs provide a dramatic increase in physics processing power, and take gaming to a new level **delivering** rich, immersive physical gaming environments with features such as:

- Explosions that create dust and collateral debris
- Characters with complex, jointed geometries, for more life-like motion and interaction
- Spectacular new weapons with incredible effects
- Cloth that drapes and tears natural

Microsoft DirectX is the graphics technology powering all of today's hottest games. The latest version—**DirectX 11**—features tessellation for film-like geometric detail, compute shaders for custom graphics effects, and improved **multithreading** for better hardware utilization. With DirectX 11, tessellation and displacement mapping finally come together in a happy union, and already, developers are jumping on board. Popular games like **Alien vs. Predator** and **Metro 2033** use tessellation to produce smooth-looking models, and developers at Valve and id Software have done promising work on applying these techniques to their existing game characters.

[go top](#)

Feel secure in the knowledge your system is protected by the most advanced methods possible. The **Clevo P170EM** utilizes a fingerprint reader for added security and easy log in with a simple finger swipe.



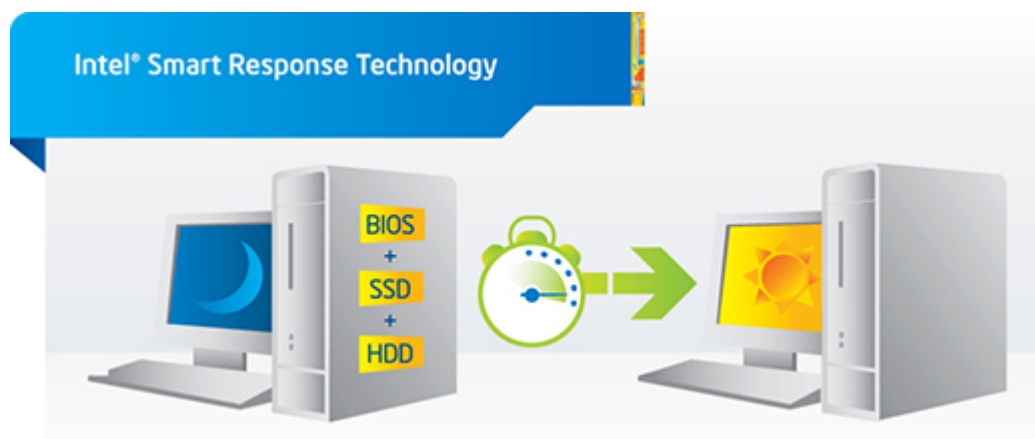
NVIDIA® company **CLEVO** leaving the needs of laptop users comply P170 easy access to system components. In this way without any problems **replacing** the drive with a larger one, increase the efficiency of bone RAM or simply clear the laptop with residual dust.

[go top](#) [menu](#)

Inside the laptop are two disk made in **Flash SSD** (Solid State Disc) technology. This means that they has no moving parts inside. Disk reads and writes data 2 times faster than standard 2,5" disks. In addition, it does not heat up at all, consuming little energy and discharge CPU up to 10%. Computer with **SSD** drives runs much faster.

# SSD DRIVES

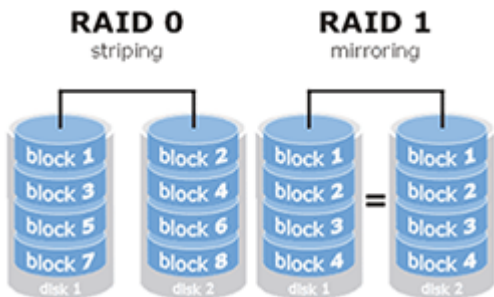
The Intel Smart Response Technology implements storage I/O caching to provide users with faster response times like system boot and application startup. With an optional **mSATA SSD** drive installed, the Clevo P170EM is capable of configuring the SSD drive as cache memory between the hard disk and system **memory** for your most frequently used files. The feature will enhance your experience whether you are photo editing, web browsing or **gaming**.





Laptop is also equipped with third **ultra-fast** SSD disk using **mSATA** connector. In addition, the computer can be connected another devices via an external **eSATA** connector.

Get more with your HDDs thanks to **RAID** technology. RAID 0 joins physical drives into a single logical drive which allows you to better use of space. With RAID 1 your data will be **safer** because one disk is an exact copy of the other. Even if one disk fail all data will still be available on the second disk.

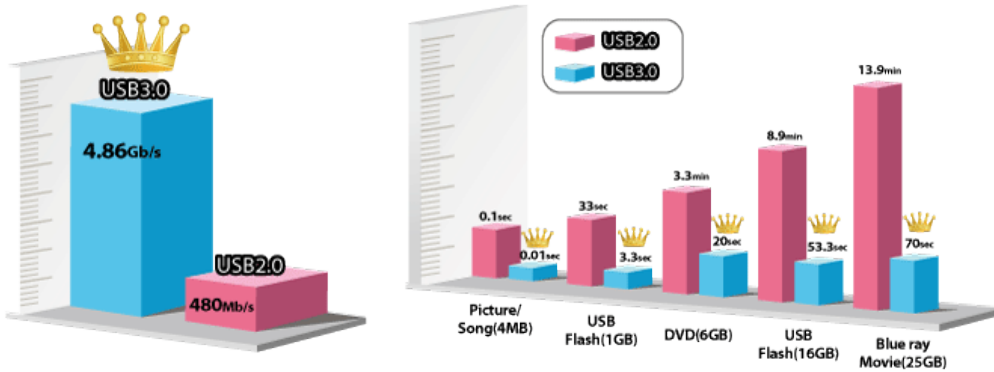


With **RAID 1** data reading accelerates almost twice. Even if one disk fail all data will still be available on the second disk.

With RAID 1 data reading accelerates almost **twice**.

[go top](#)

The CLEVO P170EM is equipped with the latest **USB 3.0** technology that can deliver transfer speed up to 10 times faster than USB 2.0. This allows **faster** transfer of HD content. USB charging is also faster - port provides a 900mA current, offering power saving features by switching to standby mode on unused devices, or turning them off.



[go top](#)

Make your **P170EM** a stylish focal point with the full color programmable backlight keyboard. Choose from 7 instant effects or **customize** your own color combinations in 3 different keyboard sections with the Keyboard Backlight Application.



[go top](#)



- 1. Power Button
- 2. Onkyo Speakers
- 3. Led Status Indicators
- 4. Illuminated Keyboard

- 5. Built-in Microphone
- 6. Touch Pad with Scroll Slider
- 7. Fingerprint Reader



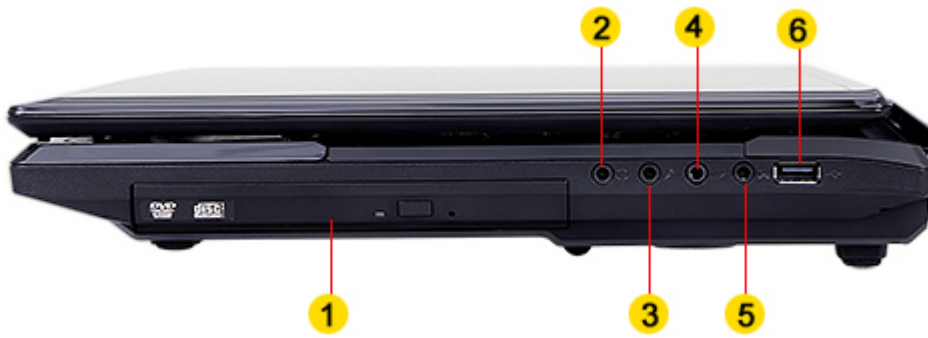
- |   |                               |
|---|-------------------------------|
| 1. Sub-woofer                                     | 3. 2nd Hard Drive Compartment |
| 2. CPU/GPU/mSata SSD & Memory Modulec Compartment | 4. Primary HDD Compartment    |
|   | 5. Battery Pack               |



- |   |                                |
|---|--------------------------------|
| 1. Mini I-EEE-1394a Port                        | 4. e-SATA Port (USB 3.0 Combo) |
| 2. RJ-45 LAN Port (Gigabit)                     | 5. 9-in-1 Card Reader          |
| 3. 2 USB 3.0 Ports (1x Powered USB Port, AC/DC) |                                |



1. Power Status Indicators



- |                         |                    |
|-------------------------|--------------------|
| 1. Optical Device Bay   | 4. S/PDIF Out Jack |
| 2. Headphone - Out Jack | 6. Line - In Jack  |
| 3. Microphone - In Jack | 7. USB 2.0 Port    |

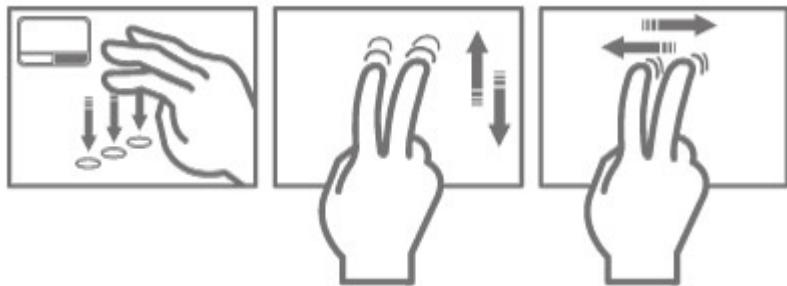


- |                                |                      |
|--------------------------------|----------------------|
| 1. Kensington Lock             | 5. DVI-I Output Jack |
| 2. GPU Vents                   | 6. DC-In Jack        |
| 3. Displayport 1.1 Output Jack | 7. CPU Vents         |
| 4. HDMI 1.4a Output Jack       |                      |

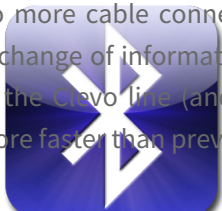
[go top](#)



The integrated **multi-gesture** touchpad on the notebook allows user to perform various operations by tapping multiple fingers and making gestures. When using a computer touchpad can accurately detect multi-finger movements. Using touchpad is not only **effective** but also enjoyable.



No more cable connections! Thanks to the Bluetooth® **3.0** technology that allows the exchange of information among different devices, you can easily use all the accessories of the Clevo line (and more) with an in-built special software. **Bluetooth 3.0** is much more faster than previous versions of this interface.



The great expansion of **WiFi** technologies to wireless connect to the Internet both in professional and domestic settings through the public or private **hot-spots**, make your Clevo inseparable resource for your daily activities. New "n" standard provides great transfer up to 150Mbit/s. This feature allows you to download and upload data in short period of time.



Enter the world of online communication and take advantage of the **built-in** video camera to participate in a video conference or simply chat with your friends face-to-face no matter how far apart you may be. Thanks to the 2.0 megapixel high-resolution **camera**, your video will have never looked so real.



**CLEVO P170** takes mobile entertainment to the next level! The fastest notebook with 17.3" screen made until now. P170EM offers newest third generation **Intel Core i7** mobile processors and one of the best nVidia GeForce graphic card - GTX 680M.



[more photos in "Gallery"...](#)

[specification of this version is available in the "Technical data" ...](#)