



Notebook - Clevo P370EM v.9

| | |
|-----------------------|--|
| Category: | CLEVO Powerful Notebooks |
| Manufacturer: | Clevo |
| WAN: | No |
| WLAN: | Yes - 802.11 b/g/n |
| Bluetooth: | Yes - 3.0 + EDR |
| Processor: | i7-3940XM (22nm, 3.00GHz, DDR3-1600MHz, 8MB L3 cache, TDP: 55W) |
| Memory: | 32GB (4x8) KINGSTON HyperX 1600 MHz DDR3 CL9 |
| Chipset: | Mobile Intel® HM77 Express |
| Display: | 17.3 |
| Graphics card: | 2 x Nvidia GeForce GTX-680M (N13E-GTX) 4GB (total 8GB) |
| Touch screen: | No |
| Swivel Hinge: | No |
| Hard Drive: | 2x - Samsung SSD 840 PRO 512GB (Read/Write-560/520MB/s); 1x - Adata SSD XPG SX300 128GB mSATA3 |
| BIOS: | ----- |
| VGA out: | Yes - HDMI , Display Port |
| LAN: | Yes |

| | |
|--|---|
| Camera: | Yes - 2.0 MPx |
| Audio: | Tak - External 7.1 CH, Embedded 2.1 CH |
| Security: | Yes - Kensington Lock |
| TV Out: | HDMI + Display Port |
| In/Out: | 1 x USB 2.0, 4 x USB 3.0 (1 x 900mA USB), 1 x eSATA (USB 2.0 combo), 1 x Display port, 1 x HDMI™ out (with HDCP), 1 x Headphone jack, 1 x Microphone jack, 1 x S/PDIF output jack, 1 x Line-in jack, 1 x RJ-45 LAN port, 1 x DC-in jack |
| Keyboard: | QWERTY |
| Additional Navigation Devices : | Yes - Touchpad |
| Battery: | Lithium-Ion 8 cell 89.21WH |
| Working time on battery: | 260min depends of version |
| Size: | 419(W) x 293(D) x 39.3~49.7(H) mm, weight 3,9 kg |
| CD/DVD: | BlueRay Writer |
| Operating System: | No |
| Flash Card Reader: | 9-in-1 (MMC/RSMC/SD/miniSD/SDHC/SDXC/MS/MS Pro/MS Duo) |
| GPS: | No |
| TV Tuner: | No |
| Color: | Czarny |
| Other: | Fingerprint reader |

Product from the Archive - production finished



Founded in 1983, **CLEVO** has achieved a fine reputation as a developer and manufacturer of notebook computers. Due to our product positioning in the high-tech market, Clevo has won many awards in computer product evaluation conducted throughout the world.


CLEVO[®]






With intelligent performance that accelerates in response to demanding tasks, such as playing games and editing photos, the Intel® Core™ i7 third generation processor moves faster when you do.

The Intel® Core™ i7™ processor automatically allocates processing power where it's needed most. Whether you're creating HD video, composing digital music, editing photos or playing the coolest PC games — with the Intel® Core™ i7 processor you can multitask with ease and be more productive than ever.

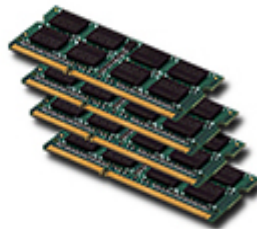
See :klit display (LED, Light-Emitting Diodes) ensures an even and uniform light across the screen. LED backlighting offers many advantages: low operating voltage, therefore low energy consumption and prolongs battery life, precise control of light intensity, longer than traditional displays of component life, finally – not less important – protecting the environment.

Wide  important feature. Wide Screen makes the display look bigger. The 16:9 aspect ratio is the most popular. Movie theaters and high end home televisions all display in 16:9 wide screen ratio just like these do. This has a backlit display for extra brightness. The monitor will look good during day or night. You can adjust all the color and picture settings (color, contrast, brightness, etc).

[go top...](#)

Enjoy a dramatic boost in multitasking performance with more system memory thanks to the quad SODIMM memory slots. With up to 32GB of Dual-Channel DDR3 memory, your system will never lag while multimedia editing, graphics design/3D modeling, and graphic-intensive gaming at once.

FOUR
DDR3
MEMORY
MODULES
CAPABLE



NVIDIA GeForce GTX 680M

The NVIDIA® GeForce® GTX 680M is the fastest, most advanced gaming notebook GPU ever built.



[mobilator.pl](#)

The NVIDIA GeForce GTX 680M leverages NVIDIA's revolutionary new architecture to deliver up to 60% more performance than the previous generation*. Built for speed and efficiency, the GeForce® GTX 680M GPU outpaces the competition by up to 30%*. Plus, NVIDIA GeForce™ drivers ensure that you're always getting the most out of your GPU for the ultimate gaming experience.



[go top...](#)



NVIDIA® CUDA™ technology unlocks the power of the GPU's processor cores to accelerate the performance for even the most demanding system tasks such as video transcoding. The HM lets you play games the way they're meant to be played without having to worry if your video card is up to the task.

NVIDIA® Optimus™ technology intelligently optimizes your notebook PC, providing the outstanding graphics performance you need, when you need it, all the while extending battery life for longer enjoyment.



[go top...](#)



NVIDIA® SLI™ intelligently scales graphics performance by combining multiple GeForce GPUs on an SLI™ certified motherboard. With over 1,000 supported applications and used by over 94% of multi-GPU PCs on Steam, SLI™ is the technology of choice for gamers who demand the very best.



NVIDIA® PureVideo® technology brings movies to life. PureVideo uses advanced techniques found only on very high-end consumer players and TVs to make Blu-ray, HD DVD, standard-definition DVD movies, PC and mobile device content look crisp, clear, smooth and vibrant.

[go top...](#)

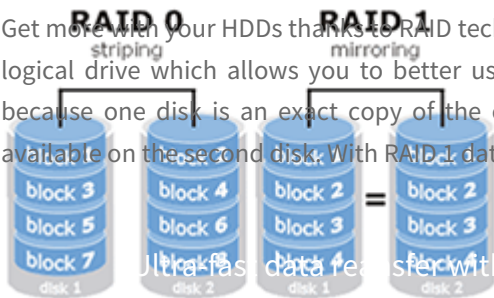
SSD DRIVES

Inside the laptop are two disk made in Flash SSD (Solid State Disc) technology. This means that they has no moving parts inside. Disk reads and writes data 2 times faster than standard 2,5" disks. In addition, it does not heat up at all, consuming little energy and discharge CPU up to 10%. Computer witch SSD drives runs much faster.

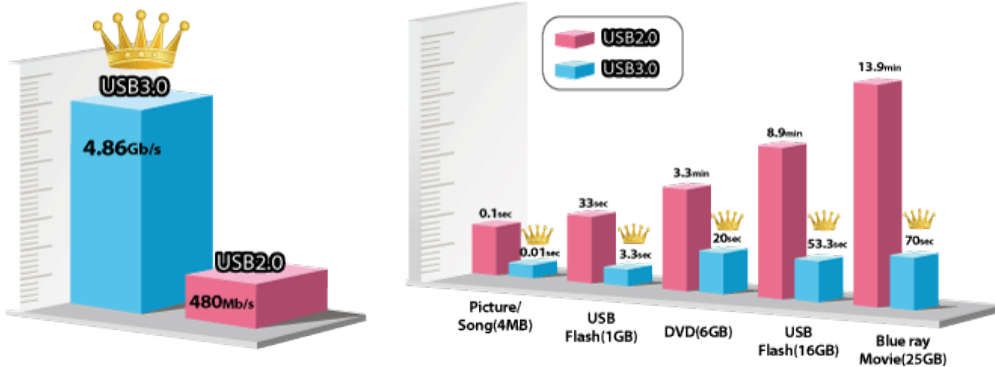
Laptop is also equipped with third ultra-fast SSD disk using mSATA connector. In addition, to the computer can be connected another devices via an external eSATA connector.



Get more with your HDDs thanks to RAID technology. RAID 0 joins physical drives into a single logical drive which allows you to better use of space. With RAID 1 your data will be safer because one disk is an exact copy of the other. Even if one disk fail all data will still be available on the second disk. With RAID 1 data reading accelerates almost twice.



The CLEVO P370EM is equipped with the latest USB 3.0 technology that can deliver transfer speed up to 10 times faster than USB 2.0. This allows faster transfer of HD content. USB charging is also faster - port provides a 900mA current, offering power saving features by switching to standby mode on unused devices, or turning them off.



[go top...](#)



Make your P370EM a stylish focal point with the full color programmable backlight keyboard. Choose from 7 instant effects or customize your own color combinations in 3 different keyboard sections with the Keyboard Backlight Application.

[go top...](#)



1. Kensington® Lock
2. RJ-45 LAN Port
3. 9-in-1 Card Reader
4. Line-in Jack

5. S/PDIF-Out Jack
6. Microphone-in Jack
7. Headphone-out Jack



- 1. Optical Device Bay
 - 2. eSATA Port (USB 2.0 Combo)
 - 3. USB 3.0 900mA
 - 4. USB 3.0 Ports
-



- 1. GPU Cooling Vents
 - 2. HDMI 1.4a Output Jack
 - 3. VESA Display Port
 - 4. DC-In Jack
 - 5. CPU Cooling Vents
 - 6. USB 3.0 Port
-



- 1. Hard Drives Compartment
 - 2. Battery Pack
 - 3. LED Status Indicator
-



- 1. 2.0Mpx video camera
- 2. Onkyo speakers
- 3. Illuminated keyboard
- 6. Fingerprint reader

3. LED status indicators

7. Touchpad

4. Power button



1. GPU cooling fans

2. CPU cooling fan

3. Subwoofer

4. Battery release Latch

5. Battery lock

6. Battery pack

7. CPU, GPU, RAM, mSATA, WiFi

8. Hard drives

[go top...](#)

Clevo P370EM is richly equipped with various kinds of I/O Connectors:

4 x USB 3.0 (1 x 900mA USB)

1 x eSATA (USB 2.0 combo)

1 x Display port

1 x HDMI™ out (with HDCP)

1 x Headphone jack

1 x Microphone jack

1 x S/PDIF output jack

1 x Line-in jack

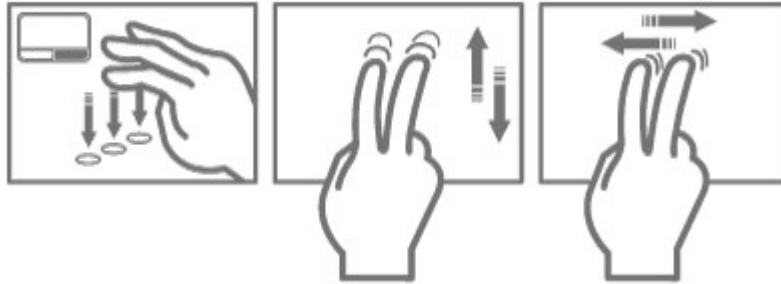
1 x RJ-45 LAN port

1 x DC-in jack





The integrated multi-gesture touchpad on the notebook allows user to perform various operations by tapping multiple fingers and making gestures. When using a computer touchpad can accurately detect multi-finger movements. Using touchpad is not only effective but also enjoyable.



No Bluetooth connections! Thanks to the bluetooth® 3.0 technology that allows the exchange of information among different devices, you can easily use all the accessories of the Clevo line (and more) with an in-built special software. Bluetooth 3.0 is much more faster than previous versions of this interface.



Technologies to wireless connect to the Internet both in professional and domestic settings through the public or private hot-spots, make your Clevo inseparable resource for your daily activities. New "n" standard provides great transfer up to 150Mbit/s. This feature allows you to download and upload data in short period of time.



Enable communication and take advantage of the built-in video camera to participate in a video conference or simply chat with your friends face-to-face no matter how far apart you may be. Thanks to the 2.0 megapixel high-resolution camera, your video will have never looked so real.



CLEVO P370 takes mobile entertainment to the next level! The fastest notebook with 17.3" screen made until now. P370EM offers newest third generation Intel Core i7 mobile processors and one of the best nVidia GeForce graphic card - GTX 680M.

CLEVO[®]
P370EM

