



Notebook - Clevo W230ST v.0.3

<b>Category:</b>	CLEVO Powerful Notebooks
<b>Manufacturer:</b>	Clevo
<b>WAN:</b>	-----
<b>WLAN:</b>	Wireless LAN 802.11B/G/N + Bluetooth v4.0+LE Combo Half Mini Card module
<b>Bluetooth:</b>	Yes - 4.0
<b>Processor:</b>	<b>Intel® Core™ i3-4000M Processor (3M Cache, 2.40 GHz)</b>
<b>Memory:</b>	none (available in other configurations)
<b>Chipset:</b>	Mobile Intel® HM87 Express Chipset
<b>Display:</b>	13.3" (33.78cm) FHD (1920x1080) 16:9 panel, 2.8mm (Anti-Glare)
<b>Graphics card:</b>	<b>nVidia GTX-765M (N14E-GE) 2GB DDR5</b>
<b>Touch screen:</b>	No
<b>Swivel Hinge:</b>	No
<b>Hard Drive:</b>	none (available in other configurations)
<b>BIOS:</b>	-----
<b>VGA out:</b>	Yes - HDMI, VGA
<b>LAN:</b>	10/100/1000MB Base - TX Ethernet LAN
<b>Camera:</b>	Yes - 2M HD Video Camera

<b>Audio:</b>	High Definition Audio / Built in microphone / Built in two speakers / SOUND BLASTER Cinema
<b>Security:</b>	Kensington® Lock
<b>TV Out:</b>	-----
<b>In/Out:</b>	1x USB 2.0 port / 3x USB 3.0 ports(1x powered USB port, AC/DC) / 1x HDMITM output port (with HDCP) / 1x external VGA port / 1x Headphone jack / 1x Microphone jack / 1x RJ-45 LAN port / 1x DC-in jack
<b>Keyboard:</b>	QWERTY - function keys, illuminated
<b>Additional Navigation Devices :</b>	Touch pad with scrolling function
<b>Battery:</b>	Removable 6 cells Smart Lithium-Ion battery pack, 62.16WH
<b>Working time on battery:</b>	300 minutes
<b>Size:</b>	330 (W) x 227 (D) x 31.9 (H) mm - 2.0kg, including 62.16WH battery
<b>CD/DVD:</b>	No
<b>Operating System:</b>	No
<b>Flash Card Reader:</b>	Yes - 6-in-1 Push-Push Card reader (MMC / RSMHC / SD / Mini SD / SDHC / SDXC)
<b>GPS:</b>	-----
<b>TV Tuner:</b>	-----
<b>Color:</b>	-----
<b>Other:</b>	Warranty 24 months

**Product from the Archive - production finished**







Founded in 1983, the company has achieved an excellent reputation Clevo as a manufacturer of notebook computers. Due to the high position of the products in the high-tech has won many awards in tests conducted around the world.



### Mobility without compromise

Slight size and minimal weight makes the Clevo W230ST highly portable netbook, which is applicable in all cases. Thorough study of all the ergonomic aspects, the keyboard dimensions and position of the main control keys allow a very simple use of a laptop. Upgrading the fourth generation of processors Intel® i7 processor and Nvidia graphics GTX-765M made W230ST is currently the best laptop in the world in this segment.





## Fourth generation Intel® Core™ i7

Intel Core 4th generation, the engineers placed emphasis on optimal power management. Less energy means good things - longer battery life and thinner casing.

Model	C/T	Frequency	Max. Frequency	L3 cache	Max. GPU	TDP
i3-4000MQ	2 / 4	2.4 GHz	2.4 GHz	3 MB	1.1 GHz	37 Wat
i7-4700MQ	4 / 8	2.4 GHz	3.4 GHz	6 MB	1.15 GHz	47 Wat
i7-4800MQ	4 / 8	2.7 GHz	3.7 GHz	6 MB	1.3 GHz	47 Wat
i7-4900MQ	4 / 8	2.8 GHz	3.8 GHz	8 MB	1.3 GHz	47 Wat



[go top . . .](#)



## A new generation of NVIDIA® GeForce® GTX

NVIDIA GeForce® GTX 765M graphics chip is designed for laptops based on the award-winning architecture of NVIDIA® Kepler™. The system has more clocks and cores than ever before, thanks to crush the competition in every respect. Graphics card has a core frequency of 850 MHz Boost technology 2.0 and GDDR5 memory with a capacity of 2GB.

	<b>NVIDIA GeForce GTX 765M</b>
Codename	N14-GE
Cores	768
Clock	850 MHz
Memory	2048 MB GDDR5
Memory Speed	1000 MHz

[go top...](#)

## Flexible storage

W230ST can support a total of three disks at the same time. This makes it possible to easily expand without having to move data from the old disk to the new one. Clevo Notebook W230ST to mount two mSATA drive on which you can install the system and most used applications. The use of RAID brings powerful performance increase (read data at 1GB / s).



### RAID 0

striping

### RAID 1

mirroring

RAID 0 allows you to hook up physical drives into a single logical which allows for better use of space. With RAID 1, your data will be safer because a disk is an exact copy of the other. If one drive fails all data is still available on the other. RAID 1 is almost twice as fast as reading data from the disk.



[go top...](#)

## Advanced illumination

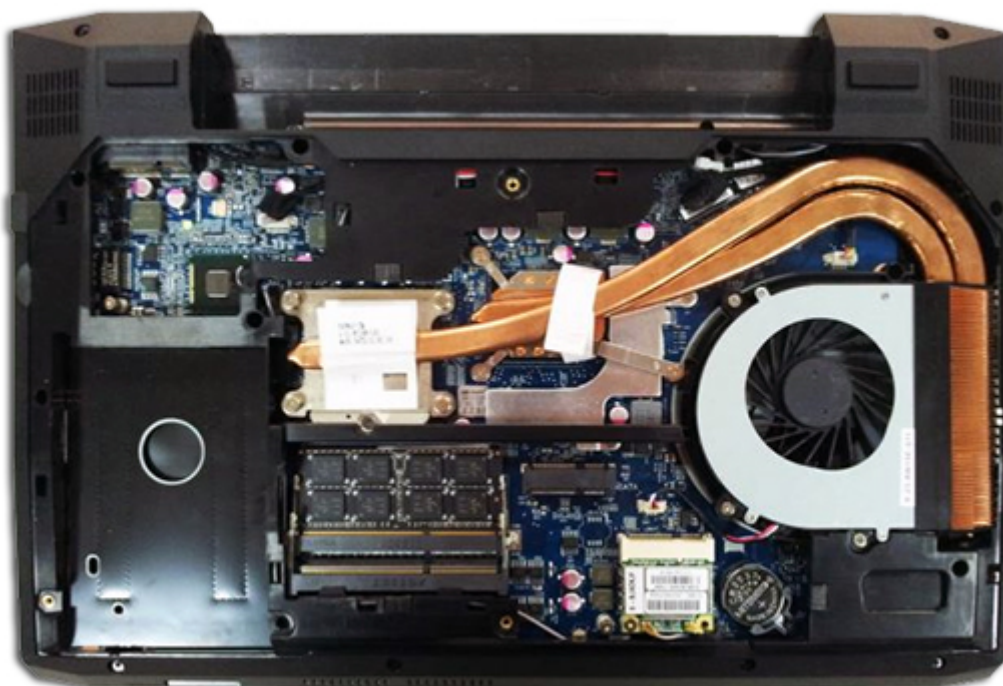
The keyboard backlight LED is a feature that not only beautifies Clevo W230ST, but also makes it easier to write when the light in the environment is weak. The color and intensity of illumination can be adjusted to your needs. Highlighting three-zone which allows for the keyboard backlight in areas that are in use, and put it out there where it is unnecessary for example, the numeric keypad.



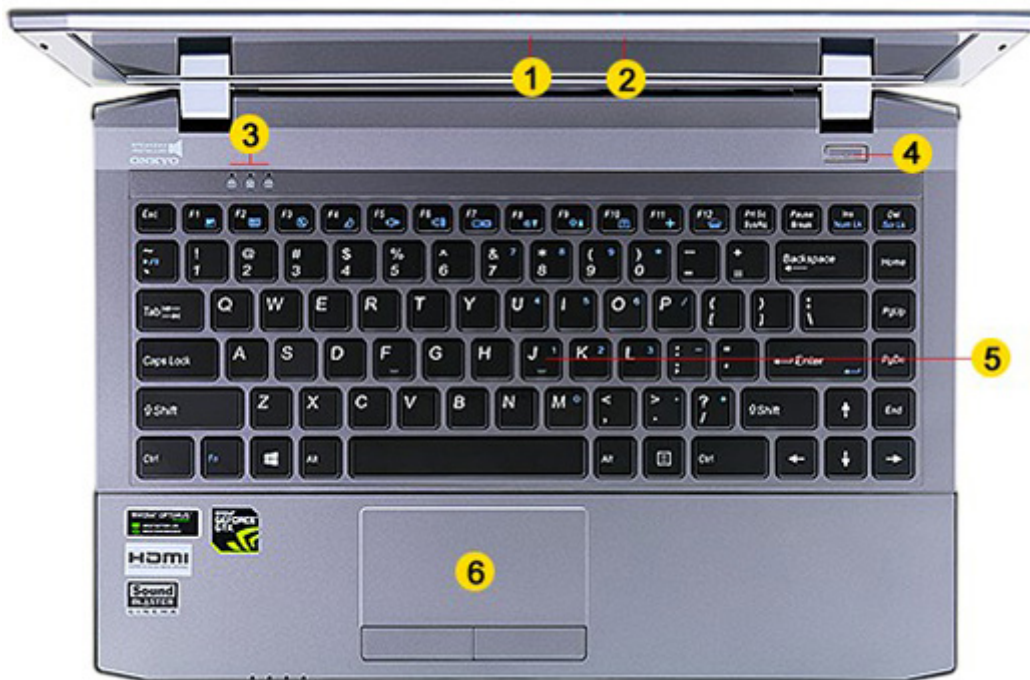
[go top...](#)

## Powerful storage capacity

Performance of your computer will never again let you down by technology, dual-channel RAM. Sharing channels reduces data latency and increase memory bandwidth to satisfy most storage-hungry applications. With up to 16GB of system memory always cope with the number of assigned tasks in parallel. The manufacturer can install two memory modules SODIMM DDR3/DDR3L.



[go top...](#)



- 1. [2.0M HD Video Camera](#)
- 2. [Built-in Microphone](#)
- 3. [LED Status Indicators](#)

- 4. [Power Button](#)
- 5. [Backlit Keyboard](#)
- 6. [Touchpad with Scroll Slider](#)



- 1. [Onkyo Speakers](#)
- 2. [Battery Pack \(6 cell\)](#)
- 3. [Battery Lock](#)

- 4. [Battery Release Latch](#)
- 5. [CPU & GPU Cooling Fan](#)
- 6. [CPU, GPU, Pamięć, Dysk, WiFi, mSata](#)



1. 3x USB 3.0

2. HDMI 1.4a Output Jack

3. DB15 VGA Output Jack

4. RJ-45 LAN Port (Gigabit)

5. DC-In Jack

4. Kensington Lock



1. CPU & GPU Vents

2. USB 2.0 Port

5. Headphone - Out Jack

6. Microphone - In Jack



1. Hard Drive, Airplane mode, Power and Battery Charge Status Indicators

2. Card Reader 6-in-1



more photos in "[Gallery](#)"...

**specification** of this version is available in the "[Specifications](#)"...