



## Linux



Polywell-H310AEL2 i7 v.1 - Industrial MiniPC for controlling industrial processes with a modern Intel Core i7 (8x2.0GHz) processor, large amount of RAM (16GB) and SSD



<b>Category:</b>	MiniPC Industry
<b>Manufacturer:</b>	Polywell
<b>Supported OS:</b>	Linux   Windows 10
<b>Installed OS:</b>	<b>Linux</b>
<b>Chipset:</b>	Intel Chipset
<b>CPU Support:</b>	Intel Pentium   Celeron   i3   i5   i7
<b>Installed CPU:</b>	<b>Intel Core i7-9700T 8x2.0GHz</b>
<b>Graphic Card:</b>	Intel HD Graphics
<b>Memory Support:</b>	DDR4 (max.16GB)
<b>Installed Memory:</b>	<b>16GB DDR4</b>
<b>Storage (HDD) Support:</b>	SSD
<b>Installed Storage (HDD):</b>	<b>240GB SSD</b>
<b>IP Norm:</b>	-----
<b>Temp:</b>	-5°C do 55°C
<b>Storage temperature:</b>	-20°C do 70°C
<b>Humidity:</b>	8% ~ 90%
<b>Others:</b>	Color Black
<b>LAN:</b>	Intel I211 Gigabit (10/100/1000 Mb/s)
<b>Wireless LAN card:</b>	2230
<b>3G:</b>	-----
<b>Bluetooth:</b>	No

<b>Rear Panel (ports):</b>	1x HDMI   1x DP   2x USB 3.0   4x USB 2.0   2x LAN   1x 3.5mm Audio Jack
<b>Front Panel (ports):</b>	2x USB 3.0
<b>Expansion:</b>	-----
<b>Power:</b>	12V
<b>Watch Dog Timer:</b>	No
<b>CD/DVD Drive:</b>	-----
<b>TV Tuner:</b>	-----
<b>Dimensions:</b>	177,8 x 182.8 x 35 mm
<b>Fanless:</b>	Yes
<b>Weight:</b>	1360g

**3 708,45 zł**  
net price: 3 015,00 zł



**Linux**



## TECHNICAL SPECIFICATION

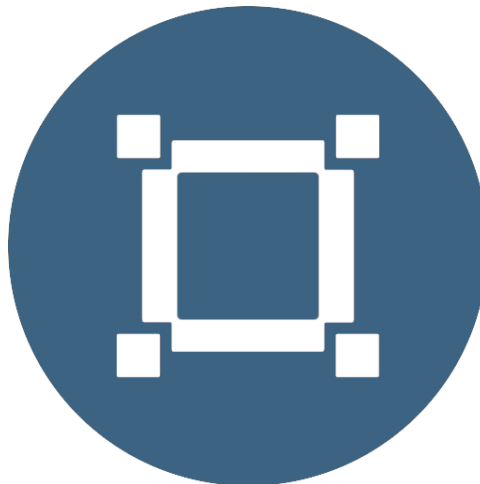
RESISTANCE AND DURABILITY

CONNECTIVITY AND COMMUNICATION

DEVICE APPLICATION

AVAILABLE VERSIONS

Small dimensions industrial computers excel in environments where dust, dirt and moisture predominate. They are ideal for applications requiring quiet operation. Small and reliable MiniPC use heat-pipe technology and aluminum fins for passive cooling. The robust mini Industrial Computer Polywell-H310AEL2 i7 is a device designed for all industrial and non-continuous applications requiring continuous operation - 24 hours, 7 days a week.



### Small dimensions

The compact housing means that the Mini PC will fit wherever you need it and is easy to carry.



### Lightweight design

The computer's weight does not exceed 1.36 kg, so it can be conveniently carried in a bag or backpack.



### Efficient components

The Intel Core i7-9700T octa-core CPU provides improved device performance.



### Wireless network

\*

The mini PC can be connected to nearby wireless networks by equipping it with an optional Wi-Fi module.



### Quick start

A modern SSD drive will increase the speed of application programs and ensure quiet computer operation.



### Passive cooling

The use of passive cooling in the Mini PC ensures silent operation and slows dust deposition.

\* Optional equipment, available only in other versions of the device.

## SPECIFICATION

Polywell-H310AEL2 i7	
Processor	Intel Core i7-9700T 8x2.0GHz
Operation system	Linux
RAM	16GB DDR4
Drive	240GB SSD
Graphic card	Intel UHD 630 Graphics, 4K Resolution, HDR 10Bit color
Connectivity	WLAN: 1x M.2 2230 socket (Taken by WiFi+BT Module) LAN: 2 x Intel I211 Gigabit (10/100/1000 Mb/s)
Front panel	2x USB 3.0
Rear panel	1x HDMI   1x DP   2x USB 3.0   4x USB 2.0   2x LAN 1x 3.5mm Audio Jack
Audio	Realtek ALC662 6-channel (5.1)

Polywell-H310AEL2 i7	
Available colors	Black
Dimensions	177,8 x 182.8 x 35 mm
Weight	1.36 kg



Detailed device specification is available in the "Technical data".

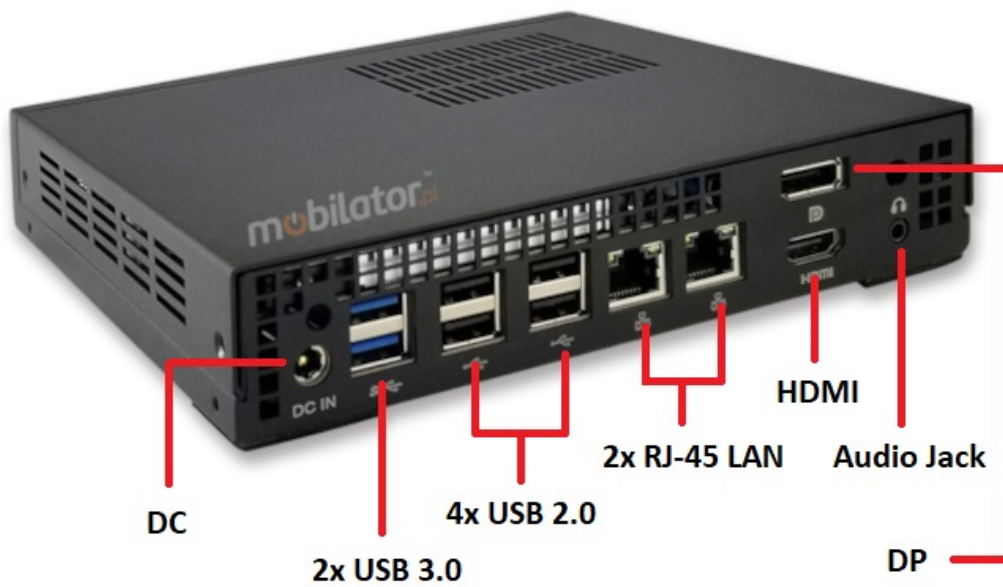
### Efficient processor



The industrial mini-computer

Polywell-H310AEL2 i7 uses an efficient and energy-saving Intel Core i7-9700T processor. Inside it there are six cooperating cores enabling more efficient processing of many tasks at the same time. The shared cache memory in which the multilevel hierarchy is used is dynamically allocated to each processor core depending on the load. This reduces the average access time to the main memory.

### Interfaces



**\*Illustrative images, Connectors:** 2x USB 3.0 | 1xPower | 2xUSB 3.0 | 4xUSB 2.0 | 2x RJ-45 LAN | 1x HDMI | 1x DP | 1x Audio jack | DC 12V

## Dimensions



Thanks to the small dimensions of the MiniPC, the is versatile for use at home, in the office and in the industry, for example in the production hall. It's literally everywhere, and thanks to the VESA mount it can be mounted on the back of the monitor to optimize the job.

<b>Dimensions</b>	177,8 x 182.8 x 35 mm
<b>Weight</b>	1360g

Passive cooling

The industrial Mini PC uses a proven cooling system, based only on solid elements, mainly heat sinks. The system uses the phenomenon of metals passing thermal energy into the environment - there are no additional moving elements in the form of eg fans. This solution ensures noiseless operation, lower failure rate and greater protection against dust and other dirt while reducing the amount of energy consumed.

## RESISTANCE AND DURABILITY



### Temperatures

Polywell-H310AEL2 i7  
 is designed for continuous operation in both very low and high temperatures ranging from -5°C to 55°C. If the device is switched off, it can already handle temperatures in the range of -20°C to 70°C.

<b>Work temp.</b>	-5°C to 55°C
<b>Storage temp.</b>	-20°C to 70°C
<b>Work Humidity</b>	5% to 95%
<b>Storage Humidity</b>	5% to 95%

### Mechanical damage

The passive cooling system used in the MiniPC Polywell-H310AEL2 i7 combined with the non-disk SSD make this computer very resistant to various types of mechanical injuries. An additional advantage of industrial computers is a solid construction made of high quality aluminum and specially designed in such a way that in addition to high efficiency in heat dissipation, it can also resist any external damage.

## CONNECTIVITY AND COMMUNICATION

### Wired LAN Network

The Polywell-H310AEL2 MiniPC i7 has built-in 2x Intel I211 network adapter that can work in a fast Gigabit Ethernet network.



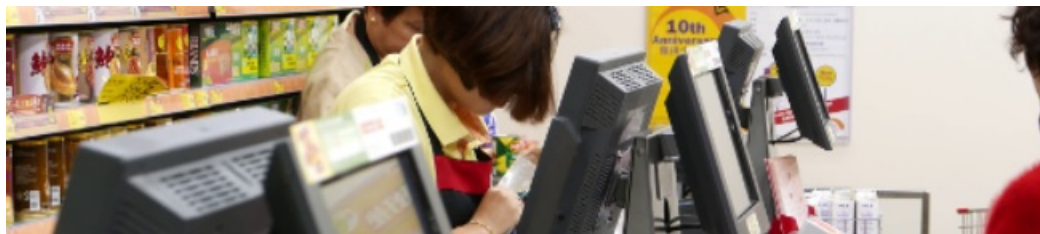
## DEVICE APPLICATION

### Trade and service

Mini PC is an ideal tool to support us in the implementation of many activities

in the field of trade, small dimensions increase the possibility of its adaptation to activities such as issuing invoices or preparing documentation, which in turn allows us to convenient and optimal sales management. The VESA holder mounted to the housing provides many installation options, eg in stores (at the cash register, under the desktop, behind the LCD / LED monitor), in factory halls or in a delivery truck.

VESA



### Warehouse and logistics

Thanks high performance an industrial computer can be used to connect multiple devices in a warehouse and make their management much easier. Its rugged casing and the fanless cooling system are ideal for harsh environments in such rooms. The solid construction guarantees long-lasting work, even in environments with high dustiness and dirt.



## Transport and motorization

A small industrial computer can be used in transport thanks to the ability to work on 12V power supply. Then the mini computer can be used in passenger cars, buses, trams, taxis, trains and even in airplanes. It allows you to inform the driver about the current state of the vehicle, transfer its current location to the management center, display information for passengers, etc. It performs well in vehicles where small dimensions are important.



More photos in full resolution available in the "Gallery".

## AVAILABLE VERSIONS

The industrial mini-computer Polywell-H310AEL2 is offered in several versions to suit different needs. By clicking on the number of the hardware configuration you will be redirected to the product with the parameters given in the table below.