



Linux



Polywell-H310AEL2 Pentium v.1 - Powerful industrial computer with Linux system, 2x LAN, 2x USB 3.0, 4x USB 2.0, 120GB SSD



Category:	MiniPC Industry
Manufacturer:	Polywell
Supported OS:	Linux Windows 10
Installed OS:	Linux
Chipset:	Intel Chipset
CPU Support:	Intel Pentium Celeron i3 i5 i7
Installed CPU:	Intel Pentium Gold G5600 2x3.90GHz
Graphic Card:	Intel HD Graphics
Memory Support:	DDR4 (max.16GB)
Installed Memory:	4GB DDR4
Storage (HDD) Support:	SSD
Installed Storage (HDD):	120GB SSD
IP Norm:	-----
Temp:	-5°C do 55°C
Storage temperature:	-20°C do 70°C
Humidity:	8% ~ 90%
Others:	Color Black

LAN:	Intel I211 Gigabit (10/100/1000 Mb/s)
Wireless LAN card:	2230
3G:	-----
Bluetooth:	No
Rear Panel (ports):	1x HDMI 1x DP 2x USB 3.0 4x USB 2.0 2x LAN 1x 3.5mm Audio Jack
Front Panel (ports):	2x USB 3.0
Expansion:	-----
Power:	12V
Watch Dog Timer:	No
CD/DVD Drive:	-----
TV Tuner:	-----
Dimensions:	177,8 x 182.8 x 35 mm
Fanless:	Yes
Weight:	1360g

2 167,88 zł

net price: 1 762,50 zł



Linux



TECHNICAL SPECIFICATION

RESISTANCE AND DURABILITY

CONNECTIVITY AND COMMUNICATION

DEVICE APPLICATION

AVAILABLE VERSIONS

Small dimensions industrial computers excel in environments where dust, dirt and moisture predominate. They are ideal for applications requiring quiet operation. Small and reliable MiniPC use heat-pipe technology and aluminum fins for passive cooling. The robust mini Industrial Computer Polywell-H310AEL2 Pentium is a device designed for all industrial and non-continuous

applications requiring continuous operation - 24 hours, 7 days a week.



Small dimensions

The compact housing means that the Mini PC will fit wherever you need it and is easy to carry.



Lightweight design

The computer's weight does not exceed 1.36 kg, so it can be conveniently carried in a bag or backpack.



Efficient components

The Intel Pentium Gold
G5600

dual-core CPU provides
improved device
performance.



Wireless network

*

The mini PC can be
connected to nearby
wireless networks by
equipping it with an
optional Wi-Fi module.



Quick start

A modern SSD drive will increase the speed of application programs and ensure quiet computer operation.



Passive cooling

The use of passive cooling in the Mini PC ensures silent operation and slows dust deposition.

* Optional equipment, available only in other versions of the device.

SPECIFICATION

Polywell-H310AEL2 Pentium

Processor	Intel Pentium Gold G5600 2x3.90GHz
Operation system	Linux
RAM	4GB DDR4
Drive	120GB SSD
Graphic card	Intel UHD 630 Graphics, 4K Resolution, HDR 10Bit color
Connectivity	WLAN: 1x M.2 2230 socket (Taken by WiFi+BT Module) LAN: 2 x Intel I211 Gigabit (10/100/1000 Mb/s)
Front panel	2x USB 3.0
Rear panel	1x HDMI 1x DP 2x USB 3.0 4x USB 2.0 2x LAN 1x 3.5mm Audio Jack
Audio	Realtek ALC662 6-channel (5.1)
Available colors	Black
Dimensions	177,8 x 182.8 x 35 mm
Weight	1.36 kg



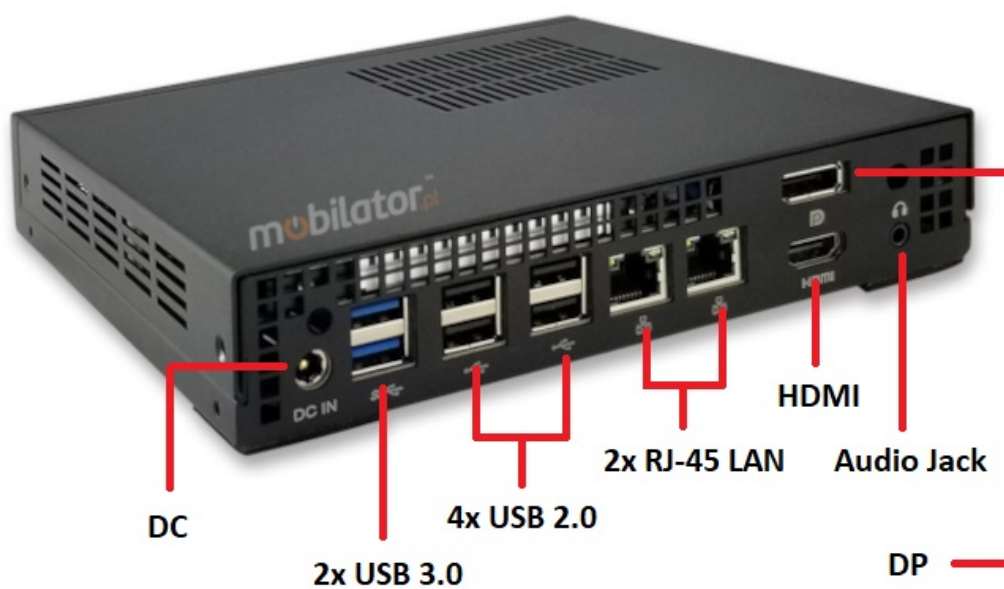
Detailed device specification is available in the "Technical data".

Efficient processor



The industrial mini-computer Polywell-H310AEL2 Pentium uses an efficient and energy-saving Intel Pentium Gold G5600 processor. Inside it there are two cooperating cores enabling more efficient processing of many tasks at the same time. The shared cache memory in which the multilevel hierarchy is used is dynamically allocated to each processor core depending on the load. This reduces the average access time to the main memory.

Interfaces



***Illustrative images, Connectors:** 2x USB 3.0 | 1xPower | 2xUSB 3.0 | 4xUSB 2.0 |
2x RJ-45 LAN | 1x HDMI | 1x DP | 1x Audio jack | DC 12V

Dimensions



Thanks to the small dimensions of the MiniPC, the is versatile for use at home, in the office and in the industry, for example in the production hall. It's literally everywhere, and thanks to the VESA mount it can be mounted on the back of the monitor to optimize the job.

Dimensions	177,8 x 182.8 x 35 mm
Weight	1360g

Passive cooling

The industrial Mini PC uses a proven cooling system, based only on solid elements, mainly heat sinks. The system uses the phenomenon of metals passing thermal energy into the environment - there are no additional moving elements in the form of eg fans. This solution ensures noiseless operation, lower failure rate and greater protection against dust and other dirt while reducing the amount of energy consumed.

RESISTANCE AND DURABILITY



Temperatures

Polywell-H310AEL2 Pentium is designed for continuous operation in both very low and high temperatures ranging from -5°C to 55°C. If the device is switched off, it can already handle temperatures in the range of -20°C to 70°C.

Work temp.	-5°C to 55°C
Storage temp.	-20°C to 70°C
Work Humidity	5% to 95%
Storage Humidity	5% to 95%

Mechanical damage

The passive cooling system used in the MiniPC Polywell-H310AEL2 Pentium combined with the non-disk SSD make this computer very resistant to various types of mechanical injuries. An

additional advantage of industrial computers is a solid construction made of high quality aluminum and specially designed in such a way that in addition to high efficiency in heat dissipation, it can also resist any external damage.

CONNECTIVITY AND COMMUNICATION

Wired LAN Network

The MiniPC Polywell-H310AEL2 Pentium has built-in 2x Intel I211 network adapter that can work in a fast Gigabit Ethernet network.

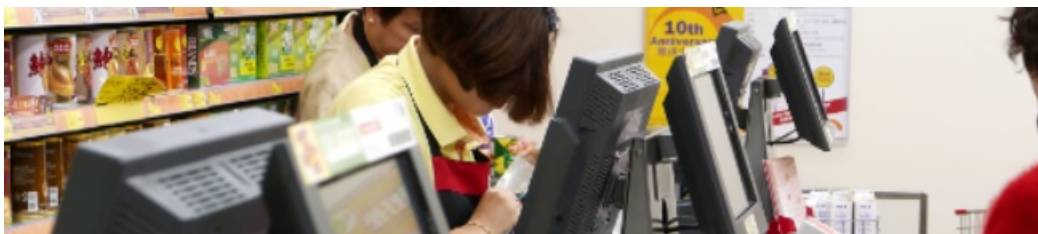


DEVICE APPLICATION

Trade and service

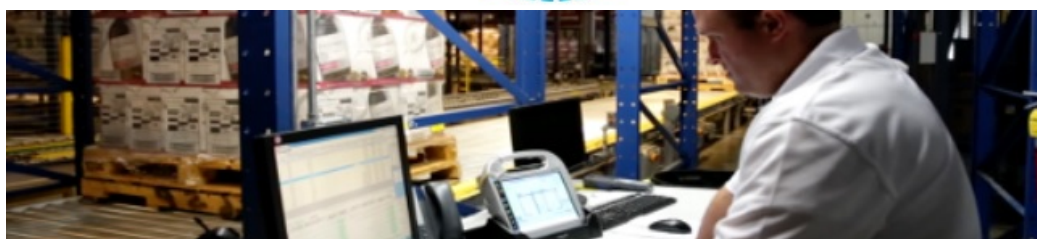
Mini PC is an ideal tool to support us in the implementation of many activities in the field of trade, small dimensions increase the possibility of its adaptation to activities such as issuing invoices or preparing documentation, which in turn allows us to convenient and optimal sales management. The VESA holder mounted to the housing provides many installation options, eg in stores (at the cash register, under the desktop, behind the LCD / LED monitor), in factory halls or in a delivery truck.

VESA



Warehouse and logistics

Thanks high performance an industrial computer can be used to connect multiple devices in a warehouse and make their management much easier. Its rugged casing and the fanless cooling system are ideal for harsh environments in such rooms. The solid construction guarantees long-lasting work, even in environments with high dustiness and dirt.



Transport and motorization

A small industrial computer can be used in transport thanks to the ability to work on 12V power supply. Then the mini computer can be used in passenger cars, buses, trams, taxis, trains and even in airplanes. It allows you to inform the driver about the current state of the vehicle, transfer its current location

to the management center, display information for passengers, etc. It performs well in vehicles where small dimensions are important.



More photos in full resolution available in the "Gallery".

AVAILABLE VERSIONS

The industrial mini-computer Polywell-H310AEL2 is offered in several versions to suit different needs. By clicking on the number of the hardware configuration you will be redirected to the product with the parameters given in the table below.