



Linux



Polywell-HM170L4 i7 v.1 - Rugged industrial miniPC computer with efficient i7 processor, 16GB RAM and four LAN ports,

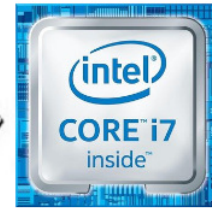


Category:	MiniPC Industry
Manufacturer:	Polywell
Supported OS:	Linux Windows 10
Installed OS:	-----
Chipset:	Intel Chipset
CPU Support:	Intel Celeron
Installed CPU:	Intel Pentium Silver J5040 4x2.00GHz
Graphic Card:	Intel UHD 600 Graphics
Memory Support:	DDR4
Installed Memory:	4GB DDR4 RAM
Storage (HDD) Support:	eMMC SSD
Installed Storage (HDD):	64GB eMMC
IP Norm:	-----
Temp:	0°C do 55°C
Storage temperature:	-20°C do 70°C
Humidity:	8% ~ 90%
Others:	Color Black
LAN:	1x Realtek® RTL8111H Gigabit (10/100/1000 Mb/s) LAN 1x Intel® I211 Gigabit (10/100/1000 Mb/s) LAN

Wireless LAN card:	-----
3G:	-----
Bluetooth:	No
Rear Panel (ports):	1x HDMI 2.0 1x DP 1.2 2x USB 3.0 2x LAN 2x 3.5mm Audio jack
Front Panel (ports):	1x USB 2.0
Expansion:	-----
Power:	12V
Watch Dog Timer:	No
CD/DVD Drive:	-----
TV Tuner:	-----
Dimensions:	177,8 x 182.8 x 35 mm
Fanless:	Yes
Weight:	1360g

3 892,95 zł
net price: 3 165,00 zł

Fi5



TECHNICAL SPECIFICATION

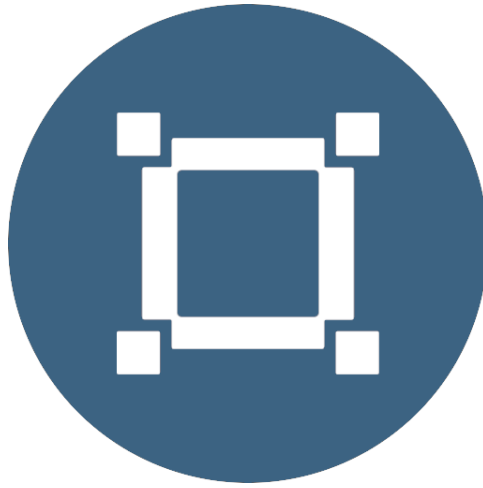
RESISTANCE AND DURABILITY

CONNECTIVITY AND COMMUNICATION

DEVICE APPLICATION

AVAILABLE VERSIONS

Small dimensions industrial computers excel in environments where dust, dirt and moisture predominate. They are ideal for applications requiring quiet operation. Small and reliable MiniPC use heat-pipe technology and aluminum fins for passive cooling. The robust mini Industrial Computer Polywell HM170L4 i7 is a device designed for all industrial and non-continuous applications requiring continuous operation - 24 hours, 7 days a week.



Small dimensions

The compact housing means that the Mini PC will fit wherever you need it and is easy to carry.



Lightweight design

The computer's weight does not exceed 1.36 kg, so it can be conveniently carried in a bag or backpack.



Efficient components

The Polywell HM170L4 intel core i7 processor consists of four cores, which ensure improved device performance.



Wireless network

*

The mini PC can be connected to nearby wireless networks by equipping it with an optional Wi-Fi module.



Quick start

*

A modern SSD drive will increase the speed of application programs and ensure quiet computer operation.



Passive cooling

The use of passive cooling in the Mini PC ensures silent operation and slows dust deposition.

* Optional equipment, available only in other versions of the device.

SPECIFICATION

Polywell HM170L4 i7	
Processor	Intel Core i7-6700HQ 4x2.60GHz
Operation system	Linux
RAM	16GB DDR4 RAM
Drive	240GB SSD
Graphic card	HD 530 Graphics, 4K Resolution
Connectivity	4 x RJ45 Realtek Gigabit (10/100/1000 Mb/s) LAN
Rear panel	1 x HDMI 1 x DP 1 x VGA 2 x USB 3.0 ; 2 x USB 2.0 4 x LAN 1 x 3.5mm Audio jack
Audio	Realtek® ALC661 6-channel (5.1)
Available colors	Black
Dimensions	178 x 183 x 36 mm
Weight	1.36 kg



Detailed device specification is available in the "Technical data".

Efficient processor

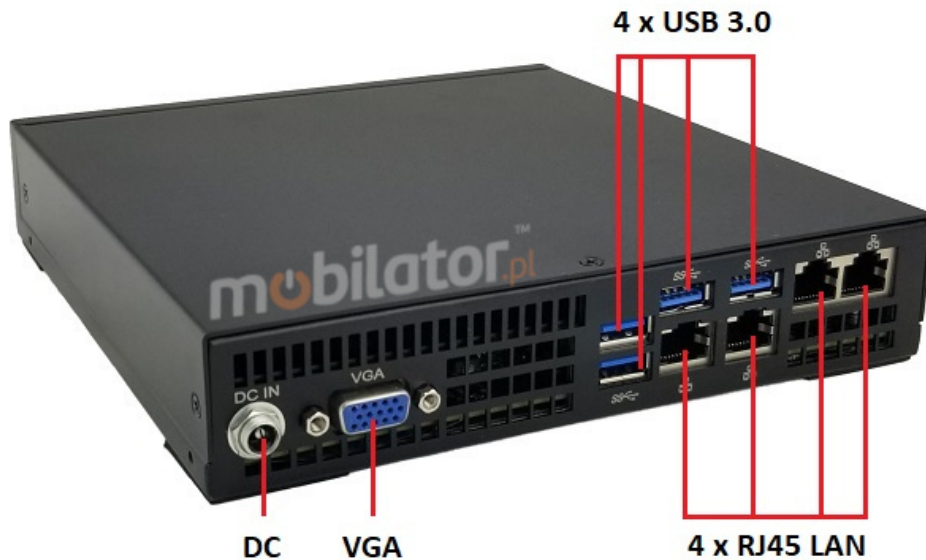


The industrial mini-computer Polywell HM170L4 i7 uses an efficient and energy-saving Intel Core i7 processor. Inside it there are four cooperating cores enabling more efficient processing of many tasks at the same time. The shared cache memory in which the multilevel hierarchy is used is dynamically allocated to each processor core depending on the load. This reduces the average access time to the main memory.

Interfaces



Power button



*Illustrative images. Connectors: 1 x HDMI | 1 x DP | 1 x VGA | 2 x USB 3.0 | 2 x USB 2.0 | 4 x LAN | 1 x 3.5mm audio jack | DC 12V

Dimensions



Thanks to the small dimensions of the MiniPC, the is versatile for use at home, in the office and in the industry, for example in the production hall. It's literally everywhere, and thanks to the VESA mount it can be mounted on the back of the monitor to optimize the job.

Dimensions

178 x 183 x 36 mm

Weight

1360 g

Passive cooling

The industrial Mini PC uses a proven cooling system, based only on solid elements, mainly heat sinks. The system uses the phenomenon of metals passing thermal energy into the environment - there are no additional moving elements in the form of eg fans. This solution ensures noiseless operation, lower failure rate and greater protection against dust and other dirt while reducing the amount of energy consumed.

RESISTANCE AND DURABILITY



Temperatures

Polywell

HM170L4

i7

is designed for continuous operation in both very low and high temperatures ranging from 0°C to 55°C. If the device is switched off, it can already handle temperatures in the range of -20°C to 70°C.

Work temp.	0°C to 55°C
Storage temp.	-20°C to 70°C
Work Humidity	5% to 95%
Storage Humidity	5% to 95%

Mechanical damage

The passive cooling system used in the MiniPC Polywell HM170L4 i7 is combined with the disk SSD make this computer very resistant to various types of mechanical injuries. An additional advantage of industrial computers is a solid construction made of high quality aluminum and specially designed in such a way that in addition to high efficiency in heat dissipation, it can also resist any external damage.

CONNECTIVITY AND COMMUNICATION

Wired LAN Network

MiniPC Polywell HM170L4 i7 has four built-in network cards that work in a fast Gigabit Ethernet network: Realtek Gigabit (10/100/1000 Mb/s) LAN.

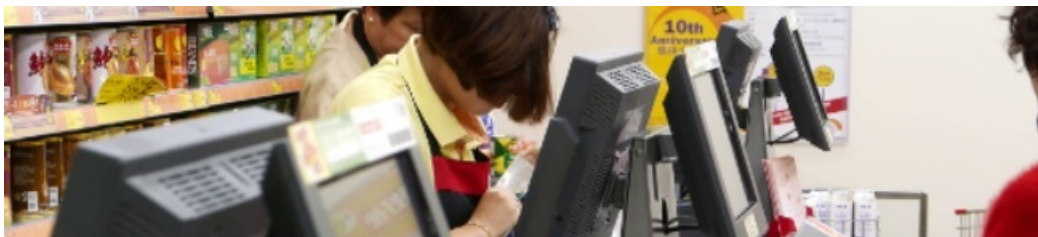


DEVICE APPLICATION

Trade and service

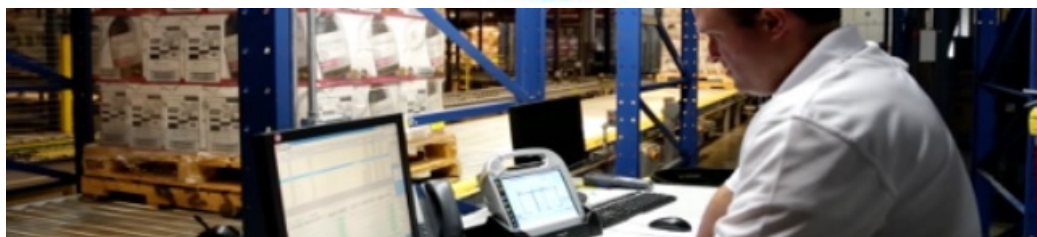
Mini PC is an ideal tool to support us in the implementation of many activities in the field of trade, small dimensions increase the possibility of its adaptation to activities such as issuing invoices or preparing documentation, which in turn allows us to convenient and optimal sales management. The VESA holder mounted to the housing provides many installation options, eg in stores (at the cash register, under the desktop, behind the LCD / LED monitor), in factory halls or in a delivery truck.

VESA



Warehouse and logistics

Thanks to high performance an industrial computer can be used to connect multiple devices in a warehouse and make their management much easier. Its rugged casing and the fanless cooling system are ideal for harsh environments in such rooms. The solid construction guarantees long-lasting work, even in environments with high dustiness and dirt.



Transport and motorization

A small industrial computer can be used in transport thanks to the ability to work on 12V power supply. Then the mini computer can be used in passenger cars, buses, trams, taxis, trains and even in airplanes. It allows you to inform the driver about the current state of the vehicle, transfer its current location to the management center, display information for passengers, etc. It performs well in vehicles where small dimensions are important.



More photos in full resolution available in the "Gallery".

AVAILABLE VERSIONS

The industrial mini-computer Polywell HM170L4
i7

is offered in several versions to suit different needs. By clicking on the number of the hardware configuration you will be redirected to the product with the parameters given in the table below.