



Polywell-J4125AEL2 Celeron v.2 - Fanless Industrial Mini PC with Intel Celeron Processor, Windows 10 Pro License, 64GB eMMC Disk



Category:	MiniPC Industry
Manufacturer:	Polywell
Supported OS:	Linux Windows 10
Installed OS:	Windows 10 Pro
Chipset:	Intel Chipset
CPU Support:	Intel Celeron
Installed CPU:	Intel Celeron J4125 4x2.00GHZ
Graphic Card:	Intel UHD 600 Graphics
Memory Support:	DDR4
Installed Memory:	4GB DDR4 RAM
Storage (HDD) Support:	eMMC SSD
Installed Storage (HDD):	64GB eMMC
IP Norm:	-----
Temp:	0°C do 55°C
Storage temperature:	-20°C do 70°C
Humidity:	8% ~ 90%
Others:	Color Black

LAN:	1x Realtek® RTL8111H Gigabit (10/100/1000 Mb/s) LAN 1x Intel® I211 Gigabit (10/100/1000 Mb/s) LAN
Wireless LAN card:	-----
3G:	-----
Bluetooth:	No
Rear Panel (ports):	1x HDMI 2.0 1x DP 1.2 2x USB 3.0 2x LAN 2x 3.5mm Audio jack
Front Panel (ports):	1x USB 2.0
Expansion:	-----
Power:	12V
Watch Dog Timer:	No
CD/DVD Drive:	-----
TV Tuner:	-----
Dimensions:	177,8 x 182.8 x 35 mm
Fanless:	Yes
Weight:	1360g

1 669,73 zł

net price: 1 357,50 zł



TECHNICAL SPECIFICATION

RESISTANCE AND DURABILITY

CONNECTIVITY AND COMMUNICATION

DEVICE APPLICATION

AVAILABLE VERSIONS

Small dimensions industrial computers excel in environments where dust, dirt and moisture predominate. They are ideal for applications requiring quiet operation. Small and reliable MiniPC use heat-pipe technology and aluminum fins for passive cooling. The robust mini Industrial Computer Polywell-J4125AEL2 Celeron is a device designed for all industrial and non-continuous

applications requiring continuous operation - 24 hours, 7 days a week.



Small dimensions

The compact housing means that the Mini PC will fit wherever you need it and is easy to carry.



Lightweight design

The computer's weight does not exceed 1.36 kg, so it can be conveniently carried in a bag or backpack.



Efficient components

The Intel Celeron J4125 quad-core CPU provides improved device performance.



Wireless network

*

The mini PC can be connected to nearby wireless networks by equipping it with an optional Wi-Fi module.



Quick start

*

A modern SSD drive will increase the speed of application programs and ensure quiet computer operation.



Passive cooling

The use of passive cooling in the Mini PC ensures silent operation and slows dust deposition.

* Optional equipment, available only in other versions of the device.

SPECIFICATION

Polywell-J4125AEL2 Celeron

Processor	Intel Celeron J4125 4x2.00GHz
Operation system	Windows 10 Pro
RAM	4GB DDR4 RAM
Drive	64GB eMMC
Graphic card	Intel UHD 600 Graphics
Connectivity	1x Realtek® RTL8111H Gigabit (10/100/1000 Mb/s) LAN 1x Intel® I211 Gigabit (10/100/1000 Mb/s) LAN
Front panel	1x USB 2.0
Rear panel	1x HDMI 2.0 1x DP 1.2 2x USB 3.0 2x LAN 2x 3.5mm Audio jack
Audio	Realtek ALC662 6-channel (5.1)
Available colors	Black
Dimensions	177,8 x 182.8 x 35 mm
Weight	1.36 kg



Detailed device specification is available in the "Technical data".

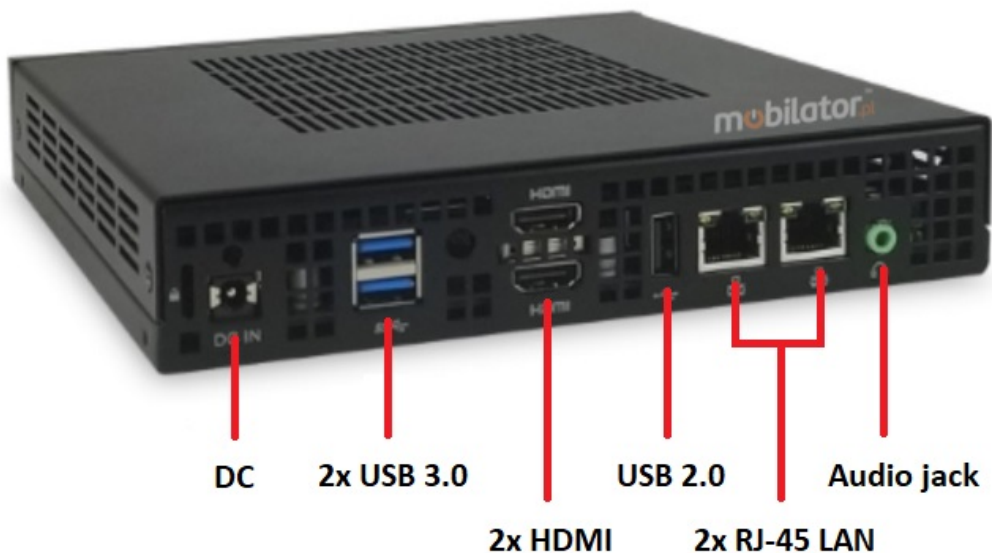
Efficient processor



The industrial mini-computer Polywell-J4125AEL2 Celeron uses an efficient and energy-saving Intel Celeron J4125 processor. Inside it there are four cooperating cores enabling more efficient processing of many tasks at the same time. The shared cache memory in which the multilevel hierarchy is used is dynamically allocated to each processor core depending on the load. This reduces the average access time to the main memory.

Interfaces





*Illustrative images, Connectors: 1x USB 2.0 | 1xPower | 2xUSB 3.0 | 2xHDMI |
1x USB 2.0 | 2x RJ-45 LAN | 1x Audio jack | DC 12V

Dimensions



Thanks to the small dimensions of the MiniPC, the is versatile for use at home, in the office and in the industry, for example in the production hall. It's literally everywhere, and thanks to the VESA mount it can be mounted on the back of the monitor to optimize the job.

Dimensions	177,8 x 182.8 x 35 mm
-------------------	-----------------------

Weight

1360g

Passive cooling

The industrial Mini PC uses a proven cooling system, based only on solid elements, mainly heat sinks. The system uses the phenomenon of metals passing thermal energy into the environment - there are no additional moving elements in the form of eg fans. This solution ensures noiseless operation, lower failure rate and greater protection against dust and other dirt while reducing the amount of energy consumed.

RESISTANCE AND DURABILITY



Temperatures

Polywell-J4125AEL2

Celeron

is designed for continuous operation in both very low and high temperatures

ranging from 0°C to 55°C. If the device is switched off, it can already handle temperatures in the range of -20°C to 70°C.

Work temp.	0°C to 55°C
Storage temp.	-20°C to 70°C
Work Humidity	5% to 95%
Storage Humidity	5% to 95%

Mechanical damage

The passive cooling system used in the MiniPC Polywell-J4125AEL2 Celeron combined with the non-disk SSD (option) make this computer very resistant to various types of mechanical injuries. An additional advantage of industrial computers is a solid construction made of high quality aluminum and specially designed in such a way that in addition to high efficiency in heat dissipation, it can also resist any external damage.

CONNECTIVITY AND COMMUNICATION

Wired LAN Network

MiniPC Polywell-J4125AEL2 Celeron has two built-in network cards that work in a fast Gigabit Ethernet network. 1x Realtek RTL8111H Gigabit (10/100/1000 Mb/s) LAN, and 1x Intel I211 Gigabit (10/100/1000 Mb/s) LAN.

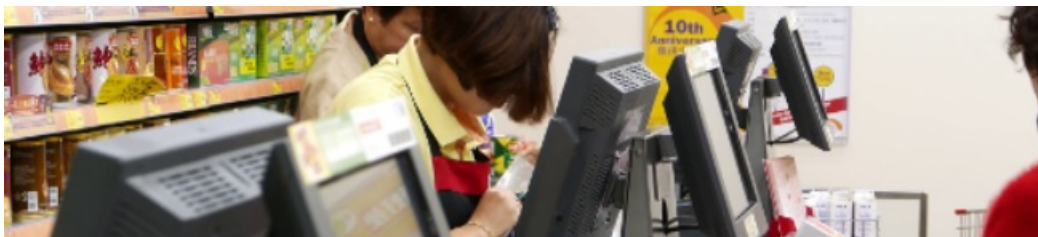


DEVICE APPLICATION

Trade and service

Mini PC is an ideal tool to support us in the implementation of many activities in the field of trade, small dimensions increase the possibility of its adaptation to activities such as issuing invoices or preparing documentation, which in turn allows us to convenient and optimal sales management. The VESA holder mounted to the housing provides many installation options, eg in stores (at the cash register, under the desktop, behind the LCD / LED monitor), in factory halls or in a delivery truck.

VESA



Warehouse and logistics

Thanks high performance an industrial computer can be used to connect multiple devices in a warehouse and make their management much easier. Its rugged casing and the fanless cooling system are ideal for harsh environments in such rooms. The solid construction guarantees long-lasting work, even in environments with high dustiness and dirt.



Transport and motorization

A small industrial computer can be used in transport thanks to the ability to work on 12V power supply. Then the mini computer can be used in passenger cars, buses, trams, taxis, trains and even in airplanes. It allows you to inform the driver about the current state of the vehicle, transfer its current location to the management center, display information for passengers, etc. It performs well in vehicles where small dimensions are important.



More photos in full resolution available in the "Gallery".

AVAILABLE VERSIONS

The industrial mini-computer Polywell-J4125AEL2 is offered in several versions to suit different needs. By clicking on the number of the hardware configuration you will be redirected to the product with the parameters given in the table below.

	v.0	v.1	v.2
4GB DDR4 RAM	—	+	+
32GB eMMC	—	+	—
64GB eMMC	—	—	+
Linux	—	+	—
Windows 10 Pro	—	—	+