



Polywell-Nano-H510A v.1 - Industrial miniPC computer in a resistant metal housing - with Celeron processor, HDMI, DP and USB-C



<b>Category:</b>	MiniPC Industry
<b>Manufacturer:</b>	Polywell
<b>Supported OS:</b>	Windows 7/8/10, IoT, Linux
<b>Installed OS:</b>	-----
<b>Chipset:</b>	Intel Chipset
<b>CPU Support:</b>	ntel Celeron
<b>Installed CPU:</b>	Intel Celeron G5905T (2x3.3GHz)
<b>Graphic Card:</b>	Intel® UHD 750 Graphics
<b>Memory Support:</b>	DDR4 (max.8GB)
<b>Installed Memory:</b>	<b>4GB DDR4</b>
<b>Storage (HDD) Support:</b>	SSD
<b>Installed Storage (HDD):</b>	<b>120GB SSD</b>
<b>IP Norm:</b>	-----
<b>Temp:</b>	-5°C to 45°C
<b>Storage temperature:</b>	-20°C to 70°C
<b>Humidity:</b>	8% ~ 90%
<b>Others:</b>	Black

<b>LAN:</b>	Intel® I219LM Gigabit (10/100/1000 Mb/s)
<b>Wireless LAN card:</b>	Option 2230 (for WiFi+BT or other module)
<b>3G:</b>	-----
<b>Bluetooth:</b>	No
<b>Rear Panel (ports):</b>	1xDC
<b>Front Panel (ports):</b>	1xUSB 3.0 3xUSB 2.0 1xUSB-C 3.2 1xVGA 1xHDMI 1xDP 1xLAN
<b>Expansion:</b>	-----
<b>Power:</b>	19V
<b>Watch Dog Timer:</b>	Yes
<b>CD/DVD Drive:</b>	-----
<b>TV Tuner:</b>	-----
<b>Dimensions:</b>	200.6mm x 119.3mm x 29.9 mm
<b>Fanless:</b>	Yes
<b>Weight:</b>	680g

**2 038,73 zł**

net price: 1 657,50 zł



## TECHNICAL SPECIFICATION

## RESISTANCE AND DURABILITY

## CONNECTIVITY AND COMMUNICATION

## DEVICE APPLICATION

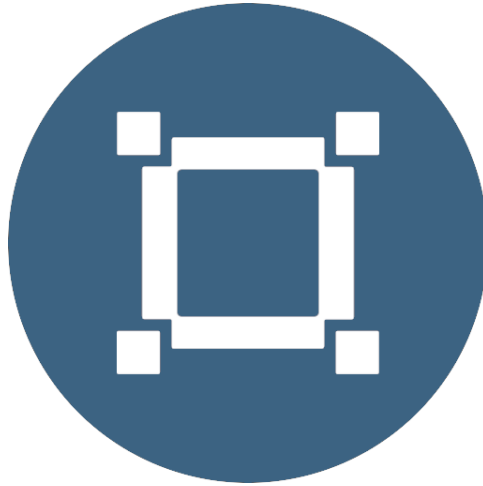
## AVAILABLE VERSIONS

Small dimensions industrial computers excel in environments where dust, dirt and moisture predominate. They are ideal for applications requiring quiet operation. Small and reliable MiniPC use heat-pipe technology and aluminum

fins for passive cooling. The robust mini Industrial Computer

Polywell-Nano-H510A

is a device designed for all industrial and non-continuous applications requiring continuous operation - 24 hours, 7 days a week.



#### Small dimensions

The compact housing means that the Mini PC will fit wherever you need it and is easy to carry.



#### Lightweight design

The computer's weight does not exceed 0,68 kg, so it can be conveniently carried in a

bag or backpack.



#### Efficient components

The Intel Celeron®  
G5905T dual-core CPU  
provides improved  
device performance.



#### Wireless network \*

The mini PC can be  
connected to nearby  
wireless networks by  
equipping it with an  
optional Wi-Fi module.



#### Quick start

A modern SSD drive will increase the speed of application programs and ensure quiet computer operation.



#### Passive cooling

The use of passive cooling in the Mini PC ensures silent operation and slows dust deposition.

\* Optional equipment, available in other versions of the device.

## SPECIFICATION

Polywell-Nano-H510A	
Processor	Intel Celeron® G5905T (2x3,3 GHz).
Operation system	Support: Windows 7/8/10, IoT, Linux
RAM	DDR4: 4GB
Drive	120 GB SSD
Graphic card	Intel® UHD 750 Graphics
Connectivity	LAN: 1 x Intel® I219LM Gigabit (10/100/1000Mbps)
Front panel	1xUSB 3.0 3xUSB 2.0  1xVGA 1xType-C USB 3.2 1xHDMI 2.0  1xDP 1.2  1xLAN   2x3.5mm Audio jacks
Rear panel	1 x DC
Available colors	Black
Dimensions	200.6 x 119.3 x 29.9 mm
Weight	0,68 kg



Detailed device specification is available in the "Technical data".

Efficient processor



The industrial mini-computer Polywell-Nano-H510A uses an efficient and energy-saving Intel Celeron® G5905T processor. Inside it there are two cooperating cores enabling more efficient processing of many tasks at the same time. The shared cache memory in which the multilevel hierarchy is used is dynamically allocated to each processor core depending on the load. This reduces the average access time to the main memory.

### Interfaces





## Dimensions

"

Thanks to the small dimensions of the MiniPC, the is versatile for use at home, in the office and in the industry, for example in the production hall. It's literally everywhere, and thanks to the VESA mount it can be mounted on the back of the monitor to optimize the job.

<b>Dimensions</b>	200.6 x 119.3 x 29.9 mm
<b>Weight</b>	0,68 kg

## Passive coolong

The industrial Mini PC uses a proven cooling system, based only on solid elements, mainly heat sinks. The system uses the phenomenon of metals passing thermal energy into the environment - there are no additional moving elements in the form of eg fans. This solution ensures noiseless operation, lower failure rate and greater protection against dust and other dirt while reducing the amount of energy consumed.



## Mechanical damage

The passive cooling system used in the MiniPC Polywell-Nano-H510A combined with the non-disk SSD make this computer very resistant to various types of mechanical injuries. An additional advantage of industrial computers is a solid construction made of high quality aluminum and specially designed in such a way that in addition to high efficiency in heat dissipation, it can also resist any external damage.

## CONNECTIVITY AND COMMUNICATION

### Wireless network

The dual-band Wi-Fi module provides quick access to the network wherever you can connect to secured or open Wi-Fi networks. This is a convenient solution for people who have a router at home or place of residence and a wireless network that can be used at no extra charge. Industrial mini-PC Polywell-Nano-H510A has been equipped the standard of - M.2 2230 , which allows transfer of files at a dizzying speed of up to 1200 Mb / s.

### Wired LAN Network

The MiniPC Polywell-Nano-H510A has built-in Intel® I219LM Gigabit (10/100/1000 Mb/s) network adapter that can work in a fast Gigabit Ethernet network.

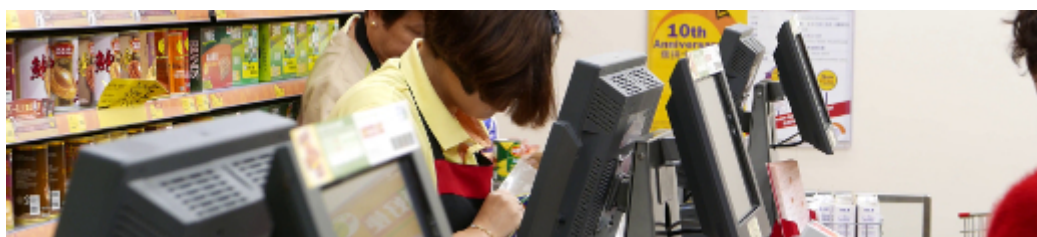


## DEVICE APPLICATION

Trade and service

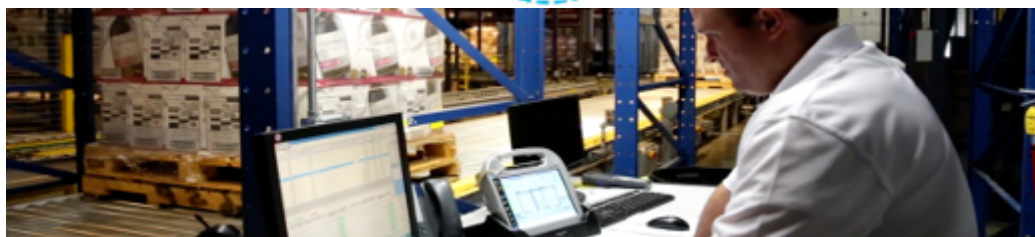
Mini PC is an ideal tool to support us in the implementation of many activities in the field of trade, small dimensions increase the possibility of its adaptation to activities such as issuing invoices or preparing documentation, which in turn allows us to convenient and optimal sales management. The VESA holder mounted to the housing provides many installation options, eg in stores (at the cash register, under the desktop, behind the LCD / LED monitor), in factory halls or in a delivery truck.

VESA



## Warehouse and logistics

Thanks high performance an industrial computer can be used to connect multiple devices in a warehouse and make their management much easier. Its rugged casing and the fanless cooling system are ideal for harsh environments in such rooms. The solid construction guarantees long-lasting work, even in environments with high dustiness and dirt.



## Transport and motorization

A small industrial computer can be used in transport thanks to the ability to work on 19V power supply. Then the mini computer can be used in passenger cars, buses, trams, taxis, trains and even in airplanes. It allows you to inform the driver about the current state of the vehicle, transfer its current location to the management center, display information for passengers, etc. It performs well in vehicles where small dimensions are important.



More photos in full resolution available in the "Gallery".

## AVAILABLE VERSIONS

The industrial mini-computer Polywell-Nano-H510A is offered in several versions to suit different needs. By clicking on the number of the hardware configuration you will be redirected to the product with the parameters given in the table below.

	v.1	v.2	v.3	v.4	v.5
120GB SSD	+	+	+	-	-
240GB SSD	-	-	-	+	+
DDR 4 4GB RAM	+	+	+	-	-
DDR 4 8GB RAM	-	-	-	+	+
Intel Celeron G5905T	+	-	-	-	-
Intel Pentium Gold G6405T	-	+	-	-	-
Intel Core i3-10110T	-	-	+	-	-
Intel Core i5-11400T	-	-	-	+	-

Intel Core i7-11700T

—

—

—

—

+