



Robust Dust-proof industrial laptop Emdoor X14

Category:	Laptops - Rugged
Manufacturer:	EMDOOR
Operating System:	Windows 10 (without license)
Display:	14" LED Gorilla Glass 3 Scratch resistant
Brightness:	700cd/m ²
Touch screen:	-----
Processor:	Intel® Core™ i5-8250U (4x 1.6 GHZ)
Graphics card:	Intel® HD Graphics 620
Memory:	8GB DDR4L
Hard Drive:	256GB SSD M.2
Durability:	IP65 1m. drops MIL-STD 810G
Security:	IP65 1m. drops MIL-STD 810G
Sand and dust:	IP6X
Waterproof:	IPX5
Drop:	up to 1m.
Shock:	MIL-STD 810G
Vibration:	MIL-STD 810G
Temperature:	Work temp.: -10°C do 50°C Storage temp.: -30°C do 70°C

Humidity:	0 - 95%
1D barcode scanner (reader):	No
2D barcode scanner (reader):	No
RFID scanner (reader):	No
Other:	-----
Battery:	2000mAh/7.4V (built in) / 6300mHA/7.4V (Pluggable)
Working time on battery:	6 hours
Fast battery replacement ability:	Yes
HotSwap battery:	No
LAN:	Yes
WLAN:	802.11 a/b/g/n/ac
WAN:	3G/2G: GSM/GPRS/EDGE Band (850&900&1800&1900 MHZ)WCDMA Band(850&900&1900&2100MHz)HSDPA 21MbpsHSUPA 5.76 Mbps 4G: LTE: B1/B2/B3/B4/B5/B7
WAN:	3G/2G: GSM/GPRS/EDGE Band (850&900&1800&1900 MHZ)WCDMA Band(850&900&1900&2100MHz)HSDPA 21MbpsHSUPA 5.76 Mbps 4G: LTE: B1/B2/B3/B4/B5/B7
Bluetooth:	Bluetooth 4.2 (BLE)
GPS:	u-Blox NEO-7 (GLONASS+QZSS+GPS)
In/Out:	RS232 RJ45 3x USB 3.0 DC> USB 2.0 SD SIM HDMI Type A Audio Jack
Flash Card Reader:	Micro SD
Audio:	Speakers 0.8W/8Ω Audio Jack
CD/DVD:	No
COM port:	1x DB9 (1x RS232)
Camera:	Front: 2Mpx
Magnetic card reader (MSR):	No
Microchip card reader:	No
Keyboard:	Yes
Additional Navigation Devices :	No
Optional accessories:	-----

Docking station connector:	No
VESA standard – holders and mounts support:	No
BIOS:	----
Chipset:	----
Swivel Hinge:	----
Contrast:	----
VGA out:	No
TV Out:	No
TV Tuner:	No
Casing material:	----
Color:	----
Size:	305 x 205 x 16.5mm - 2850g
Fanless casing:	Yes

7 546,05 zł

net price: 6 135,00 zł



Fully Rugged Notebook = X14

TECHNICAL SPECIFICATION

RESISTANCE AND DURABILITY

CONNECTIVITY AND COMMUNICATION

DEVICE APPLICATION

AVAILABLE VERSIONS

Small dimensions industrial notebook excel in environments where dust, dirt and moisture predominate. They are ideal for applications requiring quiet operation. Small and reliable notebook use heat-pipe technology and aluminum fins for passive cooling. The robust industrial laptop is a device designed for all industrial and non-continuous applications requiring continuous operation - 24 hours, 7 days

a week



Reinforced housing

The reinforced Emdoor notebook case is resistant to mechanical damage and external factors such as temperature difference.



Lightweight design

The notebook weight does not exceed 3.0 kg, so it can be conveniently carried in a bag or backpack.



Efficient components

The Intel Core i5 8250U quad - core CPU provides improved device performance.



Wireless network

The notebook can be connected to nearby wireless networks by equipping it with an installed Wi-Fi module.



Quick start



Passive cooling

A modern SSD M.2 drive will increase the speed of application programs and ensure quiet computer operation.

The use of passive cooling in the notebook ensures silent operation and slows dust deposition.

go

SPECIFICATION

Performance

Processor	Intel Core i5 8250U (4x 1.60GHz)
Graphics card	Intel UHD Graphics 620
Operating system	Windows 10 (Home [*] / Professional [*] / IoT [*])
RAM	8 GB DDR4L
Drive	256 SSD M.2

Interfaces

Connectivity	Wi-Fi Intel 3165 (a/b/g/n/ac) 2x LAN - Intel I219 + I210 10/100/1000 Mbps
--------------	--

Interfaces

Connectors	1x RS232 2x RJ45 3x USB 3.0 DC 1x USB 2.0 1x SD Card 1x SIM 1x HDMI Type A 1x Audio Jack
------------	--

Other

Available colors	Black
Dimensions	305mm x 205mm x 16,5mm
Weight	2.850 kg

* Optional equipment, available only in other versions of the device.



Detailed device specification is available in the "Technical data" tab.

Comparison of disk speeds

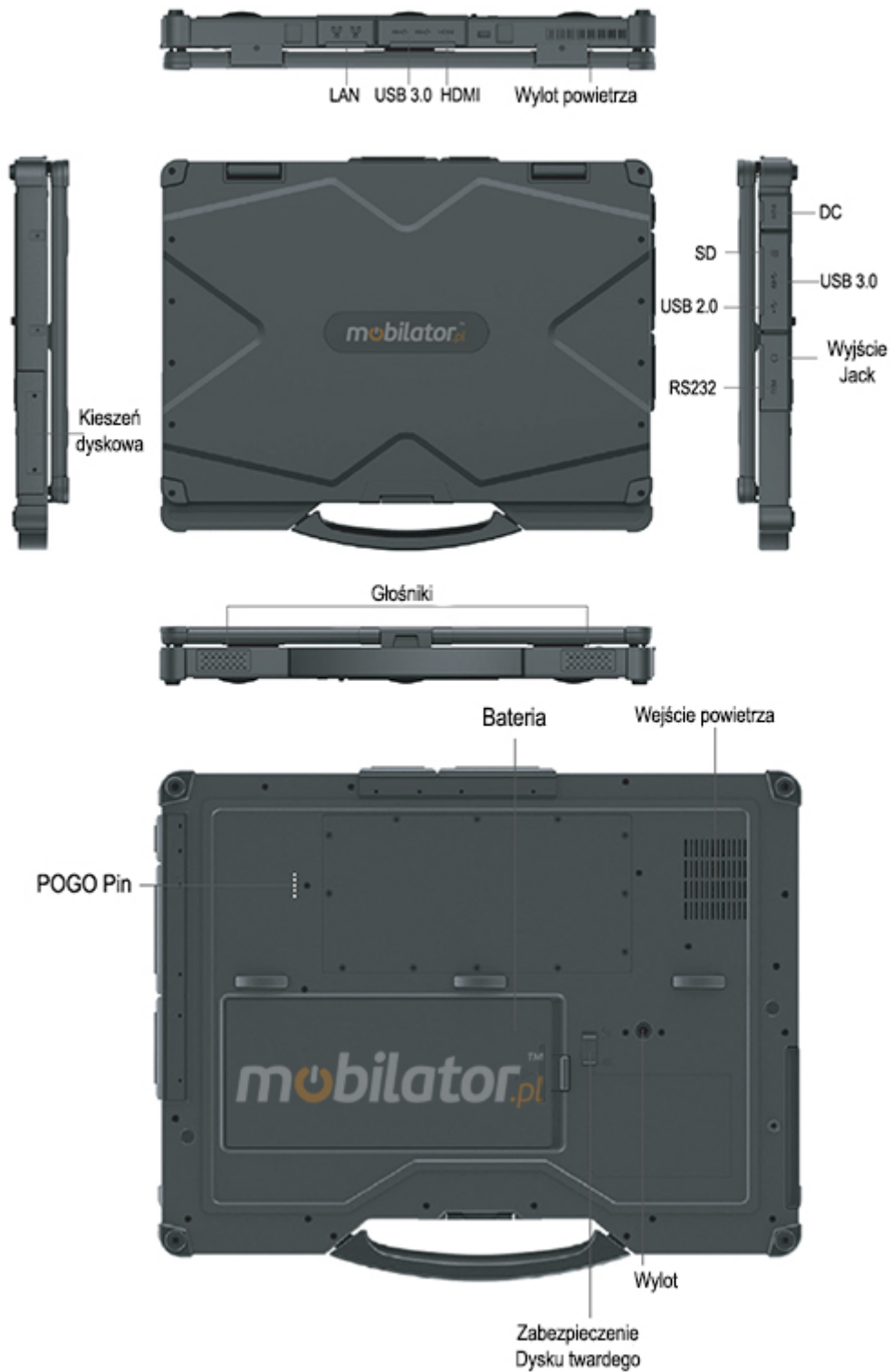
HDD	Read: 170MB/s Write: 140MB/s
SSD M.2 Drive	Read: 520 MB/s Write: 370MB/s

EFFICIENT PROCESSOR

The industrial notebook Emdoor X14 uses an efficient and energy-saving Intel Intel Core i5 8250U processor. Inside it there are four cooperating cores enabling more

efficient processing of many tasks at the same time. The shared cache memory in which the multilevel hierarchy is used is dynamically allocated to each processor core depending on the load. This reduces the average access time to the main memory.





DIMENSIONS



PASSIVE COOLING

The industrial Emdoor Notebook uses a proven cooling system, based only on solid elements, mainly heat sinks. The system uses the phenomenon of metals passing thermal energy into the environment - there are no additional moving elements in the form of eg fans. This solution ensures noiseless operation, lower failure rate and greater protection against dust and other dirt while reducing the amount of energy consumed.

[go up...](#)

RESISTANCE

TEMPERATURES

X14 by Emdoor is designed for continuous operation in both very low and high temperatures ranging from -10°C to 50°C . If the device is switched off, it can

already handle temperatures in the range of -30 ° C to 70 ° C.



Work temp.	-10°C — 50°C
Storage temp.	-30°C — 70°C
Humidity	10% — 95%

MECHANICAL DAMAGE

The passive cooling system used in the notebook combined with the non-disk SSD M.2 make this computer very resistant to various types of mechanical injuries. An additional advantage of industrial computers is a solid construction made of high quality aluminum and specially designed in such a way that in addition to high efficiency in heat dissipation, it can also resist any external damage.

[go up...](#)

WIRELESS NETWORK

The dual-band Wi-Fi module provides quick access to the network wherever you can connect to secured or open Wi-Fi networks. This is a convenient solution for people who have a router at home or place of residence and a wireless network that can be used at no extra charge. Industrial notebook X14 has been equipped the standard of - 802.11(a/b/g/n/ac), which allows transfer of files at a dizzying speed of up to 433 Mb / s.

WIRED LAN NETWORK

The notebook Emdoor X14 has built-in the Intel network adapter that can work in a fast Gigabit Ethernet network.

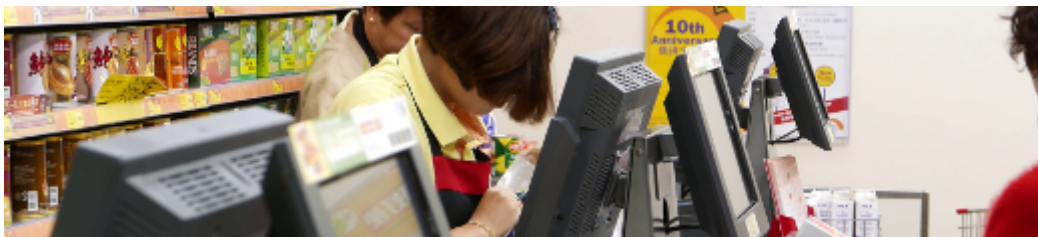


[go up...](#)

APPLICATIONS

TRADE AND SERVICES

Industrial notebook is an ideal tool to support us in the implementation of many activities in the field of trade, small dimensions increase the possibility of its adaptation to activities such as issuing invoices or preparing documentation, which in turn allows us to convenient and optimal sales management.



WAREHOUSE AND LOGISTICS

Thanks high performance an industrial notebook can be used to connect multiple devices in a warehouse and make their management much easier. Its rugged casing and the fanless cooling system are ideal for harsh environments in such rooms. The solid construction guarantees long-lasting work, even in environments with high dustiness and dirt.



More pictures of the device available in the ["Gallery"](#) tab.

[go up...](#)



The industrial Emdoor X14 notebook is offered in several versions to suit different needs. By clicking on the number of the hardware configuration you will be redirected to the product with the parameters given in the table below. In addition, it is possible to create a configuration that is currently unavailable on the customer's request.

	v.1	v.2	v.3	v.4	v.5	v.6	v.7	v.8
128 GB SSD	+	-	-	-	-	-	-	-

256 GB SSD	-	+	-	-	-	-	-	+
1 TB SSD	-	-	+	-	-	-	-	-
Windows 10 Home	-	-	-	+	-	-	-	-
Windows 10 Pro	-	-	-	-	+	-	-	-
Windows 10 IoT	-	-	-	-	-	+	-	-
4G	-	-	-	-	-	-	+	+
Screen Dotykowy	-	-	-	-	-	-	-	-
	v.9	v.10	v.11	v.12	v.13	v.14	v.15	v.16
128 GB SSD	-	-	-	-	-	-	-	-
256 GB SSD	+	-	+	-	+	-	+	-
1 TB SSD	-	+	-	+	-	+	-	+
Windows 10 Home	-	-	-	-	-	-	-	-
Windows 10 Pro	+	+	+	+	+	+	-	-
Windows 10 IoT	-	-	-	-	-	-	-	-
4G	+	+	-	-	+	+	+	+
Screen Dotykowy	-	-	-	-	+	+	+	+