



## Rugged Industrial Data Collecto MobiPad SL70 v.4

<b>Category:</b>	UMPC - Ruggedized
<b>Manufacturer:</b>	Mobikator
<b>Operating System:</b>	Android 9.0
<b>Display:</b>	5,7" (720x1440) IPS LCDPojemnościowy
<b>Brightness:</b>	0-100,000 lux(total darkness to bright sunlight)
<b>Processor:</b>	Cortex A53 - 2.0 GHz Octa Core (8x 2.0 GHz)
<b>Memory:</b>	3GB
<b>Hard Drive:</b>	32GB
<b>Flash Memory:</b>	Yes
<b>Touch screen:</b>	Yes
<b>Durability:</b>	IP66
<b>Drop:</b>	1.2 meters
<b>Shock:</b>	-----
<b>Vibration:</b>	-----
<b>Temperature:</b>	Operating temperature: -20°C -- +55°CStorage temperature: -40°C -- +70°C
<b>Humidity:</b>	5% - 95% non-condensing
<b>1D barcode scanner (reader):</b>	No (Available in other version)

<b>2D barcode scanner (reader):</b>	2D Scanner Honeywell N3603
<b>RFID scanner (reader):</b>	NFC 13.56 MHz ISO 14443A/B & 15693 Range: 2cm to 5cm
<b>Other:</b>	Digital Compass   Gravity Sensor
<b>Battery:</b>	3.8V 5000mAh Lithium
<b>Working time on battery:</b>	Operating time (depending on usage) - 12h
<b>Fast battery replacement ability:</b>	No
<b>HotSwap battery:</b>	No
<b>LAN:</b>	-----
<b>WLAN:</b>	IEEE 802.11 a/b/g/n
<b>Bluetooth:</b>	Bluetooth 4.1
<b>WAN:</b>	GSM: 900/1800/1900 B2/B3/B8 WCDMA: 850/1900/2100 B1/B2/B5 FDD-LTE: 1800/2100/2600 B1/B3/B7 LTE_TDD: 2555-2655MHz / 2300-2400MHz B41/B40
<b>GPS:</b>	Support GPS, DBS, GLONASS
<b>Camera:</b>	-----
<b>In/Out:</b>	USB Type C   Port TF Card   Port Nano SIM   2x PSAM
<b>Optional accessories:</b>	Additional battery, Docking station
<b>Docking station connector:</b>	Yes
<b>VESA standard – holders and mounts support:</b>	-----
<b>COM port:</b>	No
<b>Magnetic card reader (MSR):</b>	-----
<b>Microchip card reader:</b>	-----
<b>Contrast:</b>	800:1
<b>Graphics card:</b>	-----
<b>Chipset:</b>	-----
<b>BIOS:</b>	-----
<b>Casing material:</b>	high quality plastik and rubber
<b>Flash Card Reader:</b>	micro SD/TF max. 128GB

<b>CD/DVD:</b>	-----
<b>Audio:</b>	Build-in Microphone   Build-in Speaker  Audio Jack
<b>Keyboard:</b>	Touch screen + buttonsHome   Menu   Return   ON/OFF   Volume+/-   Functional
<b>Additional Navigation Devices :</b>	-----
<b>Color:</b>	black
<b>Swivel Hinge:</b>	-----
<b>VGA out:</b>	-----
<b>TV Out:</b>	-----
<b>TV Tuner:</b>	-----
<b>Security:</b>	IP66
<b>Waterproof:</b>	IP66
<b>Sand and dust:</b>	IP66
<b>Size:</b>	159 mm x 75 mm x 124 mm
<b>Fanless casing:</b>	Yes

**2 015,66 zł**

net price: 1 638,75 zł



## TECHNICAL SPECIFICATION

## RESISTANCE AND DURABILITY

## CONNECTIVITY AND COMMUNICATION

## DEVICE APPLICATION

## AVAILABLE VERSIONS

Small dimensions industrial MobiPad SL70 excel in environments where dust, dirt and moisture predominate. They are ideal for applications requiring quiet operation. Small and reliable umpc use heat-pipe technology and plastic fins for passive cooling. The robust industrial laptop is a device designed for all industrial and non-continuous applications requiring continuous operation - 24 hours, 7 days a week.



### Reinforced housing

The reinforced MobiPad case is resistant to mechanical damage and external factors such as temperature difference.



### Lightweight design

The data terminal weight does not exceed 600 g, so it can be conveniently carried in a bag or backpack.



### Efficient components

The Cortex by Qualcomm quad - core CPU provides improved device performance.



### Wireless network

The umpc can be connected to nearby wireless networks by equipping it with an installed Wi-Fi module.



### Quick start

A modern eMMC memory will increase the speed of application programs.



### IP66 Protection

Thanks to the IP66 standard, we are provided with complete protection against dust and immersion of the device in water.

go

# SPECIFICATION

## Performance

Processor	Cortex A53 - 2.0 GHz Octa Core
Operating system	Android 9.0
RAM	3 GB
Drive	32 GB eMMC

## Interfaces

Connectivity	Wi-Fi IEEE (802.11 a/b/g/n ; 2.4 GHz/5GHz) LTE, WCDMA, GSM, GPRS, Edge Bluetooth 4.1
--------------	--

Interfaces	
Connectors	2x PSAM 1x Nano SIM 1x TF Card 1x USB - Type C
Other	
Available colors	Black
Dimensions	147.3 mm x 71.1 mm x 13.5 mm
Weight	~550 g



Detailed device specification is available in the "Technical data" tab.

## EFFICIENT PROCESSOR

The industrial umpc MobiPad SL70 uses an efficient and energy-saving Qualcomm Quad Core processor. Inside it there are four cooperating cores enabling more efficient processing of many tasks at the same time. The shared cache memory in which the multilevel hierarchy is used is dynamically allocated to each processor core depending on the load. This reduces the average access time to the main memory.

## INTERFACES



function button



pistol grip



Scan window



Type-c interface

## DIMENSIONS



The ergonomics of work is provided by a functional keyboard and a color touch screen, everything is enclosed in a slim and small housing. Thanks to this, you can take it anywhere with you.

[go up...](#)

# RESISTANCE

## TEMPERATURES

SL70 by MobiPad is designed for continuous operation in both very low and high temperatures ranging from  $-20^{\circ}\text{C}$  to  $50^{\circ}\text{C}$ . If the device is switched off, it can already handle temperatures in the range of  $-20^{\circ}\text{C}$  to  $\sim 70^{\circ}\text{C}$ .










Work temp.

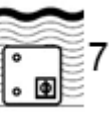
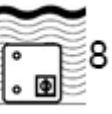
$-20^{\circ}\text{C}$  —  $\sim 50^{\circ}\text{C}$

Storage temp.	-20°C — ~70°C
Humidity	10% — 95%

## IP66 PROTECTION

IP stands for Ingress Protection and is essentially a rating system developed by the International Electrotechnical Commission or the IEC. The system is now being used to classify different degrees of protection against intrusion or immersion. The IP rating is usually followed by two digits. The first indicates the level of dust-resistance, the second water resistance. Dust-resistance levels goes from 0 up to 6 while water-resistance goes from 0 to 8.

The first digit [x] Protection against solid objects	Protection Level	The second digits [y] Protection against liquids
No special protection	0  0	No special protection
Protection from solid objects greater than 50mm in diameter	1  1	Protection from dripping water
Protection from object not greater than 12mm in diameter	2  2	Protection from vertically dripping water (tilted up to 15°)
Protection from object not greater than 2,5mm in diameter	3  3	Protection from sprayed water (tilted up to 60°)
Protection from object not greater than 1mm in diameter	4  4	Protection from splashed water
Complete protection against contact, Protection against dust deposit	5  5	Protection from water projected from a nozzle
Complete protection against contact, Protection from infiltration of dust	6  6	Protection against heavy seas, or powerful jets of water

The first digit [x] Protection against solid objects	Protection Level	The second digits [y] Protection against liquids
		Protection against immersion
		Protection against complete, continuous submersion in water

## MECHANICAL DAMAGE

The passive cooling system used in the umpc combined with the eMMC memory make this computer very resistant to various types of mechanical injuries. An additional advantage of industrial computers is a solid construction made of high quality plastic and specially designed in such a way that in addition to high efficiency in heat dissipation, it can also resist any external damage.

[go up...](#)

# CONNECTION

## WIRELESS NETWORK

The dual-band Wi-Fi module provides quick access to the network wherever you can connect to secured or open Wi-Fi networks. This is a convenient solution for people who have a router at home or place of residence and a wireless network that can be used at no extra charge. Industrial umpc X14 has been equipped the

standard of - 802.11(a/b/g/n), which allows transfer of files at a dizzying speed of up to 300 Mb / s.

## BARCODE SCANNER

Barcode Reader allows you to read, decode and transfer stored data in barcode to your computer. Thanks to dynamic scanning method and the large range of reading, data collector is capable to carefully collecting data, which helps to increase the rate and efficiency of work. Simplified installation procedure, convenient and intuitive design allow to start scanner work very easy and quickly.



C

It's a set of ideas and technology that enables smartphones and other devices to establish radio communication with each other by touching the devices together or

bringing them into proximity to a distance of typically 10 cm or less.

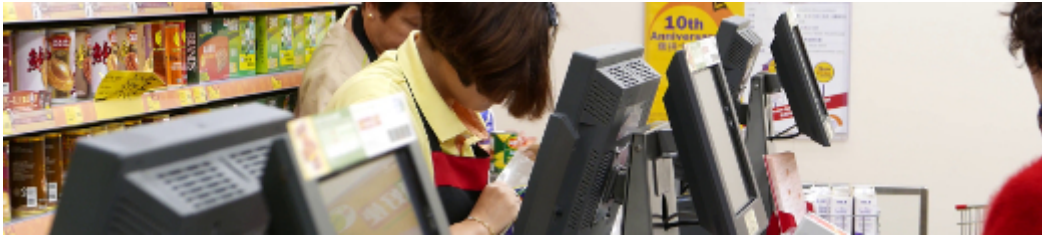


[go up...](#)

# APPLICATIONS

## TRADE AND SERVICES

Industrial umpc is an ideal tool to support us in the implementation of many activities in the field of trade, small dimensions increase the possibility of its adaptation to activities such as quick scan 1D or 2D barcodes in optimal sales management.



## WAREHOUSE AND LOGISTICS

Thanks to high performance an industrial PDA can be used to connect multiple devices in a warehouse and make their management much easier. Its rugged casing is ideal for harsh environments in such rooms. The solid construction guarantees long-lasting work, even in environments with high dustiness and dirt.



## CONVENIENCE AND PRECISION

The pistol grip with which our data collector is equipped allows for long-term comfortable work and perfect precision during inventory taking.



More pictures of the device available in the ["Gallery"](#) tab.

[go up...](#)

## VERSIONS



The industrial MobiPad SL70 umpc is offered in several versions to suit different needs. By clicking on the number of the hardware configuration you will be redirected to the product with the parameters given in the table below. In addition, it is possible to create a configuration that is currently unavailable on the customer's request.

	v.1	v.2	v.3	v.4
2D Scanner Honeywell N3603	–	+	–	+
NFC	–	–	+	+