



Rugged Industrial tablet Neway VT-7

Category:	UMPC - Ruggedized
Manufacturer:	Mobikator
Operating System:	Android 7.1.2
Display:	7" (1280x800) IPS LCD Pojemnościowy Sunlight readable 800 nits
Brightness:	800nits
Processor:	Qualcomm Quad-core Cortex - A7 (4x 1.1 GHz)
Memory:	2GB
Hard Drive:	16GB
Flash Memory:	Yes
Touch screen:	Tak
Durability:	IP66
Drop:	1.2 meters
Shock:	-----
Vibration:	-----
Temperature:	Operating temperature: -20°C -- +50°C Storage temperature: -40°C -- +60°C
Humidity:	5% - 95% non-condensing
1D barcode scanner (reader):	none
2D barcode scanner (reader):	none

RFID scanner (reader):	none
Other:	Digital Compass Gravity Sensor
Battery:	3.7V 5000mAh Lithium
Working time on battery:	Operating time (depending on usage) - 6h
Fast battery replacement ability:	No
HotSwap battery:	No
LAN:	-----
WLAN:	IEEE 802.11 a/b/g/n
Bluetooth:	Bluetooth 4.2
WAN:	GSM: 900/1800/1900 B2/B3/B8WCDMA: 850/1900/2100 B1/B2/B5FDD-LTE: 1800/2100/2600 B1/B3/B7LTE_TDD:2555-2655MHz/:2300-2400MHz B41/B40
GPS:	Support GPS, DBS, GLONASS
Camera:	-----
In/Out:	USB - C Port TF Card Port SIM Audio Jack DC
Optional accessories:	Docking station, additional charger, OBD-II, SAE J1939
Docking station connector:	-----
VESA standard – holders and mounts support:	-----
COM port:	Yes - In docking station
Magnetic card reader (MSR):	-----
Microchip card reader:	-----
Contrast:	800:1
Graphics card:	Adreno 304
Chipset:	-----
BIOS:	-----
Casing material:	high quality plastik and rubber
Flash Card Reader:	micro SD/TF max. 64GB
CD/DVD:	-----

Audio:	Build-in Microphone Build-in Speaker Audio Jack
Keyboard:	Ekranowa + Touch buttons Home Menu Return ON/OFF Volume Reset NFC (funkcyjny)
Additional Navigation Devices :	-----
Color:	black
Swivel Hinge:	-----
VGA out:	-----
TV Out:	-----
TV Tuner:	-----
Security:	IP66
Waterproof:	IP66
Sand and dust:	IP66
Size:	200mm*130mm*28.5mm785g
Fanless casing:	Yes

Product from the Archive - production finished



TECHNICAL SPECIFICATION

RESISTANCE AND DURABILITY

CONNECTIVITY AND COMMUNICATION

DEVICE APPLICATION

AVAILABLE VERSIONS

Small dimensions industrial Neway VT-7 excel in environments where dust, dirt and moisture predominate. They are ideal for applications requiring quiet operation. Small and reliable umpc use heat-pipe technology and plastic fins for passive cooling. The robust industrial laptop is a device designed for all industrial and non-continuous applications requiring continuous operation - 24 hours, 7 days a week.



Reinforced housing

The reinforced Neway umpc case is resistant to mechanical damage and external factors such as temperature difference.



Lightweight design

The umpc weight does not exceed 1.0 kg, so it can be conveniently carried in a bag or backpack.



Efficient components

The Cortex by Qualcomm quad - core CPU provides improved device performance.



Wireless network

The umpc can be connected to nearby wireless networks by equipping it with an installed Wi-Fi module.



Quick start



Passive cooling

A modern eMMC memory will increase the speed of application programs.

The use of passive cooling in the umpc ensures silent operation and slows dust deposition.

go

SPECIFICATION


Performance

Processor	Qualcomm Cortex - A7 (4x 1.1 GHz)
Graphic Card	Adreno 304
Operating system	Android 7.1.2
RAM	2 GB
Drive	16 GB eMMC

Interfaces

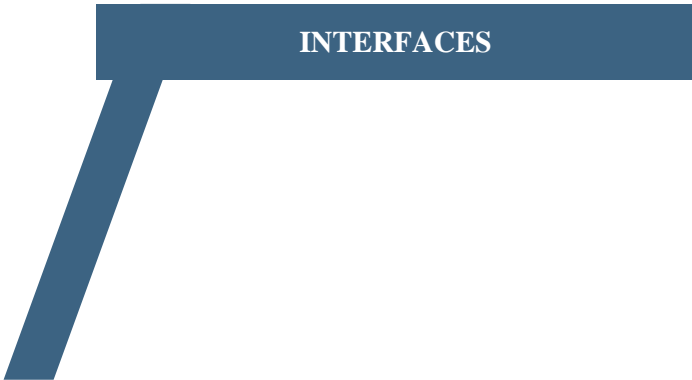
Connectivity	Wi-Fi IEEE (802.11 a/b/g/n ; 2.4 GHz/5GHz) LTE, HSPA+, UMTS, EDGE, GPRS, GSM (voice & data)
--------------	--

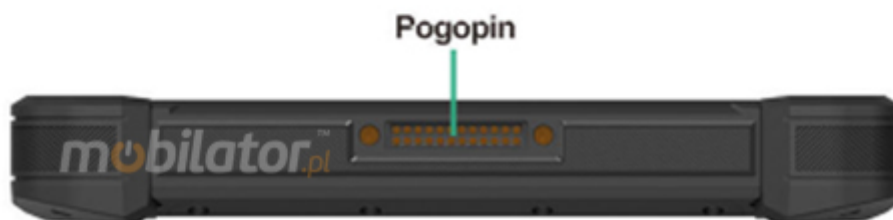
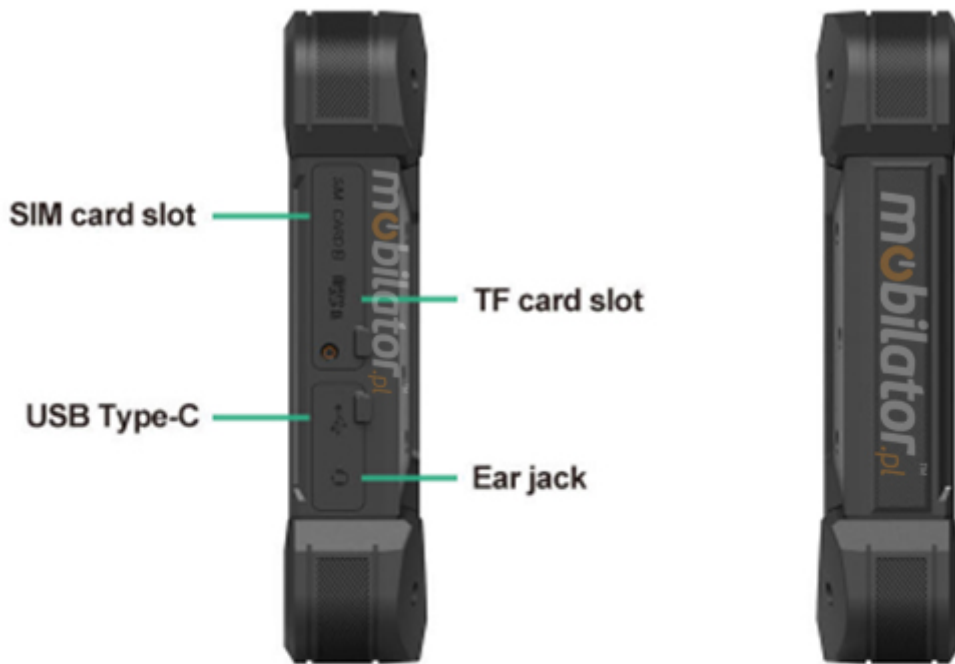
Interfaces	
Connectors	<ul style="list-style-type: none"> 1x Sim card slot 1x Slot TF Card 1x USB - Type C 1x Ear Jack Pogopin
Other	
Available colors	Black
Dimensions	200 mm x 130 mm x 28.5 mm
Weight	0.785 kg

 Detailed device specification is available in the "Technical data" tab.

EFFICIENT PROCESSOR

The industrial umpc Neway VT-7 uses an efficient and energy-saving Qualcomm Quad Core processor. Inside it there are four cooperating cores enabling more efficient processing of many tasks at the same time. The shared cache memory in which the multilevel hierarchy is used is dynamically allocated to each processor core depending on the load. This reduces the average access time to the main memory.





DIMENSIONS



PASSIVE COOLING

The industrial Neway umpc uses a proven cooling system, based only on solid elements, mainly heat sinks. The system uses the phenomenon of metals passing thermal energy into the environment - there are no additional moving elements in the form of eg fans. This solution ensures noiseless operation, lower failure rate and greater protection against dust and other dirt while reducing the amount of energy consumed.

[go up...](#)

RESISTANCE

TEMPERATURES

VT-7 by Neway is designed for continuous operation in both very low and high temperatures ranging from -10 ° C to 65 ° C and 0 ° C to ~55 ° C when device was charging. If the device is switched off, it can already handle temperatures in the range of -20 ° C to ~70 ° C.



Work temp.	-10°C — ~65°C
Storage temp.	-20°C — ~70°C
Humidity	10% — 95%

MECHANICAL DAMAGE

The passive cooling system used in the umpc combined with the eMMC memory make this computer very resistant to various types of mechanical injuries. An additional advantage of industrial computers is a solid construction made of high quality plastic and specially designed in such a way that in addition to high efficiency in heat dissipation, it can also resist any external damage.

CONNECTION

WIRELESS NETWORK

The dual-band Wi-Fi module provides quick access to the network wherever you can connect to secured or open Wi-Fi networks. This is a convenient solution for people who have a router at home or place of residence and a wireless network that can be used at no extra charge. Industrial umpc X14 has been equipped the standard of - 802.11(a/b/g/n), which allows transfer of files at a dizzying speed of up to 300 Mb / s.

DOCKING STATION

In addition, the tablet Neway VT-7 can be equipped with a docking station which is available in three versions, it has such diagnostic connector:

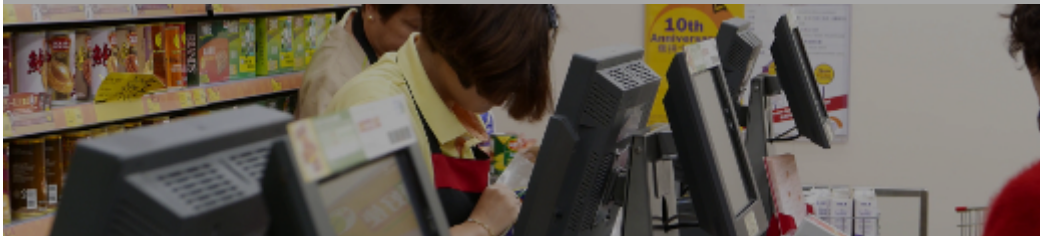
- COM RS232 - Enables eavesdropping of data sent from the master device to the slave devices.



APPLICATIONS

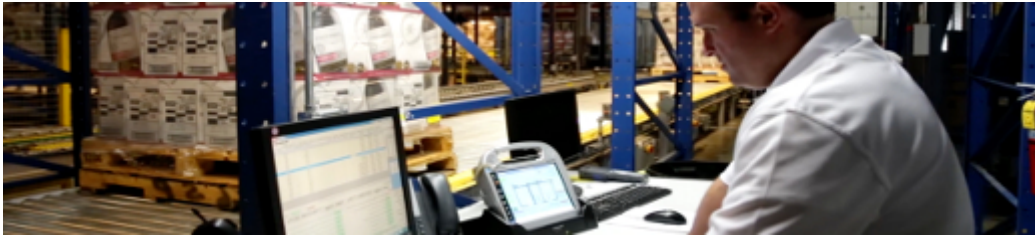
TRADE AND SERVICES

Industrial umpc is an ideal tool to support us in the implementation of many activities in the field of trade, small dimensions increase the possibility of its adaptation to activities such as issuing invoices or preparing documentation, which in turn allows us to convenient and optimal sales management.



WAREHOUSE AND LOGISTICS

Thanks high performance an industrial umpc can be used to connect multiple devices in a warehouse and make their management much easier. Its rugged casing and the fanless cooling system are ideal for harsh environments in such rooms. The solid construction guarantees long-lasting work, even in environments with high dustiness and dirt.



WORKSHOP AND DIAGNOSTIC

With the help of dedicated connectors supported by our tablet, it can be used as a diagnostic tool for cars and machines with an on-board computer, thanks to which we are able to independently detect faults and also test specific systems.



More pictures of the device available in the ["Gallery"](#) tab.

[go up...](#)

VERSIONS



The industrial Neway VT-7 umpc is offered in several versions to suit different needs. By clicking on the number of the hardware configuration you will be redirected to the product with the parameters given in the table below. In addition, it is possible to create a configuration that is currently unavailable on the customer's request.

	v.1	v.2	v.3	v.4	v.5	v.6	v.7	v.8	v.9
Stacja dokująca v.1 (COM RS232)	—	+	—	—	—	—	+	—	—
Stacja dokująca v.2 (SAE J1939)	—	—	+	—	—	—	—	+	—
Stacja dokująca v.3 (OBD-II)	—	—	—	+	—	—	—	—	+
NFC	—	—	—	—	+	—	+	+	+
Aparat	—	—	—	—	—	+	+	+	+