



## Rugged Sincoole ST8200

<b>Category:</b>	UMPC - Ruggedized
<b>Manufacturer:</b>	Sincoole
<b>Operating System:</b>	Android 4.4.2
<b>Display:</b>	8.0" IPS/AFFS LCD (1280x800) Sunlight Readable (optional)
<b>Brightness:</b>	400nits
<b>Processor:</b>	Qualcomm Snapdragon 200 MSM8212 (Quad Core 4x - 1.2GHz)
<b>Memory:</b>	1GB
<b>Hard Drive:</b>	8GB
<b>Touch screen:</b>	Yes - capacitive G+G (5 points)
<b>Durability:</b>	IP67
<b>Drop:</b>	1.5 meters
<b>Shock:</b>	-----
<b>Vibration:</b>	-----
<b>Temperature:</b>	Operating temperature: -20°C -- +50°C Storage temperature: -40°C -- +60°C
<b>Humidity:</b>	5% - 95% non-condensing
<b>1D barcode scanner (reader):</b>	-----
<b>2D barcode scanner (reader):</b>	-----

<b>RFID scanner (reader):</b>	-----
<b>Other:</b>	AccelerometeOrientation SensorGravity SensorLinear Acc SensorMagnetic Field SensorGyroscopeRotation Vestor Sensor1x - Power Adapter1x - Micro USB
<b>Battery:</b>	3.7V 6000mAh Li-Poly
<b>Working time on battery:</b>	Operating time (depending on usage) - 12hStandby time - 480h
<b>Fast battery replacement ability:</b>	No
<b>HotSwap battery:</b>	No
<b>LAN:</b>	-----
<b>WLAN:</b>	IEEE 802.11b/g/n
<b>Bluetooth:</b>	Bluetooth 4.0
<b>WAN:</b>	GSM 850/900/1800/1900MHzUMTS/HSPA+ 850/900/1900/2100MHz
<b>GPS:</b>	Qualcomm® IZat Gen 7™   A-GPS
<b>Camera:</b>	FRONT: 2MPXREAR: 8MPX (Auto Focus+ Flash)
<b>In/Out:</b>	MicroUSB (OTG)   Port MicroSD   Port SIM   Audio Jack
<b>Optional accessories:</b>	-----
<b>Docking station connector:</b>	-----
<b>VESA standard – holders and mounts support:</b>	-----
<b>COM port:</b>	No
<b>Magnetic card reader (MSR):</b>	-----
<b>Microchip card reader:</b>	-----
<b>Contrast:</b>	-----
<b>Graphics card:</b>	Adreno 302
<b>Chipset:</b>	-----
<b>BIOS:</b>	-----
<b>Casing material:</b>	high quality plastic and rubber
<b>Flash Card Reader:</b>	micro SD/TF max. 32GB
<b>CD/DVD:</b>	-----

<b>Audio:</b>	Built-in Microphone   Built-in Speaker   Audio Jack
<b>Keyboard:</b>	Ekranowa + Przyciski fizyczneHome   Menu   Return   ON/OFF   Volume
<b>Additional Navigation Devices :</b>	-----
<b>Color:</b>	orange-black
<b>Swivel Hinge:</b>	-----
<b>VGA out:</b>	-----
<b>TV Out:</b>	-----
<b>TV Tuner:</b>	-----
<b>Security:</b>	IP67
<b>Waterproof:</b>	IP67
<b>Sand and dust:</b>	IP67
<b>Size:</b>	140mm x 220mm x 16mm580g
<b>Fanless casing:</b>	Yes

**Product from the Archive - production finished**



ST8200 adopts the combination of platformization and modular function design concept. It not only has intelligent operation platform, but also has modular functions with flexible configuration. So it can satisfy the customized requirements from different customer.



Processor	Qualcomm Snapdragon 200 MSM8212 (Quad Core 4x - 1.2GHz)
Graphics	Adreno 302
Display	8.0" IPS/AFFS LCD (1280x800)
Type of display	Capacitive (G+G 5 points)
Brightness	400nits
RAM	1GB
ROM	8GB
Connectors (factory)	MicroUSB (OTG)   Port MicroSD   Port SIM   Audio Jack
GPS (factory)	Qualcomm® IZat Gen 7™   A-GPS
2G (factory)	GSM 850/900/1800/1900MHz
3G (factory)	UMTS/HSPA+ 850/900/1900/2100 MHz
Audio	Built-in Speaker   Built-in Mic   Audio Jack
Camera (FRONT)	2MPx
Camera (REAR)	8MPx + Autofocus + Flash
Keyboard	On-Screen + Function keys Home   Menu   Return   ON/OFF   Volume keys

Weight   Dimensions	140mm x 220mm x 16mm   580g
Resistance	IP67   MIL-STD-810G
Sensors (factory)	Accelerometer   Orientation Sensor   Gravity Sensor   Linear Acc Sensor Magnetic Field Sensor   Gyroscope   Rotation Vestor Sensor
Certificates	CE   FCC   RoHS
Warranty	12 months

Refer to the "Technical Data" that possibility is a version of the device. To gain additional information about the product click on the "Request for information" or go to the **contact form**.



[go top...](#)





Operating Temperature	-20°C -- +60°C
Storage Temperature	-40°C -- +80°C
Relative Humidity	5% - 95% non condensing
Dust	IP6x (pył)
Water	IPx7 (water)
Max. Operating altitude	4500m (15,000 feet)
Shake-proof	1-19Hz/1.0mm   19-200Hz/1.0g
Drop	1.5m (MIL-STD-810G)



## Resistance

IP stands for Ingress Protection and is essentially a rating system developed by the International Electrotechnical Commission or the IEC. The system is now being used to classify different degrees of protection against intrusion or immersion. The IP rating is usually followed by two digits. The first indicates the level of dust-resistance, the second water resistance. Dust-resistance levels goes from 0 up to 6 while water-resistance goes from 0 to 8.

Complete protection against contact.  
Protection from infiltration of dust.

6



7

Protection against immersion.



## Screen

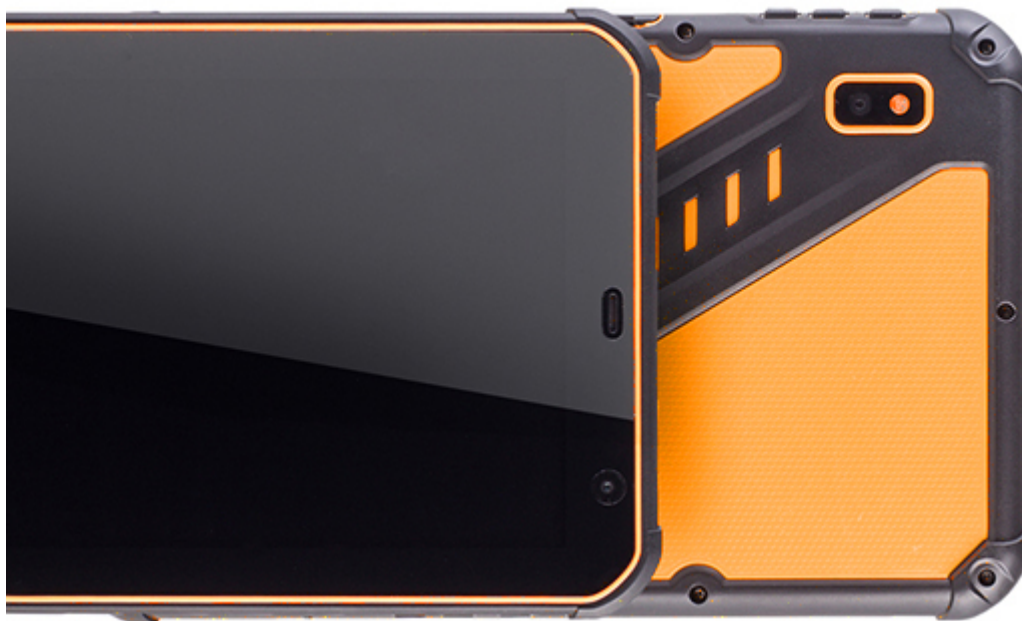
8inch 1280\*800

8 inch

1280\*800



G/G type is composed of protection glass and TP sensor glass, with mass production began in 2011. G/G type is largely applied to mobile products, public information display and various other applications.



[go top...](#)



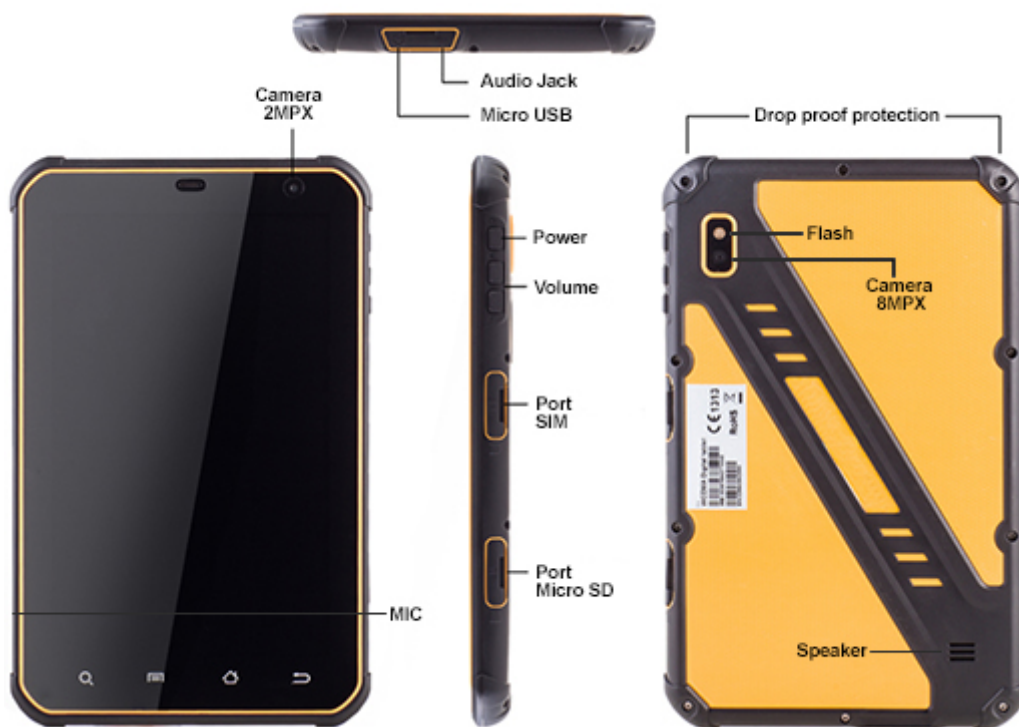
**mobilator.pl**

With 3G module, you need only insert a SIM card into a special slot and can immediately connect to the Internet. Integrated software allows you to automatically recognize and customize mobile networks. Also used in internal ST8200 module adapts automatically to transfer and network coverage.

WIFI	802.11 b/g/n
GPS	Qualcomm® IZat Gen 7™   A-GPS
Bluetooth	Bluetooth 4.0
GSM/3G	GSM 850/900/1800/1900MHz
	UMTS/HSPA+ 850/900/1900/2100MHz

The ability to make voice calls





You do not have to worry about whether you will put your old laptop into a briefcase, backpack or travel bag with Senter problem disappears forever, as it weighs only 580 and its dimensions (14 x 22 x 16cm) allow to carry it with you everywhere. With exquisite workmanship and energy efficient it is in the forefront of devices in this segment and is hit on the Europe market in the industrial segment.

**Dimensions**

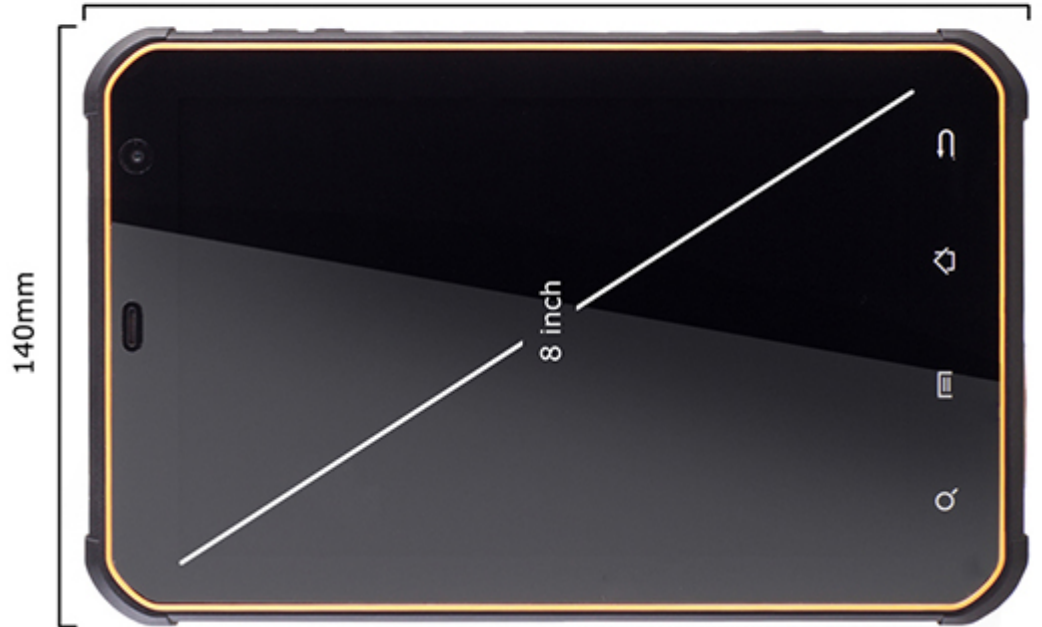
140mm x 220mm x 16mm

**Weight**

580g



220mm



[go top...](#)

[more photos in the "Photo Gallery" ...](#)

[specification of this version is available in the "Technical data" ...](#)