



Rugged Tablet MobiPad EM-I12A v.11

Category:	UMPC - Ruggedized
Manufacturer:	Mobikator
Operating System:	Android 4.4.4
Display:	10.1" (1280*800) 16:10LED IPS GORILLA GLASS 3
Brightness:	400nits
Processor:	Intel® Atom™ Processor Z3735D/Z3735F (QUAD CORE 1.33 - 1.83GHz)
Memory:	2GB DDR3L
Hard Drive:	32GB FLASH
Touch screen:	Yes - capacitive (10-points)
Durability:	IP65
Drop:	1.2m (MIL-STD-810G Method 516.6)
Shock:	MIL-STD-810G
Vibration:	MIL-STD-810G
Temperature:	Operating: -20°C -- +60°C Storage temperature: -40°C -- +80°C MIL-STD-810G
Humidity:	-----
1D barcode scanner (reader):	-----
2D barcode scanner (reader):	-----
RFID scanner (reader):	NFC (13.56MHz) reading distance - to 4cm ISO14443 A/BISO15693ISO15693ISO18092MIFARE

Other:	G-Sensor
Battery:	Li-Poly 3.7V 10000mAh
Working time on battery:	7-9 hours (depending on usage)
Fast battery replacement ability:	Yes
HotSwap battery:	No
LAN:	-----
WLAN:	802.11 a/b/g/n
Bluetooth:	Bluetooth 4.0
WAN:	Yes - WCDMA
GPS:	Unicorecomm UM220-III (GPS+Beidou)
Camera:	Front: 2MpxRear: 5Mpx
In/Out:	mini HDMIMicro-SD ReaderUSB 2.0micro USB (OTG)Docking portDC In
Optional accessories:	Docking Station1x - Charging port (device)1x - Charging port (battery)3x - USB 2.01x - RJ451x - DC InWrist StrapShoulder Strap
Docking station connector:	Yes
VESA standard – holders and mounts support:	No
COM port:	No
Magnetic card reader (MSR):	-----
Microchip card reader:	-----
Contrast:	-----
Graphics card:	Intel HD Graphic (Gen7)
Chipset:	-----
BIOS:	-----
Casing material:	-----
Flash Card Reader:	microSD
CD/DVD:	-----
Audio:	Built-in Microphone Audio Jack 2x - Speaker 0.8W/8Ω

Keyboard:	on-Screen Function keys Volume + Volume - Power Home Functional
Additional Navigation Devices :	-----
Color:	-----
Swivel Hinge:	-----
VGA out:	-----
TV Out:	-----
TV Tuner:	-----
Security:	IP65 MIL-STD-810G
Waterproof:	IP6x
Sand and dust:	IPx5
Size:	272 x 195 x 22mm - 700 (with battery)
Fanless casing:	Yes

Product from the Archive - production finished



MobiPad I12A is a new proposal 10.1 - inch tablet works with Android 4.4. The tablet has a specially designed, reinforced structure, adapted for use in harsh environmental conditions. The device works great when in the home and industrial use.



MobiPad I12A is offered with the latest quad-core Intel® Atom™ processor Z3735D / Z3735F to ensure the highest performance, low power consumption and long battery life. The tablet works with Android operating system to meet the growing requirements in industrial applications.

Processor	Intel® Atom™ Processor Z3735D/Z3735F (QUAD CORE 1.33 - 1.83GHz)
Graphics	Intel HD Graphic (Gen7)
Display	10.1" (1280*800) 16:10
Type of display	LED IPS Gorilla Glass 3 Capacitive (10-points)
LED	Power
Brightness	400nits
RAM	2GB DDR3L
ROM	32GB FLASH
Connectors	HDMI 1.4a Micro-SD Reader USB 2.0 micro USB Docking DC In
GPS (optional)	Unicorecomm UM220-III (GPS+Beidou)
Audio	Built-in Microphone Audio Jack 2x - Speaker 0.8W/8Ω
Camera	FRONT: 2Mpx
New Portable Devices NIP: 872-120-56-82 Mobile.: +48 508 235 505 e-mail: sklep@mobilator.pl <small>REAR: 5MPx</small> Account number: ALIOR BANK SA 68 2490 0005 0000 4500 2328 8078	
Battery	Li-Poly 3.7V 10000mAh

Dimensions 272*195*22mm - 700g (with battery)

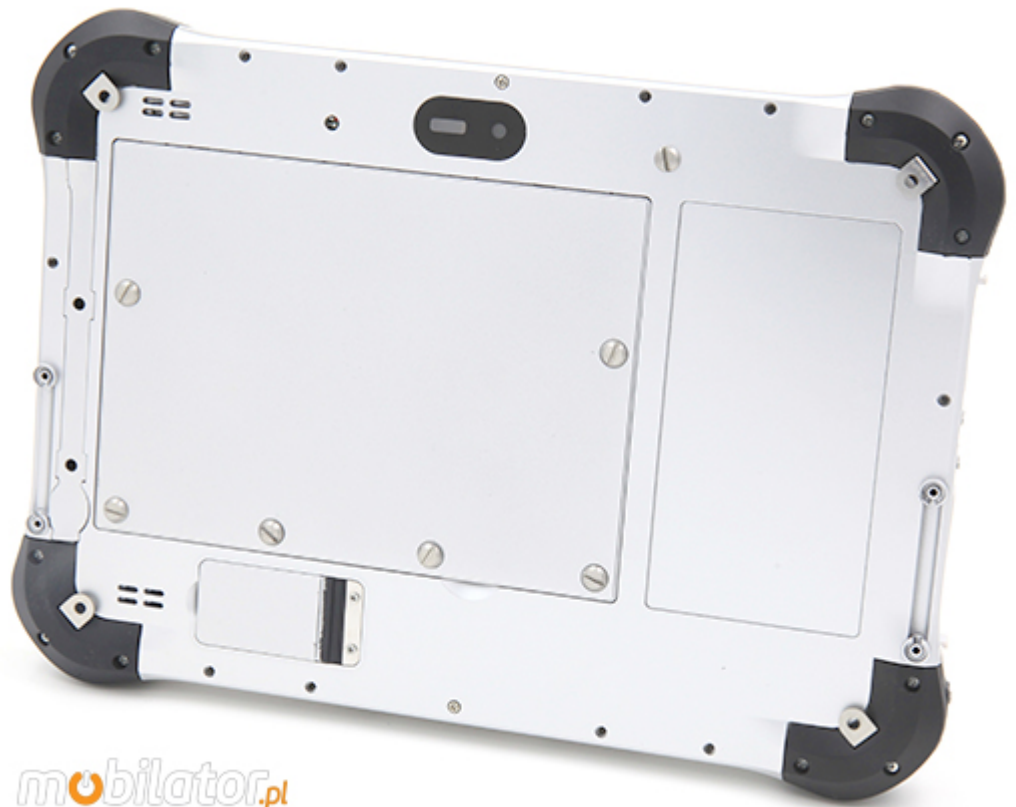
Resistance IP65

Readers (optional) **3G | NFC | 1D Scanner | 1D/2D Scanner | Fingerprint**

Sensors (factory) G-Sensor

Warranty 12 months

Refer to the "Technical Data" overlap - what possibility have subsequent versions of the devices. To gain additional information about the product click on the "Ask about the product" or go to the **contact form**.



Select a version for each other

Select a version tailored to your needs. Clicking on the hardware number configurations will redirect you to the product with parameters listed below. At the customer's request can be created configurations which are not available in the offer. Detailed parameters are available in the **"Technical Data"**.



NFC	-	-	-	-	✓	-	-	-	-	-	✓	✓
1D Motorola (CCD)	-	-	-	-	-	✓	✓	-	-	-	-	✓
2D Motorola (CMOS)	-	-	-	-	-	-	-	✓	✓	-	-	-
Fingerprint	-	-	-	-	-	-	-	-	-	✓	-	-

[go top...](#)

Barcode Scanner (optional)

Quick and accurate identification of the object relieves the warehouseman and does not create a bottleneck in logistics processes. 2D barcode reader allows you to read, decode and send to your data stored in the bar code. With dynamic scanning capabilities and wide range of reading MobiPad device and I12A quickly and accurately retrieves the data, which helps to increase the rate and efficiency.



Model	Motorola SE655	Motorola SE4710
Type of scanner	1D	1D/2D
Display type	CCD	CMOS



NFC (optional)

Near field communication (NFC) is a set of ideas and technology that enables smartphones and other devices to establish radio communication with each other by touching the devices together or bringing them into proximity to a distance of typically 10 cm (3.9 in) or less.

	NFC
Frequency	13.56 MHz
Reading distance	to 4 cm
Supported standards	ISO14443 A/B
	ISO15693
	ISO18092
	MIFARE



Standards

In terms of device ruggedness, the I12A can withstand a 4-foot drop, and with IP65 sealing, where the first digit "6" means the device is dustproof and the second digit "5" means that the device has the ability to handle low pressure water jets from all directions. The tablet can operate in temperature range of -20° to 60°C, optimized for most industrial deployments. I12A is a sharp looking, sturdy and powerful device that can hold up well against use in harsh environment with its industrial grade rugged design.

Operating temperature	-20°C -- +60°C
Storage temperature	-40C -- +80°C
Dust	IP6x MIL-STD 810G 510.5
Water	IPx5 IEC529 (JIS C0920) MIL-STD810G 506.5-III
Drop	MIL-STD-810G Method 516.6 - 4ft./1.2m

MIL-STD 810G

Durability is one of the most important factors to consider when choosing mobile solutions, which is why Getac ensures that its fully rugged units operate even when dropped onto concrete, or used in harsh environmental conditions such as heat and cold, dust and rain. Rigorous tests that pass Getac products ensures that our customers receive products that meet the highest standards of durability and reliability. Getac ensures compliance with the most rigorous standards in this area - **MIL-STD 810G** according to test its products. This standard, set by the US military, is the most widely used international standard.

MIL-STD 810G covers a broad range of tests used to measure equipment reliability:

High Temperature: MIL-STD 810G Method 501.5

This test procedure determines computer's operating performance during exposure to high temperatures. This test differs from the standard test that the computer is evaluated under conditions of elevated temperature.

Low Temperature: MIL-STD 810G Method 502.5

This test procedure determines computer's operating performance during exposure to low temperature. This test differs from the standard test that the computer is evaluated under conditions of low temperature.

Changing Temperatures: MIL-STD 810G Method 503.5

Research on temperature changes is to determine whether the components can withstand sudden changes in the surrounding temperature and do not cause of damage or deterioration in performance.

In this study they are to establish two goals: whether the test item can still be safely operated, and whether it meets the requirements, after being exposed to sudden changes in ambient temperature.

Rain: MIL-STD 810G Method 506.5

Tested rain is conducted in order to determine the resistance to rain and wind-driven rain.

The collapse of MIL-STD 810G Method 516.6

Tests of free fall (shock) are performed to ensure that equipment can withstand relatively infrequent, non-repetitive shocks and vibrations encountered during handling, transportation and collisions.

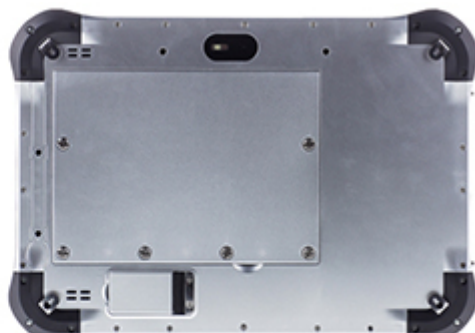
New Portable Devices | NIP: 872-120-56-82 | Mobile.: +48 508 235 505 | e-mail: sklep@mobilator.pl

Account number: ALIOR BANK SA 68 2490 0005 0000 4500 2328 8078



Winmate describes the M101B tablet as "rugged" and with its corner protection it certainly looks much tougher than all those Barbie-thin and fragile consumer tablets. MobiPad's experience in rugged mobile computing, we assume those are just partial specs.

WIFI	802.11 a/b/g/n
GPS (optional)	Unicomrecomm UM220-III (GPS+Beidou)
Bluetooth	Bluetooth 4.0
3G (optional)	WCDMA





Real-time data access to the right information is very important to mobile users. I12A offers 3G, GPS, WiFi 802.11 a/b/g/n, Bluetooth 4.0 which enable users to get connect in the way that best suits their needs. With built-in 5.0 Mega Pixels camera on rear side, users can capture photos, videos, documents instantly, or utilize the front 2.0 Mega Pixel camera for application such as user self video recording, or video communication.



Dimensions

272 x 195 x 22mm

Weight

700g



[go top...](#)

Docking Station

The docking station (optional) enables simultaneous battery charging device and the battery itself. When you dock your device will be extended to additional ports located directly at the station. You can buy an accessory in the "Accessories" or direct contact with the shop.



Number of ports

2x - charging ports

Available ports

3x - USB 2.0 | RJ45 | DC In

Wrist Strap

Working comfort with the device can help you by buying durable strap (optional). It provides a stable position or facilitate safe movement on the tablet.



