



Rugged Tablet Winmate R10IA8M v.8

<b>Category:</b>	UMPC - Ruggedized
<b>Manufacturer:</b>	Winmate
<b>Operating System:</b>	Windows XP Eng Embedded
<b>Display:</b>	10.4" (800x600)
<b>Brightness:</b>	350nit
<b>Processor:</b>	Intel® ATOM™ N270 1.6GHz or Intel® Atom™ Processor D2700 (1M Cache, 2.13 GHz)
<b>Memory:</b>	1GB DDRII (Option 2GB)
<b>Hard Drive:</b>	2.5" 160GB HDD or 16GB SSD
<b>Touch screen:</b>	Yes
<b>Durability:</b>	MIL-810F / Full Rugged
<b>Drop:</b>	MIL-STD 810F Method 516.5 / 1.20m
<b>Shock:</b>	MIL-STD 810F Method 516.5
<b>Vibration:</b>	MIL-STD 810F Method 514.5
<b>Temperature:</b>	-20 °C ~ 60 °C

<b>Humidity:</b>	10 - 90%
<b>1D barcode scanner (reader):</b>	No
<b>2D barcode scanner (reader):</b>	No
<b>RFID scanner (reader):</b>	No
<b>Other:</b>	Fanless / Standard VESA
<b>Battery:</b>	6 cell 5200mAh Li-Ion
<b>Working time on battery:</b>	5h
<b>Fast battery replacement ability:</b>	Yes
<b>HotSwap battery:</b>	No
<b>LAN:</b>	Yes
<b>WLAN:</b>	Yes WiFi b/g/n
<b>Bluetooth:</b>	Yes Bluetooth 2.1+EDR
<b>WAN:</b>	No
<b>GPS:</b>	Tak
<b>Camera:</b>	No
<b>In/Out:</b>	2 x USB 2.0, 1 x Line in, 1 x Line out, 1 x Reset button, 1 x power jack, 1 x LAN, 1 x VGA, 1 x SD card slot, 1 x SIM card slot, 1 x COM port, 1 x docking connector
<b>Optional accessories:</b>	Car AC, Docking Station, Vehicle Mount Kit VESA, Vehicle Mount Kit, Carrying Handle, Shoulder Handle, Carry Bag, Car Mounting
<b>Docking station connector:</b>	Yes
<b>VESA standard – holders and mounts support:</b>	Yes
<b>COM port:</b>	Yes
<b>Magnetic card reader (MSR):</b>	No
<b>Microchip card reader:</b>	No
<b>Contrast:</b>	500:1
<b>Graphics card:</b>	Integrated
<b>Chipset:</b>	Intel 945GSE + ICH7M
<b>BIOS:</b>	AMI 4Mbit Flash

<b>Casing material:</b>	aluminium - magnesium
<b>Flash Card Reader:</b>	Yes SD
<b>CD/DVD:</b>	No (optional USB
<b>Audio:</b>	2 Speakers stereo
<b>Keyboard:</b>	No
<b>Additional Navigation Devices :</b>	No
<b>Color:</b>	Graphit
<b>Swivel Hinge:</b>	No
<b>VGA out:</b>	Yes
<b>TV Out:</b>	No
<b>TV Tuner:</b>	No
<b>Security:</b>	Gum corner
<b>Waterproof:</b>	IP 54
<b>Sand and dust:</b>	IP 54
<b>Size:</b>	311 x 232 x 45 mm / 2.5 Kg / VESA
<b>Fanless casing:</b>	Yes

**Product from the Archive - production finished**



## Menu

Description

Functionality

Use

Resistance standard

Certificate



Founded in 1996, **Winmate** has achieved a fine reputation as a developer and manufacturer of rugged computers and industry panel LCD. Due to our product positioning in the high-tech and niche market, we have won many honors in computer product evaluation conducted throughout the world.

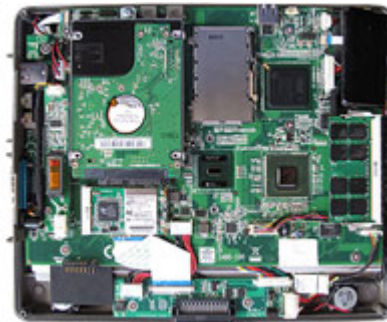


**Winmate** PCs are an ideal gadget for mobile professionals. They enable you to take notes quickly and work in close spaces. Rugged Tablet PCs provide even more benefits for mobile professionals. **R10I** is fully rugged and is certified for both military and industrial ruggedization standards.

## Description

### Guarantee

Winmate corporation give 2 years standard guarantee.  
Optional possibility 1 year or 3 years.





### Case and size

Integrated WiFi and Bluetooth solution, LCD (touchscreen and digitizer). In addition, IP54 certified design with a full aluminium-magnesium alloy case, helps to ensure that the **R10I** will stand up to the most rigorous environments.

### Communications

Winmate **R10I** supports the state of art wireless network feature. It basically supports the wireless LAN 802.11, Bluetooth has built-in 3G HSDPA module and GPS solution. The great expansion of WiFi technologies to wireless connect to the Internet both in professional and domestic settings through the public or private hot-spots, make your **R10I** an inseparable resource for your daily activities. You can enjoy the use of various wireless networks and wireless Internet to your heart's content with UMPC **R10I** at any time and place where the wireless Internet environment is established.



## Processor and chipset



**R10I** is supported Intel Atom 1.6GHz processor/Intel 945GSE + ICH7M Chipset, thanks to what it is unusually energy-saving, keeping near this large efficiency of work, what proof system is Windows XP / 7 which be dedicated for this device.

[list of content...](#)

[go top...](#)

## Screen

**R10I** ships standard with a transfective sunlight viewable 10.4" LED 800x600 screen, ideal for high ambient light conditions standard 350nits, contrast 500:1. A built-in touch screen allows finger-touch inputs directly on the screen or the use of the stylus pen for data input capability.



### Function Hot-Swap:



Everyone wants as much processing speed as possible, especially in mobile units. The battery life of our Rugged Tablet PC has been extended by our new function to change the second battery without shutting down your system. We believe it will bring immense benefits and reliability in your mobile application.

The Hot-swap second battery is secured by two large Philips screws ensuring the battery will never loosen. It has Li-Ion 2600 mAh which supports half the operating time of the main battery.

### Option accessories

**Winmate** delivers our all new Ruggedized Tablet products with two kind of series: one is Rugged Mobile PC Series for a Panel PC with battery charging solution, other series is Rugged Tablet PC Series with totally portable design with hot-swap battery for outdoor use.



Car AC



Docking Station



Vehicle Mount Kit VESA



Vehicle Mount Kit



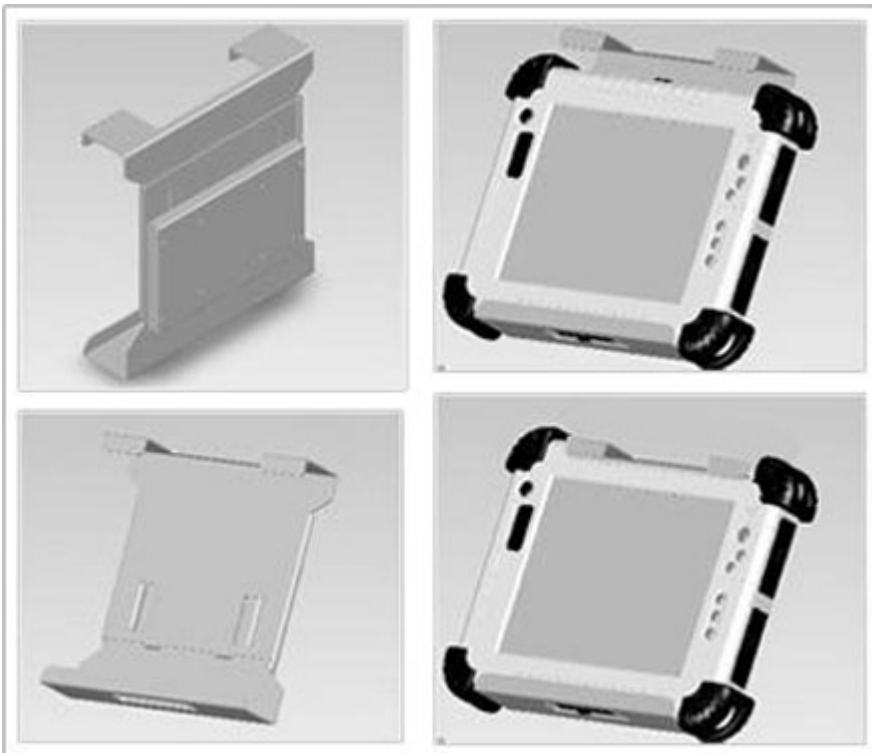
Carrying Handle



Shoulder Handle



Carry Bag



Car holder

## Functionality



#### **Ergonomics:**

- Designed with about customer.
- Comfortable strong handle be irreplaceable in transportation.

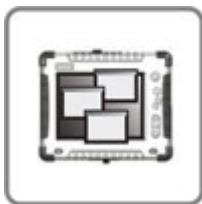
[list of content...](#)

[go top...](#)



#### **Mobility:**

- WiFi 802.11,
- Bluetooth,
- GPS.



#### **Software:**

- Programmable function HotKey buttons.
- Programmable application HotTab SW
- Support: Windows XP, 7



#### **Cooling:**

- Fanless.



#### **Durability:**

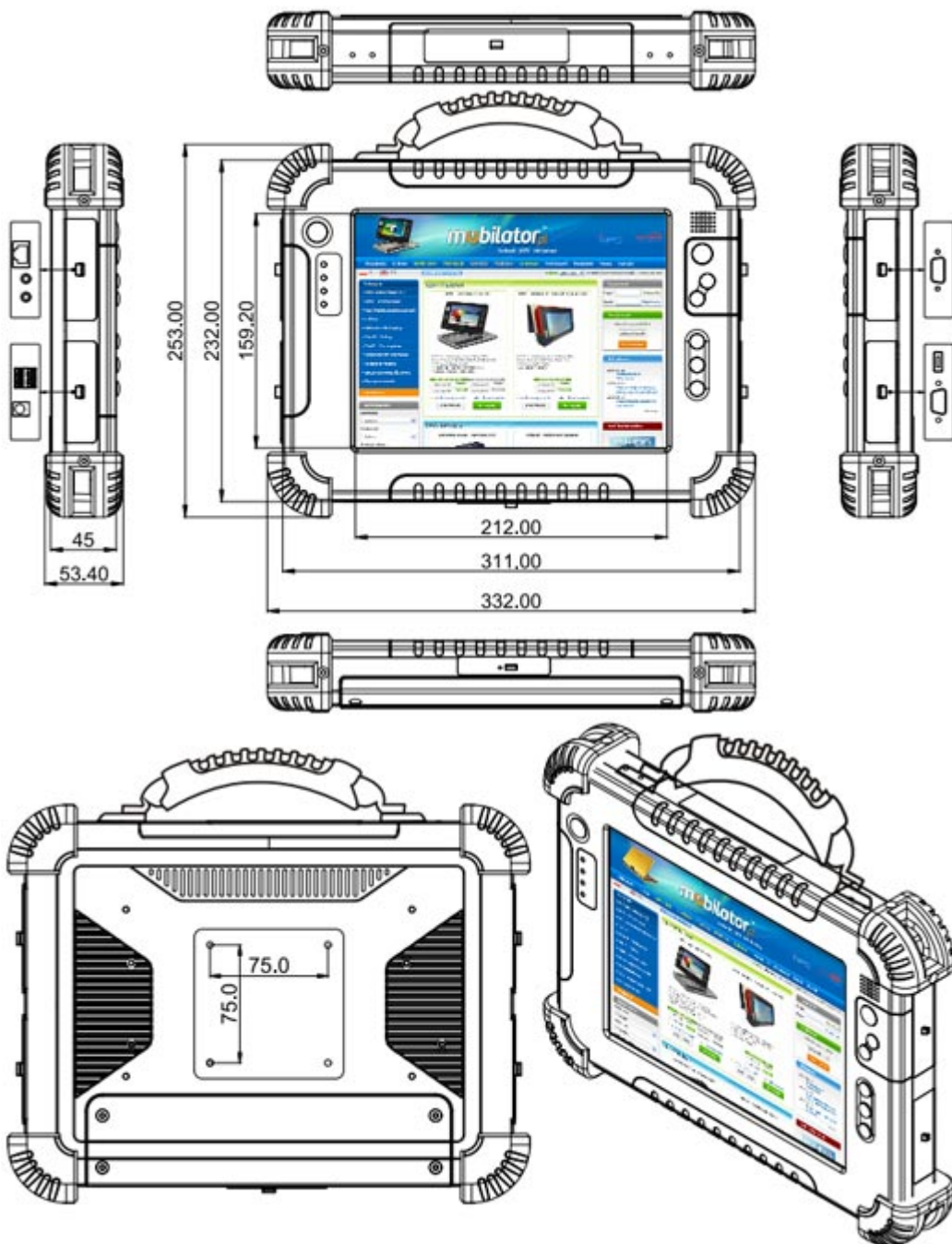
- Full Rugged aluminium-magnesium alloy case.



**Screen:**

- 10.4" LED 800x600 touch screen, ideal for high ambient light conditions standard 350nits, contrast 500:1





## Use

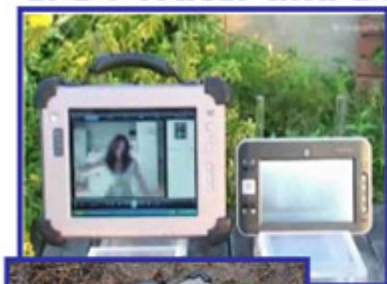
The **R101**, rugged tablet is ideal solution for Government; industrial/commercial customers who are interested in the ability to work in rough environments yet maintain productivity without the risk of data or performance losses.

# Bluetooth Class B up to 100m CANBUS

Sunlight Readable  
IP54 Water and Dust Proof



**Vehicle Examination**



**Outdoor Application**



**Military**

Complies with  
MIL 810F Standard



**Logistics**

1D/2D  
Barcode  
Reader



**Medical Institution**

Medical Certificate  
UL60601-1



[list of content...](#)

[go top...](#)

**Resistance standard**

The following is a top-level introduction to US Military standard **MIL-STD-810**, used to define the testing methodology for, and results required for acceptance of, rugged equipment.

MIL-STD-810 is a series of performance and manufacturing guidelines set by the US Department of Defense for military and commercial equipment and applications. These guidelines specify allowable parts and environmental condition ranges in which a device must be able to operate to meet compliance.

MIL-STD-810 is a generally accepted standard of ruggedisation testing and compliance for mobile computers and equipment.

The MIL-STD-810 test method is used to generate confidence in the environmental worthiness and overall durability of 'material system' design. The testing process follows guidelines, which include program documentation, program roles, test standards, and laboratory test method guidelines for all categories.

The laboratory test methods are broken down into 24 categories and thereafter procedures (specific tests or levels) appropriate to the environment in which the equipment is expected to be used. The compliance test categories are shown overleaf.



#### **MIL-STD 461E**

Requirements for the Control of Electromagnetic Interference Characteristics of Subsystems and Equipment.

#### **Vibration: MIL-STD 810F Metod 514.5**

#### **Shock: MIL-STD 810F Metod 516.5**



[list of content...](#)

[go top...](#)

# Certificate

**CE FC Class B**



**Dictionary:**

**Nit** - 1Nit = 1Candela - The candela is the luminous intensity, in a given direction, of a source that emits monochromatic radiation of frequency  $540 \times 10^{12}$  hertz and that has a radiant intensity in that direction of  $1/683$  watt per steradian. The definition describes how to produce a light source that (by definition) emits one candela. Such a source could then be used to calibrate instruments designed to measure luminous intensity.

The candela is sometimes still called by the old name candle, such as in foot-candle and the modern definition of candlepower.