



Rugged Tablet Winmate R12I88M v.2

Category:	UMPC - Ruggedized
Manufacturer:	Winmate
Operating System:	Windows XP Eng Embedded
Display:	12.1" (1024x768)
Brightness:	450nit
Processor:	Intel® Core 2 Duo U7500 1.06GHZ
Memory:	1GB DDRII
Hard Drive:	160GB HDD
Touch screen:	Yes
Durability:	MIL-810F / Full Rugged
Drop:	MIL-STD 810F Method 516.5 / 1.20m
Shock:	MIL-STD 810F Method 516.5
Vibration:	MIL-STD 810F Method 514.5
Temperature:	-20 °C ~ 60 °C
Humidity:	10 - 90%
1D barcode scanner (reader):	No

2D barcode scanner (reader):	No
RFID scanner (reader):	No
Other:	Fanless / Standard VESA
Battery:	6 cell 5200mAh Li-Ion
Working time on battery:	3.5h
Fast battery replacement ability:	Yes
HotSwap battery:	No
LAN:	Yes 10/100/1000 LAN
WLAN:	Yes b/g
Bluetooth:	Yes
WAN:	No
GPS:	No
Camera:	No
In/Out:	1 x LAN ,2 x USB 2.0,1 x Audio out, Micro-in Jack, 1 x Power Input Jack, 1x Reset button, 1 x COM, 1 x VGA,1 xUSB2.0, 1 x PCI Express Slot
Optional accessories:	Car AC, Docking Station, Vehicle Mount Kit VESA, Vehicle Mount Kit, Carrying Handle, Shoulder Handle, Carry Bag, Car Mounting
Docking station connector:	Yes
VESA standard – holders and mounts support:	Yes
COM port:	Yes
Magnetic card reader (MSR):	No
Microchip card reader:	No
Contrast:	700:1
Graphics card:	Integrated
Chipset:	Intel® 945GME
BIOS:	AMI 4Mbit Flash
Casing material:	aluminium - magnesium
Flash Card Reader:	No

CD/DVD:	No (optional USB
Audio:	2 Speakers stereo
Keyboard:	No
Additional Navigation Devices :	No
Color:	Graphit
Swivel Hinge:	No
VGA out:	Yes
TV Out:	No
TV Tuner:	No
Security:	Gum corner
Waterproof:	IP 54
Sand and dust:	IP 54
Size:	311 x 232 x 52 mm / 3 Kg / VESA
Fanless casing:	Yes

Product from the Archive - production finished

WINMATE



Menu

Description

Functionality

Use

Resistance standard

Certificate



Founded in 1996, **Winmate** has achieved a fine reputation as a developer and manufacturer of rugged computers and industry panel LCD. Due to our product positioning in the high-tech and niche market, we have won many honors in computer product evaluation conducted throughout the world.

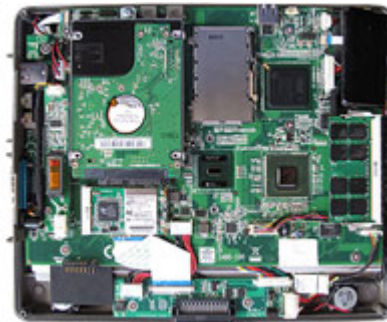


Winmate PCs are an ideal gadget for mobile professionals. They enable you to take notes quickly and work in close spaces. Rugged Tablet PCs provide even more benefits for mobile professionals. **R12I** is fully rugged and is certified for both military and industrial ruggedization standards.

Description

Guarantee

Winmate corporation give 2 years standard guarantee.
Optional possibility 1 year or 3 years.



Aluminum- magnesium housing



Protection rubber on corner

Dust and water proof – IP65

Case and size

Integrated WiFi and Bluetooth solution. In addition, IP54 certified design with a full aluminium-magnesium alloy case, helps to ensure that the **R12I** will stand up to the most rigorous environments.

Communications

Winmate **R12I** supports the state of art wireless network feature. It basically supports the wireless LAN 802.11 b/g, Bluetooth has built-in optional 3G HSDPA module and GPS solution. The great expansion of WiFi technologies to wireless connect to the Internet both in professional and domestic settings through the public or private hot-spots, make your **R12I** an inseparable resource for your daily activities. You can enjoy the use of various wireless networks and wireless Internet to your heart's content with UMPC **R12I** at any time and place where the wireless Internet environment is established.



Processor and chipset



R12I is supported Intel Core 2 Duo 1.06GHz processor, thanks to what it is unusually energy-saving, keeping near this large efficiency of work, what proof system is Windows XP / 7 which be dedicated for this device.

[list of content...](#)

[go top...](#)

Screen

R12I ships standard with a transfective sunlight viewable 12.1" LED 1024x768 screen, ideal for high ambient light conditions standard 450nits, contrast 700:1. A built-in touch screen allows finger-touch inputs directly on the screen or the use of the stylus pen for data input capability.



Function Hot-Swap:



Everyone wants as much processing speed as possible, especially in mobile units. The battery life of our Rugged Tablet PC has been extended by our new function to change the second battery without shutting down your system. We believe it will bring immense benefits and reliability in your mobile application.

The Hot-swap second battery is secured by two large Philips screws ensuring the battery will never loosen. It has Li-Ion 2600 mAh which supports half the operating time of the main battery.

Option accessories

Winmate delivers our all new Ruggedized Tablet products with two kind of series: one is Rugged Mobile PC Series for a Panel PC with battery charging solution, other series is Rugged Tablet PC Series with totally portable design with hot-swap battery for outdoor use.



Car AC



Docking Station



Vehicle Mount Kit VESA



Vehicle Mount Kit



Carrying Handle



Shoulder Handle



Carry Bag

Functionality





Ergonomics:

- Designed with about customer.
- Comfortable strong handle be irreplaceable in transportation.

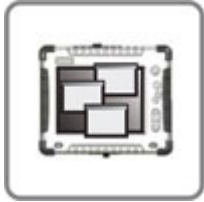
[list of content...](#)

[go top...](#)



Mobility:

- WiFi 802.11b/g,
- Bluetooth,



Software:

- Programmable function HotKey buttons.
- Programmable application HotTab SW
- Support: Windows XP, 7



Cooling:

- Fanless.



Durability:

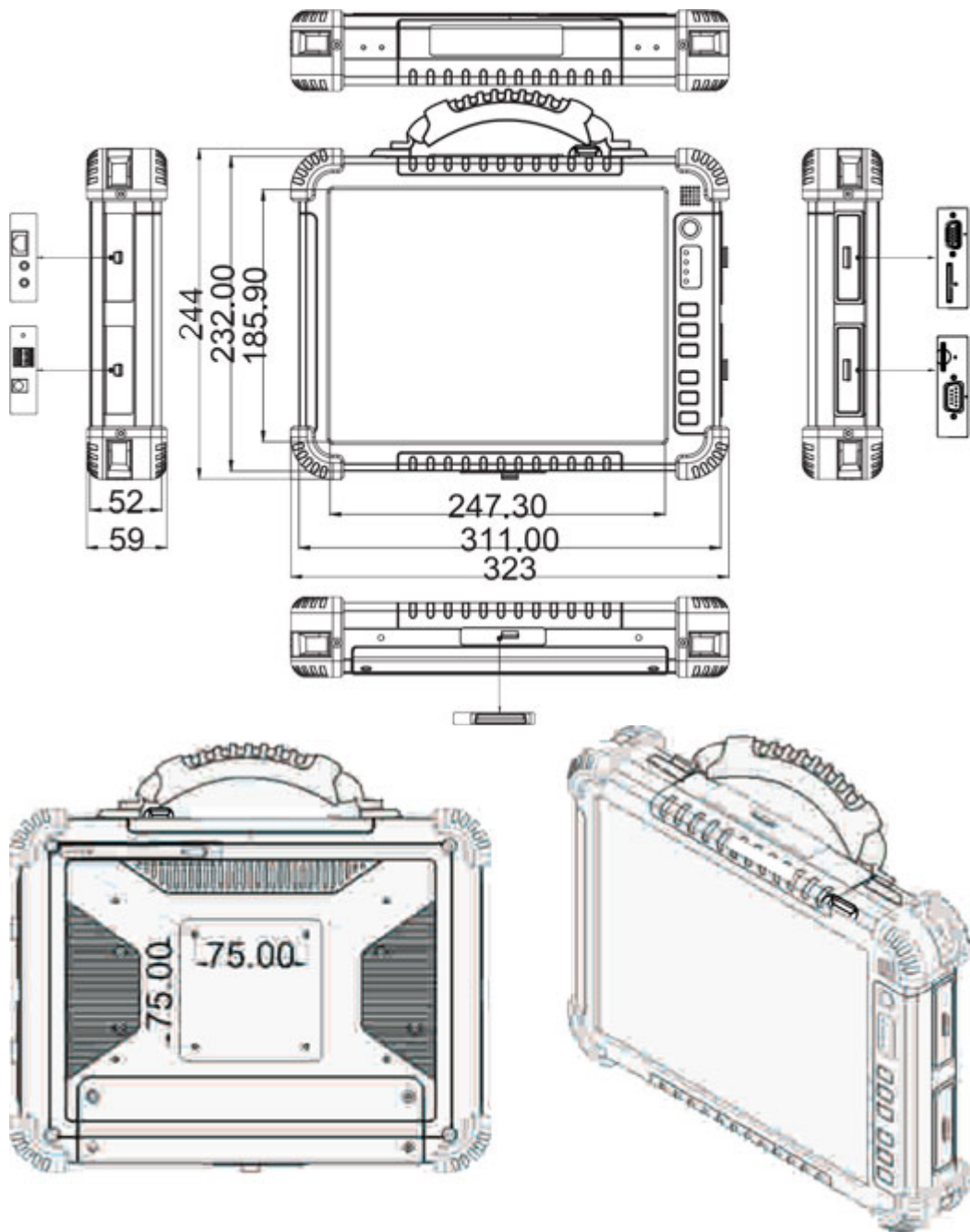
- Full Rugged aluminium-magnesium alloy case.



Screen:

- 12.1" LED 1024x768 touch screen, ideal for high ambient light conditions standard 450nits, contrast 700:1





Use

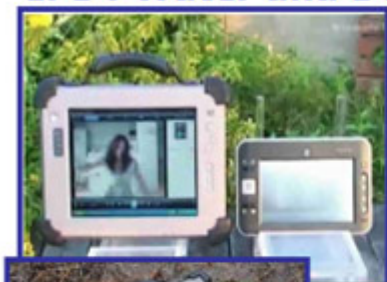
The **R12I**, rugged tablet is ideal solution for Government; industrial/commercial customers who are interested in the ability to work in rough environments yet maintain productivity without the risk of data or performance losses.

Bluetooth Class B up to 100m CANBUS

**Sunlight Readable
IP54 Water and Dust Proof**



Vehicle Examination



Outdoor Application



Military

**Complies with
MIL 810F Standard**



Logistics

**1D/2D
Barcode
Reader**



Medical Institution

**Medical Certificate
UL60601-1**



[list of content...](#)

[go top...](#)

Resistance standard

The following is a top-level introduction to US Military standard **MIL-STD-810**, used to define the testing methodology for, and results required for acceptance of, rugged equipment.

MIL-STD-810 is a series of performance and manufacturing guidelines set by the US Department of Defense for military and commercial equipment and applications. These guidelines specify allowable parts and environmental condition ranges in which a device must be able to operate to meet compliance.

MIL-STD-810 is a generally accepted standard of ruggedisation testing and compliance for mobile computers and equipment.

The MIL-STD-810 test method is used to generate confidence in the environmental worthiness and overall durability of 'material system' design. The testing process follows guidelines, which include program documentation, program roles, test standards, and laboratory test method guidelines for all categories.

The laboratory test methods are broken down into 24 categories and thereafter procedures (specific tests or levels) appropriate to the environment in which the equipment is expected to be used. The compliance test categories are shown overleaf.



MIL-STD 461E

Requirements for the Control of Electromagnetic Interference Characteristics of Subsystems and Equipment.

Vibration: MIL-STD 810F Metod 514.5

Shock: MIL-STD 810F Metod 516.5



[list of content...](#)

[go top...](#)

Certificate

CE FC Class B



Dictionary:

Nit - 1Nit = 1Candela - The candela is the luminous intensity, in a given direction, of a source that emits monochromatic radiation of frequency 540×10^{12} hertz and that has a radiant intensity in that direction of $1/683$ watt per steradian. The definition describes how to produce a light source that (by definition) emits one candela. Such a source could then be used to calibrate instruments designed to measure luminous intensity.

The candela is sometimes still called by the old name candle, such as in foot-candle and the modern definition of candlepower.