



Strengthened Industrial Computer with a dedicated card graphics Nvidia GT730 and M.2 SSD - MiniPC with BOX PSO- 1030 v. 8.1

<b>Category:</b>	MiniPC Industry
<b>Manufacturer:</b>	Mobikator
<b>Supported OS:</b>	Windows: 8/8.1/10   Linux
<b>Installed OS:</b>	-----
<b>Chipset:</b>	Intel H110
<b>CPU Support:</b>	Intel Core i5 / i7 - Socket LGA1151
<b>Installed CPU:</b>	Intel Core i5 7400 (4x 3.00GHz) 6MB SmartCache
<b>Graphic Card:</b>	Intel HD Graphics 630   Nvidia GeForce GT1030
<b>Memory Support:</b>	DDR4 SO-DIMM (max. 32GB)
<b>Installed Memory:</b>	<b>32GB</b>
<b>Storage (HDD) Support:</b>	SSD / HDDmSATA / SATA / M.2
<b>Installed Storage (HDD):</b>	<b>2TB HDD (5400 RPM)256GB SSD M.2</b>
<b>IP Norm:</b>	-----
<b>Temp:</b>	-10°C — 50°C
<b>Storage temperature:</b>	-20°C — 70°C
<b>Humidity:</b>	5% ~ 95%
<b>Others:</b>	Color Black

<b>LAN:</b>	1x Realtek RTL8111F Gigabit LAN
<b>Wireless LAN card:</b>	Yes
<b>3G:</b>	-----
<b>Bluetooth:</b>	Yes
<b>Rear Panel (ports):</b>	DC19VOPS JAE TX25
<b>Front Panel (ports):</b>	Power ONDisplayPortHDMIAudioMic2x USB 2.03x USB 3.0LAN
<b>Expansion:</b>	-----
<b>Power:</b>	19V
<b>Watch Dog Timer:</b>	Yes
<b>CD/DVD Drive:</b>	-----
<b>TV Tuner:</b>	-----
<b>Dimensions:</b>	195mm x 180mm x 42.5mm
<b>Fanless:</b>	Nie
<b>Weight:</b>	1800g

**5 849,81 zł**

net price: 4 755,94 zł

## MiniPC zBOX-PSO-1030



### TECHNICAL SPECIFICATION

## RESISTANCE AND DURABILITY

## CONNECTIVITY AND COMMUNICATION

## DEVICE APPLICATION

## AVAILABLE VERSIONS

The robust mini Industrial Computer zBOX-PSO-1030 is a device designed for all industrial and non-continuous applications requiring continuous operation - 24 hours, 7 days a week.



### Small dimensions

The compact housing means that the Mini PC will fit wherever you need it and is easy to carry.



### Lightweight design

The computer's weight does not exceed 2.0kg, so it can be conveniently carried in a bag or backpack.



### Efficient components

The Intel Core i5-7400 quad-core CPU provides very good device performance.



### Wireless network

The mini PC can be connected to nearby wireless networks by equipping it with an Wi-Fi module.



### Data Storage

The large disk capacity allows to store and archiving important user data.



### Fan Cooling

The use of a fan in the Mini PC ensures adequate cooling of the processor.

\* Optional equipment, available only in other versions of the device.

[go](#)

# SPECIFICATION

## Performance

Processor	Intel Core i5 7400 (4x 3.00 GHz) LGA1151
Graphics card	Intel HD Graphics 630 & Nvidia GT-1030
Operating system	Support: Windows 8/8.1/10   Linux
RAM	32GB DDR4
Drive	HDD: 2TB (5400 rpm ) SSD M.2 - 2280: 256GB

## Interfaces

Connectivity	Wi-Fi LAN - 1x RTL8111F Gigabit Ethernet
Front panel	Power button   Display-Port   HDMI   1x Audio   1x Mic 2x USB 2.0   4x USB 3.0   1x LAN   1x RS-232 (Optional)
Rear panel	Power connector - DC19V   1x OPS JAE TX25
<b>Other</b>	
Available colors	Black
Dimensions	195mm x 180mm x 42,5mm
Weight	1.80kg

\* Optional equipment, available only in other versions of the device.

## EFFICIENT PROCESSOR

The industrial computer zBOX-PSO-1030 uses a very efficient Intel Core i5-7400 processor model. Inside it there are four cooperating cores enabling more efficient processing of many tasks at the same time. The shared SmartCache memory, which has a capacity of up to 6MB, uses multi-level hierarchy is dynamically allocated to each processor core depending on the load. This reduced the average access time to the main storage.



# 7<sup>TH</sup> GEN INTEL<sup>®</sup> CORE<sup>™</sup> PROCESSORS

EFFICIENT GRAPHIC

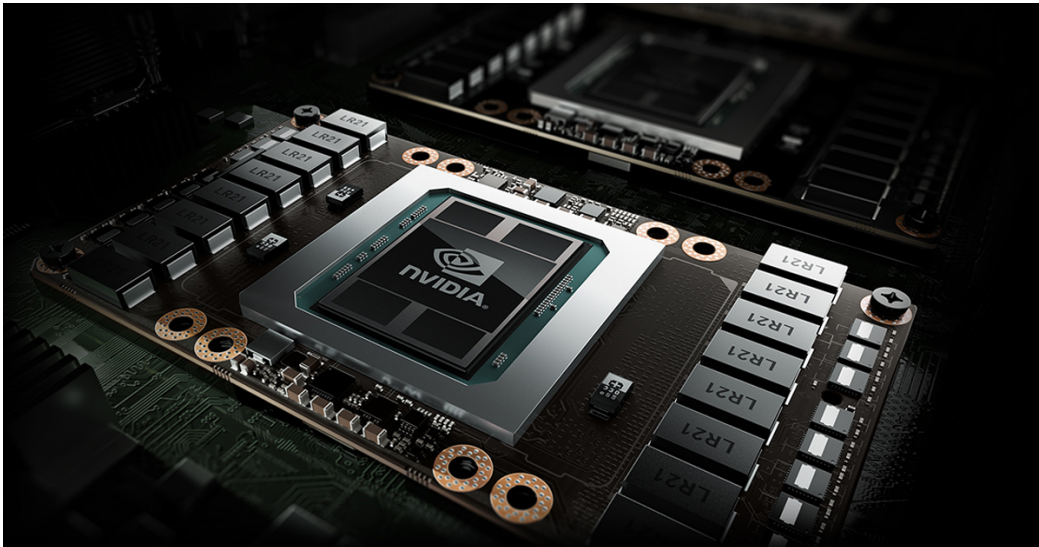
The industrial computer zBOX-PSO-1030 uses a very efficient GPU model from NVIDIA. On the motherboard there is a graphic card GT1030 with a memory capacity of 2GB and type GDDR5, which enables very efficient processing of many precise tasks related to graphic processing of digital images in graphic programs such as: Adobe Photoshop, GIMP, CorelDraw, Inkscape or AutoCAD. The card's memory uses a multi-level rendering hierarchy, it is dynamically allocated to the core graphics processor depending on the load.

## TABLE WITH SPECIFICATION

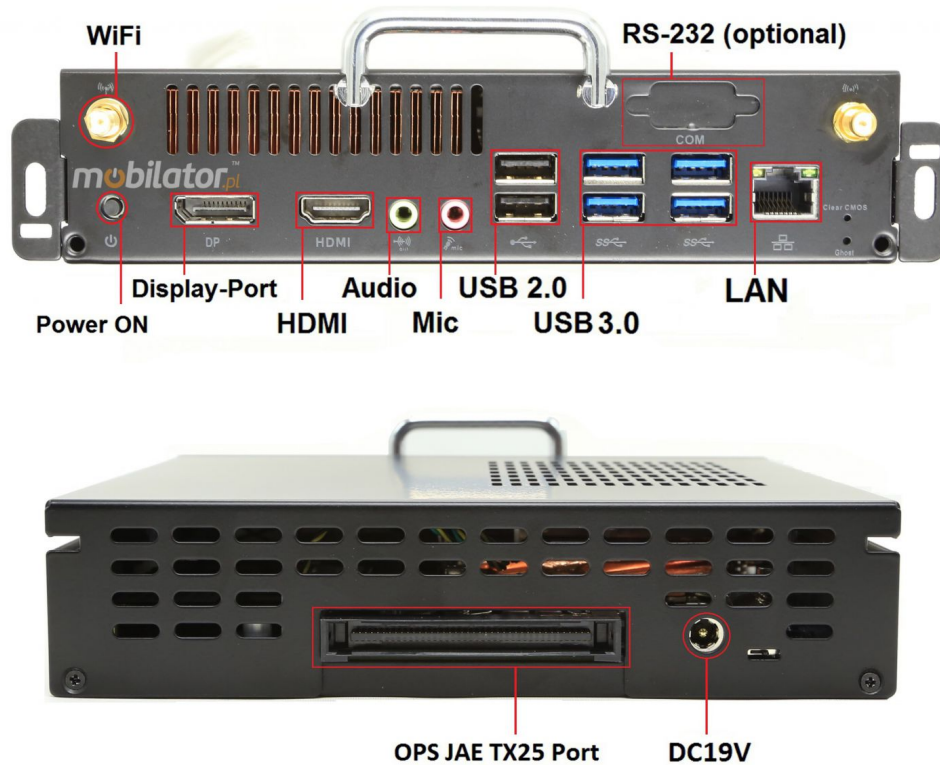
NVIDIA GeForce GT1030	
Generation	Pascal 14nm
Graphic layout	Pascal GP108
Stream processors	384
Texture units	24
Rasterizing units	8
Core clock	1227 / 1468 MHz

## NVIDIA GeForce GT1030

Computing power	1,13 TFLOPS
Video memory	2GB
Speed memory bus	64-bit
Memory clock	6008MHz
Memory type	GDDR5
Memory bandwidth	48 GB/s



### CONNECTORS / INTERFACES



## M.2 PORT

Industrial computer zBOX-PSO-1030 uses the M.2 connector to support very fast SSDs just on the M.2 connector. These drives offer higher performance than the SATA III and mSATA standard. Mobilator offers the M.2 SSD with 128GB, 256GB and 512GB of capacity.

Comprasion table for disks speed

Hard drive HDD	Read: 170MB/s   Write: 140MB/s
Disk SSD 2.5"	Read: 560MB/s   Write: 530MB/s
Disk SSD M.2 2280 128GB	Read: 1550 MB/s   Write: 530MB/s
Disk SSD M.2 2280 256GB	Read: 1650MB/s   Write: 950 MB/s

## Comprasion table for disks speed

Disk SSD M.2 2280 512GB

Read: 1650MB/s | Write: 1000MB/s



Port M.2

## DIMENSIONS





Detailed device specification is available in the "[Technical data](#)" tab.

## FAN COOLING

The industrial Mini PC uses a proven cooling system, based only on solid elements, mainly heat sinks. The system uses the phenomenon of metals passing thermal energy into the environment through openings in the housing. This solution provides better cooling in relation to passive cooling.

[go up...](#)

# RESISTANCE

## TEMPERATURES

zBOX-PSO-103 is designed for continuous operation in both very low and high temperatures ranging from  $-10^{\circ}\text{C}$  to  $50^{\circ}\text{C}$ . If the device is switched off, it can already handle temperatures in the range of  $-20^{\circ}\text{C}$  to  $70^{\circ}\text{C}$ .



Work temp.	-10°C — 50°C
Storage temp.	-20°C — 70°C
Humidity	5% — 95%

[go up...](#)

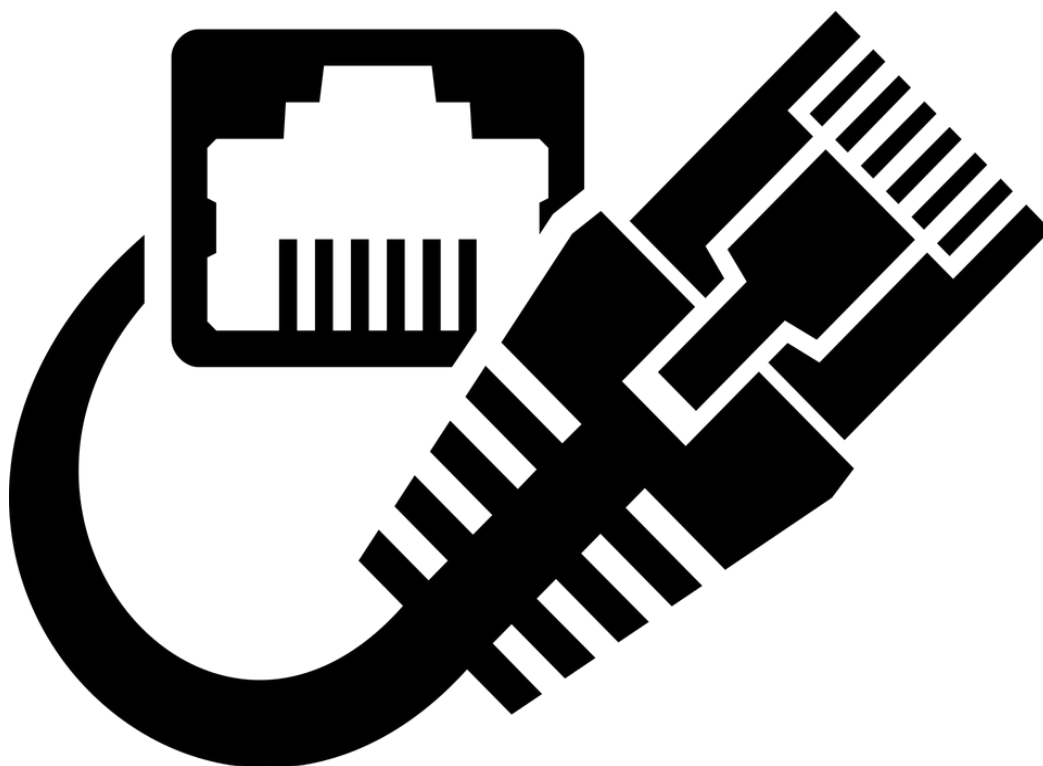
# CONNECTION

WIRELESS NETWORK

The dual-band Wi-Fi module provides quick access to the network wherever you can connect to secured or open Wi-Fi networks. This is a convenient solution for people who have a router at home or place of residence and a wireless network that can be used at no extra charge. Industrial mini-PC zBOX-PSO-1030 has been equipped the standard of - 802.11n, which allows transfer of files at a dizzying speed of up to 300 Mb / s.

## WIRED LAN NETWORK

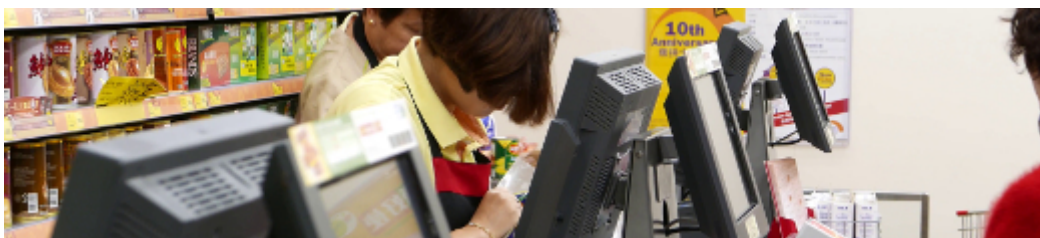
The MiniPC zBOX-PSO-1030 has built-in Realtek RTL8111F network adapter that can work in a fast Gigabit Ethernet network.



[go up...](#)

## TRADE AND SERVICES

Mini PC is an ideal tool to support us in the implementation of many activities in the field of trade, small dimensions increase the possibility of its adaptation to activities such as issuing invoices or preparing documentation, which in turn allows us to convenient and optimal sales management.



## WAREHOUSE AND LOGISTICS

Thanks high performance an industrial computer can be used to connect multiple devices in a warehouse and make their management much easier.





More pictures of the device available in the "[Gallery](#)" tab.

[go up...](#)

# VERSIONS

The industrial mini-computer zBOX-PSO-1030 is offered in several versions to suit different needs. By clicking on the number of the hardware configuration you will be redirected to the product with the parameters given in the table below. In addition, it is possible to create a configuration that is currently unavailable on the customer's request.

	v.0	v.1	v.2	v.3	v.4	v.5	v.6	v.7	v.8
WiFi	—	+	+	+	+	+	+	+	+
Bluetooth	—	—	—	—	—	+	+	+	+
4GB RAM	—	+	+	+	—	—	—	—	—
8GB RAM	—	—	—	—	+	+	—	—	—
16GB RAM	—	—	—	—	—	—	+	+	—
32GB RAM	—	—	—	—	—	—	—	—	+
32GB SSD	—	+	—	—	—	—	—	—	—
64GB SSD	—	—	+	—	—	—	—	—	—
128GB SSD	—	—	—	+	—	—	—	—	—
240GB SSD	—	—	—	—	+	—	—	—	—
500GB HDD	—	—	—	—	—	+	+	—	—
1TB HDD	—	—	—	—	—	—	—	+	—
2TB HDD	—	—	—	—	—	—	—	—	+