



Very efficient, dustproof and waterproof tablet (IP65) with a detachable keyboard, 16GB RAM, extended SSD 1TB, 4G and Windows 10 PRO - Emdoor X14 HIGH v.8

Category:	Laptops - Rugged
Manufacturer:	EMDOOR
Operating System:	Windows 10 PRO
Display:	14" LED Gorilla Glass 3 Scratch resistant
Brightness:	700cd/m ²
Touch screen:	-----
Processor:	Intel® Core™ i7-8550U (4x 1.8 GHZ)
Graphics card:	Intel® HD Graphics 620
Memory:	16GB DDR4L
Hard Drive:	1TB SSD M.2
Durability:	IP65 1m. drops MIL-STD 810G
Security:	IP65 1m. drops MIL-STD 810G
Sand and dust:	IP6X
Waterproof:	IPX5
Drop:	up to 1m.
Shock:	MIL-STD 810G
Vibration:	MIL-STD 810G
Temperature:	Work temp.: -10°C do 50°C Storage temp.: -30°C do 70°C

Humidity:	0 - 95%
1D barcode scanner (reader):	No
2D barcode scanner (reader):	No
RFID scanner (reader):	No
Other:	-----
Battery:	2000mAh/7.4V (built in) / 6300mHA/7.4V (Pluggable)
Working time on battery:	6 hours
Fast battery replacement ability:	Yes
HotSwap battery:	No
LAN:	Yes
WLAN:	802.11 a/b/g/n/ac
WAN:	3G/2G: GSM/GPRS/EDGE Band (850&900&1800&1900 MHZ)WCDMA Band(850&900&1900&2100MHz)HSDPA 21MbpsHSUPA 5.76 Mbps 4G: LTE: B1/B2/B3/B4/B5/B7
WAN:	3G/2G: GSM/GPRS/EDGE Band (850&900&1800&1900 MHZ)WCDMA Band(850&900&1900&2100MHz)HSDPA 21MbpsHSUPA 5.76 Mbps 4G: LTE: B1/B2/B3/B4/B5/B7
Bluetooth:	Bluetooth 4.2 (BLE)
GPS:	u-Blox NEO-7 (GLONASS+QZSS+GPS)
In/Out:	1x RS2321x RJ453x USB 3.0DC1x USB 2.01x SD Card1x SIM1x HDMI Type A1x Audio Jack
Flash Card Reader:	Micro SD
Audio:	Speakers 0.8W/8Ω Audio Jack
CD/DVD:	No
COM port:	1x DB9 (1x RS232)
Camera:	Front: 2Mpx
Magnetic card reader (MSR):	No
Microchip card reader:	No
Keyboard:	Yes - connected to device
Additional Navigation Devices :	No

Optional accessories:	-----
Docking station connector:	No
VESA standard – holders and mounts support:	No
BIOS:	-----
Chipset:	-----
Swivel Hinge:	-----
Contrast:	-----
VGA out:	No
TV Out:	No
TV Tuner:	No
Casing material:	-----
Color:	Black
Size:	305x205x16.5 mm - 2850g
Fanless casing:	Yes

10 816,31 zł

net price: 8 793,75 zł



TECHNICAL SPECIFICATION

RESISTANCE AND DURABILITY

CONNECTIVITY AND COMMUNICATION

DEVICE APPLICATION

AVAILABLE VERSIONS

Small dimensions industrial notebook excel in environments where dust, dirt and moisture predominate. They are ideal for applications requiring quiet operation. Small and reliable notebook use heat-pipe technology and aluminum fins for passive cooling. The robust industrial laptop is a device designed for all industrial and non-continuous applications requiring continuous operation - 24 hours, 7 days

a week



Reinforced housing

The reinforced Emdoor notebook case is resistant to mechanical damage and external factors such as temperature difference.



Lightweight design

The notebook weight does not exceed 3.0 kg, so it can be conveniently carried in a bag or backpack.



Efficient components

The Intel Core i7 8550U quad - core CPU provides improved device performance.



Wireless network

The notebook can be connected to nearby wireless networks by equipping it with an installed Wi-Fi module.



Quick start

A modern SSD M.2 drive will increase the speed of



Passive cooling

application programs and ensure quiet computer operation.

The use of passive cooling in the notebook ensures silent operation and slows dust deposition.

[go](#)

SPECIFICATION

Performance

Processor	Intel Core i7 8850U (4x 1.80GHz)
Graphics card	Intel UHD Graphics 620
Operating system	Windows 10 Professional
RAM	16 GB DDR4L
Drive	1TB SSD M.2

Interfaces

Connectivity	Wi-Fi Intel 3165 (a/b/g/n/ac) 2x LAN - Intel I219 + I210 10/100/1000 Mbps 4G
--------------	--

Interfaces

Connectors	1x RS232
	2x RJ45
	3x USB 3.0
	DC
	1x USB 2.0
	1x SD Card
	1x SIM
	1x HDMI Type A
	1x Audio Jack

Other

Available colors	Black
Dimensions	305x205x16.5 mm
Weight	2.850 kg

* Optional equipment, available only in other versions of the device.



Detailed device specification is available in the "Technical data" tab.

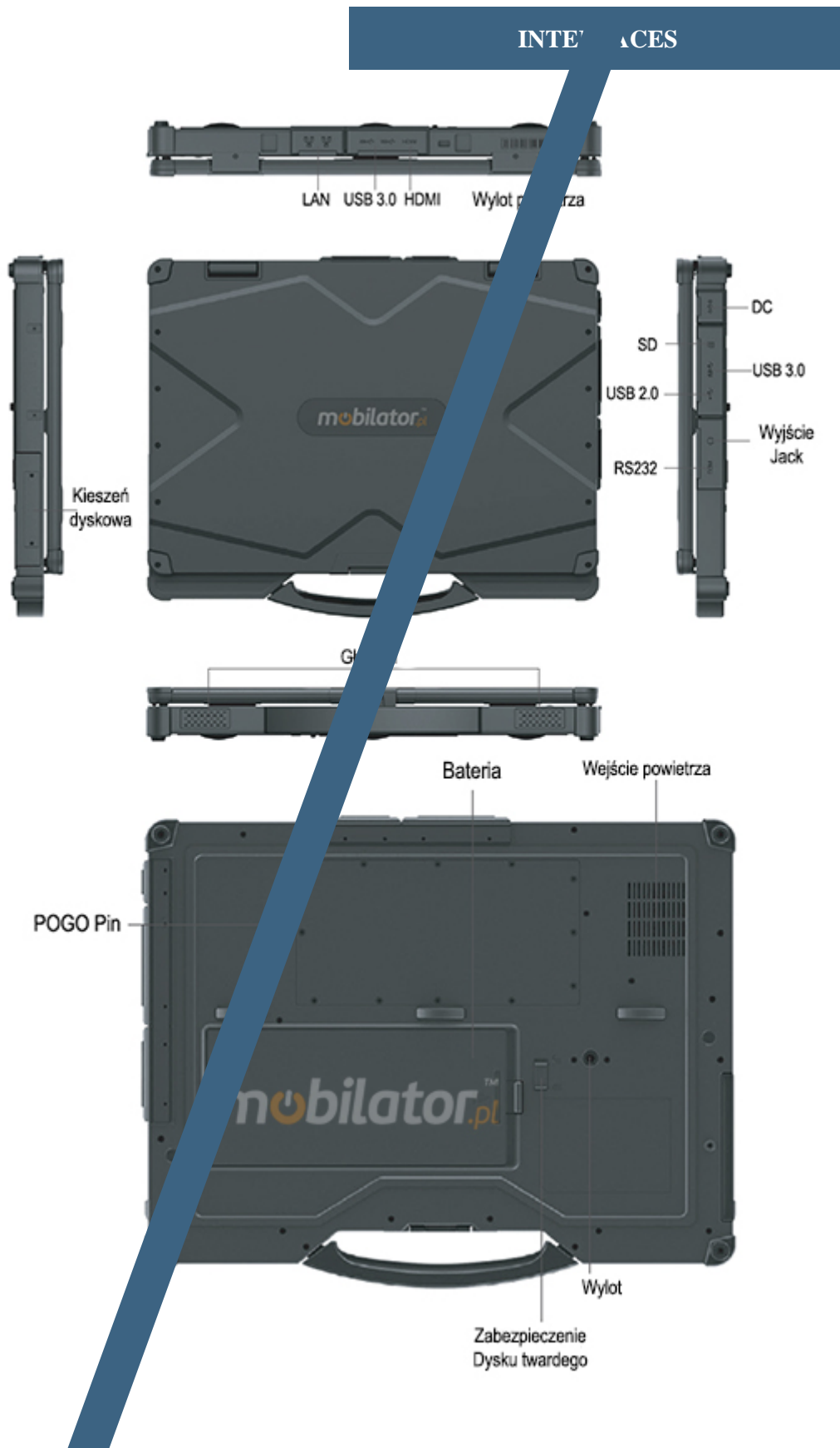
Comparison of disk speeds

HDD	Read: 170MB/s Write: 140MB/s
SSD M.2 Drive	Read: 520 MB/s Write: 370MB/s

EFFICIENT PROCESSOR

The industrial notebook Emdoor X14 HIGH uses an efficient and energy-saving Intel Intel Core i7 8550U processor. Inside it there are four cooperating cores enabling more efficient processing of many tasks at the same time. The shared cache

memory in which the multilevel hierarchy is used is dynamically allocated to each processor core depending on the load. This reduces the average access time to the main memory.



DIMENSIONS



PASSIVE COOLING

The industrial Emdoor Notebook uses a proven cooling system, based only on solid elements, mainly heat sinks. The system uses the phenomenon of metals passing thermal energy into the environment - there are no additional moving elements in the form of eg fans. This solution ensures noiseless operation, lower failure rate and greater protection against dust and other dirt while reducing the amount of energy consumed.

[go up...](#)

RESISTANCE

TEMPERATURES

X14 HIGH by Emdoor is designed for continuous operation in both very low and high temperatures ranging from -10 ° C to 50 ° C. If the device is switched off, it can already handle temperatures in the range of -30 ° C to 70 ° C.



Work temp.	-10°C — 50°C
Storage temp.	-30°C — 70°C
Humidity	0% — 95%

MECHANICAL DAMAGE

The passive cooling system used in the notebook combined with the non-disk SSD M.2 make this computer very resistant to various types of mechanical injuries. An additional advantage of industrial computers is a solid construction made of high quality aluminum and specially designed in such a way that in addition to high efficiency in heat dissipation, it can also resist any external damage.

CONNECTION

WIRELESS NETWORK

The dual-band Wi-Fi module provides quick access to the network wherever you can connect to secured or open Wi-Fi networks. This is a convenient solution for people who have a router at home or place of residence and a wireless network that can be used at no extra charge. Industrial notebook X14 HIGH has been equipped the standard of - 802.11(a/b/g/n/ac), which allows transfer of files at a dizzying speed of up to 433 Mb / s.

WIRED LAN NETWORK

The notebook Emdoor X14 HIGH has been in two Intel network adapter that can work in a fast Gigabit Ethernet network

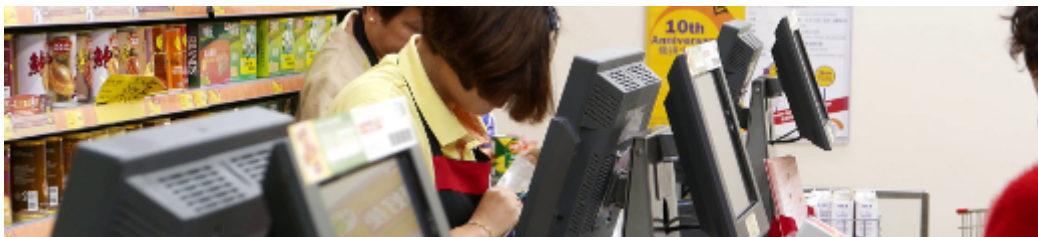


[go up...](#)

APPLICATIONS

TRADE AND SERVICES

Industrial notebook is an ideal tool to support us in the implementation of many activities in the field of trade, small dimensions increase the possibility of its adaptation to activities such as issuing invoices or preparing documentation, which in turn allows us to convenient and optimal sales management.



WAREHOUSE AND LOGISTICS

Thanks high performance an industrial notebook can be used to connect multiple devices in a warehouse and make their management much easier. Its rugged casing and the fanless cooling system are ideal for harsh environments in such rooms. The solid construction guarantees long-lasting work, even in environments with high dustiness and dirt.



More pictures of the device available in the ["Gallery"](#) tab.

[go up...](#)



The industrial Emdoor X14 HIGH notebook is offered in several versions to suit different needs. By clicking on the number of the hardware configuration you will be redirected to the product with the parameters given in the table below. In addition, it is possible to create a configuration that is currently unavailable on the customer's request.

	v.1	v.2	v.3	v.4	v.5	v.6	v.7	v.8	v.9
16GB RAM + 1 TB SSD	—	+	—	—	—	—	—	+	+

16GB RAM + 256 GB SSD	+	-	+	+	+	+	+	-	-
Windows 10 Professional	-	-	-	+	-	-	+	+	+
Windows 10 Home	-	-	+	-	-	-	-	-	-
Windows 10 IoT	-	-	-	-	+	-	-	-	-
4G	-	-	-	-	-	+	+	+	-