



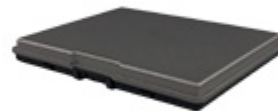
Winmate M101B - High Capacity Battery

Category:	Accessories - mobile
Manufacturer:	Winmate

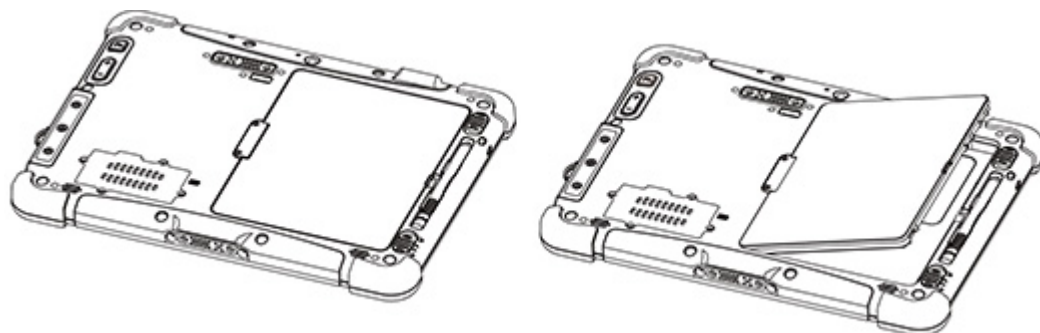
Product from the Archive - production finished

Description

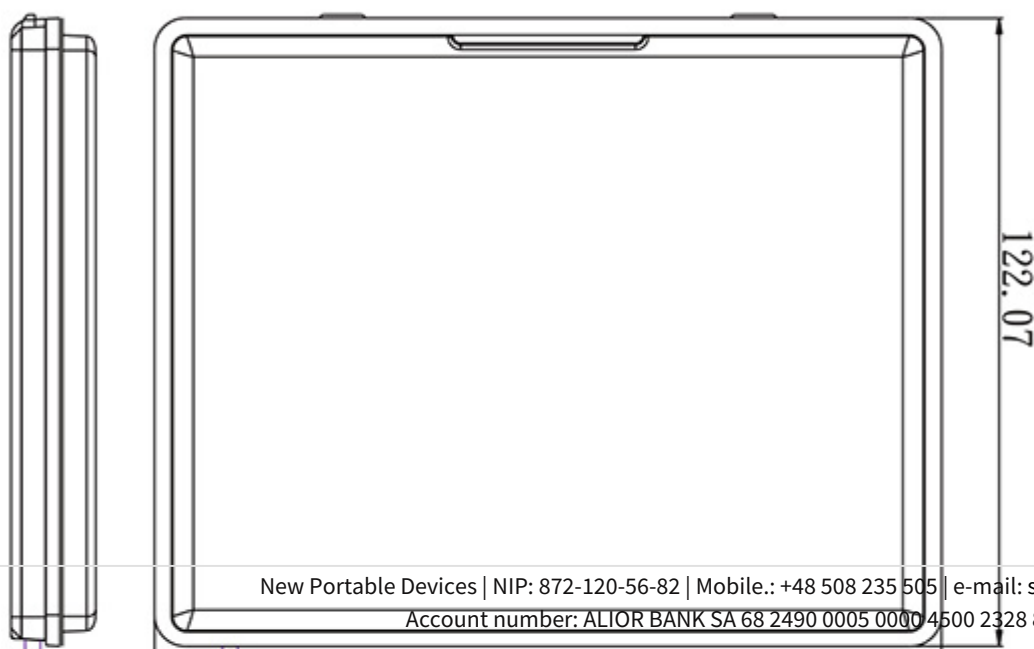
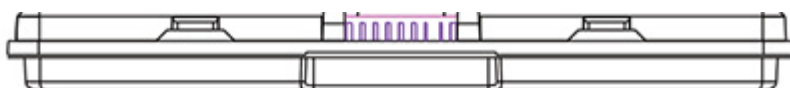
- Easy installation
- Compatible with M101B/M101H/M101D
- 10200mAh
- 7.4V



Instllation procedure



Specification



Dimensions	153 x 122 x 16.5mm
Weight	474g
Voltage/Capacity	7.4V / 10200mAh
Composition	2S1P Li-Polymer Re-chargeable Battery
Operating temperature	Standard Charging: 0 ~ 45°C Standard Discharging: -20 ~ 60°C
Life Cycle	300
Color	Pantone #8403C
Certification	UL2054, IEC62133, UN38.3